

Appendix III: County-Specific Data

Table of Contents

Albany County	2
Birth Distribution	2
Birth Indicator Trends	4
Birth Outcomes and Prenatal Care	6
Columbia	8
Birth Distribution	8
Birth Indicator Trends	10
Birth Outcomes and Prenatal Care	12
Greene	14
Birth Distribution	14
Birth Indicator Trends	16
Birth Outcomes and Prenatal Care	18
Rensselaer	20
Birth Distribution	20
Birth Indicator Trends	22
Birth Outcomes and Prenatal Care	24
Saratoga	26
Birth Distribution	26
Birth Indicator Trends	28
Birth Outcomes and Prenatal Care	30
Schenectady	32
Birth Distribution	32
Birth Indicator Trends	34
Birth Outcomes and Prenatal Care	36

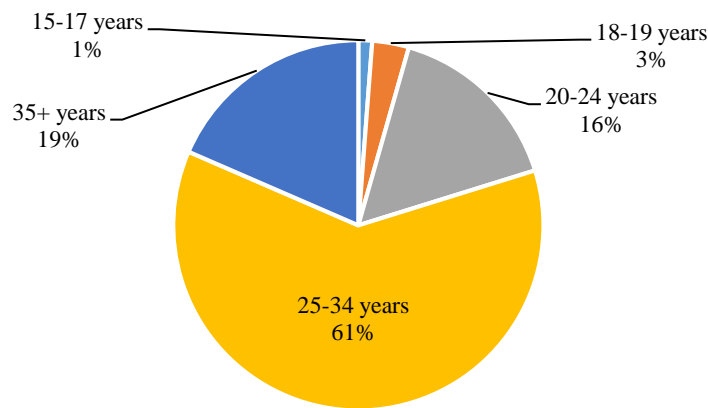
Albany County

Birth Distribution

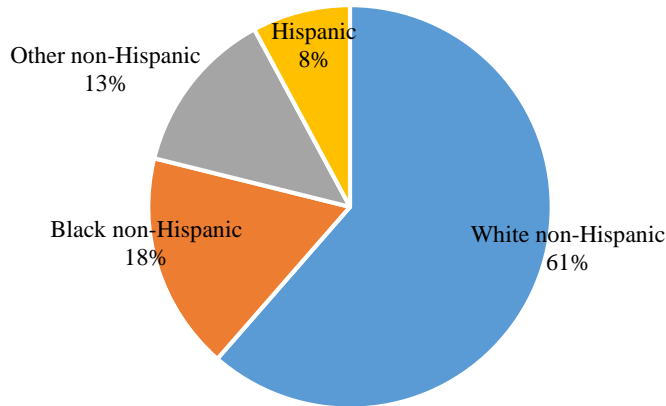
Highlights:

- Albany averaged 3,150 births per year.
- About 4.4% of Albany County births were to women < 20 years of age; 18.5% were to women 35+ years of age.
- Albany County had a higher percentage of black non-Hispanic (17.4%), other non-Hispanic (13.3%) births than both the Capital Region and Upstate NY; Hispanic births (7.9%) were slightly higher than the Capital Region but much lower than Upstate NY.
- About 39% of Albany's births were covered by Medicaid.

Average Number of Births by Maternal Age, Albany County, 2013-15 (N=3,153) ¹¹



Average Number of Births by Race/Ethnicity, Albany County, 2013-15 (N=3,153) ¹¹



**Births by Outcomes and Equity, Albany County, Capital Region, and NYS excl. NYC,
2013-2015**

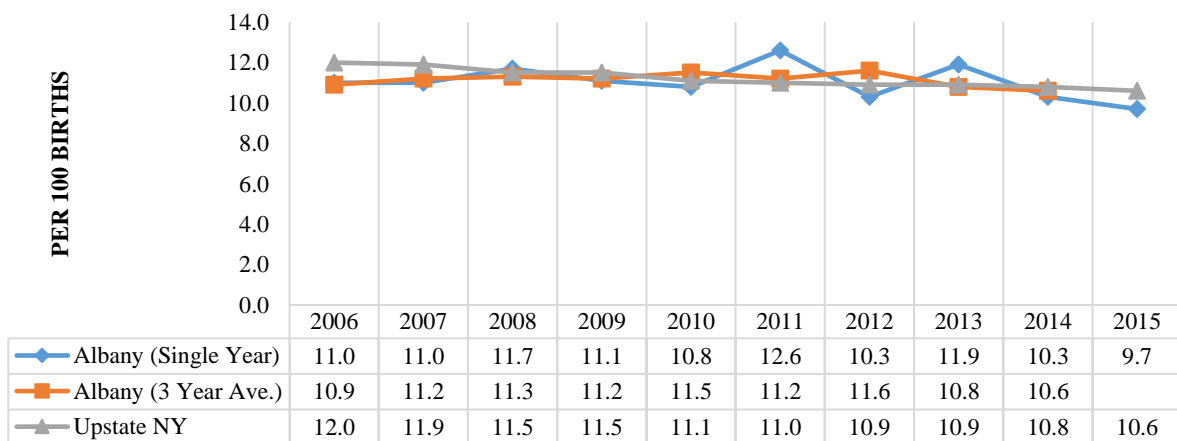
	Albany County		Capital Region		Upstate NY
	# (3 yr ave)	% (3 yr ave)	# (3 yr ave)	% (3 yr ave)	% (3 yr ave)
Total Births	3,153		9,710		120,035
Outcomes					
Births < 37 Weeks Gest.	335	10.6	1,008	10.4	10.6
Births < 2,500 grams	249	7.9	724	7.5	7.6
Infant Mortality/1,000 births	21	6.8	57	5.9	5.2
Age					
<=17 years	38	1.2	117	1.2	1.2
18-19 years	101	3.2	319	3.3	3.4
20-34 years	2,432	77.1	7,536	77.6	75.7
35+ years	583	18.5	1,739	17.9	19.6
Race/Ethnicity[^]					
White non-Hispanic	1,936	61.4	7,035	72.5	65.1
Black non-Hispanic	550	17.4	999	10.3	10.1
Other non-Hispanic	418	13.3	970	10.0	7.7
Hispanic	248	7.9	695	7.2	17.1
Financial Coverage at Birth #					
Medicaid	1,224	38.9	3,442	35.6	42.4
Self-Pay	38	1.2	124	1.3	1.5
Other	1,886	59.9	6,105	63.1	56.1
Prenatal Care*					
Early (1st Trimester)	2,339	76.3	7,368	77.3	76.3
Late (3rd Trimester) or no	154	5.0	411	4.3	4.1
[^] for births with known race/ethnicity					
[#] for births with known coverage					
[*] for births with known prenatal care					

Birth Indicator Trends

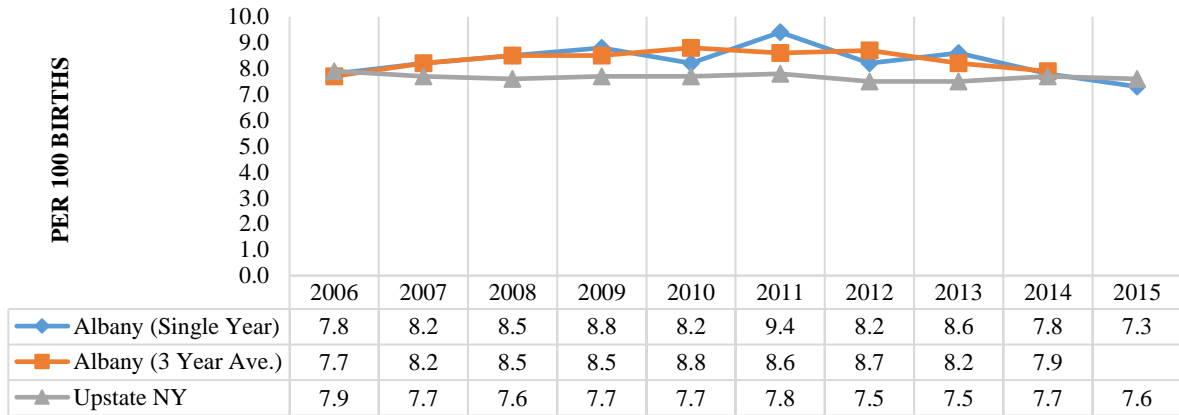
Highlights:

- Albany’s birth outcome and prenatal care indicators showed marked improvement between 2014 and 2015.
- Albany’s prematurity rates decreased 11.8% over the last decade; its rates lower than Upstate since 2014.
- Over the last decade, Albany had higher low birthweight rates compared to Upstate, but showed a 6.4% decrease in the rate. In 2015, Albany’s rate was lower than Upstate.
- Albany’s infant mortality rate was consistently higher than Upstate. The difference had decreased from 40% higher in 2006 to 12% higher in 2015. Albany’s rate decreased over 26% over the last decade.
- Over the last decade, Albany had poorer prenatal care rates compared to Upstate. Early prenatal care only increased 2% over the last decade, but the 2015 rate of was higher than Upstate. Albany had consistently poorer late or no prenatal care rates than Upstate. However the difference has been decreasing from 78% higher than Upstate in 2011 to 10% higher in 2015. Albany’s late or no prenatal care rate decreased 18.5% over the last decade.

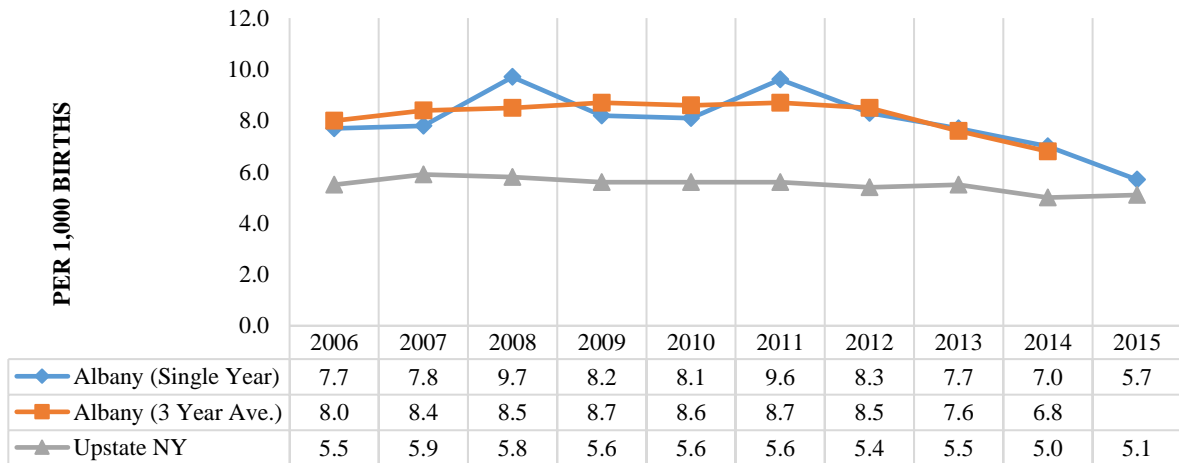
PERCENT PREMATURE BIRTHS WITH <37 WEEKS GESTATION, ALBANY COUNTY, AND NYS EXCL. NYC, 2006 TO 2015 ¹²



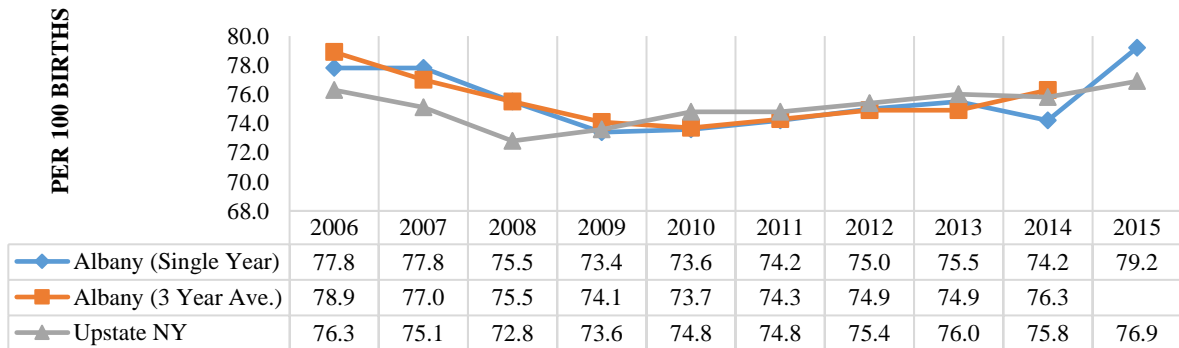
PERCENT LOW BIRTH WEIGHT BIRTHS (<2500 GRAMS), ALBANY COUNTY, AND NYS EXCL. NYC, 2006 TO 2015 ¹²



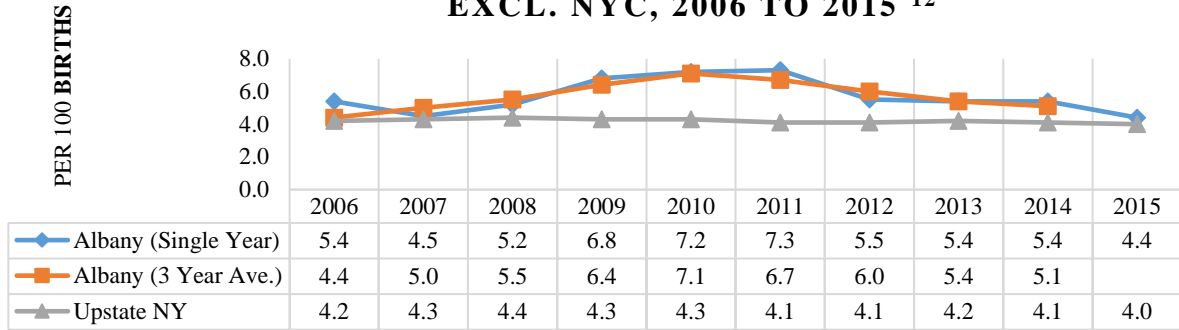
INFANT MORTALITY PER 1,000 BIRTHS, ALBANY COUNTY, AND NYS EXCL. NYC, 2006 TO 2015 ¹²



PERCENT OF BIRTHS WITH EARLY(1ST TRIMESTER), ALBANY COUNTY, AND NYS EXCL. NYC, 2006 TO 2015¹²



PERCENT OF BIRTHS WITH LATE (3RD TRIMESTER) OR NO PRENATAL CARE, ALBANY COUNTY, AND NYS EXCL. NYC, 2006 TO 2015 ¹²



Birth Outcomes and Prenatal Care

Highlights:

- Albany’s prematurity rate of 10.6% was similar, and low birthweight rate of 7.9% was slightly higher than Upstate NY.
- Black non-Hispanic births from Albany had 1.5 times the rate of prematurity compared to white non-Hispanic births (15.1% vs 9.9%). Hispanic births had slightly higher prematurity rates (10.5%) as the white non-Hispanic population. Black non-Hispanic and Hispanic births in Albany had lower prematurity rates compared to Upstate.
- Albany’s prematurity rate for Medicaid births was 9% higher than the County non-Medicaid births (11.3 vs 10.4%).
- Albany’s low birth weight rate was higher than in the ≤17 year (13.2%) and 35+ year (8.2%) age groups.
- Black non-Hispanic births (14.3%) had 2.25 times, and Hispanic births (8.3%) 1.3 times the low birth weight rate as the white non-Hispanic population (6.4%). Black non-Hispanic and Hispanic births in Albany had higher low birth weight rates compared to Upstate.
- The early prenatal care rate for Albany County increased with age from 42.1% for women ≤17 years to 81.8% for women 35+ years of age. Albany’s rates were consistently lower than Upstate across all age groups.
- Black non-Hispanic (63.4%) and Hispanic (64.4%) women had rates over 20% lower early prenatal care rates compared to white non-Hispanic women (80.7%). The minority early prenatal care rates were lower than comparable Upstate rates.
- The late or no prenatal care rate for Albany County decreased with age from 13.2% for women ≤17 years to 3.0% for women 35+ years of age. Albany’s rates were higher than Upstate across all age groups except for 35+ years.
- Black non-Hispanic women had 2.7 times the late or no prenatal rate compared to white non-Hispanic women (9.8% vs 3.6%). Hispanic women (6.5%) had 1.7 times the white non-Hispanic rate. All race/ethnicity groups had rates higher than Upstate.

Birth Outcomes and Prenatal Care by Equity, Albany County, Capital Region, and NYS excl. NYC, 2013-2015

	Albany County		Capital Region		Upstate NY
	# (3 yr ave)	% (3 yr ave)	# (3 yr ave)	% (3 yr ave)	% (3 yr ave)
Total Births (2013-15)	3,153		9,710		120,035
% Premature (<37 weeks)-Total (2013-15)	335	10.6	1,008	10.4	10.6
by Race/Ethnicity^ (2012-14)					
White non-Hispanic	190	9.9	719	10.1	9.9
Black non-Hispanic	88	15.1	154	14.9	15.7
Hispanic	26	10.5	67	9.8	11.9
by Financial Coverage at Birth # (2013-15)					
Medicaid	138	11.3	375	10.9	11.4
Non-Medicaid	200	10.4	642	10.3	10.4
% Low Birthweight (<2.5kg.)-Total (2013-15)	249	7.9	724	7.5	7.7
by Age (2013-15)					
<=17 years	5	13.2	12	10.3	9.1
18-19 years	7	6.9	22	6.9	8.7
20-34 years	189	7.8	535	7.1	7.2
35+ years	48	8.2	153	8.8	8.6
by Race/Ethnicity^ (2012-14)					
White non-Hispanic	123	6.4	477	6.7	6.8
Black non-Hispanic	83	14.3	138	13.4	12.8
Hispanic	21	8.3	50	7.3	7.3
% Early (1st Trimester) Prenatal Care*-Total (2013-15)	2,339	76.3	7,368	77.3	76.3
by Age (2013-15)					
<=17 years	16	42.1	58	49.6	52.7
18-19 years	57	56.4	204	63.9	62.3
20-24 years	329	66.1	1,158	68.4	69.4
25-34 years	1,531	79.2	4,685	80.2	80.5
35+ years	477	81.8	1,429	82.2	82.0
by Race/Ethnicity^ (2012-14)					
White non-Hispanic	1,546	80.7	5,654	79.5	79.7
Black non-Hispanic	368	63.4	656	63.5	65.9
Hispanic	160	64.4	459	67.0	69.7
% Late (3rd Trimester) or No Prenatal Care*-Total (2013-15)	154	5.0	411	4.3	4.1
by Age (2013-15)					
<=17 years	5	13.2	13	10.8	11.9
18-19 years	12	11.9	25	7.7	7.9
20-24 years	45	9.0	119	7.0	6.1
25-34 years	78	4.0	209	3.6	3.5
35+ years	20	3.0	51	2.9	3.1
by Race/Ethnicity^ (2012-14)					
White non-Hispanic	69	3.6	249	3.5	3.1
Black non-Hispanic	57	9.8	88	8.5	7.9
Hispanic	16	6.5	43	6.3	5.5
^ for births with known race/ethnicity					
# for births with known coverage					
* for births with known prenatal care					
Red= fewer than 10 events in numerator, therefore the rate is unstable					

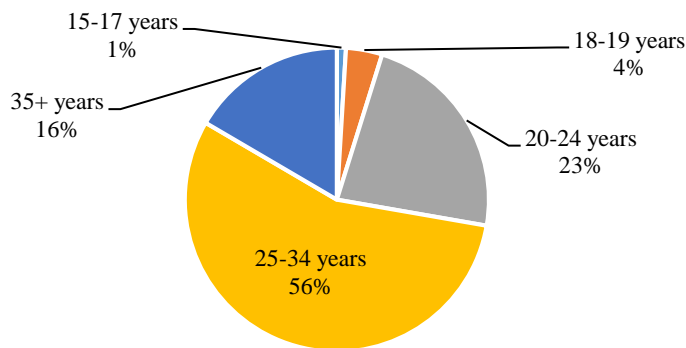
Columbia County

Birth Distribution

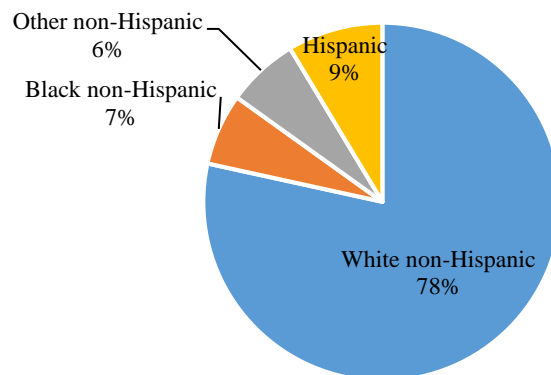
Highlights:

- Columbia averaged 520 births per year.
- About 4.9% of Columbia County births were to women < 20 years of age; 16.6% were to women 35+ years of age. Columbia had a younger birthing population than the Capital Region and Upstate NY.
- Columbia County had a lower percentage of black non-Hispanic (6.5%), other non-Hispanic (6.5%) births than both the Capital Region and Upstate NY. The County had a higher percentage of Hispanic births (8.6%) than the Capital Region.
- About 53% of Columbia's births were covered by Medicaid, almost 25% higher than Upstate

Average Number of Births by Maternal Age, Columbia County, 2013-15 (N=518) ¹¹



Average Number of Births by Race/Ethnicity, Columbia County, 2013-15 (N=518) ¹¹



**Births by Outcomes and Equity, Columbia County, Capital Region, and NYS excl. NYC,
2013-2015**

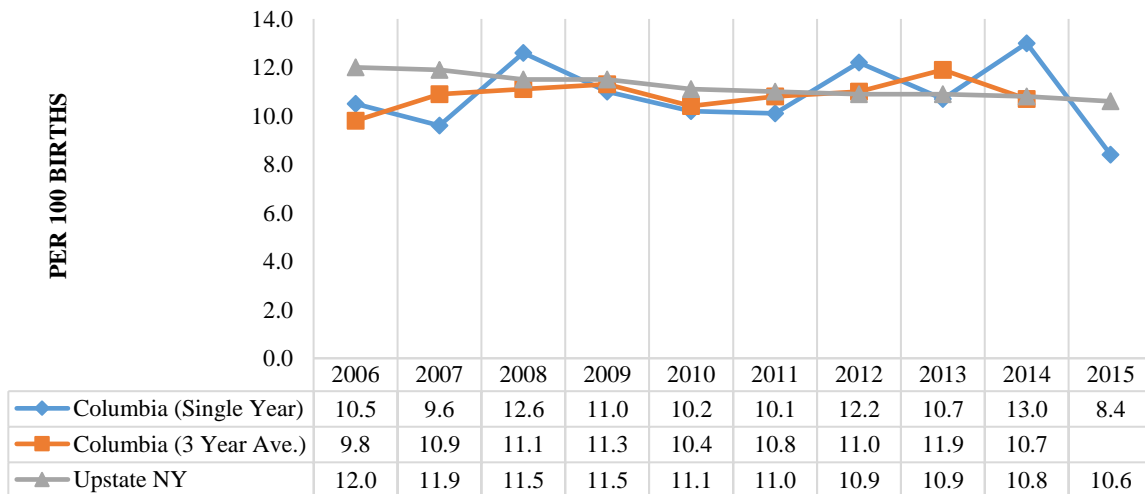
	Columbia County		Capital Region		Upstate NY
	# (3 yr ave)	% (3 yr ave)	# (3 yr ave)	% (3 yr ave)	% (3 yr ave)
Total Births	518		9,710		120,035
Outcomes					
Births < 37 Weeks Gest.	54	10.4	1,008	10.4	10.6
Births < 2,500 grams	34	6.6	724	7.5	7.6
Infant Mortality/1,000 births	4	7.7	57	5.9	5.2
Age					
<=17 years	5	1.0	117	1.2	1.2
18-19 years	20	3.9	319	3.3	3.4
20-34 years	407	78.6	7,536	77.6	75.7
35+ years	86	16.6	1,739	17.9	19.6
Race/Ethnicity[^]					
White non-Hispanic	400	78.4	7,035	72.5	65.1
Black non-Hispanic	33	6.5	999	10.3	10.1
Other non-Hispanic	33	6.5	970	10.0	7.7
Hispanic	44	8.6	695	7.2	17.1
Financial Coverage at Birth #					
Medicaid	261	52.5	3,442	35.6	42.4
Self-Pay	9	1.8	124	1.3	1.5
Other	227	45.7	6,105	63.1	56.1
Prenatal Care*					
Early (1st Trimester)	376	72.9	7,368	77.3	76.3
Late (3rd Trimester) or no	26	5.0	411	4.3	4.1
[^] for births with known race/ethnicity					
# for births with known coverage					
* for births with known prenatal care					

Birth Indicator Trends

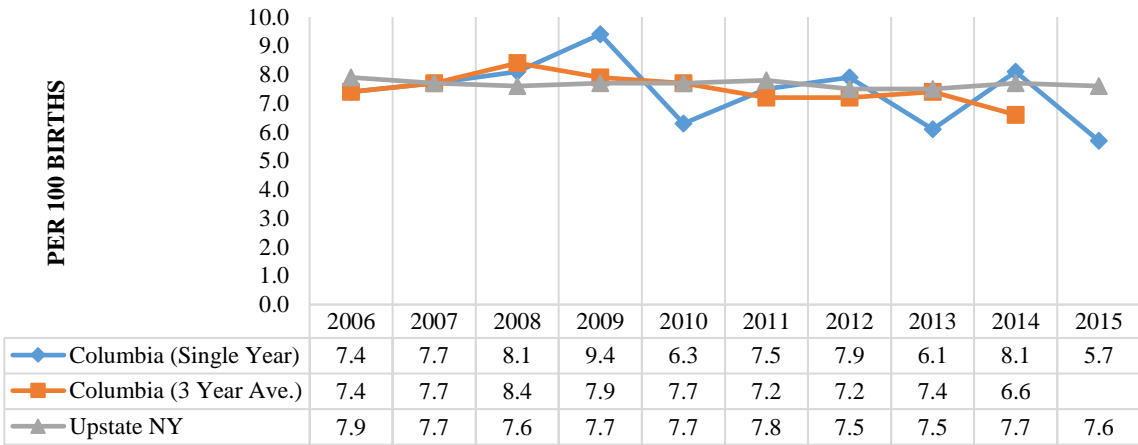
Highlights:

- Columbia’s birth outcome indicators showed marked improvement, while prenatal care indicators worsened, between 2014 and 2015.
- Columbia’s prematurity rates fluctuated over the last decade; the 2014 rate of 13.0% the highest in the decade, while the 2015 rate of 8.4% the lowest.
- Over the last decade, Columbia’s low birth weight rates fluctuated; the 2014 rate of 8.1% the highest in the decade, while the 2015 rate of 5.7% the lowest.
- Columbia’s infant mortality rate decreased from 2006 through 2012 but increased through 2014. The 2014 rate of 10.2/1,000 was the highest in the decade, while the 2015 rate of 3.8/1,000 the lowest.
- Over the last decade, Columbia had poorer prenatal care rates compared to Upstate. Early prenatal care actually decreased 7.4% over the last decade. The County had consistently poorer late or no prenatal care rates than Upstate. However Columbia’s late or no prenatal care rate decreased 13% over the last decade.

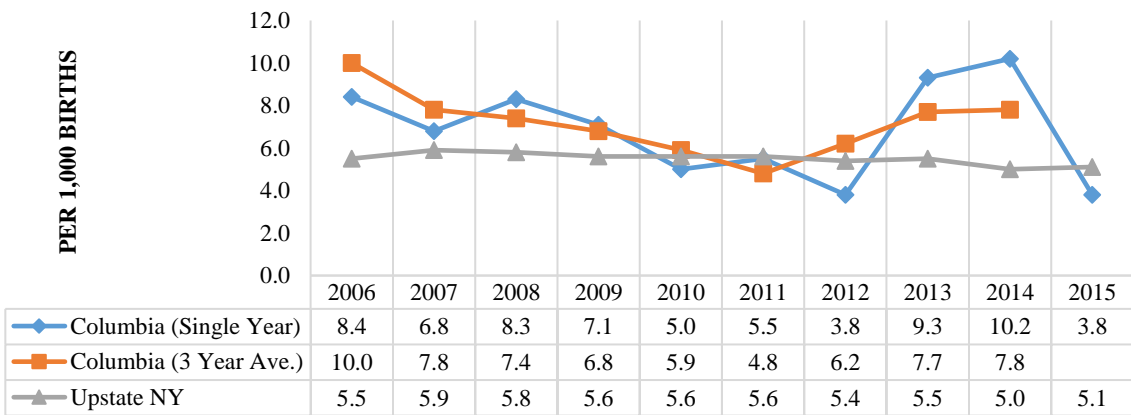
PERCENT PREMATURE BIRTHS WITH <37 WEEKS GESTATION, COLUMBIA COUNTY, AND NYS EXCL. NYC, 2006 TO 2015 12



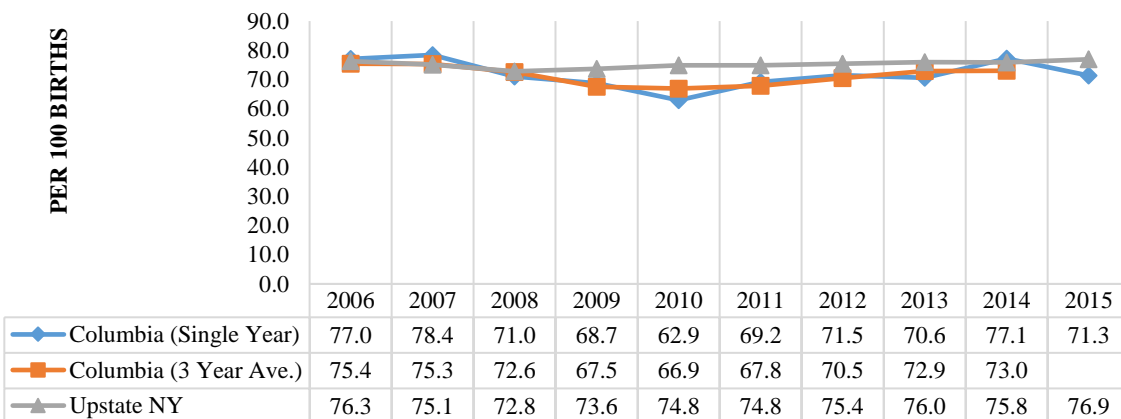
PERCENT LOW BIRTH WEIGHT BIRTHS (<2500 GRAMS), COLUMBIA COUNTY, AND NYS EXCL. NYC, 2006 TO 2015 ¹²



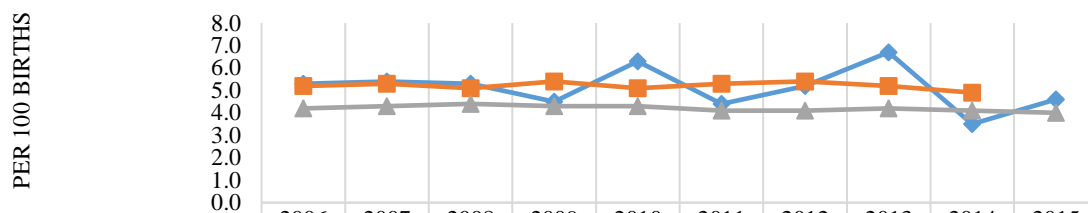
INFANT MORTALITY PER 1,000 BIRTHS, COLUMBIA COUNTY, AND NYS EXCL. NYC, 2006 TO 2015 ¹²



PERCENT OF BIRTHS WITH EARLY(1ST TRIMESTER), COLUMBIA COUNTY, AND NYS EXCL. NYC, 2006 TO 2015 ¹²



PERCENT OF BIRTHS WITH LATE(3RD TRIMESTER) OR NO PRENATAL CARE, COLUMBIA COUNTY, AND NYS EXCL. NYC, 2006 TO 2015 ¹²



	2006	2007	2008	2009	2010	2011	2012	2013	2014	2015
—◆— Columbia (Single Year)	5.3	5.4	5.3	4.5	6.3	4.4	5.2	6.7	3.5	4.6
—■— Columbia (3 Year Ave.)	5.2	5.3	5.1	5.4	5.1	5.3	5.4	5.2	4.9	
—▲— Upstate NY	4.2	4.3	4.4	4.3	4.3	4.1	4.1	4.2	4.1	4.0

Birth Outcomes and Prenatal Care

Highlights:

- Columbia’s prematurity rate of 10.4% and low birth weight rate of 6.6% was lower than the comparable rates for Upstate NY.
- Black non-Hispanic births from Columbia had a 30% higher rate of prematurity compared to white non-Hispanic births (15.2% vs 11.8%), while Hispanic births had 30% lower rates (8.0%). White non-Hispanic births in higher prematurity rates compared to Upstate.
- Columbia’s prematurity rate for non-Medicaid births (11.0%) was actually 10% higher than the County Medicaid births (9.9%).
- Columbia’s low birth weight rate was highest in the ≤17 year (20.0%) age group. Compared to Upstate, Columbia’s low birth weight rate was lower for all age groups except the ≤ 17 years of age.
- Black non-Hispanic births from Columbia had twice the low birth weight rate compared to white non-Hispanic births (14.1% vs 7.0%). Hispanic births (3.6%) had a 50% lower rate than the white non-Hispanic population. White and black non-Hispanic births in Columbia had higher low birth weight rates compared to Upstate.
- The early prenatal care rate for Columbia County of only 72.9% was markedly lower than the Capital Region and Upstate NY. Columbia’s younger women (< 25 years) had poorer early care rates compared to older County residents.
- Columbia’s Hispanic women had early prenatal care rates much poorer (55.5%) than white non-Hispanic (75.8%) and black non-Hispanic (76.9%) residents.
- The late or no prenatal care rate for Columbia County (5.0%) was poorer than both Capital Region and Upstate NY; the rate decreased with age from 13.3% for women ≤17 years to 1.9% for women 35+ years of age.
- Columbia’s white (4.2%) and black non-Hispanic women (4.3%) had similar late or no prenatal rates. Hispanic women (15.7%) had over 3.5 times higher the late or no prenatal care rate.

Birth Outcomes and Prenatal Care by Equity, Columbia County, Capital Region, and NYS excl. NYC, 2013-2015

	Columbia County		Capital Region		Upstate NY
	# (3 yr ave)	% (3 yr ave)	# (3 yr ave)	% (3 yr ave)	% (3 yr ave)
Total Births (2013-15)	518		9,710		120,035
% Premature (<37 weeks)-Total (2013-15)	54	10.4	1,008	10.4	10.6
by Race/Ethnicity^ (2012-14)					
White non-Hispanic	48	11.8	719	10.1	9.9
Black non-Hispanic	5	15.2	154	14.9	15.7
Hispanic	4	8.0	67	9.8	11.9
by Financial Coverage at Birth # (2013-15)					
Medicaid	255	9.9	375	10.9	11.4
Non-Medicaid	262	11.0	642	10.3	10.4
% Low Birthweight (<2.5kg.)-Total (2013-15)	34	6.6	724	7.5	7.7
by Age (2013-15)					
<=17 years	1	20.0	12	10.3	9.1
18-19 years	1	5.0	22	6.9	8.7
20-34 years	27	6.6	535	7.1	7.2
35+ years	5	5.8	153	8.8	8.6
by Race/Ethnicity^ (2012-14)					
White non-Hispanic	29	7.0	477	6.7	6.8
Black non-Hispanic	4	14.1	138	13.4	12.8
Hispanic	2	3.6	50	7.3	7.3
% Early (1st Trimester) Prenatal Care*-Total (2013-15)	376	72.9	7,368	77.3	76.3
by Age (2013-15)					
<=17 years	2	40.0	58	49.6	52.7
18-19 years	14	70.0	204	63.9	62.3
20-24 years	77	64.7	1,158	68.4	69.4
25-34 years	229	79.2	4,685	80.2	80.5
35+ years	66	76.7	1,429	82.2	82.0
by Race/Ethnicity^ (2012-14)					
White non-Hispanic	310	75.8	5,654	79.5	79.7
Black non-Hispanic	24	76.9	656	63.5	65.9
Hispanic	27	55.4	459	67.0	69.7
% Late (3rd Trimester) or No Prenatal Care*-Total (2013-15)	26	5.0	411	4.3	4.1
by Age (2013-15)					
<=17 years	<1	13.3	13	10.8	11.9
18-19 years	<1	3.3	25	7.7	7.9
20-24 years	10	8.4	119	7.0	6.1
25-34 years	13	4.4	209	3.6	3.5
35+ years	2	1.9	51	2.9	3.1
by Race/Ethnicity^ (2012-14)					
White non-Hispanic	17	4.2	249	3.5	3.1
Black non-Hispanic	1	4.3	88	8.5	7.9
Hispanic	8	15.7	43	6.3	5.5
^ for births with known race/ethnicity					
# for births with known coverage					
* for births with known prenatal care					
Red= fewer than 10 events in numerator, therefore the rate is unstable					

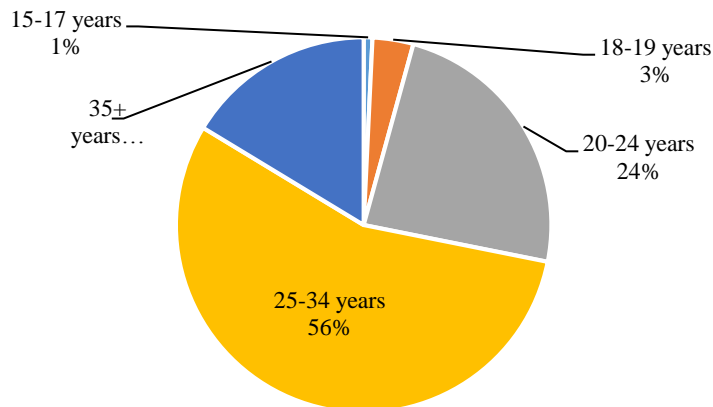
Greene County

Birth Distribution

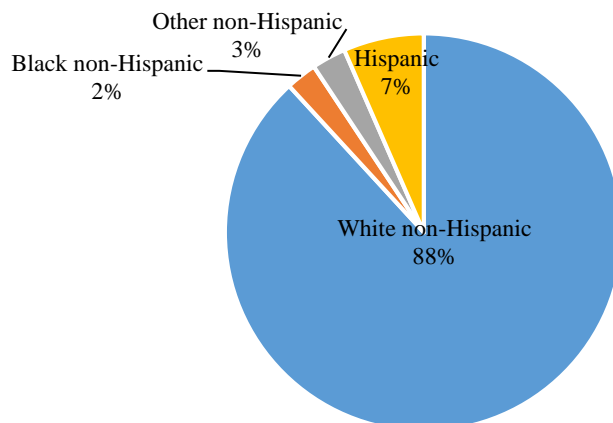
Highlights:

- Greene averaged 400 births per year.
- About 4.2% of Columbia County births were to women < 20 years of age; 16.3% were to women 35+ years of age.
- Greene County had a lower percentage of black non-Hispanic (2.5%), other non-Hispanic (2.8%) and Hispanic births (6.5%) births than both the Capital Region and Upstate NY.
- About 48% of Columbia's births were covered by Medicaid, higher than both the Capital Region and Upstate NY.

Average Number of Births by Maternal Age, Greene County, 2013-15 (N=398) ¹¹



Average Number of Births by Race/Ethnicity, Greene County, 2013-15 (N=398) ¹¹



**Births by Outcomes and Equity, Greene County, Capital Region, and NYS excl. NYC,
2013-2015**

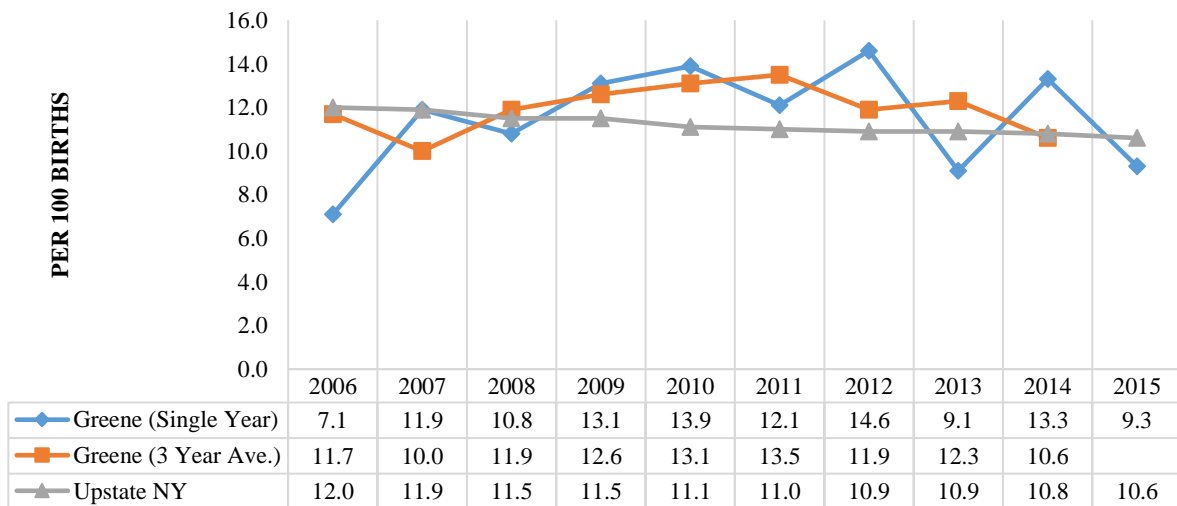
	Greene County		Capital Region		Upstate NY
	# (3 yr ave)	% (3 yr ave)	# (3 yr ave)	% (3 yr ave)	% (3 yr ave)
Total Births	398		9,710		120,035
Outcomes					
Births < 37 Weeks Gest.	42	10.6	1,008	10.4	10.6
Births < 2,500 grams	29	7.2	724	7.5	7.6
Infant Mortality/1,000 births	1	2.5	57	5.9	5.2
Age					
<=17 years	3	0.7	117	1.2	1.2
18-19 years	14	3.5	319	3.3	3.4
20-34 years	315	79.1	7,536	77.6	75.7
35+ years	65	16.3	1,739	17.9	19.6
Race/Ethnicity[^]					
White non-Hispanic	350	88.2	7,035	72.5	65.1
Black non-Hispanic	10	2.5	999	10.3	10.1
Other non-Hispanic	11	2.8	970	10.0	7.7
Hispanic	26	6.5	695	7.2	17.1
Financial Coverage at Birth #					
Medicaid	191	48.2	3,442	35.6	42.4
Self-Pay	7	1.8	124	1.3	1.5
Other	198	50.0	6,105	63.1	56.1
Prenatal Care*					
Early (1st Trimester)	288	73.6	7,368	77.3	76.3
Late (3rd Trimester) or no	20	5.0	411	4.3	4.1
[^] for births with known race/ethnicity					
# for births with known coverage					
* for births with known prenatal care					

Birth Indicator Trends

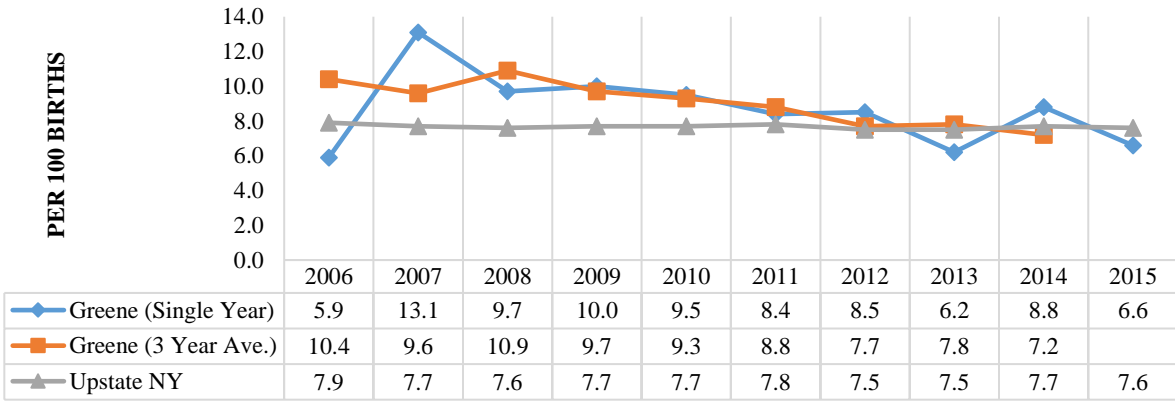
Highlights:

- Greene’s birth outcome indicators showed marked improvement between 2014 and 2015.
- Greene’s prematurity rates increased from 2006 to 2012, then showed a decreasing trend to 2015. The prematurity rates were generally higher than Upstate NY.
- Greene’s low birth weight rates have shown a decreasing trend over the last decade, with rates usually higher than Upstate NY.
- Greene’s infant mortality rate showed major fluctuations over the last decade due to small numbers, with a general decreasing trend since 2010.
- Over the last decade, Greene usually had poorer prenatal care rates compared to Upstate. Early prenatal care actually decreased from 2006 to 2011, with improvement to 2015.
- The County had similar late or no prenatal care trends, increasing trend through 2010 and a slight decreasing trend through 2015. However, Greene’s late or no prenatal care rate in 2015 was similar to that in 2006.

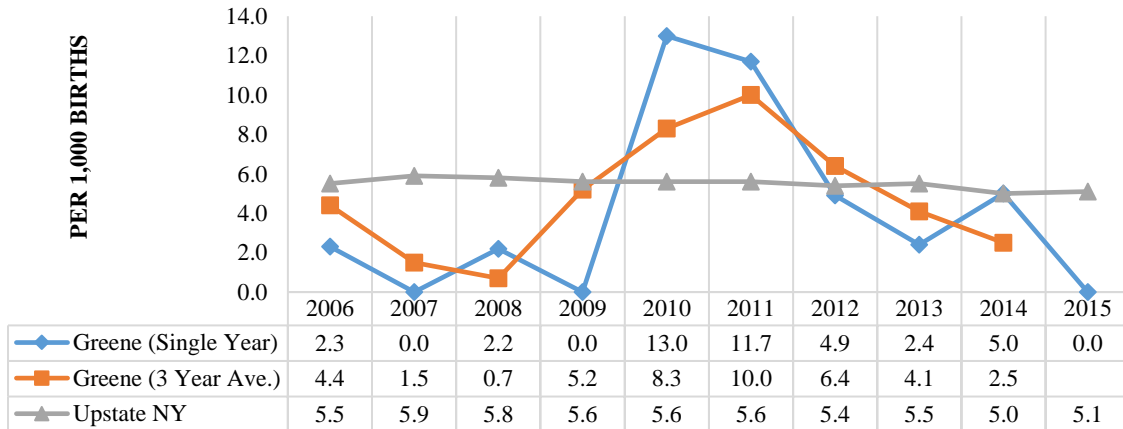
PERCENT PREMATURE BIRTHS WITH <37 WEEKS GESTATION, GREENE COUNTY, AND NYS EXCL. NYC, 2006 TO 2015 ¹²



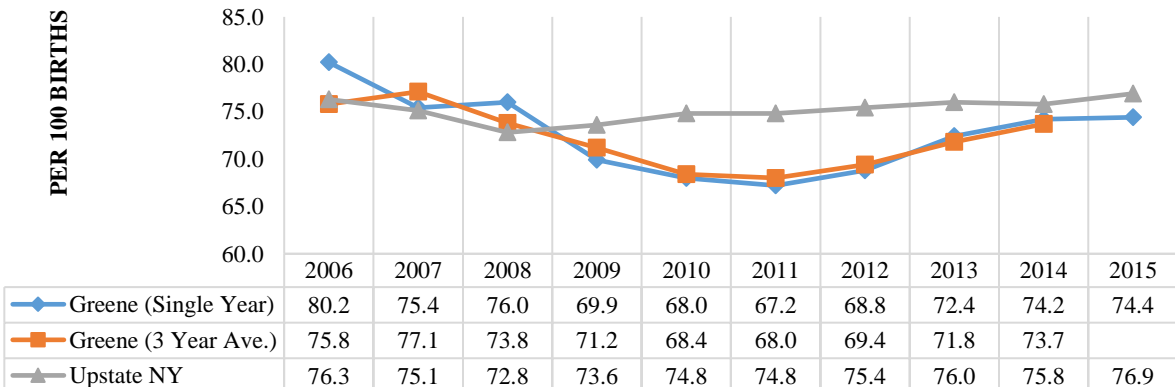
PERCENT LOW BIRTH WEIGHT BIRTHS (<2500 GRAMS), GREENE COUNTY, AND NYS EXCL. NYC, 2006 TO 2015 ¹²



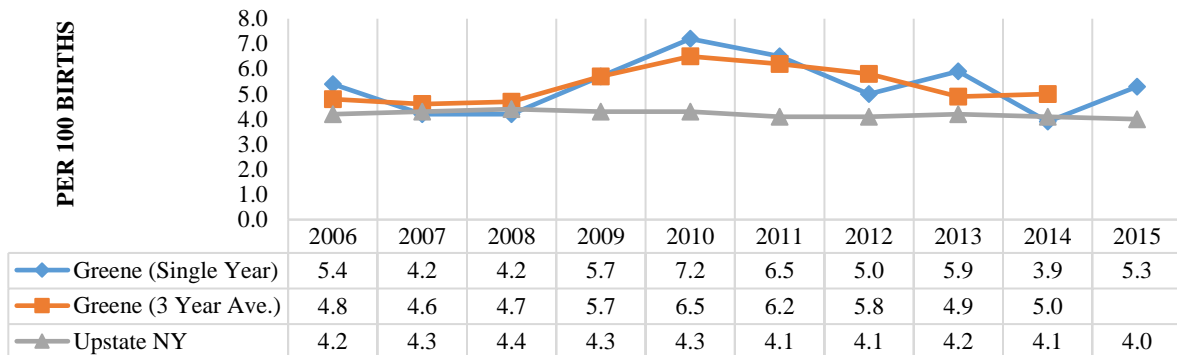
INFANT MORTALITY PER 1,000 BIRTHS, GREENE COUNTY, AND NYS EXCL. NYC, 2006 TO 2015 ¹²



PERCENT OF BIRTHS WITH EARLY(1ST TRIMESTER), GREENE COUNTY, AND NYS EXCL. NYC, 2006 TO 2015¹²



**PERCENT OF BIRTHS WITH LATE(3RD TRIMESTER)
OR NO PRENATAL CARE, GREENE COUNTY, AND NYS
EXCL. NYC, 2006 TO 2015¹²**



Birth Outcomes and Prenatal Care

Highlights:

- Greene’s rate of prematurity was 10.6% and similar to Upstate; its low birth weight rate of 7.2% lower than Upstate.
- Black non-Hispanic births had a 130% higher rate of prematurity compared to white non-Hispanic births (27.3% vs 11.7%), while Hispanic births had a 25% lower prematurity rate (8.9%). White and black non-Hispanic births had higher prematurity rates compared to Upstate.
- Greene’s prematurity rate for non-Medicaid births (11.2%) was actually 25% higher than the County Medicaid births (9.0%).
- Greene’s low birthweight rate was highest in the 35+ year age group (7.7%). Compared to Upstate, Greene’s low birth weight rate was lower for all age groups.
- Black non-Hispanic births had over a 225% higher low birth weight rate compared to white non-Hispanic births (24.2% vs 7.4%), while Hispanic births (3.4%) had an over 50% lower rate. White and black non-Hispanic births had higher low birth weight rates compared to Upstate.
- The early prenatal care rate for Greene County of 73.6% was lower than both the Capital Region and Upstate. Early prenatal care rates increased with age with a low of 55.6% in the <=17 year age group, to a high of 81.5% for women 35+ years of age. Rates for all age groups were lower than Upstate NY.
- Black non-Hispanic women (63.6%) had a 13% lower early prenatal care rate compared to and white non-Hispanic women (73.3%); Hispanic women’s rate (56.7%) was 23% lower. All race/ethnic rates were poorer than Upstate NY.
- The late or no prenatal care rate for Greene County (5.0%) was poorer than both Capital Region and Upstate NY. Women 20-24 years of age had the highest rate of 6.7%.
- Greene’s black non-Hispanic women (9.1%) had 100% higher, and Hispanic women (6.7%) had 50% higher the late or no prenatal care rates compared to white non-Hispanic women (4.5%).

Birth Outcomes and Prenatal Care by Equity, Greene County, Capital Region, and NYS excl. NYC, 2013-2015

	Greene County		Capital Region		Upstate NY
	# (3 yr ave)	% (3 yr ave)	# (3 yr ave)	% (3 yr ave)	% (3 yr ave)
Total Births (2013-15)	398		9,710		120,035
% Premature (<37 weeks)-Total (2013-15)	42	10.6	1,008	10.4	10.6
by Race/Ethnicity^ (2012-14)					
White non-Hispanic	42	11.7	719	10.1	9.9
Black non-Hispanic	3	27.3	154	14.9	15.7
Hispanic	3	8.9	67	9.8	11.9
by Financial Coverage at Birth # (2013-15)					
Medicaid	19	9.0	375	10.9	11.4
Non-Medicaid	24	11.2	642	10.3	10.4
% Low Birthweight (<2.5kg.)-Total (2013-15)	29	7.2	724	7.5	7.7
by Age (2013-15)					
<=17 years	0	0.0	12	10.3	9.1
18-19 years	1	7.1	22	6.9	8.7
20-34 years	21	6.7	535	7.1	7.2
35+ years	5	7.7	153	8.8	8.6
by Race/Ethnicity^ (2012-14)					
White non-Hispanic	26	7.4	477	6.7	6.8
Black non-Hispanic	3	24.2	138	13.4	12.8
Hispanic	1	3.4	50	7.3	7.3
% Early (1st Trimester) Prenatal Care*-Total (2013-15)	288	73.6	7,368	77.3	76.3
by Age (2013-15)					
<=17 years	2	55.6	58	49.6	52.7
18-19 years	8	57.1	204	63.9	62.3
20-24 years	63	66.3	1,158	68.4	69.4
25-34 years	168	76.0	4,685	80.2	80.5
35+ years	53	81.5	1,429	82.2	82.0
by Race/Ethnicity^ (2012-14)					
White non-Hispanic	261	73.3	5,654	79.5	79.7
Black non-Hispanic	7	63.6	656	63.5	65.9
Hispanic	17	56.7	459	67.0	69.7
% Late (3rd Trimester) or No Prenatal Care*-Total (2013-15)	20	5.0	411	4.3	4.1
by Age (2013-15)					
<=17 years	0	0.0	13	10.8	11.9
18-19 years	2	4.8	25	7.7	7.9
20-24 years	6	6.7	119	7.0	6.1
25-34 years	9	4.1	209	3.6	3.5
35+ years	4	5.6	51	2.9	3.1
by Race/Ethnicity^ (2012-14)					
White non-Hispanic	16	4.5	249	3.5	3.1
Black non-Hispanic	1	9.1	88	8.5	7.9
Hispanic	2	6.7	43	6.3	5.5
^ for births with known race/ethnicity					
# for births with known coverage					
* for births with known prenatal care					
Red= fewer than 10 events in numerator, therefore the rate is unstable					

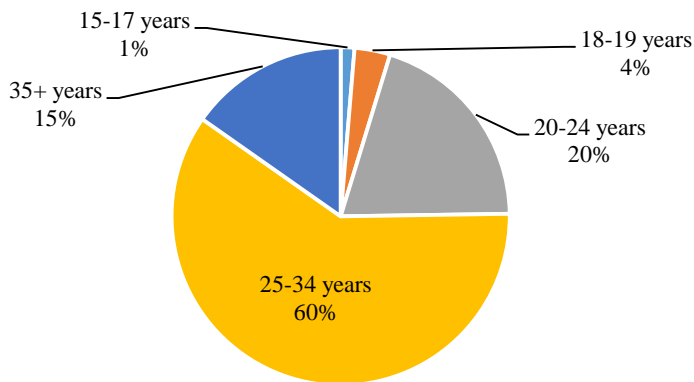
Rensselaer County

Birth Distribution

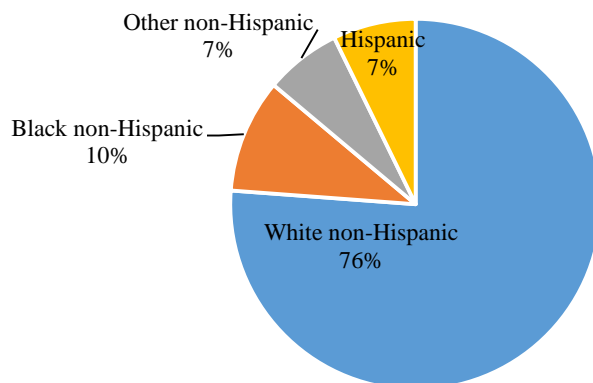
Highlights:

- Rensselaer averaged 1,670 births per year.
- About 4.7% of Rensselaer County births were to women < 20 years of age; 15.3% were to women 35+ years of age.
- Rensselaer County had a lower percentage of black non-Hispanic (9.9%), other non-Hispanic (6.6%) births than both the Capital Region and Upstate NY; Hispanic births (7.2%) were similar to the Capital Region, but much lower than Upstate NY.
- About 42% of Rensselaer's births were covered by Medicaid.

Average Number of Births by Maternal Age, Rensselaer County, 2013-15 (N=1,672) ¹¹



Average Number of Births by Race/Ethnicity, Rensselaer County, 2013-15 (N=1,672) ¹¹



**Births by Outcomes and Equity, Rensselaer County, Capital Region, and NYS excl. NYC,
2013-2015**

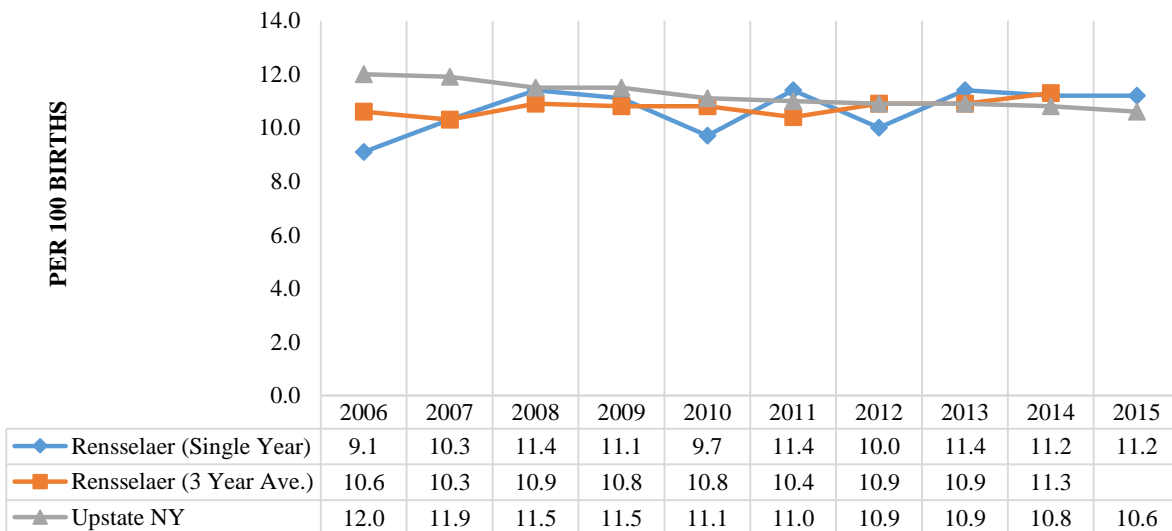
	Rensselaer County		Capital Region		Upstate NY
	# (3 yr ave)	% (3 yr ave)	# (3 yr ave)	% (3 yr ave)	% (3 yr ave)
Total Births	1,672		9,710		120,035
Outcomes					
Births < 37 Weeks Gest.	187	11.2	1,008	10.4	10.6
Births < 2,500 grams	131	7.8	724	7.5	7.6
Infant Mortality/1,000 births	12	7.0	57	5.9	5.2
Age					
<=17 years	22	1.3	117	1.2	1.2
18-19 years	57	3.4	319	3.3	3.4
20-34 years	1,338	80.0	7,536	77.6	75.7
35+ years	255	15.3	1,739	17.9	19.6
Race/Ethnicity[^]					
White non-Hispanic	1,273	76.2	7,035	72.5	65.1
Black non-Hispanic	166	9.9	999	10.3	10.1
Other non-Hispanic	111	6.6	970	10.0	7.7
Hispanic	121	7.2	695	7.2	17.1
Financial Coverage at Birth #					
Medicaid	703	42.2	3,442	35.6	42.4
Self-Pay	20	1.2	124	1.3	1.5
Other	943	56.6	6,105	63.1	56.1
Prenatal Care*					
Early (1st Trimester)	1,256	76.7	7,368	77.3	76.3
Late (3rd Trimester) or no	73	4.5	411	4.3	4.1
[^] for births with known race/ethnicity					
# for births with known coverage					
* for births with known prenatal care					

Birth Indicator Trends

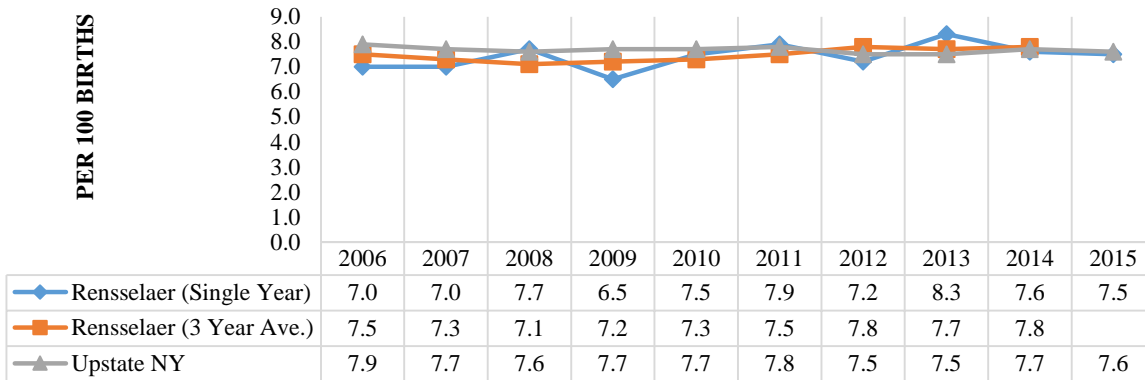
Highlights:

- Rensselaer’s prematurity rates was lower than Upstate through most of the decade, but has been higher over the last 3 years. Rensselaer’s rate increased 23% over the last decade, while the Upstate rate decreased 12%.
- Rensselaer had mostly lower low birthweight rates compared to Upstate, but showed a 7% increase in the rate over the last decade.
- Rensselaer’s infant mortality rate fluctuated over the decade but showed an increasing trend since 2011. The 2013-15 rate was an increase of 15% over the 2005-2007 rate.
- Over the first half of the last decade, Rensselaer’s early prenatal care rates were higher than Upstate but showed a decreasing trend, then leveling off from 2010 to 2014. Rensselaer’s rate of 80.5% in 2015 was the highest of the decade.
- Over the last decade, Rensselaer had consistently poorer late or no prenatal care rates than Upstate. However, the 2015 rate of 3.9% was the lowest in the decade.

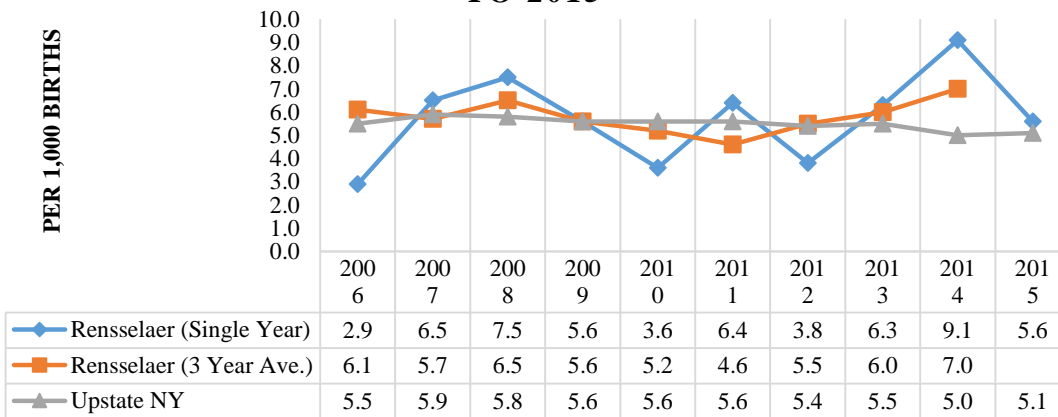
PERCENT PREMATURE BIRTHS WITH <37 WEEKS GESTATION, RENSSELAER COUNTY, AND NYS EXCL. NYC, 2006 TO 2015 ¹²



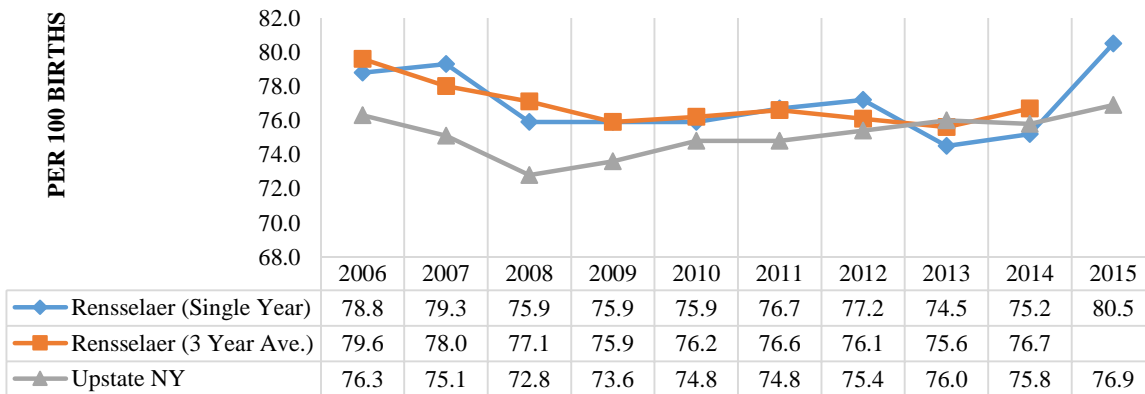
PERCENT LOW BIRTH WEIGHT BIRTHS (<2500 GRAMS), RENSSELAER COUNTY, AND NYS EXCL. NYC, 2006 TO 2015 ¹²



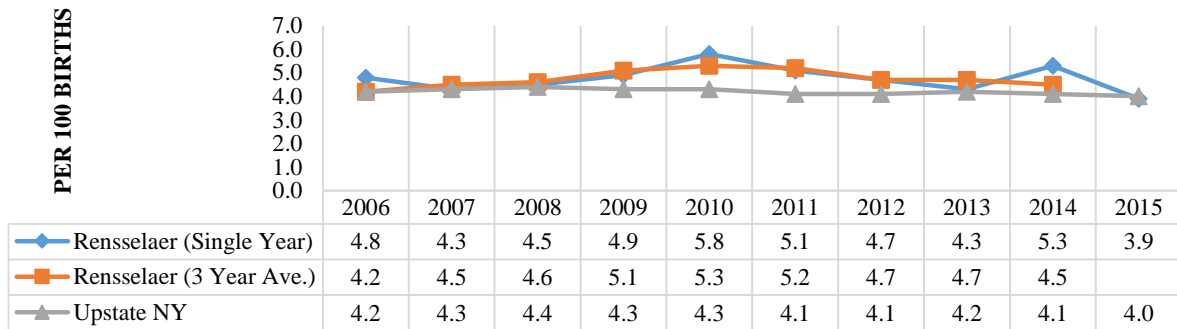
INFANT MORTALITY PER 1,000 BIRTHS, RENSSELAER COUNTY, AND NYS EXCL. NYC, 2006 TO 2015 ¹²



PERCENT OF BIRTHS WITH EARLY (1ST TRIMESTER), RENSSELAER COUNTY, AND NYS EXCL. NYC, 2006 TO 2015 ¹²



**PERCENT OF BIRTHS WITH LATE(3RD TRIMESTER)
OR NO PRENATAL CARE, RENSSELAER COUNTY, AND
NYS EXCL. NYC, 2006 TO 2015 ¹²**



Birth Outcomes and Prenatal Care

Highlights:

- Rensselaer had a higher prematurity rate of 11.2%, and low birthweight rate of 7.8% than both the Capital Region and Upstate NY.
- Black non-Hispanic births had a rate of prematurity that was 1.6 times higher than the white non-Hispanic population (16.7% 10.4%), while Hispanic births had a lower rate (9.5%). Black and white non-Hispanic births in Rensselaer had higher prematurity rates compared to Upstate.
- Rensselaer’s prematurity rate for Medicaid births (11.2%) was slightly lower than the County non-Medicaid births (11.3%).
- The low birth weight rate was higher in the ≤17 year (9.1%) and 35+ year (9.0%) age groups.
- Black non-Hispanic births had 1.8 times the low birth weight compared to white non-Hispanic births (13.1% vs 7.4%). Hispanic births (6.5%) had a lower rate. Black and white non-Hispanic births in Rensselaer had higher low birth weight rates compared to Upstate.
- The early prenatal care rate for Rensselaer County improved with age, from 45.5% for women ≤17 years to 82.4% for women 35+ years of age.
- Black non-Hispanic women (59.1%) had a 25% lower early care rate compared to white non-Hispanic women (78.4%). Hispanic women (68.4%) had a 13% lower rate. All early prenatal care rates were lower than comparable Upstate rates.
- The late or no prenatal care rate for Rensselaer County improved with age, from 15.2% for women ≤17 years to 2.6% for women 35+ years of age.
- Rensselaer’s Black non-Hispanic women had twice the late or no prenatal rate compared to white non-Hispanic women (8.4% vs 4.2%) while Hispanic women (3.6%) had a 14% lower rate. The white and black non-Hispanic groups had rates higher than Upstate.

Birth Outcomes and Prenatal Care by Equity, Rensselaer County, Capital Region, and NYS excl. NYC, 2013-2015

	Rensselaer County		Capital Region		Upstate NY
	# (3 yr ave)	% (3 yr ave)	# (3 yr ave)	% (3 yr ave)	% (3 yr ave)
Total Births (2013-15)	1,672		9,710		120,035
% Premature (<37 weeks)-Total (2013-15)	187	11.2	1,008	10.4	10.6
by Race/Ethnicity^ (2012-14)					
White non-Hispanic	133	10.4	719	10.1	9.9
Black non-Hispanic	28	16.7	154	14.9	15.7
Hispanic	11	9.5	67	9.8	11.9
by Financial Coverage at Birth # (2013-15)					
Medicaid	81	11.2	375	10.9	11.4
Non-Medicaid	115	11.3	642	10.3	10.4
% Low Birthweight (<2.5kg.)-Total (2013-15)	131	7.8	724	7.5	7.7
by Age (2013-15)					
<=17 years	2	9.1	12	10.3	9.1
18-19 years	3	5.3	22	6.9	8.7
20-34 years	102	7.6	535	7.1	7.2
35+ years	23	9.0	153	8.8	8.6
by Race/Ethnicity^ (2012-14)					
White non-Hispanic	95	7.4	477	6.7	6.8
Black non-Hispanic	22	13.1	138	13.4	12.8
Hispanic	7	6.5	50	7.3	7.3
% Early (1st Trimester) Prenatal Care*-Total (2013-15)	1,256	76.7	7,368	77.3	76.3
by Age (2013-15)					
<=17 years	10	45.5	58	49.6	52.7
18-19 years	36	63.2	204	63.9	62.3
20-24 years	228	68.1	1,158	68.4	69.4
25-34 years	801	79.9	4,685	80.2	80.5
35+ years	210	82.4	1,429	82.2	82.0
by Race/Ethnicity^ (2012-14)					
White non-Hispanic	1,006	78.4	5,654	79.5	79.7
Black non-Hispanic	98	59.1	656	63.5	65.9
Hispanic	77	68.4	459	67.0	69.7
% Late (3rd Trimester) or No Prenatal Care*-Total (2013-15)	73	4.5	411	4.3	4.1
by Age (2013-15)					
<=17 years	3	15.2	13	10.8	11.9
18-19 years	4	6.4	25	7.7	7.9
20-24 years	22	6.6	119	7.0	6.1
25-34 years	39	3.9	209	3.6	3.5
35+ years	7	2.6	51	2.9	3.1
by Race/Ethnicity^ (2012-14)					
White non-Hispanic	54	4.2	249	3.5	3.1
Black non-Hispanic	14	8.4	88	8.5	7.9
Hispanic	4	3.6	43	6.3	5.5
^ for births with known race/ethnicity					
# for births with known coverage					
* for births with known prenatal care					
Red= fewer than 10 events in numerator, therefore the rate is unstable					

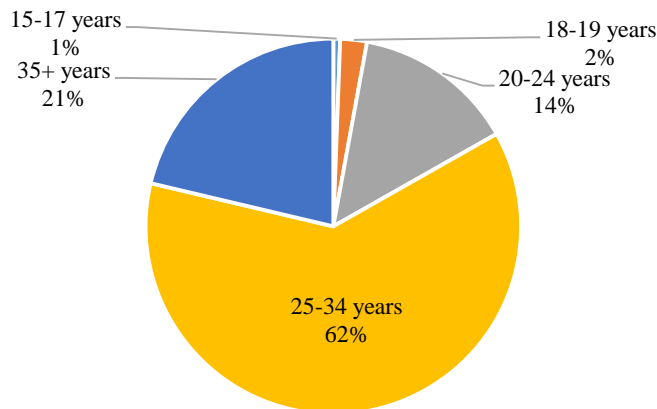
Saratoga County

Birth Distribution

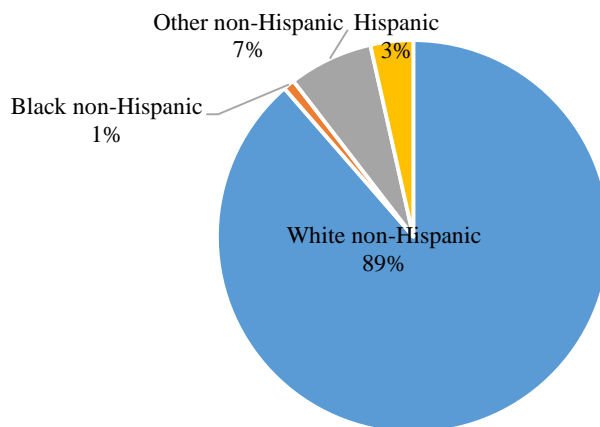
Highlights:

- Saratoga averaged 2,220 births per year.
- About 2.9% of Saratoga County births were to women < 20 years of age; 21.3% were to women 35+ years of age. The percent of births to women 35+ years of age was higher than both the Capital Region and Upstate NY.
- Saratoga County had a lower percentage of black non-Hispanic (0.9%), other non-Hispanic (6.9%) and Hispanic (3.5%) births than both the Capital Region and Upstate NY.
- About 21% of Saratoga's births were covered by Medicaid, much lower than the Capital Region and Upstate.

Average Number of Births by Maternal Age, Saratoga County, 2013-15 (N=2,220) ¹¹



Average Number of Births by Race/Ethnicity, Saratoga County, 2013-15 (N=2,220) ¹¹



**Births by Outcomes and Equity, Saratoga County, Capital Region, and NYS excl. NYC,
2013-2015**

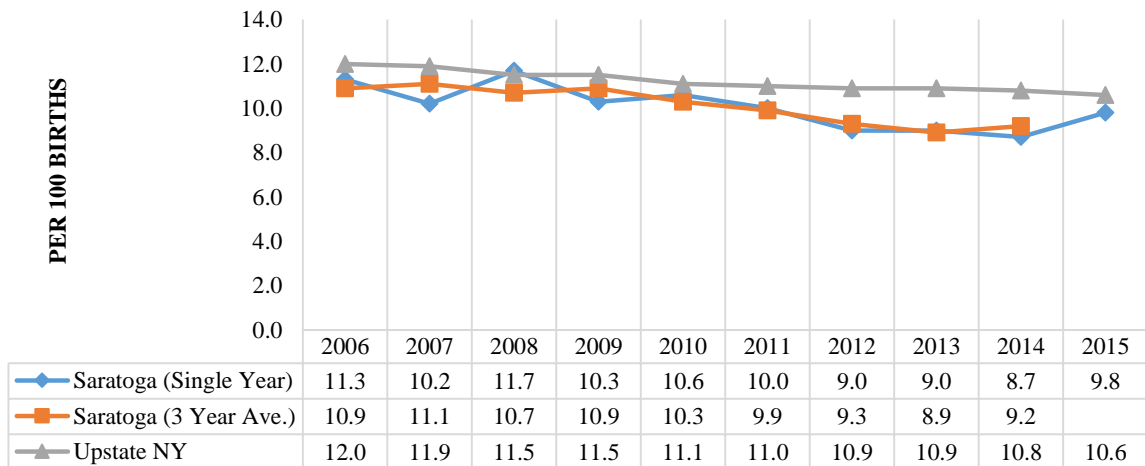
	Saratoga County		Capital Region		Upstate NY
	# (3 yr ave)	% (3 yr ave)	# (3 yr ave)	% (3 yr ave)	% (3 yr ave)
Total Births	2,220		9,710		120,035
Outcomes					
Births < 37 Weeks Gest.	202	9.1	1,008	10.4	10.6
Births < 2,500 grams	143	6.4	724	7.5	7.6
Infant Mortality/1,000 births	7	3.3	57	5.9	5.2
Age					
<=17 years	13	0.6	117	1.2	1.2
18-19 years	51	2.3	319	3.3	3.4
20-34 years	1,683	75.8	7,536	77.6	75.7
35+ years	473	21.3	1,739	17.9	19.6
Race/Ethnicity[^]					
White non-Hispanic	1,966	88.6	7,035	72.5	65.1
Black non-Hispanic	21	0.9	999	10.3	10.1
Other non-Hispanic	154	6.9	970	10.0	7.7
Hispanic	78	3.5	695	7.2	17.1
Financial Coverage at Birth #					
Medicaid	467	21.1	3,442	35.6	42.4
Self-Pay	20	0.9	124	1.3	1.5
Other	1,730	78.0	6,105	63.1	56.1
Prenatal Care[*]					
Early (1st Trimester)	1,747	79.5	7,368	77.3	76.3
Late (3rd Trimester) or no	69	3.1	411	4.3	4.1
[^] for births with known race/ethnicity					
[#] for births with known coverage					
[*] for births with known prenatal care					

Birth Indicator Trends

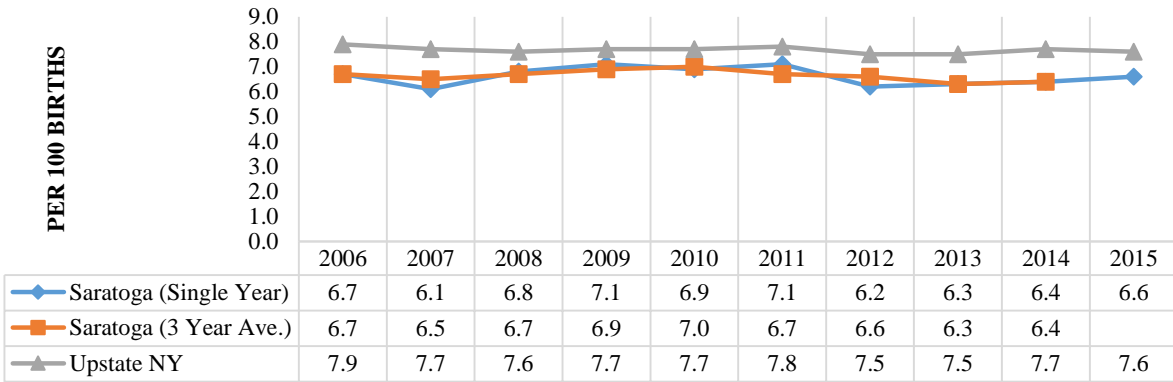
Highlights:

- Saratoga’s prematurity rate decreased from 2006 to 2012 then leveled off, but overall showed a 13% decrease over the past decade. Saratoga’s rates and were consistently lower than Upstate.
- Over the last decade, Saratoga had consistently lower low birthweight rates compared to Upstate, but showed little change from 2006 to 2015.
- Though variable, Saratoga’s infant mortality rate showed an increasing trend during the early part of the decade and a decreasing trend in the latter part. Saratoga’s rate was consistently lower than Upstate.
- Saratoga’s early prenatal care rates were consistently higher than Upstate; there was a decreasing trend during the first part of the last decade, and increasing trend during the latter half. Saratoga’s rate in 2015 was 6% lower than its early prenatal care rate in 2006.
- Over the last decade, Saratoga had consistently better late or no prenatal care rates than Upstate. There was an increasing trend through 2011 and a decreasing trend through 2015.

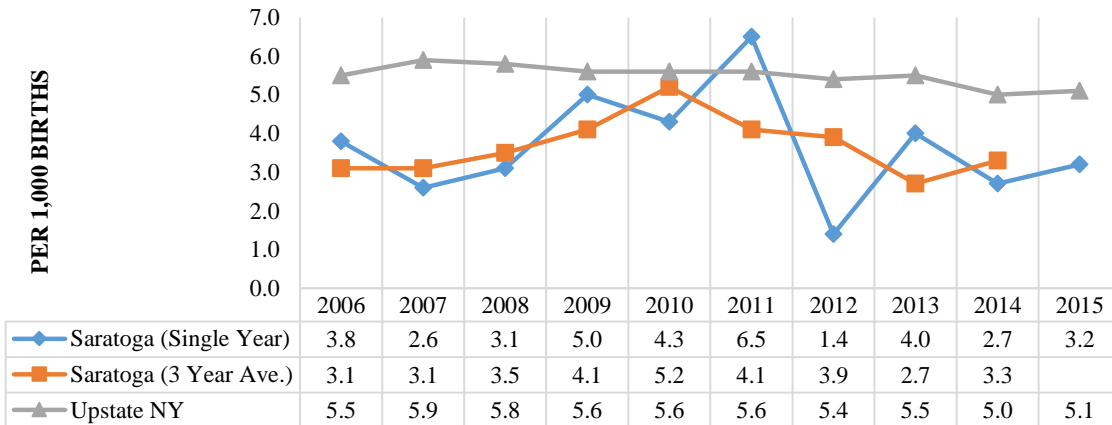
PERCENT PREMATURE BIRTHS WITH <37 WEEKS GESTATION, SARATOGA COUNTY, AND NYS EXCL. NYC, 2006 TO 2015 ¹²



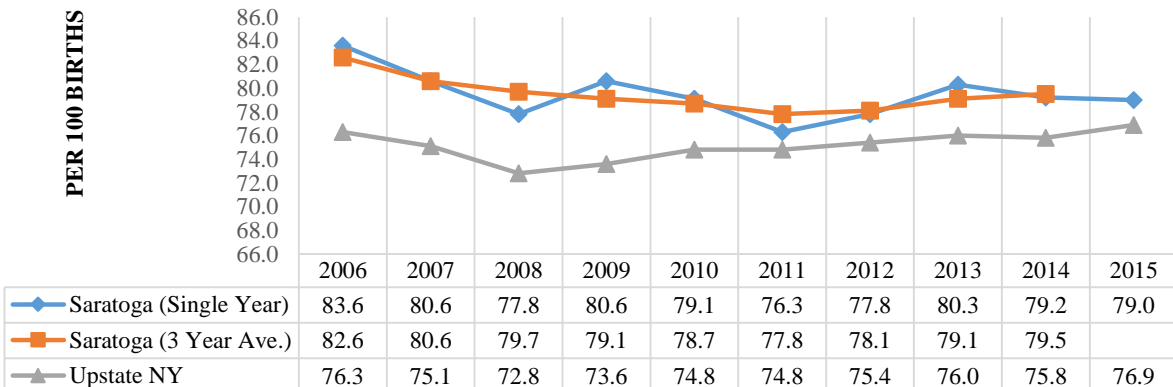
PERCENT LOW BIRTH WEIGHT BIRTHS (<2500 GRAMS), SARATOGA COUNTY, AND NYS EXCL. NYC, 2006 TO 2015 ¹²



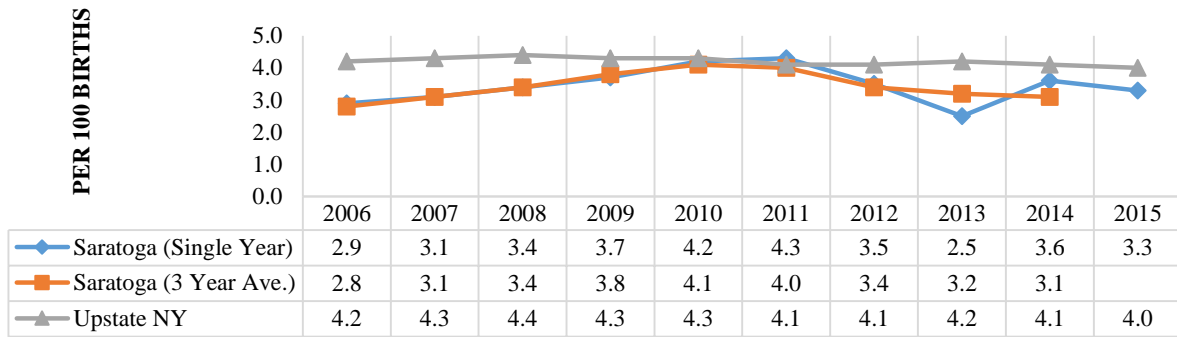
INFANT MORTALITY PER 1,000 BIRTHS, SARATOGA COUNTY, AND NYS EXCL. NYC, 2006 TO 2015 ¹²



PERCENT OF BIRTHS WITH EARLY(1ST TRIMESTER), SARATOGA COUNTY, AND NYS EXCL. NYC, 2006 TO 2015 ¹²



**PERCENT OF BIRTHS WITH LATE(3RD TRIMESTER)
OR NO PRENATAL CARE, SARATOGA COUNTY, AND
NYS EXCL. NYC, 2006 TO 2015 ¹²**



Birth Outcomes and Prenatal Care

Highlights:

- Saratoga had a lower prematurity rate (9.1%) and low birth weight rate (6.4%) than both the Capital Region and Upstate NY.
- Black non-Hispanic births had similar prematurity rates as white non-Hispanic births (9.1% vs 8.9%), while Hispanic births had a 45% higher prematurity rate (12.9%) than the white non-Hispanic population. Hispanic births had higher prematurity rates compared to the Capital Region and Upstate.
- Saratoga’s prematurity rate for non-Medicaid births (9.2%) was 5% higher than the County Medicaid births (8.7%). Both rates lower than the comparable Upstate rates.
- Saratoga’s low birth weight rate was highest in the 35+ year age group (8.2%).
- Black non-Hispanic births had 27% higher the low birth weight compared to white non-Hispanic births (7.6% vs 6.0%), Hispanic births (9.0%) had a 50% higher low birth weight rate. Only the Hispanic births had a higher low birth weight rate compared to Upstate.
- The early prenatal care rate for Saratoga County increased with age from 61.5% for women <=17 years to 83.5% for women 35+ years of age.
- Black non-Hispanic women (67.7%) had a 15% lower early care rate compared to white-non-Hispanic women (79.5%). Hispanic women (75.1%) had a 5% lower rate.
- The late or no prenatal care rate for Saratoga County decreased with age from 15.4% for women <=17 years to 2.6% for women 35+ years of age.
- Saratoga’s Black non-Hispanic women had three times the late or no prenatal rate compared to white non-Hispanic women (9.1% vs 3.0%). Hispanic women (6.0%) had twice the white non-Hispanic rate. The black non-Hispanic, and Hispanic groups had rates higher than Upstate.

Birth Outcomes and Prenatal Care by Equity, Saratoga County, Capital Region, and NYS excl. NYC, 2013-2015

	Saratoga County		Capital Region		Upstate NY
	# (3 yr ave)	% (3 yr ave)	# (3 yr ave)	% (3 yr ave)	% (3 yr ave)
Total Births (2013-15)	2,220		9,710		120,035
% Premature (<37 weeks)-Total (2013-15)	202	9.1	1,008	10.4	10.6
by Race/Ethnicity^ (2012-14)					
White non-Hispanic	177	8.9	719	10.1	9.9
Black non-Hispanic	2	9.1	154	14.9	15.7
Hispanic	9	12.9	67	9.8	11.9
by Financial Coverage at Birth # (2013-15)					
Medicaid	37	8.7	375	10.9	11.4
Non-Medicaid	167	9.2	642	10.3	10.4
% Low Birthweight (<2.5kg.)-Total (2013-15)	143	6.4	724	7.5	7.7
by Age (2013-15)					
<=17 years	1	7.7	12	10.3	9.1
18-19 years	4	7.8	22	6.9	8.7
20-34 years	98	5.8	535	7.1	7.2
35+ years	39	8.2	153	8.8	8.6
by Race/Ethnicity^ (2012-14)					
White non-Hispanic	119	6.0	477	6.7	6.8
Black non-Hispanic	2	7.6	138	13.4	12.8
Hispanic	6	9.0	50	7.3	7.3
% Early (1st Trimester) Prenatal Care*-Total (2013-15)	1,747	79.5	7,368	77.3	76.3
by Age (2013-15)					
<=17 years	8	61.5	58	49.6	52.7
18-19 years	35	68.6	204	63.9	62.3
20-24 years	212	68.6	1,158	68.4	69.4
25-34 years	1,121	81.6	4,685	80.2	80.5
35+ years	395	83.5	1,429	82.2	82.0
by Race/Ethnicity^ (2012-14)					
White non-Hispanic	1,580	79.5	5,654	79.5	79.7
Black non-Hispanic	15	67.7	656	63.5	65.9
Hispanic	50	75.1	459	67.0	69.7
% Late (3rd Trimester) or No Prenatal Care*-Total (2013-15)	69	3.1	411	4.3	4.1
by Age (2013-15)					
<=17 years	2	15.4	13	10.8	11.9
18-19 years	2	4.6	25	7.7	7.9
20-24 years	16	5.2	119	7.0	6.1
25-34 years	37	2.7	209	3.6	3.5
35+ years	12	2.6	51	2.9	3.1
by Race/Ethnicity^ (2012-14)					
White non-Hispanic	59	3.0	249	3.5	3.1
Black non-Hispanic	2	9.1	88	8.5	7.9
Hispanic	4	6.0	43	6.3	5.5
^ for births with known race/ethnicity					
# for births with known coverage					
* for births with known prenatal care					
Red= fewer than 10 events in numerator, therefore the rate is unstable					

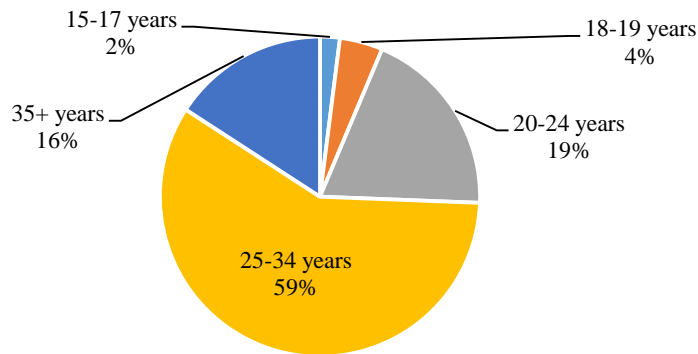
Schenectady County

Birth Distribution

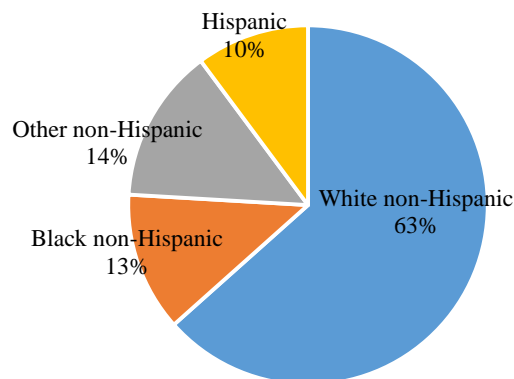
Highlights:

- Schenectady averaged 1,750 births per year.
- About 6.3% of Schenectady County births were to women < 20 years of age, a much younger birthing population than the Capital Region and Upstate NY; 15.8% were to women 35+ years of age.
- Schenectady County had a higher percentage of black non-Hispanic (12.5%) and other non-Hispanic (13.9%) births than both the Capital Region and Upstate NY; Hispanic births (10.2%) were higher than the Capital Region, but much lower than Upstate NY.
- About 34% of Schenectady's births were covered by Medicaid.

Average Number of Births by Maternal Age, Schenectady County, 2013-15 (N=1,749) ¹¹



Average Number of Births by Race/Ethnicity, Schenectady County, 2013-15 (N=1,749) ¹¹



**Births by Outcomes and Equity, Schenectady County, Capital Region, and NYS excl. NYC,
2013-2015**

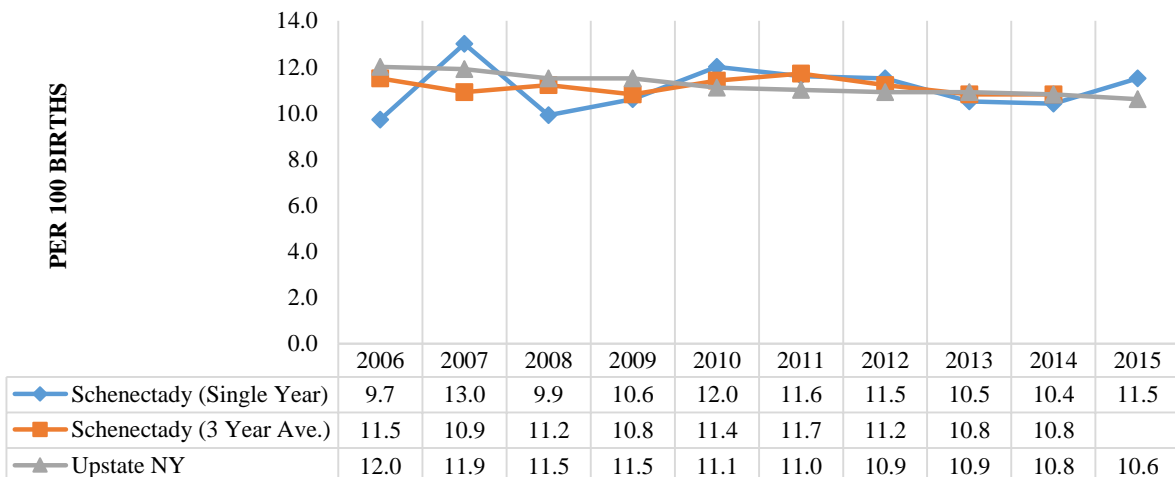
	Schenectady County		Capital Region		Upstate NY
	# (3 yr ave)	% (3 yr ave)	# (3 yr ave)	% (3 yr ave)	% (3 yr ave)
Total Births	1,749		9,710		120,035
Outcomes					
Births < 37 Weeks Gest.	188	10.7	1,008	10.4	10.6
Births < 2,500 grams	139	7.9	724	7.5	7.6
Infant Mortality/1,000 births	15	8.8	57	5.9	5.2
Age					
<=17 years	35	2.0	117	1.2	1.2
18-19 years	76	4.3	319	3.3	3.4
20-34 years	1,361	77.8	7,536	77.6	75.7
35+ years	277	15.8	1,739	17.9	19.6
Race/Ethnicity[^]					
White non-Hispanic	1,109	63.4	7,035	72.5	65.1
Black non-Hispanic	219	12.5	999	10.3	10.1
Other non-Hispanic	243	13.9	970	10.0	7.7
Hispanic	178	10.2	695	7.2	17.1
Financial Coverage at Birth #					
Medicaid	596	34.1	3,442	35.6	42.4
Self-Pay	30	1.7	124	1.3	1.5
Other	1,122	64.2	6,105	63.1	56.1
Prenatal Care*					
Early (1st Trimester)	1,363	79.1	7,368	77.3	76.3
Late (3rd Trimester) or no	70	4.0	411	4.3	4.1
[^] for births with known race/ethnicity					
# for births with known coverage					
* for births with known prenatal care					

Birth Indicator Trends

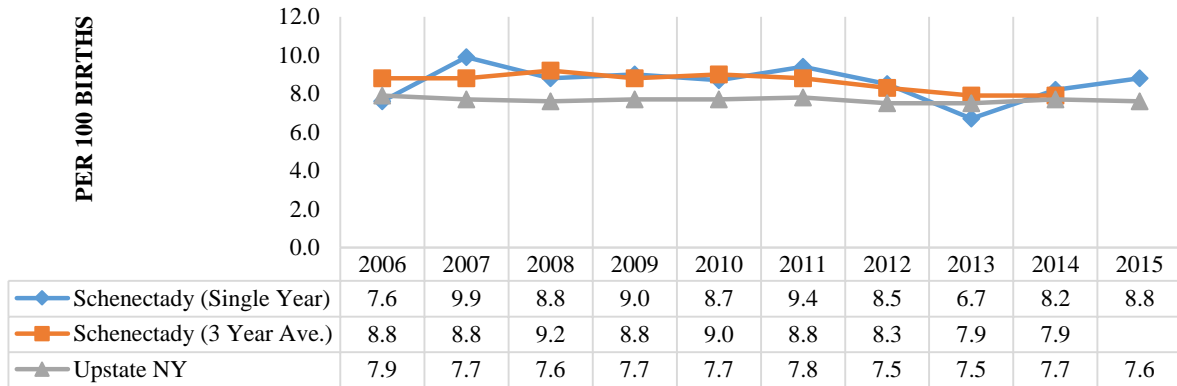
Highlights:

- Schenectady’s poor birth outcome indicators showed an increase between 2014 and 2015.
- Schenectady’s prematurity rates increased during the early part of last decade through 2010, and decreased through 2014. Overall, Schenectady’s rate decreased 6% between 2005-07 and 2013-15.
- Over the last decade, Schenectady had higher low birthweight rates compared to Upstate, but showed a 10% decrease in the rate between 2005-07 and 2013-15.
- Schenectady’s infant mortality rate fluctuated over the decade; showed a decreasing trend through 2009 and an increasing trend thereafter. Schenectady’s rate was consistently higher than Upstate NY.
- Over the last decade, Schenectady’s early prenatal care rates were higher than Upstate and showed an improving trend. Schenectady’s rate of 80.4% in 2015 was the highest of the decade.
- Schenectady’s late or no prenatal care rates decreased through 2009 then leveling off through 2014 followed by a spike in 2015. The County showed a 27% reduction from 2005-07 to 2013-15.

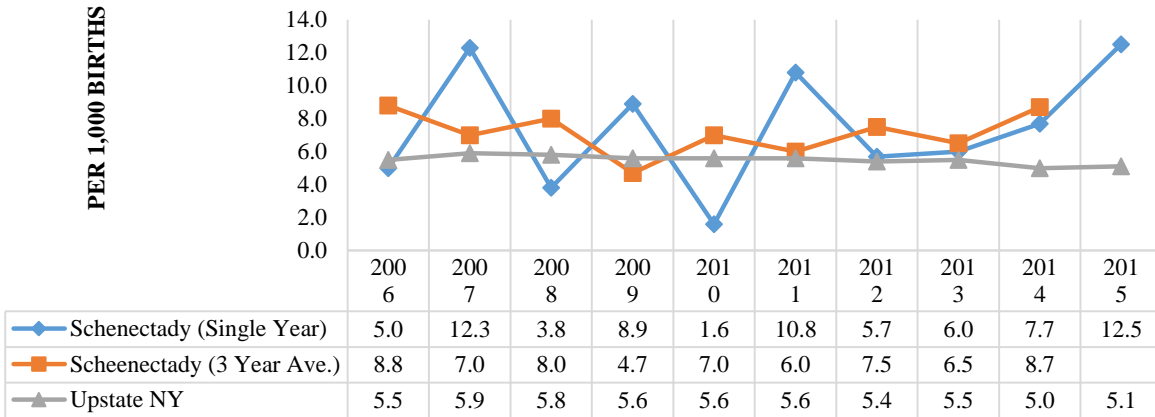
PERCENT PREMATURE BIRTHS WITH <37 WEEKS GESTATION, SCHENECTADY COUNTY, AND NYS EXCL. NYC, 2006 TO 2015 ¹²



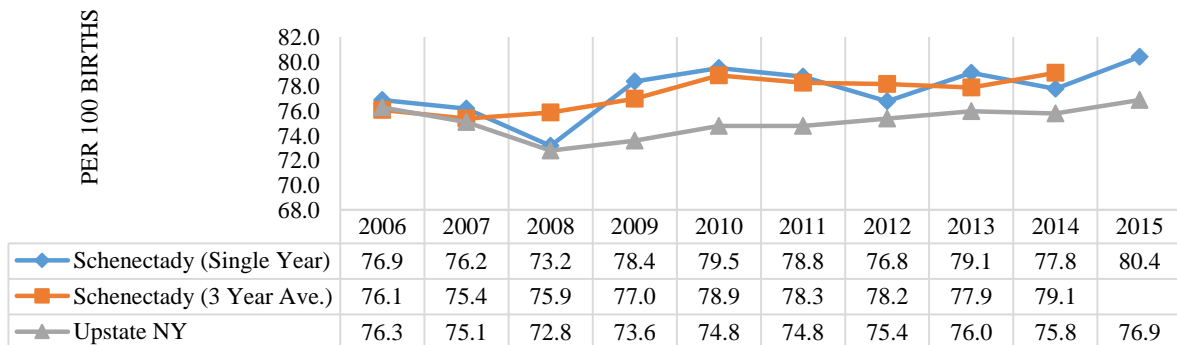
PERCENT LOW BIRTH WEIGHT BIRTHS (<2500 GRAMS), SCHENECTADY COUNTY, AND NYS EXCL. NYC, 2006 TO 2015 ¹²



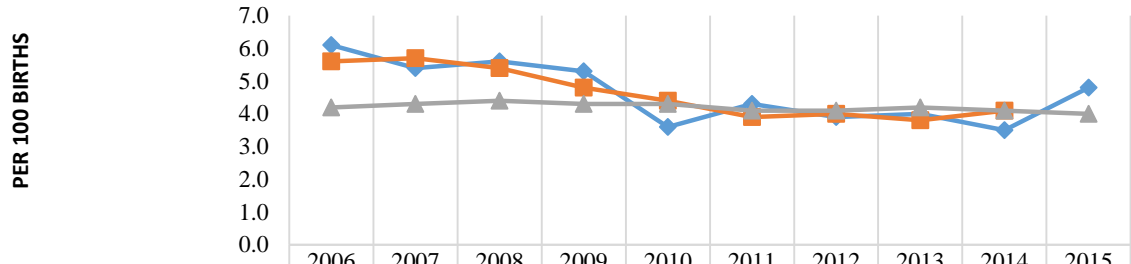
INFANT MORTALITY PER 1,000 BIRTHS, SCHENECTADY COUNTY, AND NYS EXCL. NYC, 2006 TO 2015 ¹²



PERCENT OF BIRTHS WITH EARLY (1ST TRIMESTER), SCHENECTADY COUNTY, AND NYS EXCL. NYC, 2006 TO 2015 ¹²



**PERCENT OF BIRTHS WITH LATE(3RD TRIMESTER)
OR NO PRENATAL CARE, SCHENECTADY COUNTY,
AND NYS EXCL. NYC, 2006 TO 2015 ¹²**



	2006	2007	2008	2009	2010	2011	2012	2013	2014	2015
◆ Schenectady (Single Year)	6.1	5.4	5.6	5.3	3.6	4.3	3.9	4.0	3.5	4.8
■ Schenectady (3 Year Ave.)	5.6	5.7	5.4	4.8	4.4	3.9	4.0	3.8	4.1	
▲ Upstate NY	4.2	4.3	4.4	4.3	4.3	4.1	4.1	4.2	4.1	4.0

Birth Outcomes and Prenatal Care

Highlights:

- Schenectady had a higher prematurity rate (10.7%), and low birth weight rate (7.9%) than both the Capital Region and Upstate NY.
- Black non-Hispanic births had a 15% higher the rate of prematurity compared to white non-Hispanic births (12.8% vs 11.1%); Hispanic births had a 32% lower prematurity rate (7.6%). Only white non-Hispanic births had higher prematurity rates compared to the Capital Region and Upstate.
- Schenectady's prematurity rate for Medicaid births (11.8%) was 12% higher than County non-Medicaid births (10.5%).
- Schenectady's low birth weight rate was higher in the ≤ 17 year (11.4%) and 35+ year (11.9%) age groups.
- Black non-Hispanic births had a 48% higher the low birth weight compared to white non-Hispanic births (10.8% vs 7.3%); Hispanic births (7.1%) a similar low birth weight rate. Only white non-Hispanic births in Schenectady had higher low birth weight rates compared to the Capital Region and Upstate.
- The early prenatal care rate for Schenectady were higher than the Capital Region and Upstate; the rate increased with age from 57.1% for women ≤ 17 years to 82.3% for women 35+ years of age.
- Black non-Hispanic women (64.8%) had a 21% lower early care rate compared to white-non-Hispanic women (82.1%); Hispanic women (71.2%) had a 13% lower rate. All early prenatal care rates were better than comparable Upstate rates.
- The late or no prenatal care rate for Schenectady County was highest in the 18-19 year age group (7.0%) and lowest in women 35+ years of age (2.4%).
- Black non-Hispanic women had over twice the late or no prenatal rate compared to white non-Hispanic women (5.9% vs 2.8%). Hispanic women (5.0%) had an 80% higher rate. All groups had lower rates than the Capital Region and Upstate.

Birth Outcomes and Prenatal Care by Equity, Schenectady County, Capital Region, and NYS excl. NYC, 2013-2015

	Schenectady County		Capital Region		Upstate NY
	# (3 yr ave)	% (3 yr ave)	# (3 yr ave)	% (3 yr ave)	% (3 yr ave)
Total Births (2013-15)	1,749		9,710		120,035
% Premature (<37 weeks)-Total (2013-15)	188	10.7	1,008	10.4	10.6
by Race/Ethnicity^ (2012-14)					
White non-Hispanic	129	11.1	719	10.1	9.9
Black non-Hispanic	28	12.8	154	14.9	15.7
Hispanic	14	7.6	67	9.8	11.9
by Financial Coverage at Birth # (2013-15)					
Medicaid	56	11.8	375	10.9	11.4
Non-Medicaid	124	10.5	642	10.3	10.4
% Low Birthweight (<2.5kg.)-Total (2013-15)	139	7.9	724	7.5	7.7
by Age (2013-15)					
<=17 years	4	11.4	12	10.3	9.1
18-19 years	4	5.3	22	6.9	8.7
20-34 years	98	7.2	535	7.1	7.2
35+ years	33	11.9	153	8.8	8.6
by Race/Ethnicity^ (2012-14)					
White non-Hispanic	85	7.3	477	6.7	6.8
Black non-Hispanic	24	10.8	138	13.4	12.8
Hispanic	13	7.1	50	7.3	7.3
% Early (1st Trimester) Prenatal Care*-Total (2013-15)	1,363	79.1	7,368	77.3	76.3
by Age (2013-15)					
<=17 years	20	57.1	58	49.6	52.7
18-19 years	54	71.1	204	63.9	62.3
20-24 years	249	73.9	1,158	68.4	69.4
25-34 years	835	81.5	4,685	80.2	80.5
35+ years	228	82.3	1,429	82.2	82.0
by Race/Ethnicity^ (2012-14)					
White non-Hispanic	951	82.1	5,654	79.5	79.7
Black non-Hispanic	144	64.8	656	63.5	65.9
Hispanic	128	71.2	459	67.0	69.7
% Late (3rd Trimester) or No Prenatal Care*-Total (2013-15)	70	4.0	411	4.3	4.1
by Age (2013-15)					
<=17 years	2	5.7	13	10.8	11.9
18-19 years	5	7.0	25	7.7	7.9
20-24 years	20	5.8	119	7.0	6.1
25-34 years	34	3.3	209	3.6	3.5
35+ years	7	2.4	51	2.9	3.1
by Race/Ethnicity^ (2012-14)					
White non-Hispanic	33	2.8	249	3.5	3.1
Black non-Hispanic	13	5.9	88	8.5	7.9
Hispanic	9	5.0	43	6.3	5.5
^ for births with known race/ethnicity					
# for births with known coverage					
* for births with known prenatal care					
Red= fewer than 10 events in numerator, therefore the rate is unstable					