

## Appendix II: County-Specific Data

### Table of Contents

Albany County .....	2
Coronary Heart Disease .....	<b>Error! Bookmark not defined.</b>
Heart Attack (Acute Myocardial Infarction).....	6
Congestive Heart Failure.....	8
Cerebrovascular Disease (Stroke).....	10
Columbia .....	12
Coronary Heart Disease .....	14
Heart Attack (Acute Myocardial Infarction).....	16
Congestive Heart Failure.....	18
Cerebrovascular Disease (Stroke).....	20
Greene.....	22
Coronary Heart Disease .....	24
Heart Attack (Acute Myocardial Infarction).....	26
Congestive Heart Failure.....	28
Cerebrovascular Disease (Stroke) .....	30
Rensselaer .....	32
Coronary Heart Disease .....	34
Heart Attack (Acute Myocardial Infarction).....	36
Congestive Heart Failure.....	38
Cerebrovascular Disease (Stroke) .....	40
Saratoga .....	42
Coronary Heart Disease .....	44
Heart Attack (Acute Myocardial Infarction).....	46
Congestive Heart Failure.....	48
Cerebrovascular Disease (Stroke) .....	50
Schenectady.....	52
Coronary Heart Disease .....	54
Heart Attack (Acute Myocardial Infarction) .....	56
Congestive Heart Failure.....	58
Cerebrovascular Disease (Stroke) .....	60

### Data Summary:

#### Coronary Heart Disease (CHD)

- About 420 Albany county residents died from CHD and 690 were hospitalized each year.
- The Albany's age-adjusted CHD mortality and hospitalization rates were lower than Upstate and decreased 40% and 50% respectively over the last decade.
- Albany males had 65% higher age-adjusted CHD mortality and 100% higher hospitalization rates compared to female residents.
- Age-adjusted CHD mortality and hospitalization rates increased with age.
- Black non-Hispanic residents had 10% higher age-adjusted CHD mortality rates and 20% higher hospitalization rates compared to white non-Hispanic residents. Hispanic residents had 30% lower CHD mortality rates and 40% lower hospitalization rates than their white-non-Hispanic counterparts.
- Residents in low socioeconomic neighborhoods in the Albany (SES 1) had 100% higher age-adjusted CHD mortality and 60% higher hospitalization rates compared to residents from high socioeconomic areas (SES 5).

#### Heart Attack (acute myocardial infarction)

- An average of 80 Albany county residents died from heart attack and 415 were hospitalized each year.
- Albany's age-adjusted heart attack mortality and hospitalization rates were lower than Upstate and decreased about 35% and 20% respectively each over the last decade.
- Albany males had 50% higher age-adjusted heart attack mortality and 80% higher hospitalization rates compared to female residents.
- Age-adjusted heart attack mortality and hospitalization rates increased with age.
- Black non-Hispanic residents had 45% higher age-adjusted heart attack mortality rates and almost 15% higher hospitalization rates compared to white non-Hispanic residents. Hispanic residents had 45% lower hospitalization rates than their white-non-Hispanic counterparts.
- Residents in low socioeconomic neighborhoods in Albany (SES 1) had almost 55% higher age-adjusted heart attack mortality and 70% higher hospitalization rates compared to residents from high socioeconomic areas (SES 5).

## **Congestive Health Failure (CHF)**

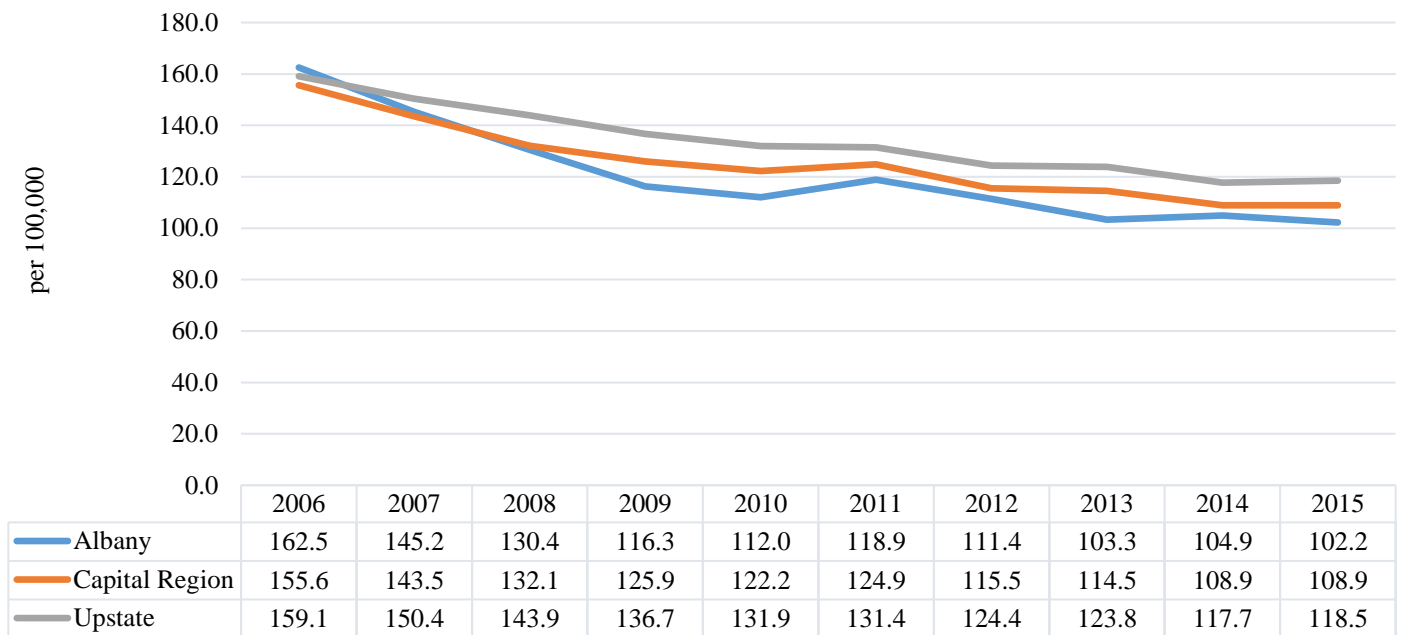
- An average of 80 Albany county residents died from CHF and 720 were hospitalized each year.
- Albany's age-adjusted CHF mortality was higher (11%), but hospitalization rates were lower (16%) than Upstate.
- Albany's age-adjusted CHF mortality and hospitalization trends decreased 12% and 17% respectively over the last decade.
- Albany males had almost 40% higher age-adjusted CHF mortality rate and 35% higher hospitalization rate compared to female residents.
- Age-adjusted CHF mortality and hospitalization rates increased with age.
- Black non-Hispanic residents had a 20% lower age-adjusted CHF mortality rate but 125% higher hospitalization rate compared to white non-Hispanic residents. Hispanic residents had 15% lower hospitalization rates than their white-non-Hispanic counterparts.
- Residents in the low socioeconomic neighborhoods in the Albany (SES 1) had almost 50% higher age-adjusted CHF mortality and 190% higher hospitalization rates compared to residents from high socioeconomic areas (SES 5).

## **Cerebrovascular Disease (Stroke)**

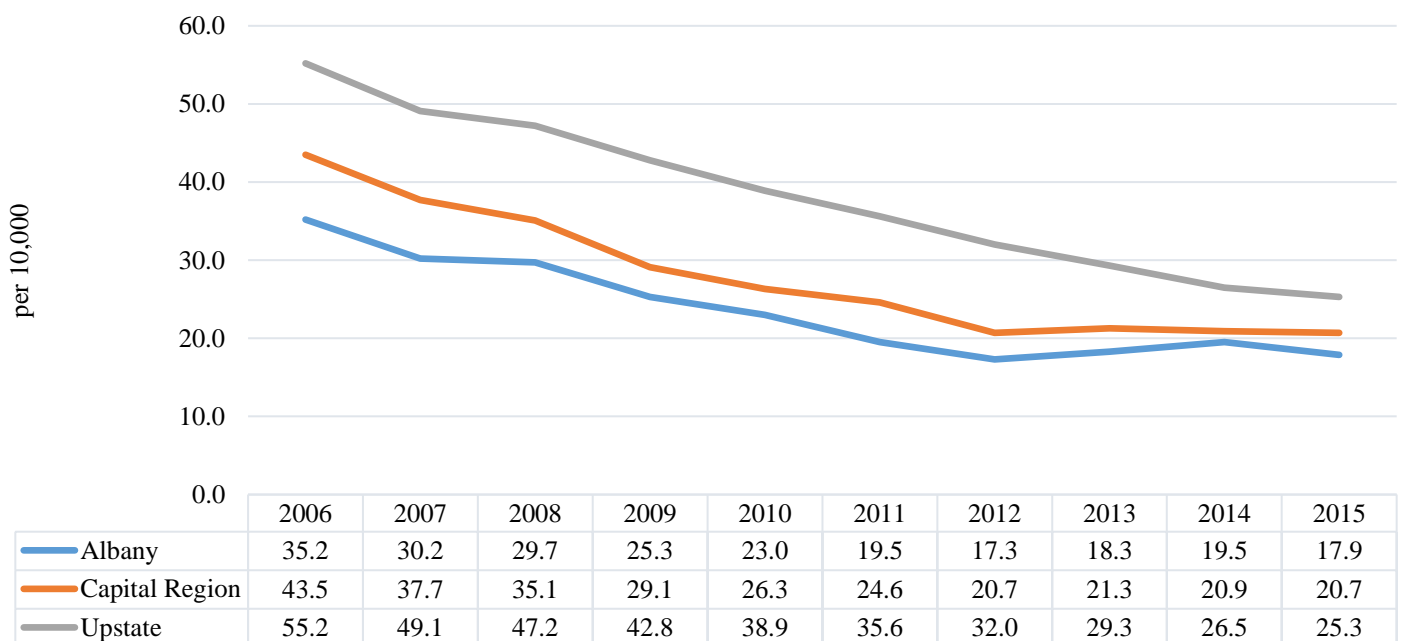
- An average of 105 Albany county residents died from stroke and 690 were hospitalized each year.
- Albany's age-adjusted stroke mortality rate was 6% lower and hospitalization rate 17% lower than Upstate.
- Albany's age-adjusted stroke mortality rate and hospitalization rate trends both showed a 25% decrease over the last decade.
- Albany males had only a 6% age-adjusted stroke mortality rate, and a 17% higher hospitalization rate compared to female residents.
- Age-adjusted stroke mortality and hospitalization rates increased with age.
- Black non-Hispanic residents had a 10% lower age-adjusted stroke mortality rate but almost 70% higher hospitalization rate compared to white non-Hispanic residents. Hispanic residents had a 33% lower hospitalization rates than their white-non-Hispanic counterparts.
- Residents in the low socioeconomic neighborhoods in the Albany (SES 1) had a 77% higher age-adjusted stroke mortality and a 77% higher hospitalization rate compared to residents from high socioeconomic areas (SES 5).

## Coronary Heart Disease

**Age-adjusted Coronary Heart Disease Mortality per 100,000, Albany, Capital Region and NYS excl. NYC, 2006-2015 <sup>14</sup>**



**Age-adjusted Coronary Heart Disease Hospitalizations per 10,000, Albany, Capital Region and NYS excl. NYC, 2006-2015 <sup>14</sup>**



**Age-adjusted Coronary Heart Disease Mortality Rate per 100,000, and Hospitalization Rate per 10,000, Albany County, Capital Region and NYS excl. NYC, 2013-2015**

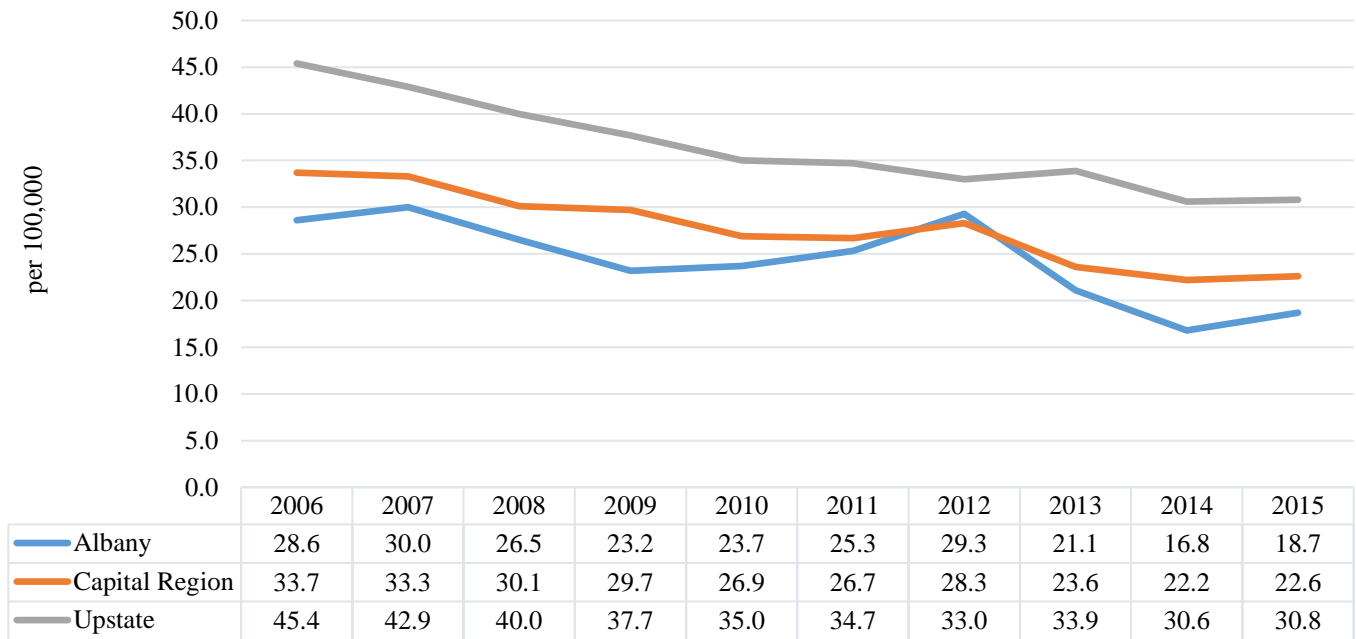
Coronary Heart Disease Mortality	Albany County		Capital Region		Upstate NY
	# (3 yr ave)	Rate	# (3 yr ave)	Rate	Rate
<b>Total</b>	421	103.3	1,410	110.7	120.0
<b>Age</b>					
25-44 years	4	5.1	15	6.6	7.8
45-64 years	62	67.6	198	65.2	69.6
65-74 years	61	244.2	220	264.9	276.0
75+ years	295	1170.9	978	1,271.1	1,390.1
<b>Gender</b>					
Male	209	133.7	729	142.3	154.3
Female	213	80.6	681	85.8	93.3
<b>Race/Ethnicity</b>					
White non-Hispanic	377	103.3	1,315	110.8	120.6
Black non-Hispanic	34	113.5	62	118.8	140.9
Hispanic	4	58.8	14	76.3	81.8
Other	6	72.3	19	89.4	93.1
<b>Socioeconomic Status</b>					
SES 1 (low)	31	154.9	72	156.2	na
SES 2	38	111.4	307	147.6	na
SES 3	212	127.9	362	109.2	na
SES 4	77	82.4	358	101.4	na
SES 5 (high)	88	77.6	291	89.2	na
Coronary Heart Disease Hospitalizations	Albany County		Capital Region		Upstate NY
	# (3 yr ave)	Rate	# (3 yr ave)	Rate	Rate
<b>Total</b>	689	18.6	2,512	20.9	27.0
<b>Age</b>					
25-44 years	29	4.4	115	5.3	5.8
45-64 years	271	30.8	990	33.9	41.6
65-74 years	174	69.1	643	76.2	99.7
75+ years	213	96.6	760	112.3	156.1
<b>Gender</b>					
Male	415	25.2	1,574	28.5	37.3
Female	273	12.9	938	14.3	18.1
<b>Race/Ethnicity</b>					
White non-Hispanic	561	17.6	2,190	20.1	25.0
Black non-Hispanic	74	21.5	138	22.0	28.9
Hispanic	11	10.6	27	10.4	23.0
Other	43	34.3	156	57.1	85.7
<b>Socioeconomic Status</b>					
SES 1 (low)	71	27.9	148	27.9	na
SES 2	80	25.0	488	26.0	na
SES 3	305	21.5	683	22.6	na
SES 4	145	18.0	669	20.4	na
SES 5 (high)	176	17.1	562	17.4	na

s: Data do not meet reporting criteria

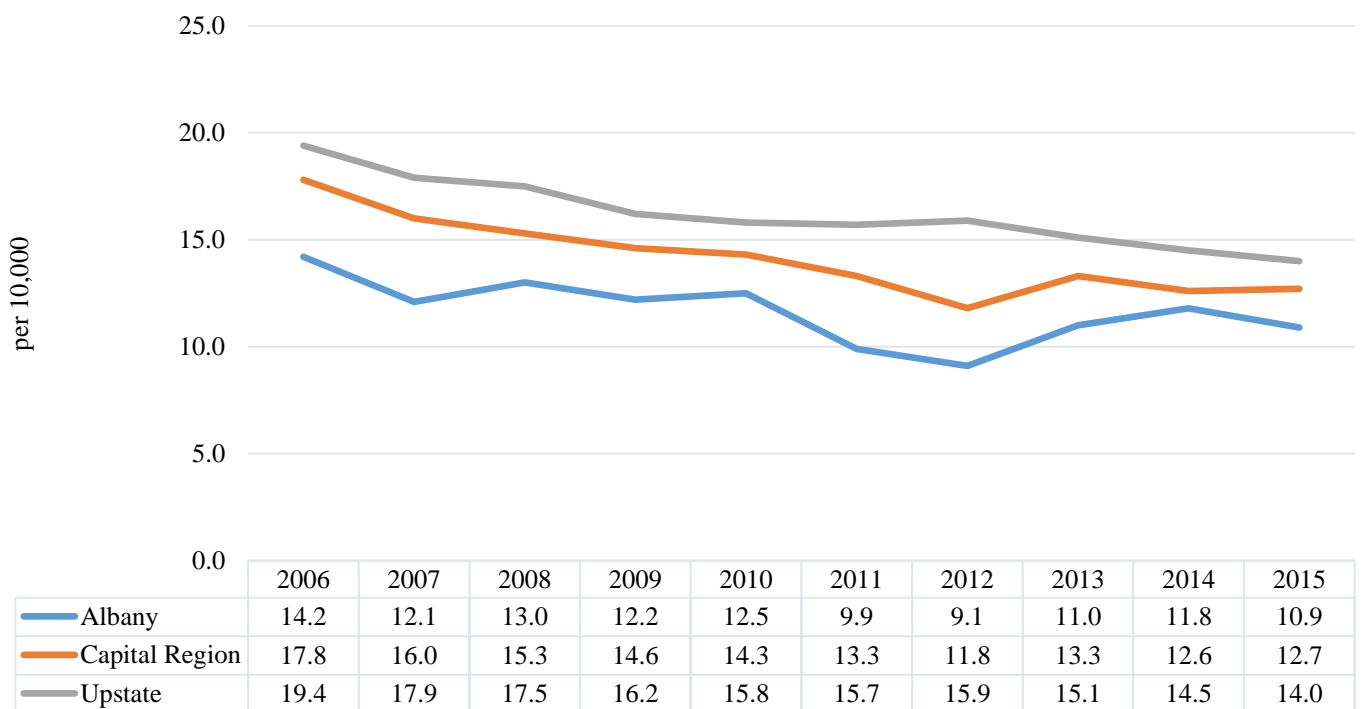
Red: fewer than 10 events in the numerator, therefore rate is unstable

## Heart Attack (Acute Myocardial Infarction)

**Age-adjusted Heart Attack Mortality per 100,000, Albany, Capital Region and NYS excl. NYC, 2006-2015 <sup>14</sup>**



**Age-adjusted Heart Attack Hospitalizations per 10,000, Albany, Capital Region and NYS excl. NYC, 2006-2015 <sup>14</sup>**



**Age-adjusted Heart Attack Mortality Rate per 100,000, and Hospitalization Rate per 10,000, Albany County, Capital Region and NYS excl. NYC, 2013-2015**

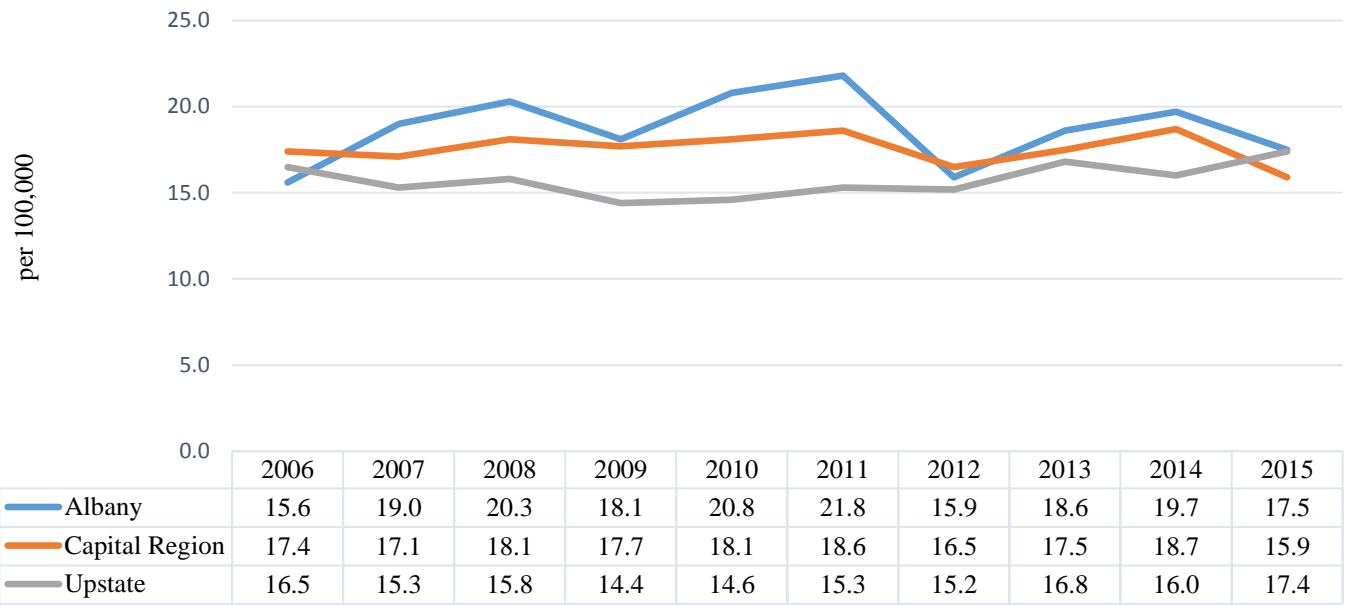
<b>Heart Attack Mortality</b>	<b>Albany County</b>		<b>Capital Region</b>		<b>Upstate NY</b>
	# (3 yr ave)	Rate	# (3 yr ave)	Rate	Rate
<b>Total</b>	77	18.9	285	22.7	31.7
<b>Age</b>					
25-44 years	s	s	3	1.5	2.1
45-64 years	14	16.0	46	15.6	20.2
65-74 years	11	42.9	49	59.8	85.2
75+ years	52	204.3	186	246.5	347.6
<b>Gender</b>					
Male	38	23.5	149	29.0	40.4
Female	40	15.6	135	17.6	24.7
<b>Race/Ethnicity</b>					
White non-Hispanic	66	18.1	263	22.6	32.5
Black non-Hispanic	8	26.2	15	26.8	33.4
Hispanic	s	s	3	19.3	18.5
Other	s	s	3	14.5	22.8
<b>Socioeconomic Status</b>					
SES 1 (low)	4	22.9	11	25.3	na
SES 2	9	26.3	63	31.7	na
SES 3	35	20.7	73	22.2	na
SES 4	19	20.3	76	21.9	na
SES 5 (high)	17	14.7	55	17.1	na
	<b>Albany County</b>		<b>Capital Region</b>		<b>Upstate NY</b>
<b>Heart Attack Hospitalizations</b>	# (3 yr ave)	Rate	# (3 yr ave)	Rate	Rate
<b>Total</b>	416	11.3	1,547	12.9	14.5
<b>Age</b>					
25-44 years	19	2.8	72	3.3	3.4
45-64 years	157	18.2	581	20.0	21.0
65-74 years	96	38.4	369	43.9	48.5
75+ years	143	63.3	523	75.3	93.4
<b>Gender</b>					
Male	243	14.9	933	17.1	19.4
Female	173	8.2	614	9.2	10.3
<b>Race/Ethnicity</b>					
White non-Hispanic	341	10.8	1,354	12.4	13.7
Black non-Hispanic	41	12.2	78	12.5	14.8
Hispanic	6	5.8	17	6.4	11.5
Other	28	22.2	98	36.0	44.3
<b>Socioeconomic Status</b>					
SES 1 (low)	44	18.0	94	18.5	na
SES 2	45	14.2	314	16.7	na
SES 3	191	13.5	424	14.0	na
SES 4	86	10.7	396	12.0	na
SES 5 (high)	109	10.5	347	10.8	na

s: Data do not meet reporting criteria

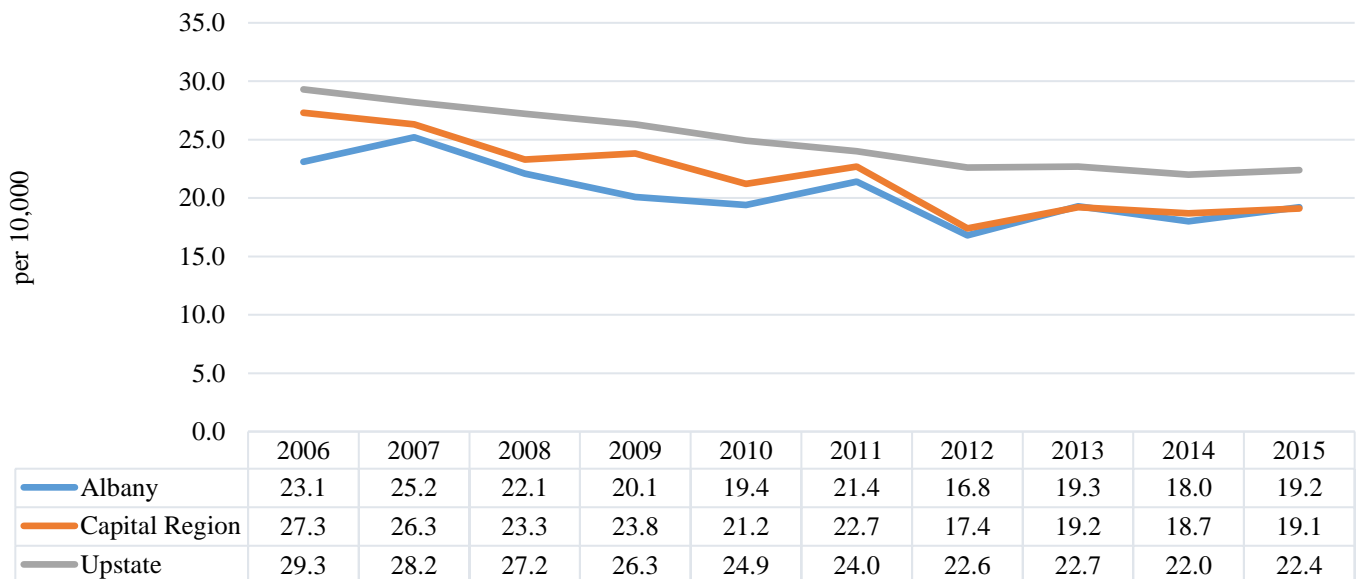
Red: fewer than 10 events in the numerator, therefore rate is unstable

## Congestive Heart Failure

**Age-adjusted Congestive Heart Failure Mortality per 100,000,  
Albany, Capital Region and NYS excl. NYC, 2006-2015 <sup>14</sup>**



**Age-adjusted Congestive Heart Failure Hospitalizations per 10,000,  
Albany, Capital Region and NYS excl. NYC, 2006-2015 <sup>14</sup>**





**Age-adjusted Congestive Heart Failure Mortality Rate per 100,000, and Hospitalization Rate per 10,000, Albany County, Capital Region and NYS excl. NYC, 2013-2015**

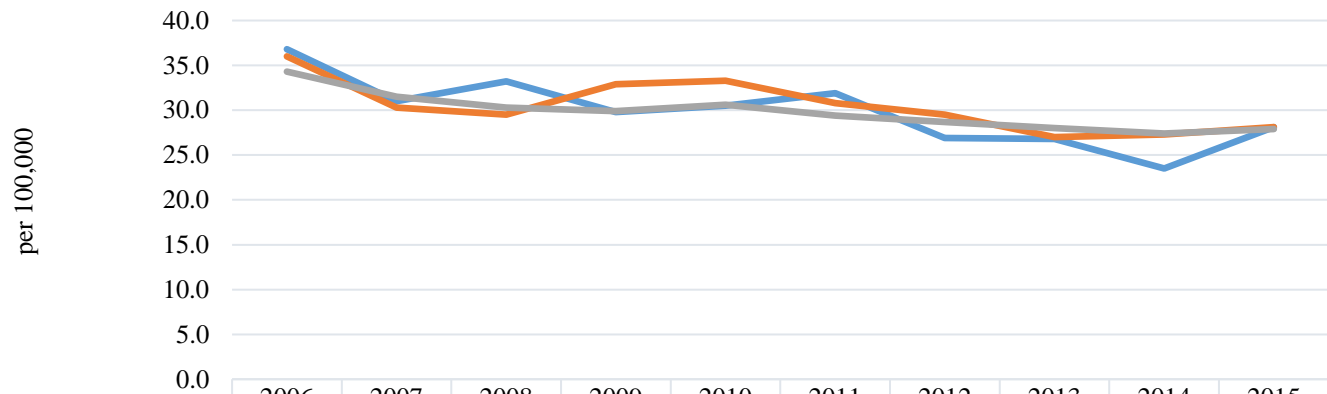
Congestive Heart Failure Mortality	Albany County		Capital Region		Upstate NY
	# (3 yr ave)	Rate	# (3 yr ave)	Rate	Rate
<b>Total</b>	79	18.6	227	17.4	16.7
<b>Age</b>					
25-44 years	s	s	s	s	0.4
45-64 years	2	2.5	7	2.2	3.6
65-74 years	7	30.7	21	27.0	23.2
75+ years	69	260.8	197	246.6	236.0
<b>Gender</b>					
Male	33	22.5	100	20.6	20.0
Female	45	16.3	127	15.4	14.5
<b>Race/Ethnicity</b>					
White non-Hispanic	73	18.7	215	17.5	17.1
Black non-Hispanic	4	14.8	7	13.9	15.2
Hispanic	s	s	3	18.5	9.0
Other	s	s	2	8.9	10.7
<b>Socioeconomic Status</b>					
SES 1 (low)	5	27.8	8	20.1	na
SES 2	3	8.9	39	17.6	na
SES 3	35	19.8	60	17.8	na
SES 4	16	17.8	59	16.5	na
SES 5 (high)	24	19.1	60	17.6	na
Congestive Heart Failure Hospitalizations	Albany County		Capital Region		Upstate NY
	# (3 yr ave)	Rate	# (3 yr ave)	Rate	Rate
<b>Total</b>	722	18.8	2,325	19.0	22.5
<b>Age</b>					
25-44 years	23	3.2	55	2.4	2.7
45-64 years	144	15.7	420	13.8	16.5
65-74 years	131	53.7	458	55.7	65.9
75+ years	423	178.8	1,388	190.9	223.0
<b>Gender</b>					
Male	340	22.0	1,130	22.0	27.1
Female	382	16.4	1,195	16.7	18.6
<b>Race/Ethnicity</b>					
White non-Hispanic	562	16.3	2,006	17.6	19.8
Black non-Hispanic	121	36.5	216	35.1	40.7
Hispanic	11	13.9	37	17.5	24.4
Other	28	27.1	66	30.4	51.3
<b>Socioeconomic Status</b>					
SES 1 (low)	95	41.7	172	35.3	na
SES 2	81	24.9	511	26.1	na
SES 3	337	22.2	674	21.6	na
SES 4	160	18.4	586	17.2	na
SES 5 (high)	160	14.5	494	15.4	na

s: Data do not meet reporting criteria

Red: fewer than 10 events in the numerator, therefore rate is unstable

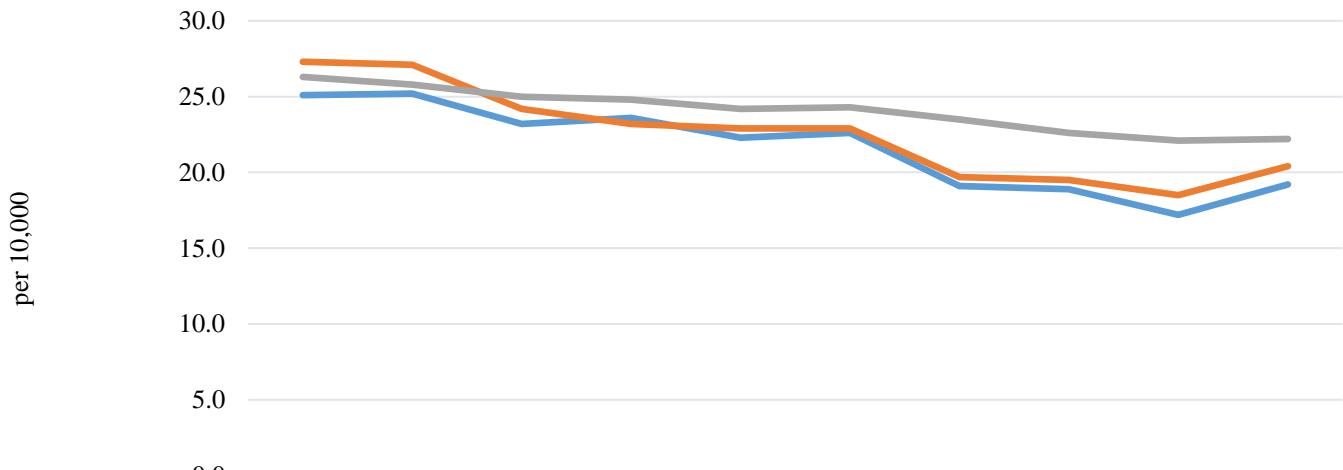
## Cerebrovascular Disease (Stroke)

**Age-adjusted Cerebrovascular (Stroke) Mortality per 100,000,  
Albany, Capital Region and NYS excl. NYC, 2006-2015 <sup>14</sup>**



	2006	2007	2008	2009	2010	2011	2012	2013	2014	2015
Albany	36.8	31.0	33.2	29.8	30.5	31.9	26.9	26.8	23.5	28.1
Capital Region	36.0	30.3	29.5	32.9	33.3	30.8	29.5	27.0	27.3	28.1
Upstate	34.3	31.5	30.3	29.9	30.6	29.4	28.7	28.0	27.4	27.9

**Age-adjusted Cerebrovascular (Stroke) Hospitalizations per 10,000,  
Albany, Capital Region and NYS excl. NYC, 2006-2015 <sup>14</sup>**



	2006	2007	2008	2009	2010	2011	2012	2013	2014	2015
Albany	25.1	25.2	23.2	23.6	22.3	22.6	19.1	18.9	17.2	19.2
Capital Region	27.3	27.1	24.2	23.2	22.9	22.9	19.7	19.5	18.5	20.4
Upstate	26.3	25.8	25.0	24.8	24.2	24.3	23.5	22.6	22.1	22.2

**Age-adjusted Cerebrovascular Mortality Rate per 100,000, and Hospitalization Rate per 10,000, Albany County, Capital Region and NYS excl. NYC, 2013-2015**

<b>Cerebrovascular Mortality</b>	<b>Albany County</b>		<b>Capital Region</b>		<b>Upstate NY</b>
	# (3 yr ave)	Rate	# (3 yr ave)	Rate	Rate
<b>Total</b>	104	26.1	345	27.5	27.8
<b>Age</b>					
25-44 years	s	s	4	2.0	2.0
45-64 years	12	13.5	34	11.1	11.2
65-74 years	17	72.2	49	61.1	57.8
75+ years	73	289.0	256	335.6	344.4
<b>Gender</b>					
Male	41	26.6	136	27.5	28.0
Female	63	25.1	209	27.0	27.1
<b>Race/Ethnicity</b>					
White non-Hispanic	93	25.8	321	27.3	27.5
Black non-Hispanic	7	23.4	15	26.2	33.1
Hispanic	s	s	4	22.9	21.2
Other	3	27.3	5	26.1	25.5
<b>Socioeconomic Status</b>					
SES 1 (low)	7	37.1	15	32.8	na
SES 2	12	35.1	63	30.3	na
SES 3	48	30.7	91	28.4	na
SES 4	19	21.0	94	27.1	na
SES 5 (high)	23	21.0	79	24.2	na
<b>Cerebrovascular Hospitalizations</b>	<b>Albany County</b>		<b>Capital Region</b>		<b>Upstate NY</b>
	# (3 yr ave)	Rate	# (3 yr ave)	Rate	Rate
<b>Total</b>	687	18.4	2,344	19.4	22.3
<b>Age</b>					
25-44 years	27	3.8	79	3.5	4.7
45-64 years	184	20.6	622	21.0	23.7
65-74 years	161	65.0	551	66.1	75.7
75+ years	312	136.7	1,082	152.6	173.2
<b>Gender</b>					
Male	315	20.0	1,137	21.6	24.4
Female	372	17.1	1,208	17.6	20.4
<b>Race/Ethnicity</b>					
White non-Hispanic	544	16.7	2,023	18.2	20.1
Black non-Hispanic	90	27.9	171	28.7	35.0
Hispanic	11	11.2	30	12.0	22.5
Other	43	36.9	120	48.2	55.8
<b>Socioeconomic Status</b>					
SES 1 (low)	66	28.5	146	29.4	na
SES 2	82	26.2	454	23.8	na
SES 3	302	20.9	635	20.7	na
SES 4	160	18.8	628	18.8	na
SES 5 (high)	170	16.1	555	17.4	na

s: Data do not meet reporting criteria

Red: fewer than 10 events in the numerator, therefore rate is unstable

## Data Summary:

### Coronary Heart Disease (CHD)

- About 135 Columbia county residents died from CHD and 190 were hospitalized each year.
- The Columbia's age-adjusted CHD mortality was 12% higher and hospitalization rate was 25% lower than Upstate, and decreased 30% and 60% respectively over the last decade.
- Columbia males had 60% higher age-adjusted CHD mortality and 70% higher hospitalization rates compared to female residents.
- Age-adjusted CHD mortality and hospitalization rates increased with age.
- Black non-Hispanic residents had almost a 20% higher age-adjusted CHD mortality rates and 30% higher hospitalization rates compared to white non-Hispanic residents.
- Columbia had no neighborhoods in SES 1 (low). Mortality rates were actually highest in Columbia's SES 5 neighborhoods (high). Columbia's low socioeconomic area (SES 2) did have 50% higher age-adjusted CHD hospitalization rates compared to residents from high socioeconomic areas (SES 5).

### Heart Attack (acute myocardial infarction)

- An average of 25 Columbia county residents died from heart attack and 120 were hospitalized each year.
- Columbia's age-adjusted heart attack mortality and hospitalization rates were lower than Upstate and decreased about 30% and 20% respectively over the last decade.
- Columbia males had 60% higher age-adjusted heart attack mortality and 55% higher hospitalization rates compared to female residents.
- Age-adjusted heart attack mortality and hospitalization rates increased with age.
- Black non-Hispanic residents had a 12% higher age-adjusted heart attack hospitalization rate compared to white non-Hispanic residents.
- Mortality rates were actually highest in Columbia's SES 5 neighborhoods. Columbia's low socioeconomic area (SES 2) did have 50% higher age-adjusted CHD hospitalization rates compared to residents from high socioeconomic areas (SES 5).

## **Congestive Health Failure (CHF)**

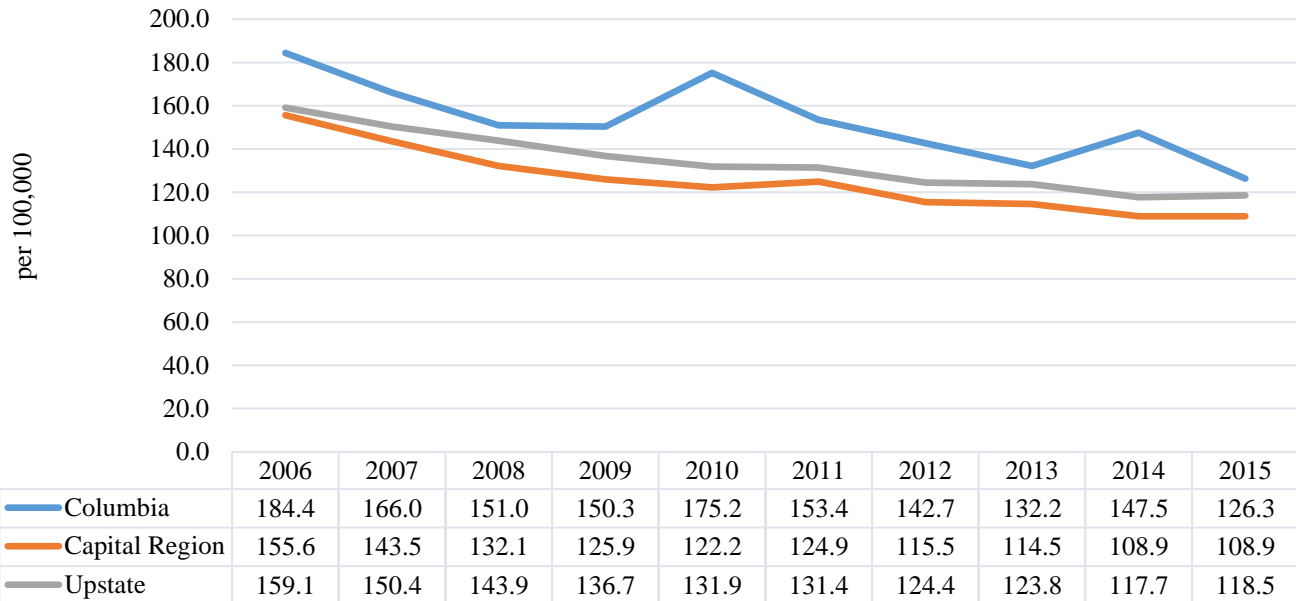
- An average of 15 Columbia county residents died from CHF and 200 were hospitalized each year.
- Columbia's age-adjusted CHF mortality was 18% lower, and hospitalization rates were 7% lower than Upstate.
- Columbia's age-adjusted CHF mortality increased over 60%, while hospitalization trends decreased almost 20% over the last decade.
- Columbia males had an over 80% higher age-adjusted CHF mortality rate and almost a 20% higher hospitalization rate compared to female residents.
- Age-adjusted CHF mortality and hospitalization rates increased with age.
- Black non-Hispanic residents had a 125% higher hospitalization rate compared to white non-Hispanic residents. Hispanic residents had 15% lower hospitalization rates than their white-non-Hispanic counterparts.
- Mortality rates were actually highest in Columbia's SES 4 and SES 5 neighborhoods. Columbia's low socioeconomic area (SES 2) did have an 8% higher age-adjusted CHF hospitalization rates compared to residents from high socioeconomic areas (SES 5).

## **Cerebrovascular Disease (Stroke)**

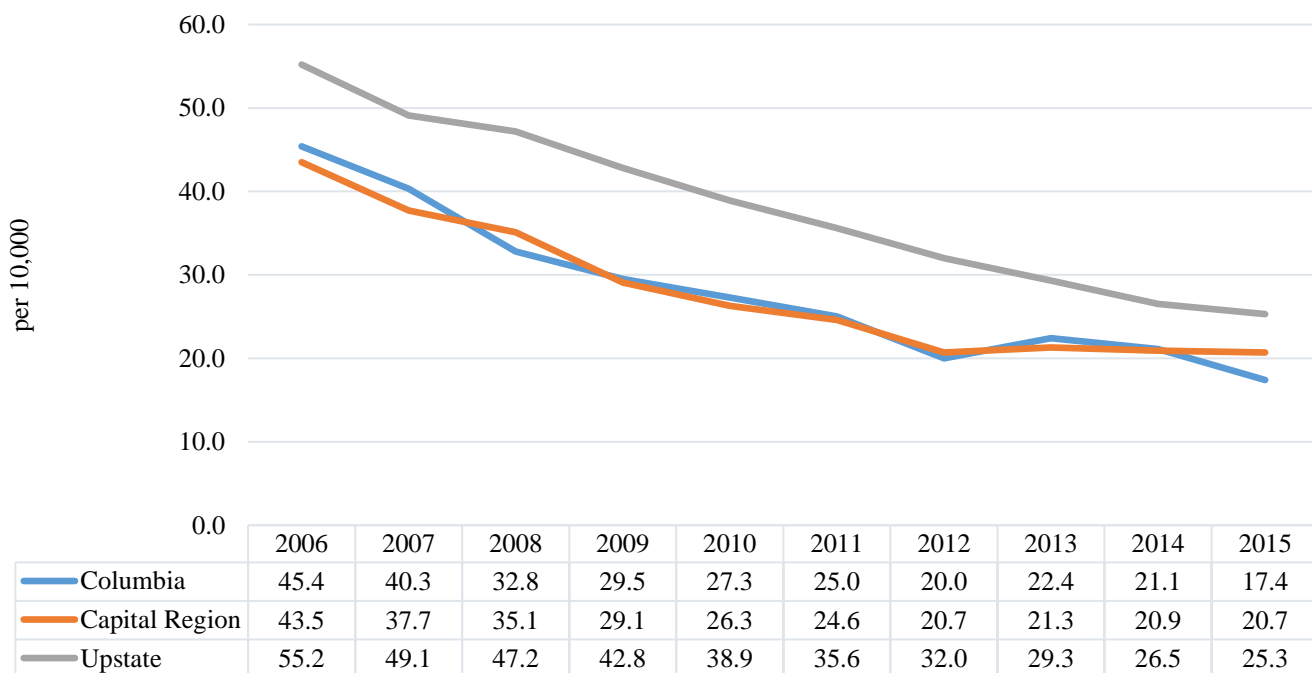
- An average of 30 Columbia county residents died from stroke and 175 were hospitalized each year.
- Columbia's age-adjusted stroke mortality rate was 13% higher and hospitalization rate 20% lower than Upstate.
- Columbia's age-adjusted stroke mortality rate and hospitalization rate trends showed a 30% and 20% decrease respectively over the last decade.
- Columbia females actually had 5% higher age-adjusted stroke mortality rate than their male counterparts. However, males had a 25% higher hospitalization rate compared to female residents.
- Age-adjusted stroke mortality and hospitalization rates increased with age.
- Black non-Hispanic residents had a 60% higher hospitalization rate compared to white non-Hispanic residents. Hispanic residents had 50% lower hospitalization rates than their white-non-Hispanic counterparts.
- The stroke mortality and hospitalization rates were similar across all of Columbia's SES neighborhoods.

## Coronary Heart Disease (CHD)

**Age-adjusted Coronary Heart Disease Mortality per 100,000, Columbia, Capital Region and NYS excl. NYC, 2006-2015 <sup>14</sup>**



**Age-adjusted Coronary Heart Disease Hospitalizations per 10,000, Columbia, Capital Region and NYS excl. NYC, 2006-2015 <sup>14</sup>**



**Age-adjusted Coronary Heart Disease Mortality Rate per 100,000, and Hospitalization Rate per 10,000, Columbia County, Capital Region and NYS excl. NYC, 2013-2015**

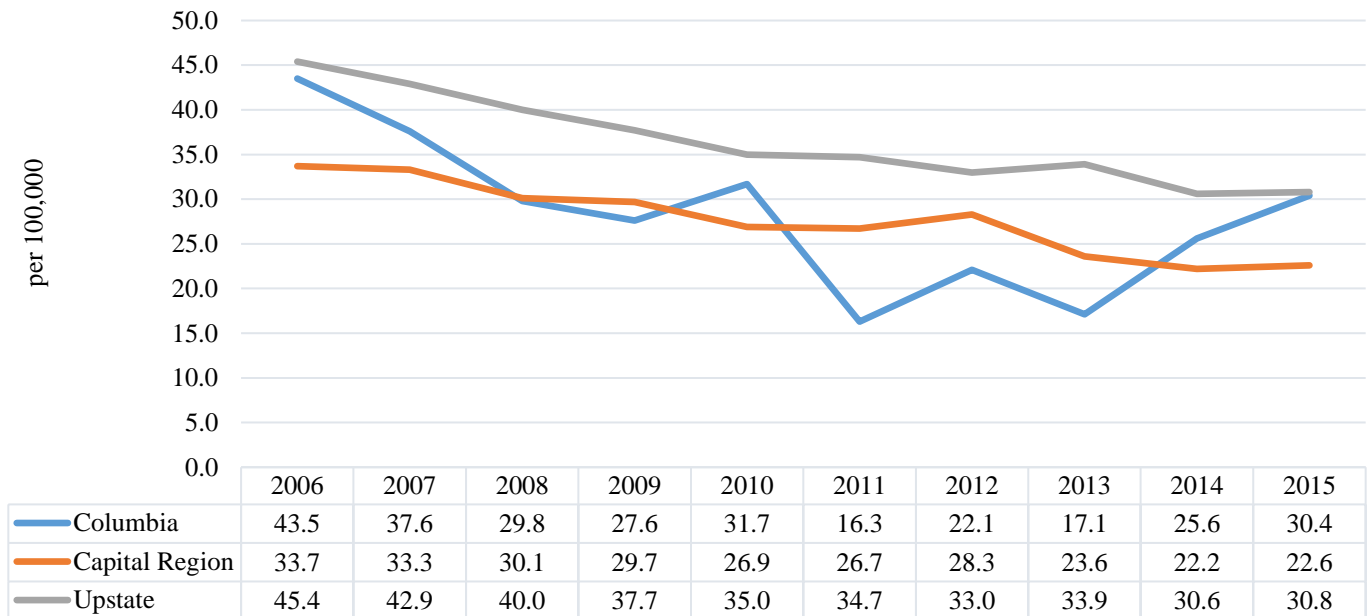
Coronary Heart Disease Mortality	Columbia County		Capital Region		Upstate NY
	# (3 yr ave)	Rate	# (3 yr ave)	Rate	Rate
<b>Total</b>	134	134.8	1,410	110.7	120.0
<b>Age</b>					
25-44 years	s	s	15	6.6	7.8
45-64 years	17	77.2	198	65.2	69.6
65-74 years	20	279.5	220	264.9	276.0
75+ years	97	1615.7	978	1,271.1	1,390.1
<b>Gender</b>					
Male	73	168.6	729	142.3	154.3
Female	62	106.5	681	85.8	93.3
<b>Race/Ethnicity</b>					
White non-Hispanic	129	135.4	1,315	110.8	120.6
Black non-Hispanic	4	160.1	62	118.8	140.9
Hispanic	s	s	14	76.3	81.8
Other	s	s	19	89.4	93.1
<b>Socioeconomic Status</b>					
SES 1 (low)	na	na	72	156.2	na
SES 2	46	148.2	307	147.6	na
SES 3	15	93.8	362	109.2	na
SES 4	26	113.6	358	101.4	na
SES 5 (high)	42	163.8	291	89.2	na
Coronary Heart Disease Hospitalizations	Columbia County		Capital Region		Upstate NY
	# (3 yr ave)	Rate	# (3 yr ave)	Rate	Rate
<b>Total</b>	191	20.3	2,512	20.9	27.0
<b>Age</b>					
25-44 years	10	7.1	115	5.3	5.8
45-64 years	76	34.0	990	33.9	41.6
65-74 years	47	63.1	643	76.2	99.7
75+ years	59	107.2	760	112.3	156.1
<b>Gender</b>					
Male	118	25.8	1,574	28.5	37.3
Female	73	15.1	938	14.3	18.1
<b>Race/Ethnicity</b>					
White non-Hispanic	171	19.5	2,190	20.1	25.0
Black non-Hispanic	7	25.1	138	22.0	28.9
Hispanic	2	8.8	27	10.4	23.0
Other	11	89.4	156	57.1	85.7
<b>Socioeconomic Status</b>					
SES 1 (low)	na	na	148	27.9	na
SES 2	78	26.7	488	26.0	na
SES 3	34	19.7	683	22.6	na
SES 4	40	18.4	669	20.4	na
SES 5 (high)	43	18.1	562	17.4	na

s: Data do not meet reporting criteria

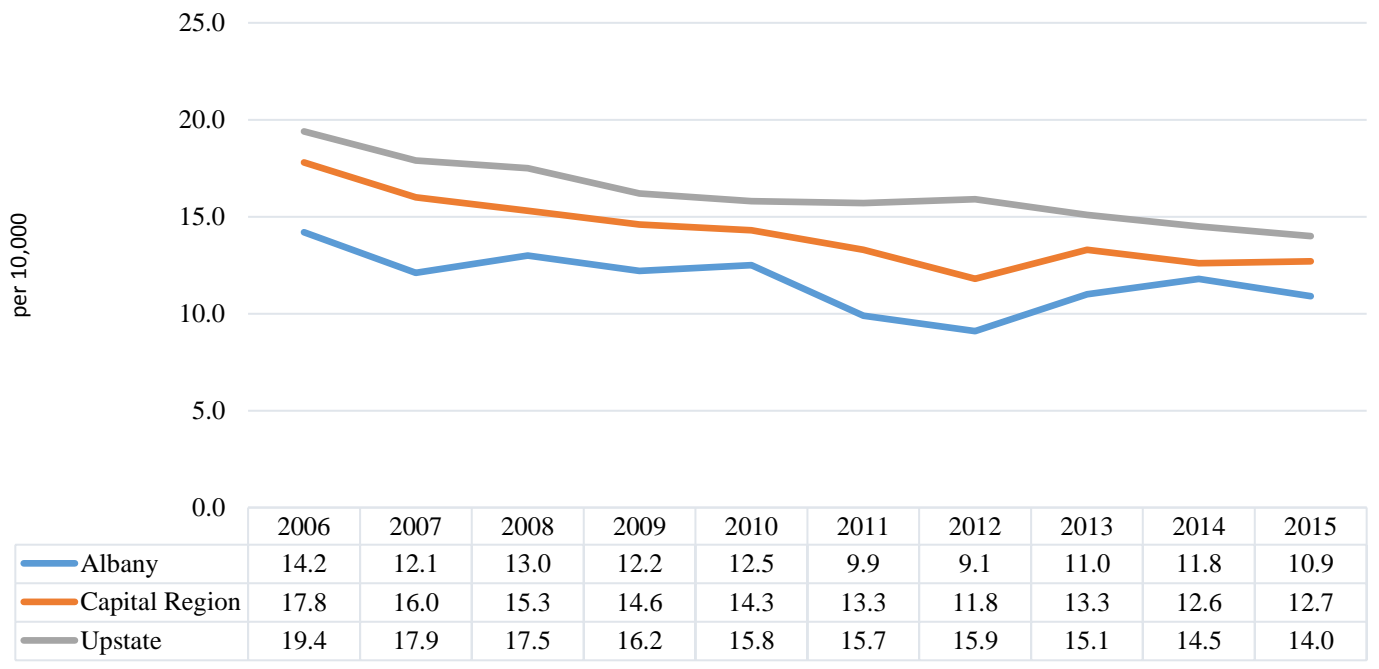
Red: fewer than 10 events in the numerator, therefore rate is unstable

## Heart Disease (Acute Myocardial Infarction)

**Age-adjusted Heart Attack Mortality per 100,000, Columbia, Capital Region and NYS excl. NYC, 2006-2015<sup>14</sup>**



**Age-adjusted Heart Attack Hospitalizations per 10,000, Albany, Capital Region and NYS excl. NYC, 2006-2015<sup>14</sup>**





**Age-adjusted Heart Attack Mortality Rate per 100,000, and Hospitalization Rate per 10,000, Columbia County, Capital Region and NYS excl. NYC, 2013-2015**

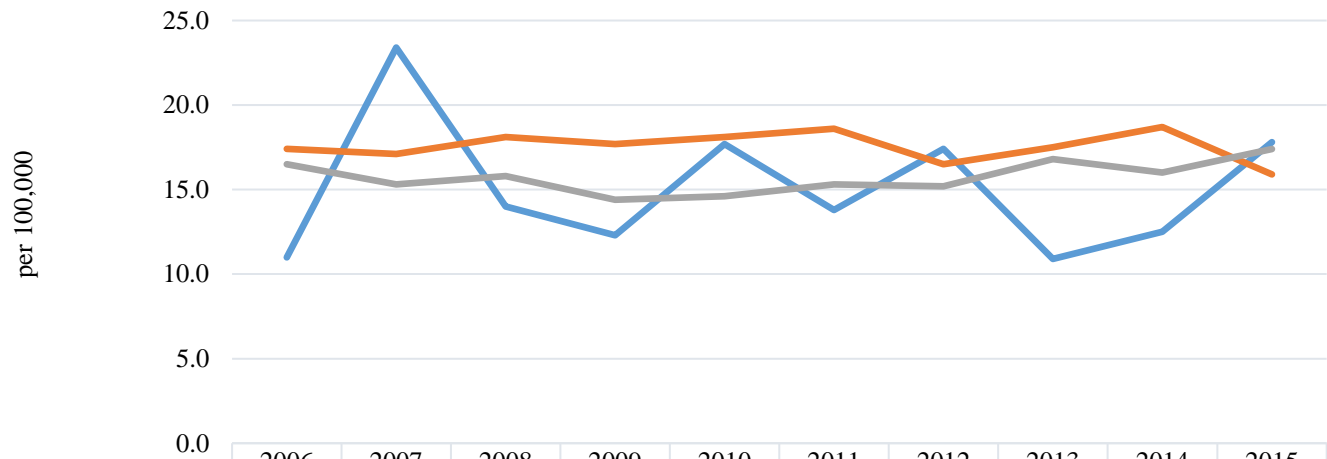
Heart Attack Mortality	Columbia County		Capital Region		Upstate NY
	# (3 yr ave)	Rate	# (3 yr ave)	Rate	Rate
<b>Total</b>	24	24.2	285	22.7	31.7
<b>Age</b>					
25-44 years	0	0.0	3	1.5	2.1
45-64 years	5	22.7	46	15.6	20.2
65-74 years	5	78.2	49	59.8	85.2
75+ years	14	232.6	186	246.5	347.6
<b>Gender</b>					
Male	14	30.1	149	29.0	40.4
Female	10	19.0	135	17.6	24.7
<b>Race/Ethnicity</b>					
White non-Hispanic	23	24.6	263	22.6	32.5
Black non-Hispanic	s	s	15	26.8	33.4
Hispanic	s	s	3	19.3	18.5
Other	s	s	3	14.5	22.8
<b>Socioeconomic Status</b>					
SES 1 (low)	na	na	11	25.3	na
SES 2	7	23.9	63	31.7	na
SES 3	4	26.2	73	22.2	na
SES 4	5	18.9	76	21.9	na
SES 5 (high)	7	29.6	55	17.1	na
Heart Attack Hospitalizations	Columbia County		Capital Region		Upstate NY
	# (3 yr ave)	Rate	# (3 yr ave)	Rate	Rate
<b>Total</b>	120	12.8	1,547	12.9	14.5
<b>Age</b>					
25-44 years	5	3.8	72	3.3	3.4
45-64 years	48	21.9	581	20.0	21.0
65-74 years	28	38.3	369	43.9	48.5
75+ years	40	70.8	523	75.3	93.4
<b>Gender</b>					
Male	71	15.7	933	17.1	19.4
Female	49	10.1	614	9.2	10.3
<b>Race/Ethnicity</b>					
White non-Hispanic	107	12.1	263	22.6	32.5
Black non-Hispanic	4	13.5	15	26.8	33.4
Hispanic	s	s	3	19.3	18.5
Other	9	6.5	3	14.5	22.8
<b>Socioeconomic Status</b>					
SES 1 (low)	na	na	94	18.5	na
SES 2	49	16.7	314	16.7	na
SES 3	23	13.3	424	14.0	na
SES 4	24	11.6	396	12.0	na
SES 5 (high)	27	11.2	347	10.8	na

s: Data do not meet reporting criteria

Red: fewer than 10 events in the numerator, therefore rate is unstable

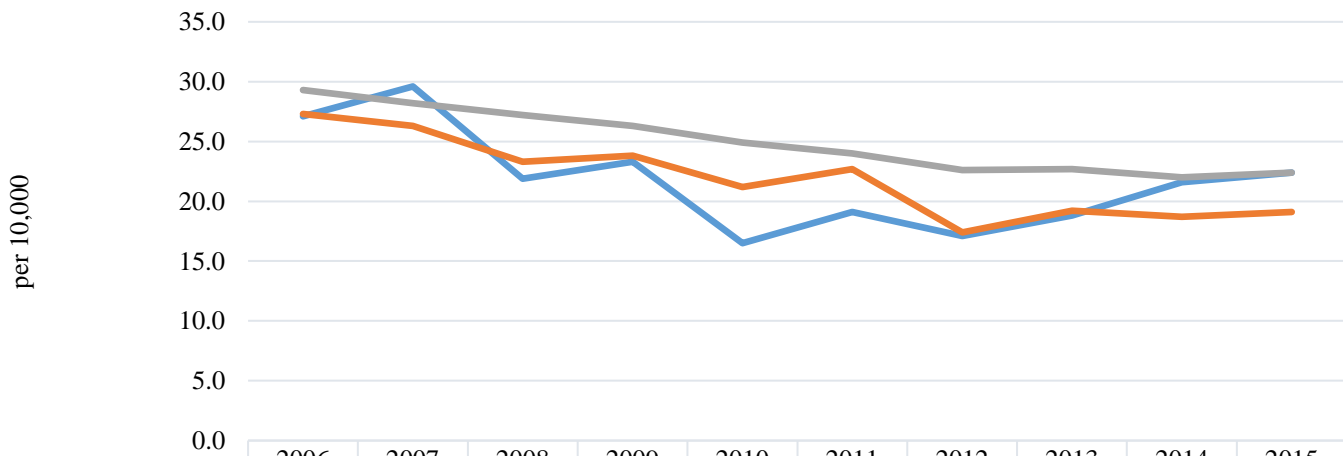
## Congestive Heart Failure

**Age-adjusted Congestive Heart Failure Mortality per 100,000, Columbia, Capital Region and NYS excl. NYC, 2006-2015 <sup>14</sup>**



	2006	2007	2008	2009	2010	2011	2012	2013	2014	2015
— Columbia	11.0	23.4	14.0	12.3	17.7	13.8	17.4	10.9	12.5	17.8
— Capital Region	17.4	17.1	18.1	17.7	18.1	18.6	16.5	17.5	18.7	15.9
— Upstate	16.5	15.3	15.8	14.4	14.6	15.3	15.2	16.8	16.0	17.4

**Age-adjusted Congestive Heart Failure Hospitalizations per 10,000, Columbia, Capital Region and NYS excl. NYC, 2006-2015 <sup>14</sup>**



	2006	2007	2008	2009	2010	2011	2012	2013	2014	2015
— Columbia	27.1	29.6	21.9	23.3	16.5	19.1	17.1	18.8	21.6	22.4
— Capital Region	27.3	26.3	23.3	23.8	21.2	22.7	17.4	19.2	18.7	19.1
— Upstate	29.3	28.2	27.2	26.3	24.9	24.0	22.6	22.7	22.0	22.4

**Age-adjusted Congestive Heart Failure Mortality Rate per 100,000, and Hospitalization Rate per 10,000, Columbia County, Capital Region and NYS excl. NYC, 2013-2015**

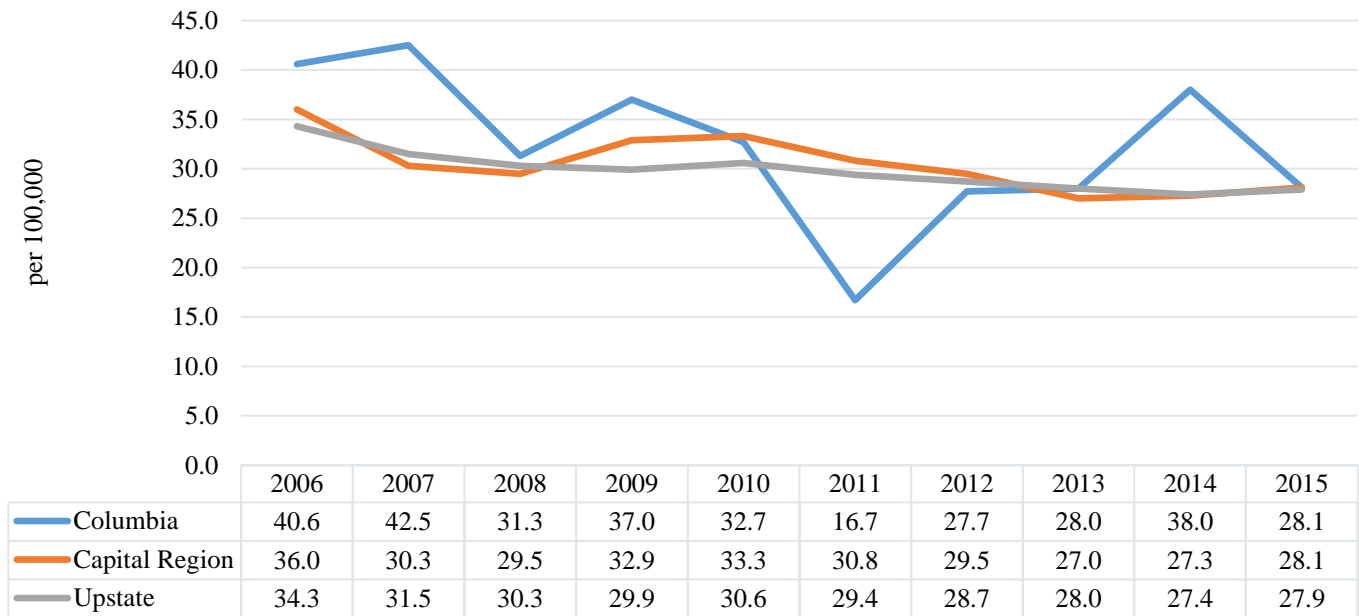
Congestive Heart Failure Mortality	Columbia County		Capital Region		Upstate NY
	# (3 yr ave)	Rate	# (3 yr ave)	Rate	Rate
<b>Total</b>	14	13.7	227	17.4	16.7
<b>Age</b>					
25-44 years	0	0.0	s	s	0.4
45-64 years	s	s	7	2.2	3.6
65-74 years	2	27.9	21	27.0	23.2
75+ years	11	187.5	197	246.6	236.0
<b>Gender</b>					
Male	8	18.7	100	20.6	20.0
Female	6	10.3	127	15.4	14.5
<b>Race/Ethnicity</b>					
White non-Hispanic	13	13.3	215	17.5	17.1
Black non-Hispanic	0	0.0	7	13.9	15.2
Hispanic	s	s	3	18.5	9.0
Other	0	0.0	2	8.9	10.7
<b>Socioeconomic Status</b>					
SES 1 (low)	na	na	8	20.1	na
SES 2	4	13.0	39	17.6	na
SES 3	2	10.0	60	17.8	na
SES 4	3	14.9	59	16.5	na
SES 5 (high)	4	14.4	60	17.6	na
Congestive Heart Failure Hospitalizations	Columbia County		Capital Region		Upstate NY
	# (3 yr ave)	Rate	# (3 yr ave)	Rate	Rate
<b>Total</b>	204	20.9	2,325	19.0	22.5
<b>Age</b>					
25-44 years	2	1.8	55	2.4	2.7
45-64 years	39	17.4	420	13.8	16.5
65-74 years	40	54.9	458	55.7	65.9
75+ years	122	213.3	1,388	190.9	223.0
<b>Gender</b>					
Male	99	22.9	1,130	22.0	27.1
Female	105	19.3	1,195	16.7	18.6
<b>Race/Ethnicity</b>					
White non-Hispanic	181	16.2	2,006	17.6	19.8
Black non-Hispanic	14	36.5	216	35.1	40.7
Hispanic	4	13.9	37	17.5	24.4
Other	5	27.1	66	30.4	51.3
<b>Socioeconomic Status</b>					
SES 1 (low)	na	na	172	35.3	na
SES 2	79	25.7	511	26.1	na
SES 3	35	23.9	674	21.6	na
SES 4	39	17.3	586	17.2	na
SES 5 (high)	56	23.8	494	15.4	na

s: Data do not meet reporting criteria

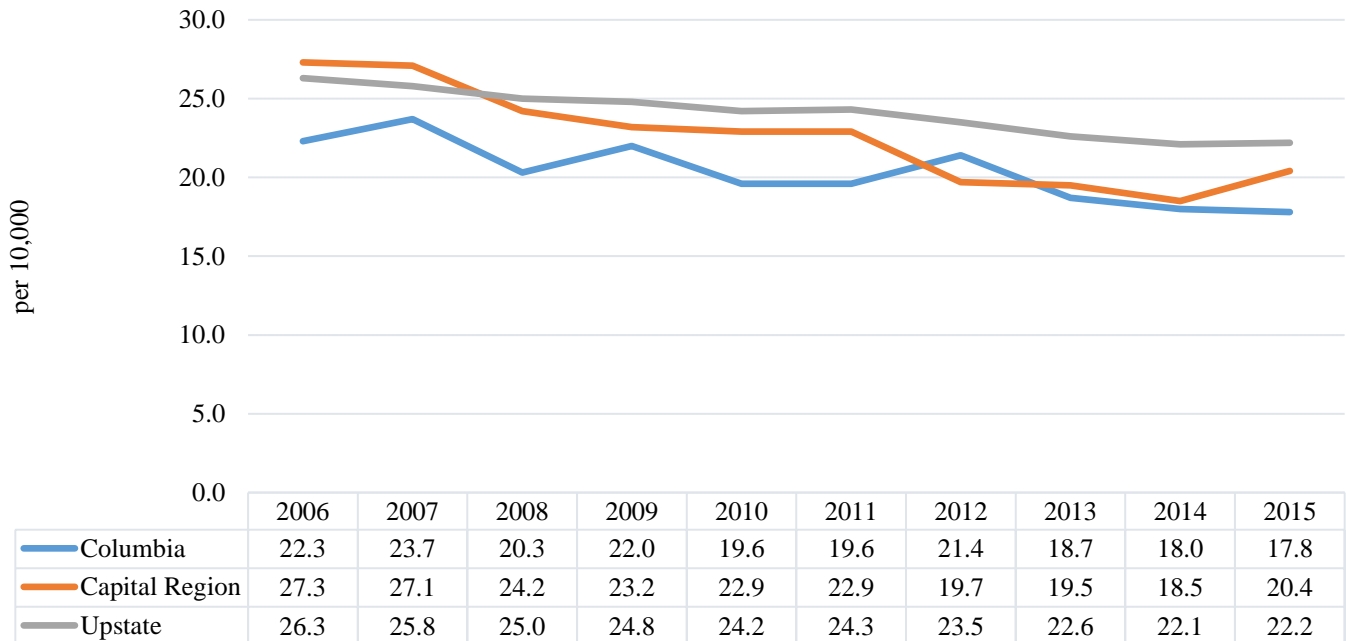
Red: fewer than 10 events in the numerator, therefore rate is unstable

## Cerebrovascular Disease (Stroke)

**Age-adjusted Cerebrovascular (Stroke) Mortality per 100,000, Columbia, Capital Region and NYS excl. NYC, 2006-2015 <sup>14</sup>**



**Age-adjusted Cerebrovascular (Stroke) Hospitalizations per 10,000, Columbia, Capital Region and NYS excl. NYC, 2006-2015 <sup>14</sup>**



**Age-adjusted Cerebrovascular Mortality Rate per 100,000, and Hospitalization Rate per 10,000, Columbia County, Capital Region and NYS excl. NYC, 2013-2015**

	Columbia County		Capital Region		Upstate NY
<b>Cerebrovascular Mortality</b>	# (3 yr ave)	Rate	# (3 yr ave)	Rate	Rate
<b>Total</b>	31	31.3	345	27.5	27.8
<b>Age</b>					
25-44 years	s	s	4	2.0	2.0
45-64 years	3	12.1	34	11.1	11.2
65-74 years	4	58.3	49	61.1	57.8
75+ years	23	394.7	256	335.6	344.4
<b>Gender</b>					
Male	13	30.8	136	27.5	28.0
Female	18	32.3	209	27.0	27.1
<b>Race/Ethnicity</b>					
White non-Hispanic	29	30.9	321	27.3	27.5
Black non-Hispanic	s	s	15	26.2	33.1
Hispanic	s	s	4	22.9	21.2
Other	s	s	5	26.1	25.5
<b>Socioeconomic Status</b>					
SES 1 (low)	na	na	15	32.8	na
SES 2	11	34.8	63	30.3	na
SES 3	4	23.2	91	28.4	na
SES 4	6	27.9	94	27.1	na
SES 5 (high)	9	34.5	79	24.2	na
	Columbia County		Capital Region		Upstate NY
<b>Cerebrovascular Hospitalizations</b>	# (3 yr ave)	Rate	# (3 yr ave)	Rate	Rate
<b>Total</b>	174	18.1	2,344	19.4	22.3
<b>Age</b>					
25-44 years	3	2.3	79	3.5	4.7
45-64 years	48	22.0	622	21.0	23.7
65-74 years	41	55.0	551	66.1	75.7
75+ years	82	145.9	1,082	152.6	173.2
<b>Gender</b>					
Male	92	20.2	1,137	21.6	24.4
Female	82	16.2	1,208	17.6	20.4
<b>Race/Ethnicity</b>					
White non-Hispanic	158	17.4	2,023	18.2	20.1
Black non-Hispanic	9	27.7	171	28.7	35.0
Hispanic	2	9.0	30	12.0	22.5
Other	5	52.7	120	48.2	55.8
<b>Socioeconomic Status</b>					
SES 1 (low)	na	na	146	29.4	na
SES 2	56	19.1	454	23.8	na
SES 3	31	20.1	635	20.7	na
SES 4	44	18.8	628	18.8	na
SES 5 (high)	45	18.6	555	17.4	na

s: Data do not meet reporting criteria

Red: fewer than 10 events in the numerator, therefore rate is unstable

### *Data Summary:*

#### **Coronary Heart Disease (CHD)**

- About 90 Greene county residents died from CHD and 170 were hospitalized each year.
- The Greene's age-adjusted CHD mortality was 5% higher and hospitalization rates were 10% lower than Upstate, and decreased 35% and 50% respectively over the last decade
- Greene males had over 30% higher age-adjusted CHD mortality, and almost 90% higher hospitalization rates compared to female residents.
- Age-adjusted CHD mortality and hospitalization rates increased with age.
- Black non-Hispanic residents had 50% higher age-adjusted CHD hospitalization rates compared to white non-Hispanic residents.
- There were no socioeconomic trend in age-adjusted CHD mortality or hospitalization rates across Greene neighborhoods.

#### **Heart Attack (acute myocardial infarction)**

- An average of 25 Greene county residents died from heart attack and 105 were hospitalized each year.
- Greene's age-adjusted heart attack mortality rate was similar, and hospitalization rate slightly higher than Upstate and decreased about 45% and 35% respectively over the last decade.
- Greene males had almost 80% higher age-adjusted heart attack mortality, and hospitalization rate compared to female residents.
- Age-adjusted heart attack mortality and hospitalization rates increased with age.
- Black non-Hispanic residents had 60% higher age-adjusted heart attack hospitalization rates compared to white non-Hispanic residents.
- In general, the lower the Greene County SES neighborhood, the higher the age-adjusted heart attack mortality and hospitalization rate.

## **Congestive Health Failure (CHF)**

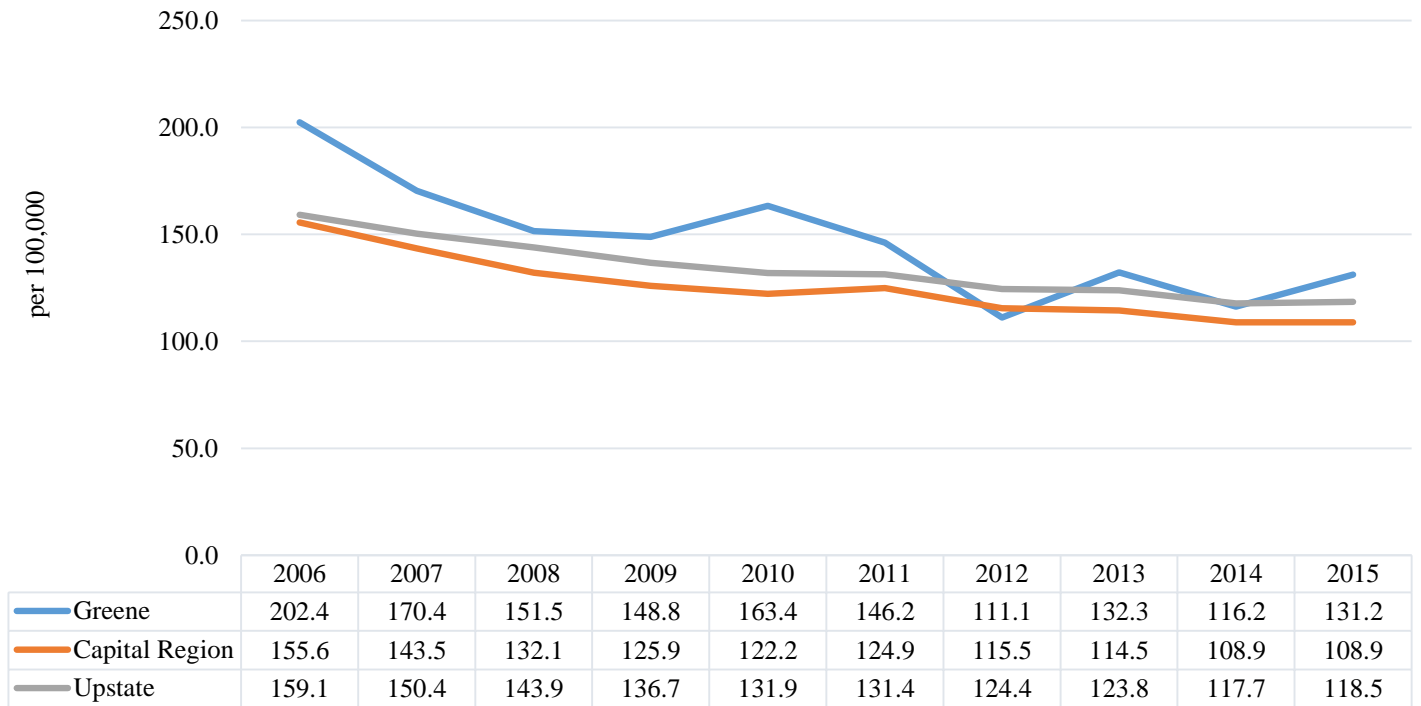
- An average of 12 Greene county residents died from CHF and 160 were hospitalized each year.
- Greene's age-adjusted CHF mortality and hospitalization rates were slightly higher than Upstate.
- Greene's age-adjusted CHF mortality and hospitalization trends both decreased 7% over the last decade.
- Greene females actually had a 20% higher age-adjusted CHF mortality rate than their male counterparts. However, males had a 6% higher hospitalization rate compared to female residents.
- Age-adjusted CHF mortality and hospitalization rates increased with age.
- Black non-Hispanic residents had a 70% lower age-adjusted CHF mortality rate hospitalization rate compared to white non-Hispanic residents.
- There were no socioeconomic trend in age-adjusted CHF mortality or hospitalization rates across Greene neighborhoods.

## **Cerebrovascular Disease (Stroke)**

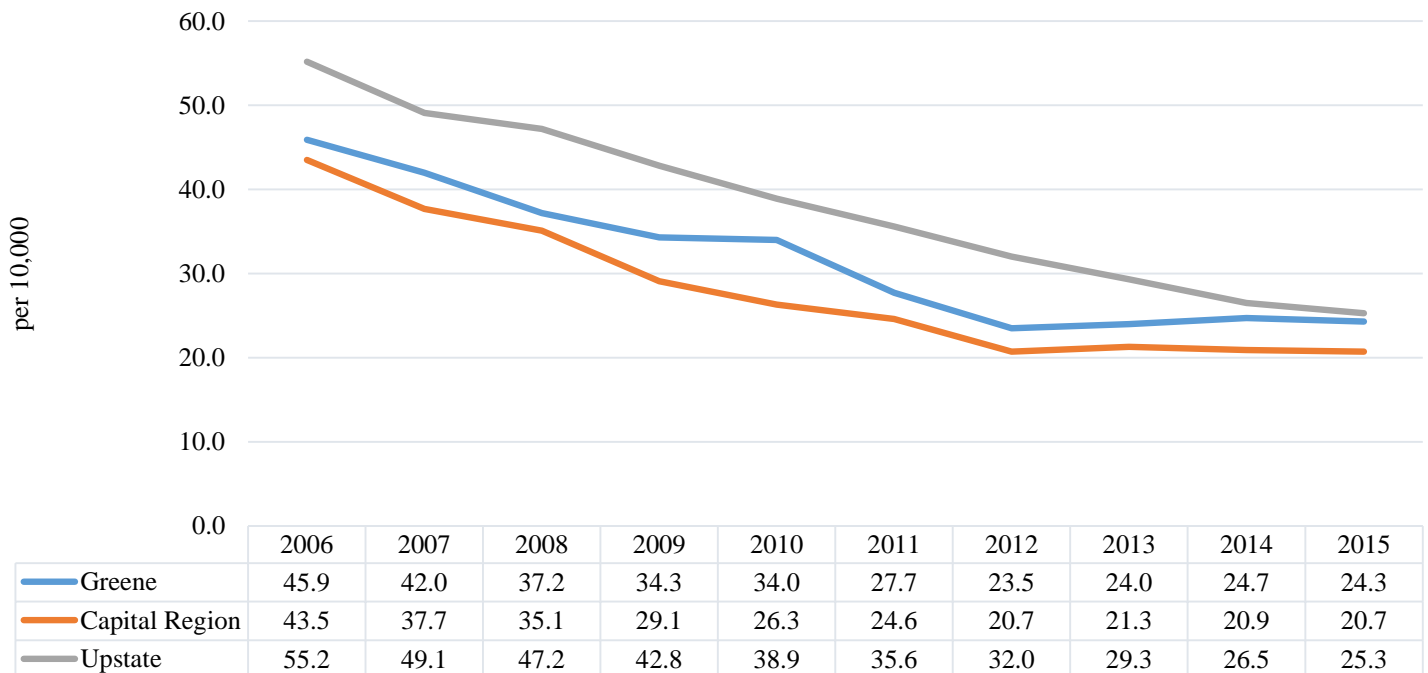
- An average of 16 Greene county residents died from stroke and 165 were hospitalized each year.
- Greene's age-adjusted stroke mortality rate was 17% lower and hospitalization rate 6% higher than Upstate.
- Greene's age-adjusted stroke mortality rate showed a 25% decrease and the hospitalization rate showed a 7% decrease over the last decade.
- Greene females actually had a 70% higher age-adjusted stroke rate than their male counterparts, while the hospitalization rate were similar.
- Age-adjusted stroke mortality and hospitalization rates increased with age.
- Black non-Hispanic residents had an almost 25% lower stroke hospitalization rate compared to white non-Hispanic residents.
- There were no socioeconomic trend in age-adjusted stroke mortality or hospitalization rates across Greene neighborhoods.

## Coronary Heart Disease

**Age-adjusted Coronary Heart Disease Mortality per 100,000, Greene, Capital Region and NYS excl. NYC, 2006-2015 <sup>14</sup>**



**Age-adjusted Coronary Heart Disease Hospitalizations per 10,000, Greene, Capital Region and NYS excl. NYC, 2006-2015 <sup>14</sup>**





**Age-adjusted Coronary Heart Disease Mortality Rate per 100,000, and Hospitalization Rate per 10,000, Greene County, Capital Region and NYS excl. NYC, 2013-2015**

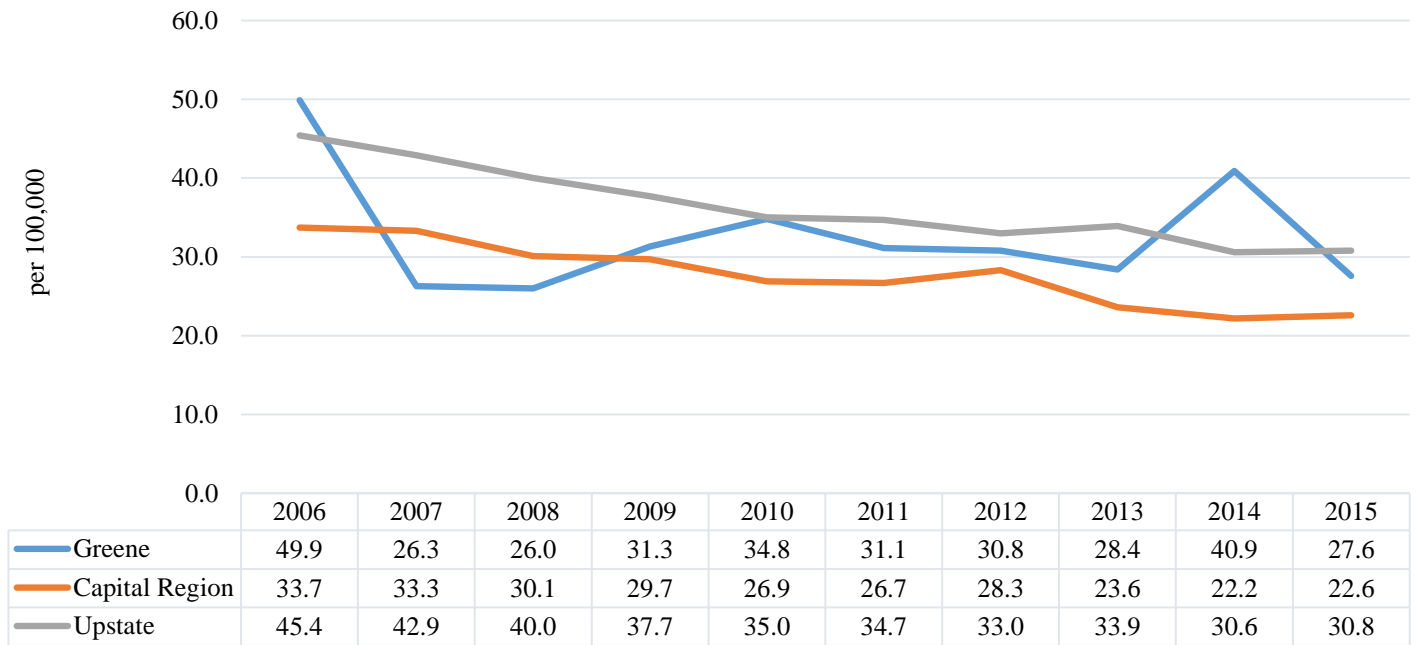
Coronary Heart Disease Mortality	Greene County		Capital Region		Upstate NY
	# (3 yr ave)	Rate	# (3 yr ave)	Rate	Rate
<b>Total</b>	91	126.2	1,410	110.7	120.0
<b>Age</b>					
25-44 years	s	s	15	6.6	7.8
45-64 years	12	71.5	198	65.2	69.6
65-74 years	19	334.2	220	264.9	276.0
75+ years	59	1400.3	978	1,271.1	1,390.1
<b>Gender</b>					
Male	47	143.8	729	142.3	154.3
Female	44	108.1	681	85.8	93.3
<b>Race/Ethnicity</b>					
White non-Hispanic	88	127.0	1,315	110.8	120.6
Black non-Hispanic	s	s	62	118.8	140.9
Hispanic	2	213.6	14	76.3	81.8
Other	0	0.0	19	89.4	93.1
<b>Socioeconomic Status</b>					
SES 1 (low)	2	72.1	72	156.2	na
SES 2	55	172.5	307	147.6	na
SES 3	23	81.4	362	109.2	na
SES 4	12	100.0	358	101.4	na
SES 5 (high)	s	s	291	89.2	na
Coronary Heart Disease Hospitalizations	Greene County		Capital Region		Upstate NY
	# (3 yr ave)	Rate	# (3 yr ave)	Rate	Rate
<b>Total</b>	168	24.3	2,512	20.9	27.0
<b>Age</b>					
25-44 years	7	6.5	115	5.3	5.8
45-64 years	66	42.6	990	33.9	41.6
65-74 years	45	80.4	643	76.2	99.7
75+ years	50	126.4	760	112.3	156.1
<b>Gender</b>					
Male	109	32.0	1,574	28.5	37.3
Female	59	17.0	938	14.3	18.1
<b>Race/Ethnicity</b>					
White non-Hispanic	146	22.2	2,190	20.1	25.0
Black non-Hispanic	6	33.1	138	22.0	28.9
Hispanic	2	9.5	27	10.4	23.0
Other	14	305.5	156	57.1	85.7
<b>Socioeconomic Status</b>					
SES 1 (low)	3	16.1	148	27.9	na
SES 2	76	27.5	488	26.0	na
SES 3	72	26.1	683	22.6	na
SES 4	21	17.3	669	20.4	na
SES 5 (high)	3	11.4	562	17.4	na

s: Data do not meet reporting criteria

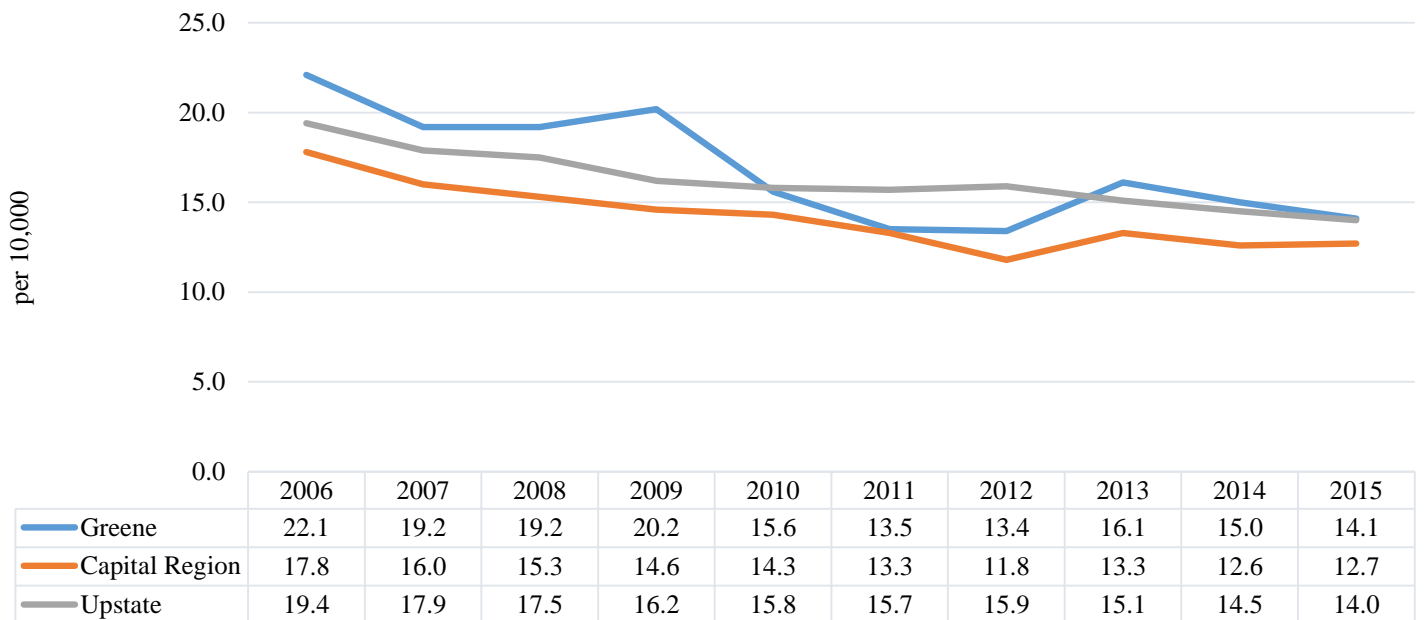
Red: fewer than 10 events in the numerator, therefore rate is unstable

## Heart Attack (Acute Myocardial Infarction)

**Age-adjusted Heart Attack Mortality per 100,000, Greene, Capital Region and NYS excl. NYC, 2006-2015 <sup>14</sup>**



**Age-adjusted Heart Attack Hospitalizations per 10,000, Greene, Capital Region and NYS excl. NYC, 2006-2015 <sup>14</sup>**



**Age-adjusted Heart Attack Mortality Rate per 100,000, and Hospitalization Rate per 10,000, Greene County, Capital Region and NYS excl. NYC, 2013-2015**

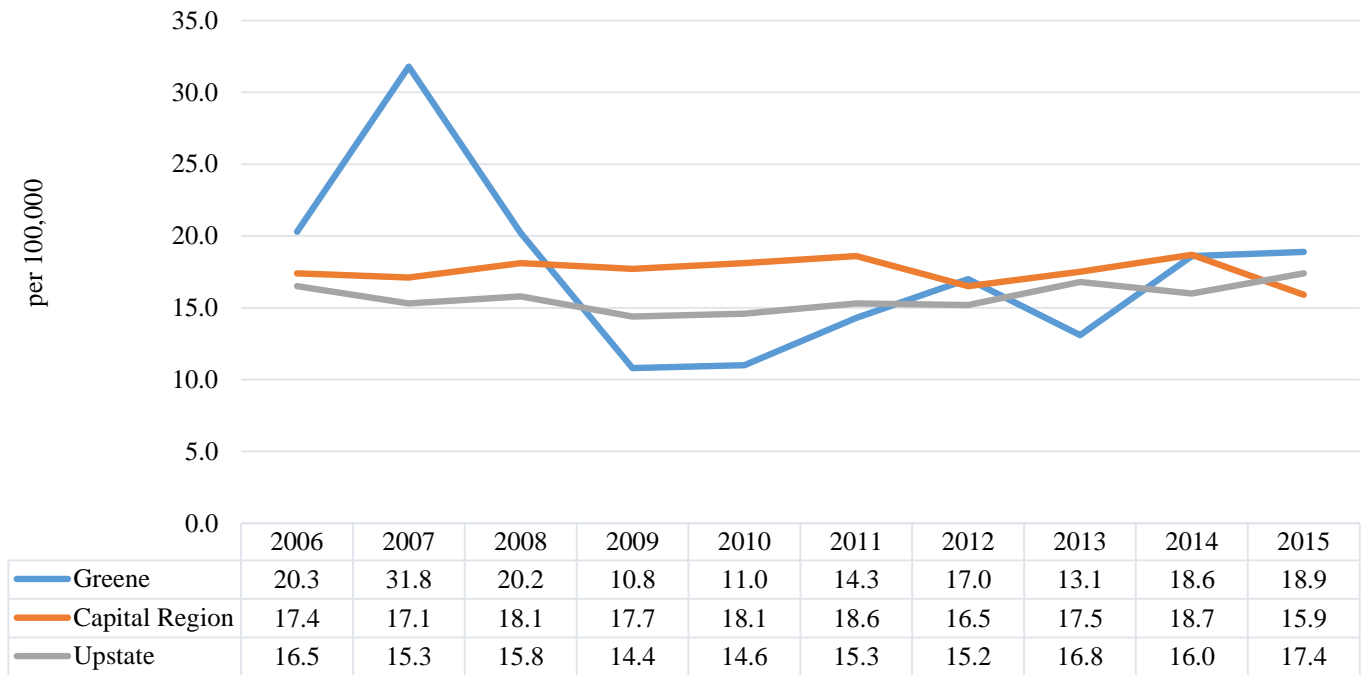
Heart Attack Mortality	Greene County		Capital Region		Upstate NY
	# (3 yr ave)	Rate	# (3 yr ave)	Rate	Rate
<b>Total</b>	24	32.1	285	22.7	31.7
<b>Age</b>					
25-44 years	s	s	3	1.5	2.1
45-64 years	5	27.3	46	15.6	20.2
65-74 years	6	109.2	49	59.8	85.2
75+ years	12	295.6	186	246.5	347.6
<b>Gender</b>					
Male	14	40.5	149	29.0	40.4
Female	10	22.8	135	17.6	24.7
<b>Race/Ethnicity</b>					
White non-Hispanic	22	31.7	263	22.6	32.5
Black non-Hispanic	s	s	15	26.8	33.4
Hispanic	s	s	3	19.3	18.5
Other	0	0.0	3	14.5	22.8
<b>Socioeconomic Status</b>					
SES 1 (low)	na	na	11	25.3	na
SES 2	15	48.0	63	31.7	na
SES 3	7	23.1	73	22.2	na
SES 4	2	18.5	76	21.9	na
SES 5 (high)	0	0.0	55	17.1	na
	<b>Greene County</b>		<b>Capital Region</b>		<b>Upstate NY</b>
<b>Heart Attack Hospitalizations</b>	# (3 yr ave)	Rate	# (3 yr ave)	Rate	Rate
<b>Total</b>	106	15.1	1,547	12.9	14.5
<b>Age</b>					
25-44 years	3	2.9	72	3.3	3.4
45-64 years	38	24.3	581	20.0	21.0
65-74 years	29	53.1	369	43.9	48.5
75+ years	35	87.5	523	75.3	93.4
<b>Gender</b>					
Male	67	19.5	933	17.1	19.4
Female	39	11.0	614	9.2	10.3
<b>Race/Ethnicity</b>					
White non-Hispanic	91	13.7	263	22.6	32.5
Black non-Hispanic	3	21.8	15	26.8	33.4
Hispanic	s	s	3	19.3	18.5
Other	10	244.9	3	14.5	22.8
<b>Socioeconomic Status</b>					
SES 1 (low)	3	13.2	94	18.5	na
SES 2	51	18.1	314	16.7	na
SES 3	43	15.3	424	14.0	na
SES 4	13	10.3	396	12.0	na
SES 5 (high)	2	9.6	347	10.8	na

s: Data do not meet reporting criteria

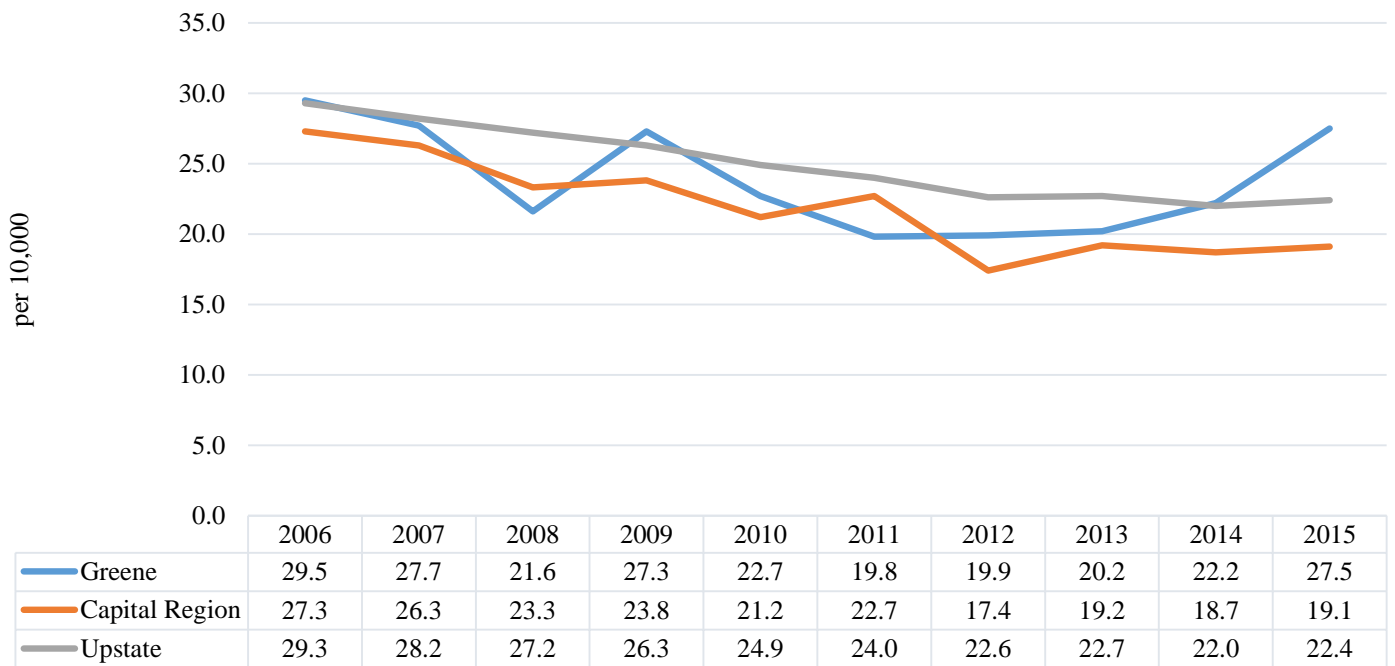
Red: fewer than 10 events in the numerator, therefore rate is unstable

## Congestive Heart Failure

**Age-adjusted Congestive Heart Failure Mortality per 100,000, Greene, Capital Region and NYS excl. NYC, 2006-2015 <sup>14</sup>**



**Age-adjusted Congestive Heart Failure Hospitalizations per 10,000, Greene, Capital Region and NYS excl. NYC, 2006-2015 <sup>14</sup>**



**Age-adjusted Congestive Heart Failure Mortality Rate per 100,000, and Hospitalization Rate per 10,000, Greene County, Capital Region and NYS excl. NYC, 2013-2015**

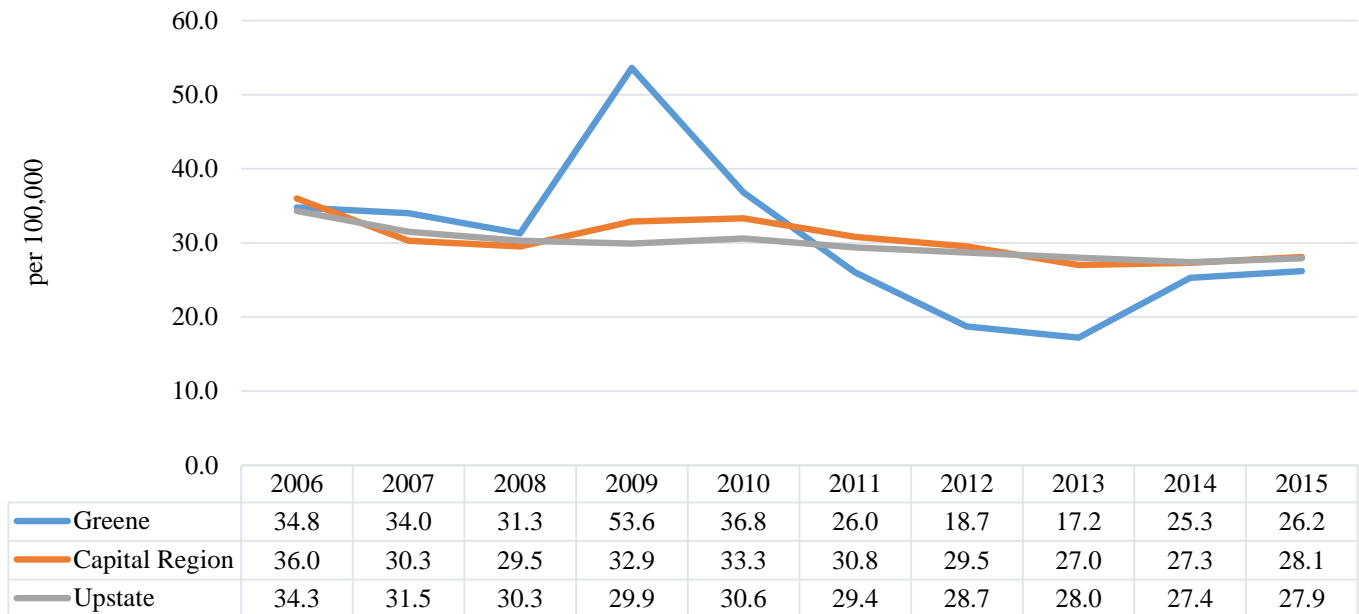
Congestive Heart Failure Mortality	Greene County		Capital Region		Upstate NY
	# (3 yr ave)	Rate	# (3 yr ave)	Rate	Rate
<b>Total</b>	12	17.1	227	17.4	16.7
<b>Age</b>					
25-44 years	s	s	s	s	0.4
45-64 years	s	s	7	2.2	3.6
65-74 years	2	46.9	21	27.0	23.2
75+ years	9	211.9	197	246.6	236.0
<b>Gender</b>					
Male	5	15.0	100	20.6	20.0
Female	8	17.8	127	15.4	14.5
<b>Race/Ethnicity</b>					
White non-Hispanic	12	16.8	215	17.5	17.1
Black non-Hispanic	s	s	7	13.9	15.2
Hispanic	s	s	3	18.5	9.0
Other	0	0.0	2	8.9	10.7
<b>Socioeconomic Status</b>					
SES 1 (low)	s	s	8	20.1	na
SES 2	6	17.8	39	17.6	na
SES 3	4	15.1	60	17.8	na
SES 4	2	16.0	59	16.5	na
SES 5 (high)	s	s	60	17.6	na
<b>Congestive Heart Failure Hospitalizations</b>					
	Greene County		Capital Region		Upstate NY
	# (3 yr ave)	Rate	# (3 yr ave)	Rate	Rate
<b>Total</b>	163	23.2	2,325	19.0	22.5
<b>Age</b>					
25-44 years	2	2.3	55	2.4	2.7
45-64 years	29	16.9	420	13.8	16.5
65-74 years	36	69.1	458	55.7	65.9
75+ years	96	235.8	1,388	190.9	223.0
<b>Gender</b>					
Male	78	23.9	1,130	22.0	27.1
Female	86	22.5	1,195	16.7	18.6
<b>Race/Ethnicity</b>					
White non-Hispanic	151	22.4	2,006	17.6	19.8
Black non-Hispanic	5	38.8	216	35.1	40.7
Hispanic	3	19.8	37	17.5	24.4
Other	4	129.6	66	30.4	51.3
<b>Socioeconomic Status</b>					
SES 1 (low)	8	33.4	172	35.3	na
SES 2	78	26.3	511	26.1	na
SES 3	52	19.2	674	21.6	na
SES 4	26	22.9	586	17.2	na
SES 5 (high)	0	0.0	494	15.4	na

s: Data do not meet reporting criteria

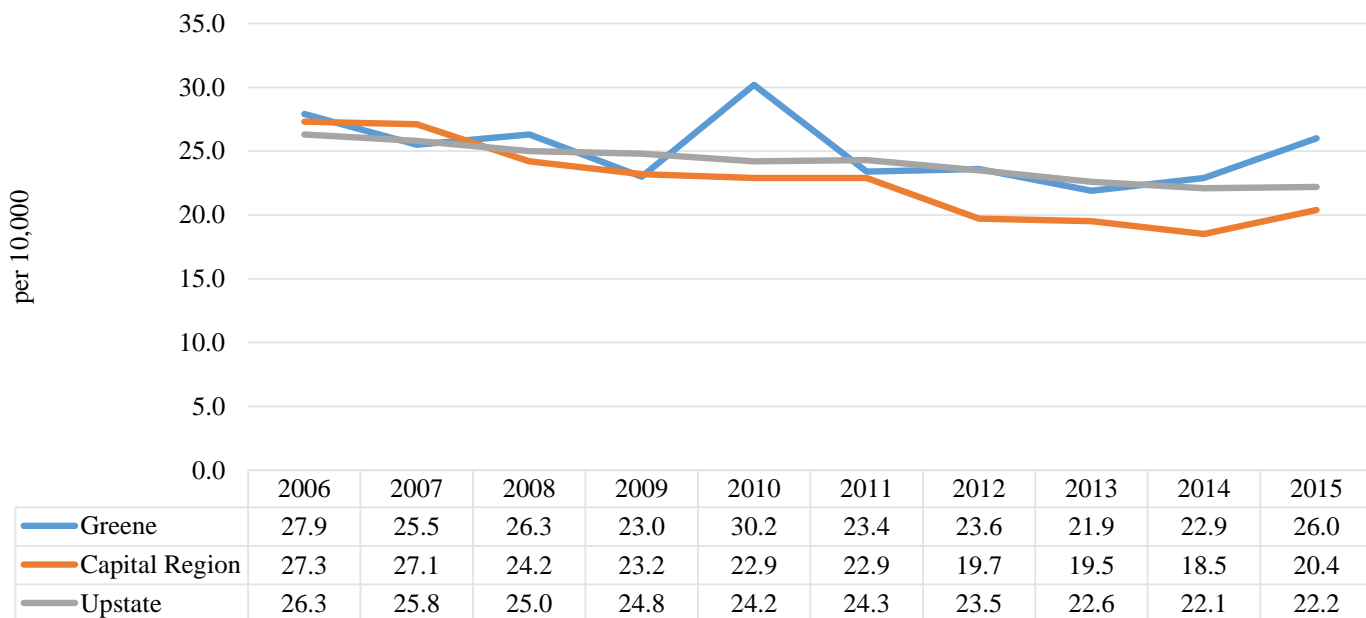
Red: fewer than 10 events in the numerator, therefore rate is unstable

## Cerebrovascular Disease (Stroke)

**Age-adjusted Cerebrovascular (Stroke) Mortality per 100,000,  
Greene, Capital Region and NYS excl. NYC, 2006-2015 <sup>14</sup>**



**Age-adjusted Cerebrovascular (Stroke) Hospitalizations per 10,000,  
Greene, Capital Region and NYS excl. NYC, 2006-2015 <sup>14</sup>**



**Age-adjusted Cerebrovascular Mortality Rate per 100,000, and Hospitalization Rate per 10,000, Greene County, Capital Region and NYS excl. NYC, 2013-2015**

	Greene County		Capital Region		Upstate NY
<b>Cerebrovascular Mortality</b>	# (3 yr ave)	Rate	# (3 yr ave)	Rate	Rate
<b>Total</b>	16	23.1	345	27.5	27.8
<b>Age</b>					
25-44 years	0	0.0	4	2.0	2.0
45-64 years	s	s	34	11.1	11.2
65-74 years	3	62.1	49	61.1	57.8
75+ years	12	277.3	256	335.6	344.4
<b>Gender</b>					
Male	5	15.8	1,137	21.6	24.4
Female	11	26.7	1,208	17.6	20.4
<b>Race/Ethnicity</b>					
White non-Hispanic	16	22.8	321	27.3	27.5
Black non-Hispanic	0	0.0	15	26.2	33.1
Hispanic	s	s	4	22.9	21.2
Other	0	0.0	5	26.1	25.5
<b>Socioeconomic Status</b>					
SES 1 (low)	s	s	15	32.8	na
SES 2	5	18.4	63	30.3	na
SES 3	8	28.2	91	28.4	na
SES 4	4	32.7	94	27.1	na
SES 5 (high)	na	na	79	24.2	na
	Greene County		Capital Region		Upstate NY
<b>Cerebrovascular Hospitalizations</b>	# (3 yr ave)	Rate	# (3 yr ave)	Rate	Rate
<b>Total</b>	164	23.6	2,344	19.4	22.3
<b>Age</b>					
25-44 years	6	5.8	79	3.5	4.7
45-64 years	45	28.5	622	21.0	23.7
65-74 years	40	75.0	551	66.1	75.7
75+ years	71	173.2	1,082	152.6	173.2
<b>Gender</b>					
Male	79	23.8	1,137	21.6	24.4
Female	85	23.0	1,208	17.6	20.4
<b>Race/Ethnicity</b>					
White non-Hispanic	151	22.9	2,023	18.2	20.1
Black non-Hispanic	3	17.6	171	28.7	35.0
Hispanic	2	9.5	30	12.0	22.5
Other	7	123.0	120	48.2	55.8
<b>Socioeconomic Status</b>					
SES 1 (low)	6	24.1	146	29.4	na
SES 2	77	27.3	454	23.8	na
SES 3	62	22.4	635	20.7	na
SES 4	25	20.6	628	18.8	na
SES 5 (high)	3	40.3	555	17.4	na

s: Data do not meet reporting criteria

Red: fewer than 10 events in the numerator, therefore rate is unstable

### Data Summary:

#### Coronary Heart Disease (CHD)

- About 230 Rensselaer county residents died from CHD and 390 were hospitalized each year.
- Rensselaer's age-adjusted CHD mortality and hospitalization rates were lower than Upstate and decreased 30% and 55% respectively over the last decade.
- Rensselaer males had 90% higher age-adjusted CHD mortality and 130% higher hospitalization rates compared to female residents.
- Age-adjusted CHD mortality and hospitalization rates increased with age.
- Black non-Hispanic residents had 7% higher age-adjusted CHD mortality rates, but 35% lower hospitalization rates compared to white non-Hispanic residents. Hispanic residents had 50% lower CHD hospitalization rates than their white-non-Hispanic counterparts.
- Rensselaer had no neighborhoods in SES 1 (low). Residents in low socioeconomic neighborhoods in the Rensselaer (SES 2) had 35% higher age-adjusted CHD mortality and 45% higher hospitalization rates compared to residents from high socioeconomic areas (SES 5).

#### Heart Attack (acute myocardial infarction)

- An average of 50 Rensselaer county residents died from heart attack and 250 were hospitalized each year.
- Rensselaer's age-adjusted heart attack mortality and hospitalization rates were lower than Upstate and each decreased about 20% over the last decade.
- Rensselaer males had 80% higher age-adjusted heart attack mortality and 110% higher hospitalization rates compared to female residents.
- Age-adjusted heart attack mortality and hospitalization rates increased with age.
- Black non-Hispanic residents had 50% higher age-adjusted heart attack mortality rates, but over 40% lower hospitalization rates compared to white non-Hispanic residents.
- Residents in low socioeconomic neighborhoods in Rensselaer (SES 2) had just a 4% higher age-adjusted heart attack mortality, but a 50% higher hospitalization rates compared to residents from high socioeconomic areas (SES 5).



## **Congestive Health Failure (CHF)**

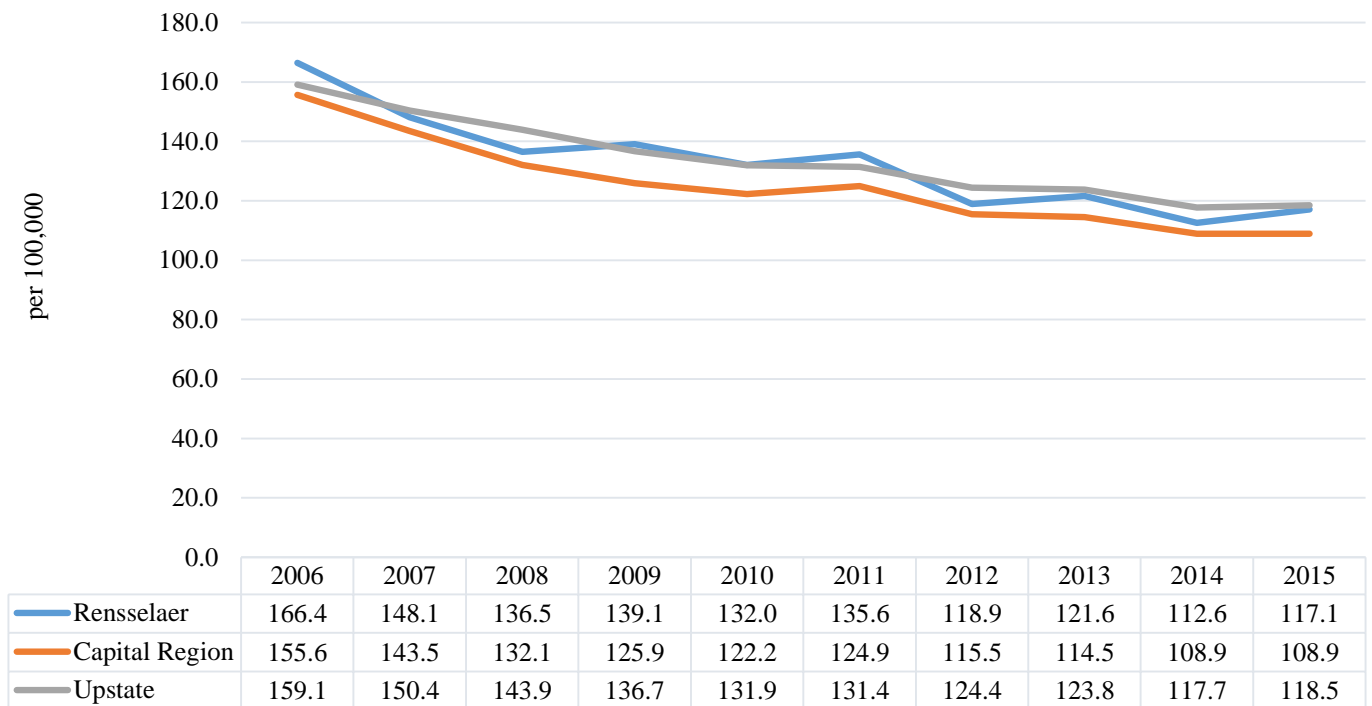
- An average of 40 Rensselaer county residents died from CHF and 350 were hospitalized each year.
- Rensselaer's age-adjusted CHF mortality was higher (25%), but hospitalization rates were lower (20%) than Upstate.
- Rensselaer's age-adjusted CHF mortality and hospitalization trends decreased over 10% and 40% respectively over the last decade.
- Rensselaer males had over 70% higher age-adjusted CHF mortality rate and 40% higher hospitalization rate compared to female residents.
- Age-adjusted CHF mortality and hospitalization rates increased with age.
- Black non-Hispanic residents had a 60% higher CHF hospitalization rate compared to white non-Hispanic residents. Hispanic residents had 15% lower CHF hospitalization rates than their white-non-Hispanic counterparts.
- There were no socioeconomic trend in age-adjusted CHF mortality or hospitalization rates across Rensselaer neighborhoods.

## **Cerebrovascular Disease (Stroke)**

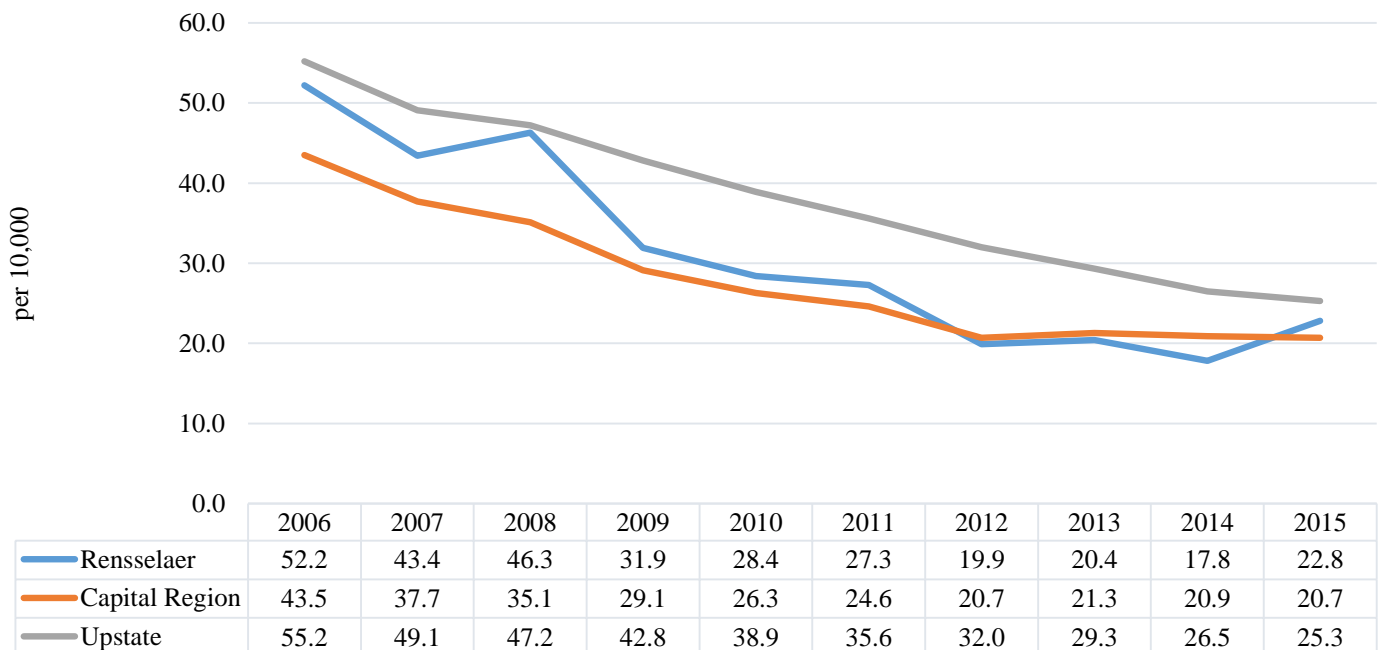
- An average of 50 Rensselaer county residents died from stroke and 375 were hospitalized each year.
- Rensselaer's age-adjusted stroke mortality rate was just 3% lower and hospitalization rate 13% lower than Upstate.
- Rensselaer's age-adjusted stroke mortality and hospitalization trends decreased almost 20% and 35% respectively over the last decade.
- Rensselaer females actually had a 10% higher age-adjusted stroke rate than their male counterparts. However, males had a 30% higher hospitalization rate compared to female residents.
- Age-adjusted stroke mortality and hospitalization rates increased with age.
- Black non-Hispanic residents had an almost 60% higher stroke hospitalization rate compared to white non-Hispanic residents. Hispanic residents had a similar stroke hospitalization rates than their white-non-Hispanic counterparts.
- There were no socioeconomic trend in age-adjusted stroke mortality, but a slight socioeconomic trend for stroke hospitalization rates across Rensselaer neighborhoods (SES 2 had a 20% higher rate than SES 5).

## Coronary Heart Disease

**Age-adjusted Coronary Heart Disease Mortality per 100,000, Rensselaer, Capital Region and NYS excl. NYC, 2006-2015 <sup>14</sup>**



**Age-adjusted Coronary Heart Disease Hospitalizations per 10,000, Rensselaer, Capital Region and NYS excl. NYC, 2006-2015 <sup>14</sup>**



**Age-adjusted Coronary Heart Disease Mortality Rate per 100,000, and Hospitalization Rate per 10,000, Rensselaer County, Capital Region and NYS excl. NYC, 2013-2015**

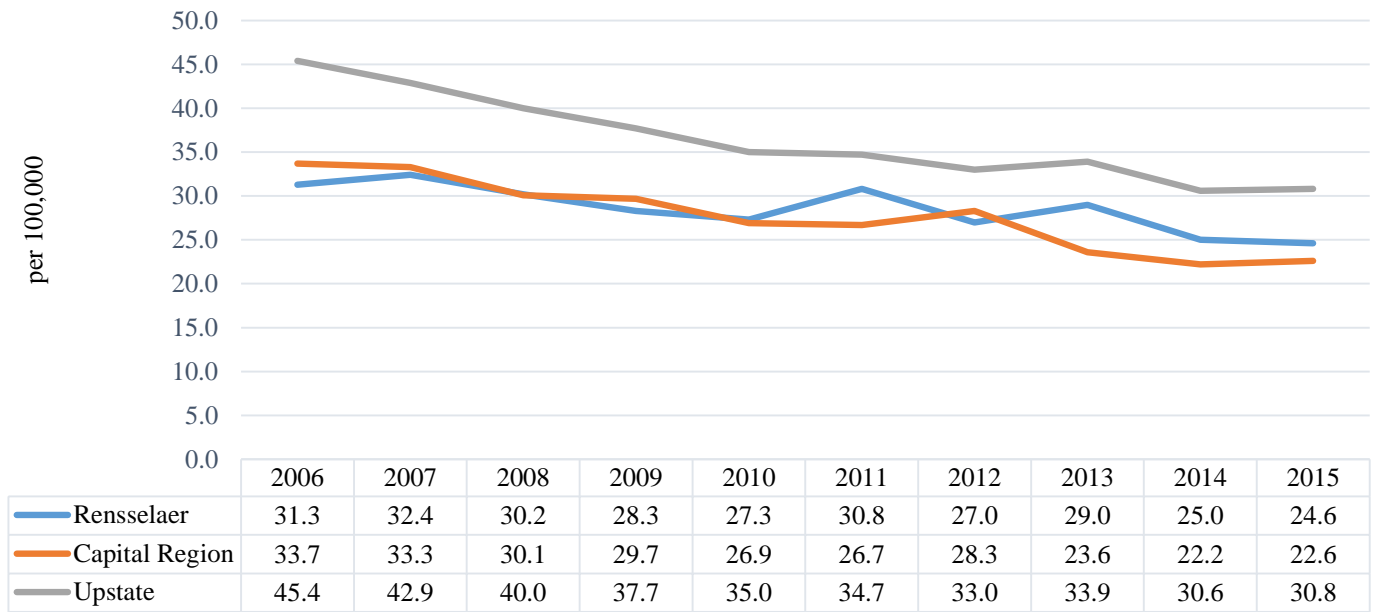
Coronary Heart Disease Mortality	Rensselaer County		Capital Region		Upstate NY
	# (3 yr ave)	Rate	# (3 yr ave)	Rate	Rate
<b>Total</b>	230	117.2	1,410	110.7	120.0
<b>Age</b>					
25-44 years	3	7.9	15	6.6	7.8
45-64 years	33	66.3	198	65.2	69.6
65-74 years	41	315.6	220	264.9	276.0
75+ years	153	1313.1	978	1,271.1	1,390.1
<b>Gender</b>					
Male	128	160.7	729	142.3	154.3
Female	102	85.4	681	85.8	93.3
<b>Race/Ethnicity</b>					
White non-Hispanic	220	118.2	1,315	110.8	120.6
Black non-Hispanic	8	126.7	62	118.8	140.9
Hispanic	s	s	14	76.3	81.8
Other	s	s	19	89.4	93.1
<b>Socioeconomic Status</b>					
SES 1 (low)	na	na	72	156.2	na
SES 2	119	583.1	307	147.6	na
SES 3	34	407.2	362	109.2	na
SES 4	29	380.0	358	101.4	na
SES 5 (high)	46	434.2	291	89.2	na
<b>Coronary Heart Disease Hospitalizations</b>	Rensselaer County		Capital Region		Upstate NY
	# (3 yr ave)	Rate	# (3 yr ave)	Rate	Rate
<b>Total</b>	391	20.3	2,512	20.9	27.0
<b>Age</b>					
25-44 years	18	5.0	115	5.3	5.8
45-64 years	159	33.0	990	33.9	41.6
65-74 years	104	77.7	643	76.2	99.7
75+ years	108	105.2	760	112.3	156.1
<b>Gender</b>					
Male	258	29.1	1,574	28.5	37.3
Female	133	12.7	938	14.3	18.1
<b>Race/Ethnicity</b>					
White non-Hispanic	355	19.1	2,190	20.1	25.0
Black non-Hispanic	11	12.6	138	22.0	28.9
Hispanic	3	9.8	27	10.4	23.0
Other	21	90.1	156	57.1	85.7
<b>Socioeconomic Status</b>					
SES 1 (low)	na	na	148	27.9	na
SES 2	180	24.9	488	26.0	na
SES 3	96	20.8	683	22.6	na
SES 4	66	21.2	669	20.4	na
SES 5 (high)	70	17.4	562	17.4	na

s: Data do not meet reporting criteria

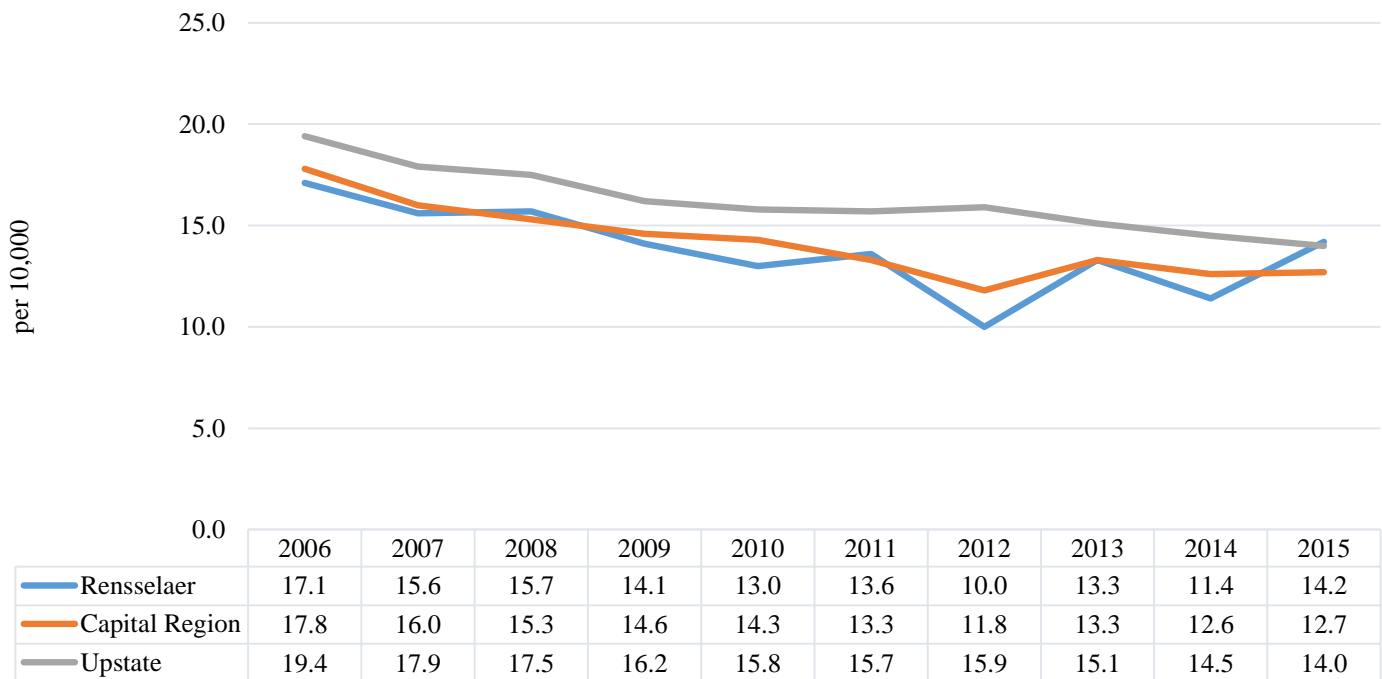
Red: fewer than 10 events in the numerator, therefore rate is unstable

## Heart Attack (Acute Myocardial Infarction)

**Age-adjusted Heart Attack Mortality per 100,000, Rensselaer, Capital Region and NYS excl. NYC, 2006-2015 <sup>14</sup>**



**Age-adjusted Heart Attack Hospitalizations per 10,000, Rensselaer, Capital Region and NYS excl. NYC, 2006-2015 <sup>14</sup>**



**Age-adjusted Heart Attack Mortality Rate per 100,000, and Hospitalization Rate per 10,000,  
Rensselaer County, Capital Region and NYS excl. NYC, 2013-2015**

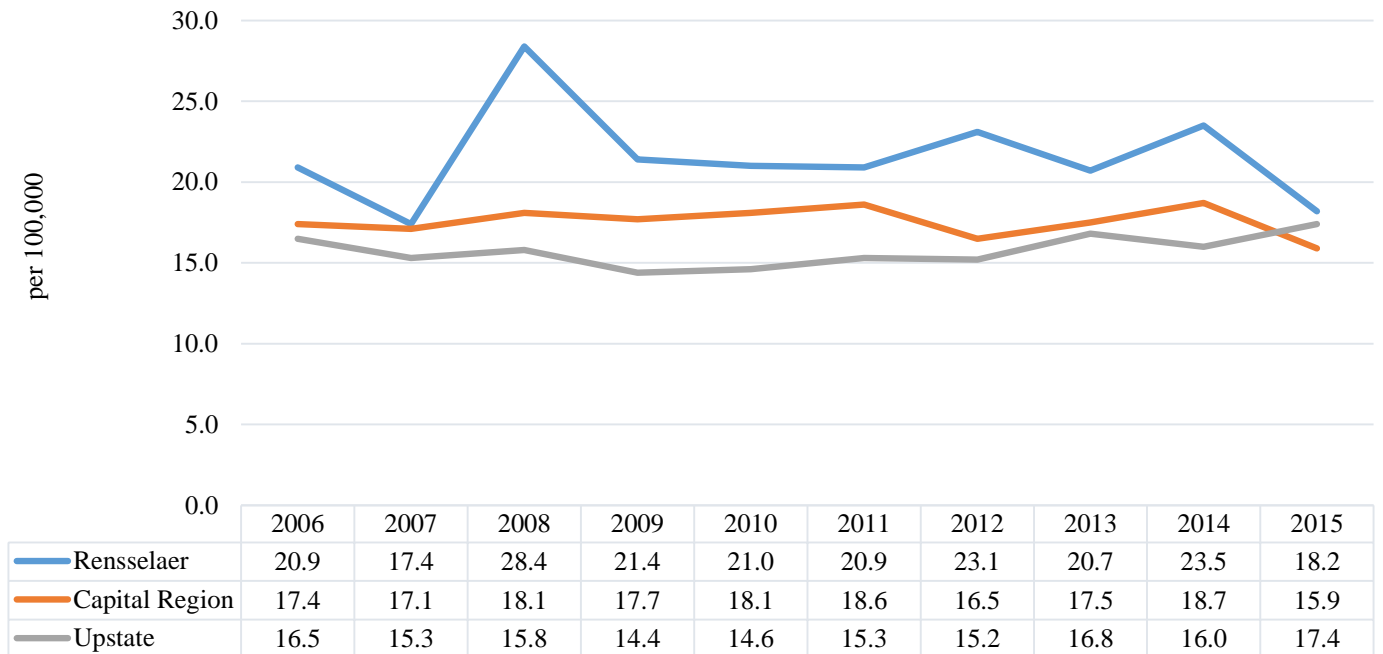
Heart Attack Mortality	Rensselaer County		Capital Region		Upstate NY
	# (3 yr ave)	Rate	# (3 yr ave)	Rate	Rate
<b>Total</b>	50	26.2	285	22.7	31.7
<b>Age</b>					
25-44 years	s	s	3	1.5	2.1
45-64 years	7	14.4	46	15.6	20.2
65-74 years	10	78.0	49	59.8	85.2
75+ years	33	286.2	186	246.5	347.6
<b>Gender</b>					
Male	28	35.7	149	29.0	40.4
Female	22	19.7	135	17.6	24.7
<b>Race/Ethnicity</b>					
White non-Hispanic	47	25.8	263	22.6	32.5
Black non-Hispanic	3	39.0	15	26.8	33.4
Hispanic	s	s	3	19.3	18.5
Other	0	0.0	3	14.5	22.8
<b>Socioeconomic Status</b>					
SES 1 (low)	na	na	11	25.3	na
SES 2	24	32.5	63	31.7	na
SES 3	6	13.6	73	22.2	na
SES 4	8	25.3	76	21.9	na
SES 5 (high)	11	31.4	55	17.1	na
<b>Heart Attack Hospitalizations</b>	Rensselaer County		Capital Region		Upstate NY
	# (3 yr ave)	Rate	# (3 yr ave)	Rate	Rate
<b>Total</b>	249	13.0	1,547	12.9	14.5
<b>Age</b>					
25-44 years	11	3.2	72	3.3	3.4
45-64 years	100	20.9	581	20.0	21.0
65-74 years	62	46.9	369	43.9	48.5
75+ years	75	70.8	523	75.3	93.4
<b>Gender</b>					
Male	158	18.1	933	17.1	19.4
Female	91	8.5	614	9.2	10.3
<b>Race/Ethnicity</b>					
White non-Hispanic	227	12.8	263	22.6	32.5
Black non-Hispanic	7	7.4	15	26.8	33.4
Hispanic	2	6.5	3	19.3	18.5
Other	13	52.8	3	14.5	22.8
<b>Socioeconomic Status</b>					
SES 1 (low)	na	na	94	18.5	na
SES 2	119	16.5	314	16.7	na
SES 3	62	13.4	424	14.0	na
SES 4	40	12.6	396	12.0	na
SES 5 (high)	44	11.1	347	10.8	na

s: Data do not meet reporting criteria

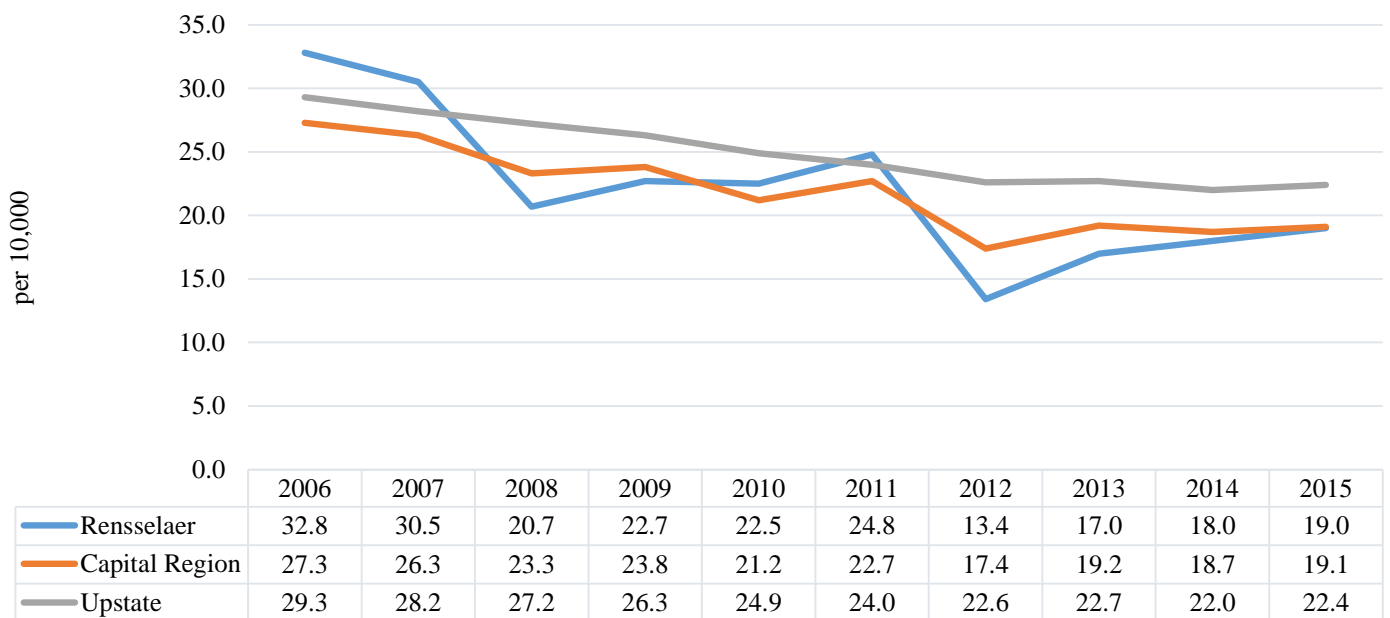
Red: fewer than 10 events in the numerator, therefore rate is unstable

## Congestive Heart Failure

**Age-adjusted Congestive Heart Failure Mortality per 100,000,  
Rensselaer, Capital Region and NYS excl. NYC, 2006-2015 <sup>14</sup>**



**Age-adjusted Congestive Heart Failure Hospitalizations per 10,000,  
Rensselaer, Capital Region and NYS excl. NYC, 2006-2015 <sup>14</sup>**



**Age-adjusted Congestive Heart Failure Mortality Rate per 100,000, and Hospitalization Rate per 10,000, Rensselaer County, Capital Region and NYS excl. NYC, 2013-2015**

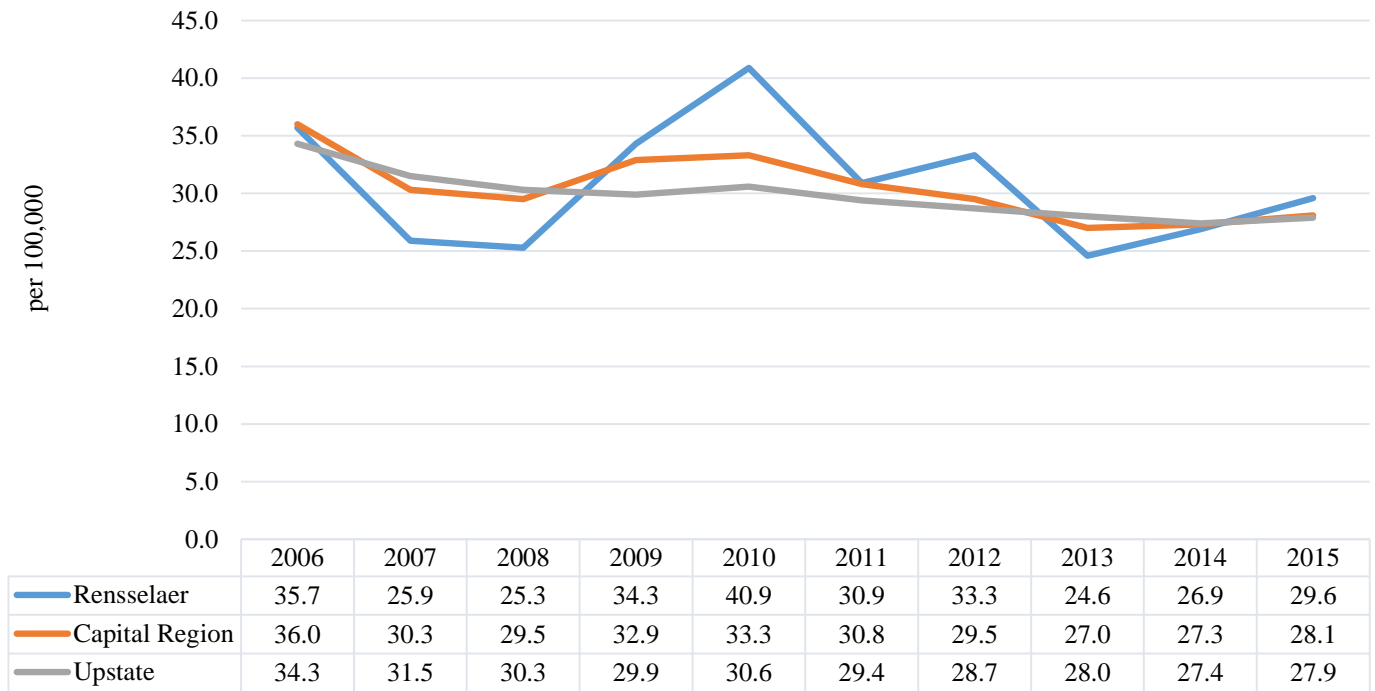
	Rensselaer County		Capital Region		Upstate NY
<b>Congestive Heart Failure Mortality</b>	# (3 yr ave)	Rate	# (3 yr ave)	Rate	Rate
<b>Total</b>	41	20.7	227	17.4	16.7
<b>Age</b>					
25-44 years	s	s	s	s	0.4
45-64 years	s	s	7	2.2	3.6
65-74 years	4	29.6	21	27.0	23.2
75+ years	36	298.1	197	246.6	236.0
<b>Gender</b>					
Male	20	27.7	100	20.6	20.0
Female	21	16.1	127	15.4	14.5
<b>Race/Ethnicity</b>					
White non-Hispanic	40	21.0	215	17.5	17.1
Black non-Hispanic	s	s	7	13.9	15.2
Hispanic	0	0.0	3	18.5	9.0
Other	s	s	2	8.9	10.7
<b>Socioeconomic Status</b>					
SES 1 (low)	na	na	8	20.1	na
SES 2	16	19.1	39	17.6	na
SES 3	8	15.6	60	17.8	na
SES 4	6	22.0	59	16.5	na
SES 5 (high)	10	30.5	60	17.6	na
	Rensselaer County		Capital Region		Upstate NY
<b>Congestive Heart Failure Hospitalizations</b>	# (3 yr ave)	Rate	# (3 yr ave)	Rate	Rate
<b>Total</b>	346	18.0	2,325	19.0	22.5
<b>Age</b>					
25-44 years	7	1.9	55	2.4	2.7
45-64 years	69	13.8	420	13.8	16.5
65-74 years	71	54.0	458	55.7	65.9
75+ years	199	179.7	1,388	190.9	223.0
<b>Gender</b>					
Male	177	21.7	1,130	22.0	27.1
Female	170	15.4	1,195	16.7	18.6
<b>Race/Ethnicity</b>					
White non-Hispanic	312	17.2	2,006	17.6	19.8
Black non-Hispanic	22	27.7	216	35.1	40.7
Hispanic	5	16.2	37	17.5	24.4
Other	7	39.9	66	30.4	51.3
<b>Socioeconomic Status</b>					
SES 1 (low)	na	na	172	35.3	na
SES 2	210	27.6	511	26.1	na
SES 3	85	18.2	674	21.6	na
SES 4	44	15.0	586	17.2	na
SES 5 (high)	66	17.4	494	15.4	na

s: Data do not meet reporting criteria

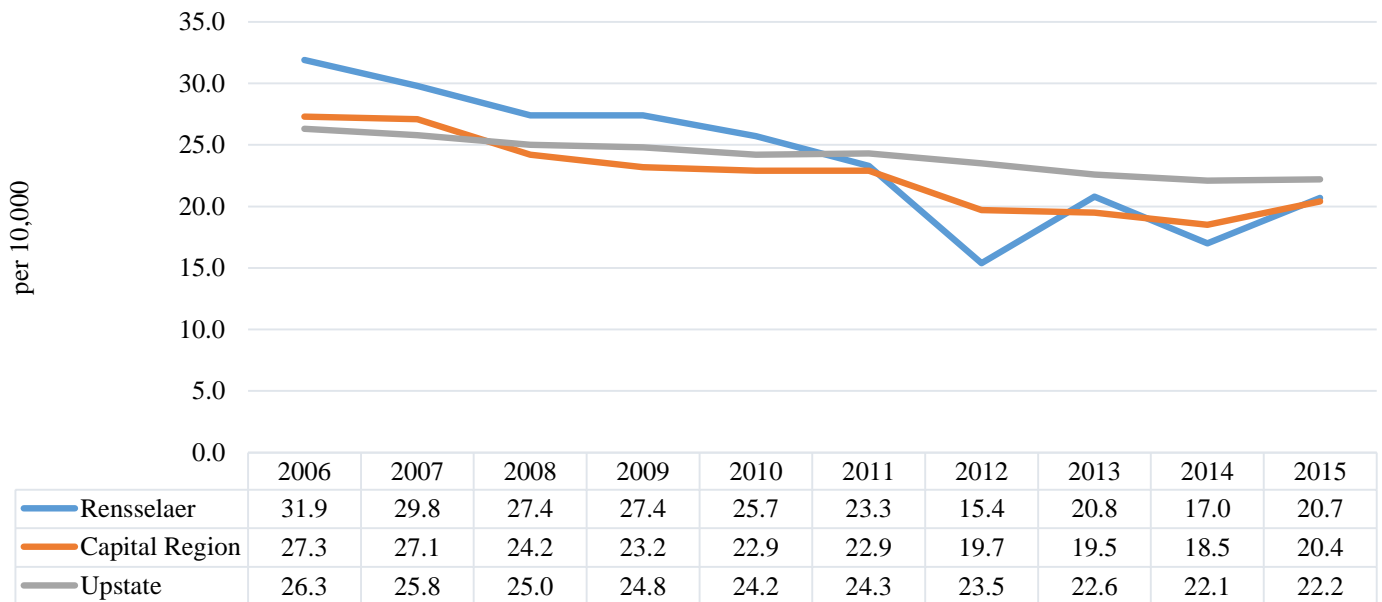
Red: fewer than 10 events in the numerator, therefore rate is unstable

## Cerebrovascular Disease (Stroke)

**Age-adjusted Cerebrovascular (Stroke) Mortality per 100,000, Rensselaer, Capital Region and NYS excl. NYC, 2006-2015 <sup>14</sup>**



**Age-adjusted Cerebrovascular (Stroke) Hospitalizations per 10,000, Rensselaer, Capital Region and NYS excl. NYC, 2006-2015 <sup>14</sup>**





**Age-adjusted Cerebrovascular Mortality Rate per 100,000, and Hospitalization Rate per 10,000, Rensselaer County, Capital Region and NYS excl. NYC, 2013-2015**

	Rensselaer County		Capital Region		Upstate NY
<b>Cerebrovascular Mortality</b>	# (3 yr ave)	Rate	# (3 yr ave)	Rate	Rate
<b>Total</b>	53	27.1	345	27.5	27.8
<b>Age</b>					
25-44 years	s	s	4	2.0	2.0
45-64 years	6	12.0	34	11.1	11.2
65-74 years	8	65.6	49	61.1	57.8
75+ years	38	322.7	256	335.6	344.4
<b>Gender</b>					
Male	19	25.0	136	27.5	28.0
Female	34	27.7	209	27.0	27.1
<b>Race/Ethnicity</b>					
White non-Hispanic	50	27.0	321	27.3	27.5
Black non-Hispanic	2	39.5	15	26.2	33.1
Hispanic	s	s	4	22.9	21.2
Other	0	0.0	5	26.1	25.5
<b>Socioeconomic Status</b>					
SES 1 (low)	na	na	15	32.8	na
SES 2	24	29.4	63	30.3	na
SES 3	10	21.5	91	28.4	na
SES 4	6	21.9	94	27.1	na
SES 5 (high)	11	31.0	79	24.2	na
	<b>Rensselaer County</b>		<b>Capital Region</b>		<b>Upstate NY</b>
<b>Cerebrovascular Hospitalizations</b>	# (3 yr ave)	Rate	# (3 yr ave)	Rate	Rate
<b>Total</b>	373	19.5	2,344	19.4	22.3
<b>Age</b>					
25-44 years	12	3.3	79	3.5	4.7
45-64 years	105	21.0	622	21.0	23.7
65-74 years	89	67.3	551	66.1	75.7
75+ years	166	153.6	1,082	152.6	173.2
<b>Gender</b>					
Male	186	22.3	1,137	21.6	24.4
Female	188	17.2	1,208	17.6	20.4
<b>Race/Ethnicity</b>					
White non-Hispanic	331	18.4	2,023	18.2	20.1
Black non-Hispanic	22	28.9	171	28.7	35.0
Hispanic	6	18.0	30	12.0	22.5
Other	14	64.0	120	48.2	55.8
<b>Socioeconomic Status</b>					
SES 1 (low)	na	na	146	29.4	na
SES 2	180	24.2	454	23.8	na
SES 3	97	20.9	635	20.7	na
SES 4	66	21.7	628	18.8	na
SES 5 (high)	73	19.2	555	17.4	na

s: Data do not meet reporting criteria

Red: fewer than 10 events in the numerator, therefore rate is unstable

## Data Summary:

### Coronary Heart Disease (CHD)

- About 270 Saratoga county residents died from CHD and 580 were hospitalized each year.
- Saratoga's age-adjusted CHD mortality and hospitalization rates were lower than Upstate and decreased 30% and 55% respectively over the last decade.
- Saratoga males had 50% higher age-adjusted CHD mortality and 120% higher hospitalization rates compared to female residents.
- Age-adjusted CHD mortality and hospitalization rates increased with age.
- Black non-Hispanic and Hispanic residents had 50% lower age-adjusted CHD hospitalization rates compared to white non-Hispanic residents.
- Saratoga had no neighborhoods in SES 1 or SES 2.

### Heart Attack (acute myocardial infarction)

- An average of 60 Saratoga county residents died from heart attack and 330 were hospitalized each year.
- Saratoga's age-adjusted heart attack mortality and hospitalization rates were lower than Upstate, and decreased 100% and 30% respectively over the last decade.
- Saratoga males had 65% higher age-adjusted heart attack mortality and 100% higher hospitalization rates compared to female residents.
- Age-adjusted heart attack mortality and hospitalization rates increased with age.
- Saratoga had no neighborhoods in SES 1 or SES 2.

### Congestive Health Failure (CHF)

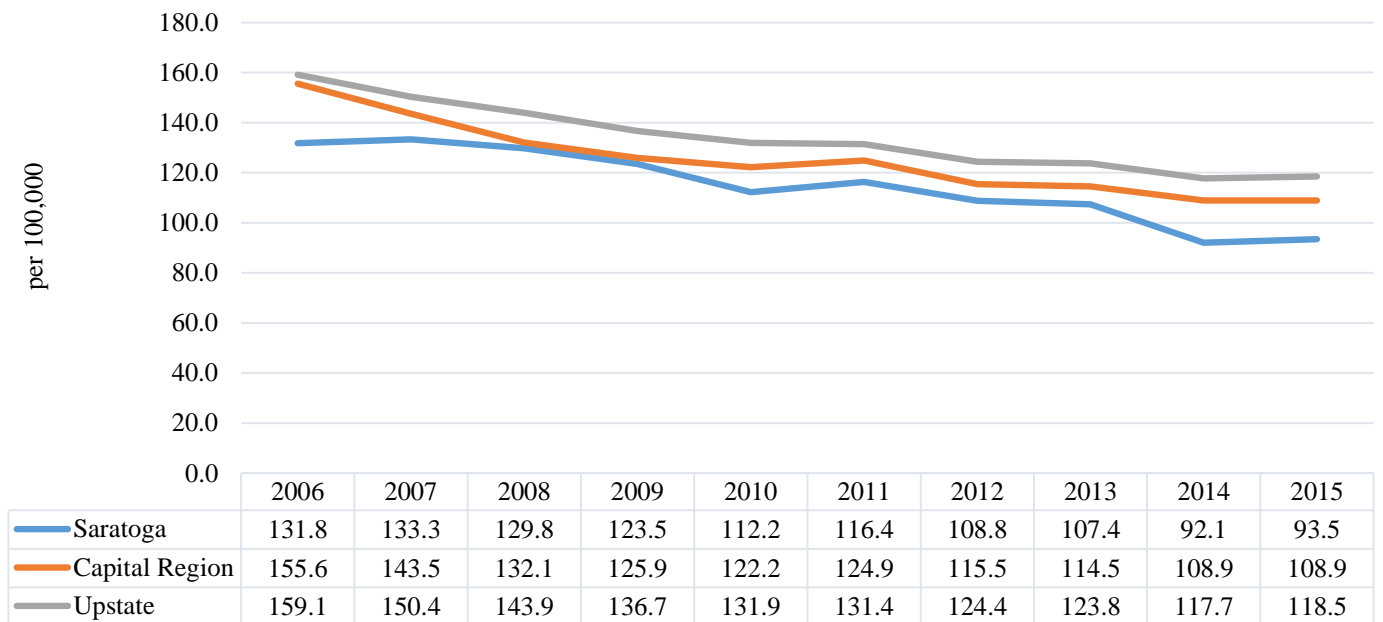
- An average of 36 Saratoga county residents died from CHF and 440 were hospitalized each year.
- Saratoga's age-adjusted CHF mortality and hospitalization rates were 25% higher than Upstate.
- Saratoga's age-adjusted CHF mortality and hospitalization trends decreased 20% and 40% respectively over the last decade.
- Saratoga males had a 10% higher age-adjusted CHF mortality rate and 35% higher CHF hospitalization rate compared to female residents.
- Age-adjusted CHF mortality and hospitalization rates increased with age.
- Black non-Hispanic residents had an 80% higher CHF hospitalization rate compared to white non-Hispanic residents. Hispanic residents had 50% lower CHF hospitalization rates than their white-non-Hispanic counterparts.
- Saratoga had no neighborhoods in SES 1 or SES 2.

## **Cerebrovascular Disease (Stroke)**

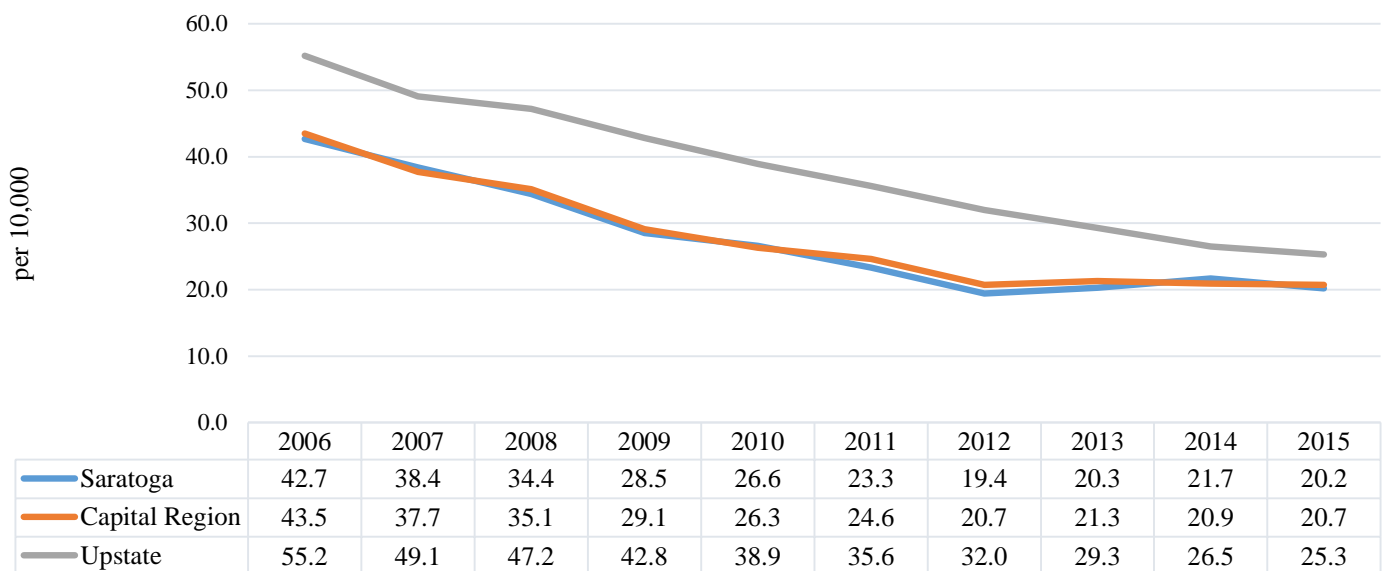
- An average of 75 Saratoga county residents died from stroke and 480 were hospitalized each year.
- Saratoga's age-adjusted stroke mortality rate was just 2% lower and hospitalization rate 22% lower than Upstate.
- Saratoga's age-adjusted stroke mortality and hospitalization trends decreased almost 25% and 30% respectively over the last decade.
- Saratoga males had a 17% higher age-adjusted stroke mortality rate and 30% higher hospitalization rate compared to female residents.
- Age-adjusted stroke mortality and hospitalization rates increased with age.
- Black non-Hispanic residents had a 25% higher stroke hospitalization rate compared to white non-Hispanic residents. Hispanic residents had an almost 75% lower stroke hospitalization rate than their white-non-Hispanic counterparts.
- Saratoga had no neighborhoods in SES 1 or SES 2.

## Coronary Heart Disease

**Age-adjusted Coronary Heart Disease Mortality per 100,000, Saratoga, Capital Region and NYS excl. NYC, 2006-2015 <sup>14</sup>**



**Age-adjusted Coronary Heart Disease Hospitalizations per 10,000, Saratoga, Capital Region and NYS excl. NYC, 2006-2015 <sup>14</sup>**



**Age-adjusted Coronary Heart Disease Mortality Rate per 100,000, and Hospitalization Rate per 10,000, Saratoga County, Capital Region and NYS excl. NYC, 2013-2015**

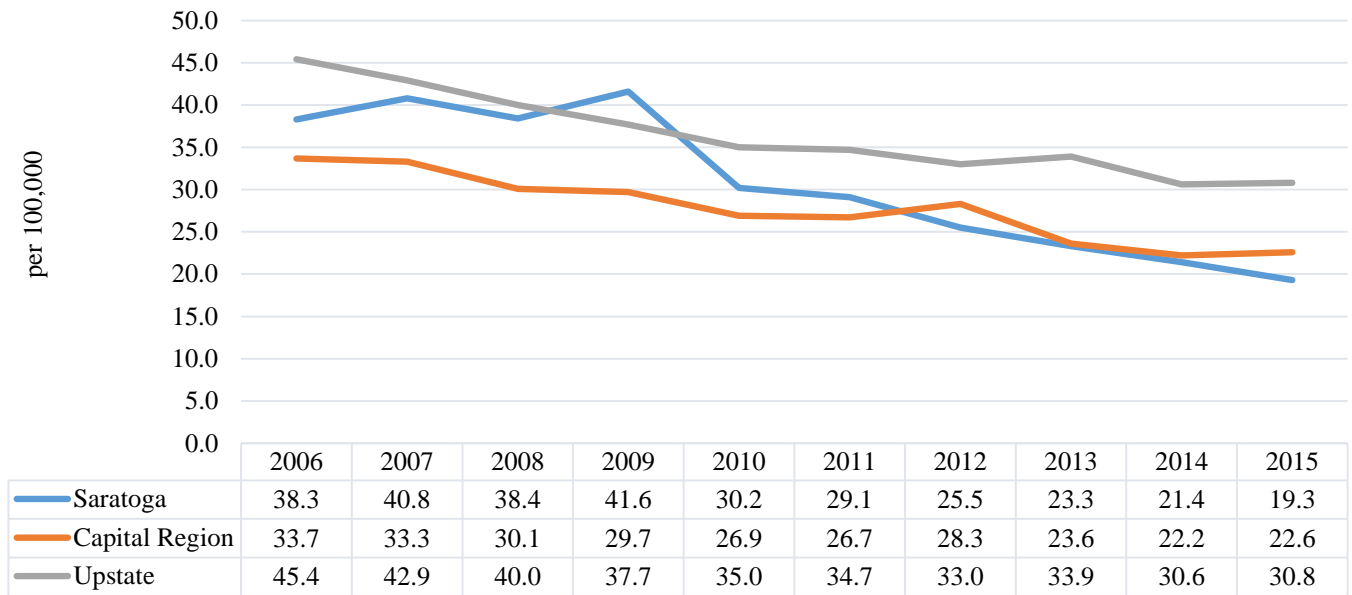
Coronary Heart Disease Mortality	Saratoga County		Capital Region		Upstate NY
	# (3 yr ave)	Rate	# (3 yr ave)	Rate	Rate
<b>Total</b>	267	97.4	1,410	110.7	120.0
<b>Age</b>					
25-44 years	2	3.8	15	6.6	7.8
45-64 years	32	43.6	198	65.2	69.6
65-74 years	43	215.2	220	264.9	276.0
75+ years	190	1198.9	978	1,271.1	1,390.1
<b>Gender</b>					
Male	135	119.7	729	142.3	154.3
Female	132	78.5	681	85.8	93.3
<b>Race/Ethnicity</b>					
White non-Hispanic	261	98.6	1,315	110.8	120.6
Black non-Hispanic	2	57.2	62	118.8	140.9
Hispanic	s	s	14	76.3	81.8
Other	3	118.2	19	89.4	93.1
<b>Socioeconomic Status</b>					
SES 1 (low)	na	na	72	156.2	na
SES 2	na	na	307	147.6	na
SES 3	28	83.0	362	109.2	na
SES 4	159	114.0	358	101.4	na
SES 5 (high)	74	76.8	291	89.2	na
	<b>Saratoga County</b>		<b>Capital Region</b>		<b>Upstate NY</b>
<b>Coronary Heart Disease Hospitalizations</b>	# (3 yr ave)	Rate	# (3 yr ave)	Rate	Rate
<b>Total</b>	582	20.7	2,512	20.9	27.0
<b>Age</b>					
25-44 years	24	4.3	115	5.3	5.8
45-64 years	218	30.2	990	33.9	41.6
65-74 years	175	85.7	643	76.2	99.7
75+ years	165	116.3	760	112.3	156.1
<b>Gender</b>					
Male	383	29.2	1,574	28.5	37.3
Female	199	13.2	938	14.3	18.1
<b>Race/Ethnicity</b>					
White non-Hispanic	549	20.3	2,190	20.1	25.0
Black non-Hispanic	3	9.8	138	22.0	28.9
Hispanic	3	9.7	27	10.4	23.0
Other	27	71.3	156	57.1	85.7
<b>Socioeconomic Status</b>					
SES 1 (low)	na	na	148	27.9	na
SES 2	na	na	488	26.0	na
SES 3	87	26.1	683	22.6	na
SES 4	305	23.0	669	20.4	na
SES 5 (high)	197	18.5	562	17.4	na

s: Data do not meet reporting criteria

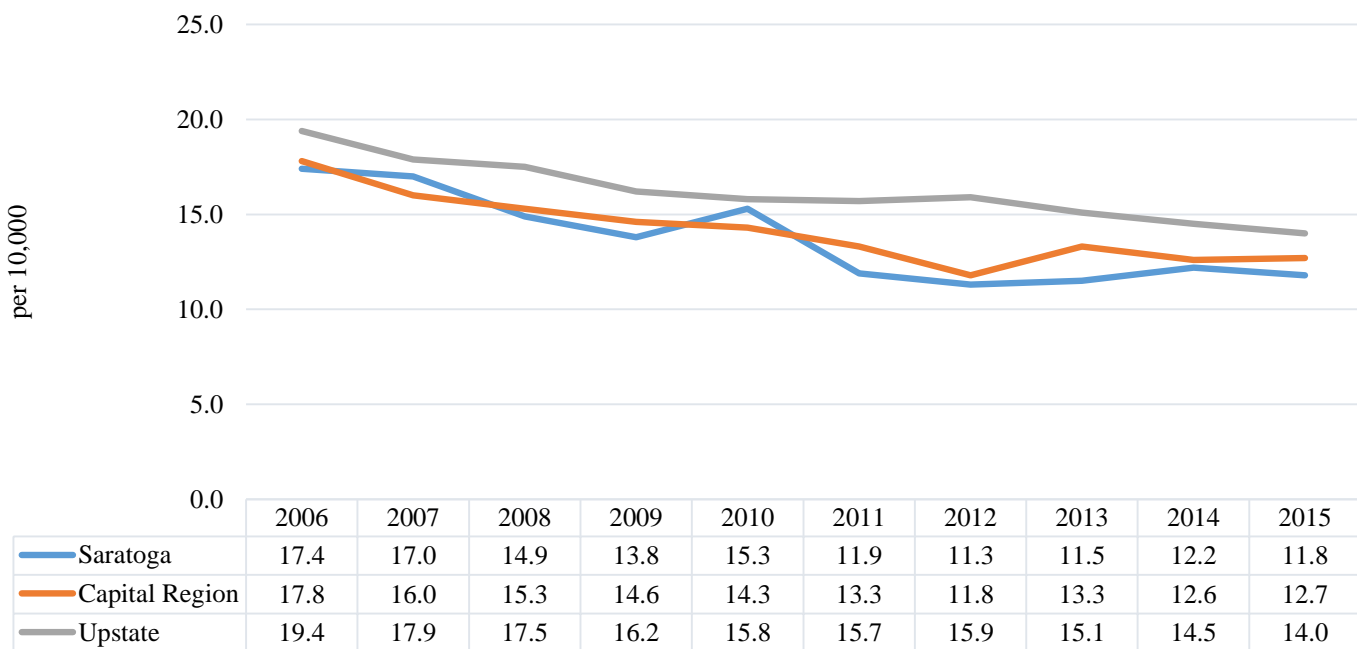
Red: fewer than 10 events in the numerator, therefore rate is unstable

## Heart Attack (Acute Myocardial Infarction)

**Age-adjusted Heart Attack Mortality per 100,000, Saratoga, Capital Region and NYS excl. NYC, 2006-2015 <sup>14</sup>**



**Age-adjusted Heart Attack Hospitalizations per 10,000, Saratoga, Capital Region and NYS excl. NYC, 2006-2015 <sup>14</sup>**



**Age-adjusted Heart Attack Mortality Rate per 100,000, and Hospitalization Rate per 10,000, Saratoga County, Capital Region and NYS excl. NYC, 2013-2015**

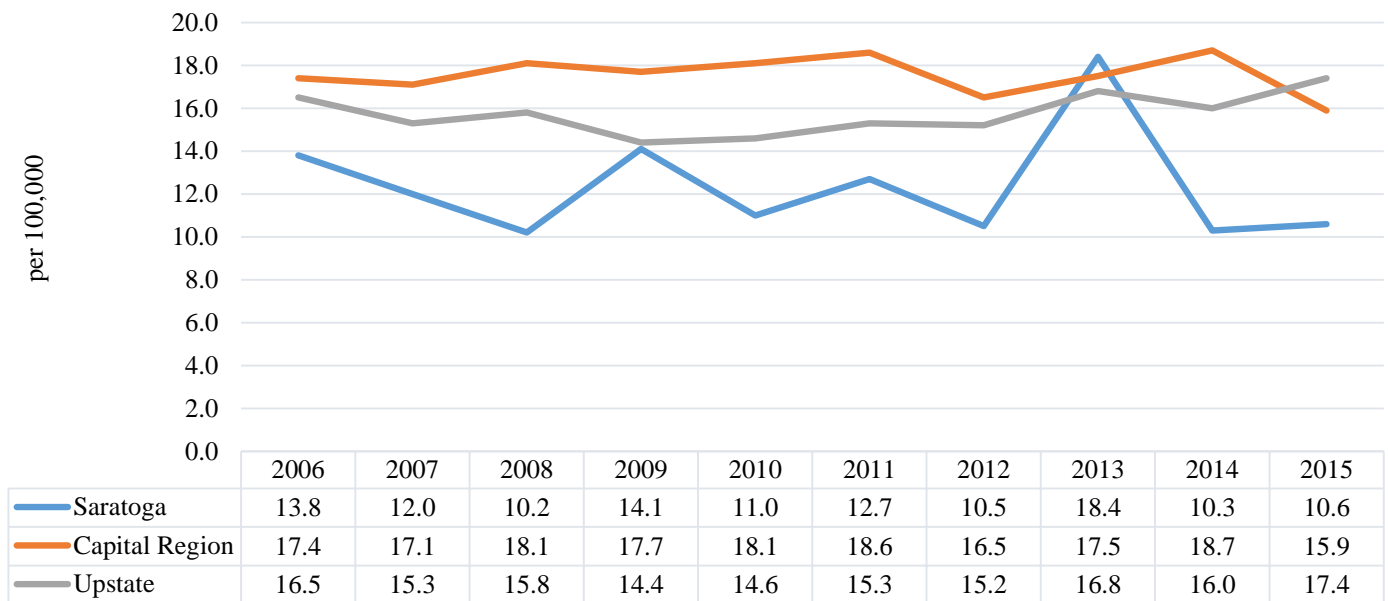
Heart Attack Mortality	Saratoga County		Capital Region		Upstate NY
	# (3 yr ave)	Rate	# (3 yr ave)	Rate	Rate
<b>Total</b>	57	21.2	285	22.7	31.7
<b>Age</b>					
25-44 years	s	s	3	1.5	2.1
45-64 years	7	9.3	46	15.6	20.2
65-74 years	10	53.8	49	59.8	85.2
75+ years	39	250.3	186	246.5	347.6
<b>Gender</b>					
Male	30	27.0	149	29.0	40.4
Female	27	16.4	135	17.6	24.7
<b>Race/Ethnicity</b>					
White non-Hispanic	56	21.6	263	22.6	32.5
Black non-Hispanic	s	s	15	26.8	33.4
Hispanic	s	s	3	19.3	18.5
Other	s	s	3	14.5	22.8
<b>Socioeconomic Status</b>					
SES 1 (low)	na	na	11	25.3	na
SES 2	na	na	63	31.7	na
SES 3	9	28.7	73	22.2	na
SES 4	31	23.4	76	21.9	na
SES 5 (high)	13	13.8	55	17.1	na
	<b>Saratoga County</b>		<b>Capital Region</b>		<b>Upstate NY</b>
<b>Heart Attack Hospitalizations</b>	# (3 yr ave)	Rate	# (3 yr ave)	Rate	Rate
<b>Total</b>	332	11.8	1,547	12.9	14.5
<b>Age</b>					
25-44 years	15	2.6	72	3.3	3.4
45-64 years	116	16.0	581	20.0	21.0
65-74 years	95	45.9	369	43.9	48.5
75+ years	107	74.1	523	75.3	93.4
<b>Gender</b>					
Male	210	16.2	933	17.1	19.4
Female	122	8.0	614	9.2	10.3
<b>Race/Ethnicity</b>					
White non-Hispanic	313	11.6	263	22.6	32.5
Black non-Hispanic	s	s	15	26.8	33.4
Hispanic	2	7.0	3	19.3	18.5
Other	16	43.0	3	14.5	22.8
<b>Socioeconomic Status</b>					
SES 1 (low)	na	na	94	18.5	na
SES 2	na	na	314	16.7	na
SES 3	47	13.8	424	14.0	na
SES 4	174	13.1	396	12.0	na
SES 5 (high)	116	11.0	347	10.8	na

s: Data do not meet reporting criteria

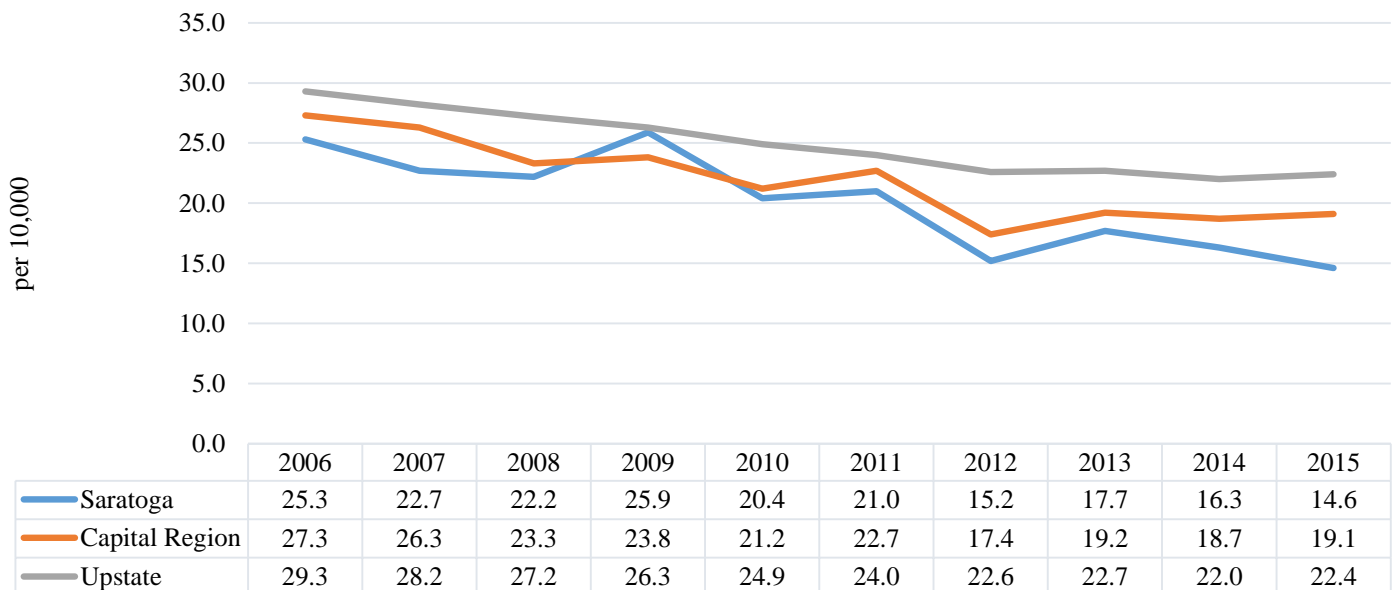
Red: fewer than 10 events in the numerator, therefore rate is unstable

## Congestive Heart Failure

**Age-adjusted Congestive Heart Failure Mortality per 100,000,  
Saratoga, Capital Region and NYS excl. NYC, 2006-2015 <sup>14</sup>**



**Age-adjusted Congestive Heart Failure Hospitalizations per 10,000,  
Saratoga, Capital Region and NYS excl. NYC, 2006-2015 <sup>14</sup>**





**Age-adjusted Congestive Heart Failure Mortality Rate per 100,000, and Hospitalization Rate per 10,000, Saratoga County, Capital Region and NYS excl. NYC, 2013-2015**

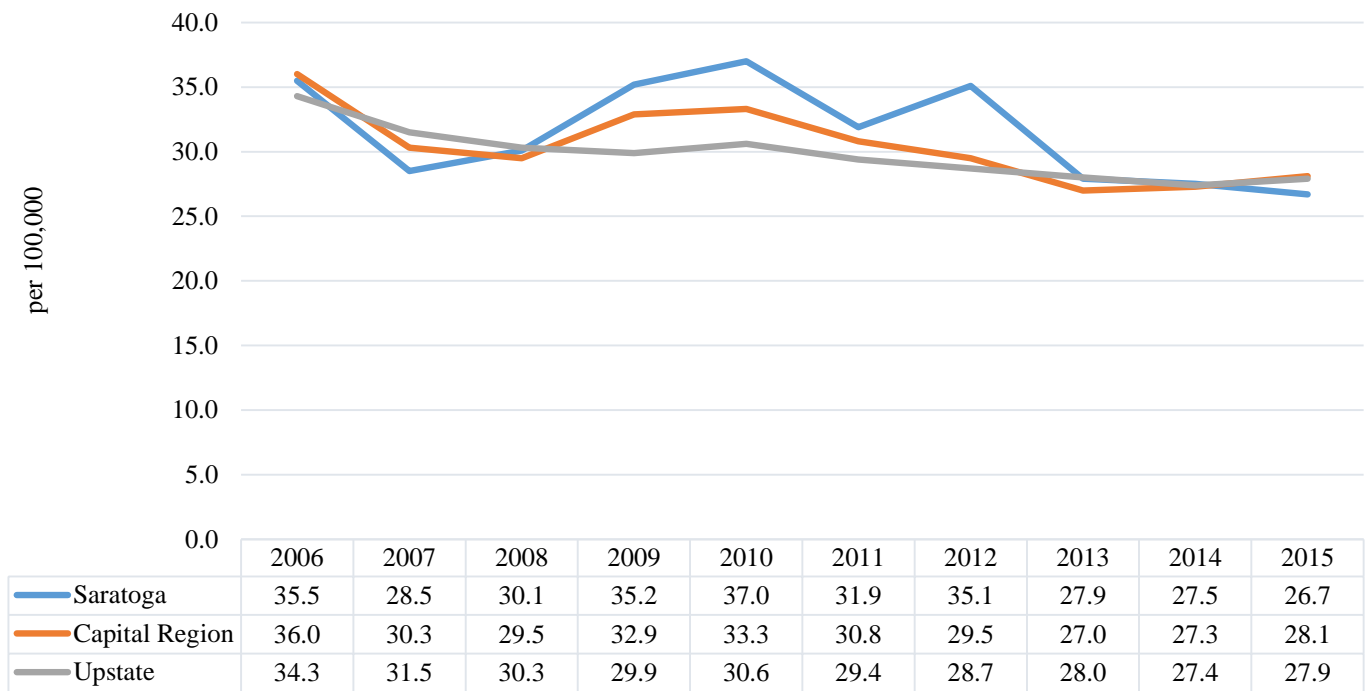
<b>Congestive Heart Failure Mortality</b>	<b>Saratoga County</b>		<b>Capital Region</b>		<b>Upstate NY</b>
	# (3 yr ave)	Rate	# (3 yr ave)	Rate	Rate
<b>Total</b>	36	13.0	227	17.4	16.7
<b>Age</b>					
25-44 years	0	0.0	s	s	0.4
45-64 years	s	s	7	2.2	3.6
65-74 years	2	9.3	21	27.0	23.2
75+ years	33	199.7	197	246.6	236.0
<b>Gender</b>					
Male	14	13.8	100	20.6	20.0
Female	22	12.8	127	15.4	14.5
<b>Race/Ethnicity</b>					
White non-Hispanic	35	13.1	215	17.5	17.1
Black non-Hispanic	s	s	7	13.9	15.2
Hispanic	s	s	3	18.5	9.0
Other	0	0.0	2	8.9	10.7
<b>Socioeconomic Status</b>					
SES 1 (low)	na	na	8	20.1	na
SES 2	na	na	39	17.6	na
SES 3	4	12.4	60	17.8	na
SES 4	19	13.3	59	16.5	na
SES 5 (high)	14	14.8	60	17.6	na
	<b>Saratoga County</b>		<b>Capital Region</b>		<b>Upstate NY</b>
<b>Congestive Heart Failure Hospitalizations</b>	# (3 yr ave)	Rate	# (3 yr ave)	Rate	Rate
<b>Total</b>	438	16.2	2,325	19.0	22.5
<b>Age</b>					
25-44 years	5	0.8	55	2.4	2.7
45-64 years	59	8.0	420	13.8	16.5
65-74 years	98	49.1	458	55.7	65.9
75+ years	277	180.9	1,388	190.9	223.0
<b>Gender</b>					
Male	220	19.1	1,130	22.0	27.1
Female	218	14.0	1,195	16.7	18.6
<b>Race/Ethnicity</b>					
White non-Hispanic	420	16.1	2,006	17.6	19.8
Black non-Hispanic	8	28.9	216	35.1	40.7
Hispanic	2	8.6	37	17.5	24.4
Other	7	21.7	66	30.4	51.3
<b>Socioeconomic Status</b>					
SES 1 (low)	na	na	172	35.3	na
SES 2	na	na	511	26.1	na
SES 3	77	23.6	674	21.6	na
SES 4	230	17.2	586	17.2	na
SES 5 (high)	148	15.2	494	15.4	na

s: Data do not meet reporting criteria

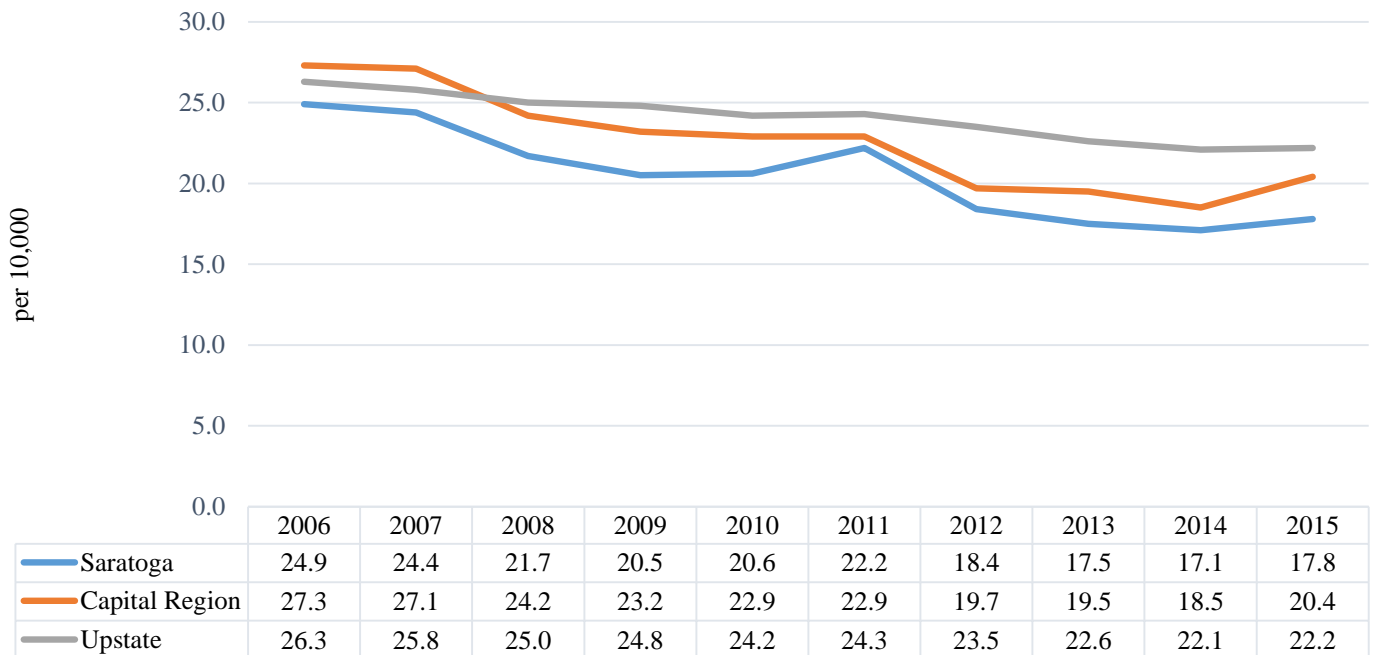
Red: fewer than 10 events in the numerator, therefore rate is unstable

## Cerebrovascular Disease (Stroke)

**Age-adjusted Cerebrovascular (Stroke) Mortality per 100,000, Saratoga, Capital Region and NYS excl. NYC, 2006-2015 <sup>14</sup>**



**Age-adjusted Cerebrovascular (Stroke) Hospitalizations per 10,000, Saratoga, Capital Region and NYS excl. NYC, 2006-2015 <sup>14</sup>**



**Age-adjusted Cerebrovascular Mortality Rate per 100,000, and Hospitalization Rate per 10,000, Saratoga County, Capital Region and NYS excl. NYC, 2013-2015**

	Saratoga County		Capital Region		Upstate NY
<b>Cerebrovascular Mortality</b>	# (3 yr ave)	Rate	# (3 yr ave)	Rate	Rate
<b>Total</b>	74	27.3	345	27.5	27.8
<b>Age</b>					
25-44 years	s	s	4	2.0	2.0
45-64 years	6	7.4	34	11.1	11.2
65-74 years	10	49.1	49	61.1	57.8
75+ years	58	366.3	256	335.6	344.4
<b>Gender</b>					
Male	32	29.9	136	27.5	28.0
Female	42	25.4	209	27.0	27.1
<b>Race/Ethnicity</b>					
White non-Hispanic	71	27.1	321	27.3	27.5
Black non-Hispanic	s	s	15	26.2	33.1
Hispanic	s	s	4	22.9	21.2
Other	s	s	5	26.1	25.5
<b>Socioeconomic Status</b>					
SES 1 (low)	na	na	15	32.8	na
SES 2	na	na	63	30.3	na
SES 3	9	30.4	91	28.4	na
SES 4	40	29.6	94	27.1	na
SES 5 (high)	24	24.3	79	24.2	na
	Saratoga County		Capital Region		Upstate NY
<b>Cerebrovascular Hospitalizations</b>	# (3 yr ave)	Rate	# (3 yr ave)	Rate	Rate
<b>Total</b>	478	17.5	2,344	19.4	22.3
<b>Age</b>					
25-44 years	14	2.4	79	3.5	4.7
45-64 years	114	15.8	622	21.0	23.7
65-74 years	123	60.9	551	66.1	75.7
75+ years	225	150.2	1,082	152.6	173.2
<b>Gender</b>					
Male	244	20.2	1,137	21.6	24.4
Female	234	15.3	1,208	17.6	20.4
<b>Race/Ethnicity</b>					
White non-Hispanic	447	17.0	2,023	18.2	20.1
Black non-Hispanic	7	21.4	171	28.7	35.0
Hispanic	2	4.7	30	12.0	22.5
Other	22	63.1	120	48.2	55.8
<b>Socioeconomic Status</b>					
SES 1 (low)	na	na	146	29.4	na
SES 2	na	na	454	23.8	na
SES 3	66	20.1	635	20.7	na
SES 4	243	18.3	628	18.8	na
SES 5 (high)	178	17.7	555	17.4	na

s: Data do not meet reporting criteria

Red: fewer than 10 events in the numerator, therefore rate is unstable

## *Data Summary:*

### **Coronary Heart Disease (CHD)**

- About 270 Schenectady county residents died from CHD and 490 were hospitalized each year.
- The Schenectady's age-adjusted CHD mortality rate was similar and hospitalization rate was slightly lower than Upstate and decreased 15% and 50% respectively over the last decade.
- Schenectady males had 80% higher age-adjusted CHD mortality and hospitalization rates compared to female residents.
- Age-adjusted CHD mortality and hospitalization rates increased with age.
- Black non-Hispanic residents had about 30% higher age-adjusted CHD mortality and hospitalization rates compared to white non-Hispanic residents. Hispanic residents had 10% lower CHD mortality rates and 50% lower hospitalization rates than their white-non-Hispanic counterparts.
- Residents in low socioeconomic neighborhoods in the Schenectady (SES 1) had 110% higher age-adjusted CHD mortality and 80% higher hospitalization rates compared to residents from high socioeconomic areas (SES 5).

### **Heart Attack (acute myocardial infarction)**

- An average of 55 Schenectady county residents died from heart attack and 235 were hospitalized each year.
- Schenectady's age-adjusted heart attack mortality was 20% lower, but hospitalization rates were 15% higher than Upstate and decreased about 15% and 30% respectively each over the last decade.
- Schenectady males had 65% higher age-adjusted heart attack mortality and 70% higher hospitalization rates compared to female residents.
- Age-adjusted heart attack mortality and hospitalization rates increased with age.
- Black non-Hispanic residents had a 17% higher age-adjusted heart attack hospitalization rates compared to white non-Hispanic residents. Hispanic residents had 50% lower heart attack hospitalization rates than their white-non-Hispanic counterparts.
- Residents in low socioeconomic neighborhoods in Schenectady (SES 1) had a 125% higher age-adjusted heart attack mortality and 80% higher heart attack hospitalization rates compared to residents from high socioeconomic areas (SES 5).

## **Congestive Health Failure (CHF)**

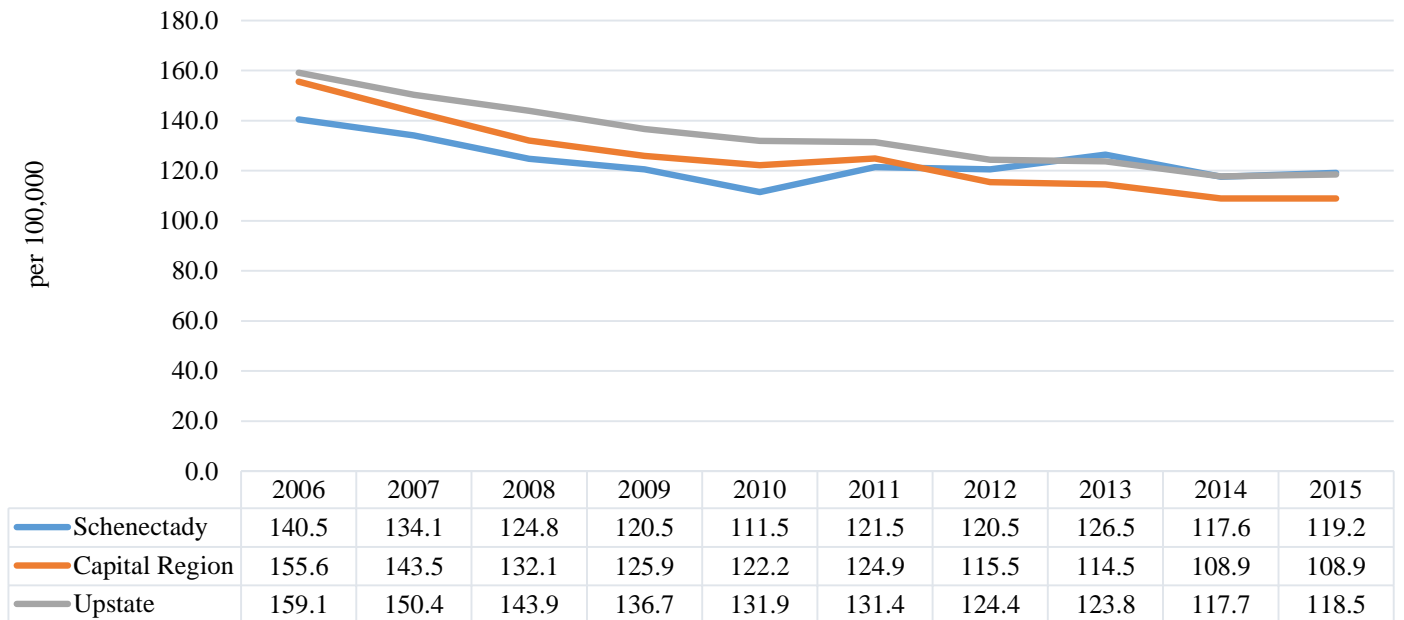
- An average of 45 Schenectady county residents died from CHF and 450 were hospitalized each year.
- Schenectady's age-adjusted CHF mortality was higher (16%), but hospitalization rates were slightly lower (2%) than Upstate.
- Schenectady's age-adjusted CHF mortality and hospitalization trends both decreased 35% over the last decade.
- Schenectady males had 30% higher age-adjusted CHF mortality and hospitalization rates compared to female residents.
- Age-adjusted CHF mortality and hospitalization rates increased with age.
- Black non-Hispanic residents had an 85% higher CHF hospitalization rate compared to white non-Hispanic residents. Hispanic residents had a 28% higher CHF hospitalization rate than their white-non-Hispanic counterparts.
- There were no socioeconomic trend in age-adjusted CHF mortality, but a socioeconomic trend for stroke CHF hospitalization rates across Schenectady neighborhoods (SES 1 had 140% higher rate than SES 5).

## **Cerebrovascular Disease (Stroke)**

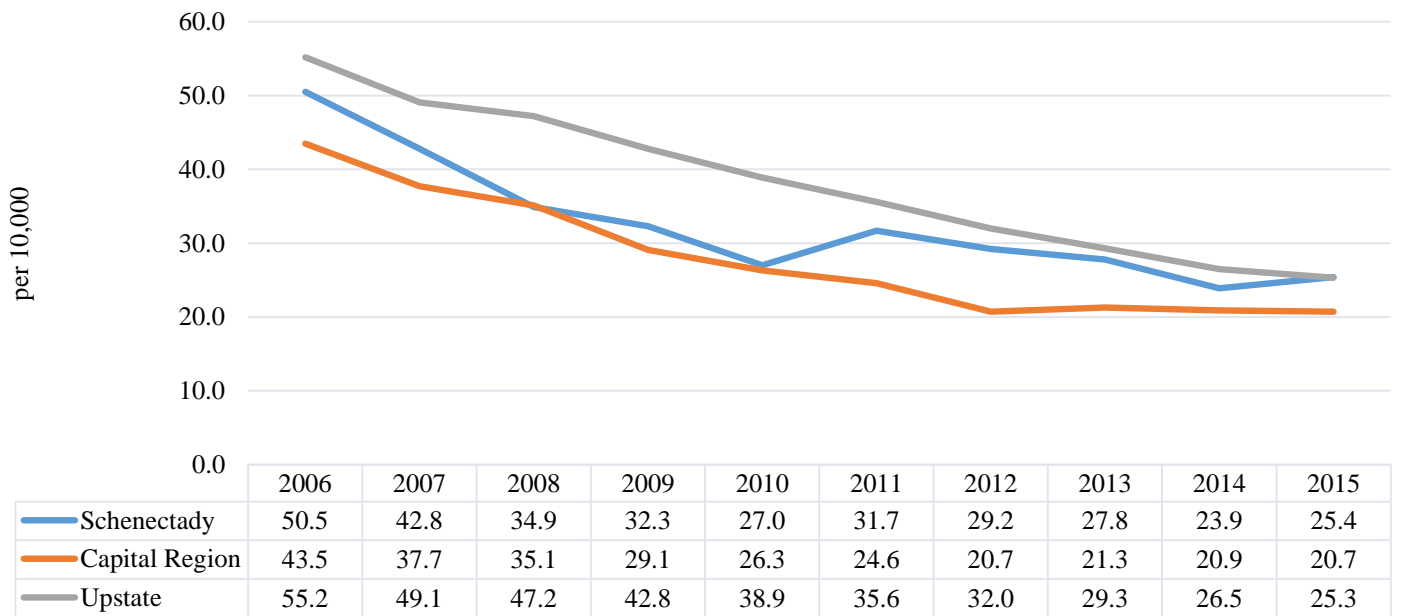
- An average of 70 Schenectady county residents died from stroke and 470 were hospitalized each year.
- Schenectady's age-adjusted stroke mortality rate was 12% higher and stroke hospitalization rate 6% higher than Upstate.
- Schenectady's age-adjusted stroke mortality rate and hospitalization rate trends both showed about a 20% decrease over the last decade.
- Schenectady males had only a 4% age-adjusted stroke mortality rate, and a 20% higher stroke hospitalization rate compared to female residents.
- Age-adjusted stroke mortality and hospitalization rates increased with age.
- Black non-Hispanic residents had an almost 60% higher hospitalization rate compared to white non-Hispanic residents. Hispanic residents had a 30% lower stroke hospitalization rates than their white-non-Hispanic counterparts.
- Residents in the low socioeconomic neighborhoods in the Schenectady (SES 1) had a 50% higher age-adjusted stroke mortality and a 70% higher stroke hospitalization rate compared to residents from high socioeconomic areas (SES 5).

## Coronary Heart Disease

**Age-adjusted Coronary Heart Disease Mortality per 100,000, Schenectady, Capital Region and NYS excl. NYC, 2006-2015 <sup>14</sup>**



**Age-adjusted Coronary Heart Disease Hospitalizations per 10,000, Schenectady, Capital Region and NYS excl. NYC, 2006-2015 <sup>14</sup>**



**Age-adjusted Coronary Heart Disease Mortality Rate per 100,000, and Hospitalization Rate per 10,000, Schenectady County, Capital Region and NYS excl. NYC, 2013-2015**

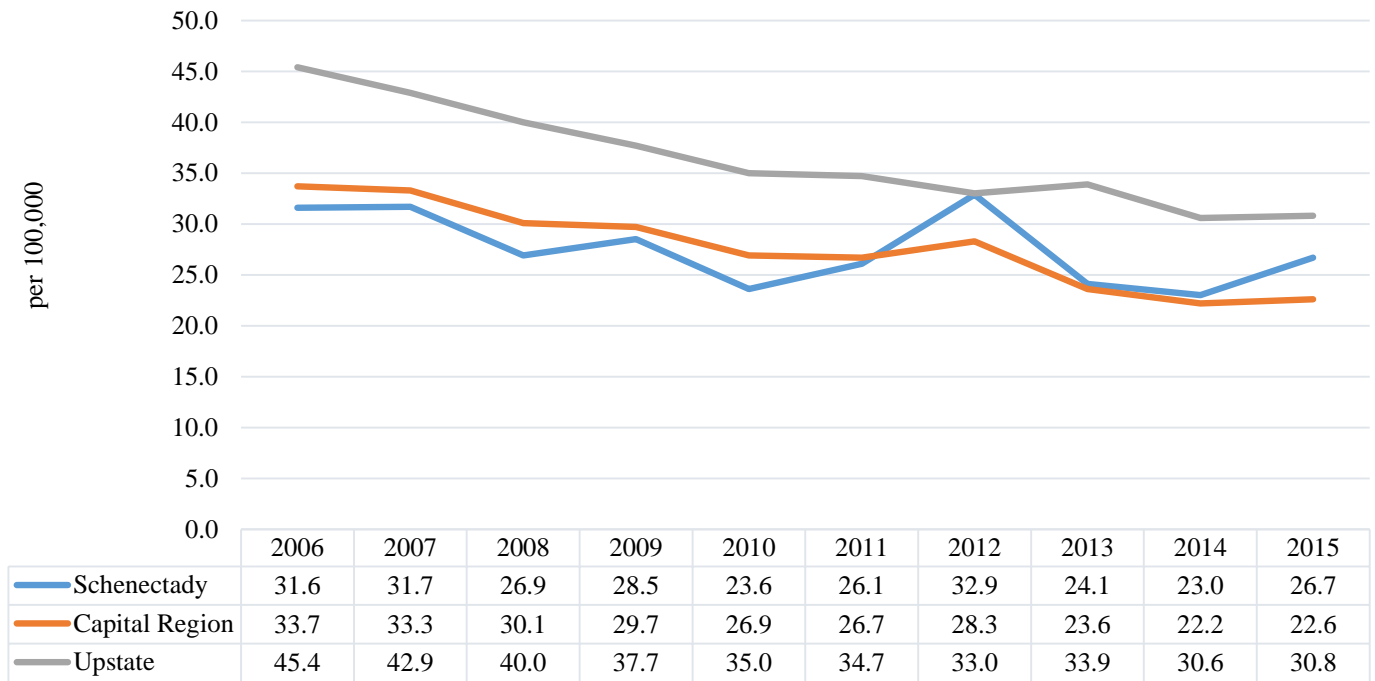
<b>Coronary Heart Disease Mortality</b>	<b>Schenectady County</b>		<b>Capital Region</b>		<b>Upstate NY</b>
	# (3 yr ave)	Rate	# (3 yr ave)	Rate	Rate
<b>Total</b>	266	121.2	1,410	110.7	120.0
<b>Age</b>					
25-44 years	4	10.8	15	6.6	7.8
45-64 years	41	85.4	198	65.2	69.6
65-74 years	36	294.5	220	264.9	276.0
75+ years	185	1318.5	978	1,271.1	1,390.1
<b>Gender</b>					
Male	137	160.4	729	142.3	154.3
Female	128	90.8	681	85.8	93.3
<b>Race/Ethnicity</b>					
White non-Hispanic	239	118.3	1,315	110.8	120.6
Black non-Hispanic	14	149.9	62	118.8	140.9
Hispanic	4	105.0	14	76.3	81.8
Other	8	152.5	19	89.4	93.1
<b>Socioeconomic Status</b>					
SES 1 (low)	39	166.4	72	156.2	na
SES 2	50	168.6	307	147.6	na
SES 3	97	118.0	362	109.2	na
SES 4	55	100.9	358	101.4	na
SES 5 (high)	40	78.7	291	89.2	na
	<b>Schenectady County</b>		<b>Capital Region</b>		<b>Upstate NY</b>
<b>Coronary Heart Disease Hospitalizations</b>	# (3 yr ave)	Rate	# (3 yr ave)	Rate	Rate
<b>Total</b>	491	25.7	2,512	20.9	27.0
<b>Age</b>					
25-44 years	28	7.9	115	5.3	5.8
45-64 years	199	43.4	990	33.9	41.6
65-74 years	98	79.3	643	76.2	99.7
75+ years	165	139.7	760	112.3	156.1
<b>Gender</b>					
Male	291	33.8	1,574	28.5	37.3
Female	201	18.7	938	14.3	18.1
<b>Race/Ethnicity</b>					
White non-Hispanic	406	24.6	2,190	20.1	25.0
Black non-Hispanic	37	31.8	138	22.0	28.9
Hispanic	6	11.6	27	10.4	23.0
Other	40	59.4	156	57.1	85.7
<b>Socioeconomic Status</b>					
SES 1 (low)	73	29.1	148	27.9	na
SES 2	74	30.5	488	26.0	na
SES 3	185	25.4	683	22.6	na
SES 4	91	20.5	669	20.4	na
SES 5 (high)	75	16.4	562	17.4	na

s: Data do not meet reporting criteria

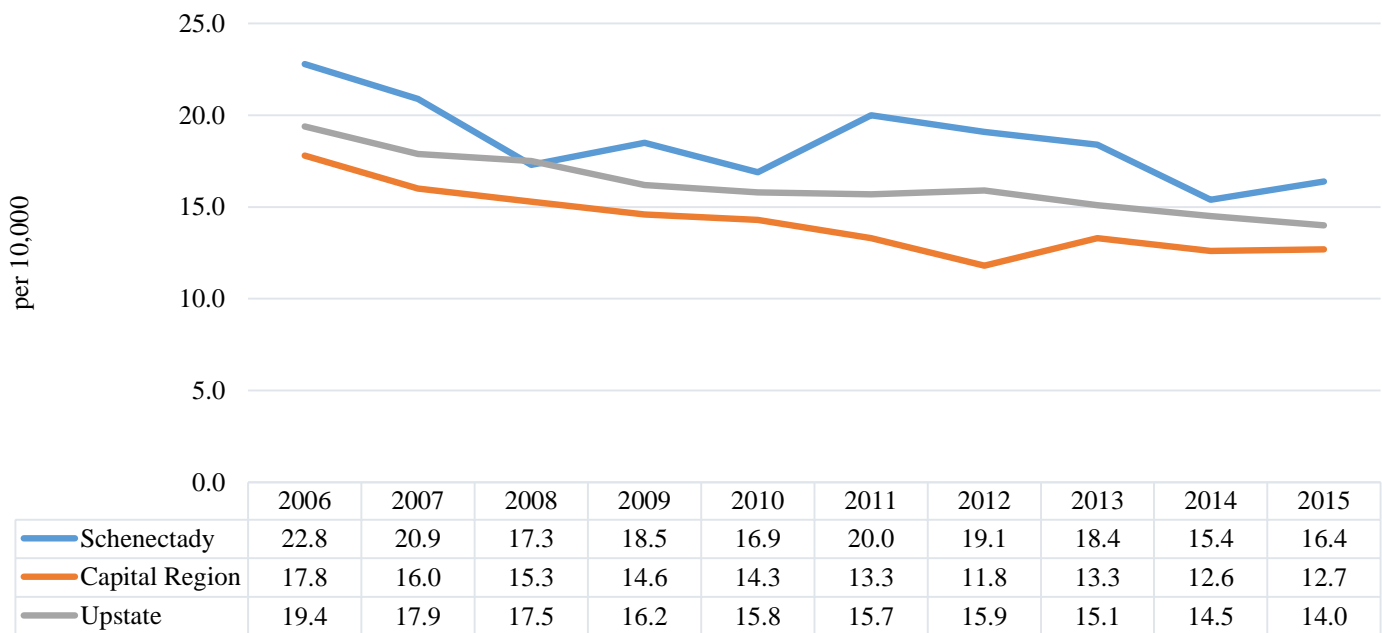
Red: fewer than 10 events in the numerator, therefore rate is unstable

## Heart Attack (Acute Myocardial Infarction)

**Age-adjusted Heart Attack Mortality per 100,000, Schenectady, Capital Region and NYS excl. NYC, 2006-2015 <sup>14</sup>**



**Age-adjusted Heart Attack Hospitalizations per 10,000, Schenectady, Capital Region and NYS excl. NYC, 2006-2015 <sup>14</sup>**





**Age-adjusted Heart Attack Mortality Rate per 100,000, and Hospitalization Rate per 10,000,  
Schenectady County, Capital Region and NYS excl. NYC, 2013-2015**

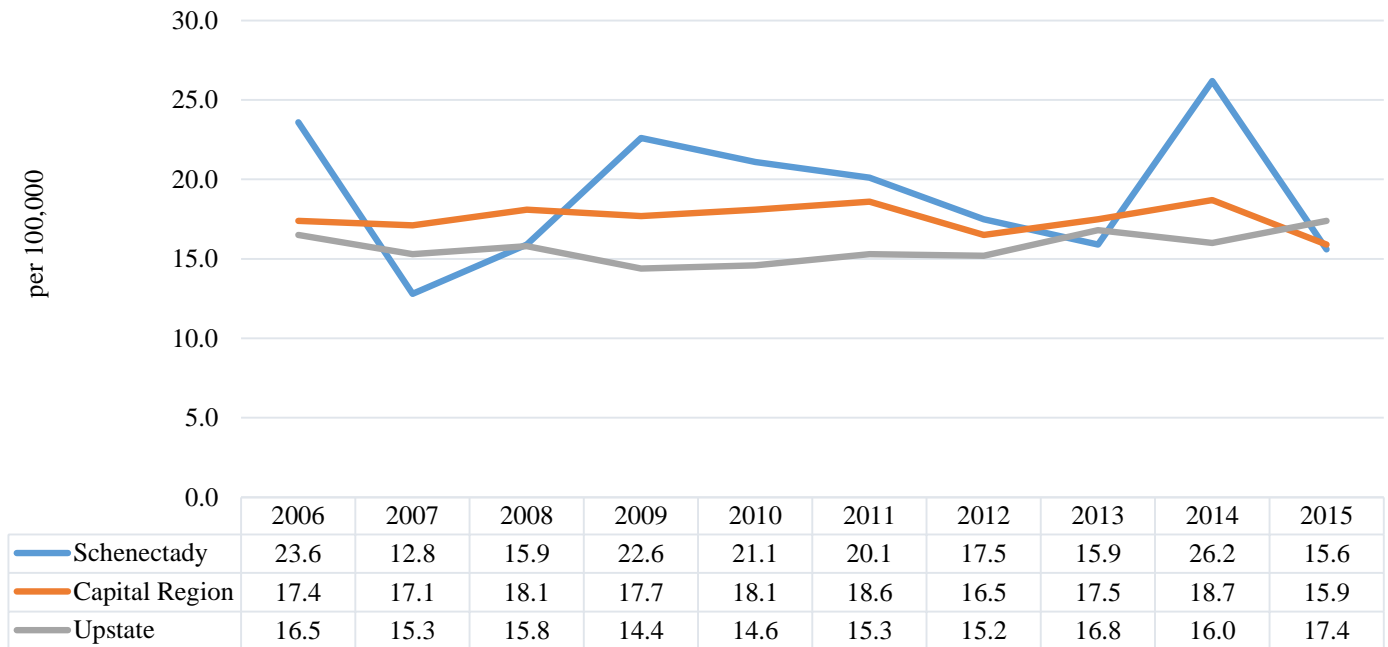
Heart Attack Mortality	Schenectady County		Capital Region		Upstate NY
	# (3 yr ave)	Rate	# (3 yr ave)	Rate	Rate
<b>Total</b>	53	24.6	285	22.7	31.7
<b>Age</b>					
25-44 years	s	s	3	1.5	2.1
45-64 years	9	18.4	46	15.6	20.2
65-74 years	6	50.4	49	59.8	85.2
75+ years	37	271.3	186	246.5	347.6
<b>Gender</b>					
Male	26	31.2	149	29.0	40.4
Female	27	18.8	135	17.6	24.7
<b>Race/Ethnicity</b>					
White non-Hispanic	49	24.8	263	22.6	32.5
Black non-Hispanic	2	20.6	15	26.8	33.4
Hispanic	s	s	3	19.3	18.5
Other	s	s	3	14.5	22.8
<b>Socioeconomic Status</b>					
SES 1 (low)	7	30.6	11	25.3	na
SES 2	8	29.8	63	31.7	na
SES 3	24	29.7	73	22.2	na
SES 4	12	21.1	76	21.9	na
SES 5 (high)	7	13.5	55	17.1	na
	Schenectady County		Capital Region		Upstate NY
<b>Heart Attack Hospitalizations</b>	# (3 yr ave)	Rate	# (3 yr ave)	Rate	Rate
<b>Total</b>	323	16.8	1,547	12.9	14.5
<b>Age</b>					
25-44 years	19	5.3	72	3.3	3.4
45-64 years	122	26.7	581	20.0	21.0
65-74 years	59	47.3	369	43.9	48.5
75+ years	123	101.1	523	75.3	93.4
<b>Gender</b>					
Male	184	21.6	933	17.1	19.4
Female	139	12.6	614	9.2	10.3
<b>Race/Ethnicity</b>					
White non-Hispanic	275	16.3	263	22.6	32.5
Black non-Hispanic	22	19.0	15	26.8	33.4
Hispanic	4	8.0	3	19.3	18.5
Other	23	35.3	3	14.5	22.8
<b>Socioeconomic Status</b>					
SES 1 (low)	48	19.4	94	18.5	na
SES 2	50	19.9	314	16.7	na
SES 3	119	16.3	424	14.0	na
SES 4	59	13.0	396	12.0	na
SES 5 (high)	49	10.8	347	10.8	na

s: Data do not meet reporting criteria

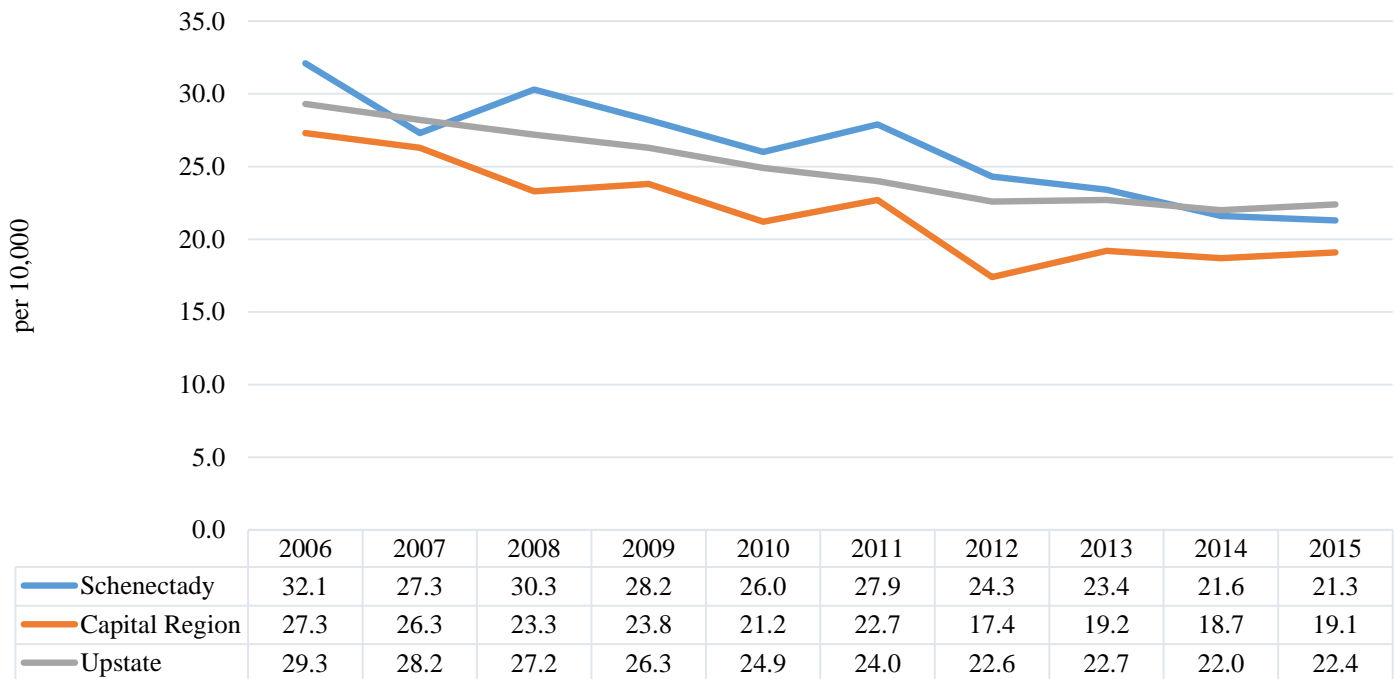
Red: fewer than 10 events in the numerator, therefore rate is unstable

## Congestive Heart Failure

**Age-adjusted Congestive Heart Failure Mortality per 100,000, Schenectady, Capital Region and NYS excl. NYC, 2006-2015 <sup>14</sup>**



**Age-adjusted Congestive Heart Failure Hospitalizations per 10,000, Schenectady, Capital Region and NYS excl. NYC, 2006-2015 <sup>14</sup>**



**Age-adjusted Congestive Heart Failure Mortality Rate per 100,000, and Hospitalization Rate per 10,000, Schenectady County, Capital Region and NYS excl. NYC, 2013-2015**

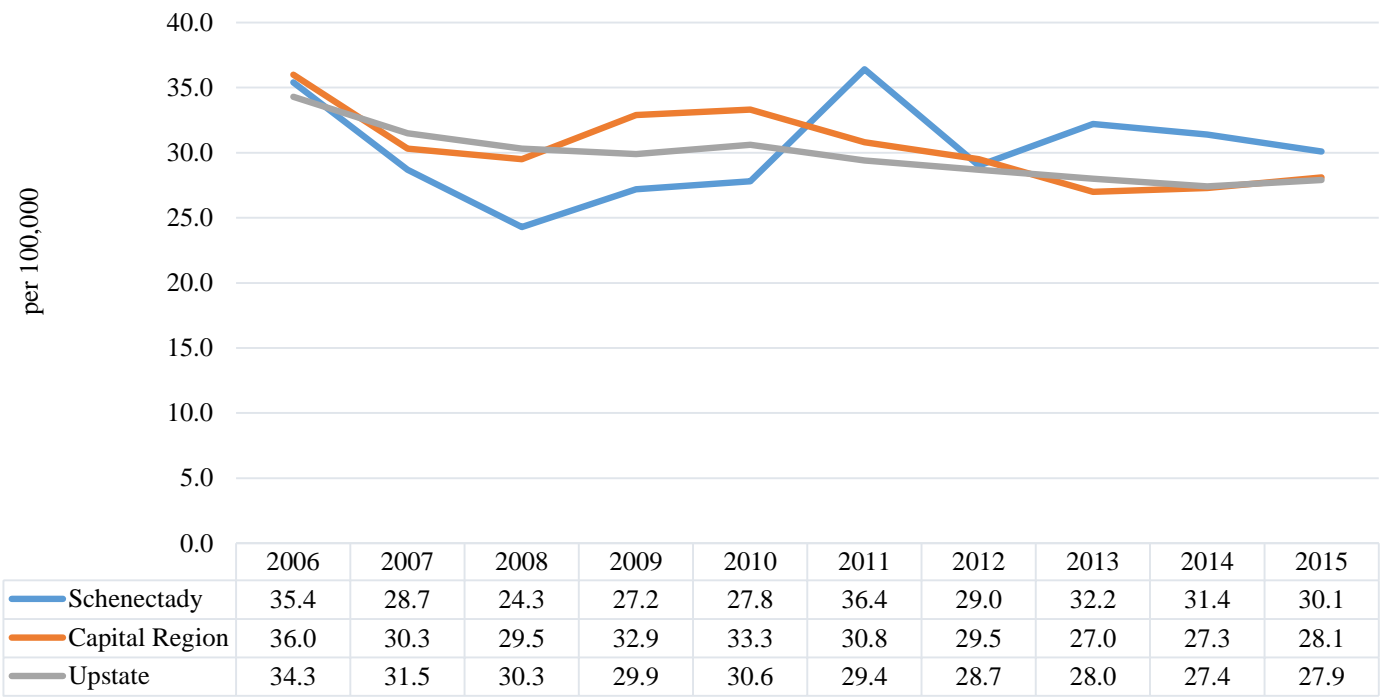
<b>Congestive Heart Failure Mortality</b>	<b>Schenectady County</b>		<b>Capital Region</b>		<b>Upstate NY</b>
	# (3 yr ave)	Rate	# (3 yr ave)	Rate	Rate
<b>Total</b>	45	19.3	227	17.4	16.7
<b>Age</b>					
25-44 years	0	0.0	s	s	0.4
45-64 years	2	4.0	7	2.2	3.6
65-74 years	4	36.2	21	27.0	23.2
75+ years	39	265.9	197	246.6	236.0
<b>Gender</b>					
Male	20	22.6	100	20.6	20.0
Female	25	17.3	127	15.4	14.5
<b>Race/Ethnicity</b>					
White non-Hispanic	43	19.7	215	17.5	17.1
Black non-Hispanic	s	s	7	13.9	15.2
Hispanic	s	s	3	18.5	9.0
Other	0	0.0	2	8.9	10.7
<b>Socioeconomic Status</b>					
SES 1 (low)	3	15.3	8	20.1	na
SES 2	9	28.8	39	17.6	na
SES 3	14	16.7	60	17.8	na
SES 4	13	20.3	59	16.5	na
SES 5 (high)	8	13.4	60	17.6	na
	<b>Schenectady County</b>		<b>Capital Region</b>		<b>Upstate NY</b>
<b>Congestive Heart Failure Hospitalizations</b>	# (3 yr ave)	Rate	# (3 yr ave)	Rate	Rate
<b>Total</b>	452	22.1	2,325	19.0	22.5
<b>Age</b>					
25-44 years	16	4.1	55	2.4	2.7
45-64 years	79	16.6	420	13.8	16.5
65-74 years	82	66.5	458	55.7	65.9
75+ years	273	208.9	1,388	190.9	223.0
<b>Gender</b>					
Male	216	25.4	1,130	22.0	27.1
Female	235	19.4	1,195	16.7	18.6
<b>Race/Ethnicity</b>					
White non-Hispanic	380	20.0	2,006	17.6	19.8
Black non-Hispanic	46	36.9	216	35.1	40.7
Hispanic	11	25.6	37	17.5	24.4
Other	15	28.4	66	30.4	51.3
<b>Socioeconomic Status</b>					
SES 1 (low)	69	30.2	172	35.3	na
SES 2	63	25.0	511	26.1	na
SES 3	171	22.6	674	21.6	na
SES 4	86	15.7	586	17.2	na
SES 5 (high)	65	12.6	494	15.4	na

s: Data do not meet reporting criteria

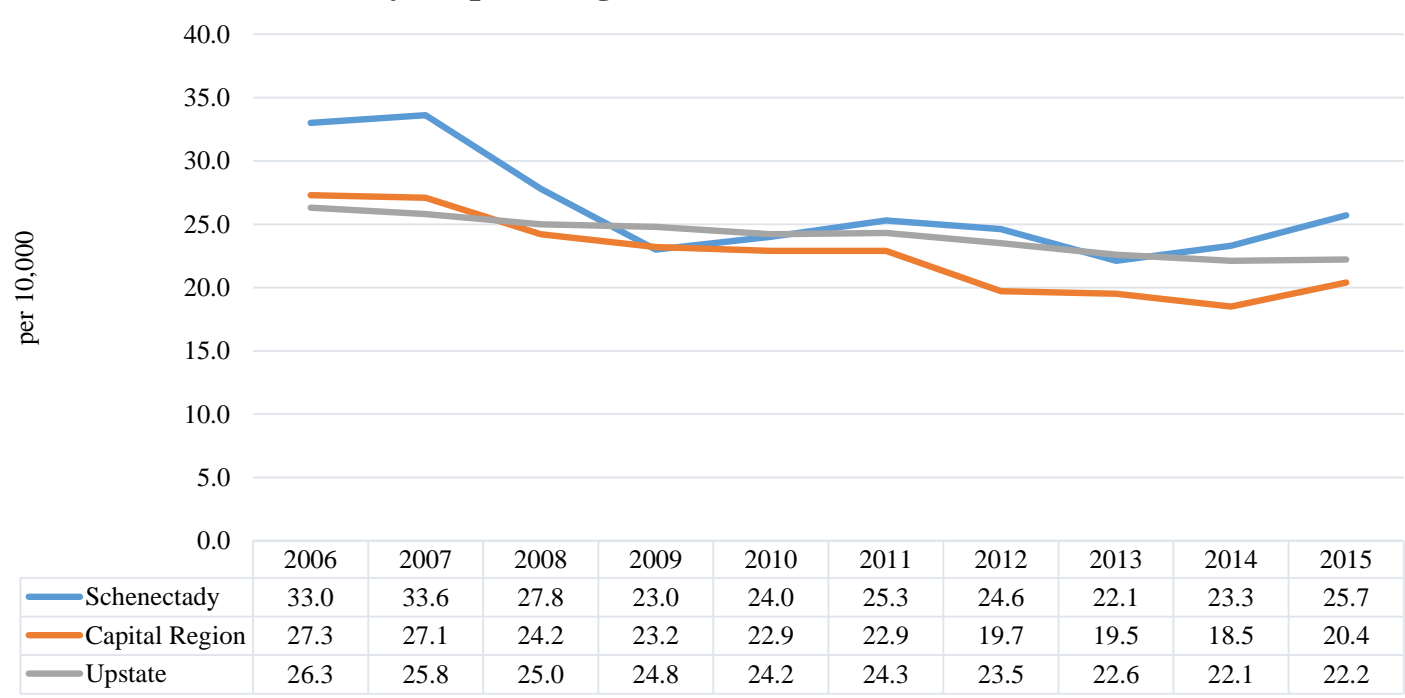
Red: fewer than 10 events in the numerator, therefore rate is unstable

## Cerebrovascular (Stroke)

**Age-adjusted Cerebrovascular (Stroke) Mortality per 100,000, Schenectady, Capital Region and NYS excl. NYC, 2006-2015 <sup>14</sup>**



**Age-adjusted Cerebrovascular (Stroke) Hospitalizations per 10,000, Schenectady, Capital Region and NYS excl. NYC, 2006-2015 <sup>14</sup>**



**Age-adjusted Cerebrovascular Mortality Rate per 100,000, and Hospitalization Rate per 10,000, Schenectady County, Capital Region and NYS excl. NYC, 2013-2015**

	Schenectady County		Capital Region		Upstate NY
<b>Cerebrovascular Mortality</b>	# (3 yr ave)	Rate	# (3 yr ave)	Rate	Rate
<b>Total</b>	67	31.2	345	27.5	27.8
<b>Age</b>					
25-44 years	s	s	4	2.0	2.0
45-64 years	6	11.2	34	11.1	11.2
65-74 years	7	56.2	49	61.1	57.8
75+ years	53	392.6	256	335.6	344.4
<b>Gender</b>					
Male	26	31.9	136	27.5	28.0
Female	42	30.6	209	27.0	27.1
<b>Race/Ethnicity</b>					
White non-Hispanic	63	31.3	321	27.3	27.5
Black non-Hispanic	3	21.2	15	26.2	33.1
Hispanic	s	s	4	22.9	21.2
Other	s	s	5	26.1	25.5
<b>Socioeconomic Status</b>					
SES 1 (low)	7	33.6	15	32.8	na
SES 2	11	39.0	63	30.3	na
SES 3	24	30.4	91	28.4	na
SES 4	18	33.6	94	27.1	na
SES 5 (high)	12	22.2	79	24.2	na
	Schenectady County		Capital Region		Upstate NY
<b>Cerebrovascular Hospitalizations</b>	# (3 yr ave)	Rate	# (3 yr ave)	Rate	Rate
<b>Total</b>	468	23.6	2,344	19.4	22.3
<b>Age</b>					
25-44 years	17	4.6	79	3.5	4.7
45-64 years	126	26.9	622	21.0	23.7
65-74 years	97	78.2	551	66.1	75.7
75+ years	226	183.2	1,082	152.6	173.2
<b>Gender</b>					
Male	221	26.3	1,137	21.6	24.4
Female	247	21.8	1,208	17.6	20.4
<b>Race/Ethnicity</b>					
White non-Hispanic	192	21.9	2,023	18.2	20.1
Black non-Hispanic	40	34.4	171	28.7	35.0
Hispanic	8	15.5	30	12.0	22.5
Other	28	44.7	120	48.2	55.8
<b>Socioeconomic Status</b>					
SES 1 (low)	73	30.7	146	29.4	na
SES 2	60	23.7	454	23.8	na
SES 3	159	20.8	635	20.7	na
SES 4	90	18.8	628	18.8	na
SES 5 (high)	86	18.0	555	17.4	na

s: Data do not meet reporting criteria

Red: fewer than 10 events in the numerator, therefore rate is unstable