

# eBRFSS 2013-2014 Health Indicators: Schenectady

General Description .....	2
Improve Health Status and Reduce Health Disparities .....	3
Percentage of adults who did not receive medical care because of cost .....	3
Percentage of adults who have a regular health care provider .....	4
Percentage of adults who had a dentist visit within the past year .....	5
Percentage of adults living with a disability.....	6
Percentage of adults aged 18-64 years with healthcare coverage .....	7
Percentage of adults aged 18-64 years who saw a doctor for a routine checkup within the last year .....	8
Percentage of adults experiencing housing insecurity in the past 12 months.....	9
Percentage of adults experiencing food insecurity in the past 12 months.....	10
Percentage of adults with poor self-reported health .....	11
Percentage of adults who report 14 or more days of poor physical health.....	12
Prevent Chronic Diseases .....	13
Percentage of adults who are obese .....	13
Percentage of adults with an annual household income less than \$25,000 who are obese .....	14
Percentage of adults living with a disability who are obese .....	15
Percentage of adults overweight or obese .....	16
Percentage of adults who participated in leisure time physical activity in the past 30 days.....	17
Percentage of adults who consume one or more sugary drinks daily .....	18
Percentage of adults who consume fast-food three or more times per week .....	19
Percentage of adults with physician diagnosed diabetes .....	20
Percentage of adults who are current smokers .....	21
Percentage of adults with annual household income less than \$25,000 who are current smokers .....	22
Percentage of adults aged 18-24 years who are current smokers.....	23
Percentage of women aged 50-74 years receiving breast cancer screening based on recent guidelines .....	24
Percentage of women aged 50-74 years with annual household income of less than \$25,000 receiving breast cancer screening based on recent guidelines.....	25
Percentage of women aged 21-65 years receiving cervical cancer screening based on recent guidelines .....	26
Percentage of women aged 21-65 years with annual household income of less than \$25,000 receiving cervical cancer screening based on recent guidelines.....	27
Percentage of adults aged 50-75 years receiving colorectal cancer screening based on recent guidelines.....	28
Percentage of adults aged 50-75 years with annual household income less than \$25,000 receiving colorectal cancer screening based on recent guidelines.....	29
Percentage of adults who had a test for high blood sugar or diabetes within the past three years .....	30
Percentage of adults with physician-diagnosed prediabetes .....	31
Percentage of adults with physician-diagnosed high blood pressure.....	32
Percentage of adults with diagnosed high blood pressure taking high blood pressure medication .....	33
Percentage of adults with current asthma .....	34
Percent of adults with cholesterol checked.....	35
Percentage of adults 18 years and older with elevated cholesterol.....	36
Percentage of adults who have taken a course or class to learn how to manage their chronic disease or condition .....	37
Percentage of adults with arthritis .....	38
Promote a Healthy and Safe Environment .....	39
Percentage of adults who consider their neighborhood suitable for walking and physical activity.....	39
Percentage of adults aged 65+ years with at least one fall in the past 12 months.....	40
Among adults aged 65+ years with at least one fall in the past 12 months, percent that resulted in injury.....	41
Prevent HIV/STDs, Vaccine Preventable Diseases and Healthcare-Associated Infections.....	42
Percentage of adults aged 47-68 years reporting ever tested for Hepatitis C (HCV).....	42
Percentage of adults aged 18+ years with flu immunization in the past year .....	43
Percentage of adults aged 65+ years with flu immunization in the past year .....	44
Percentage of adults aged 65+ years with pneumococcal immunization.....	45
Promote Healthy Women, Infants, and Children .....	46
Percentage of women aged 18-44 years who had dental visit within the last year .....	46
Women aged 18-44 years who saw a doctor for a routine checkup within the last year.....	47
Percentage of women aged 18-64 years with health care coverage .....	48
Percentage of women aged 18-44 years whose health care provider discussed planning a healthy pregnancy .....	49
Promote Mental Health and Prevention Substance Abuse .....	50
Percentage of adults with poor mental health for 14 or more days in the last month .....	50
Percentage of adult binge drinking during the past month .....	51
Percentage of cigarette smoking among adults who report poor mental health.....	52

## General Description

The New York State Expanded Behavioral Risk Factor Surveillance System 2013-2014 (2014 eBRFSS) was design to supplement the Center for Disease Control and Prevention (CDC) Behavioral Risk Factor Surveillance System (BRFSS), which is conducted annually in New York State. The purpose of the 2014 eBRFSS was to produce local information on key public health issues. Data for the project were collected from April 15, 2013 to May 10, 2014. The 2014 eBRFSS reached both households with landline telephones and households which only had cell phones. Like the annual BRFSS, New York State's 2014 eBRFSS was designed to be representative of the non-institutionalized adult household population, aged 18 years and older.

### Reported Health Indicators

There are a total of 50 health indicators included in the report. The health indicators include 10 measures included in the New York State Department of Health's Prevention Agenda, NYS Health Innovation Plan (SHIP), Delivery System Reform Incentive Payment (DSRIP) Program, or the NYS Community Health Indicator Reports (CHIRS). An additional 40 important health indicators are also included. The indicators are organized by the Priority Area of the Prevention Agenda and are reported statewide, by region, and by county.

### Data Collection Methodology, Sampling and Weighting

The data collection methods for the 2014 eBRFSS aligned with the CDC's standard annual BRFSS methods. The 2014 eBRFSS questionnaire used standard questions from the BRFSS. Survey interviews were conducted in both English and Spanish. There were 31,690 completed interviews.

The sampling plan for the eBRFSS was developed to result in valid health indicator estimates for New York City (NYC) and each of the 57 counties outside NYC. The sampling approach stratified landlines by county and implemented a disproportionate stratified sampling design that accounted for both listed-households and unlisted numbers. Cell phone households were accounted for through additional strata that covered contiguous groups of counties.

Data were weighted to represent the population using a methodology known as iterative proportional fitting (raking). Raking adjusted the data so that groups underrepresented in the sample were more accurately represented in the estimated rates. Raking also enabled surveys conducted by cell phone to be included in the weighting and to accurately match sample distributions of specified demographic characteristics of the population. The raking categories included in the eBRFSS were: age, gender, race/ethnicity, education, marital status, owner/renter status, telephone usage (i.e. landline and cell phone combinations), and county of residence.

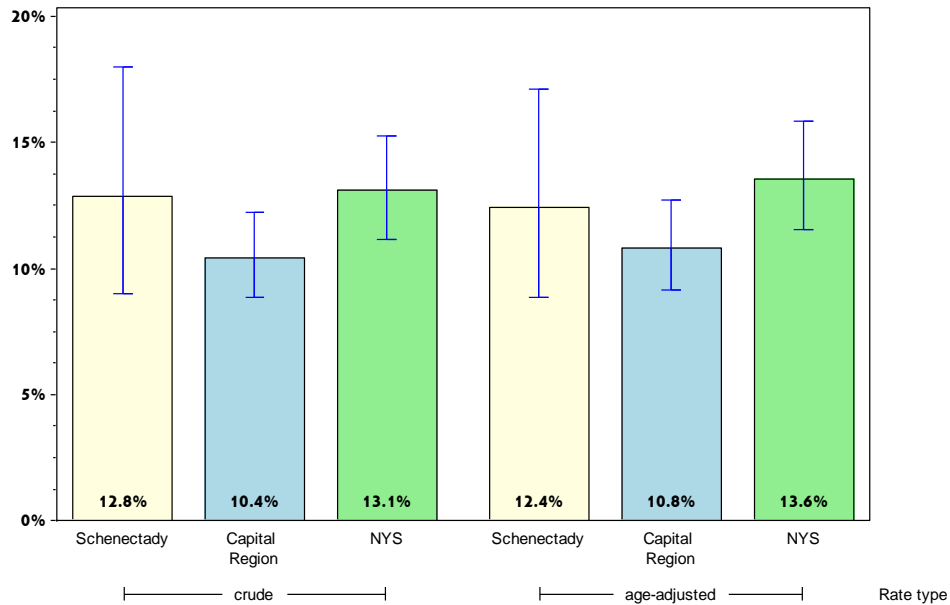
### Limitations of Data Use:

During data analysis, criteria were applied to suppress rates based on too few surveys to be reliable and to identify rates that are highly variable. Rates in which less than 10 respondents were in the numerator or less than 50 respondents were in the denominator were considered unreliable and suppressed from reporting. Rates considered to have high variability due to having confidence limits greater than  $\pm 10\%$  are noted.

# Schenectady

## Improve Health Status and Reduce Health Disparities

Percentage of adults who did not receive medical care because of cost\*



### Schenectady County

### Capital Region

	Est. # of Adults	Percent	95% CI	Est. # of Adults	Percent	95% CI
<b>Total</b>	15,459	12.8	(9.0-18.0)	78,780	10.4	(8.9-12.2)
<b>Age</b>						
18-24		#		9,000	9.5	(5.8-15.1)
25-34	4,308	17.5 <sup>^</sup>	(9.1-31.1)	21,597	17.3	(12.2-23.9)
35-44		#		12,616	11.0	(7.4-16.0)
45-64	7,274	17.2 <sup>^</sup>	(9.7-28.7)	29,082	11.0	(8.6-14.1)
65+		#		6,173	4.3	(2.9-6.2)
<b>Race</b>						
White, NH	11,414	11.6	(7.8-17.1)	61,538	9.6	(7.9-11.5)
Black, NH		#		5,810	15.6	(10.2-23.1)
Hispanic		#		6,161	24.0	(16.3-33.9)
Other, NH		#		5,270	10.6 <sup>^</sup>	(4.3-24.0)
<b>Sex</b>						
male	5,819	10.1	(5.9-16.9)	35,709	9.7	(7.5-12.5)
female	9,641	15.3	(9.6-23.6)	43,071	11.1	(9.0-13.6)
<b>Age-adjusted<sup>&amp;</sup></b>		12.4	(8.8-17.1)		10.8	(9.2-12.7)

\* Among people needing to see a doctor in the past 12 months

& Percent is age-adjusted to the 2000 United States Population.

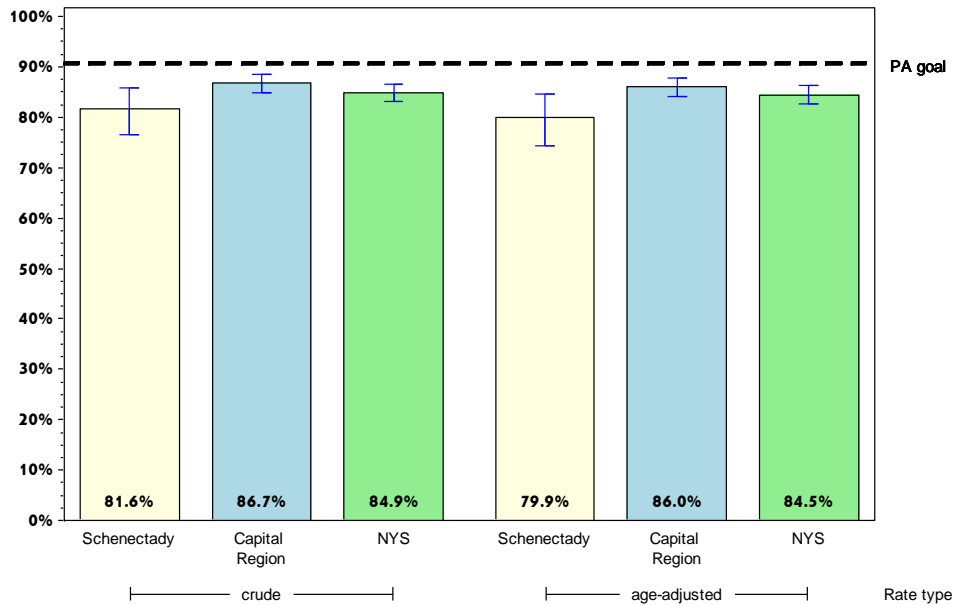
# Rates with <10 in the numerator or <50 in the denominator are suppressed.

<sup>^</sup> Highly variable rate (confidence interval with a half-width greater than 10).

# Schenectady

## Improve Health Status and Reduce Health Disparities

### Percentage of adults who have a regular health care provider



#### Schenectady County

#### Capital Region

	Est. # of Adults	Percent	95% CI	Est. # of Adults	Percent	95% CI
<b>Total</b>	97,740	81.6	(76.4-85.8)	655,372	86.7	(84.8-88.4)
<b>Age</b>		#				
18-24		#		69,621	73.2	(64.4-80.5)
25-34	16,891	69.1 <sup>^</sup>	(54.5-80.8)	89,783	71.5	(64.8-77.5)
35-44	15,141	80.5 <sup>^</sup>	(66.7-89.5)	102,018	88.6	(84.5-91.7)
45-64	36,005	86.1	(77.7-91.6)	241,515	92.1	(89.9-93.9)
65+	22,430	95.9	(91.0-98.2)	140,729	97.2	(96.0-98.1)
<b>Race</b>						
White, NH	79,610	81.2	(75.2-86.0)	563,297	87.5	(85.5-89.3)
Black, NH		#		27,716	74.9 <sup>^</sup>	(61.2-85.0)
Hispanic		#		20,329	79.8	(71.9-86.0)
Other, NH		#		44,030	88.6	(81.8-93.0)
<b>Sex</b>						
male	41,187	72.4	(63.7-79.8)	296,915	81.0	(77.7-84.0)
female	56,553	89.8	(84.6-93.4)	358,457	92.0	(90.1-93.6)
<b>Age-adjusted<sup>&amp;</sup></b>		79.9	(74.3-84.6)		86.0	(84.1-87.8)

& Percent is age-adjusted to the 2000 United States Population.

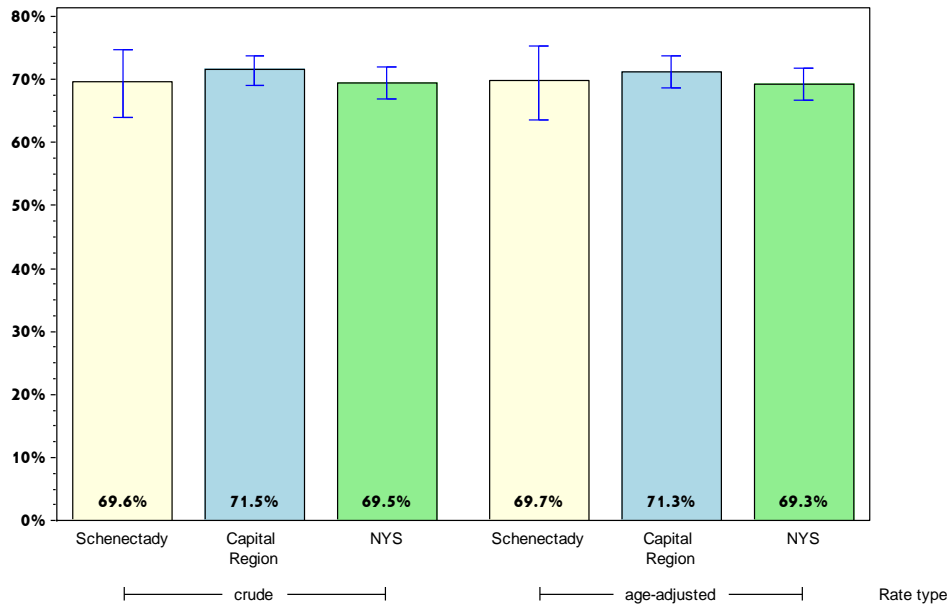
# Rates with <10 in the numerator or <50 in the denominator are suppressed.

<sup>^</sup> Highly variable rate (confidence interval with a half-width greater than 10).

# Schenectady

## Improve Health Status and Reduce Health Disparities

### Percentage of adults who had a dentist visit within the past year



#### Schenectady County

#### Capital Region

	Est. # of Adults	Percent	95% CI	Est. # of Adults	Percent	95% CI
<b>Total</b>	78,857	69.6	(63.9-74.7)	503,799	71.5	(69.1-73.8)
<b>Age</b>		#				
18-24		#		60,059	72.7 <sup>^</sup>	(61.6-81.5)
25-34	14,489	62.2 <sup>^</sup>	(47.4-75.0)	80,087	68.6	(61.6-75.0)
35-44	14,064	77.3 <sup>^</sup>	(62.0-87.6)	80,262	72.9	(66.8-78.3)
45-64	28,561	72.0 <sup>^</sup>	(62.0-80.2)	183,034	73.5	(69.8-76.8)
65+	14,706	66.8 <sup>^</sup>	(56.0-76.1)	90,249	67.0	(63.2-70.7)
<b>Race</b>						
White, NH	66,493	71.5	(65.6-76.8)	436,972	72.6	(70.0-75.0)
Black, NH		#		17,633	53.0 <sup>^</sup>	(40.6-64.9)
Hispanic		#		14,975	67.1 <sup>^</sup>	(56.8-76.0)
Other, NH		#		34,218	73.1 <sup>^</sup>	(60.5-82.7)
<b>Sex</b>						
male	36,758	66.1	(57.7-73.6)	231,254	67.5	(63.6-71.1)
female	42,099	72.9	(65.0-79.6)	272,544	75.4	(72.6-78.0)
<b>Age-adjusted<sup>&amp;</sup></b>		69.7	(63.6-75.2)		71.3	(68.7-73.7)

& Percent is age-adjusted to the 2000 United States Population.

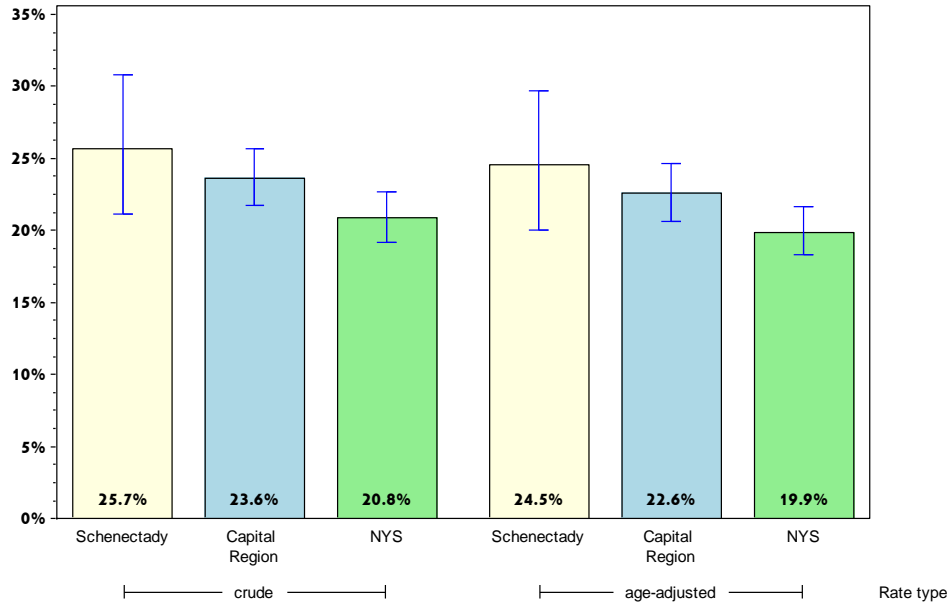
# Rates with <10 in the numerator or <50 in the denominator are suppressed.

<sup>^</sup> Highly variable rate (confidence interval with a half-width greater than 10).

# Schenectady

## Improve Health Status and Reduce Health Disparities

### Percentage of adults living with a disability\*



	Schenectady County			Capital Region		
	Est. # of Adults	Percent	95% CI	Est. # of Adults	Percent	95% CI
<b>Total</b>	30,431	25.7	(21.1-30.8)	175,208	23.6	(21.7-25.7)
<b>Age</b>		#				
18-24		#		8,717	9.4	(5.9-14.5)
25-34	3,295	13.5 <sup>^</sup>	(6.6-25.8)	20,013	16.5	(11.4-23.4)
35-44	3,680	20.4 <sup>^</sup>	(11.3-34.2)	18,192	16.2	(12.0-21.5)
45-64	14,537	34.7	(26.2-44.3)	74,792	28.8	(25.5-32.3)
65+	7,571	33.0	(24.5-42.7)	51,545	36.3	(32.6-40.1)
<b>Race</b>						
White, NH	25,519	26.4	(21.6-31.7)	152,818	24.2	(22.1-26.4)
Black, NH		#		8,407	23.4	(16.1-32.7)
Hispanic		#		6,619	26.5 <sup>^</sup>	(18.4-36.7)
Other, NH		#		7,364	14.9 <sup>^</sup>	(8.4-25.1)
<b>Sex</b>						
male	11,845	21.0	(15.7-27.4)	83,089	23.2	(20.3-26.4)
female	18,586	29.9	(23.1-37.8)	92,118	24.1	(21.6-26.8)
<b>Age-adjusted<sup>&amp;</sup></b>		24.5	(20.0-29.7)		22.6	(20.6-24.6)

\* Limited activities (physical, mental, or emotional problems); need of special equipment (e.g. cane, wheel chair).

& Percent is age-adjusted to the 2000 United States Population.

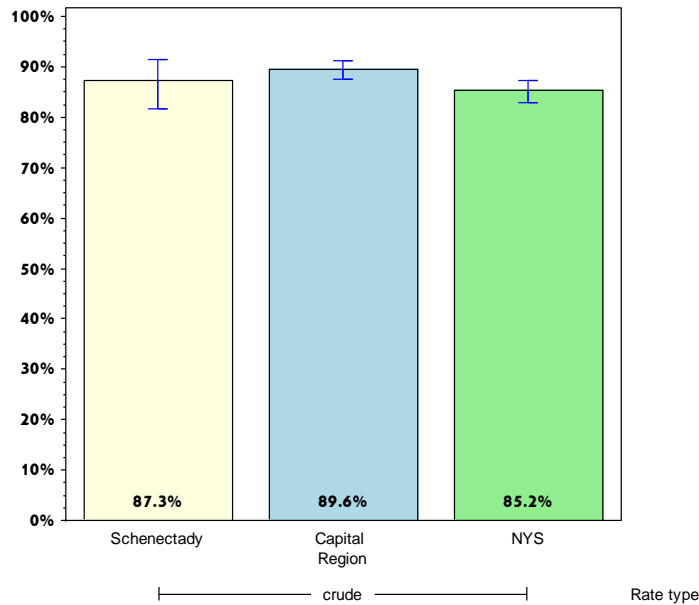
# Rates with <10 in the numerator or <50 in the denominator are suppressed.

<sup>^</sup> Highly variable rate (confidence interval with a half-width greater than 10).

# Schenectady

## Improve Health Status and Reduce Health Disparities

### Percentage of adults aged 18-64 years with healthcare coverage



#### Schenectady County

#### Capital Region

	Est. # of Adults	Percent	95% CI	Est. # of Adults	Percent	95% CI
<b>Total</b>	82,563	87.3	(81.7-91.4)	534,574	89.6	(87.6-91.2)
<b>Age<sup>+</sup></b>						
18-24						
25-34						
35-44						
45-64						
65+						
<b>Race</b>						
White, NH	68,442	89.5	(84.1-93.2)	453,130	90.5	(88.4-92.3)
Black, NH		#		27,834	87.0	(77.3-93.0)
Hispanic		#		16,505	68.9 <sup>^</sup>	(57.4-78.4)
Other, NH		#		37,106	91.8 <sup>^</sup>	(79.9-96.9)
<b>Sex</b>						
male	39,233	84.8	(76.7-90.4)	262,286	87.7	(84.6-90.2)
female	43,331	89.7	(80.6-94.8)	272,288	91.5	(88.8-93.5)
<b>Age-adjusted<sup>+,&amp;</sup></b>						

& Percent is age-adjusted to the 2000 United States Population.

+ Age-adjusted and age specific percent not generated for health indicators with age range limits.

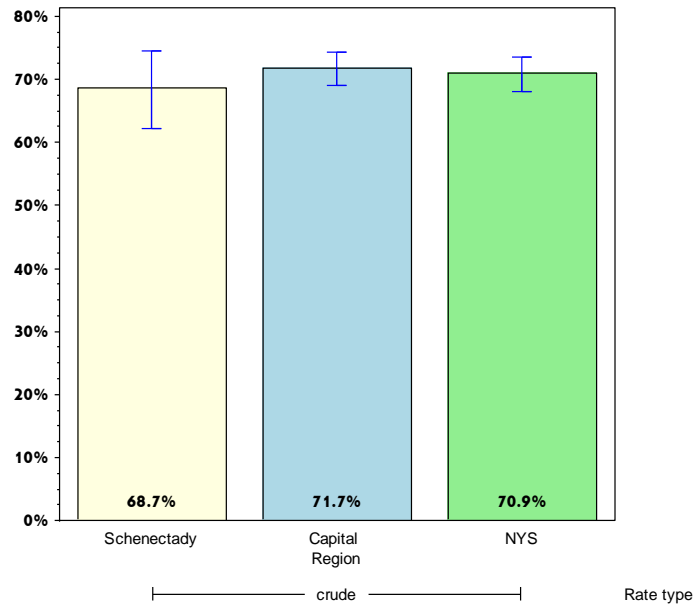
# Rates with <10 in the numerator or <50 in the denominator are suppressed.

<sup>^</sup> Highly variable rate (confidence interval with a half-width greater than 10).

# Schenectady

## Improve Health Status and Reduce Health Disparities

Percentage of adults aged 18-64 years who saw a doctor for a routine checkup within the last year



### Schenectady County

### Capital Region

	Est. # of Adults	Percent	95% CI	Est. # of Adults	Percent	95% CI
<b>Total Age<sup>+</sup></b>	64,310	68.7	(62.2-74.5)	426,846	71.7	(69.1-74.2)
18-24						
25-34						
35-44						
45-64						
65+						
<b>Race</b>						
White, NH	48,305	64.3	(56.9-71.1)	350,182	70.2	(67.3-73.0)
Black, NH		#		25,151	78.0 <sup>^</sup>	(67.5-85.8)
Hispanic		#		17,511	72.3	(62.4-80.4)
Other, NH		#		34,002	85.1	(76.5-91.0)
<b>Sex</b>						
male	27,994	61.4	(51.7-70.2)	198,036	66.4	(62.4-70.2)
female	36,315	75.6	(67.2-82.5)	228,809	77.1	(73.6-80.3)
<b>Age-adjusted<sup>+,&amp;</sup></b>						

& Percent is age-adjusted to the 2000 United States Population.

+ Age-adjusted and age specific percent not generated for health indicators with age range limits.

# Rates with <10 in the numerator or <50 in the denominator are suppressed.

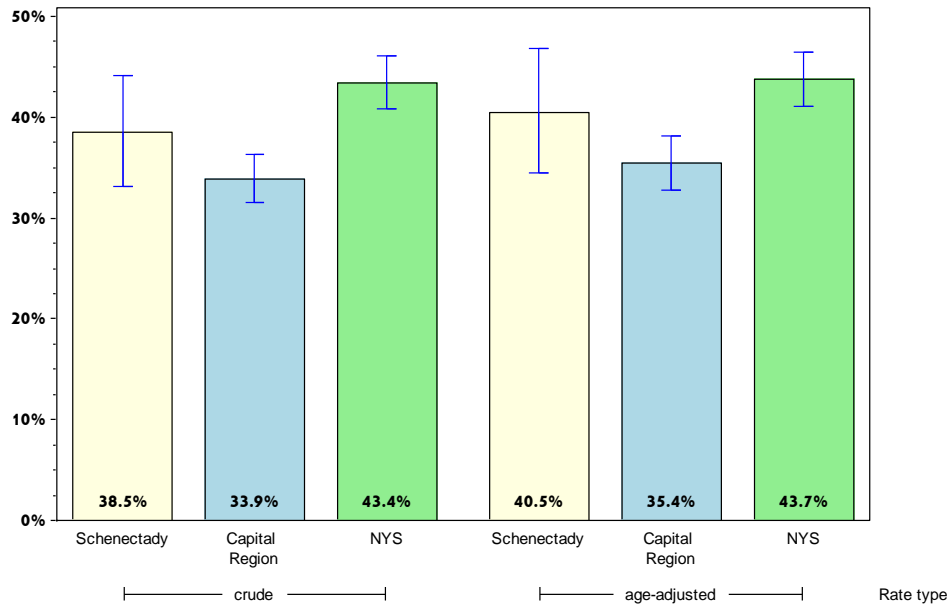
<sup>^</sup> Highly variable rate (confidence interval with a half-width greater than 10).



# Schenectady

## Improve Health Status and Reduce Health Disparities

### Percentage of adults experiencing housing insecurity in the past 12 months\*



#### Schenectady County

#### Capital Region

	Est. # of Adults	Percent	95% CI	Est. # of Adults	Percent	95% CI
<b>Total</b>	40,877	38.5	(33.2-44.1)	227,646	33.9	(31.5-36.4)
<b>Age</b>		#				
18-24		#		25,551	37.1 <sup>^</sup>	(27.3-48.2)
25-34	8,759	42.9 <sup>^</sup>	(30.3-56.5)	46,389	43.5	(36.8-50.5)
35-44	8,674	53.4 <sup>^</sup>	(39.7-66.6)	44,836	41.9	(35.5-48.6)
45-64	15,353	39.1	(30.4-48.6)	84,567	34.2	(30.7-38.0)
65+	4,738	22.1	(14.6-31.9)	25,225	19.1	(16.3-22.3)
<b>Race</b>						
White, NH	29,866	34.2	(28.8-40.0)	186,009	32.2	(29.7-34.9)
Black, NH		#		16,688	57.1 <sup>^</sup>	(47.0-66.6)
Hispanic		#		10,980	49.7 <sup>^</sup>	(39.3-60.2)
Other, NH		#		13,970	32.2 <sup>^</sup>	(21.0-46.0)
<b>Sex</b>						
male	16,340	32.6	(25.6-40.3)	100,235	31.3	(27.8-35.0)
female	24,537	43.8	(36.1-51.8)	127,411	36.3	(33.1-39.6)
<b>Age-adjusted<sup>&amp;</sup></b>		40.5	(34.4-46.8)		35.4	(32.8-38.1)

\* Worried or stressed about having enough money to pay for rent or mortgage.

& Percent is age-adjusted to the 2000 United States Population.

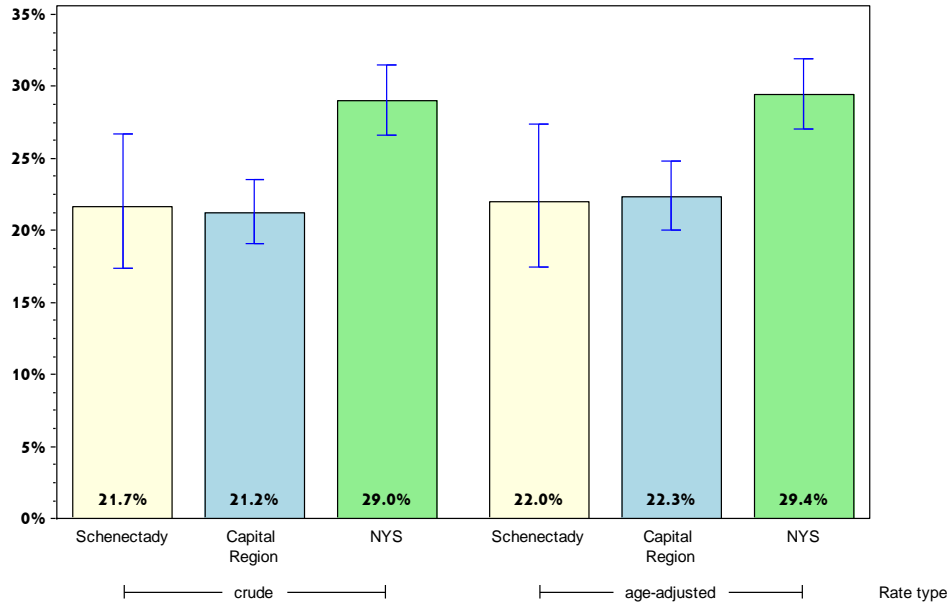
# Rates with <10 in the numerator or <50 in the denominator are suppressed.

<sup>^</sup> Highly variable rate (confidence interval with a half-width greater than 10).

# Schenectady

## Improve Health Status and Reduce Health Disparities

Percentage of adults experiencing food insecurity in the past 12 months\*



### Schenectady County

### Capital Region

	Est. # of Adults	Percent	95% CI	Est. # of Adults	Percent	95% CI
<b>Total</b>	24,845	21.7	(17.3-26.7)	153,218	21.2	(19.1-23.6)
<b>Age</b>		#				
18-24		#		23,761	27.0	(19.2-36.7)
25-34	5,997	25.4 <sup>^</sup>	(16.2-37.5)	30,679	25.7	(20.3-32.0)
35-44	4,686	25.5 <sup>^</sup>	(15.3-39.4)	31,379	28.4	(22.6-35.1)
45-64	10,581	26.5	(18.6-36.3)	54,262	21.4	(18.0-25.1)
65+	1,269	5.7	(2.9-10.7)	12,444	9.0	(6.9-11.6)
<b>Race</b>						
White, NH	17,662	18.8	(14.6-23.7)	117,239	19.0	(16.9-21.2)
Black, NH		#		13,625	39.9 <sup>^</sup>	(28.9-52.1)
Hispanic		#		8,032	34.9 <sup>^</sup>	(25.9-45.1)
Other, NH		#		14,323	30.8 <sup>^</sup>	(17.5-48.2)
<b>Sex</b>						
male	7,863	14.1	(9.6-20.2)	66,917	19.2	(15.9-23.0)
female	16,982	28.8	(22.1-36.6)	86,301	23.2	(20.5-26.1)
<b>Age-adjusted<sup>&amp;</sup></b>		22.0	(17.5-27.4)		22.3	(20.0-24.8)

\* Worried or stressed about having enough money to buy nutritious meals.

& Percent is age-adjusted to the 2000 United States Population.

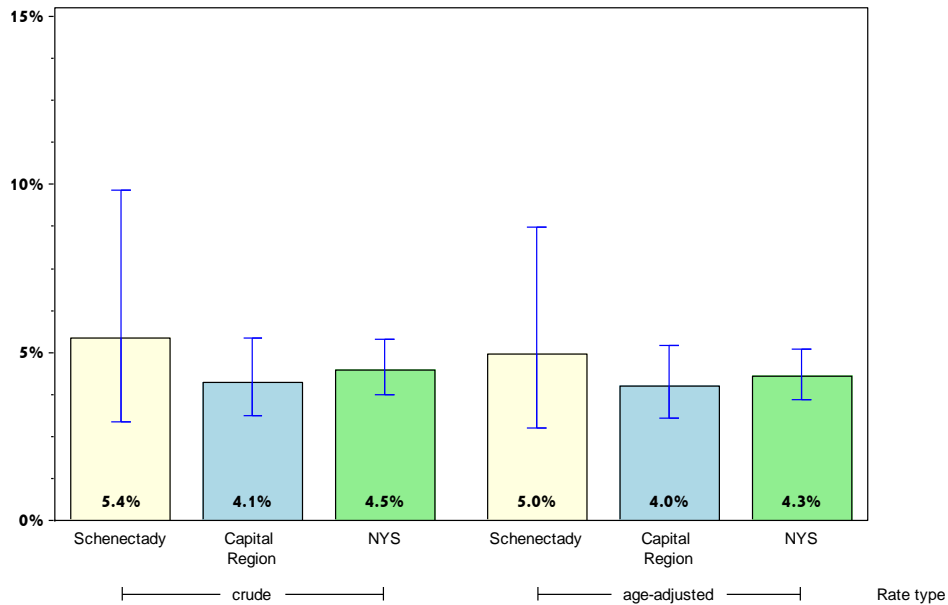
# Rates with <10 in the numerator or <50 in the denominator are suppressed.

<sup>^</sup> Highly variable rate (confidence interval with a half-width greater than 10).

# Schenectady

## Improve Health Status and Reduce Health Disparities

### Percentage of adults with poor self-reported health



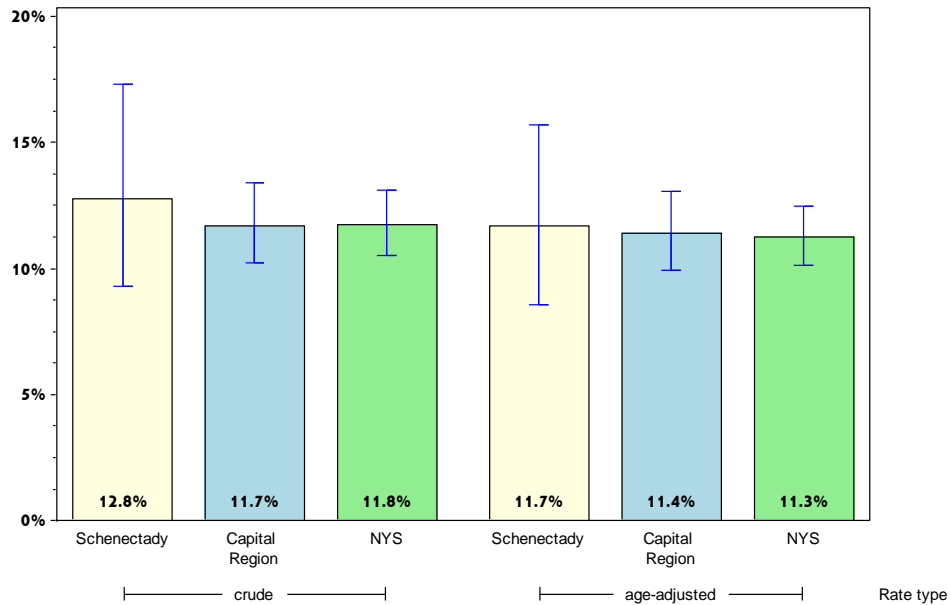
	Schenectady County			Capital Region		
	Est. # of Adults	Percent	95% CI	Est. # of Adults	Percent	95% CI
<b>Total</b>	6,496	5.4	(2.9-9.8)	31,086	4.1	(3.1-5.4)
<b>Age</b>		#			#	
18-24		#			#	
25-34		#			#	
35-44		#		4,002	3.5	(1.9-6.5)
45-64	4,295	10.2 <sup>^</sup>	(4.7-20.6)	15,190	5.8	(3.6-9.2)
65+		#		8,158	5.7	(4.1-7.8)
<b>Race</b>						
White, NH	4,689	4.8	(2.7-8.4)	21,951	3.4	(2.6-4.5)
Black, NH		#		3,013	8.1	(3.9-16.2)
Hispanic		#			#	
Other, NH		#		5,390	10.8 <sup>^</sup>	(3.7-27.7)
<b>Sex</b>						
male		#		12,669	3.5	(2.2-5.4)
female	3,937	6.3	(2.5-14.9)	18,417	4.7	(3.3-6.7)
<b>Age-adjusted<sup>&amp;</sup></b>		5.0	(2.8-8.7)		4.0	(3.0-5.2)

& Percent is age-adjusted to the 2000 United States Population.  
 # Rates with <10 in the numerator or <50 in the denominator are suppressed.  
 ^ Highly variable rate (confidence interval with a half-width greater than 10).

# Schenectady

## Improve Health Status and Reduce Health Disparities

Percentage of adults who report 14 or more days of poor physical health\*



### Schenectady County

### Capital Region

	Est. # of Adults	Percent	95% CI	Est. # of Adults	Percent	95% CI
<b>Total</b>	14,915	12.8	(9.3-17.3)	86,530	11.7	(10.2-13.4)
<b>Age</b>		#				
18-24		#		6,770	7.2	(3.3-14.8)
25-34		#		7,049	5.8	(3.7-8.9)
35-44		#		11,350	9.9	(6.8-14.3)
45-64	8,481	20.8	(13.4-30.7)	36,240	14.2	(11.4-17.4)
65+	2,849	12.6	(7.7-20.0)	24,874	17.8	(14.8-21.3)
<b>Race</b>						
White, NH	12,269	12.9	(9.5-17.3)	67,869	10.8	(9.5-12.2)
Black, NH		#		9,363	25.8 <sup>^</sup>	(14.7-41.2)
Hispanic		#		2,326	9.8	(4.9-18.7)
Other, NH		#		6,972	14.1 <sup>^</sup>	(6.0-29.7)
<b>Sex</b>						
male	5,239	9.5	(6.0-14.7)	36,753	10.2	(8.0-12.9)
female	9,677	15.7	(10.3-23.2)	49,778	13.1	(11.2-15.3)
<b>Age-adjusted<sup>&amp;</sup></b>		11.7	(8.6-15.7)		11.4	(9.9-13.1)

\* Out of the past 30 days.

& Percent is age-adjusted to the 2000 United States Population.

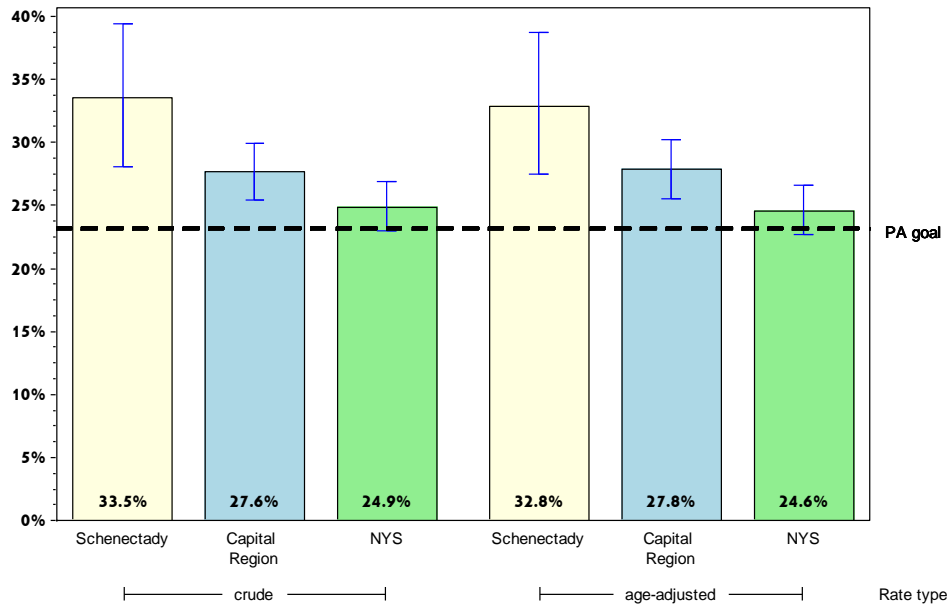
# Rates with <10 in the numerator or <50 in the denominator are suppressed.

<sup>^</sup> Highly variable rate (confidence interval with a half-width greater than 10).

# Schenectady

## Prevent Chronic Diseases

### Percentage of adults who are obese\*



#### Schenectady County

#### Capital Region

	Est. # of Adults	Percent	95% CI	Est. # of Adults	Percent	95% CI
<b>Total</b>	37,880	33.5	(28.1-39.4)	196,015	27.6	(25.5-29.9)
<b>Age</b>		#				
18-24		#		12,899	14.4	(8.4-23.4)
25-34	7,971	34.8 <sup>^</sup>	(21.3-51.2)	27,900	24.7	(19.0-31.4)
35-44	7,437	41.5 <sup>^</sup>	(28.2-56.2)	36,257	33.5	(27.6-40.0)
45-64	17,689	43.7	(34.6-53.3)	84,116	33.3	(29.8-37.0)
65+	3,714	16.5	(11.1-23.7)	33,329	24.5	(21.4-27.9)
<b>Race</b>						
White, NH	28,800	31.5	(26.0-37.6)	167,713	27.7	(25.4-30.1)
Black, NH		#		12,819	38.0 <sup>^</sup>	(27.3-50.1)
Hispanic		#		6,873	28.0	(20.4-37.1)
Other, NH		#		8,610	18.6 <sup>^</sup>	(10.1-31.8)
<b>Sex</b>						
male	19,039	33.7	(25.8-42.6)	98,578	27.4	(24.2-30.7)
female	18,841	33.3	(26.2-41.3)	97,437	27.9	(24.9-31.1)
<b>Age-adjusted<sup>&amp;</sup></b>		32.8	(27.5-38.7)		27.8	(25.6-30.3)

\* Obesity defined as a Body Mass Index (BMI)  $\geq 30$ . BMI is calculated based on weight and height.

& Percent is age-adjusted to the 2000 United States Population.

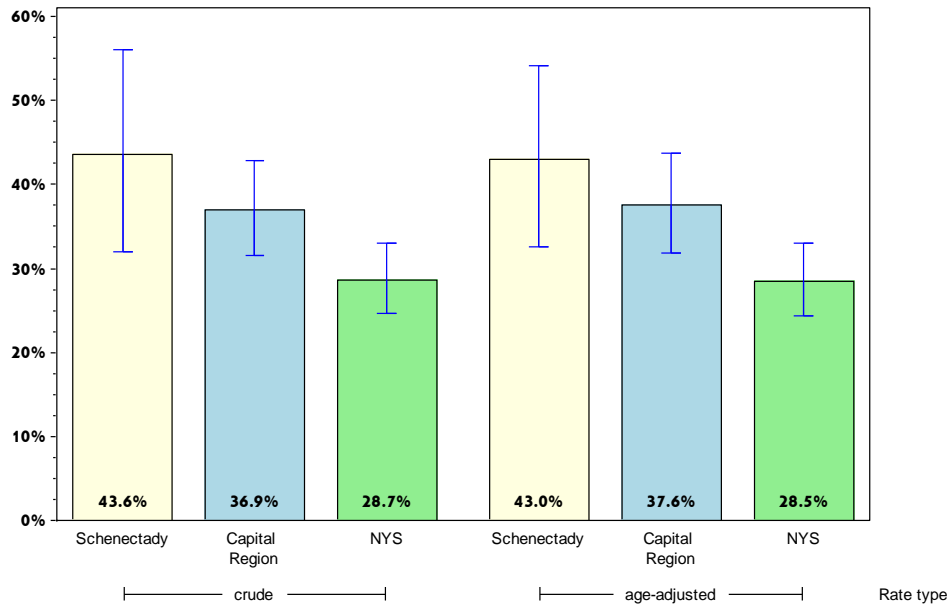
# Rates with  $<10$  in the numerator or  $<50$  in the denominator are suppressed.

<sup>^</sup> Highly variable rate (confidence interval with a half-width greater than 10).

# Schenectady

## Prevent Chronic Diseases

Percentage of adults with an annual household income less than \$25,000 who are obese\*



	Schenectady County			Capital Region		
	Est. # of Adults	Percent	95% CI	Est. # of Adults	Percent	95% CI
<b>Total</b>	11,178	43.6 <sup>^</sup>	(31.9-56.1)	54,587	36.9	(31.5-42.8)
<b>Age</b>						
18-24		#		3,020	17.4 <sup>^</sup>	(8.4-32.5)
25-34		#		10,222	39.3 <sup>^</sup>	(24.9-55.8)
35-44		#		7,713	41.2 <sup>^</sup>	(25.5-58.9)
45-64		#		23,403	48.3 <sup>^</sup>	(38.0-58.8)
65+		#		10,229	27.6	(21.5-34.7)
<b>Race</b>						
White, NH	6,919	42.3 <sup>^</sup>	(30.4-55.2)	41,621	36.5	(30.4-43.0)
Black, NH		#		4,238	36.2 <sup>^</sup>	(22.1-53.2)
Hispanic		#		2,717	28.5 <sup>^</sup>	(16.7-44.3)
Other, NH		#			#	
<b>Sex</b>						
male		#		20,376	30.7	(22.4-40.6)
female	9,239	51.9 <sup>^</sup>	(36.3-67.1)	34,212	42.0	(35.0-49.3)
<b>Age-adjusted<sup>&amp;</sup></b>		43.0 <sup>^</sup>	(32.5-54.1)		37.6	(31.8-43.7)

\* Obesity defined as a Body Mass Index (BMI) >=30. BMI is calculated based on weight and height.

& Percent is age-adjusted to the 2000 United States Population.

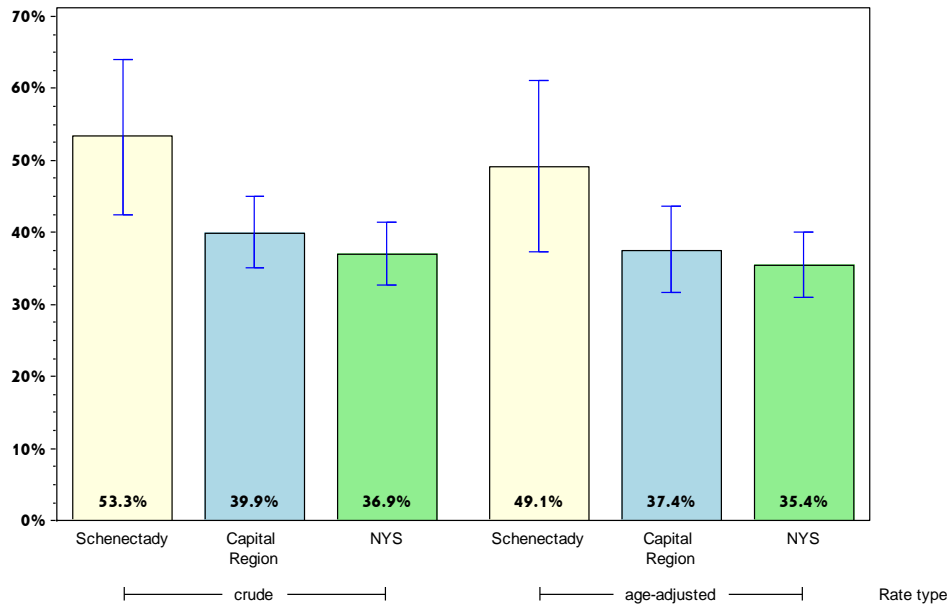
# Rates with <10 in the numerator or <50 in the denominator are suppressed.

<sup>^</sup> Highly variable rate (confidence interval with a half-width greater than 10).

# Schenectady

## Prevent Chronic Diseases

### Percentage of adults living with a disability who are obese\*



#### Schenectady County

#### Capital Region

	Est. # of Adults	Percent	95% CI	Est. # of Adults	Percent	95% CI
<b>Total</b>	15,636	53.3 <sup>^</sup>	(42.4-63.9)	65,790	39.9	(35.1-45.0)
<b>Age</b>		#			#	
18-24		#			#	
25-34		#		7,184	38.8 <sup>^</sup>	(19.6-62.4)
35-44		#		7,077	41.0 <sup>^</sup>	(26.7-56.9)
45-64	9,948	69.1 <sup>^</sup>	(53.9-81.1)	33,361	46.8	(39.6-54.2)
65+	2,182	29.9 <sup>^</sup>	(18.3-44.8)	17,293	35.7	(29.7-42.3)
<b>Race</b>						
White, NH	12,031	49.3 <sup>^</sup>	(38.3-60.4)	55,500	38.7	(33.6-44.2)
Black, NH		#			#	
Hispanic		#			#	
Other, NH		#			#	
<b>Sex</b>						
male	5,851	51.5 <sup>^</sup>	(36.9-65.8)	30,702	37.8	(30.6-45.6)
female	9,784	54.5 <sup>^</sup>	(39.5-68.7)	35,087	42.0	(35.7-48.5)
<b>Age-adjusted<sup>&amp;</sup></b>		49.1 <sup>^</sup>	(37.3-61.0)		37.4	(31.6-43.7)

\* Obesity defined as a Body Mass Index (BMI)  $\geq 30$ . BMI is calculated based on weight and height. Limited activities (physical, mental, or emotional problems); need of special equipment (e.g. cane, wheel chair).

& Percent is age-adjusted to the 2000 United States Population.

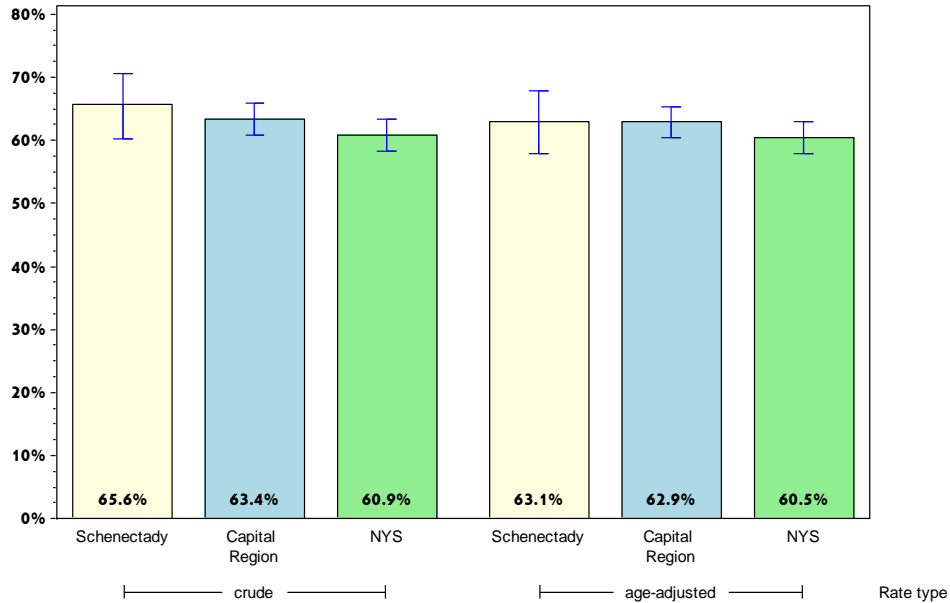
# Rates with  $<10$  in the numerator or  $<50$  in the denominator are suppressed.

<sup>^</sup> Highly variable rate (confidence interval with a half-width greater than 10).

# Schenectady

## Prevent Chronic Diseases

### Percentage of adults overweight or obese\*



#### Schenectady County

#### Capital Region

	Est. # of Adults	Percent	95% CI	Est. # of Adults	Percent	95% CI
<b>Total</b>	74,183	65.6	(60.3-70.6)	449,862	63.4	(60.9-65.8)
<b>Age</b>		#				
18-24		#		36,543	40.7 <sup>^</sup>	(31.2-51.1)
25-34	14,946	65.2 <sup>^</sup>	(51.8-76.5)	65,156	57.7	(51.1-64.0)
35-44	13,697	76.4 <sup>^</sup>	(63.0-86.0)	71,436	66.1	(59.8-71.8)
45-64	31,174	77.1	(69.5-83.3)	182,293	72.2	(68.8-75.3)
65+	12,395	54.9 <sup>^</sup>	(43.7-65.7)	88,147	64.8	(60.7-68.6)
<b>Race</b>						
White, NH	60,027	65.6	(59.9-70.9)	381,643	63.1	(60.5-65.6)
Black, NH		#		25,401	75.3	(65.7-83.0)
Hispanic		#		17,407	70.9 <sup>^</sup>	(60.2-79.7)
Other, NH		#		25,411	55.0 <sup>^</sup>	(40.4-68.8)
<b>Sex</b>						
male	40,453	71.6	(64.1-78.1)	249,199	69.2	(65.4-72.7)
female	33,730	59.7	(51.9-66.9)	200,663	57.5	(54.1-60.8)
<b>Age-adjusted<sup>&amp;</sup></b>		63.1	(58.0-67.9)		62.9	(60.4-65.3)

\* Defined as a Body Mass Index (BMI)  $\geq 25$ . BMI is calculated based on weight and height.

& Percent is age-adjusted to the 2000 United States Population.

# Rates with  $<10$  in the numerator or  $<50$  in the denominator are suppressed.

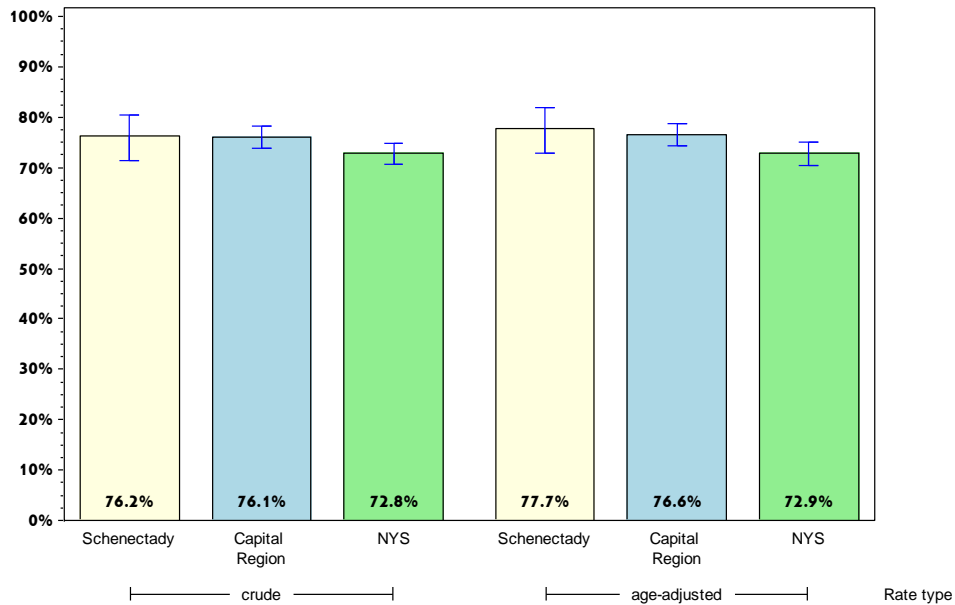
<sup>^</sup> Highly variable rate (confidence interval with a half-width greater than 10).



# Schenectady

## Prevent Chronic Diseases

Percentage of adults who participated in leisure time physical activity in the past 30 days\*



### Schenectady County

### Capital Region

	Est. # of Adults	Percent	95% CI	Est. # of Adults	Percent	95% CI
<b>Total</b>	89,542	76.2	(71.3-80.5)	556,553	76.1	(73.9-78.2)
<b>Age</b>		#				
18-24		#		75,199	82.7 <sup>^</sup>	(71.5-90.1)
25-34	19,784	83.7 <sup>^</sup>	(73.3-90.6)	94,246	78.5	(71.7-84.0)
35-44	15,526	84.6 <sup>^</sup>	(71.0-92.5)	88,206	79.6	(73.8-84.3)
45-64	30,543	72.6	(63.2-80.3)	196,559	76.2	(72.8-79.3)
65+	14,521	64.2 <sup>^</sup>	(53.9-73.3)	93,338	66.8	(62.9-70.4)
<b>Race</b>						
White, NH	75,884	78.4	(73.1-82.8)	479,185	76.6	(74.2-78.8)
Black, NH		#		24,322	71.4 <sup>^</sup>	(59.7-80.9)
Hispanic		#		17,336	72.5 <sup>^</sup>	(60.3-82.1)
Other, NH		#		35,711	75.0 <sup>^</sup>	(63.2-84.0)
<b>Sex</b>						
male	44,412	78.8	(72.0-84.2)	272,326	76.8	(73.1-80.1)
female	45,130	73.8	(66.5-80.0)	284,227	75.6	(72.8-78.1)
<b>Age-adjusted<sup>&amp;</sup></b>		77.7	(72.9-81.9)		76.6	(74.2-78.8)

\* Any physical activities or exercises such as running or walking

& Percent is age-adjusted to the 2000 United States Population.

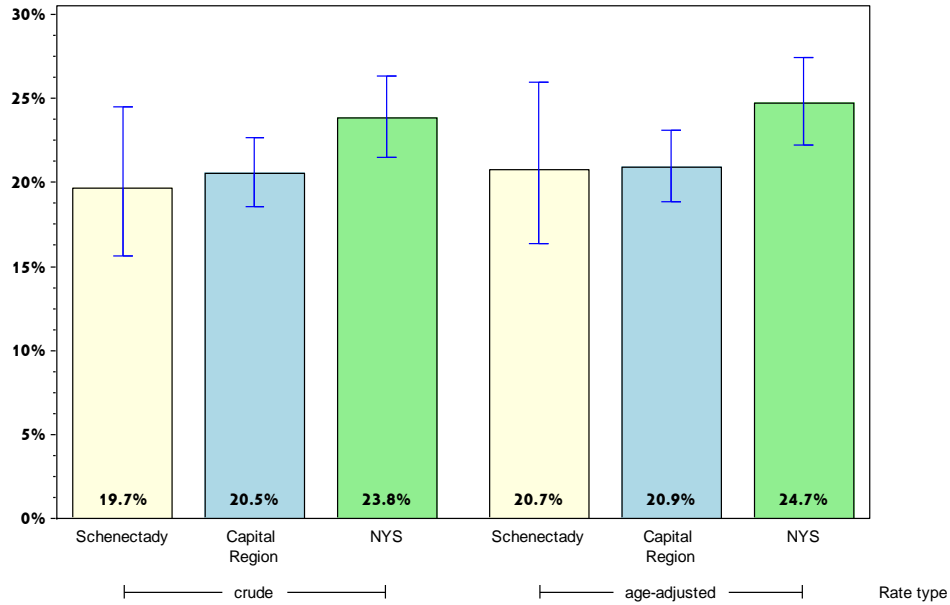
# Rates with <10 in the numerator or <50 in the denominator are suppressed.

<sup>^</sup> Highly variable rate (confidence interval with a half-width greater than 10).

# Schenectady

## Prevent Chronic Diseases

### Percentage of adults who consume one or more sugary drinks daily\*



#### Schenectady County

#### Capital Region

	Est. # of Adults	Percent	95% CI	Est. # of Adults	Percent	95% CI
<b>Total</b>	22,470	19.7	(15.6-24.5)	146,058	20.5	(18.5-22.7)
<b>Age</b>		#				
18-24		#		28,523	32.9	(24.4-42.8)
25-34	7,168	30.6 <sup>^</sup>	(18.8-45.7)	36,519	31.0	(24.6-38.1)
35-44	3,657	19.9 <sup>^</sup>	(12.2-30.8)	18,018	16.3	(12.6-20.9)
45-64	6,557	16.5	(11.3-23.5)	42,321	16.9	(14.4-19.8)
65+	2,167	9.8	(5.7-16.2)	18,870	13.9	(11.5-16.7)
<b>Race</b>						
White, NH	17,748	19.0	(14.5-24.4)	121,145	19.9	(17.8-22.3)
Black, NH		#		10,242	30.3 <sup>^</sup>	(20.6-42.2)
Hispanic		#		8,727	38.5 <sup>^</sup>	(29.0-49.0)
Other, NH		#		5,944	12.5	(7.4-20.3)
<b>Sex</b>						
male	15,193	27.4	(20.5-35.7)	84,851	24.6	(21.5-28.0)
female	7,278	12.4	(8.7-17.3)	61,207	16.7	(14.2-19.5)
<b>Age-adjusted<sup>&amp;</sup></b>		20.7	(16.3-26.0)		20.9	(18.8-23.1)

\* Sugary drinks include regular soda, and sugar-sweetened drinks.

& Percent is age-adjusted to the 2000 United States Population.

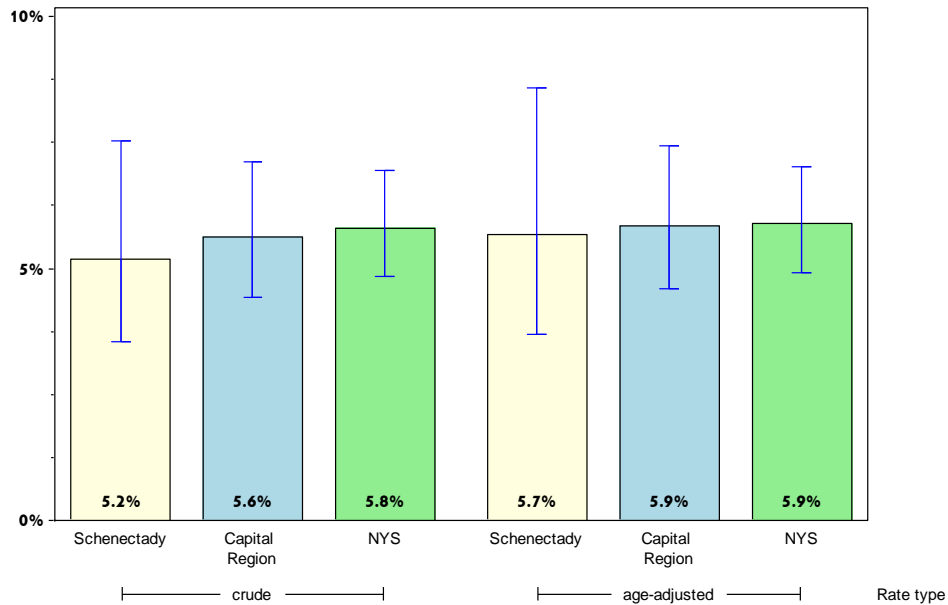
# Rates with <10 in the numerator or <50 in the denominator are suppressed.

<sup>^</sup> Highly variable rate (confidence interval with a half-width greater than 10).

# Schenectady

## Prevent Chronic Diseases

### Percentage of adults who consume fast-food three or more times per week



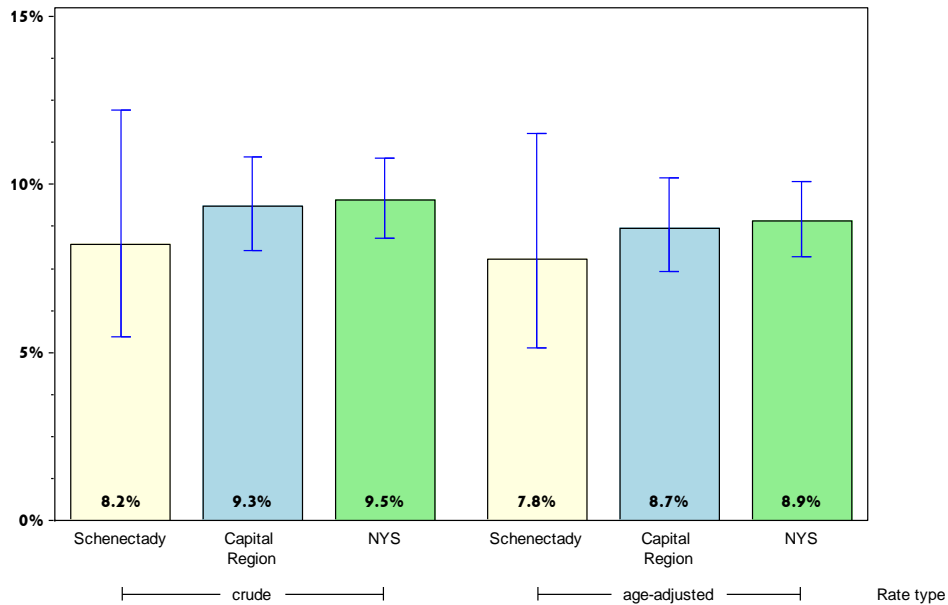
	Schenectady County			Capital Region		
	Est. # of Adults	Percent	95% CI	Est. # of Adults	Percent	95% CI
<b>Total</b>	5,825	5.2	(3.5-7.5)	39,790	5.6	(4.4-7.1)
<b>Age</b>						
18-24		#		8,329	9.7	(5.1-17.5)
25-34	1,696	7.4	(3.9-13.7)	11,200	9.6	(5.7-15.5)
35-44		#		5,776	5.3	(3.2-8.5)
45-64		#		10,867	4.4	(2.9-6.5)
65+		#		3,146	2.3	(1.5-3.6)
<b>Race</b>						
White, NH	4,486	4.9	(3.1-7.5)	31,483	5.2	(4.1-6.6)
Black, NH		#		5,232	15.8 <sup>^</sup>	(6.0-35.5)
Hispanic		#		2,006	9.0	(5.0-15.8)
Other, NH		#			#	
<b>Sex</b>						
male	4,673	8.4	(5.5-12.7)	31,282	9.1	(6.9-12.0)
female		#		8,509	2.3	(1.7-3.3)
<b>Age-adjusted<sup>&amp;</sup></b>		5.7	(3.7-8.6)		5.9	(4.6-7.4)

& Percent is age-adjusted to the 2000 United States Population.  
 # Rates with <10 in the numerator or <50 in the denominator are suppressed.  
 ^ Highly variable rate (confidence interval with a half-width greater than 10).

# Schenectady

## Prevent Chronic Diseases

### Percentage of adults with physician diagnosed diabetes\*



#### Schenectady County

#### Capital Region

	Est. # of Adults	Percent	95% CI	Est. # of Adults	Percent	95% CI
<b>Total</b>	9,910	8.2	(5.5-12.2)	70,730	9.3	(8.0-10.8)
<b>Age</b>		#			#	
18-24		#			#	
25-34		#			#	
35-44		#		8,295	7.2	(3.8-13.1)
45-64	4,216	10.0	(6.2-15.6)	27,350	10.4	(8.0-13.3)
65+	4,217	18.0 <sup>^</sup>	(9.1-32.5)	32,001	22.1	(18.9-25.7)
<b>Race</b>						
White, NH	7,293	7.4	(5.0-11.0)	56,938	8.8	(7.6-10.2)
Black, NH		#		5,143	13.9	(8.7-21.3)
Hispanic		#		2,015	7.9	(4.6-13.0)
Other, NH		#		6,634	13.3 <sup>^</sup>	(5.6-28.3)
<b>Sex</b>						
male	5,055	8.8	(5.3-14.4)	40,032	10.9	(8.7-13.5)
female	4,855	7.7	(4.0-14.2)	30,698	7.9	(6.5-9.4)
<b>Age-adjusted<sup>&amp;</sup></b>		7.8	(5.2-11.5)		8.7	(7.4-10.2)

\* As diagnosed by a health professional.

& Percent is age-adjusted to the 2000 United States Population.

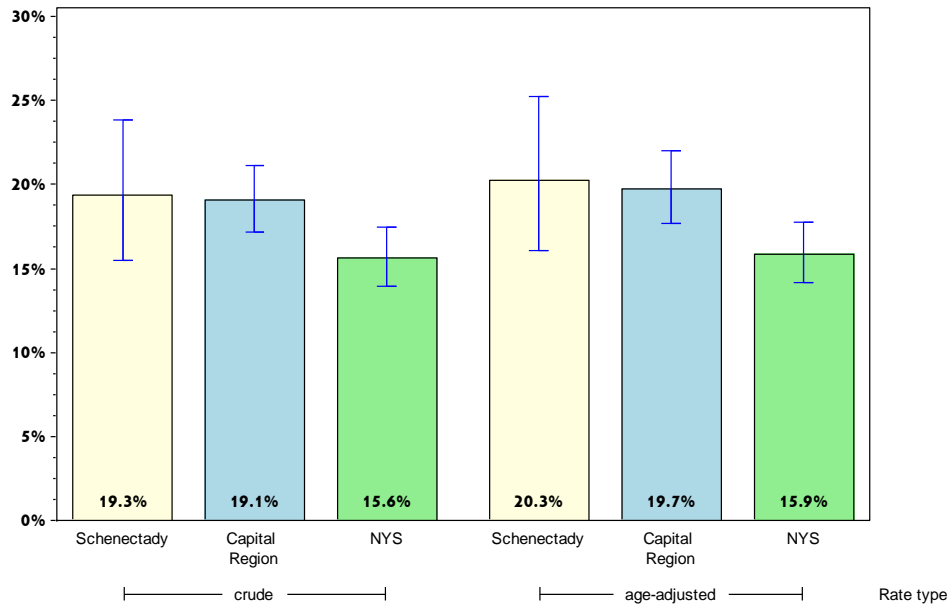
# Rates with <10 in the numerator or <50 in the denominator are suppressed.

<sup>^</sup> Highly variable rate (confidence interval with a half-width greater than 10).

# Schenectady

## Prevent Chronic Diseases

### Percentage of adults who are current smokers



#### Schenectady County

#### Capital Region

	Est. # of Adults	Percent	95% CI	Est. # of Adults	Percent	95% CI
<b>Total</b>	22,677	19.3	(15.5-23.9)	141,063	19.1	(17.2-21.2)
<b>Age</b>		#				
18-24		#		18,990	20.7	(14.6-28.6)
25-34	4,681	19.6 <sup>^</sup>	(11.5-31.4)	31,739	26.0	(20.4-32.5)
35-44	5,487	29.9 <sup>^</sup>	(18.6-44.4)	24,107	21.5	(16.4-27.8)
45-64	9,387	22.5	(16.4-30.0)	55,144	21.2	(18.3-24.4)
65+		#		10,388	7.4	(5.4-10.0)
<b>Race</b>						
White, NH	16,893	17.5	(13.5-22.3)	117,876	18.7	(16.7-20.9)
Black, NH		#		7,493	21.5	(14.8-30.2)
Hispanic		#		8,467	34.6 <sup>^</sup>	(24.9-45.8)
Other, NH		#		7,227	14.7 <sup>^</sup>	(8.0-25.4)
<b>Sex</b>						
male	12,163	21.7	(15.9-28.9)	75,766	21.1	(18.2-24.4)
female	10,514	17.2	(12.5-23.1)	65,298	17.2	(14.8-19.8)
<b>Age-adjusted<sup>&amp;</sup></b>		20.3	(16.1-25.2)		19.7	(17.7-22.0)

& Percent is age-adjusted to the 2000 United States Population.

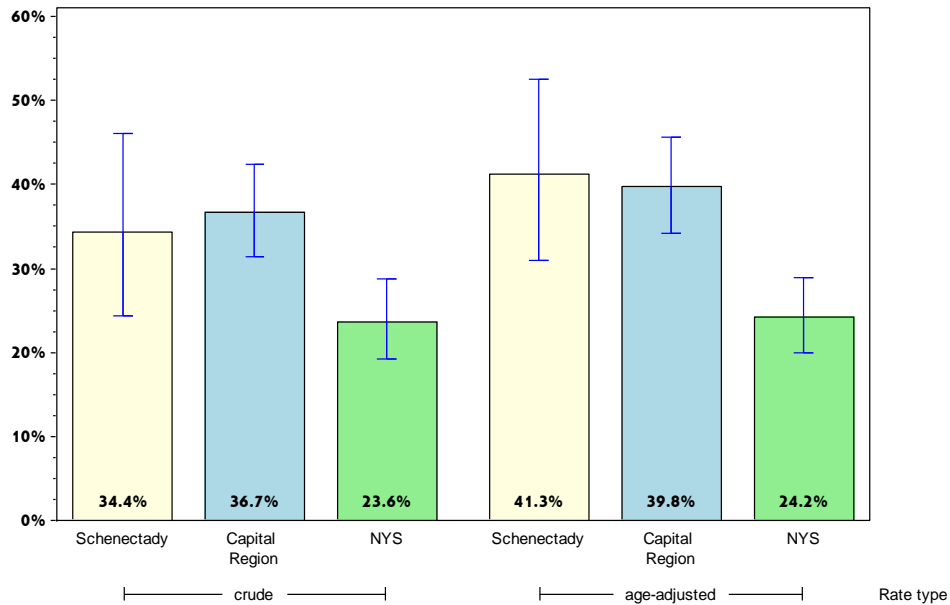
# Rates with <10 in the numerator or <50 in the denominator are suppressed.

<sup>^</sup> Highly variable rate (confidence interval with a half-width greater than 10).

# Schenectady

## Prevent Chronic Diseases

Percentage of adults with annual household income less than \$25,000 who are current smokers



### Schenectady County

### Capital Region

	Est. # of Adults	Percent	95% CI	Est. # of Adults	Percent	95% CI
<b>Total</b>	8,567	34.4 <sup>^</sup>	(24.3-46.1)	56,135	36.7	(31.4-42.3)
<b>Age</b>		#				
18-24		#		5,940	34.3 <sup>^</sup>	(21.7-49.4)
25-34		#		14,236	52.5 <sup>^</sup>	(38.9-65.8)
35-44		#		10,218	51.2 <sup>^</sup>	(35.3-66.7)
45-64		#		20,764	41.1 <sup>^</sup>	(31.8-51.1)
65+		#		4,979	13.3	(8.1-21.0)
<b>Race</b>						
White, NH	5,379	33.1 <sup>^</sup>	(22.6-45.6)	43,833	37.2	(31.3-43.6)
Black, NH		#		3,373	25.7 <sup>^</sup>	(14.8-40.8)
Hispanic		#		4,581	47.6 <sup>^</sup>	(31.2-64.5)
Other, NH		#			#	
<b>Sex</b>						
male		#		30,330	46.8	(38.0-55.7)
female	4,478	26.0 <sup>^</sup>	(15.5-40.4)	25,806	29.3	(23.5-35.9)
<b>Age-adjusted<sup>&amp;</sup></b>		41.3 <sup>^</sup>	(30.9-52.5)		39.8	(34.2-45.6)

& Percent is age-adjusted to the 2000 United States Population.

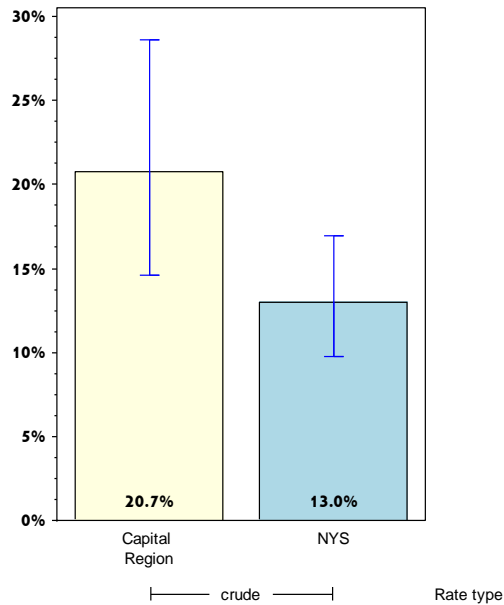
# Rates with <10 in the numerator or <50 in the denominator are suppressed.

<sup>^</sup> Highly variable rate (confidence interval with a half-width greater than 10).

# Schenectady

## Prevent Chronic Diseases

### Percentage of adults aged 18-24 years who are current smokers



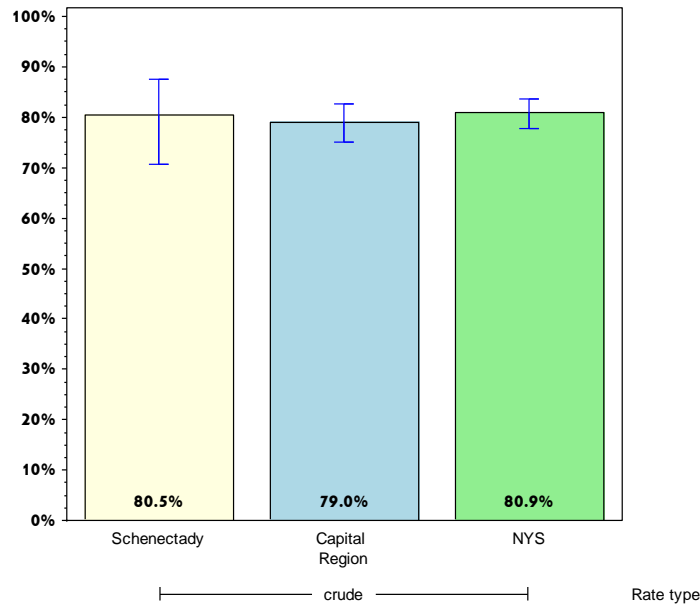
	Schenectady County			Capital Region		
	Est. # of Adults	Percent	95% CI	Est. # of Adults	Percent	95% CI
<b>Total</b>		#		18,990	20.7	(14.6-28.6)
<b>Age<sup>+</sup></b>						
18-24						
25-34						
35-44						
45-64						
65+						
<b>Race</b>						
White, NH		#		16,226	22.0	(14.9-31.2)
Black, NH		#			#	
Hispanic		#			#	
Other, NH		#			#	
<b>Sex</b>						
male		#		9,187	17.5	(10.9-27.0)
female		#		9,803	25.0 <sup>^</sup>	(14.9-38.8)
<b>Age-adjusted<sup>+,&amp;</sup></b>						

& Percent is age-adjusted to the 2000 United States Population.  
 + Age-adjusted and age specific percent not generated for health indicators with age range limits.  
 # Rates with <10 in the numerator or <50 in the denominator are suppressed.  
 ^ Highly variable rate (confidence interval with a half-width greater than 10).

# Schenectady

## Prevent Chronic Diseases

Percentage of women aged 50-74 years receiving breast cancer screening based on recent guidelines\*



### Schenectady County

### Capital Region

	Est. # of Adults	Percent	95% CI	Est. # of Adults	Percent	95% CI
<b>Total</b>	17,279	80.5	(70.6-87.6)	110,971	79.0	(75.0-82.5)
<b>Age<sup>+</sup></b>						
18-24						
25-34						
35-44						
45-64						
65+						
<b>Race</b>						
White, NH	12,999	76.3 <sup>^</sup>	(65.7-84.4)	100,353	78.7	(74.5-82.4)
Black, NH		#			#	
Hispanic		#			#	
Other, NH		#			#	
<b>Sex</b>						
male		#			#	
female	17,279	80.5	(70.6-87.6)	110,971	79.0	(75.0-82.5)
<b>Age-adjusted<sup>+,&amp;</sup></b>						

\* Mammogram within past 2 years.

& Percent is age-adjusted to the 2000 United States Population.

+ Age-adjusted and age specific percent not generated for health indicators with age range limits.

# Rates with <10 in the numerator or <50 in the denominator are suppressed.

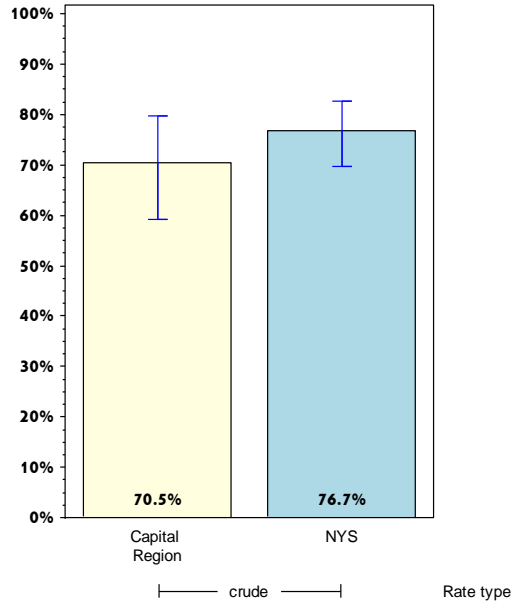
<sup>^</sup> Highly variable rate (confidence interval with a half-width greater than 10).



# Schenectady

## Prevent Chronic Diseases

Percentage of women aged 50-74 years with annual household income of less than \$25,000 receiving breast cancer screening based on recent guidelines\*



	Schenectady County			Capital Region		
	Est. # of Adults	Percent	95% CI	Est. # of Adults	Percent	95% CI
<b>Total</b>		#		21,656	70.5 <sup>^</sup>	(59.2-79.7)
<b>Age<sup>+</sup></b>						
18-24						
25-34						
35-44						
45-64						
65+						
<b>Race</b>						
White, NH		#		16,285	66.3 <sup>^</sup>	(53.7-76.9)
Black, NH		#			#	
Hispanic		#			#	
Other, NH		#			#	
<b>Sex</b>						
male		#			#	
female		#		21,656	70.5 <sup>^</sup>	(59.2-79.7)
<b>Age-adjusted<sup>+,&amp;</sup></b>						

\* Mammogram within past 2 years.

& Percent is age-adjusted to the 2000 United States Population.

+ Age-adjusted and age specific percent not generated for health indicators with age range limits.

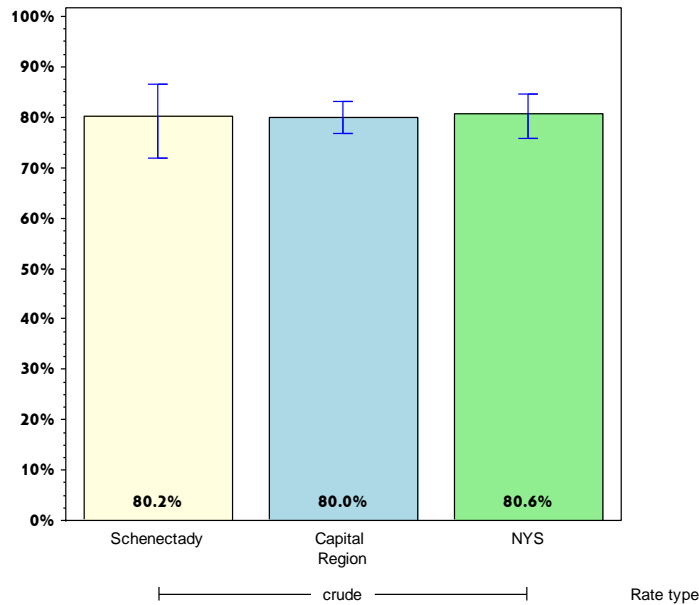
# Rates with <10 in the numerator or <50 in the denominator are suppressed.

<sup>^</sup> Highly variable rate (confidence interval with a half-width greater than 10).

# Schenectady

## Prevent Chronic Diseases

Percentage of women aged 21-65 years receiving cervical cancer screening based on recent guidelines\*



### Schenectady County

### Capital Region

	Est. # of Adults	Percent	95% CI	Est. # of Adults	Percent	95% CI
<b>Total</b>	33,590	80.2	(71.9-86.6)	218,954	80.0	(76.6-83.0)
<b>Age<sup>+</sup></b>						
18-24						
25-34						
35-44						
45-64						
65+						
<b>Race</b>						
White, NH	27,241	80.3	(71.1-87.0)	189,224	81.8	(78.5-84.8)
Black, NH		#		10,116	74.0 <sup>^</sup>	(54.2-87.3)
Hispanic		#		6,537	74.3 <sup>^</sup>	(52.7-88.2)
Other, NH		#		13,077	65.6 <sup>^</sup>	(44.1-82.1)
<b>Sex</b>						
male		#			#	
female	33,590	80.2	(71.9-86.6)	218,954	80.0	(76.6-83.0)
<b>Age-adjusted<sup>+,&amp;</sup></b>						

\* Pap test within past 3 years.

& Percent is age-adjusted to the 2000 United States Population.

+ Age-adjusted and age specific percent not generated for health indicators with age range limits.

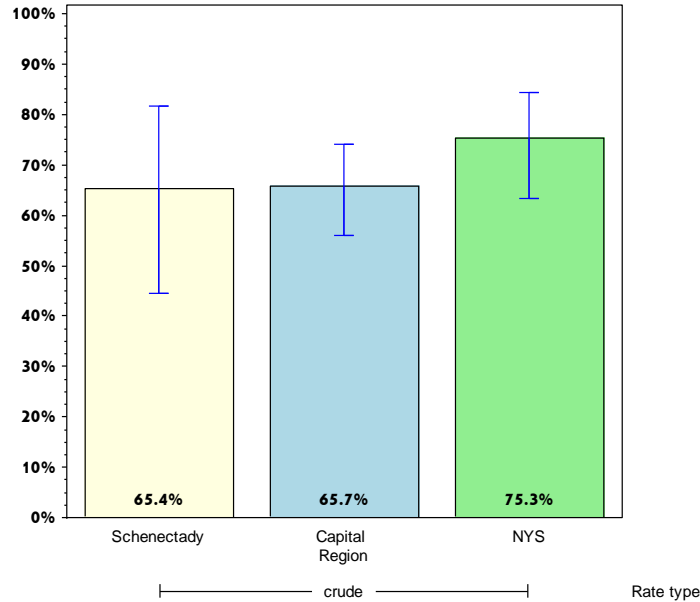
# Rates with <10 in the numerator or <50 in the denominator are suppressed.

<sup>^</sup> Highly variable rate (confidence interval with a half-width greater than 10).

# Schenectady

## Prevent Chronic Diseases

Percentage of women aged 21-65 years with annual household income of less than \$25,000 receiving cervical cancer screening based on recent guidelines\*



### Schenectady County

### Capital Region

	Est. # of Adults	Percent	95% CI	Est. # of Adults	Percent	95% CI
<b>Total</b>	7,082	65.4 <sup>^</sup>	(44.6-81.6)	38,085	65.7	(56.0-74.2)
<b>Age<sup>+</sup></b>						
18-24						
25-34						
35-44						
45-64						
65+						
<b>Race</b>						
White, NH		#		29,878	69.6	(59.7-77.9)
Black, NH		#			#	
Hispanic		#			#	
Other, NH		#			#	
<b>Sex</b>						
male		#			#	
female	7,082	65.4 <sup>^</sup>	(44.6-81.6)	38,085	65.7	(56.0-74.2)

Age-adjusted<sup>+,&</sup>

\* Pap test within past 3 years.

& Percent is age-adjusted to the 2000 United States Population.

+ Age-adjusted and age specific percent not generated for health indicators with age range limits.

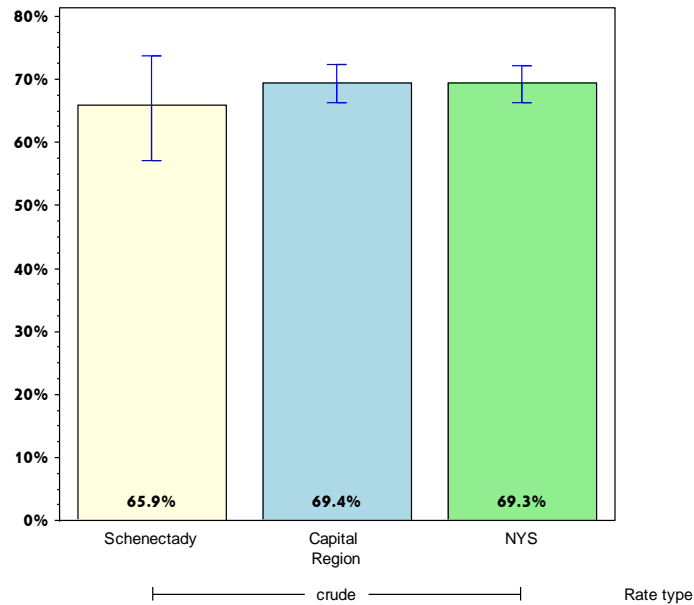
# Rates with <10 in the numerator or <50 in the denominator are suppressed.

<sup>^</sup> Highly variable rate (confidence interval with a half-width greater than 10).

# Schenectady

## Prevent Chronic Diseases

Percentage of adults aged 50-75 years receiving colorectal cancer screening based on recent guidelines\*



	Schenectady County			Capital Region		
	Est. # of Adults	Percent	95% CI	Est. # of Adults	Percent	95% CI
<b>Total Age<sup>+</sup></b>	27,180	65.9	(57.2-73.7)	187,405	69.4	(66.3-72.4)
18-24						
25-34						
35-44						
45-64						
65+						
<b>Race</b>						
White, NH	22,079	64.4	(55.5-72.4)	167,485	70.0	(66.9-73.0)
Black, NH		#		5,819	57.4 <sup>^</sup>	(37.3-75.2)
Hispanic		#			#	
Other, NH		#		10,135	69.0 <sup>^</sup>	(45.3-85.6)
<b>Sex</b>						
male	11,574	58.1 <sup>^</sup>	(45.4-69.9)	86,398	67.2	(62.2-71.9)
female	15,606	73.2 <sup>^</sup>	(62.4-81.7)	101,007	71.5	(67.5-75.1)
<b>Age-adjusted<sup>+,&amp;</sup></b>						

\* Blood stool test within 1 year, or sigmoidoscopy within 5 years with blood stool test within 3 years, or colonoscopy within 10 years.

& Percent is age-adjusted to the 2000 United States Population.

+ Age-adjusted and age specific percent not generated for health indicators with age range limits.

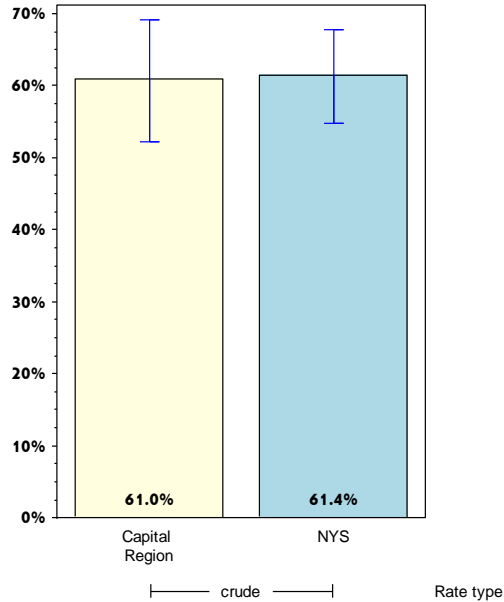
# Rates with <10 in the numerator or <50 in the denominator are suppressed.

<sup>^</sup> Highly variable rate (confidence interval with a half-width greater than 10).

# Schenectady

## Prevent Chronic Diseases

Percentage of adults aged 50-75 years with annual household income less than \$25,000 receiving colorectal cancer screening based on recent guidelines\*



	Schenectady County			Capital Region		
	Est. # of Adults	Percent	95% CI	Est. # of Adults	Percent	95% CI
<b>Total</b>		#		33,685	61.0	(52.1-69.2)
<b>Age<sup>+</sup></b>						
18-24						
25-34						
35-44						
45-64						
65+						
<b>Race</b>						
White, NH		#		26,261	62.3	(53.5-70.3)
Black, NH		#			#	
Hispanic		#			#	
Other, NH		#			#	
<b>Sex</b>						
male		#		11,885	49.3 <sup>^</sup>	(35.9-62.9)
female		#		21,800	70.0	(60.2-78.3)
<b>Age-adjusted<sup>+,&amp;</sup></b>						

\* Blood stool test within 1 year, or sigmoidoscopy within 5 years with blood stool test within 3 years, or colonoscopy within 10 years.

& Percent is age-adjusted to the 2000 United States Population.

+ Age-adjusted and age specific percent not generated for health indicators with age range limits.

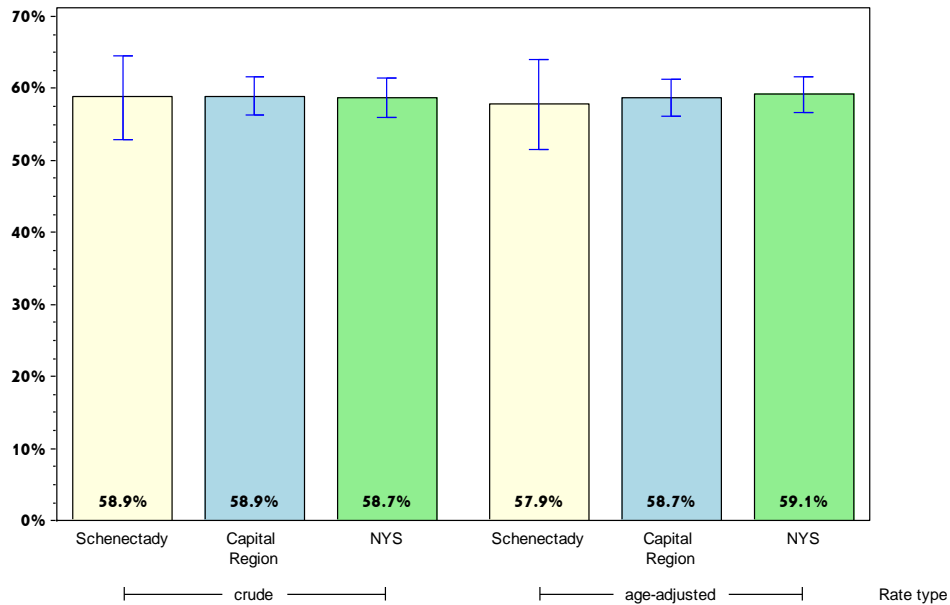
# Rates with <10 in the numerator or <50 in the denominator are suppressed.

<sup>^</sup> Highly variable rate (confidence interval with a half-width greater than 10).

# Schenectady

## Prevent Chronic Diseases

Percentage of adults who had a test for high blood sugar or diabetes within the past three years



### Schenectady County

### Capital Region

	Est. # of Adults	Percent	95% CI	Est. # of Adults	Percent	95% CI
<b>Total</b>	62,107	58.9	(53.0-64.5)	387,390	58.9	(56.3-61.5)
<b>Age</b>		#				
18-24		#		27,483	30.4 <sup>^</sup>	(21.5-41.0)
25-34	12,331	51.0 <sup>^</sup>	(37.4-64.4)	62,651	51.6	(45.0-58.1)
35-44	7,935	49.6 <sup>^</sup>	(35.4-63.9)	60,615	58.6	(51.9-65.0)
45-64	25,054	69.2	(59.3-77.7)	154,280	69.2	(65.5-72.7)
65+	12,200	67.4	(57.7-75.9)	74,984	69.3	(65.0-73.3)
<b>Race</b>						
White, NH	49,190	56.8	(50.3-63.1)	336,654	60.0	(57.3-62.7)
Black, NH		#		18,952	60.5 <sup>^</sup>	(46.6-73.0)
Hispanic		#		11,998	53.0 <sup>^</sup>	(41.9-63.8)
Other, NH		#		19,787	46.7 <sup>^</sup>	(32.5-61.4)
<b>Sex</b>						
male	26,819	53.3	(44.6-61.9)	181,844	57.7	(53.8-61.6)
female	35,288	63.9	(56.1-71.1)	205,546	60.0	(56.5-63.5)
<b>Age-adjusted<sup>&amp;</sup></b>		57.9	(51.6-63.9)		58.7	(56.1-61.3)

& Percent is age-adjusted to the 2000 United States Population.

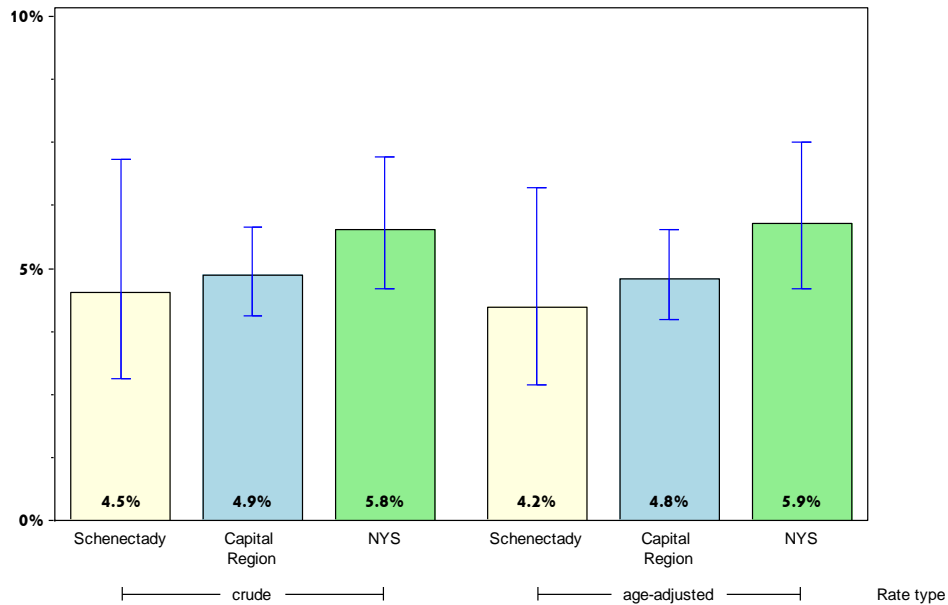
# Rates with <10 in the numerator or <50 in the denominator are suppressed.

<sup>^</sup> Highly variable rate (confidence interval with a half-width greater than 10).

# Schenectady

## Prevent Chronic Diseases

### Percentage of adults with physician-diagnosed prediabetes



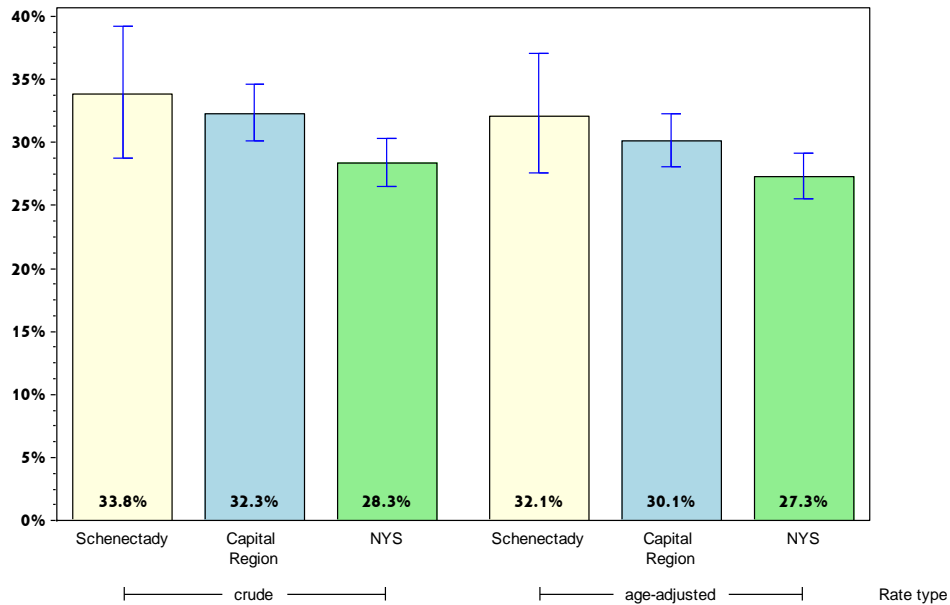
	Schenectady County			Capital Region		
	Est. # of Adults	Percent	95% CI	Est. # of Adults	Percent	95% CI
<b>Total</b>	4,929	4.5	(2.8-7.2)	33,014	4.9	(4.0-5.8)
<b>Age</b>		#			#	
18-24		#			#	
25-34		#		3,641	2.9	(1.7-5.1)
35-44		#		3,857	3.6	(2.0-6.4)
45-64	1,211	3.2	(1.7-6.0)	13,796	5.9	(4.5-7.8)
65+		#		10,296	9.3	(6.9-12.4)
<b>Race</b>						
White, NH	3,422	3.8	(2.3-6.3)	26,899	4.6	(3.8-5.6)
Black, NH		#		2,420	7.6	(3.6-15.2)
Hispanic		#			#	
Other, NH		#			#	
<b>Sex</b>						
male	2,321	4.5	(2.2-9.0)	16,246	5.0	(3.9-6.5)
female	2,608	4.6	(2.4-8.3)	16,768	4.7	(3.7-6.0)
<b>Age-adjusted<sup>&amp;</sup></b>		4.2	(2.7-6.6)		4.8	(4.0-5.8)

& Percent is age-adjusted to the 2000 United States Population.  
 # Rates with <10 in the numerator or <50 in the denominator are suppressed.

# Schenectady

## Prevent Chronic Diseases

### Percentage of adults with physician-diagnosed high blood pressure



#### Schenectady County

#### Capital Region

	Est. # of Adults	Percent	95% CI	Est. # of Adults	Percent	95% CI
<b>Total</b>	40,624	33.8	(28.8-39.3)	243,986	32.3	(30.1-34.6)
<b>Age</b>		#				
18-24		#		4,516	4.8	(1.7-12.9)
25-34		#		17,383	13.8	(9.4-19.9)
35-44	6,351	33.8 <sup>^</sup>	(21.3-49.0)	26,620	23.1	(18.0-29.1)
45-64	15,302	36.2	(27.9-45.4)	100,694	38.3	(34.7-42.1)
65+	15,302	66.8	(57.1-75.2)	88,328	61.4	(57.5-65.1)
<b>Race</b>						
White, NH	35,153	35.9	(30.5-41.8)	209,708	32.6	(30.4-35.0)
Black, NH		#		16,696	44.7 <sup>^</sup>	(33.4-56.6)
Hispanic		#		5,472	21.3	(14.7-30.0)
Other, NH		#		12,111	24.3 <sup>^</sup>	(13.7-39.3)
<b>Sex</b>						
male	19,798	34.4	(27.4-42.1)	133,745	36.5	(33.0-40.1)
female	20,827	33.3	(26.3-41.2)	110,242	28.4	(25.7-31.2)
<b>Age-adjusted<sup>&amp;</sup></b>		32.1	(27.5-37.0)		30.1	(28.0-32.3)

& Percent is age-adjusted to the 2000 United States Population.

# Rates with <10 in the numerator or <50 in the denominator are suppressed.

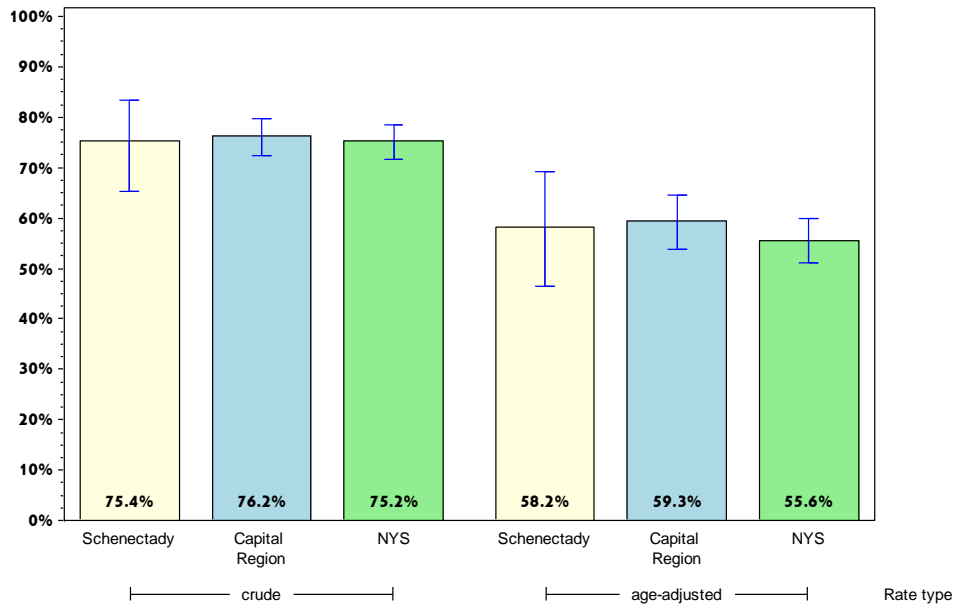
<sup>^</sup> Highly variable rate (confidence interval with a half-width greater than 10).



# Schenectady

## Prevent Chronic Diseases

### Percentage of adults with diagnosed high blood pressure taking high blood pressure medication



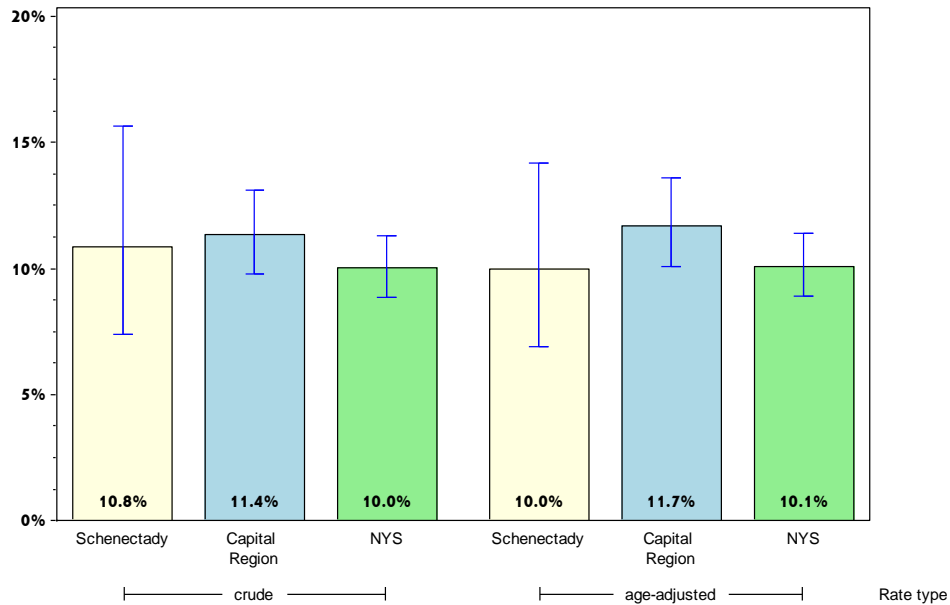
	Schenectady County			Capital Region		
	Est. # of Adults	Percent	95% CI	Est. # of Adults	Percent	95% CI
<b>Total</b>	30,530	75.4 <sup>^</sup>	(65.3-83.3)	184,933	76.2	(72.5-79.6)
<b>Age</b>		#			#	
18-24		#			#	
25-34		#		6,283	36.1 <sup>^</sup>	(17.2-60.7)
35-44		#		16,792	63.1 <sup>^</sup>	(49.8-74.6)
45-64	11,456	75.3 <sup>^</sup>	(55.8-88.0)	76,505	76.4	(70.5-81.4)
65+	13,663	89.6	(80.0-94.9)	79,451	90.6	(87.3-93.1)
<b>Race</b>						
White, NH	25,736	73.5 <sup>^</sup>	(62.5-82.2)	158,180	75.9	(72.1-79.4)
Black, NH		#		12,368	74.1 <sup>^</sup>	(47.5-90.0)
Hispanic		#			#	
Other, NH		#			#	
<b>Sex</b>						
male	15,283	77.5 <sup>^</sup>	(64.9-86.5)	99,560	75.2	(69.6-80.1)
female	15,247	73.4 <sup>^</sup>	(57.4-84.9)	85,373	77.5	(72.4-81.9)
<b>Age-adjusted<sup>&amp;</sup></b>		58.2 <sup>^</sup>	(46.4-69.1)		59.3	(53.7-64.6)

& Percent is age-adjusted to the 2000 United States Population.  
 # Rates with <10 in the numerator or <50 in the denominator are suppressed.  
 ^ Highly variable rate (confidence interval with a half-width greater than 10).

# Schenectady

## Prevent Chronic Diseases

### Percentage of adults with current asthma\*



#### Schenectady County

#### Capital Region

	Est. # of Adults	Percent	95% CI	Est. # of Adults	Percent	95% CI
<b>Total</b>	13,043	10.8	(7.4-15.6)	85,825	11.4	(9.8-13.1)
<b>Age</b>						
18-24	#	#		8,015	8.5	(5.1-13.6)
25-34	3,140	12.8 <sup>^</sup>	(4.7-30.2)	21,480	17.1	(11.8-24.3)
35-44	#	#		14,809	12.8	(9.2-17.6)
45-64	6,806	16.1	(9.5-26.0)	29,947	11.4	(9.1-14.2)
65+	1,339	5.7	(3.0-10.7)	10,717	7.4	(5.9-9.4)
<b>Race</b>						
White, NH	8,661	8.8	(6.3-12.2)	72,459	11.3	(9.6-13.2)
Black, NH	#	#		5,334	14.5 <sup>^</sup>	(7.6-25.7)
Hispanic	#	#		3,520	13.8	(8.0-22.9)
Other, NH	#	#		4,512	9.0 <sup>^</sup>	(4.0-19.1)
<b>Sex</b>						
male	5,324	9.3	(4.8-17.0)	34,052	9.3	(7.2-11.9)
female	7,719	12.3	(7.6-19.2)	51,772	13.3	(11.2-15.8)
<b>Age-adjusted<sup>&amp;</sup></b>		10.0	(6.9-14.2)		11.7	(10.1-13.6)

\* Physician diagnosed asthma.

& Percent is age-adjusted to the 2000 United States Population.

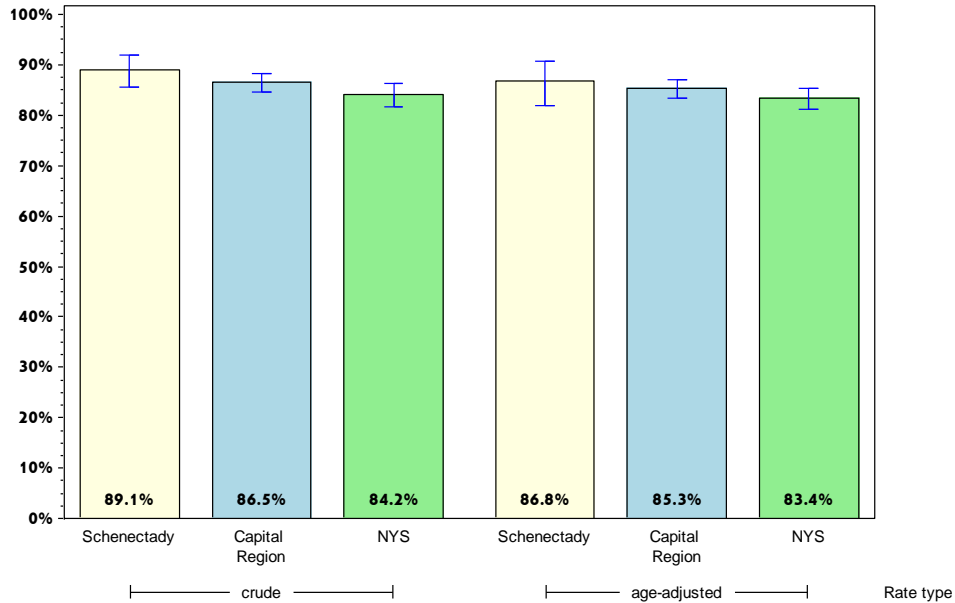
# Rates with <10 in the numerator or <50 in the denominator are suppressed.

<sup>^</sup> Highly variable rate (confidence interval with a half-width greater than 10).

# Schenectady

## Prevent Chronic Diseases

### Percent of adults with cholesterol checked\*



#### Schenectady County

#### Capital Region

	Est. # of Adults	Percent	95% CI	Est. # of Adults	Percent	95% CI
<b>Total</b>	103,692	89.1	(85.5-91.9)	639,140	86.5	(84.7-88.2)
<b>Age</b>		#				
18-24		#		44,907	50.1 <sup>^</sup>	(39.8-60.5)
25-34	17,846	77.6 <sup>^</sup>	(67.1-85.5)	89,079	74.8	(69.7-79.3)
35-44	16,402	89.4 <sup>^</sup>	(76.1-95.8)	100,962	90.2	(86.2-93.1)
45-64	39,910	95.4	(90.1-98.0)	252,435	96.6	(94.9-97.8)
65+	22,915	98.3	(95.5-99.4)	139,365	96.8	(95.2-97.9)
<b>Race</b>						
White, NH	86,149	90.8	(87.0-93.6)	550,269	87.4	(85.4-89.1)
Black, NH		#		30,769	84.0	(74.9-90.3)
Hispanic		#		18,164	74.0	(64.3-81.8)
Other, NH		#		39,939	83.5 <sup>^</sup>	(73.4-90.3)
<b>Sex</b>						
male	48,271	86.9	(80.7-91.4)	304,962	85.4	(82.7-87.7)
female	55,421	91.0	(86.6-94.1)	334,177	87.6	(84.9-89.8)
<b>Age-adjusted<sup>&amp;</sup></b>		86.8	(81.9-90.6)		85.3	(83.3-87.0)

\* As diagnosed by a health professional.

& Percent is age-adjusted to the 2000 United States Population.

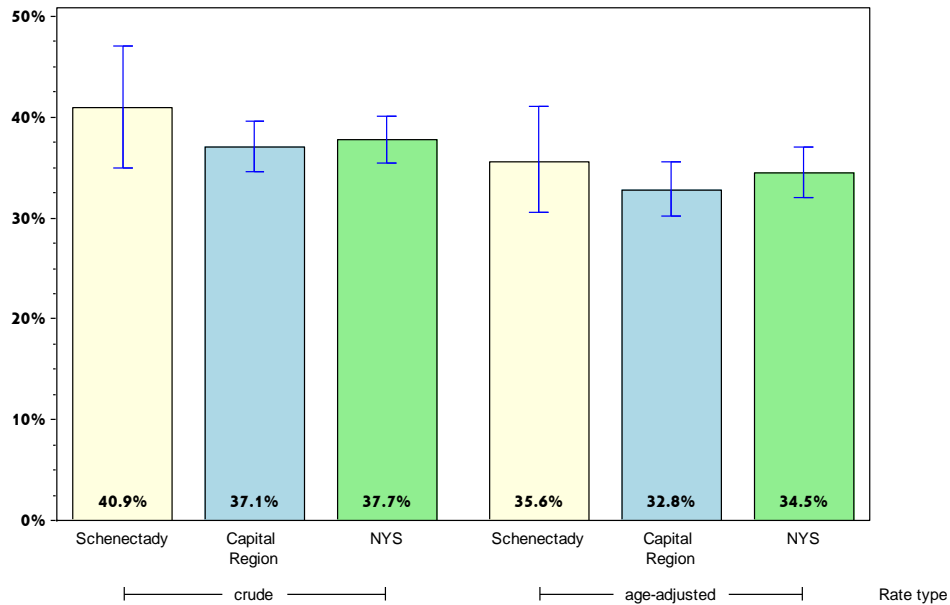
# Rates with <10 in the numerator or <50 in the denominator are suppressed.

<sup>^</sup> Highly variable rate (confidence interval with a half-width greater than 10).

# Schenectady

## Prevent Chronic Diseases

### Percentage of adults 18 years and older with elevated cholesterol\*



#### Schenectady County

#### Capital Region

	Est. # of Adults	Percent	95% CI	Est. # of Adults	Percent	95% CI
<b>Total</b>	42,198	40.9	(34.9-47.1)	235,112	37.1	(34.6-39.6)
<b>Age</b>						
18-24		#		5,953	13.3 <sup>^</sup>	(4.8-31.8)
25-34	2,622	14.7 <sup>^</sup>	(6.3-30.5)	16,241	18.2	(12.4-26.0)
35-44	5,735	35.0 <sup>^</sup>	(22.3-50.1)	24,632	24.4	(19.4-30.3)
45-64	21,208	53.3	(43.8-62.5)	109,820	43.9	(40.1-47.7)
65+	11,496	51.0 <sup>^</sup>	(40.2-61.6)	74,721	54.5	(50.5-58.4)
<b>Race</b>						
White, NH	34,927	40.8	(34.7-47.2)	203,433	37.3	(34.8-39.8)
Black, NH		#		10,346	33.6 <sup>^</sup>	(23.0-46.2)
Hispanic		#		7,318	40.6 <sup>^</sup>	(29.2-53.1)
Other, NH		#		14,016	35.1 <sup>^</sup>	(21.2-52.1)
<b>Sex</b>						
male	19,907	41.4	(33.1-50.3)	113,334	37.5	(33.8-41.5)
female	22,290	40.4	(32.2-49.2)	121,779	36.6	(33.5-39.9)
<b>Age-adjusted<sup>&amp;</sup></b>		35.6	(30.5-41.0)		32.8	(30.1-35.6)

\* As diagnosed by a health professional.

& Percent is age-adjusted to the 2000 United States Population.

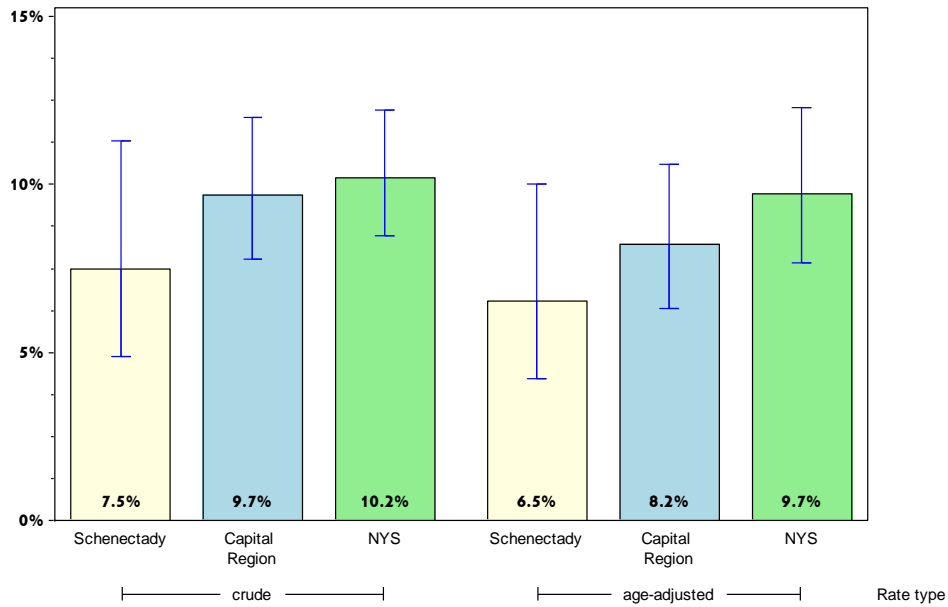
# Rates with <10 in the numerator or <50 in the denominator are suppressed.

<sup>^</sup> Highly variable rate (confidence interval with a half-width greater than 10).

# Schenectady

## Prevent Chronic Diseases

Percentage of adults who have taken a course or class to learn how to manage their chronic disease or condition\*



### Schenectady County

### Capital Region

	Est. # of Adults	Percent	95% CI	Est. # of Adults	Percent	95% CI
<b>Total</b>	4,697	7.5	(4.9-11.3)	38,954	9.7	(7.8-12.0)
<b>Age</b>		#			#	
18-24		#			#	
25-34		#			#	
35-44		#		2,378	4.4	(2.3-8.5)
45-64	2,523	10.9	(5.9-19.3)	16,610	10.3	(7.5-14.0)
65+		#		12,432	11.0	(8.6-13.9)
<b>Race</b>						
White, NH	3,953	7.5	(4.7-11.8)	32,271	9.3	(7.5-11.6)
Black, NH		#		2,454	11.4	(6.3-20.0)
Hispanic		#			#	
Other, NH		#			#	
<b>Sex</b>						
male		#		17,247	9.1	(7.0-11.7)
female	3,280	9.8	(5.8-16.2)	21,707	10.2	(7.3-14.1)
<b>Age-adjusted<sup>&amp;</sup></b>		6.5	(4.2-10.0)		8.2	(6.3-10.6)

\* Courses for high blood pressure, arthritis, or diabetes.

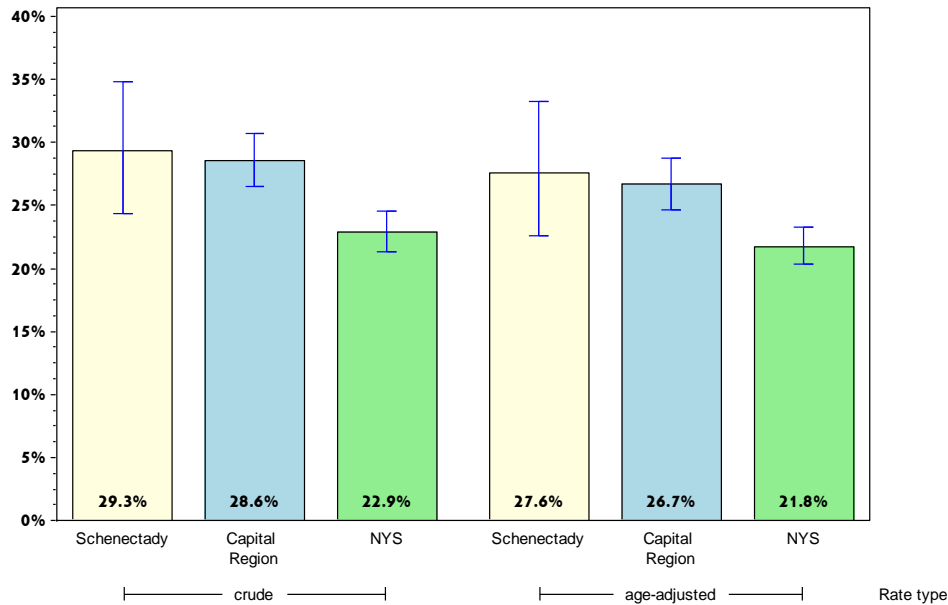
& Percent is age-adjusted to the 2000 United States Population.

# Rates with <10 in the numerator or <50 in the denominator are suppressed.

# Schenectady

## Prevent Chronic Diseases

### Percentage of adults with arthritis\*



#### Schenectady County

#### Capital Region

	Est. # of Adults	Percent	95% CI	Est. # of Adults	Percent	95% CI
<b>Total</b>	35,255	29.3	(24.3-34.8)	215,186	28.6	(26.5-30.7)
<b>Age</b>		#				
18-24		#		5,786	6.1	(2.9-12.1)
25-34		#		9,822	8.0	(5.3-11.9)
35-44	2,179	11.6	(6.0-21.1)	22,489	19.5	(14.0-26.6)
45-64	14,626	34.7	(26.3-44.1)	96,695	36.8	(33.2-40.4)
65+	13,132	55.9 <sup>^</sup>	(45.6-65.7)	77,396	53.7	(49.8-57.5)
<b>Race</b>						
White, NH	28,324	28.9	(23.9-34.5)	186,495	29.1	(27.0-31.3)
Black, NH		#		8,607	23.1	(15.9-32.2)
Hispanic		#		5,766	22.5	(15.2-32.0)
Other, NH		#		14,318	28.7 <sup>^</sup>	(16.8-44.4)
<b>Sex</b>						
male	13,739	24.0	(18.4-30.6)	76,893	21.1	(18.7-23.8)
female	21,516	34.2	(26.7-42.6)	138,293	35.5	(32.5-38.6)
<b>Age-adjusted<sup>&amp;</sup></b>		27.6	(22.6-33.3)		26.7	(24.7-28.8)

\* Includes rheumatoid arthritis, gout, lupus, or fibromyalgia.

& Percent is age-adjusted to the 2000 United States Population.

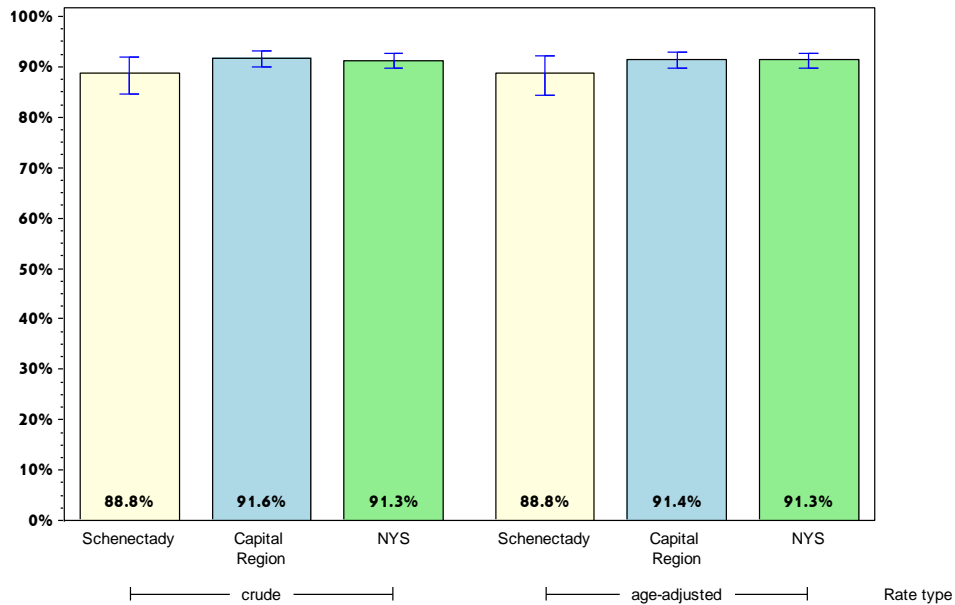
# Rates with <10 in the numerator or <50 in the denominator are suppressed.

<sup>^</sup> Highly variable rate (confidence interval with a half-width greater than 10).

# Schenectady

## Promote a Healthy and Safe Environment

### Percentage of adults who consider their neighborhood suitable for walking and physical activity



#### Schenectady County

#### Capital Region

	Est. # of Adults	Percent	95% CI	Est. # of Adults	Percent	95% CI
<b>Total</b>	101,199	88.8	(84.5-92.0)	655,340	91.6	(89.8-93.0)
<b>Age</b>		#				
18-24		#		77,470	89.2	(79.8-94.5)
25-34	19,675	83.2 <sup>^</sup>	(70.0-91.4)	102,214	86.1	(79.6-90.7)
35-44	16,055	88.9 <sup>^</sup>	(77.4-94.9)	102,548	93.2	(90.0-95.4)
45-64	35,467	88.9	(81.5-93.6)	234,077	92.8	(90.3-94.7)
65+	20,924	95.4	(87.5-98.4)	128,519	94.2	(92.1-95.7)
<b>Race</b>						
White, NH	83,877	89.5	(84.8-92.8)	565,421	92.4	(90.7-93.8)
Black, NH		#		29,736	87.1	(79.3-92.3)
Hispanic		#		20,397	90.9	(85.2-94.5)
Other, NH		#		39,787	84.2 <sup>^</sup>	(67.8-93.1)
<b>Sex</b>						
male	49,820	90.0	(83.6-94.1)	318,464	92.0	(89.0-94.3)
female	51,379	87.6	(81.3-92.0)	336,877	91.1	(89.1-92.8)
<b>Age-adjusted<sup>&amp;</sup></b>		88.8	(84.2-92.1)		91.4	(89.6-92.9)

& Percent is age-adjusted to the 2000 United States Population.

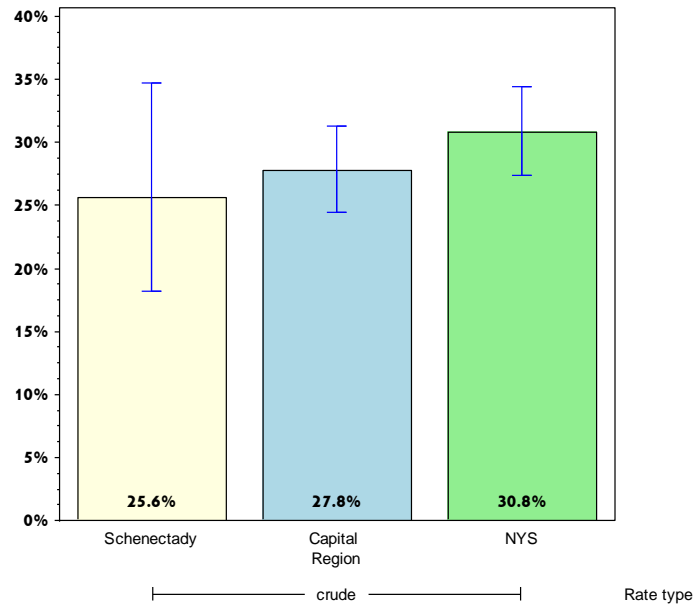
# Rates with <10 in the numerator or <50 in the denominator are suppressed.

<sup>^</sup> Highly variable rate (confidence interval with a half-width greater than 10).

# Schenectady

## Promote a Health and Safe Environment

Percentage of adults aged 65+ years with at least one fall in the past 12 months



### Schenectady County

### Capital Region

	Est. # of Adults	Percent	95% CI	Est. # of Adults	Percent	95% CI
<b>Total Age<sup>+</sup></b>	5,630	25.6	(18.2-34.7)	38,155	27.8	(24.5-31.3)
18-24						
25-34						
35-44						
45-64						
65+						
<b>Race</b>						
White, NH	5,298	28.2	(20.5-37.5)	36,209	28.6	(25.2-32.3)
Black, NH		#			#	
Hispanic		#			#	
Other, NH		#			#	
<b>Sex</b>						
male	2,520	28.0 <sup>^</sup>	(16.4-43.4)	15,469	25.5	(20.9-30.7)
female	3,110	23.9 <sup>^</sup>	(15.3-35.4)	22,685	29.6	(25.1-34.5)
<b>Age-adjusted<sup>+,&amp;</sup></b>						

& Percent is age-adjusted to the 2000 United States Population.

+ Age-adjusted and age specific percent not generated for health indicators with age range limits.

# Rates with <10 in the numerator or <50 in the denominator are suppressed.

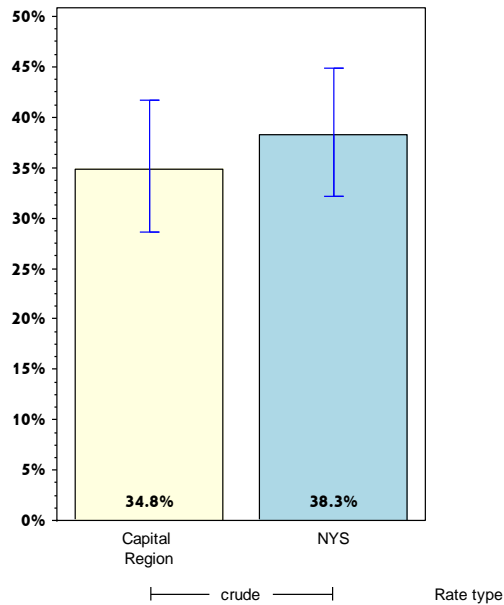
<sup>^</sup> Highly variable rate (confidence interval with a half-width greater than 10).



# Schenectady

## Promote a Health and Safe Environment

Among adults aged 65+ years with at least one fall in the past 12 months, percent that resulted in injury\*



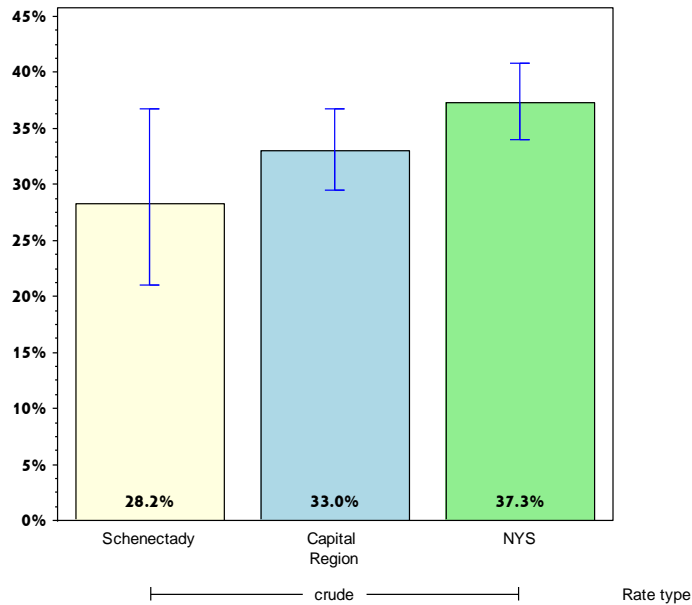
	Schenectady County			Capital Region		
	Est. # of Adults	Percent	95% CI	Est. # of Adults	Percent	95% CI
<b>Total Age<sup>+</sup></b>		#		13,231	34.8	(28.6-41.7)
18-24						
25-34						
35-44						
45-64						
65+						
<b>Race</b>						
White, NH		#		12,411	34.4	(28.1-41.4)
Black, NH		#			#	
Hispanic		#			#	
Other, NH		#			#	
<b>Sex</b>						
male		#		4,370	28.2 <sup>^</sup>	(19.7-38.7)
female		#		8,861	39.4	(30.9-48.5)
<b>Age-adjusted<sup>+,&amp;</sup></b>						

\* Falls that limited regular activities or lead to doctor visits.  
 & Percent is age-adjusted to the 2000 United States Population.  
 + Age-adjusted and age specific percent not generated for health indicators with age range limits.  
 # Rates with <10 in the numerator or <50 in the denominator are suppressed.  
 ^ Highly variable rate (confidence interval with a half-width greater than 10).

# Schenectady

## Prevent HIV/STDs, Vaccine Preventable Diseases and Healthcare-Associated Infections

### Percentage of adults aged 47-68 years reporting ever tested for Hepatitis C (HCV)



#### Schenectady County

#### Capital Region

	Est. # of Adults	Percent	95% CI	Est. # of Adults	Percent	95% CI
<b>Total</b>	10,346	28.2	(21.0-36.8)	76,642	33.0	(29.5-36.7)
<b>Age<sup>+</sup></b>						
18-24						
25-34						
35-44						
45-64						
65+						
<b>Race</b>						
White, NH	8,454	28.4	(20.9-37.4)	67,188	33.0	(29.3-36.9)
Black, NH		#		4,175	45.6 <sup>^</sup>	(27.9-64.4)
Hispanic		#			#	
Other, NH		#			#	
<b>Sex</b>						
male	5,529	31.7 <sup>^</sup>	(21.3-44.3)	42,342	37.1	(31.6-42.9)
female	4,817	25.1 <sup>^</sup>	(16.1-37.0)	34,300	29.1	(24.6-34.0)
<b>Age-adjusted<sup>+,&amp;</sup></b>						

& Percent is age-adjusted to the 2000 United States Population.

+ Age-adjusted and age specific percent not generated for health indicators with age range limits.

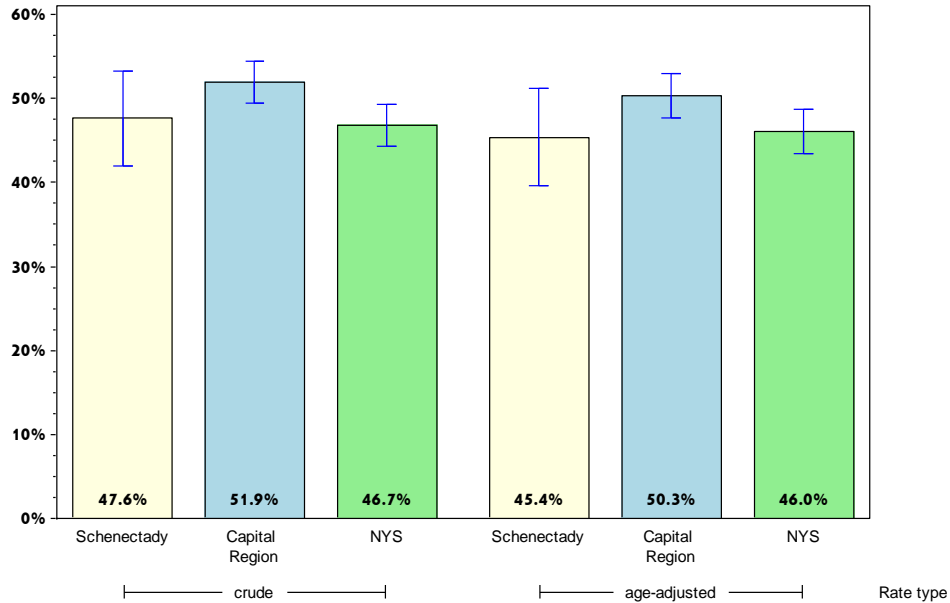
# Rates with <10 in the numerator or <50 in the denominator are suppressed.

<sup>^</sup> Highly variable rate (confidence interval with a half-width greater than 10).

# Schenectady

## Prevent HIV/STDs, Vaccine Preventable Diseases and Healthcare-Associated Infections

### Percentage of adults aged 18+ years with flu immunization in the past year\*



	Schenectady County			Capital Region		
	Est. # of Adults	Percent	95% CI	Est. # of Adults	Percent	95% CI
<b>Total</b>	54,568	47.6	(42.0-53.3)	374,103	51.9	(49.4-54.4)
<b>Age</b>		#				
18-24		#		39,893	45.7 <sup>^</sup>	(35.3-56.5)
25-34	8,918	37.8 <sup>^</sup>	(25.0-52.7)	43,833	36.8	(30.7-43.4)
35-44	5,317	29.0 <sup>^</sup>	(18.4-42.5)	47,801	43.1	(36.6-49.8)
45-64	18,007	45.3	(36.5-54.3)	130,568	51.5	(47.7-55.2)
65+	17,201	76.9	(67.4-84.2)	104,721	75.8	(72.3-78.9)
<b>Race</b>						
White, NH	42,811	45.5	(39.8-51.4)	318,858	51.8	(49.2-54.3)
Black, NH		#		14,742	43.2 <sup>^</sup>	(31.3-55.9)
Hispanic		#		10,649	46.5 <sup>^</sup>	(36.6-56.8)
Other, NH		#		29,854	62.7 <sup>^</sup>	(49.2-74.6)
<b>Sex</b>						
male	22,944	41.2	(33.4-49.5)	168,675	48.4	(44.6-52.2)
female	31,624	53.7	(46.0-61.3)	205,428	55.2	(51.9-58.5)
<b>Age-adjusted<sup>&amp;</sup></b>		45.4	(39.6-51.3)		50.3	(47.7-53.0)

\* Includes flu shot or flu spray

& Percent is age-adjusted to the 2000 United States Population.

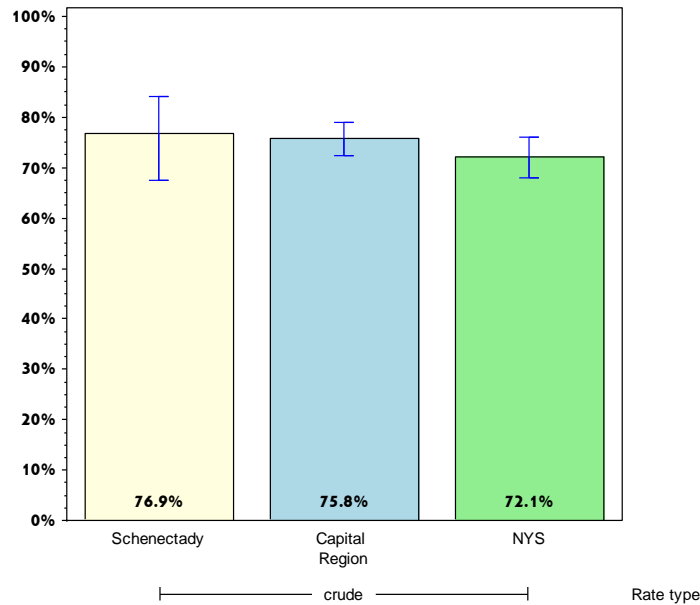
# Rates with <10 in the numerator or <50 in the denominator are suppressed.

<sup>^</sup> Highly variable rate (confidence interval with a half-width greater than 10).

# Schenectady

## Prevent HIV/STDs, Vaccine Preventable Diseases and Healthcare-Associated Infections

### Percentage of adults aged 65+ years with flu immunization in the past year\*



#### Schenectady County

#### Capital Region

	Est. # of Adults	Percent	95% CI	Est. # of Adults	Percent	95% CI
<b>Total Age<sup>+</sup></b>	17,201	76.9	(67.4-84.2)	104,721	75.8	(72.3-78.9)
18-24						
25-34						
35-44						
45-64						
65+						
<b>Race</b>						
White, NH	14,290	74.9	(65.0-82.7)	96,169	75.6	(72.0-78.8)
Black, NH		#			#	
Hispanic		#			#	
Other, NH		#			#	
<b>Sex</b>						
male	6,185	67.4 <sup>^</sup>	(50.6-80.7)	44,927	73.5	(67.8-78.5)
female	11,016	83.5	(74.0-90.0)	59,794	77.6	(73.3-81.4)
<b>Age-adjusted<sup>+,&amp;</sup></b>						

\* Includes flu shot or flu spray

& Percent is age-adjusted to the 2000 United States Population.

+ Age-adjusted and age specific percent not generated for health indicators with age range limits.

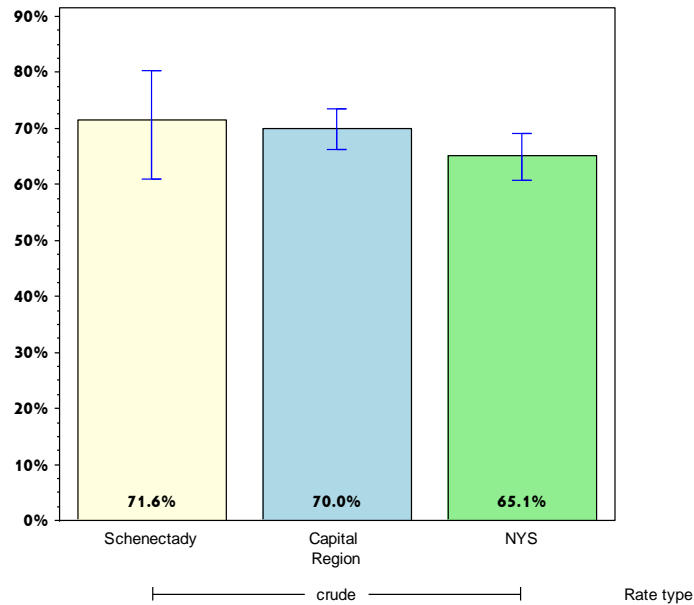
# Rates with <10 in the numerator or <50 in the denominator are suppressed.

<sup>^</sup> Highly variable rate (confidence interval with a half-width greater than 10).

# Schenectady

## Prevent HIV/STDs, Vaccine Preventable Diseases and Healthcare-Associated Infections

### Percentage of adults aged 65+ years with pneumococcal immunization



#### Schenectady County

#### Capital Region

	Est. # of Adults	Percent	95% CI	Est. # of Adults	Percent	95% CI
<b>Total</b>	15,051	71.6 <sup>^</sup>	(60.9-80.3)	92,729	70.0	(66.2-73.5)
<b>Age<sup>+</sup></b>						
18-24						
25-34						
35-44						
45-64						
65+						
<b>Race</b>						
White, NH	12,702	71.6 <sup>^</sup>	(61.0-80.3)	86,365	71.1	(67.2-74.6)
Black, NH		#			#	
Hispanic		#			#	
Other, NH		#			#	
<b>Sex</b>						
male	5,554	68.5 <sup>^</sup>	(50.6-82.2)	36,740	63.6	(57.5-69.3)
female	9,497	73.5 <sup>^</sup>	(59.8-83.8)	55,989	74.9	(70.2-79.2)
<b>Age-adjusted<sup>+,&amp;</sup></b>						

& Percent is age-adjusted to the 2000 United States Population.

+ Age-adjusted and age specific percent not generated for health indicators with age range limits.

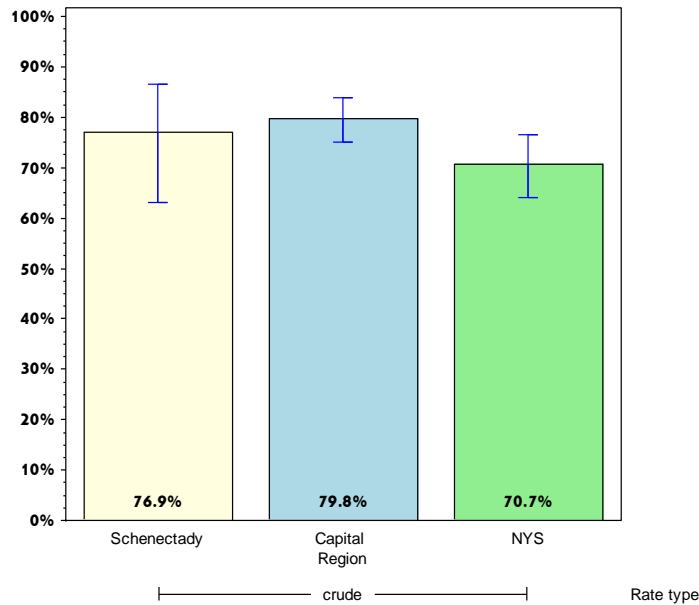
# Rates with <10 in the numerator or <50 in the denominator are suppressed.

<sup>^</sup> Highly variable rate (confidence interval with a half-width greater than 10).

# Schenectady

## Promote Healthy Women, Infants, and Children

Percentage of women aged 18-44 years who had dental visit within the last year



### Schenectady County

### Capital Region

	Est. # of Adults	Percent	95% CI	Est. # of Adults	Percent	95% CI
<b>Total</b>	17,637	76.9 <sup>^</sup>	(63.2-86.6)	120,363	79.8	(75.1-83.8)
<b>Age<sup>+</sup></b>						
18-24						
25-34						
35-44						
45-64						
65+						
<b>Race</b>						
White, NH	14,651	84.2 <sup>^</sup>	(68.9-92.7)	97,127	82.5	(77.5-86.6)
Black, NH		#			#	
Hispanic		#			#	
Other, NH		#			#	
<b>Sex</b>						
male		#			#	
female	17,637	76.9 <sup>^</sup>	(63.2-86.6)	120,363	79.8	(75.1-83.8)
<b>Age-adjusted<sup>+,&amp;</sup></b>						

& Percent is age-adjusted to the 2000 United States Population.

+ Age-adjusted and age specific percent not generated for health indicators with age range limits.

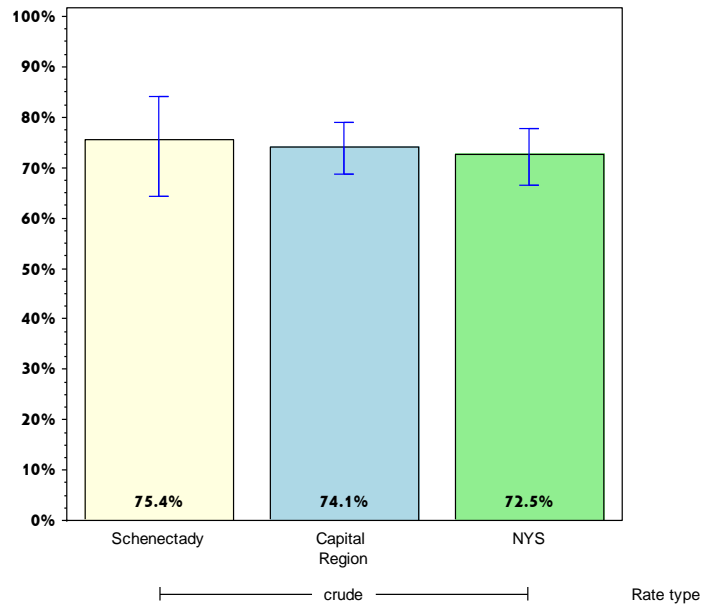
# Rates with <10 in the numerator or <50 in the denominator are suppressed.

<sup>^</sup> Highly variable rate (confidence interval with a half-width greater than 10).

# Schenectady

## Promote Healthy Women, Infants, and Children

Women aged 18-44 years who saw a doctor for a routine checkup within the last year



	Schenectady County			Capital Region		
	Est. # of Adults	Percent	95% CI	Est. # of Adults	Percent	95% CI
<b>Total</b>	18,522	75.4 <sup>^</sup>	(64.3-84.0)	119,498	74.1	(68.6-79.0)
<b>Age<sup>+</sup></b>						
18-24						
25-34						
35-44						
45-64						
65+						
<b>Race</b>						
White, NH	13,355	72.9 <sup>^</sup>	(58.9-83.5)	91,769	72.7	(66.2-78.4)
Black, NH		#		9,034	73.0 <sup>^</sup>	(53.7-86.3)
Hispanic		#		4,441	65.9 <sup>^</sup>	(48.1-80.1)
Other, NH		#			#	
<b>Sex</b>						
male		#			#	
female	18,522	75.4 <sup>^</sup>	(64.3-84.0)	119,498	74.1	(68.6-79.0)
<b>Age-adjusted<sup>+,&amp;</sup></b>						

& Percent is age-adjusted to the 2000 United States Population.

+ Age-adjusted and age specific percent not generated for health indicators with age range limits.

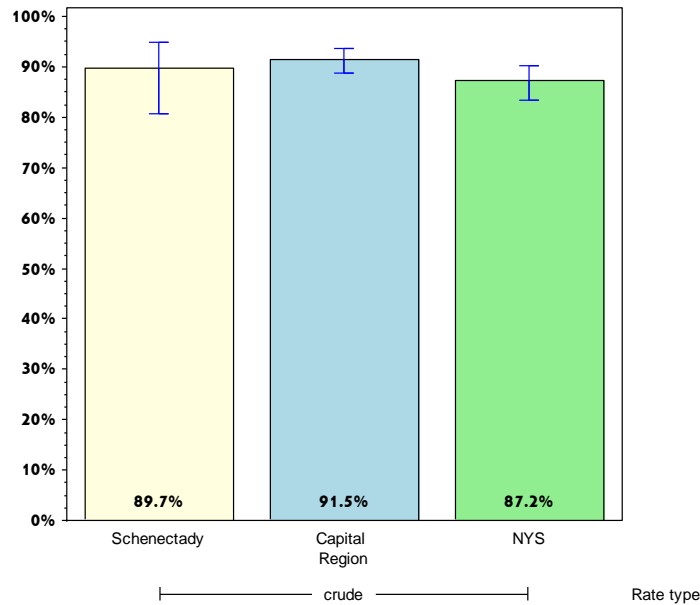
# Rates with <10 in the numerator or <50 in the denominator are suppressed.

<sup>^</sup> Highly variable rate (confidence interval with a half-width greater than 10).

# Schenectady

## Promote Healthy Women, Infants, and Children

### Percentage of women aged 18-64 years with health care coverage



#### Schenectady County

#### Capital Region

	Est. # of Adults	Percent	95% CI	Est. # of Adults	Percent	95% CI
<b>Total Age<sup>+</sup></b>	43,331	89.7	(80.6-94.8)	272,288	91.5	(88.8-93.5)
18-24						
25-34						
35-44						
45-64						
65+						
<b>Race</b>						
White, NH	35,985	92.7	(86.5-96.2)	231,253	92.5	(89.8-94.6)
Black, NH		#		13,163	85.1 <sup>^</sup>	(67.6-94.0)
Hispanic		#		7,840	79.4 <sup>^</sup>	(67.0-88.0)
Other, NH		#		20,032	89.6 <sup>^</sup>	(68.0-97.2)
<b>Sex</b>						
male		#			#	
female	43,331	89.7	(80.6-94.8)	272,288	91.5	(88.8-93.5)
<b>Age-adjusted<sup>+,&amp;</sup></b>						

& Percent is age-adjusted to the 2000 United States Population.

+ Age-adjusted and age specific percent not generated for health indicators with age range limits.

# Rates with <10 in the numerator or <50 in the denominator are suppressed.

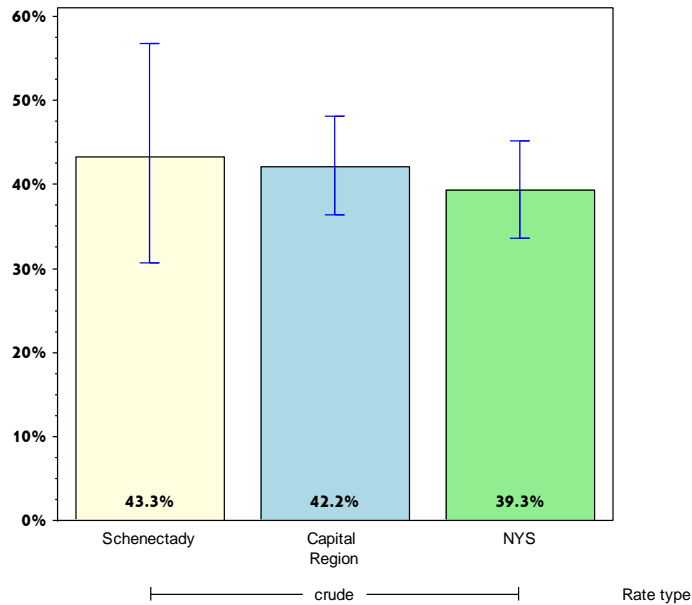
<sup>^</sup> Highly variable rate (confidence interval with a half-width greater than 10).



# Schenectady

## Promote Healthy Women, Infants, and Children

Percentage of women aged 18-44 years whose health care provider discussed planning a healthy pregnancy



### Schenectady County

### Capital Region

	Est. # of Adults	Percent	95% CI	Est. # of Adults	Percent	95% CI
<b>Total</b>	9,920	43.3 <sup>^</sup>	(30.7-56.8)	63,605	42.2	(36.4-48.1)
<b>Age<sup>+</sup></b>						
18-24						
25-34						
35-44						
45-64						
65+						
<b>Race</b>						
White, NH	6,731	38.7 <sup>^</sup>	(25.2-54.1)	51,464	43.9	(37.5-50.6)
Black, NH		#			#	
Hispanic		#			#	
Other, NH		#			#	
<b>Sex</b>						
male		#			#	
female	9,920	43.3 <sup>^</sup>	(30.7-56.8)	63,605	42.2	(36.4-48.1)
<b>Age-adjusted<sup>+,&amp;</sup></b>						

& Percent is age-adjusted to the 2000 United States Population.

+ Age-adjusted and age specific percent not generated for health indicators with age range limits.

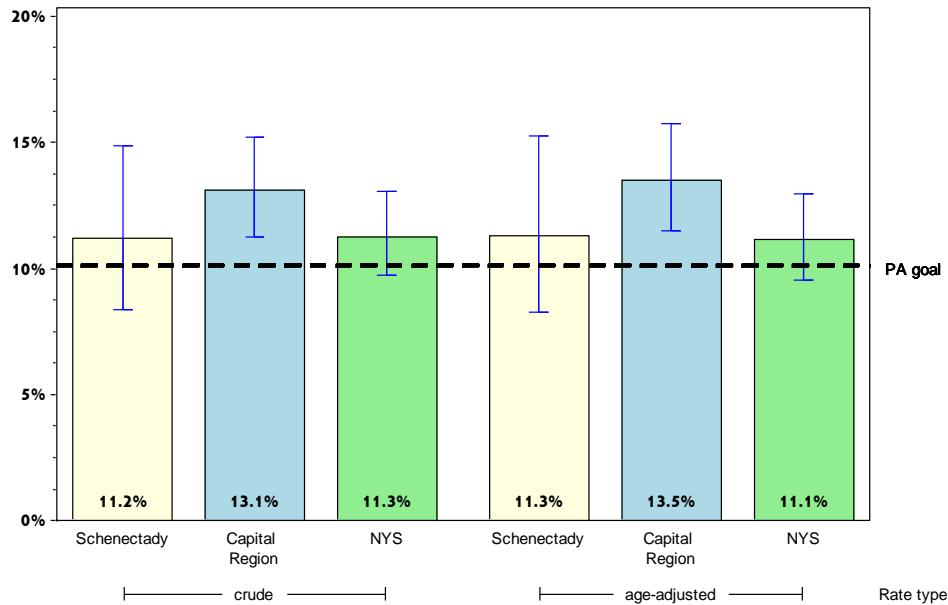
# Rates with <10 in the numerator or <50 in the denominator are suppressed.

<sup>^</sup> Highly variable rate (confidence interval with a half-width greater than 10).

# Schenectady

## Promote Mental Health and Prevention Substance Abuse

Percentage of adults with poor mental health for 14 or more days in the last month



### Schenectady County

### Capital Region

	Est. # of Adults	Percent	95% CI	Est. # of Adults	Percent	95% CI
<b>Total</b>	13,234	11.2	(8.3-14.8)	97,381	13.1	(11.2-15.2)
<b>Age</b>		#				
18-24		#		15,415	16.5	(10.0-25.9)
25-34	2,859	12.1 <sup>^</sup>	(6.2-22.1)	21,884	17.7	(12.4-24.8)
35-44		#		15,297	13.4	(9.0-19.6)
45-64	5,960	14.3	(9.3-21.4)	35,365	13.7	(11.1-16.8)
65+		#		8,895	6.3	(4.5-8.8)
<b>Race</b>						
White, NH	10,684	11.1	(7.9-15.3)	77,087	12.2	(10.3-14.4)
Black, NH		#		10,860	29.8 <sup>^</sup>	(18.5-44.2)
Hispanic		#		4,600	19.0	(12.7-27.4)
Other, NH		#		4,834	9.7 <sup>^</sup>	(4.2-20.9)
<b>Sex</b>						
male	6,965	12.2	(7.8-18.6)	45,948	12.7	(9.9-16.1)
female	6,269	10.2	(7.1-14.6)	51,433	13.5	(11.2-16.2)
<b>Age-adjusted<sup>&amp;</sup></b>		11.3	(8.3-15.2)		13.5	(11.5-15.7)

& Percent is age-adjusted to the 2000 United States Population.

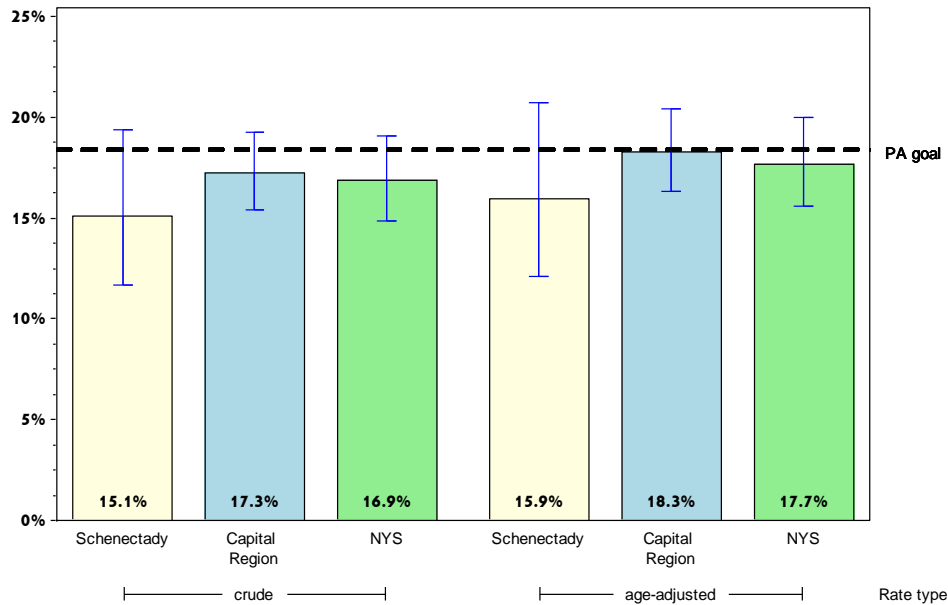
# Rates with <10 in the numerator or <50 in the denominator are suppressed.

<sup>^</sup> Highly variable rate (confidence interval with a half-width greater than 10).

# Schenectady

## Promote Mental Health and Prevention Substance Abuse

### Percentage of adult binge drinking during the past month\*



#### Schenectady County

#### Capital Region

	Est. # of Adults	Percent	95% CI	Est. # of Adults	Percent	95% CI
<b>Total</b>	17,434	15.1	(11.6-19.4)	124,613	17.3	(15.4-19.3)
<b>Age</b>		#				
18-24		#		26,578	29.9 <sup>^</sup>	(21.5-40.0)
25-34	6,369	26.8 <sup>^</sup>	(16.6-40.2)	33,259	27.9	(22.6-33.9)
35-44	3,765	20.7 <sup>^</sup>	(11.7-33.9)	21,657	19.6	(15.1-25.1)
45-64	4,729	11.7	(7.5-17.7)	35,598	14.0	(11.9-16.6)
65+		#		6,695	4.8	(3.4-6.8)
<b>Race</b>						
White, NH	14,852	15.7	(11.9-20.4)	109,332	17.7	(15.8-19.8)
Black, NH		#		6,496	18.9 <sup>^</sup>	(9.3-34.8)
Hispanic		#		3,636	15.3	(9.8-23.0)
Other, NH		#		5,148	11.1 <sup>^</sup>	(4.9-23.0)
<b>Sex</b>						
male	10,893	19.6	(14.2-26.5)	76,161	21.9	(19.0-25.1)
female	6,541	10.9	(7.1-16.5)	48,452	12.9	(10.7-15.5)
<b>Age-adjusted<sup>&amp;</sup></b>		15.9	(12.1-20.7)		18.3	(16.3-20.4)

\* Men who have five or more drinks, women having four or more drinks on one occasion

& Percent is age-adjusted to the 2000 United States Population.

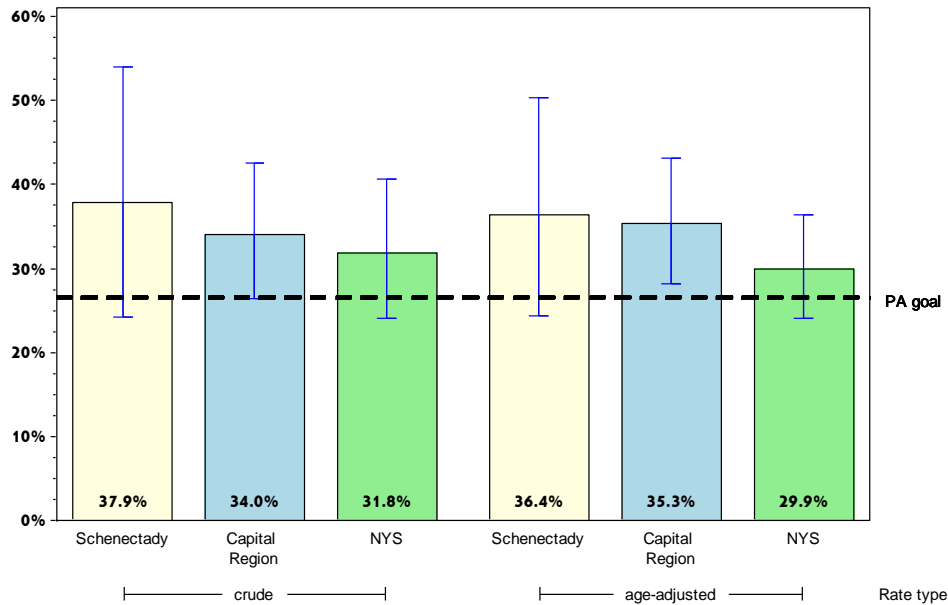
# Rates with <10 in the numerator or <50 in the denominator are suppressed.

<sup>^</sup> Highly variable rate (confidence interval with a half-width greater than 10).

# Schenectady

## Promote Mental Health and Prevention Substance Abuse

### Percentage of cigarette smoking among adults who report poor mental health



#### Schenectady County

#### Capital Region

	Est. # of Adults	Percent	95% CI	Est. # of Adults	Percent	95% CI
<b>Total</b>	4,815	37.9 <sup>^</sup>	(24.1-54.0)	32,029	34.0	(26.4-42.5)
<b>Age</b>		#			#	
18-24		#			#	
25-34		#		8,601	39.7 <sup>^</sup>	(22.1-60.5)
35-44		#			#	
45-64		#		10,462	29.8 <sup>^</sup>	(20.9-40.6)
65+		#			#	
<b>Race</b>						
White, NH		#		25,081	33.3	(25.0-42.8)
Black, NH		#			#	
Hispanic		#			#	
Other, NH		#			#	
<b>Sex</b>						
male		#		17,555	39.9 <sup>^</sup>	(27.2-54.2)
female		#		14,474	28.8	(20.8-38.5)
<b>Age-adjusted<sup>&amp;</sup></b>		36.4 <sup>^</sup>	(24.4-50.3)		35.3	(28.2-43.2)

& Percent is age-adjusted to the 2000 United States Population.

# Rates with <10 in the numerator or <50 in the denominator are suppressed.

<sup>^</sup> Highly variable rate (confidence interval with a half-width greater than 10).