

eBRFSS 2013-2014 Health Indicators: Greene

General Description	2
Improve Health Status and Reduce Health Disparities	3
Percentage of adults who did not receive medical care because of cost	3
Percentage of adults who have a regular health care provider	4
Percentage of adults who had a dentist visit within the past year	5
Percentage of adults living with a disability.....	6
Percentage of adults aged 18-64 years with healthcare coverage	7
Percentage of adults aged 18-64 years who saw a doctor for a routine checkup within the last year	8
Percentage of adults experiencing housing insecurity in the past 12 months.....	9
Percentage of adults experiencing food insecurity in the past 12 months.....	10
Percentage of adults with poor self-reported health	11
Percentage of adults who report 14 or more days of poor physical health.....	12
Prevent Chronic Diseases	13
Percentage of adults who are obese	13
Percentage of adults with an annual household income less than \$25,000 who are obese	14
Percentage of adults living with a disability who are obese	15
Percentage of adults overweight or obese	16
Percentage of adults who participated in leisure time physical activity in the past 30 days.....	17
Percentage of adults who consume one or more sugary drinks daily	18
Percentage of adults who consume fast-food three or more times per week	19
Percentage of adults with physician diagnosed diabetes	20
Percentage of adults who are current smokers	21
Percentage of adults with annual household income less than \$25,000 who are current smokers	22
Percentage of adults aged 18-24 years who are current smokers.....	23
Percentage of women aged 50-74 years receiving breast cancer screening based on recent guidelines	24
Percentage of women aged 50-74 years with annual household income of less than \$25,000 receiving breast cancer screening based on recent guidelines.....	25
Percentage of women aged 21-65 years receiving cervical cancer screening based on recent guidelines	26
Percentage of women aged 21-65 years with annual household income of less than \$25,000 receiving cervical cancer screening based on recent guidelines.....	27
Percentage of adults aged 50-75 years receiving colorectal cancer screening based on recent guidelines.....	28
Percentage of adults aged 50-75 years with annual household income less than \$25,000 receiving colorectal cancer screening based on recent guidelines.....	29
Percentage of adults who had a test for high blood sugar or diabetes within the past three years	30
Percentage of adults with physician-diagnosed prediabetes	31
Percentage of adults with physician-diagnosed high blood pressure.....	32
Percentage of adults with diagnosed high blood pressure taking high blood pressure medication	33
Percentage of adults with current asthma	34
Percent of adults with cholesterol checked.....	35
Percentage of adults 18 years and older with elevated cholesterol.....	36
Percentage of adults who have taken a course or class to learn how to manage their chronic disease or condition	37
Percentage of adults with arthritis	38
Promote a Healthy and Safe Environment	39
Percentage of adults who consider their neighborhood suitable for walking and physical activity.....	39
Percentage of adults aged 65+ years with at least one fall in the past 12 months.....	40
Among adults aged 65+ years with at least one fall in the past 12 months, percent that resulted in injury.....	41
Prevent HIV/STDs, Vaccine Preventable Diseases and Healthcare-Associated Infections.....	42
Percentage of adults aged 47-68 years reporting ever tested for Hepatitis C (HCV).....	42
Percentage of adults aged 18+ years with flu immunization in the past year	43
Percentage of adults aged 65+ years with flu immunization in the past year	44
Percentage of adults aged 65+ years with pneumococcal immunization.....	45
Promote Healthy Women, Infants, and Children	46
Percentage of women aged 18-44 years who had dental visit within the last year	46
Women aged 18-44 years who saw a doctor for a routine checkup within the last year.....	47
Percentage of women aged 18-64 years with health care coverage	48
Percentage of women aged 18-44 years whose health care provider discussed planning a healthy pregnancy	49
Promote Mental Health and Prevention Substance Abuse	50
Percentage of adults with poor mental health for 14 or more days in the last month	50
Percentage of adult binge drinking during the past month	51
Percentage of cigarette smoking among adults who report poor mental health.....	52

General Description

The New York State Expanded Behavioral Risk Factor Surveillance System 2013-2014 (2014 eBRFSS) was design to supplement the Center for Disease Control and Prevention (CDC) Behavioral Risk Factor Surveillance System (BRFSS), which is conducted annually in New York State. The purpose of the 2014 eBRFSS was to produce local information on key public health issues. Data for the project were collected from April 15, 2013 to May 10, 2014. The 2014 eBRFSS reached both households with landline telephones and households which only had cell phones. Like the annual BRFSS, New York State's 2014 eBRFSS was designed to be representative of the non-institutionalized adult household population, aged 18 years and older.

Reported Health Indicators

There are a total of 50 health indicators included in the report. The health indicators include 10 measures included in the New York State Department of Health's Prevention Agenda, NYS Health Innovation Plan (SHIP), Delivery System Reform Incentive Payment (DSRIP) Program, or the NYS Community Health Indicator Reports (CHIRS). An additional 40 important health indicators are also included. The indicators are organized by the Priority Area of the Prevention Agenda and are reported statewide, by region, and by county.

Data Collection Methodology, Sampling and Weighting

The data collection methods for the 2014 eBRFSS aligned with the CDC's standard annual BRFSS methods. The 2014 eBRFSS questionnaire used standard questions from the BRFSS. Survey interviews were conducted in both English and Spanish. There were 31,690 completed interviews.

The sampling plan for the eBRFSS was developed to result in valid health indicator estimates for New York City (NYC) and each of the 57 counties outside NYC. The sampling approach stratified landlines by county and implemented a disproportionate stratified sampling design that accounted for both listed-households and unlisted numbers. Cell phone households were accounted for through additional strata that covered contiguous groups of counties.

Data were weighted to represent the population using a methodology known as iterative proportional fitting (raking). Raking adjusted the data so that groups underrepresented in the sample were more accurately represented in the estimated rates. Raking also enabled surveys conducted by cell phone to be included in the weighting and to accurately match sample distributions of specified demographic characteristics of the population. The raking categories included in the eBRFSS were: age, gender, race/ethnicity, education, marital status, owner/renter status, telephone usage (i.e. landline and cell phone combinations), and county of residence.

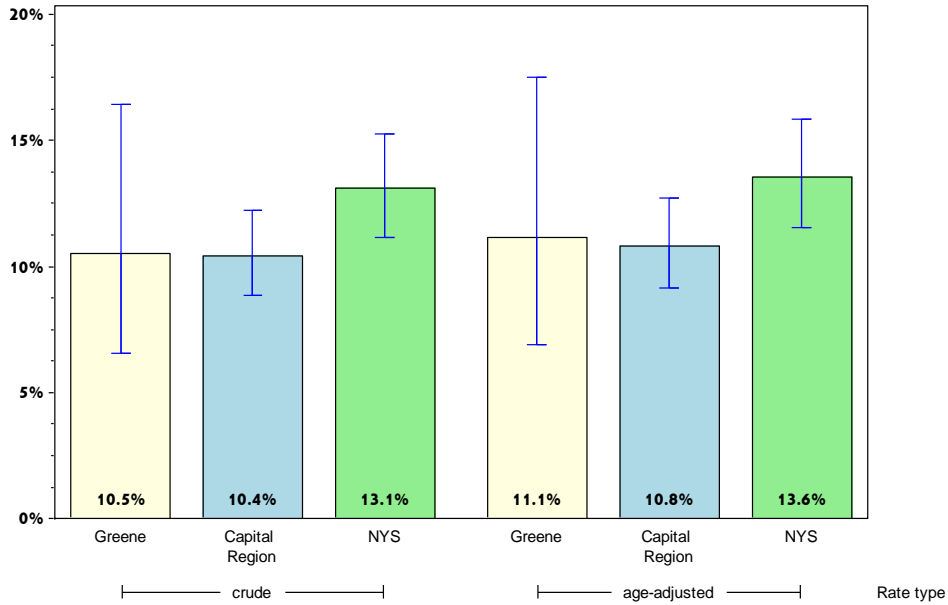
Limitations of Data Use:

During data analysis, criteria were applied to suppress rates based on too few surveys to be reliable and to identify rates that are highly variable. Rates in which less than 10 respondents were in the numerator or less than 50 respondents were in the denominator were considered unreliable and suppressed from reporting. Rates considered to have high variability due to having confidence limits greater than $\pm 10\%$ are noted.

Greene

Improve Health Status and Reduce Health Disparities

Percentage of adults who did not receive medical care because of cost*



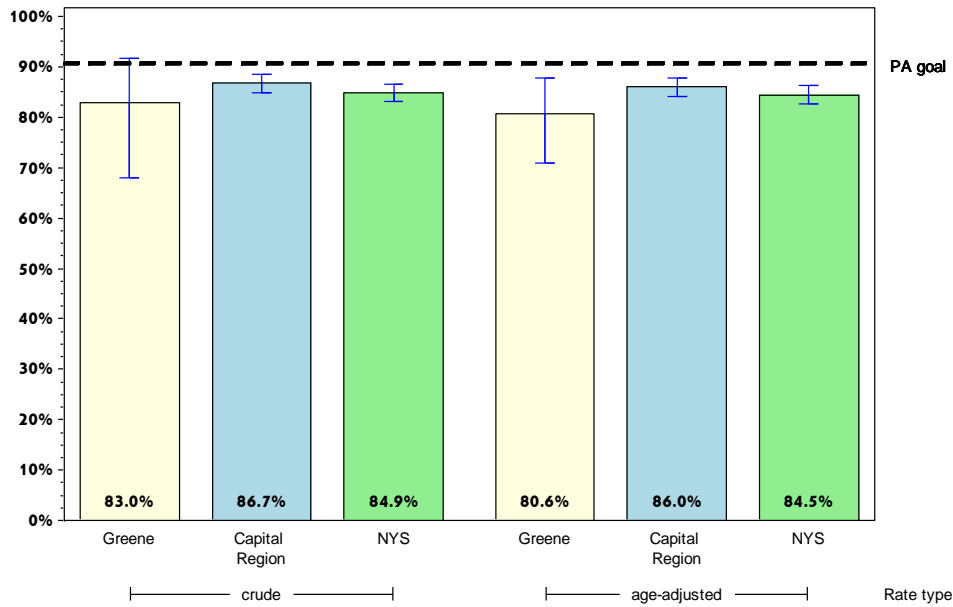
	Greene County			Capital Region		
	Est. # of Adults	Percent	95% CI	Est. # of Adults	Percent	95% CI
Total	4,170	10.5	(6.5-16.4)	78,780	10.4	(8.9-12.2)
Age						
18-24		#		9,000	9.5	(5.8-15.1)
25-34		#		21,597	17.3	(12.2-23.9)
35-44		#		12,616	11.0	(7.4-16.0)
45-64	1,798	12.5	(7.2-20.8)	29,082	11.0	(8.6-14.1)
65+		#		6,173	4.3	(2.9-6.2)
Race						
White, NH	2,570	8.4	(5.5-12.5)	61,538	9.6	(7.9-11.5)
Black, NH		#		5,810	15.6	(10.2-23.1)
Hispanic		#		6,161	24.0	(16.3-33.9)
Other, NH		#		5,270	10.6 [^]	(4.3-24.0)
Sex						
male	2,764	13.2 [^]	(6.8-24.2)	35,709	9.7	(7.5-12.5)
female	1,405	7.4	(4.1-13.1)	43,071	11.1	(9.0-13.6)
Age-adjusted^{&}		11.1	(6.9-17.5)		10.8	(9.2-12.7)

* Among people needing to see a doctor in the past 12 months
 & Percent is age-adjusted to the 2000 United States Population.
 # Rates with <10 in the numerator or <50 in the denominator are suppressed.
 ^ Highly variable rate (confidence interval with a half-width greater than 10).

Greene

Improve Health Status and Reduce Health Disparities

Percentage of adults who have a regular health care provider



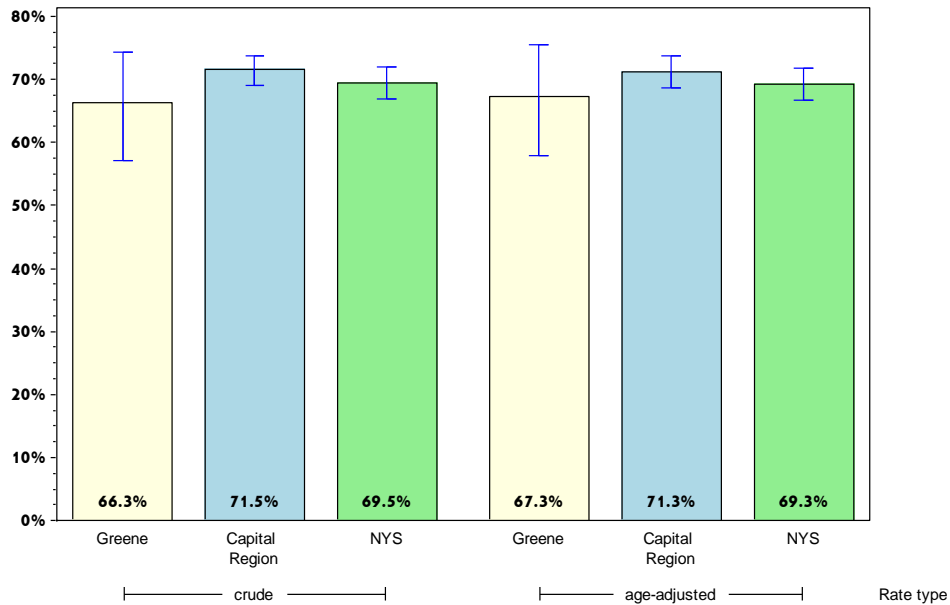
	Greene County			Capital Region		
	Est. # of Adults	Percent	95% CI	Est. # of Adults	Percent	95% CI
Total	32,983	83.0 [^]	(68.0-91.8)	655,372	86.7	(84.8-88.4)
Age						
18-24		#		69,621	73.2	(64.4-80.5)
25-34		#		89,783	71.5	(64.8-77.5)
35-44		#		102,018	88.6	(84.5-91.7)
45-64	13,943	96.6	(93.1-98.3)	241,515	92.1	(89.9-93.9)
65+	8,867	97.7	(93.8-99.2)	140,729	97.2	(96.0-98.1)
Race						
White, NH	27,490	89.5	(80.8-94.5)	563,297	87.5	(85.5-89.3)
Black, NH		#		27,716	74.9 [^]	(61.2-85.0)
Hispanic		#		20,329	79.8	(71.9-86.0)
Other, NH		#		44,030	88.6	(81.8-93.0)
Sex						
male	16,298	78.1 [^]	(53.4-91.7)	296,915	81.0	(77.7-84.0)
female	16,685	88.4 [^]	(73.3-95.5)	358,457	92.0	(90.1-93.6)
Age-adjusted^{&}		80.6	(70.8-87.7)		86.0	(84.1-87.8)

& Percent is age-adjusted to the 2000 United States Population.
 # Rates with <10 in the numerator or <50 in the denominator are suppressed.
 ^ Highly variable rate (confidence interval with a half-width greater than 10).

Greene

Improve Health Status and Reduce Health Disparities

Percentage of adults who had a dentist visit within the past year



	Greene County			Capital Region		
	Est. # of Adults	Percent	95% CI	Est. # of Adults	Percent	95% CI
Total	24,196	66.3	(57.1-74.4)	503,799	71.5	(69.1-73.8)
Age		#				
18-24		#		60,059	72.7 [^]	(61.6-81.5)
25-34		#		80,087	68.6	(61.6-75.0)
35-44		#		80,262	72.9	(66.8-78.3)
45-64	8,417	65.3 [^]	(54.5-74.7)	183,034	73.5	(69.8-76.8)
65+	5,370	61.9	(52.6-70.4)	90,249	67.0	(63.2-70.7)
Race						
White, NH	20,412	69.6	(62.0-76.2)	436,972	72.6	(70.0-75.0)
Black, NH		#		17,633	53.0 [^]	(40.6-64.9)
Hispanic		#		14,975	67.1 [^]	(56.8-76.0)
Other, NH		#		34,218	73.1 [^]	(60.5-82.7)
Sex						
male	12,014	65.5 [^]	(50.6-77.8)	231,254	67.5	(63.6-71.1)
female	12,182	67.1 [^]	(55.9-76.6)	272,544	75.4	(72.6-78.0)
Age-adjusted^{&}		67.3	(57.8-75.6)		71.3	(68.7-73.7)

& Percent is age-adjusted to the 2000 United States Population.

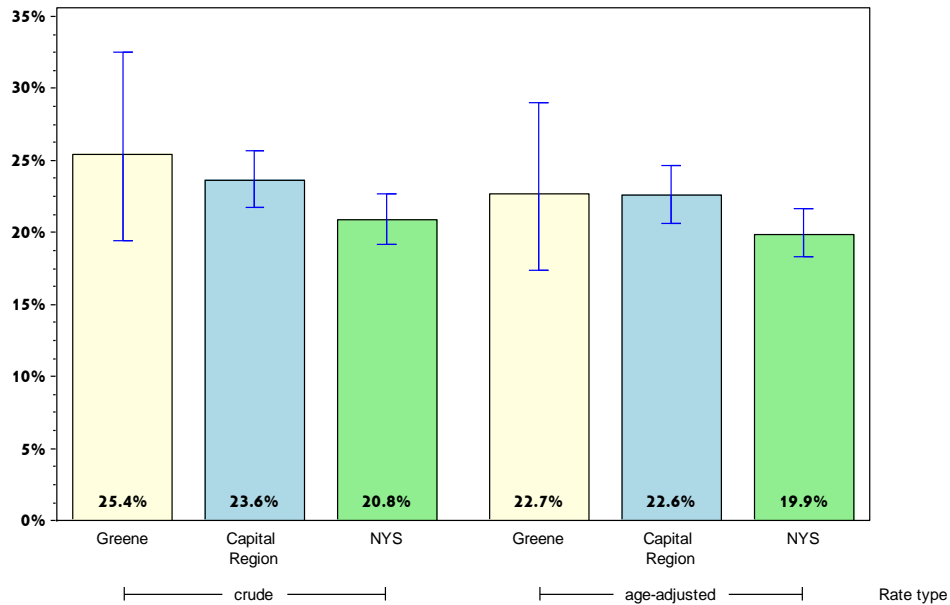
Rates with <10 in the numerator or <50 in the denominator are suppressed.

[^] Highly variable rate (confidence interval with a half-width greater than 10).

Greene

Improve Health Status and Reduce Health Disparities

Percentage of adults living with a disability*



	Greene County			Capital Region		
	Est. # of Adults	Percent	95% CI	Est. # of Adults	Percent	95% CI
Total	9,799	25.4	(19.4-32.5)	175,208	23.6	(21.7-25.7)
Age		#				
18-24		#		8,717	9.4	(5.9-14.5)
25-34		#		20,013	16.5	(11.4-23.4)
35-44		#		18,192	16.2	(12.0-21.5)
45-64	4,670	32.6 [^]	(23.2-43.6)	74,792	28.8	(25.5-32.3)
65+	3,189	35.6	(28.1-43.8)	51,545	36.3	(32.6-40.1)
Race						
White, NH	7,814	25.7	(20.6-31.5)	152,818	24.2	(22.1-26.4)
Black, NH		#		8,407	23.4	(16.1-32.7)
Hispanic		#		6,619	26.5 [^]	(18.4-36.7)
Other, NH		#		7,364	14.9 [^]	(8.4-25.1)
Sex						
male	5,485	27.6 [^]	(18.0-39.9)	83,089	23.2	(20.3-26.4)
female	4,314	23.1	(16.6-31.1)	92,118	24.1	(21.6-26.8)
Age-adjusted^{&}		22.7	(17.4-29.0)		22.6	(20.6-24.6)

* Limited activities (physical, mental, or emotional problems); need of special equipment (e.g. cane, wheel chair).

& Percent is age-adjusted to the 2000 United States Population.

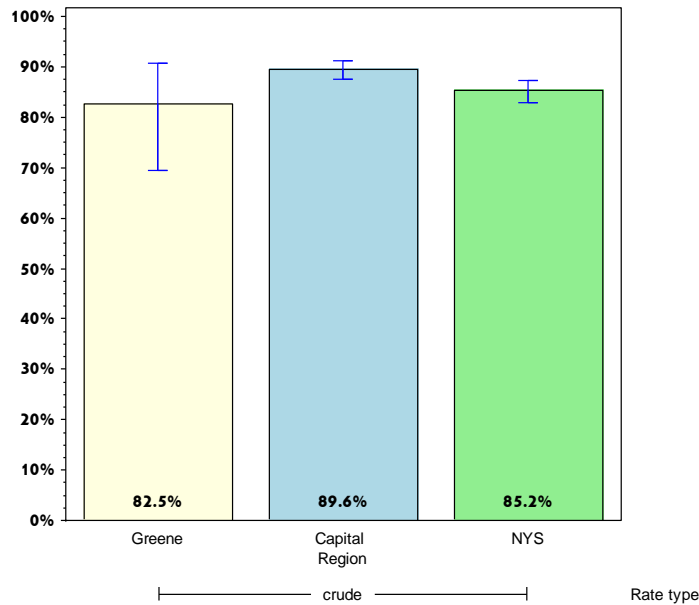
Rates with <10 in the numerator or <50 in the denominator are suppressed.

[^] Highly variable rate (confidence interval with a half-width greater than 10).

Greene

Improve Health Status and Reduce Health Disparities

Percentage of adults aged 18-64 years with healthcare coverage



Greene County

Capital Region

	Est. # of Adults	Percent	95% CI	Est. # of Adults	Percent	95% CI
Total	24,662	82.5 [^]	(69.5-90.7)	534,574	89.6	(87.6-91.2)
Age⁺						
18-24						
25-34						
35-44						
45-64						
65+						
Race						
White, NH	18,595	86.9 [^]	(75.1-93.6)	453,130	90.5	(88.4-92.3)
Black, NH		#		27,834	87.0	(77.3-93.0)
Hispanic		#		16,505	68.9 [^]	(57.4-78.4)
Other, NH		#		37,106	91.8 [^]	(79.9-96.9)
Sex						
male	13,592	80.2 [^]	(61.0-91.3)	262,286	87.7	(84.6-90.2)
female	11,070	85.6 [^]	(65.1-95.0)	272,288	91.5	(88.8-93.5)
Age-adjusted^{+,&}						

& Percent is age-adjusted to the 2000 United States Population.

+ Age-adjusted and age specific percent not generated for health indicators with age range limits.

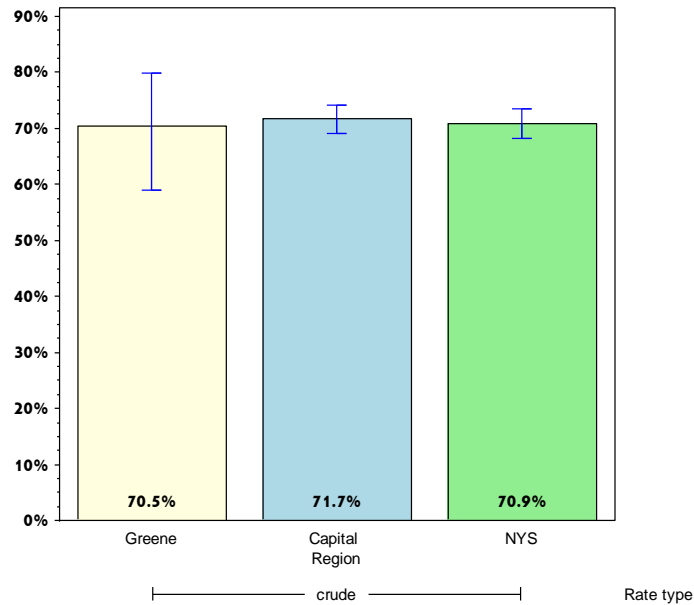
Rates with <10 in the numerator or <50 in the denominator are suppressed.

[^] Highly variable rate (confidence interval with a half-width greater than 10).

Greene

Improve Health Status and Reduce Health Disparities

Percentage of adults aged 18-64 years who saw a doctor for a routine checkup within the last year



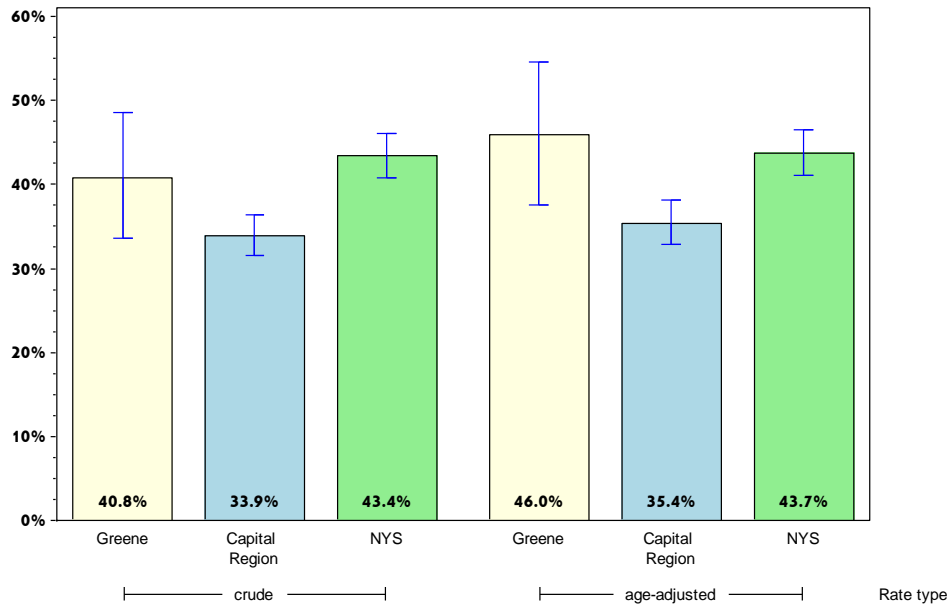
	Greene County			Capital Region		
	Est. # of Adults	Percent	95% CI	Est. # of Adults	Percent	95% CI
Total	21,027	70.5 [^]	(58.9-79.9)	426,846	71.7	(69.1-74.2)
Age⁺						
18-24						
25-34						
35-44						
45-64						
65+						
Race						
White, NH	14,902	69.8 [^]	(59.7-78.4)	350,182	70.2	(67.3-73.0)
Black, NH		#		25,151	78.0 [^]	(67.5-85.8)
Hispanic		#		17,511	72.3	(62.4-80.4)
Other, NH		#		34,002	85.1	(76.5-91.0)
Sex						
male	11,800	69.9 [^]	(52.9-82.8)	198,036	66.4	(62.4-70.2)
female	9,227	71.2 [^]	(55.4-83.1)	228,809	77.1	(73.6-80.3)
Age-adjusted^{+,&}						

& Percent is age-adjusted to the 2000 United States Population.
 + Age-adjusted and age specific percent not generated for health indicators with age range limits.
 # Rates with <10 in the numerator or <50 in the denominator are suppressed.
 ^ Highly variable rate (confidence interval with a half-width greater than 10).

Greene

Improve Health Status and Reduce Health Disparities

Percentage of adults experiencing housing insecurity in the past 12 months*



	Greene County			Capital Region		
	Est. # of Adults	Percent	95% CI	Est. # of Adults	Percent	95% CI
Total	12,975	40.8	(33.6-48.5)	227,646	33.9	(31.5-36.4)
Age						
18-24		#		25,551	37.1 [^]	(27.3-48.2)
25-34		#		46,389	43.5	(36.8-50.5)
35-44		#		44,836	41.9	(35.5-48.6)
45-64	4,957	38.4 [^]	(28.9-48.9)	84,567	34.2	(30.7-38.0)
65+	2,586	30.2	(22.4-39.4)	25,225	19.1	(16.3-22.3)
Race						
White, NH	10,038	37.2	(31.0-43.9)	186,009	32.2	(29.7-34.9)
Black, NH		#		16,688	57.1 [^]	(47.0-66.6)
Hispanic		#		10,980	49.7 [^]	(39.3-60.2)
Other, NH		#		13,970	32.2 [^]	(21.0-46.0)
Sex						
male	4,893	33.9 [^]	(24.3-45.0)	100,235	31.3	(27.8-35.0)
female	8,082	46.6 [^]	(36.5-56.9)	127,411	36.3	(33.1-39.6)
Age-adjusted^{&}		46.0	(37.6-54.6)		35.4	(32.8-38.1)

* Worried or stressed about having enough money to pay for rent or mortgage.

& Percent is age-adjusted to the 2000 United States Population.

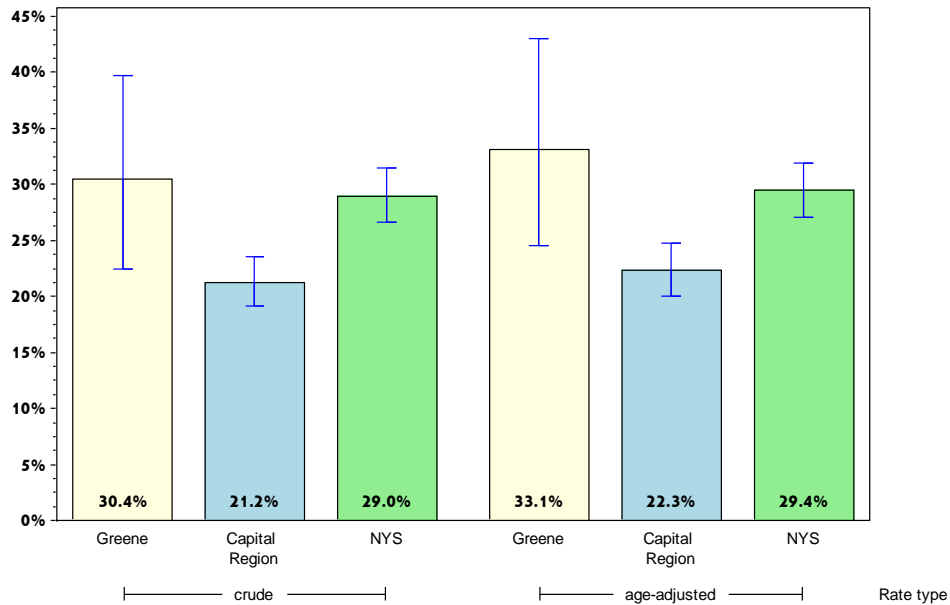
Rates with <10 in the numerator or <50 in the denominator are suppressed.

[^] Highly variable rate (confidence interval with a half-width greater than 10).

Greene

Improve Health Status and Reduce Health Disparities

Percentage of adults experiencing food insecurity in the past 12 months*



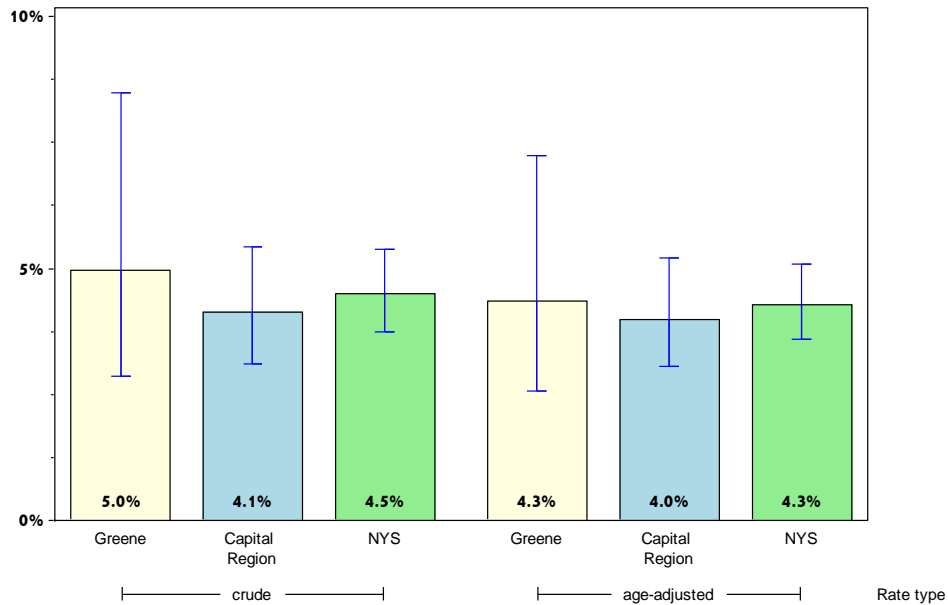
	Greene County			Capital Region		
	Est. # of Adults	Percent	95% CI	Est. # of Adults	Percent	95% CI
Total	11,353	30.4	(22.5-39.8)	153,218	21.2	(19.1-23.6)
Age		#				
18-24		#		23,761	27.0	(19.2-36.7)
25-34		#		30,679	25.7	(20.3-32.0)
35-44		#		31,379	28.4	(22.6-35.1)
45-64	3,768	28.4 [^]	(19.7-39.0)	54,262	21.4	(18.0-25.1)
65+	1,059	11.8	(7.8-17.6)	12,444	9.0	(6.9-11.6)
Race						
White, NH	8,347	27.7	(20.9-35.7)	117,239	19.0	(16.9-21.2)
Black, NH		#		13,625	39.9 [^]	(28.9-52.1)
Hispanic		#		8,032	34.9 [^]	(25.9-45.1)
Other, NH		#		14,323	30.8 [^]	(17.5-48.2)
Sex						
male	4,775	25.6 [^]	(14.7-40.8)	66,917	19.2	(15.9-23.0)
female	6,578	35.2 [^]	(25.5-46.3)	86,301	23.2	(20.5-26.1)
Age-adjusted^{&}		33.1	(24.5-43.0)		22.3	(20.0-24.8)

* Worried or stressed about having enough money to buy nutritious meals.
 & Percent is age-adjusted to the 2000 United States Population.
 # Rates with <10 in the numerator or <50 in the denominator are suppressed.
 ^ Highly variable rate (confidence interval with a half-width greater than 10).

Greene

Improve Health Status and Reduce Health Disparities

Percentage of adults with poor self-reported health



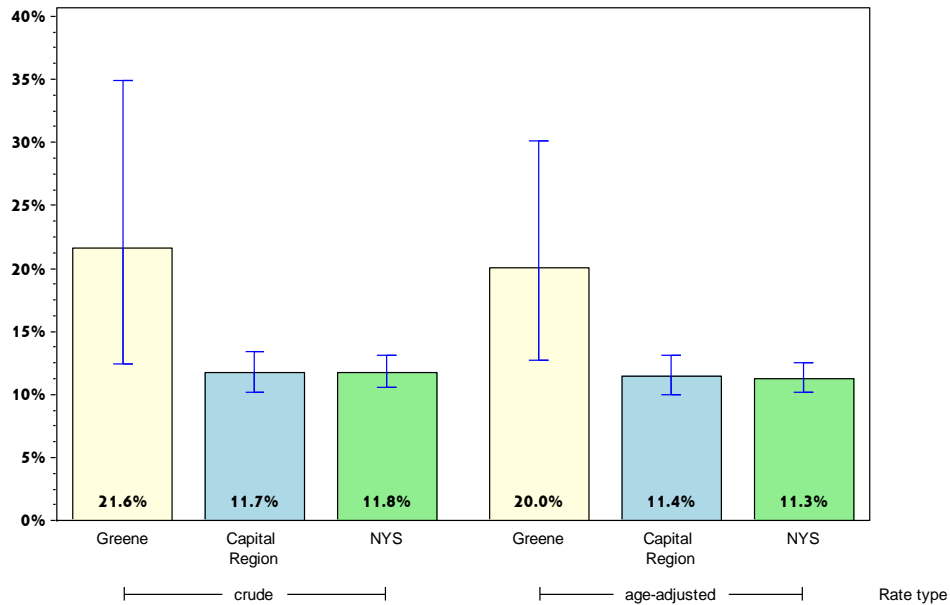
	Greene County			Capital Region		
	Est. # of Adults	Percent	95% CI	Est. # of Adults	Percent	95% CI
Total	1,958	5.0	(2.9-8.5)	31,086	4.1	(3.1-5.4)
Age		#			#	
18-24		#			#	
25-34		#			#	
35-44		#		4,002	3.5	(1.9-6.5)
45-64		#		15,190	5.8	(3.6-9.2)
65+	471	5.2	(2.8-9.5)	8,158	5.7	(4.1-7.8)
Race						
White, NH	1,540	5.1	(2.9-8.7)	21,951	3.4	(2.6-4.5)
Black, NH		#		3,013	8.1	(3.9-16.2)
Hispanic		#			#	
Other, NH		#		5,390	10.8 [^]	(3.7-27.7)
Sex						
male		#		12,669	3.5	(2.2-5.4)
female	1,137	6.0	(3.0-11.7)	18,417	4.7	(3.3-6.7)
Age-adjusted^{&}		4.3	(2.6-7.2)		4.0	(3.0-5.2)

& Percent is age-adjusted to the 2000 United States Population.
 # Rates with <10 in the numerator or <50 in the denominator are suppressed.
 ^ Highly variable rate (confidence interval with a half-width greater than 10).

Greene

Improve Health Status and Reduce Health Disparities

Percentage of adults who report 14 or more days of poor physical health*



	Greene County			Capital Region		
	Est. # of Adults	Percent	95% CI	Est. # of Adults	Percent	95% CI
Total	8,354	21.6 [^]	(12.5-34.9)	86,530	11.7	(10.2-13.4)
Age		#				
18-24		#		6,770	7.2	(3.3-14.8)
25-34		#		7,049	5.8	(3.7-8.9)
35-44		#		11,350	9.9	(6.8-14.3)
45-64	2,941	21.1 [^]	(13.5-31.4)	36,240	14.2	(11.4-17.4)
65+	1,000	11.7	(7.3-18.1)	24,874	17.8	(14.8-21.3)
Race						
White, NH	3,740	12.6	(8.9-17.5)	67,869	10.8	(9.5-12.2)
Black, NH		#		9,363	25.8 [^]	(14.7-41.2)
Hispanic		#		2,326	9.8	(4.9-18.7)
Other, NH		#		6,972	14.1 [^]	(6.0-29.7)
Sex						
male	6,084	29.8 [^]	(14.8-51.0)	36,753	10.2	(8.0-12.9)
female	2,271	12.5	(7.6-19.7)	49,778	13.1	(11.2-15.3)
Age-adjusted^{&}		20.0 [^]	(12.7-30.1)		11.4	(9.9-13.1)

* Out of the past 30 days.

& Percent is age-adjusted to the 2000 United States Population.

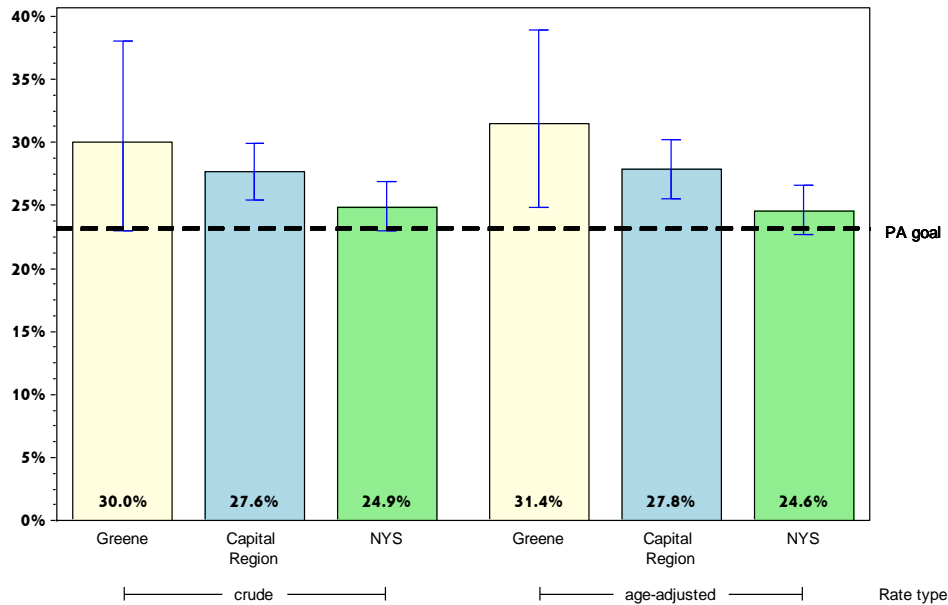
Rates with <10 in the numerator or <50 in the denominator are suppressed.

[^] Highly variable rate (confidence interval with a half-width greater than 10).

Greene

Prevent Chronic Diseases

Percentage of adults who are obese*



	Greene County			Capital Region		
	Est. # of Adults	Percent	95% CI	Est. # of Adults	Percent	95% CI
Total	11,177	30.0	(23.0-38.0)	196,015	27.6	(25.5-29.9)
Age						
18-24		#		12,899	14.4	(8.4-23.4)
25-34		#		27,900	24.7	(19.0-31.4)
35-44		#		36,257	33.5	(27.6-40.0)
45-64	4,846	35.0 [^]	(25.1-46.4)	84,116	33.3	(29.8-37.0)
65+	2,757	31.8	(24.1-40.6)	33,329	24.5	(21.4-27.9)
Race						
White, NH	8,634	29.5	(23.8-35.8)	167,713	27.7	(25.4-30.1)
Black, NH		#		12,819	38.0 [^]	(27.3-50.1)
Hispanic		#		6,873	28.0	(20.4-37.1)
Other, NH		#		8,610	18.6 [^]	(10.1-31.8)
Sex						
male	5,712	27.6 [^]	(17.7-40.4)	98,578	27.4	(24.2-30.7)
female	5,465	32.9	(25.1-41.9)	97,437	27.9	(24.9-31.1)
Age-adjusted^{&}		31.4	(24.9-38.9)		27.8	(25.6-30.3)

* Obesity defined as a Body Mass Index (BMI) ≥ 30 . BMI is calculated based on weight and height.

& Percent is age-adjusted to the 2000 United States Population.

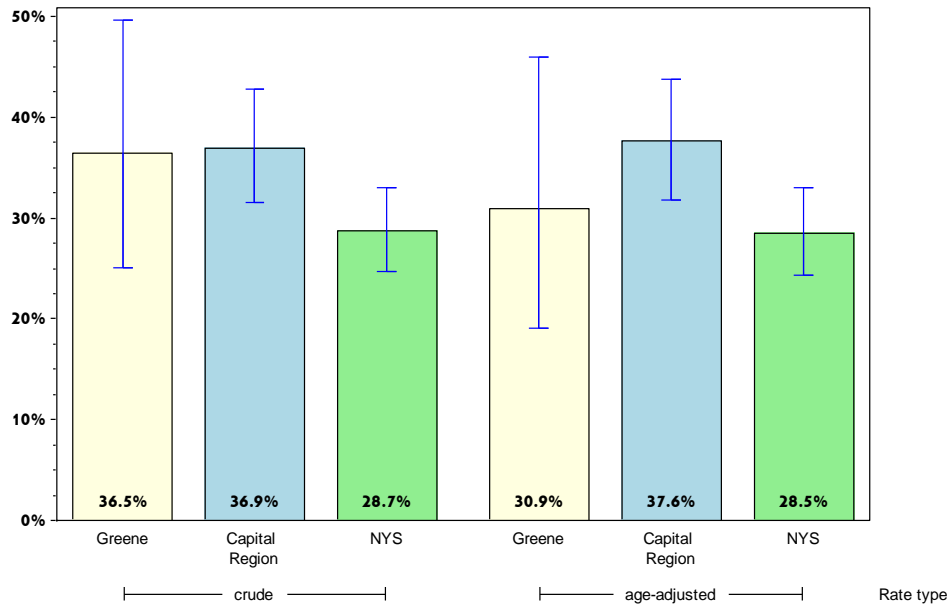
Rates with <10 in the numerator or <50 in the denominator are suppressed.

[^] Highly variable rate (confidence interval with a half-width greater than 10).

Greene

Prevent Chronic Diseases

Percentage of adults with an annual household income less than \$25,000 who are obese*



	Greene County			Capital Region		
	Est. # of Adults	Percent	95% CI	Est. # of Adults	Percent	95% CI
Total	3,066	36.5 [^]	(25.1-49.6)	54,587	36.9	(31.5-42.8)
Age						
18-24		#		3,020	17.4 [^]	(8.4-32.5)
25-34		#		10,222	39.3 [^]	(24.9-55.8)
35-44		#		7,713	41.2 [^]	(25.5-58.9)
45-64		#		23,403	48.3 [^]	(38.0-58.8)
65+	1,172	34.7 [^]	(21.6-50.6)	10,229	27.6	(21.5-34.7)
Race						
White, NH	2,436	32.4 [^]	(21.5-45.7)	41,621	36.5	(30.4-43.0)
Black, NH		#		4,238	36.2 [^]	(22.1-53.2)
Hispanic		#		2,717	28.5 [^]	(16.7-44.3)
Other, NH		#			#	
Sex						
male		#		20,376	30.7	(22.4-40.6)
female	2,113	39.5 [^]	(24.8-56.4)	34,212	42.0	(35.0-49.3)
Age-adjusted^{&}		30.9 [^]	(19.0-46.0)		37.6	(31.8-43.7)

* Obesity defined as a Body Mass Index (BMI) >=30. BMI is calculated based on weight and height.

& Percent is age-adjusted to the 2000 United States Population.

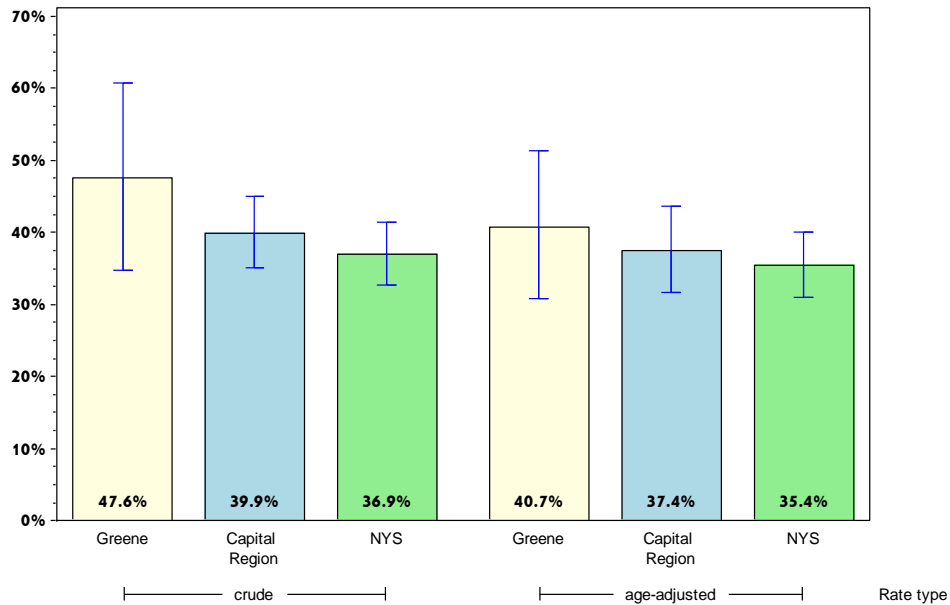
Rates with <10 in the numerator or <50 in the denominator are suppressed.

[^] Highly variable rate (confidence interval with a half-width greater than 10).

Greene

Prevent Chronic Diseases

Percentage of adults living with a disability who are obese*



	Greene County			Capital Region		
	Est. # of Adults	Percent	95% CI	Est. # of Adults	Percent	95% CI
Total	4,477	47.6 [^]	(34.7-60.7)	65,790	39.9	(35.1-45.0)
Age		#			#	
18-24		#			#	
25-34		#		7,184	38.8 [^]	(19.6-62.4)
35-44		#		7,077	41.0 [^]	(26.7-56.9)
45-64		#		33,361	46.8	(39.6-54.2)
65+	1,403	47.7 [^]	(34.9-60.8)	17,293	35.7	(29.7-42.3)
Race						
White, NH	3,710	49.9 [^]	(38.1-61.7)	55,500	38.7	(33.6-44.2)
Black, NH		#			#	
Hispanic		#			#	
Other, NH		#			#	
Sex						
male	2,240	41.4 [^]	(25.2-59.8)	30,702	37.8	(30.6-45.6)
female	2,237	55.8 [^]	(38.5-71.9)	35,087	42.0	(35.7-48.5)
Age-adjusted^{&}		40.7 [^]	(30.8-51.4)		37.4	(31.6-43.7)

* Obesity defined as a Body Mass Index (BMI) ≥ 30 . BMI is calculated based on weight and height. Limited activities (physical, mental, or emotional problems); need of special equipment (e.g. cane, wheel chair).

& Percent is age-adjusted to the 2000 United States Population.

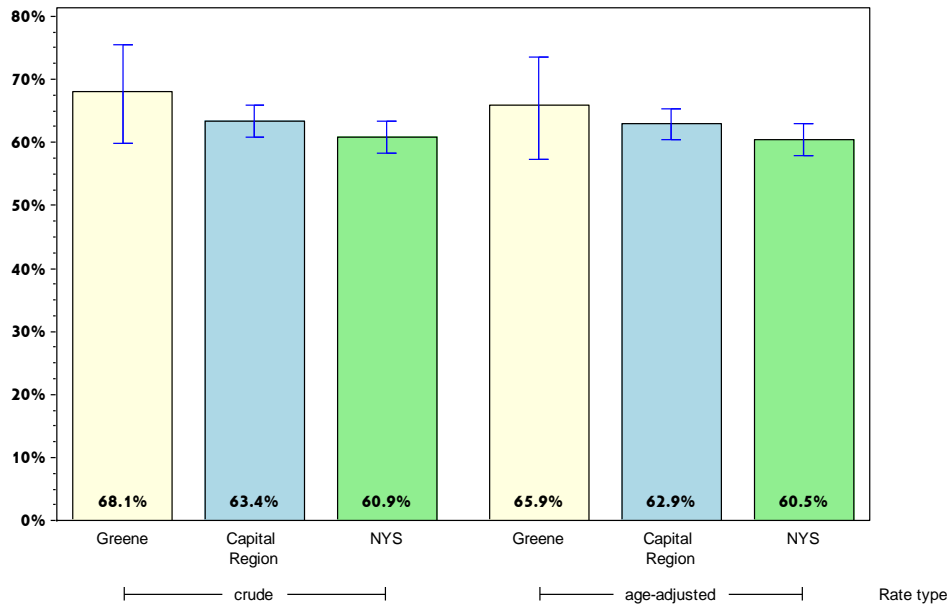
Rates with <10 in the numerator or <50 in the denominator are suppressed.

[^] Highly variable rate (confidence interval with a half-width greater than 10).

Greene

Prevent Chronic Diseases

Percentage of adults overweight or obese*



	Greene County			Capital Region		
	Est. # of Adults	Percent	95% CI	Est. # of Adults	Percent	95% CI
Total	25,405	68.1	(59.9-75.4)	449,862	63.4	(60.9-65.8)
Age		#				
18-24		#		36,543	40.7 [^]	(31.2-51.1)
25-34		#		65,156	57.7	(51.1-64.0)
35-44		#		71,436	66.1	(59.8-71.8)
45-64	10,944	79.1	(70.4-85.7)	182,293	72.2	(68.8-75.3)
65+	5,769	66.6	(57.8-74.3)	88,147	64.8	(60.7-68.6)
Race						
White, NH	18,370	62.7	(55.2-69.7)	381,643	63.1	(60.5-65.6)
Black, NH		#		25,401	75.3	(65.7-83.0)
Hispanic		#		17,407	70.9 [^]	(60.2-79.7)
Other, NH		#		25,411	55.0 [^]	(40.4-68.8)
Sex						
male	15,482	74.8 [^]	(61.9-84.4)	249,199	69.2	(65.4-72.7)
female	9,923	59.8	(50.9-68.1)	200,663	57.5	(54.1-60.8)
Age-adjusted^{&}		65.9	(57.2-73.6)		62.9	(60.4-65.3)

* Defined as a Body Mass Index (BMI) ≥ 25 . BMI is calculated based on weight and height.

& Percent is age-adjusted to the 2000 United States Population.

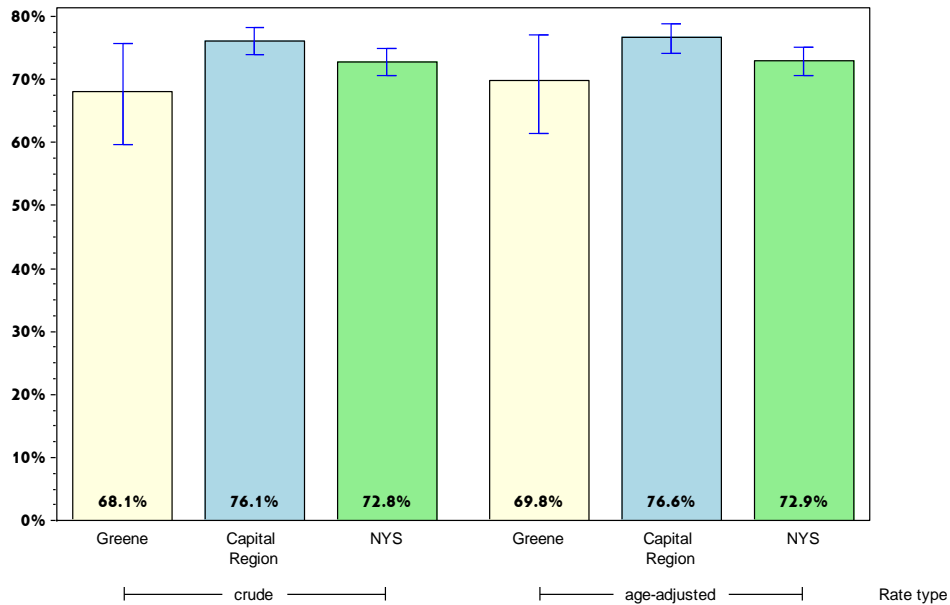
Rates with < 10 in the numerator or < 50 in the denominator are suppressed.

[^] Highly variable rate (confidence interval with a half-width greater than 10).

Greene

Prevent Chronic Diseases

Percentage of adults who participated in leisure time physical activity in the past 30 days*



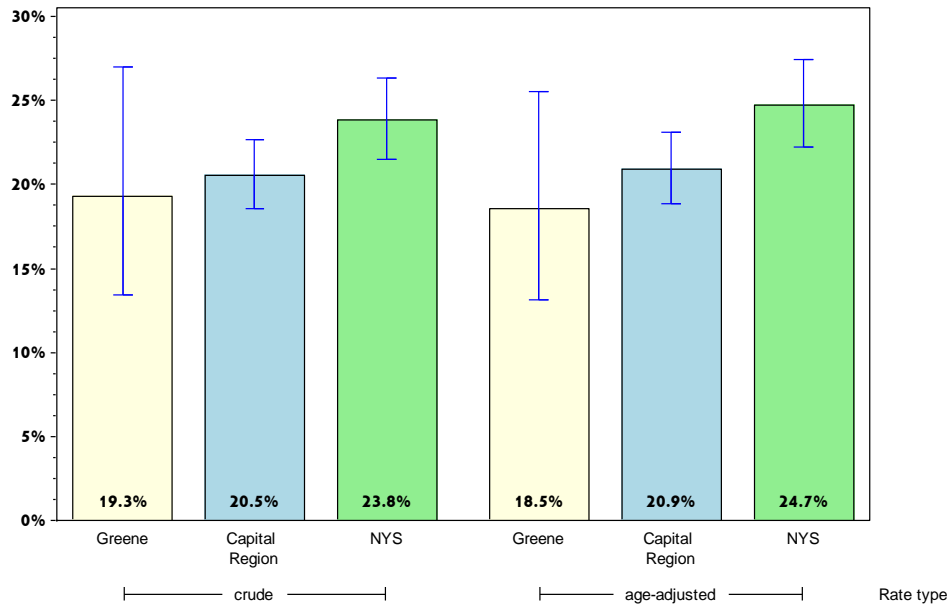
	Greene County			Capital Region		
	Est. # of Adults	Percent	95% CI	Est. # of Adults	Percent	95% CI
Total	26,181	68.1	(59.6-75.6)	556,553	76.1	(73.9-78.2)
Age						
18-24	#	#		75,199	82.7 [^]	(71.5-90.1)
25-34	#	#		94,246	78.5	(71.7-84.0)
35-44	#	#		88,206	79.6	(73.8-84.3)
45-64	8,990	63.1 [^]	(50.2-74.4)	196,559	76.2	(72.8-79.3)
65+	5,850	65.4	(56.8-73.1)	93,338	66.8	(62.9-70.4)
Race						
White, NH	19,688	65.0	(57.6-71.8)	479,185	76.6	(74.2-78.8)
Black, NH	#	#		24,322	71.4 [^]	(59.7-80.9)
Hispanic	#	#		17,336	72.5 [^]	(60.3-82.1)
Other, NH	#	#		35,711	75.0 [^]	(63.2-84.0)
Sex						
male	13,231	67.1 [^]	(52.2-79.2)	272,326	76.8	(73.1-80.1)
female	12,949	69.3	(60.5-76.8)	284,227	75.6	(72.8-78.1)
Age-adjusted^{&}		69.8	(61.5-77.0)		76.6	(74.2-78.8)

* Any physical activities or exercises such as running or walking
 & Percent is age-adjusted to the 2000 United States Population.
 # Rates with <10 in the numerator or <50 in the denominator are suppressed.
 ^ Highly variable rate (confidence interval with a half-width greater than 10).

Greene

Prevent Chronic Diseases

Percentage of adults who consume one or more sugary drinks daily*



	Greene County			Capital Region		
	Est. # of Adults	Percent	95% CI	Est. # of Adults	Percent	95% CI
Total	7,101	19.3	(13.4-27.0)	146,058	20.5	(18.5-22.7)
Age						
18-24	#			28,523	32.9	(24.4-42.8)
25-34	#			36,519	31.0	(24.6-38.1)
35-44	#			18,018	16.3	(12.6-20.9)
45-64	2,908	22.6 [^]	(14.3-33.7)	42,321	16.9	(14.4-19.8)
65+	1,177	13.3	(8.6-19.9)	18,870	13.9	(11.5-16.7)
Race						
White, NH	6,316	21.3	(15.0-29.3)	121,145	19.9	(17.8-22.3)
Black, NH	#			10,242	30.3 [^]	(20.6-42.2)
Hispanic	#			8,727	38.5 [^]	(29.0-49.0)
Other, NH	#			5,944	12.5	(7.4-20.3)
Sex						
male	4,325	23.4 [^]	(13.5-37.3)	84,851	24.6	(21.5-28.0)
female	2,776	15.2	(9.8-22.8)	61,207	16.7	(14.2-19.5)
Age-adjusted^{&}		18.5	(13.1-25.5)		20.9	(18.8-23.1)

* Sugary drinks include regular soda, and sugar-sweetened drinks.

& Percent is age-adjusted to the 2000 United States Population.

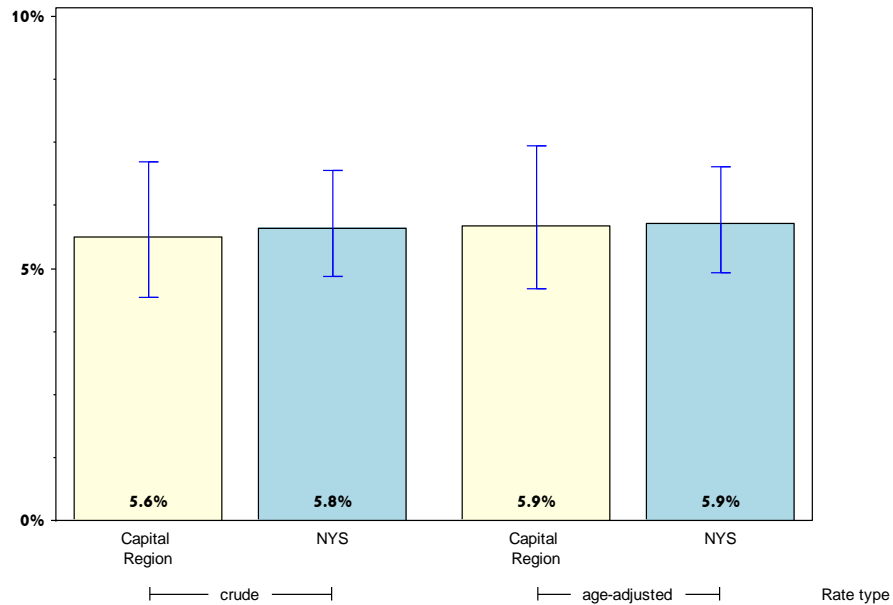
Rates with <10 in the numerator or <50 in the denominator are suppressed.

[^] Highly variable rate (confidence interval with a half-width greater than 10).

Greene

Prevent Chronic Diseases

Percentage of adults who consume fast-food three or more times per week



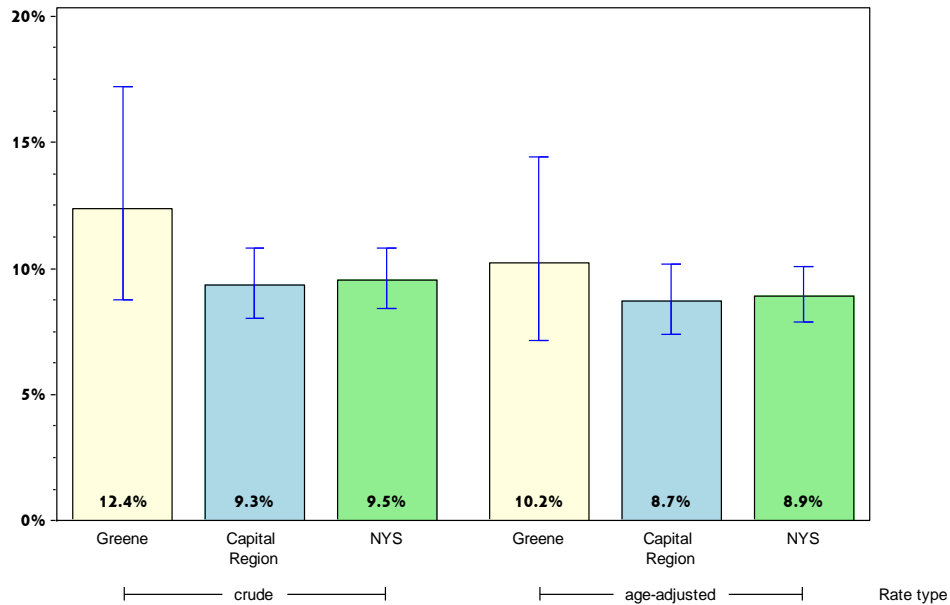
	Greene County			Capital Region		
	Est. # of Adults	Percent	95% CI	Est. # of Adults	Percent	95% CI
Total		#		39,790	5.6	(4.4-7.1)
Age		#				
18-24		#		8,329	9.7	(5.1-17.5)
25-34		#		11,200	9.6	(5.7-15.5)
35-44		#		5,776	5.3	(3.2-8.5)
45-64		#		10,867	4.4	(2.9-6.5)
65+		#		3,146	2.3	(1.5-3.6)
Race		#				
White, NH		#		31,483	5.2	(4.1-6.6)
Black, NH		#		5,232	15.8 [^]	(6.0-35.5)
Hispanic		#		2,006	9.0	(5.0-15.8)
Other, NH		#			#	
Sex		#				
male		#		31,282	9.1	(6.9-12.0)
female		#		8,509	2.3	(1.7-3.3)
Age-adjusted^{&}		#			5.9	(4.6-7.4)

& Percent is age-adjusted to the 2000 United States Population.
 # Rates with <10 in the numerator or <50 in the denominator are suppressed.
 ^ Highly variable rate (confidence interval with a half-width greater than 10).

Greene

Prevent Chronic Diseases

Percentage of adults with physician diagnosed diabetes*



	Greene County			Capital Region		
	Est. # of Adults	Percent	95% CI	Est. # of Adults	Percent	95% CI
Total	4,918	12.4	(8.8-17.2)	70,730	9.3	(8.0-10.8)
Age		#			#	
18-24		#			#	
25-34		#			#	
35-44		#		8,295	7.2	(3.8-13.1)
45-64	1,793	12.4	(6.8-21.6)	27,350	10.4	(8.0-13.3)
65+	2,248	24.8	(17.7-33.4)	32,001	22.1	(18.9-25.7)
Race						
White, NH	4,288	14.0	(10.1-19.0)	56,938	8.8	(7.6-10.2)
Black, NH		#		5,143	13.9	(8.7-21.3)
Hispanic		#		2,015	7.9	(4.6-13.0)
Other, NH		#		6,634	13.3 [^]	(5.6-28.3)
Sex						
male	1,839	8.8	(5.0-15.0)	40,032	10.9	(8.7-13.5)
female	3,079	16.3	(10.8-23.9)	30,698	7.9	(6.5-9.4)
Age-adjusted^{&}		10.2	(7.1-14.4)		8.7	(7.4-10.2)

* As diagnosed by a health professional.

& Percent is age-adjusted to the 2000 United States Population.

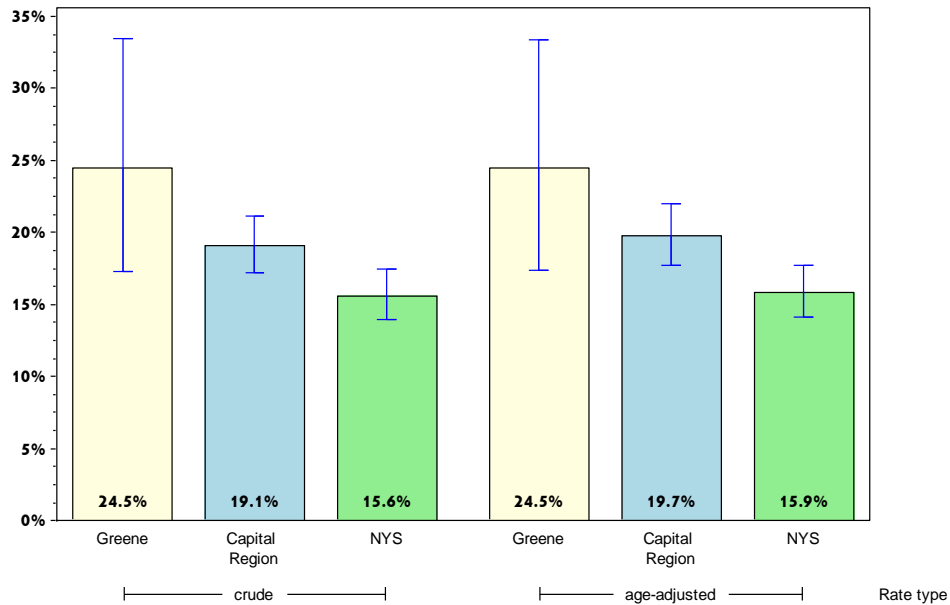
Rates with <10 in the numerator or <50 in the denominator are suppressed.

[^] Highly variable rate (confidence interval with a half-width greater than 10).

Greene

Prevent Chronic Diseases

Percentage of adults who are current smokers



	Greene County			Capital Region		
	Est. # of Adults	Percent	95% CI	Est. # of Adults	Percent	95% CI
Total	9,434	24.5	(17.3-33.4)	141,063	19.1	(17.2-21.2)
Age		#				
18-24		#		18,990	20.7	(14.6-28.6)
25-34		#		31,739	26.0	(20.4-32.5)
35-44		#		24,107	21.5	(16.4-27.8)
45-64	4,098	28.6 [^]	(17.9-42.3)	55,144	21.2	(18.3-24.4)
65+	769	8.6	(5.0-14.3)	10,388	7.4	(5.4-10.0)
Race						
White, NH	6,967	22.9	(16.6-30.8)	117,876	18.7	(16.7-20.9)
Black, NH		#		7,493	21.5	(14.8-30.2)
Hispanic		#		8,467	34.6 [^]	(24.9-45.8)
Other, NH		#		7,227	14.7 [^]	(8.0-25.4)
Sex						
male	5,551	27.9 [^]	(16.3-43.6)	75,766	21.1	(18.2-24.4)
female	3,883	20.8	(14.2-29.3)	65,298	17.2	(14.8-19.8)
Age-adjusted^{&}		24.5	(17.4-33.3)		19.7	(17.7-22.0)

& Percent is age-adjusted to the 2000 United States Population.

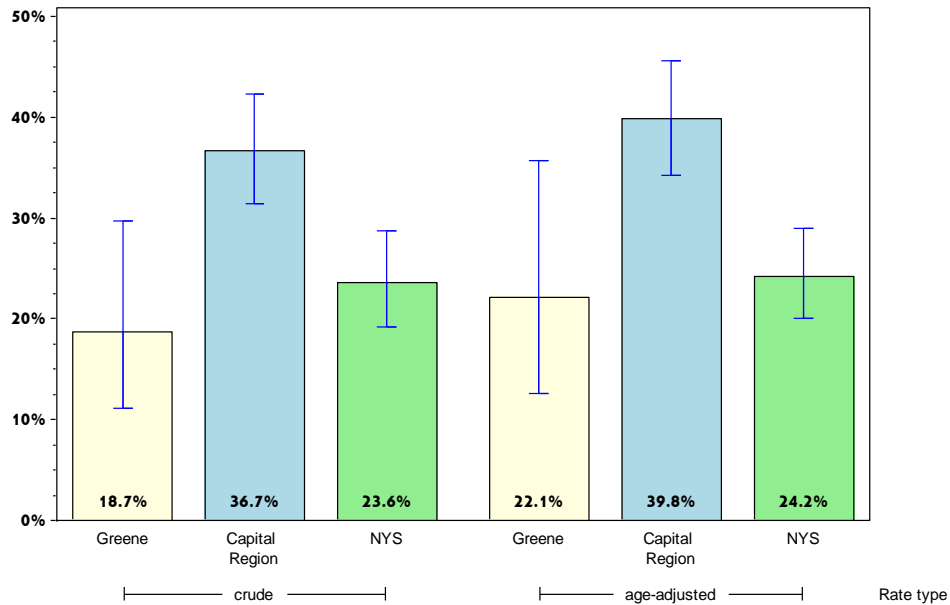
Rates with <10 in the numerator or <50 in the denominator are suppressed.

[^] Highly variable rate (confidence interval with a half-width greater than 10).

Greene

Prevent Chronic Diseases

Percentage of adults with annual household income less than \$25,000 who are current smokers



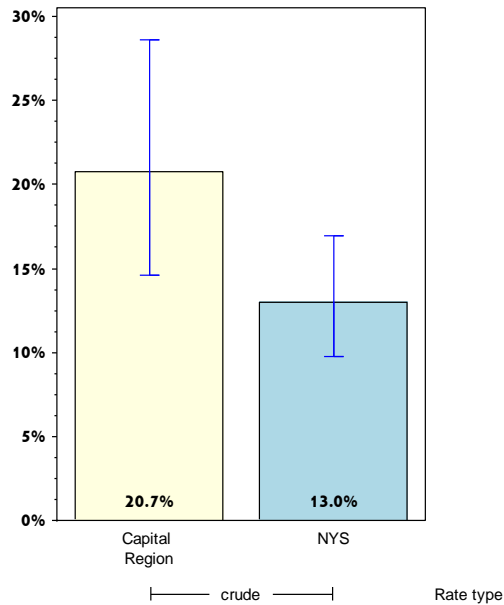
	Greene County			Capital Region		
	Est. # of Adults	Percent	95% CI	Est. # of Adults	Percent	95% CI
Total	1,811	18.7 [^]	(11.2-29.7)	56,135	36.7	(31.4-42.3)
Age		#				
18-24		#		5,940	34.3 [^]	(21.7-49.4)
25-34		#		14,236	52.5 [^]	(38.9-65.8)
35-44		#		10,218	51.2 [^]	(35.3-66.7)
45-64		#		20,764	41.1 [^]	(31.8-51.1)
65+		#		4,979	13.3	(8.1-21.0)
Race						
White, NH	1,386	17.9	(10.9-27.9)	43,833	37.2	(31.3-43.6)
Black, NH		#		3,373	25.7 [^]	(14.8-40.8)
Hispanic		#		4,581	47.6 [^]	(31.2-64.5)
Other, NH		#			#	
Sex						
male		#		30,330	46.8	(38.0-55.7)
female	991	15.1 [^]	(6.9-30.2)	25,806	29.3	(23.5-35.9)
Age-adjusted^{&}		22.1 [^]	(12.6-35.7)		39.8	(34.2-45.6)

& Percent is age-adjusted to the 2000 United States Population.
 # Rates with <10 in the numerator or <50 in the denominator are suppressed.
 ^ Highly variable rate (confidence interval with a half-width greater than 10).

Greene

Prevent Chronic Diseases

Percentage of adults aged 18-24 years who are current smokers



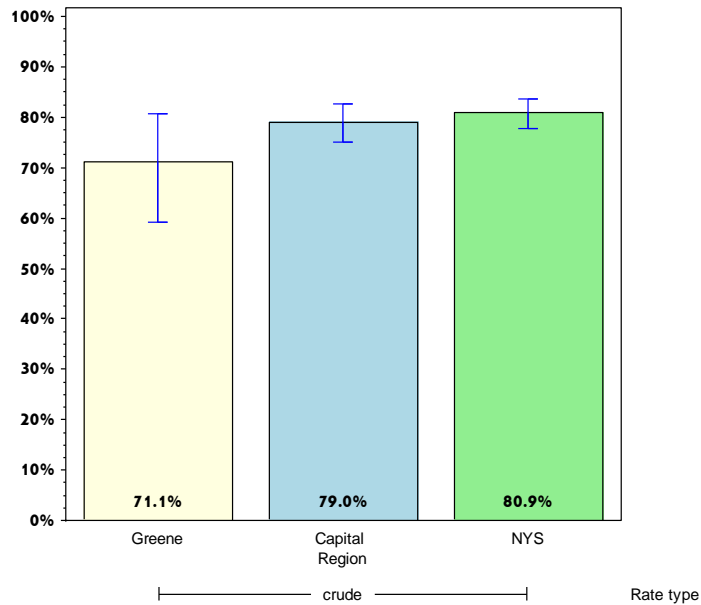
	Greene County			Capital Region		
	Est. # of Adults	Percent	95% CI	Est. # of Adults	Percent	95% CI
Total		#		18,990	20.7	(14.6-28.6)
Age⁺						
18-24						
25-34						
35-44						
45-64						
65+						
Race						
White, NH		#		16,226	22.0	(14.9-31.2)
Black, NH		#			#	
Hispanic		#			#	
Other, NH		#			#	
Sex						
male		#		9,187	17.5	(10.9-27.0)
female		#		9,803	25.0 [^]	(14.9-38.8)
Age-adjusted^{+,&}						

& Percent is age-adjusted to the 2000 United States Population.
 + Age-adjusted and age specific percent not generated for health indicators with age range limits.
 # Rates with <10 in the numerator or <50 in the denominator are suppressed.
 ^ Highly variable rate (confidence interval with a half-width greater than 10).

Greene

Prevent Chronic Diseases

Percentage of women aged 50-74 years receiving breast cancer screening based on recent guidelines*



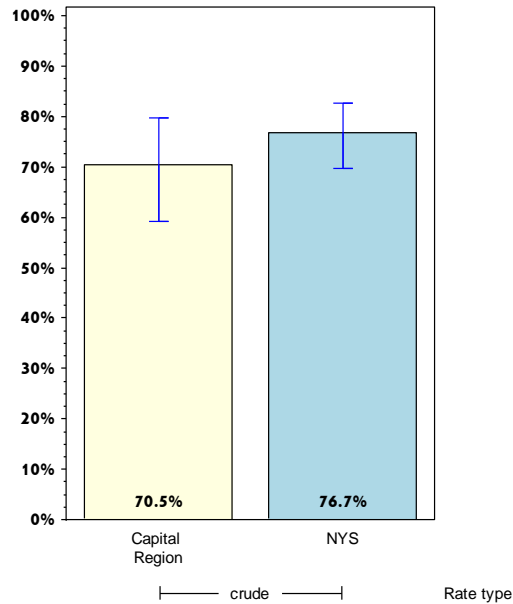
	Greene County			Capital Region		
	Est. # of Adults	Percent	95% CI	Est. # of Adults	Percent	95% CI
Total	5,881	71.1 [^]	(59.2-80.6)	110,971	79.0	(75.0-82.5)
Age⁺						
18-24						
25-34						
35-44						
45-64						
65+						
Race						
White, NH	5,615	72.5 [^]	(60.9-81.7)	100,353	78.7	(74.5-82.4)
Black, NH		#			#	
Hispanic		#			#	
Other, NH		#			#	
Sex						
male		#			#	
female	5,881	71.1 [^]	(59.2-80.6)	110,971	79.0	(75.0-82.5)
Age-adjusted^{+,&}						

* Mammogram within past 2 years.
 & Percent is age-adjusted to the 2000 United States Population.
 + Age-adjusted and age specific percent not generated for health indicators with age range limits.
 # Rates with <10 in the numerator or <50 in the denominator are suppressed.
 ^ Highly variable rate (confidence interval with a half-width greater than 10).

Greene

Prevent Chronic Diseases

Percentage of women aged 50-74 years with annual household income of less than \$25,000 receiving breast cancer screening based on recent guidelines*



	Greene County			Capital Region		
	Est. # of Adults	Percent	95% CI	Est. # of Adults	Percent	95% CI
Total		#		21,656	70.5 [^]	(59.2-79.7)
Age⁺						
18-24						
25-34						
35-44						
45-64						
65+						
Race						
White, NH		#		16,285	66.3 [^]	(53.7-76.9)
Black, NH		#			#	
Hispanic		#			#	
Other, NH		#			#	
Sex						
male		#			#	
female		#		21,656	70.5 [^]	(59.2-79.7)
Age-adjusted^{+,&}						

* Mammogram within past 2 years.

& Percent is age-adjusted to the 2000 United States Population.

+ Age-adjusted and age specific percent not generated for health indicators with age range limits.

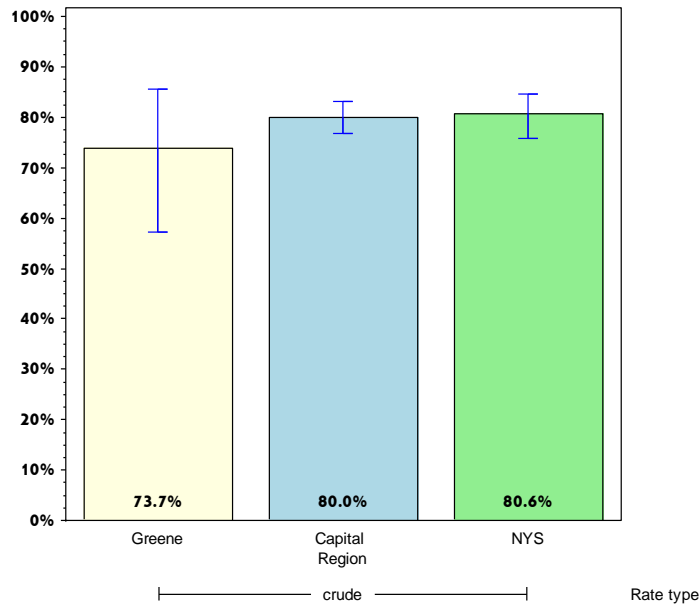
Rates with <10 in the numerator or <50 in the denominator are suppressed.

[^] Highly variable rate (confidence interval with a half-width greater than 10).

Greene

Prevent Chronic Diseases

Percentage of women aged 21-65 years receiving cervical cancer screening based on recent guidelines*



Greene County

Capital Region

	Est. # of Adults	Percent	95% CI	Est. # of Adults	Percent	95% CI
Total	9,403	73.7 [^]	(57.1-85.5)	218,954	80.0	(76.6-83.0)
Age⁺						
18-24						
25-34						
35-44						
45-64						
65+						
Race						
White, NH	9,077	81.5 [^]	(71.3-88.7)	189,224	81.8	(78.5-84.8)
Black, NH		#		10,116	74.0 [^]	(54.2-87.3)
Hispanic		#		6,537	74.3 [^]	(52.7-88.2)
Other, NH		#		13,077	65.6 [^]	(44.1-82.1)
Sex						
male		#			#	
female	9,403	73.7 [^]	(57.1-85.5)	218,954	80.0	(76.6-83.0)
Age-adjusted^{+,&}						

* Pap test within past 3 years.

& Percent is age-adjusted to the 2000 United States Population.

+ Age-adjusted and age specific percent not generated for health indicators with age range limits.

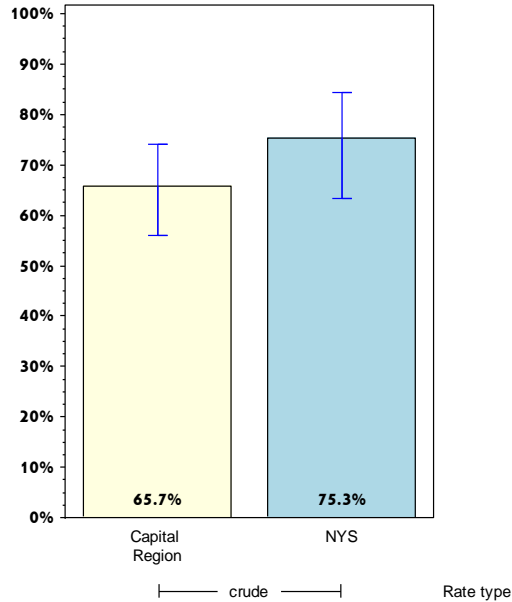
Rates with <10 in the numerator or <50 in the denominator are suppressed.

[^] Highly variable rate (confidence interval with a half-width greater than 10).

Greene

Prevent Chronic Diseases

Percentage of women aged 21-65 years with annual household income of less than \$25,000 receiving cervical cancer screening based on recent guidelines*



	Greene County			Capital Region		
	Est. # of Adults	Percent	95% CI	Est. # of Adults	Percent	95% CI
Total		#		38,085	65.7	(56.0-74.2)
Age⁺						
18-24						
25-34						
35-44						
45-64						
65+						
Race						
White, NH		#		29,878	69.6	(59.7-77.9)
Black, NH		#			#	
Hispanic		#			#	
Other, NH		#			#	
Sex						
male		#			#	
female		#		38,085	65.7	(56.0-74.2)
Age-adjusted^{+,&}						

* Pap test within past 3 years.

& Percent is age-adjusted to the 2000 United States Population.

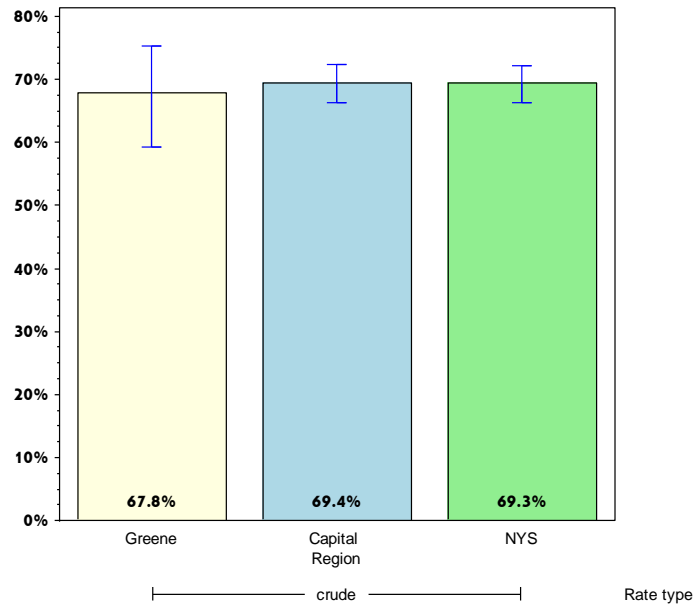
+ Age-adjusted and age specific percent not generated for health indicators with age range limits.

Rates with <10 in the numerator or <50 in the denominator are suppressed.

Greene

Prevent Chronic Diseases

Percentage of adults aged 50-75 years receiving colorectal cancer screening based on recent guidelines*



	Greene County			Capital Region		
	Est. # of Adults	Percent	95% CI	Est. # of Adults	Percent	95% CI
Total	10,742	67.8	(59.3-75.2)	187,405	69.4	(66.3-72.4)
Age⁺						
18-24						
25-34						
35-44						
45-64						
65+						
Race						
White, NH	10,111	70.1	(62.2-77.1)	167,485	70.0	(66.9-73.0)
Black, NH		#		5,819	57.4 [^]	(37.3-75.2)
Hispanic		#			#	
Other, NH		#		10,135	69.0 [^]	(45.3-85.6)
Sex						
male	5,140	69.4 [^]	(56.3-80.0)	86,398	67.2	(62.2-71.9)
female	5,602	66.3 [^]	(55.0-76.1)	101,007	71.5	(67.5-75.1)
Age-adjusted^{+,&}						

* Blood stool test within 1 year, or sigmoidoscopy within 5 years with blood stool test within 3 years, or colonoscopy within 10 years.

& Percent is age-adjusted to the 2000 United States Population.

+ Age-adjusted and age specific percent not generated for health indicators with age range limits.

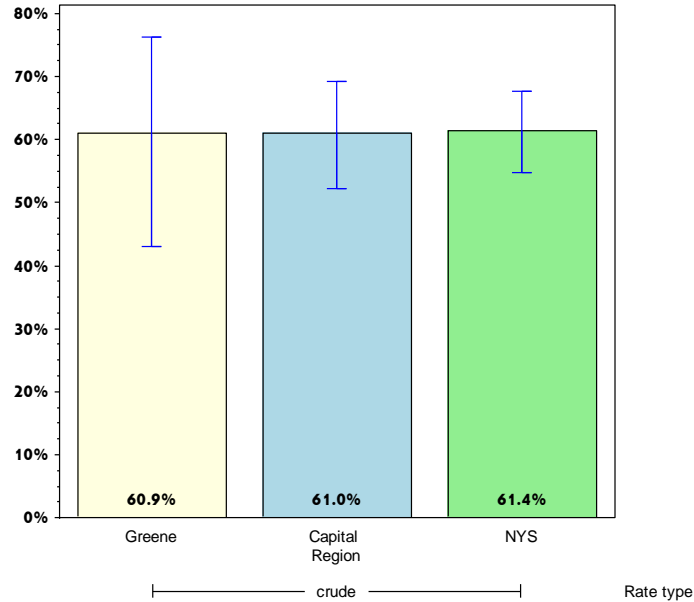
Rates with <10 in the numerator or <50 in the denominator are suppressed.

[^] Highly variable rate (confidence interval with a half-width greater than 10).

Greene

Prevent Chronic Diseases

Percentage of adults aged 50-75 years with annual household income less than \$25,000 receiving colorectal cancer screening based on recent guidelines*



	Greene County			Capital Region		
	Est. # of Adults	Percent	95% CI	Est. # of Adults	Percent	95% CI
Total Age⁺	2,584	60.9 [^]	(43.1-76.3)	33,685	61.0	(52.1-69.2)
18-24						
25-34						
35-44						
45-64						
65+						
Race						
White, NH	2,219	64.3 [^]	(45.5-79.5)	26,261	62.3	(53.5-70.3)
Black, NH		#			#	
Hispanic		#			#	
Other, NH		#			#	
Sex						
male		#		11,885	49.3 [^]	(35.9-62.9)
female		#		21,800	70.0	(60.2-78.3)
Age-adjusted^{+,&}						

* Blood stool test within 1 year, or sigmoidoscopy within 5 years with blood stool test within 3 years, or colonoscopy within 10 years.

& Percent is age-adjusted to the 2000 United States Population.

+ Age-adjusted and age specific percent not generated for health indicators with age range limits.

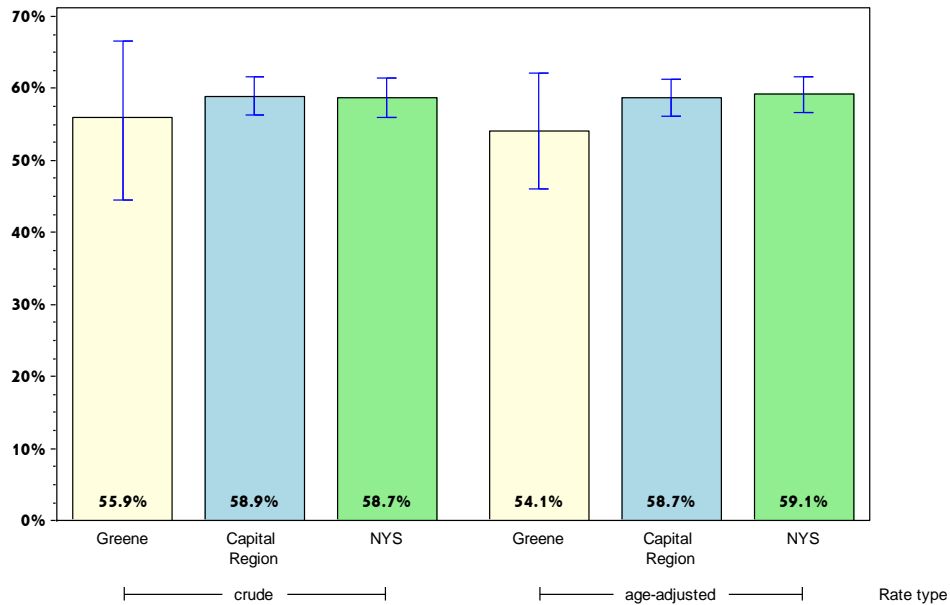
Rates with <10 in the numerator or <50 in the denominator are suppressed.

[^] Highly variable rate (confidence interval with a half-width greater than 10).

Greene

Prevent Chronic Diseases

Percentage of adults who had a test for high blood sugar or diabetes within the past three years



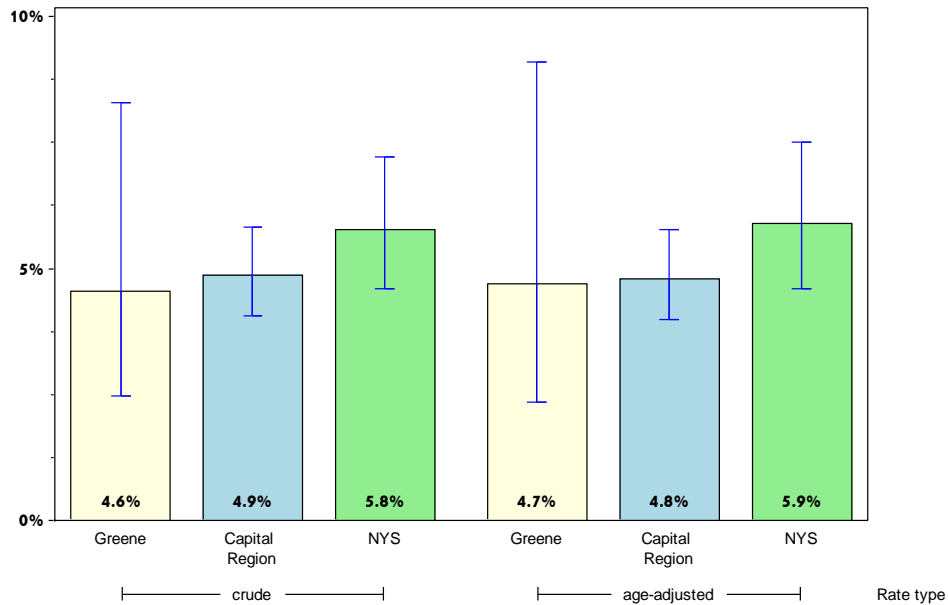
	Greene County			Capital Region		
	Est. # of Adults	Percent	95% CI	Est. # of Adults	Percent	95% CI
Total	18,644	55.9 [^]	(44.6-66.6)	387,390	58.9	(56.3-61.5)
Age		#				
18-24		#		27,483	30.4 [^]	(21.5-41.0)
25-34		#		62,651	51.6	(45.0-58.1)
35-44		#		60,615	58.6	(51.9-65.0)
45-64	8,708	74.5 [^]	(63.5-83.1)	154,280	69.2	(65.5-72.7)
65+	4,791	74.1	(64.2-82.1)	74,984	69.3	(65.0-73.3)
Race						
White, NH	15,552	61.2	(53.0-68.7)	336,654	60.0	(57.3-62.7)
Black, NH		#		18,952	60.5 [^]	(46.6-73.0)
Hispanic		#		11,998	53.0 [^]	(41.9-63.8)
Other, NH		#		19,787	46.7 [^]	(32.5-61.4)
Sex						
male	9,679	53.2 [^]	(35.6-70.0)	181,844	57.7	(53.8-61.6)
female	8,965	59.1 [^]	(47.4-69.8)	205,546	60.0	(56.5-63.5)
Age-adjusted^{&}		54.1	(46.0-62.1)		58.7	(56.1-61.3)

& Percent is age-adjusted to the 2000 United States Population.
 # Rates with <10 in the numerator or <50 in the denominator are suppressed.
 ^ Highly variable rate (confidence interval with a half-width greater than 10).

Greene

Prevent Chronic Diseases

Percentage of adults with physician-diagnosed prediabetes



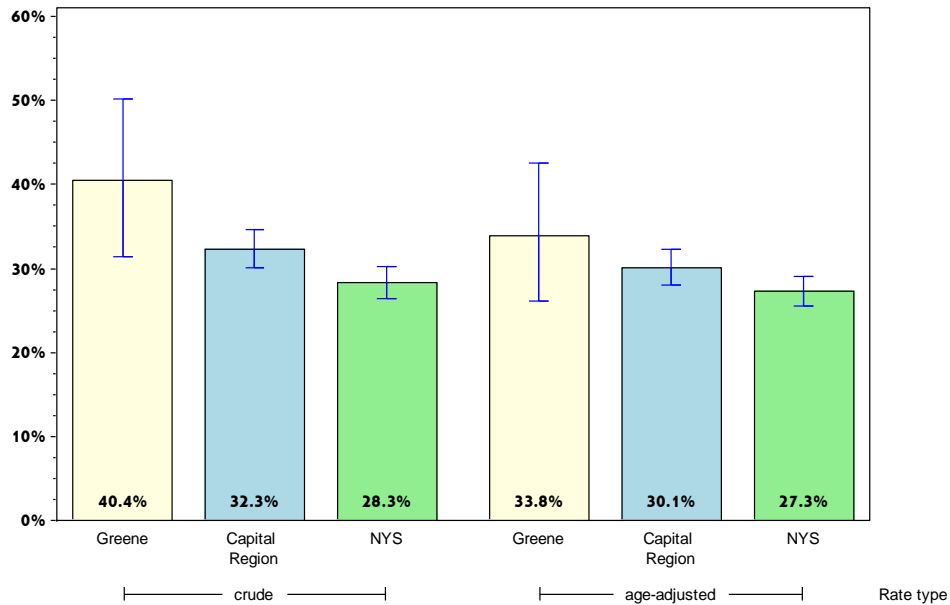
	Greene County			Capital Region		
	Est. # of Adults	Percent	95% CI	Est. # of Adults	Percent	95% CI
Total	1,574	4.6	(2.5-8.3)	33,014	4.9	(4.0-5.8)
Age		#			#	
18-24		#			#	
25-34		#		3,641	2.9	(1.7-5.1)
35-44		#		3,857	3.6	(2.0-6.4)
45-64		#		13,796	5.9	(4.5-7.8)
65+	433	6.4	(3.3-12.1)	10,296	9.3	(6.9-12.4)
Race						
White, NH	1,241	4.7	(2.7-8.1)	26,899	4.6	(3.8-5.6)
Black, NH		#		2,420	7.6	(3.6-15.2)
Hispanic		#			#	
Other, NH		#			#	
Sex						
male	955	5.1	(2.1-12.0)	16,246	5.0	(3.9-6.5)
female	618	3.9	(1.8-8.3)	16,768	4.7	(3.7-6.0)
Age-adjusted^{&}		4.7	(2.4-9.1)		4.8	(4.0-5.8)

& Percent is age-adjusted to the 2000 United States Population.
 # Rates with <10 in the numerator or <50 in the denominator are suppressed.

Greene

Prevent Chronic Diseases

Percentage of adults with physician-diagnosed high blood pressure



	Greene County			Capital Region		
	Est. # of Adults	Percent	95% CI	Est. # of Adults	Percent	95% CI
Total	16,019	40.4	(31.4-50.2)	243,986	32.3	(30.1-34.6)
Age		#				
18-24		#		4,516	4.8	(1.7-12.9)
25-34		#		17,383	13.8	(9.4-19.9)
35-44		#		26,620	23.1	(18.0-29.1)
45-64	6,257	43.3 [^]	(32.8-54.5)	100,694	38.3	(34.7-42.1)
65+	5,852	64.7	(55.7-72.7)	88,328	61.4	(57.5-65.1)
Race						
White, NH	11,507	37.6	(31.7-43.9)	209,708	32.6	(30.4-35.0)
Black, NH		#		16,696	44.7 [^]	(33.4-56.6)
Hispanic		#		5,472	21.3	(14.7-30.0)
Other, NH		#		12,111	24.3 [^]	(13.7-39.3)
Sex						
male	9,256	44.5 [^]	(29.8-60.3)	133,745	36.5	(33.0-40.1)
female	6,764	35.9	(28.0-44.6)	110,242	28.4	(25.7-31.2)
Age-adjusted^{&}		33.8	(26.2-42.5)		30.1	(28.0-32.3)

& Percent is age-adjusted to the 2000 United States Population.

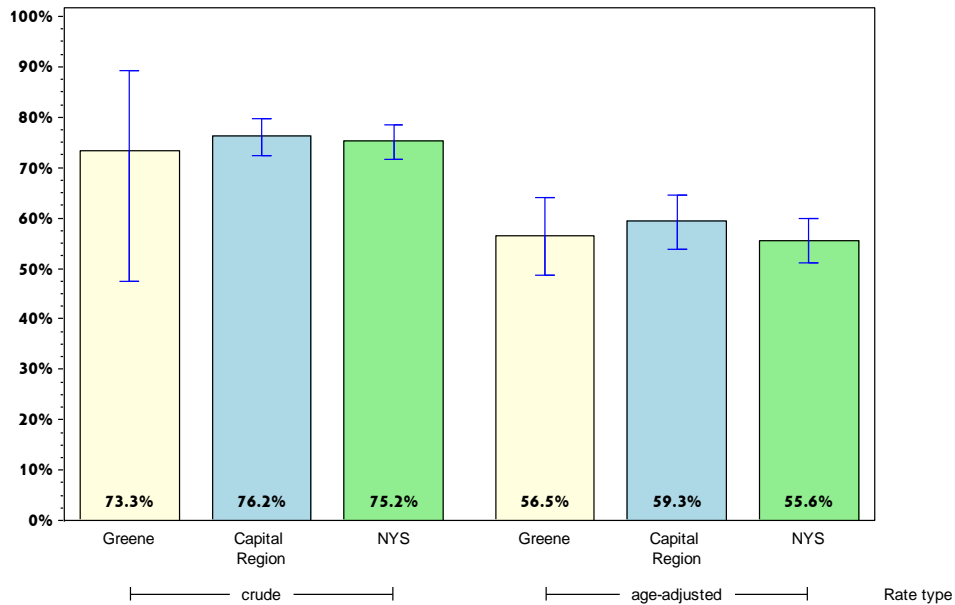
Rates with <10 in the numerator or <50 in the denominator are suppressed.

[^] Highly variable rate (confidence interval with a half-width greater than 10).

Greene

Prevent Chronic Diseases

Percentage of adults with diagnosed high blood pressure taking high blood pressure medication



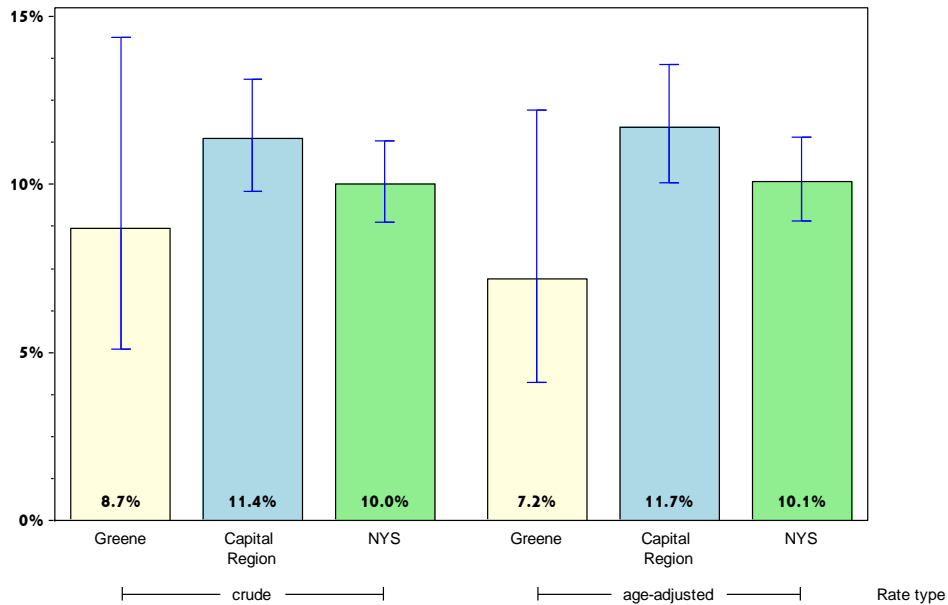
	Greene County			Capital Region		
	Est. # of Adults	Percent	95% CI	Est. # of Adults	Percent	95% CI
Total	11,739	73.3 [^]	(47.4-89.3)	184,933	76.2	(72.5-79.6)
Age		#			#	
18-24		#			#	
25-34		#		6,283	36.1 [^]	(17.2-60.7)
35-44		#		16,792	63.1 [^]	(49.8-74.6)
45-64	4,989	79.7 [^]	(66.5-88.7)	76,505	76.4	(70.5-81.4)
65+	5,562	95.1	(89.6-97.7)	79,451	90.6	(87.3-93.1)
Race						
White, NH	9,633	83.7	(75.6-89.5)	158,180	75.9	(72.1-79.4)
Black, NH		#		12,368	74.1 [^]	(47.5-90.0)
Hispanic		#			#	
Other, NH		#			#	
Sex						
male	5,867	63.4 [^]	(29.9-87.6)	99,560	75.2	(69.6-80.1)
female	5,872	86.8 [^]	(74.7-93.6)	85,373	77.5	(72.4-81.9)
Age-adjusted^{&}		56.5	(48.6-63.9)		59.3	(53.7-64.6)

& Percent is age-adjusted to the 2000 United States Population.
 # Rates with <10 in the numerator or <50 in the denominator are suppressed.
 ^ Highly variable rate (confidence interval with a half-width greater than 10).

Greene

Prevent Chronic Diseases

Percentage of adults with current asthma*



	Greene County			Capital Region		
	Est. # of Adults	Percent	95% CI	Est. # of Adults	Percent	95% CI
Total	3,446	8.7	(5.1-14.4)	85,825	11.4	(9.8-13.1)
Age		#				
18-24		#		8,015	8.5	(5.1-13.6)
25-34		#		21,480	17.1	(11.8-24.3)
35-44		#		14,809	12.8	(9.2-17.6)
45-64	1,282	8.9	(4.2-17.8)	29,947	11.4	(9.1-14.2)
65+	788	8.7	(4.9-15.1)	10,717	7.4	(5.9-9.4)
Race						
White, NH	2,125	6.9	(4.3-10.9)	72,459	11.3	(9.6-13.2)
Black, NH		#		5,334	14.5 [^]	(7.6-25.7)
Hispanic		#		3,520	13.8	(8.0-22.9)
Other, NH		#		4,512	9.0 [^]	(4.0-19.1)
Sex						
male	1,854	8.9 [^]	(3.8-19.5)	34,052	9.3	(7.2-11.9)
female	1,592	8.4	(4.7-14.8)	51,772	13.3	(11.2-15.8)
Age-adjusted^{&}		7.2	(4.1-12.2)		11.7	(10.1-13.6)

* Physician diagnosed asthma.

& Percent is age-adjusted to the 2000 United States Population.

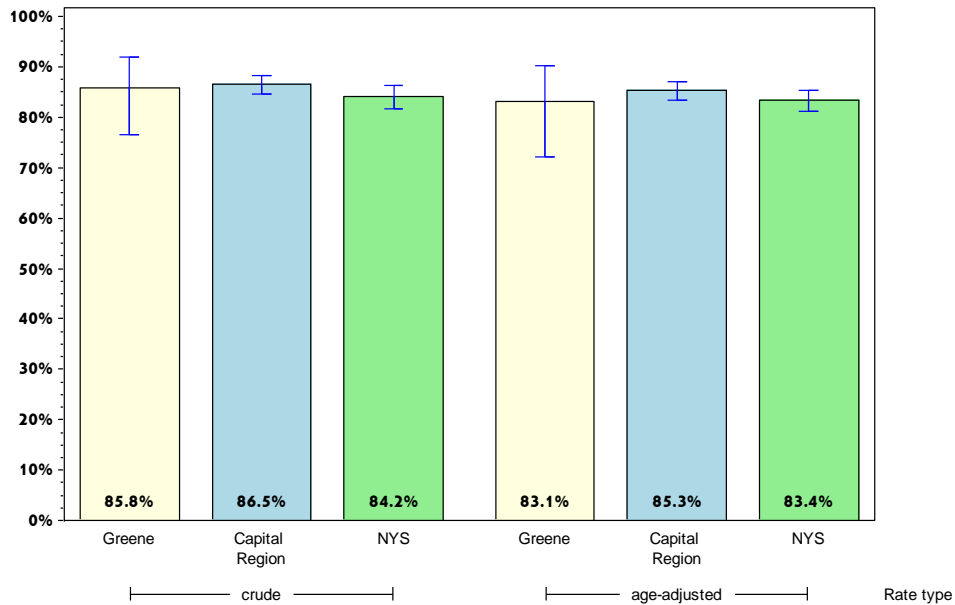
Rates with <10 in the numerator or <50 in the denominator are suppressed.

[^] Highly variable rate (confidence interval with a half-width greater than 10).

Greene

Prevent Chronic Diseases

Percent of adults with cholesterol checked*



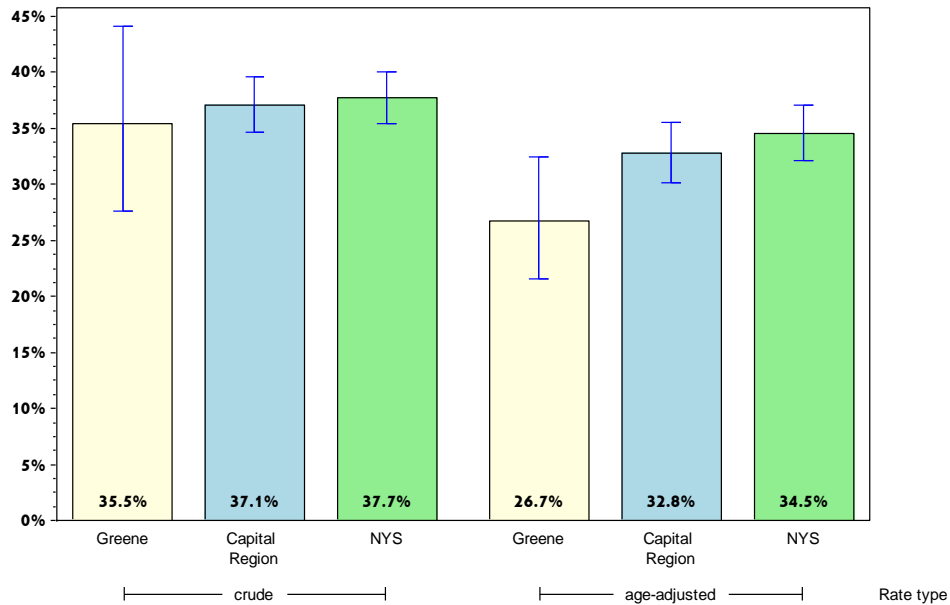
	Greene County			Capital Region		
	Est. # of Adults	Percent	95% CI	Est. # of Adults	Percent	95% CI
Total	33,025	85.8	(76.6-91.8)	639,140	86.5	(84.7-88.2)
Age						
18-24	#	#		44,907	50.1 [^]	(39.8-60.5)
25-34	#	#		89,079	74.8	(69.7-79.3)
35-44	#	#		100,962	90.2	(86.2-93.1)
45-64	13,581	94.5	(85.2-98.1)	252,435	96.6	(94.9-97.8)
65+	8,684	96.6	(92.6-98.5)	139,365	96.8	(95.2-97.9)
Race						
White, NH	26,171	86.8	(78.3-92.3)	550,269	87.4	(85.4-89.1)
Black, NH	#	#		30,769	84.0	(74.9-90.3)
Hispanic	#	#		18,164	74.0	(64.3-81.8)
Other, NH	#	#		39,939	83.5 [^]	(73.4-90.3)
Sex						
male	17,171	85.7 [^]	(71.8-93.4)	304,962	85.4	(82.7-87.7)
female	15,854	85.9 [^]	(71.6-93.7)	334,177	87.6	(84.9-89.8)
Age-adjusted^{&}		83.1 [^]	(72.1-90.3)		85.3	(83.3-87.0)

* As diagnosed by a health professional.
 & Percent is age-adjusted to the 2000 United States Population.
 # Rates with <10 in the numerator or <50 in the denominator are suppressed.
 ^ Highly variable rate (confidence interval with a half-width greater than 10).

Greene

Prevent Chronic Diseases

Percentage of adults 18 years and older with elevated cholesterol*



	Greene County			Capital Region		
	Est. # of Adults	Percent	95% CI	Est. # of Adults	Percent	95% CI
Total	11,563	35.5	(27.6-44.1)	235,112	37.1	(34.6-39.6)
Age						
18-24	#	#		5,953	13.3 [^]	(4.8-31.8)
25-34	#	#		16,241	18.2	(12.4-26.0)
35-44	#	#		24,632	24.4	(19.4-30.3)
45-64	5,716	42.3 [^]	(31.0-54.6)	109,820	43.9	(40.1-47.7)
65+	4,857	57.2	(47.8-66.0)	74,721	54.5	(50.5-58.4)
Race						
White, NH	9,637	37.4	(31.7-43.5)	203,433	37.3	(34.8-39.8)
Black, NH	#	#		10,346	33.6 [^]	(23.0-46.2)
Hispanic	#	#		7,318	40.6 [^]	(29.2-53.1)
Other, NH	#	#		14,016	35.1 [^]	(21.2-52.1)
Sex						
male	6,813	40.3 [^]	(26.3-56.0)	113,334	37.5	(33.8-41.5)
female	4,750	30.3	(23.5-38.1)	121,779	36.6	(33.5-39.9)
Age-adjusted^{&}		26.7	(21.6-32.5)		32.8	(30.1-35.6)

* As diagnosed by a health professional.

& Percent is age-adjusted to the 2000 United States Population.

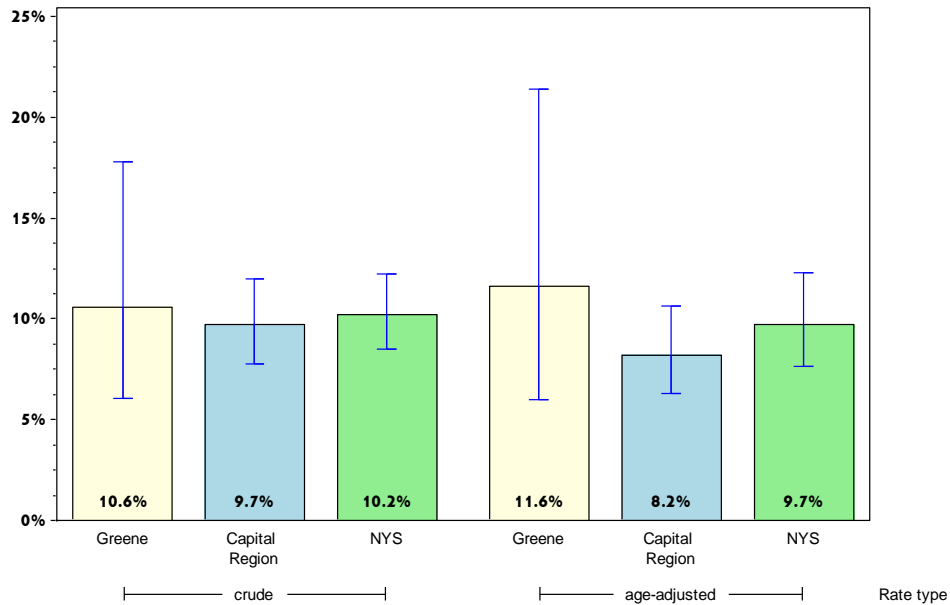
Rates with <10 in the numerator or <50 in the denominator are suppressed.

[^] Highly variable rate (confidence interval with a half-width greater than 10).

Greene

Prevent Chronic Diseases

Percentage of adults who have taken a course or class to learn how to manage their chronic disease or condition*



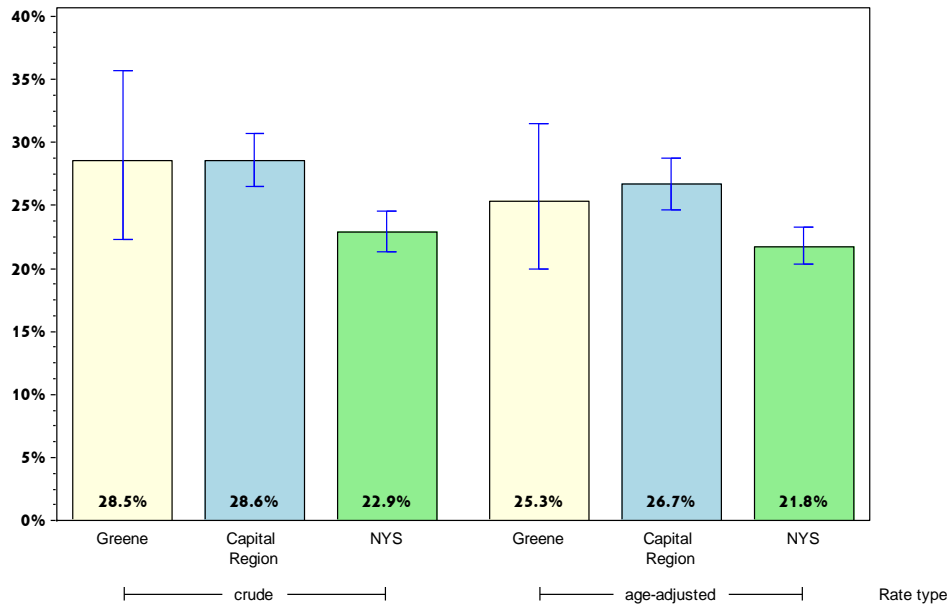
	Greene County			Capital Region		
	Est. # of Adults	Percent	95% CI	Est. # of Adults	Percent	95% CI
Total	2,508	10.6	(6.1-17.8)	38,954	9.7	(7.8-12.0)
Age		#			#	
18-24		#			#	
25-34		#			#	
35-44		#		2,378	4.4	(2.3-8.5)
45-64		#		16,610	10.3	(7.5-14.0)
65+	1,194	16.8 [^]	(9.5-28.0)	12,432	11.0	(8.6-13.9)
Race						
White, NH	1,618	9.1	(5.3-15.2)	32,271	9.3	(7.5-11.6)
Black, NH		#		2,454	11.4	(6.3-20.0)
Hispanic		#			#	
Other, NH		#			#	
Sex						
male	1,206	9.2 [^]	(3.8-20.6)	17,247	9.1	(7.0-11.7)
female	1,302	12.3 [^]	(6.2-22.7)	21,707	10.2	(7.3-14.1)
Age-adjusted^{&}		11.6	(6.0-21.4)		8.2	(6.3-10.6)

* Courses for high blood pressure, arthritis, or diabetes.
 & Percent is age-adjusted to the 2000 United States Population.
 # Rates with <10 in the numerator or <50 in the denominator are suppressed.
 ^ Highly variable rate (confidence interval with a half-width greater than 10).

Greene

Prevent Chronic Diseases

Percentage of adults with arthritis*



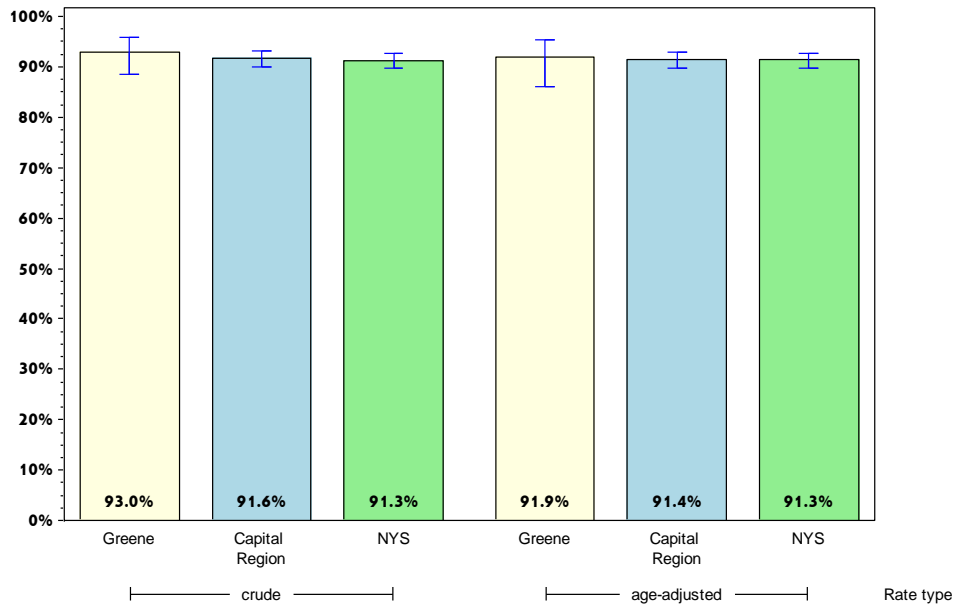
	Greene County			Capital Region		
	Est. # of Adults	Percent	95% CI	Est. # of Adults	Percent	95% CI
Total	11,299	28.5	(22.3-35.7)	215,186	28.6	(26.5-30.7)
Age		#				
18-24		#		5,786	6.1	(2.9-12.1)
25-34		#		9,822	8.0	(5.3-11.9)
35-44		#		22,489	19.5	(14.0-26.6)
45-64	5,045	34.9 [^]	(25.7-45.5)	96,695	36.8	(33.2-40.4)
65+	4,267	47.8	(39.2-56.6)	77,396	53.7	(49.8-57.5)
Race						
White, NH	9,566	31.3	(25.8-37.3)	186,495	29.1	(27.0-31.3)
Black, NH		#		8,607	23.1	(15.9-32.2)
Hispanic		#		5,766	22.5	(15.2-32.0)
Other, NH		#		14,318	28.7 [^]	(16.8-44.4)
Sex						
male	5,068	24.5 [^]	(15.8-35.9)	76,893	21.1	(18.7-23.8)
female	6,231	33.0	(25.5-41.6)	138,293	35.5	(32.5-38.6)
Age-adjusted^{&}		25.3	(20.0-31.5)		26.7	(24.7-28.8)

* Includes rheumatoid arthritis, gout, lupus, or fibromyalgia.
 & Percent is age-adjusted to the 2000 United States Population.
 # Rates with <10 in the numerator or <50 in the denominator are suppressed.
 ^ Highly variable rate (confidence interval with a half-width greater than 10).

Greene

Promote a Healthy and Safe Environment

Percentage of adults who consider their neighborhood suitable for walking and physical activity



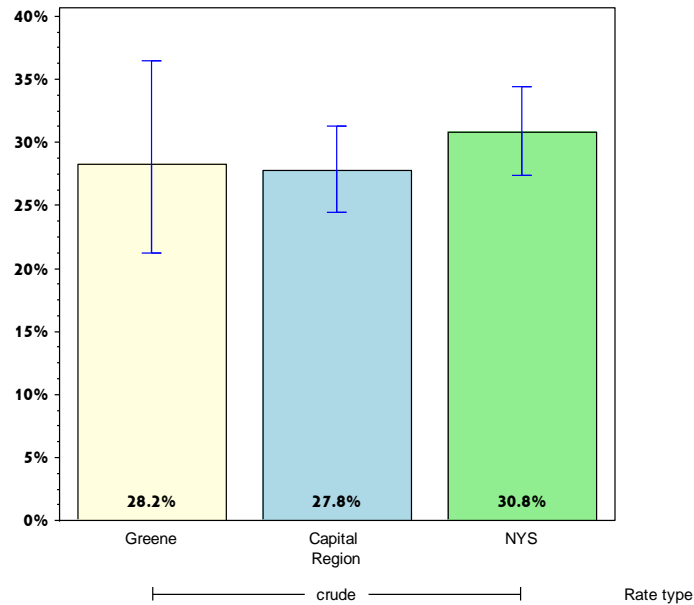
	Greene County			Capital Region		
	Est. # of Adults	Percent	95% CI	Est. # of Adults	Percent	95% CI
Total	34,146	93.0	(88.5-95.8)	655,340	91.6	(89.8-93.0)
Age		#				
18-24		#		77,470	89.2	(79.8-94.5)
25-34		#		102,214	86.1	(79.6-90.7)
35-44		#		102,548	93.2	(90.0-95.4)
45-64	12,270	92.8	(84.6-96.8)	234,077	92.8	(90.3-94.7)
65+	8,239	96.3	(92.4-98.2)	128,519	94.2	(92.1-95.7)
Race						
White, NH	27,138	91.3	(86.1-94.7)	565,421	92.4	(90.7-93.8)
Black, NH		#		29,736	87.1	(79.3-92.3)
Hispanic		#		20,397	90.9	(85.2-94.5)
Other, NH		#		39,787	84.2 [^]	(67.8-93.1)
Sex						
male	17,476	95.0	(88.2-98.0)	318,464	92.0	(89.0-94.3)
female	16,670	90.9	(84.0-95.0)	336,877	91.1	(89.1-92.8)
Age-adjusted^{&}		91.9	(86.0-95.4)		91.4	(89.6-92.9)

& Percent is age-adjusted to the 2000 United States Population.
 # Rates with <10 in the numerator or <50 in the denominator are suppressed.
 ^ Highly variable rate (confidence interval with a half-width greater than 10).

Greene

Promote a Health and Safe Environment

Percentage of adults aged 65+ years with at least one fall in the past 12 months



Greene County

Capital Region

	Est. # of Adults	Percent	95% CI	Est. # of Adults	Percent	95% CI
Total	2,513	28.2	(21.2-36.5)	38,155	27.8	(24.5-31.3)
Age⁺						
18-24						
25-34						
35-44						
45-64						
65+						
Race						
White, NH	2,429	29.0	(21.8-37.5)	36,209	28.6	(25.2-32.3)
Black, NH		#			#	
Hispanic		#			#	
Other, NH		#			#	
Sex						
male	912	24.2 [^]	(14.8-37.0)	15,469	25.5	(20.9-30.7)
female	1,602	31.2 [^]	(21.9-42.3)	22,685	29.6	(25.1-34.5)
Age-adjusted^{+,&}						

& Percent is age-adjusted to the 2000 United States Population.

+ Age-adjusted and age specific percent not generated for health indicators with age range limits.

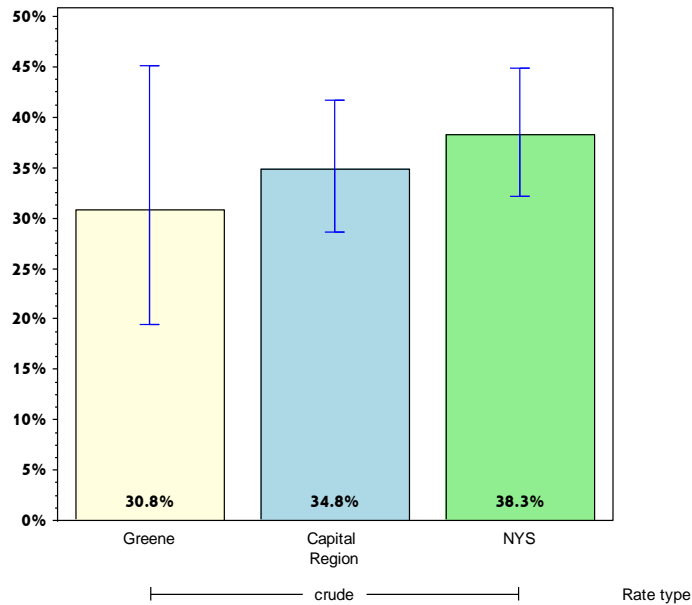
Rates with <10 in the numerator or <50 in the denominator are suppressed.

[^] Highly variable rate (confidence interval with a half-width greater than 10).

Greene

Promote a Health and Safe Environment

Among adults aged 65+ years with at least one fall in the past 12 months, percent that resulted in injury*



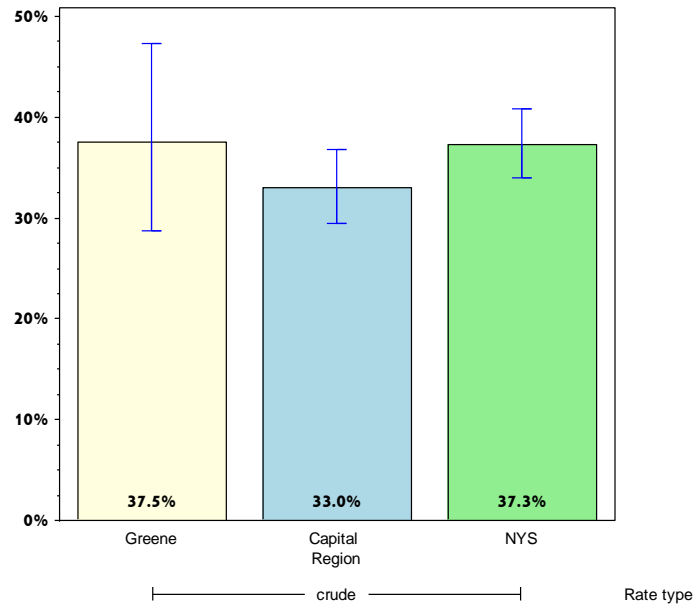
	Greene County			Capital Region		
	Est. # of Adults	Percent	95% CI	Est. # of Adults	Percent	95% CI
Total	773	30.8 [^]	(19.4-45.1)	13,231	34.8	(28.6-41.7)
Age⁺						
18-24						
25-34						
35-44						
45-64						
65+						
Race						
White, NH	773	31.8 [^]	(20.1-46.4)	12,411	34.4	(28.1-41.4)
Black, NH		#			#	
Hispanic		#			#	
Other, NH		#			#	
Sex						
male		#		4,370	28.2 [^]	(19.7-38.7)
female		#		8,861	39.4	(30.9-48.5)
Age-adjusted^{+,&}						

* Falls that limited regular activities or lead to doctor visits.
 & Percent is age-adjusted to the 2000 United States Population.
 + Age-adjusted and age specific percent not generated for health indicators with age range limits.
 # Rates with <10 in the numerator or <50 in the denominator are suppressed.
 ^ Highly variable rate (confidence interval with a half-width greater than 10).

Greene

Prevent HIV/STDs, Vaccine Preventable Diseases and Healthcare-Associated Infections

Percentage of adults aged 47-68 years reporting ever tested for Hepatitis C (HCV)



	Greene County			Capital Region		
	Est. # of Adults	Percent	95% CI	Est. # of Adults	Percent	95% CI
Total	4,935	37.5	(28.7-47.3)	76,642	33.0	(29.5-36.7)
Age⁺						
18-24						
25-34						
35-44						
45-64						
65+						
Race						
White, NH	3,943	34.4	(25.9-44.1)	67,188	33.0	(29.3-36.9)
Black, NH		#		4,175	45.6 [^]	(27.9-64.4)
Hispanic		#			#	
Other, NH		#			#	
Sex						
male	2,399	39.5 [^]	(27.1-53.3)	42,342	37.1	(31.6-42.9)
female	2,536	35.9 [^]	(23.8-50.0)	34,300	29.1	(24.6-34.0)
Age-adjusted^{+,&}						

& Percent is age-adjusted to the 2000 United States Population.

+ Age-adjusted and age specific percent not generated for health indicators with age range limits.

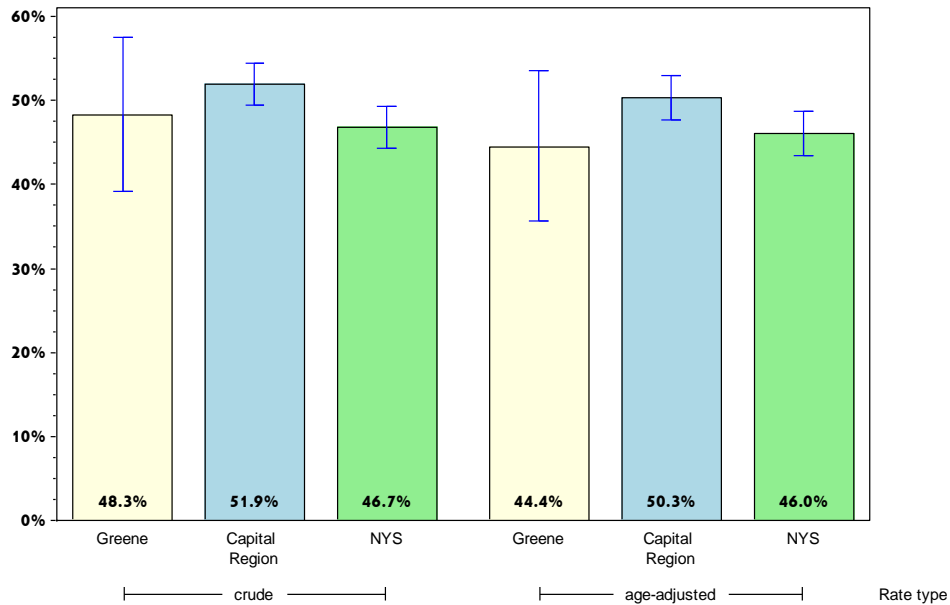
Rates with <10 in the numerator or <50 in the denominator are suppressed.

[^] Highly variable rate (confidence interval with a half-width greater than 10).

Greene

Prevent HIV/STDs, Vaccine Preventable Diseases and Healthcare-Associated Infections

Percentage of adults aged 18+ years with flu immunization in the past year*



	Greene County			Capital Region		
	Est. # of Adults	Percent	95% CI	Est. # of Adults	Percent	95% CI
Total	17,956	48.3	(39.1-57.5)	374,103	51.9	(49.4-54.4)
Age		#				
18-24		#		39,893	45.7 [^]	(35.3-56.5)
25-34		#		43,833	36.8	(30.7-43.4)
35-44		#		47,801	43.1	(36.6-49.8)
45-64	5,643	42.7 [^]	(33.2-52.7)	130,568	51.5	(47.7-55.2)
65+	5,877	65.7	(56.7-73.8)	104,721	75.8	(72.3-78.9)
Race						
White, NH	13,912	46.3	(39.6-53.1)	318,858	51.8	(49.2-54.3)
Black, NH		#		14,742	43.2 [^]	(31.3-55.9)
Hispanic		#		10,649	46.5 [^]	(36.6-56.8)
Other, NH		#		29,854	62.7 [^]	(49.2-74.6)
Sex						
male	9,242	49.8 [^]	(34.5-65.1)	168,675	48.4	(44.6-52.2)
female	8,714	46.7	(37.5-56.3)	205,428	55.2	(51.9-58.5)
Age-adjusted^{&}		44.4	(35.7-53.5)		50.3	(47.7-53.0)

* Includes flu shot or flu spray

& Percent is age-adjusted to the 2000 United States Population.

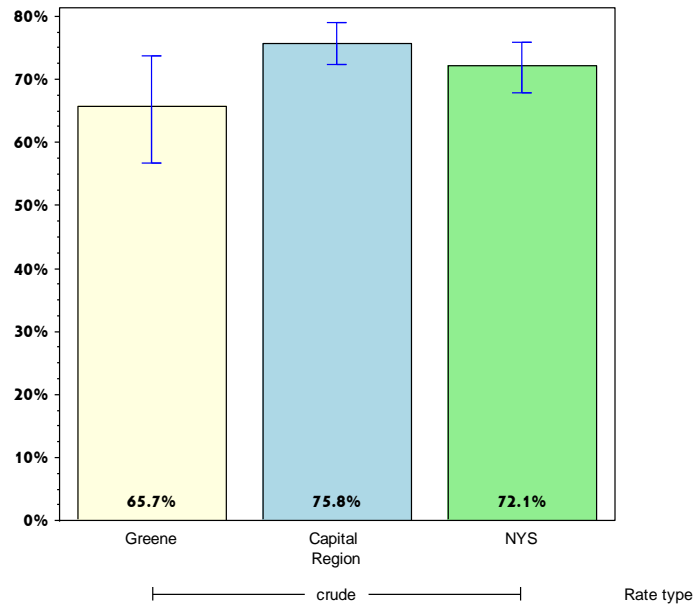
Rates with <10 in the numerator or <50 in the denominator are suppressed.

[^] Highly variable rate (confidence interval with a half-width greater than 10).

Greene

Prevent HIV/STDs, Vaccine Preventable Diseases and Healthcare-Associated Infections

Percentage of adults aged 65+ years with flu immunization in the past year*



	Greene County			Capital Region		
	Est. # of Adults	Percent	95% CI	Est. # of Adults	Percent	95% CI
Total Age⁺	5,877	65.7	(56.7-73.8)	104,721	75.8	(72.3-78.9)
18-24						
25-34						
35-44						
45-64						
65+						
Race						
White, NH	5,347	63.6	(54.3-72.0)	96,169	75.6	(72.0-78.8)
Black, NH		#			#	
Hispanic		#			#	
Other, NH		#			#	
Sex						
male	2,623	69.6 [^]	(54.7-81.3)	44,927	73.5	(67.8-78.5)
female	3,254	62.9 [^]	(51.2-73.3)	59,794	77.6	(73.3-81.4)
Age-adjusted^{+,&}						

* Includes flu shot or flu spray

& Percent is age-adjusted to the 2000 United States Population.

+ Age-adjusted and age specific percent not generated for health indicators with age range limits.

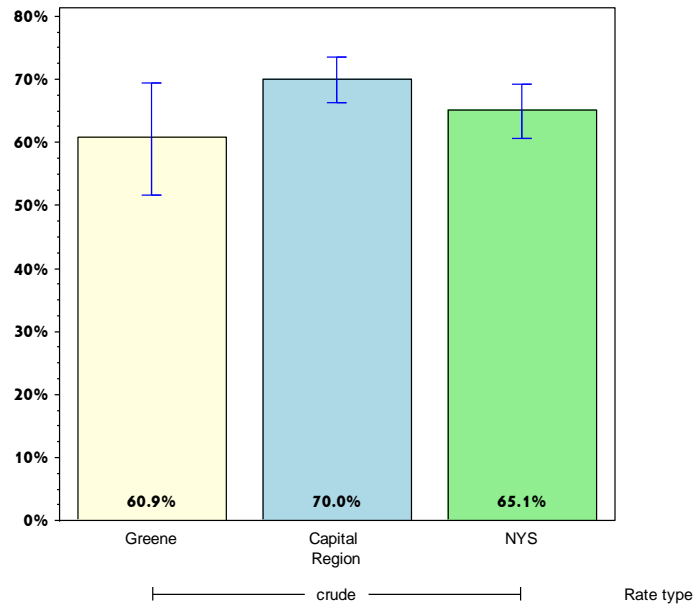
Rates with <10 in the numerator or <50 in the denominator are suppressed.

[^] Highly variable rate (confidence interval with a half-width greater than 10).

Greene

Prevent HIV/STDs, Vaccine Preventable Diseases and Healthcare-Associated Infections

Percentage of adults aged 65+ years with pneumococcal immunization



Greene County

Capital Region

	Est. # of Adults	Percent	95% CI	Est. # of Adults	Percent	95% CI
Total	5,319	60.9	(51.6-69.4)	92,729	70.0	(66.2-73.5)
Age⁺						
18-24						
25-34						
35-44						
45-64						
65+						
Race						
White, NH	4,961	60.4	(51.0-69.2)	86,365	71.1	(67.2-74.6)
Black, NH		#			#	
Hispanic		#			#	
Other, NH		#			#	
Sex						
male	2,268	62.8 [^]	(47.6-75.8)	36,740	63.6	(57.5-69.3)
female	3,051	59.5 [^]	(47.8-70.2)	55,989	74.9	(70.2-79.2)
Age-adjusted^{+,&}						

& Percent is age-adjusted to the 2000 United States Population.

+ Age-adjusted and age specific percent not generated for health indicators with age range limits.

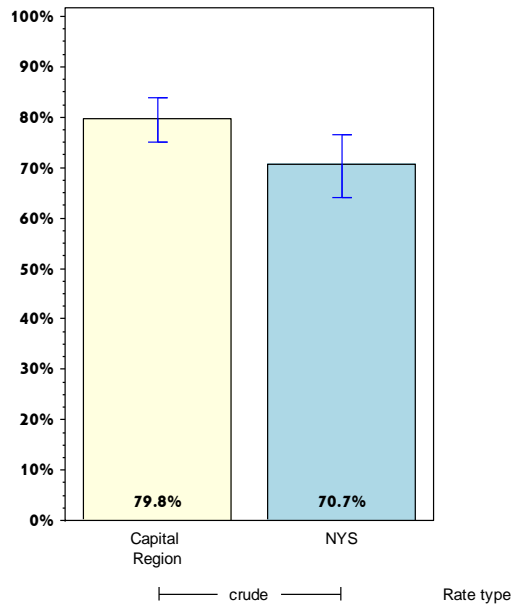
Rates with <10 in the numerator or <50 in the denominator are suppressed.

[^] Highly variable rate (confidence interval with a half-width greater than 10).

Greene

Promote Healthy Women, Infants, and Children

Percentage of women aged 18-44 years who had dental visit within the last year



Greene County

Capital Region

	Est. # of Adults	Percent	95% CI	Est. # of Adults	Percent	95% CI
Total		#		120,363	79.8	(75.1-83.8)
Age⁺						
18-24						
25-34						
35-44						
45-64						
65+						
Race						
White, NH		#		97,127	82.5	(77.5-86.6)
Black, NH		#			#	
Hispanic		#			#	
Other, NH		#			#	
Sex						
male		#			#	
female		#		120,363	79.8	(75.1-83.8)
Age-adjusted^{+,&}						

& Percent is age-adjusted to the 2000 United States Population.

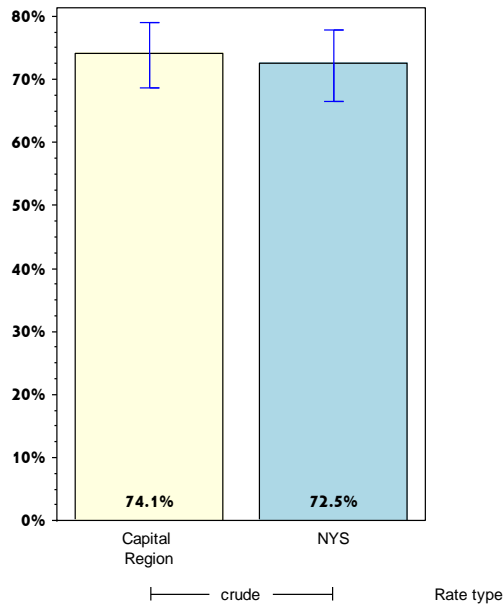
+ Age-adjusted and age specific percent not generated for health indicators with age range limits.

Rates with <10 in the numerator or <50 in the denominator are suppressed.

Greene

Promote Healthy Women, Infants, and Children

Women aged 18-44 years who saw a doctor for a routine checkup within the last year



	Greene County			Capital Region		
	Est. # of Adults	Percent	95% CI	Est. # of Adults	Percent	95% CI
Total		#		119,498	74.1	(68.6-79.0)
Age⁺						
18-24						
25-34						
35-44						
45-64						
65+						
Race						
White, NH		#		91,769	72.7	(66.2-78.4)
Black, NH		#		9,034	73.0 [^]	(53.7-86.3)
Hispanic		#		4,441	65.9 [^]	(48.1-80.1)
Other, NH		#			#	
Sex						
male		#			#	
female		#		119,498	74.1	(68.6-79.0)
Age-adjusted^{+,&}						

& Percent is age-adjusted to the 2000 United States Population.

+ Age-adjusted and age specific percent not generated for health indicators with age range limits.

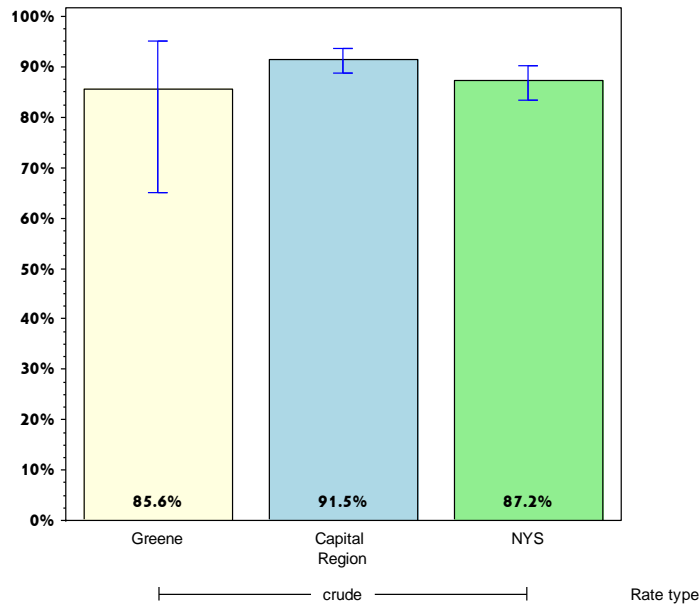
Rates with <10 in the numerator or <50 in the denominator are suppressed.

[^] Highly variable rate (confidence interval with a half-width greater than 10).

Greene

Promote Healthy Women, Infants, and Children

Percentage of women aged 18-64 years with health care coverage



Greene County

Capital Region

	Est. # of Adults	Percent	95% CI	Est. # of Adults	Percent	95% CI
Total	11,070	85.6 [^]	(65.1-95.0)	272,288	91.5	(88.8-93.5)
Age⁺						
18-24						
25-34						
35-44						
45-64						
65+						
Race						
White, NH	10,744	95.0	(90.4-97.4)	231,253	92.5	(89.8-94.6)
Black, NH		#		13,163	85.1 [^]	(67.6-94.0)
Hispanic		#		7,840	79.4 [^]	(67.0-88.0)
Other, NH		#		20,032	89.6 [^]	(68.0-97.2)
Sex						
male		#			#	
female	11,070	85.6 [^]	(65.1-95.0)	272,288	91.5	(88.8-93.5)
Age-adjusted^{+,&}						

& Percent is age-adjusted to the 2000 United States Population.

+ Age-adjusted and age specific percent not generated for health indicators with age range limits.

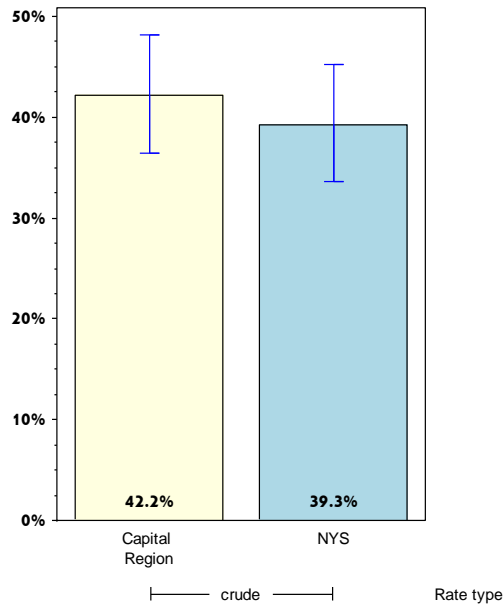
Rates with <10 in the numerator or <50 in the denominator are suppressed.

[^] Highly variable rate (confidence interval with a half-width greater than 10).

Greene

Promote Healthy Women, Infants, and Children

Percentage of women aged 18-44 years whose health care provider discussed planning a healthy pregnancy



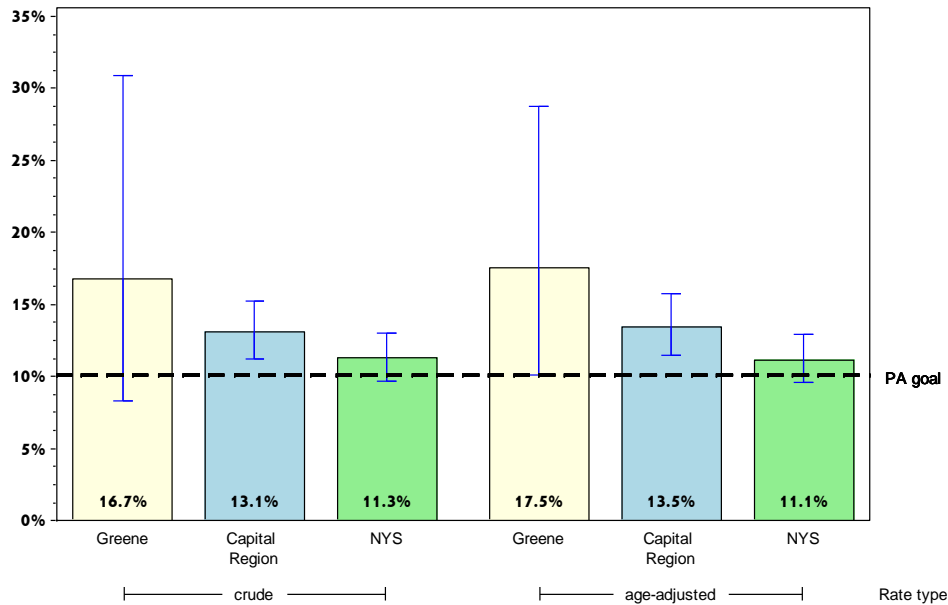
	Greene County			Capital Region		
	Est. # of Adults	Percent	95% CI	Est. # of Adults	Percent	95% CI
Total		#		63,605	42.2	(36.4-48.1)
Age⁺						
18-24						
25-34						
35-44						
45-64						
65+						
Race						
White, NH		#		51,464	43.9	(37.5-50.6)
Black, NH		#			#	
Hispanic		#			#	
Other, NH		#			#	
Sex						
male		#			#	
female		#		63,605	42.2	(36.4-48.1)
Age-adjusted^{+,&}						

& Percent is age-adjusted to the 2000 United States Population.
 + Age-adjusted and age specific percent not generated for health indicators with age range limits.
 # Rates with <10 in the numerator or <50 in the denominator are suppressed.

Greene

Promote Mental Health and Prevention Substance Abuse

Percentage of adults with poor mental health for 14 or more days in the last month



	Greene County			Capital Region		
	Est. # of Adults	Percent	95% CI	Est. # of Adults	Percent	95% CI
Total	6,570	16.7 [^]	(8.3-30.9)	97,381	13.1	(11.2-15.2)
Age						
18-24		#		15,415	16.5	(10.0-25.9)
25-34		#		21,884	17.7	(12.4-24.8)
35-44		#		15,297	13.4	(9.0-19.6)
45-64	1,683	11.7	(6.6-20.0)	35,365	13.7	(11.1-16.8)
65+		#		8,895	6.3	(4.5-8.8)
Race						
White, NH	2,477	8.2	(5.2-12.7)	77,087	12.2	(10.3-14.4)
Black, NH		#		10,860	29.8 [^]	(18.5-44.2)
Hispanic		#		4,600	19.0	(12.7-27.4)
Other, NH		#		4,834	9.7 [^]	(4.2-20.9)
Sex						
male	4,786	23.1 [^]	(9.3-46.9)	45,948	12.7	(9.9-16.1)
female	1,784	9.6	(5.4-16.4)	51,433	13.5	(11.2-16.2)
Age-adjusted^{&}		17.5 [^]	(10.1-28.8)		13.5	(11.5-15.7)

& Percent is age-adjusted to the 2000 United States Population.

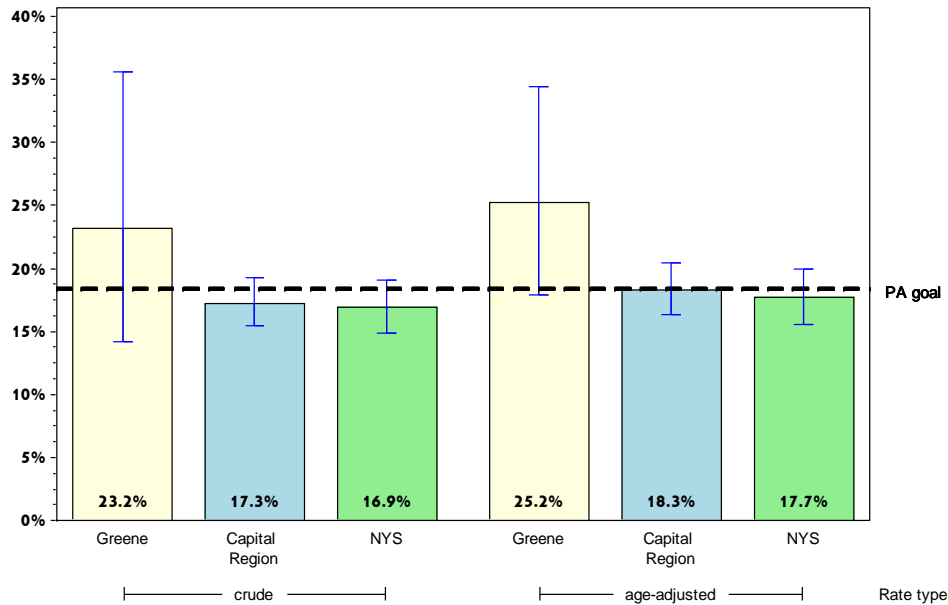
Rates with <10 in the numerator or <50 in the denominator are suppressed.

[^] Highly variable rate (confidence interval with a half-width greater than 10).

Greene

Promote Mental Health and Prevention Substance Abuse

Percentage of adult binge drinking during the past month*



Greene County

Capital Region

	Est. # of Adults	Percent	95% CI	Est. # of Adults	Percent	95% CI
Total	8,805	23.2 [^]	(14.2-35.6)	124,613	17.3	(15.4-19.3)
Age						
18-24	#	#		26,578	29.9 [^]	(21.5-40.0)
25-34	#	#		33,259	27.9	(22.6-33.9)
35-44	#	#		21,657	19.6	(15.1-25.1)
45-64	2,049	14.8	(8.4-24.6)	35,598	14.0	(11.9-16.6)
65+	540	6.0	(3.1-11.5)	6,695	4.8	(3.4-6.8)
Race						
White, NH	5,095	16.9	(12.2-23.0)	109,332	17.7	(15.8-19.8)
Black, NH	#	#		6,496	18.9 [^]	(9.3-34.8)
Hispanic	#	#		3,636	15.3	(9.8-23.0)
Other, NH	#	#		5,148	11.1 [^]	(4.9-23.0)
Sex						
male	5,859	30.2 [^]	(15.3-51.0)	76,161	21.9	(19.0-25.1)
female	2,946	15.9	(9.8-24.6)	48,452	12.9	(10.7-15.5)
Age-adjusted^{&}		25.2	(17.9-34.4)		18.3	(16.3-20.4)

* Men who have five or more drinks , women having four or more drinks on one occasion

& Percent is age-adjusted to the 2000 United States Population.

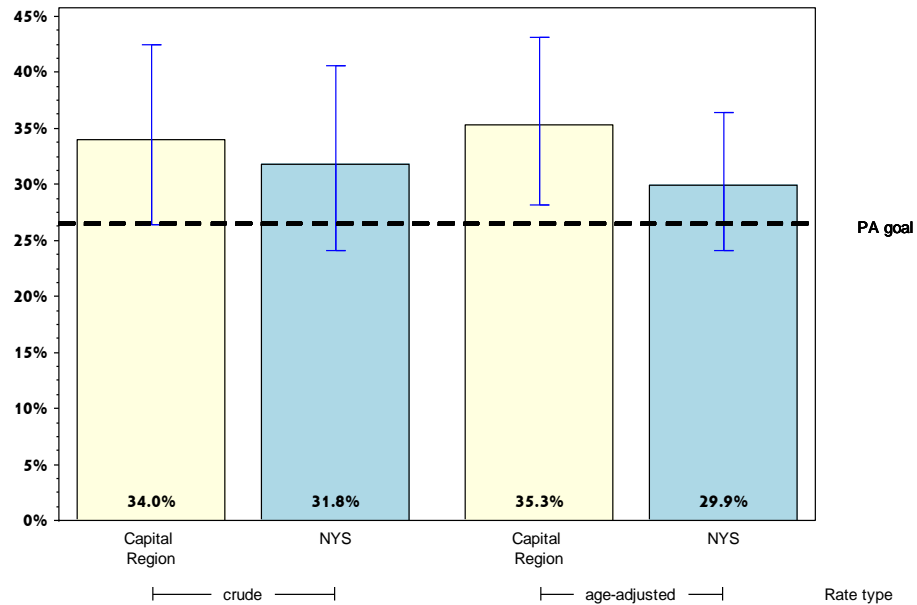
Rates with <10 in the numerator or <50 in the denominator are suppressed.

[^] Highly variable rate (confidence interval with a half-width greater than 10).

Greene

Promote Mental Health and Prevention Substance Abuse

Percentage of cigarette smoking among adults who report poor mental health



	Greene County			Capital Region		
	Est. # of Adults	Percent	95% CI	Est. # of Adults	Percent	95% CI
Total		#		32,029	34.0	(26.4-42.5)
Age		#			#	
18-24		#			#	
25-34		#		8,601	39.7 [^]	(22.1-60.5)
35-44		#			#	
45-64		#		10,462	29.8 [^]	(20.9-40.6)
65+		#			#	
Race		#			#	
White, NH		#		25,081	33.3	(25.0-42.8)
Black, NH		#			#	
Hispanic		#			#	
Other, NH		#			#	
Sex		#			#	
male		#		17,555	39.9 [^]	(27.2-54.2)
female		#		14,474	28.8	(20.8-38.5)
Age-adjusted^{&}		#			35.3	(28.2-43.2)

& Percent is age-adjusted to the 2000 United States Population.

Rates with <10 in the numerator or <50 in the denominator are suppressed.

[^] Highly variable rate (confidence interval with a half-width greater than 10).