

eBRFSS 2013-2014 Health Indicators: Albany

General Description	2
Improve Health Status and Reduce Health Disparities	3
Percentage of adults who did not receive medical care because of cost	3
Percentage of adults who have a regular health care provider	4
Percentage of adults who had a dentist visit within the past year	5
Percentage of adults living with a disability.....	6
Percentage of adults aged 18-64 years with healthcare coverage	7
Percentage of adults aged 18-64 years who saw a doctor for a routine checkup within the last year	8
Percentage of adults experiencing housing insecurity in the past 12 months.....	9
Percentage of adults experiencing food insecurity in the past 12 months.....	10
Percentage of adults with poor self-reported health	11
Percentage of adults who report 14 or more days of poor physical health.....	12
Prevent Chronic Diseases	13
Percentage of adults who are obese	13
Percentage of adults with an annual household income less than \$25,000 who are obese	14
Percentage of adults living with a disability who are obese	15
Percentage of adults overweight or obese	16
Percentage of adults who participated in leisure time physical activity in the past 30 days.....	17
Percentage of adults who consume one or more sugary drinks daily	18
Percentage of adults who consume fast-food three or more times per week	19
Percentage of adults with physician diagnosed diabetes	20
Percentage of adults who are current smokers	21
Percentage of adults with annual household income less than \$25,000 who are current smokers	22
Percentage of adults aged 18-24 years who are current smokers.....	23
Percentage of women aged 50-74 years receiving breast cancer screening based on recent guidelines	24
Percentage of women aged 50-74 years with annual household income of less than \$25,000 receiving breast cancer screening based on recent guidelines.....	25
Percentage of women aged 21-65 years receiving cervical cancer screening based on recent guidelines	26
Percentage of women aged 21-65 years with annual household income of less than \$25,000 receiving cervical cancer screening based on recent guidelines.....	27
Percentage of adults aged 50-75 years receiving colorectal cancer screening based on recent guidelines.....	28
Percentage of adults aged 50-75 years with annual household income less than \$25,000 receiving colorectal cancer screening based on recent guidelines.....	29
Percentage of adults who had a test for high blood sugar or diabetes within the past three years	30
Percentage of adults with physician-diagnosed prediabetes	31
Percentage of adults with physician-diagnosed high blood pressure.....	32
Percentage of adults with diagnosed high blood pressure taking high blood pressure medication	33
Percentage of adults with current asthma	34
Percent of adults with cholesterol checked.....	35
Percentage of adults 18 years and older with elevated cholesterol.....	36
Percentage of adults who have taken a course or class to learn how to manage their chronic disease or condition	37
Percentage of adults with arthritis	38
Promote a Healthy and Safe Environment	39
Percentage of adults who consider their neighborhood suitable for walking and physical activity.....	39
Percentage of adults aged 65+ years with at least one fall in the past 12 months.....	40
Among adults aged 65+ years with at least one fall in the past 12 months, percent that resulted in injury.....	41
Prevent HIV/STDs, Vaccine Preventable Diseases and Healthcare-Associated Infections.....	42
Percentage of adults aged 47-68 years reporting ever tested for Hepatitis C (HCV).....	42
Percentage of adults aged 18+ years with flu immunization in the past year	43
Percentage of adults aged 65+ years with flu immunization in the past year	44
Percentage of adults aged 65+ years with pneumococcal immunization.....	45
Promote Healthy Women, Infants, and Children	46
Percentage of women aged 18-44 years who had dental visit within the last year	46
Women aged 18-44 years who saw a doctor for a routine checkup within the last year.....	47
Percentage of women aged 18-64 years with health care coverage	48
Percentage of women aged 18-44 years whose health care provider discussed planning a healthy pregnancy	49
Promote Mental Health and Prevention Substance Abuse	50
Percentage of adults with poor mental health for 14 or more days in the last month	50
Percentage of adult binge drinking during the past month	51
Percentage of cigarette smoking among adults who report poor mental health.....	52

General Description

The New York State Expanded Behavioral Risk Factor Surveillance System 2013-2014 (2014 eBRFSS) was design to supplement the Center for Disease Control and Prevention (CDC) Behavioral Risk Factor Surveillance System (BRFSS), which is conducted annually in New York State. The purpose of the 2014 eBRFSS was to produce local information on key public health issues. Data for the project were collected from April 15, 2013 to May 10, 2014. The 2014 eBRFSS reached both households with landline telephones and households which only had cell phones. Like the annual BRFSS, New York State's 2014 eBRFSS was designed to be representative of the non-institutionalized adult household population, aged 18 years and older.

Reported Health Indicators

There are a total of 50 health indicators included in the report. The health indicators include 10 measures included in the New York State Department of Health's Prevention Agenda, NYS Health Innovation Plan (SHIP), Delivery System Reform Incentive Payment (DSRIP) Program, or the NYS Community Health Indicator Reports (CHIRS). An additional 40 important health indicators are also included. The indicators are organized by the Priority Area of the Prevention Agenda and are reported statewide, by region, and by county.

Data Collection Methodology, Sampling and Weighting

The data collection methods for the 2014 eBRFSS aligned with the CDC's standard annual BRFSS methods. The 2014 eBRFSS questionnaire used standard questions from the BRFSS. Survey interviews were conducted in both English and Spanish. There were 31,690 completed interviews.

The sampling plan for the eBRFSS was developed to result in valid health indicator estimates for New York City (NYC) and each of the 57 counties outside NYC. The sampling approach stratified landlines by county and implemented a disproportionate stratified sampling design that accounted for both listed-households and unlisted numbers. Cell phone households were accounted for through additional strata that covered contiguous groups of counties.

Data were weighted to represent the population using a methodology known as iterative proportional fitting (raking). Raking adjusted the data so that groups underrepresented in the sample were more accurately represented in the estimated rates. Raking also enabled surveys conducted by cell phone to be included in the weighting and to accurately match sample distributions of specified demographic characteristics of the population. The raking categories included in the eBRFSS were: age, gender, race/ethnicity, education, marital status, owner/renter status, telephone usage (i.e. landline and cell phone combinations), and county of residence.

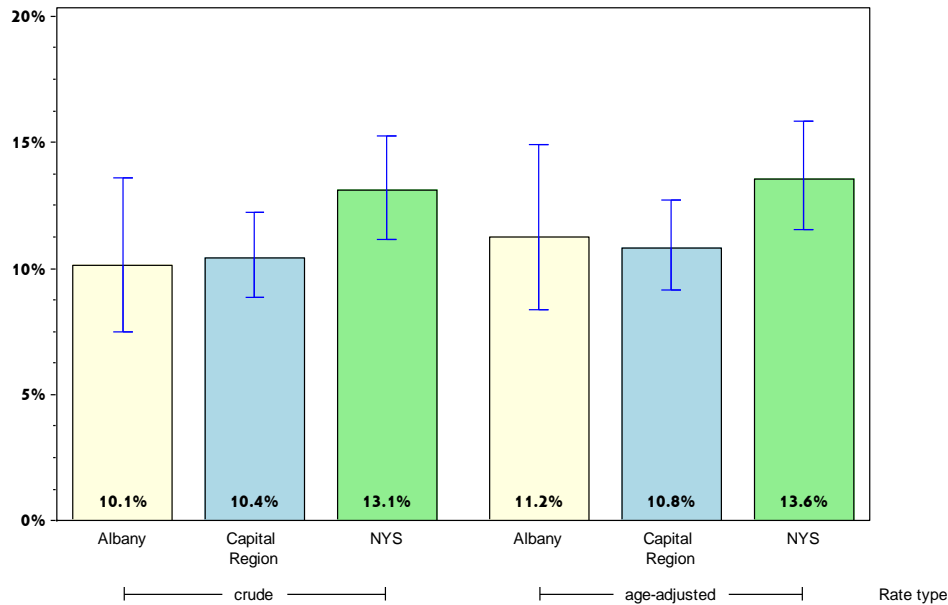
Limitations of Data Use:

During data analysis, criteria were applied to suppress rates based on too few surveys to be reliable and to identify rates that are highly variable. Rates in which less than 10 respondents were in the numerator or less than 50 respondents were in the denominator were considered unreliable and suppressed from reporting. Rates considered to have high variability due to having confidence limits greater than $\pm 10\%$ are noted.

Albany

Improve Health Status and Reduce Health Disparities

Percentage of adults who did not receive medical care because of cost*



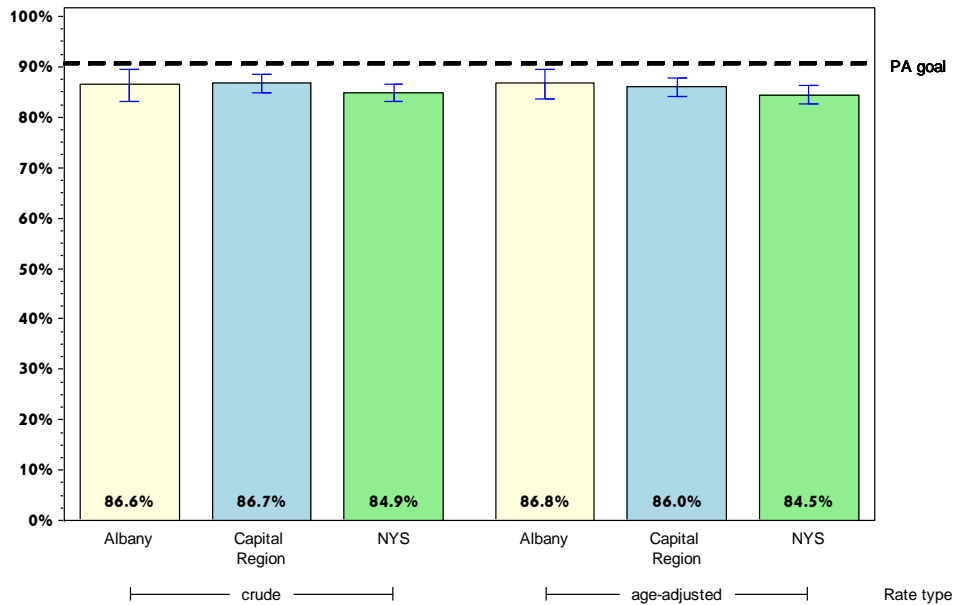
	Albany County			Capital Region		
	Est. # of Adults	Percent	95% CI	Est. # of Adults	Percent	95% CI
Total	24,936	10.1	(7.5-13.6)	78,780	10.4	(8.9-12.2)
Age		#				
18-24				9,000	9.5	(5.8-15.1)
25-34	6,271	15.6 [^]	(7.8-28.7)	21,597	17.3	(12.2-23.9)
35-44	4,790	15.1 [^]	(8.6-25.1)	12,616	11.0	(7.4-16.0)
45-64	10,169	12.7	(7.7-20.1)	29,082	11.0	(8.6-14.1)
65+	2,267	5.1	(2.4-10.4)	6,173	4.3	(2.9-6.2)
Race						
White, NH	20,013	10.2	(7.1-14.5)	61,538	9.6	(7.9-11.5)
Black, NH	2,293	15.0	(9.0-24.2)	5,810	15.6	(10.2-23.1)
Hispanic	1,721	16.9 [^]	(9.2-28.9)	6,161	24.0	(16.3-33.9)
Other, NH		#		5,270	10.6 [^]	(4.3-24.0)
Sex						
male	11,359	9.7	(6.1-15.1)	35,709	9.7	(7.5-12.5)
female	13,577	10.6	(7.0-15.5)	43,071	11.1	(9.0-13.6)
Age-adjusted^{&}		11.2	(8.4-14.9)		10.8	(9.2-12.7)

* Among people needing to see a doctor in the past 12 months
 & Percent is age-adjusted to the 2000 United States Population.
 # Rates with <10 in the numerator or <50 in the denominator are suppressed.
 ^ Highly variable rate (confidence interval with a half-width greater than 10).

Albany

Improve Health Status and Reduce Health Disparities

Percentage of adults who have a regular health care provider



Albany County

Capital Region

	Est. # of Adults	Percent	95% CI	Est. # of Adults	Percent	95% CI
Total	213,097	86.6	(83.2-89.4)	655,372	86.7	(84.8-88.4)
Age						
18-24	32,419	75.3 [^]	(61.9-85.1)	69,621	73.2	(64.4-80.5)
25-34	27,870	69.2 [^]	(57.7-78.6)	89,783	71.5	(64.8-77.5)
35-44	28,965	90.6	(82.3-95.2)	102,018	88.6	(84.5-91.7)
45-64	74,679	93.2	(89.8-95.6)	241,515	92.1	(89.9-93.9)
65+	43,690	98.4	(95.0-99.5)	140,729	97.2	(96.0-98.1)
Race						
White, NH	170,637	87.2	(83.1-90.4)	563,297	87.5	(85.5-89.3)
Black, NH	11,471	76.3 [^]	(64.9-84.9)	27,716	74.9 [^]	(61.2-85.0)
Hispanic	8,459	82.9 [^]	(70.9-90.6)	20,329	79.8	(71.9-86.0)
Other, NH	22,531	89.2 [^]	(78.4-94.9)	44,030	88.6	(81.8-93.0)
Sex						
male	94,034	80.1	(73.7-85.2)	296,915	81.0	(77.7-84.0)
female	119,064	92.5	(89.5-94.7)	358,457	92.0	(90.1-93.6)
Age-adjusted^{&}		86.8	(83.6-89.5)		86.0	(84.1-87.8)

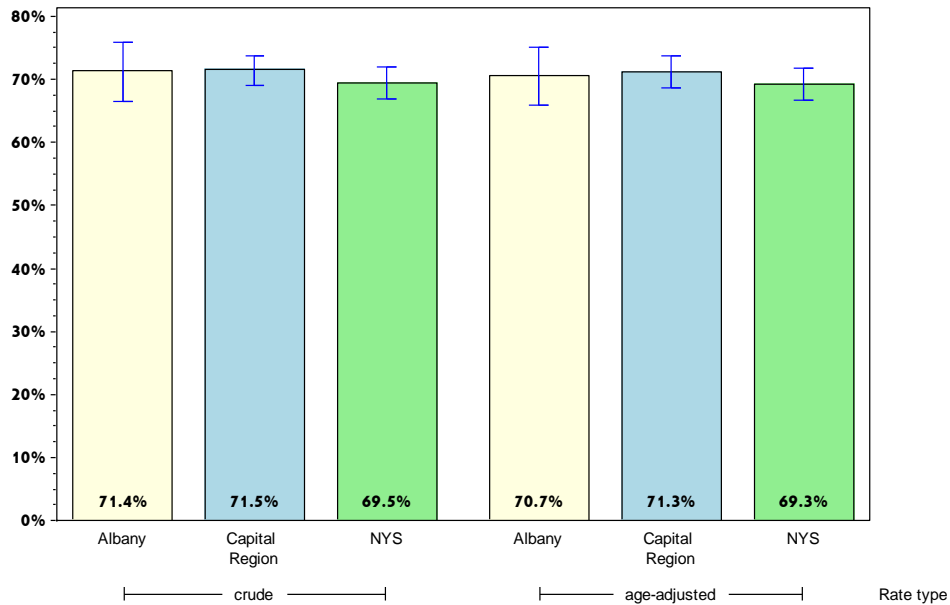
& Percent is age-adjusted to the 2000 United States Population.

[^] Highly variable rate (confidence interval with a half-width greater than 10).

Albany

Improve Health Status and Reduce Health Disparities

Percentage of adults who had a dentist visit within the past year



Albany County

Capital Region

	Est. # of Adults	Percent	95% CI	Est. # of Adults	Percent	95% CI
Total	164,024	71.4	(66.5-75.9)	503,799	71.5	(69.1-73.8)
Age						
18-24	26,673	70.6 [^]	(49.9-85.3)	60,059	72.7 [^]	(61.6-81.5)
25-34	24,090	65.5 [^]	(53.7-75.7)	80,087	68.6	(61.6-75.0)
35-44	22,336	71.2 [^]	(59.0-81.0)	80,262	72.9	(66.8-78.3)
45-64	57,800	74.2	(67.0-80.3)	183,034	73.5	(69.8-76.8)
65+	28,403	69.4	(61.2-76.4)	90,249	67.0	(63.2-70.7)
Race						
White, NH	129,512	70.7	(65.0-75.8)	436,972	72.6	(70.0-75.0)
Black, NH	7,019	52.5 [^]	(40.2-64.5)	17,633	53.0 [^]	(40.6-64.9)
Hispanic	6,761	72.9 [^]	(58.9-83.4)	14,975	67.1 [^]	(56.8-76.0)
Other, NH	20,731	86.6 [^]	(73.9-93.6)	34,218	73.1 [^]	(60.5-82.7)
Sex						
male	74,476	67.3	(59.2-74.5)	231,254	67.5	(63.6-71.1)
female	89,549	75.2	(69.5-80.1)	272,544	75.4	(72.6-78.0)
Age-adjusted^{&}		70.7	(65.8-75.1)		71.3	(68.7-73.7)

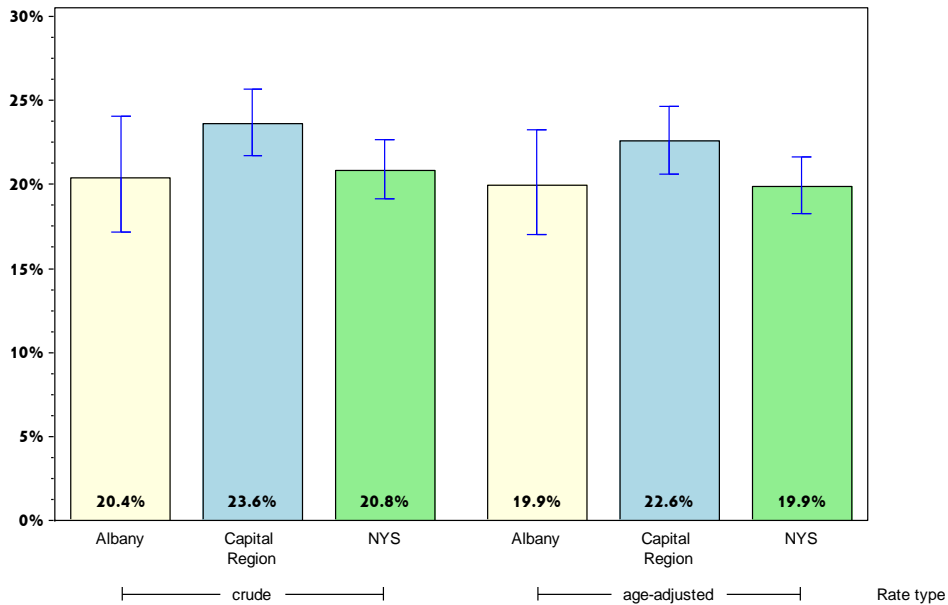
& Percent is age-adjusted to the 2000 United States Population.

[^] Highly variable rate (confidence interval with a half-width greater than 10).

Albany

Improve Health Status and Reduce Health Disparities

Percentage of adults living with a disability*



	Albany County			Capital Region		
	Est. # of Adults	Percent	95% CI	Est. # of Adults	Percent	95% CI
Total	49,014	20.4	(17.2-24.1)	175,208	23.6	(21.7-25.7)
Age		#				
18-24				8,717	9.4	(5.9-14.5)
25-34	4,095	11.0	(6.0-19.2)	20,013	16.5	(11.4-23.4)
35-44	4,012	12.6	(7.4-20.5)	18,192	16.2	(12.0-21.5)
45-64	22,279	28.0	(21.6-35.5)	74,792	28.8	(25.5-32.3)
65+	15,290	35.2	(27.9-43.2)	51,545	36.3	(32.6-40.1)
Race						
White, NH	40,387	21.2	(17.5-25.5)	152,818	24.2	(22.1-26.4)
Black, NH	3,226	21.5 [^]	(13.9-31.6)	8,407	23.4	(16.1-32.7)
Hispanic	2,788	27.7 [^]	(16.3-42.9)	6,619	26.5 [^]	(18.4-36.7)
Other, NH	2,613	10.6 [^]	(4.4-23.4)	7,364	14.9 [^]	(8.4-25.1)
Sex						
male	21,579	18.9	(14.6-24.2)	83,089	23.2	(20.3-26.4)
female	27,435	21.8	(17.2-27.1)	92,118	24.1	(21.6-26.8)
Age-adjusted^{&}		19.9	(17.0-23.2)		22.6	(20.6-24.6)

* Limited activities (physical, mental, or emotional problems); need of special equipment (e.g. cane, wheel chair).

& Percent is age-adjusted to the 2000 United States Population.

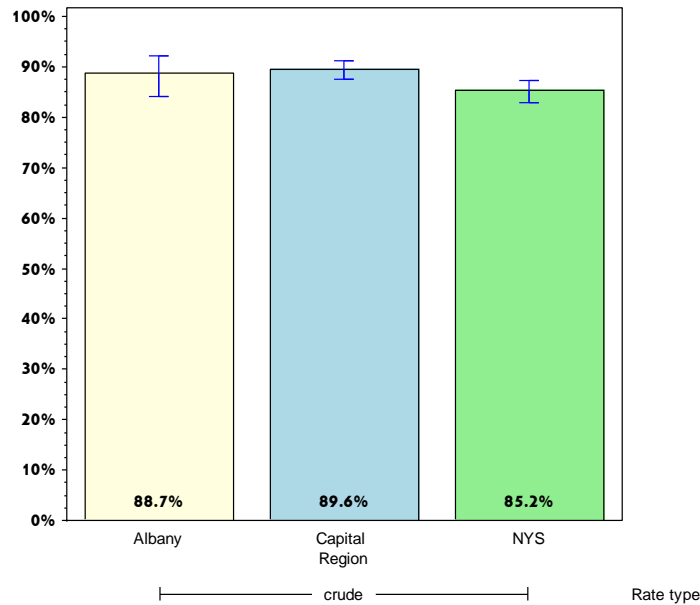
Rates with <10 in the numerator or <50 in the denominator are suppressed.

[^] Highly variable rate (confidence interval with a half-width greater than 10).

Albany

Improve Health Status and Reduce Health Disparities

Percentage of adults aged 18-64 years with healthcare coverage



Albany County

Capital Region

	Est. # of Adults	Percent	95% CI	Est. # of Adults	Percent	95% CI
Total	173,160	88.7	(84.1-92.0)	534,574	89.6	(87.6-91.2)
Age⁺						
18-24						
25-34						
35-44						
45-64						
65+						
Race						
White, NH	135,677	89.0	(83.2-92.9)	453,130	90.5	(88.4-92.3)
Black, NH	10,585	86.3 [^]	(75.5-92.8)	27,834	87.0	(77.3-93.0)
Hispanic	6,943	73.5 [^]	(57.4-85.1)	16,505	68.9 [^]	(57.4-78.4)
Other, NH	19,957	94.8	(85.5-98.3)	37,106	91.8 [^]	(79.9-96.9)
Sex						
male	83,294	86.3	(79.0-91.4)	262,286	87.7	(84.6-90.2)
female	89,866	91.0	(84.7-94.9)	272,288	91.5	(88.8-93.5)
Age-adjusted^{+,&}						

& Percent is age-adjusted to the 2000 United States Population.

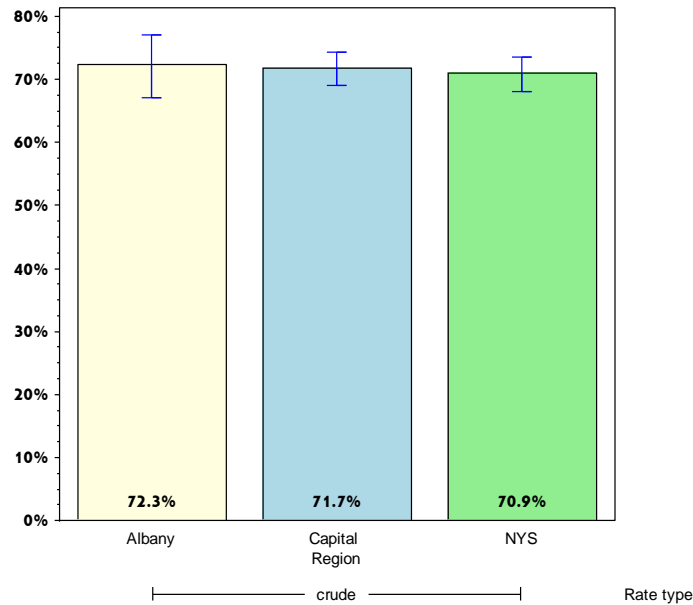
+ Age-adjusted and age specific percent not generated for health indicators with age range limits.

[^] Highly variable rate (confidence interval with a half-width greater than 10).

Albany

Improve Health Status and Reduce Health Disparities

Percentage of adults aged 18-64 years who saw a doctor for a routine checkup within the last year



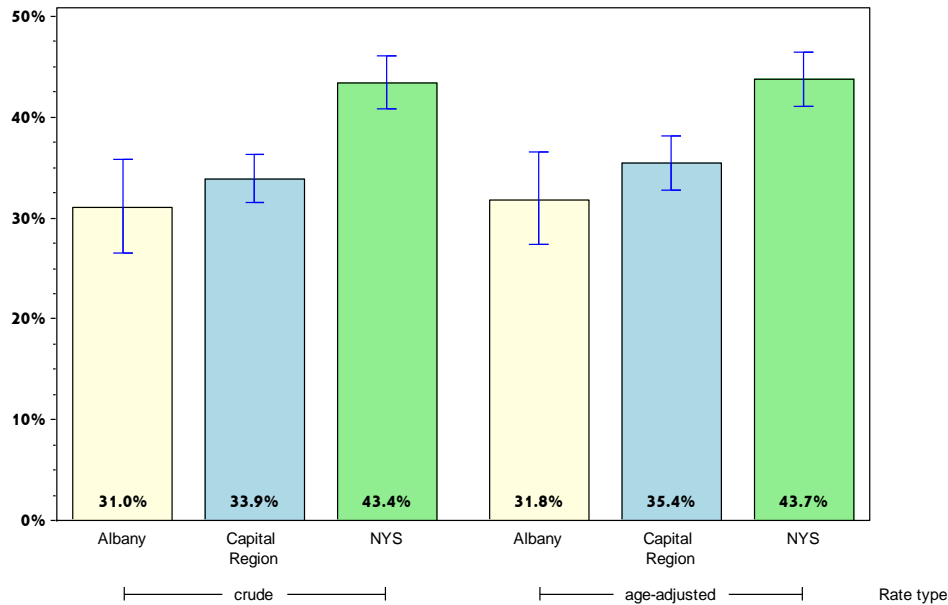
	Albany County			Capital Region		
	Est. # of Adults	Percent	95% CI	Est. # of Adults	Percent	95% CI
Total	140,429	72.3	(67.1-77.0)	426,846	71.7	(69.1-74.2)
Age⁺						
18-24						
25-34						
35-44						
45-64						
65+						
Race						
White, NH	106,245	70.1	(63.9-75.6)	350,182	70.2	(67.3-73.0)
Black, NH	9,002	71.9 [^]	(58.7-82.2)	25,151	78.0 [^]	(67.5-85.8)
Hispanic	7,719	81.0 [^]	(67.9-89.5)	17,511	72.3	(62.4-80.4)
Other, NH	17,463	84.9 [^]	(71.3-92.7)	34,002	85.1	(76.5-91.0)
Sex						
male	65,359	68.0	(59.9-75.1)	198,036	66.4	(62.4-70.2)
female	75,070	76.5	(69.2-82.5)	228,809	77.1	(73.6-80.3)
Age-adjusted^{+,&}						

& Percent is age-adjusted to the 2000 United States Population.
 + Age-adjusted and age specific percent not generated for health indicators with age range limits.
 ^ Highly variable rate (confidence interval with a half-width greater than 10).

Albany

Improve Health Status and Reduce Health Disparities

Percentage of adults experiencing housing insecurity in the past 12 months*



Albany County

Capital Region

	Est. # of Adults	Percent	95% CI	Est. # of Adults	Percent	95% CI
Total	67,327	31.0	(26.5-35.8)	227,646	33.9	(31.5-36.4)
Age						
18-24	10,182	31.4 [^]	(17.7-49.3)	25,551	37.1 [^]	(27.3-48.2)
25-34	14,723	42.5 [^]	(31.6-54.3)	46,389	43.5	(36.8-50.5)
35-44	9,295	30.2 [^]	(20.3-42.4)	44,836	41.9	(35.5-48.6)
45-64	26,051	34.7	(27.4-42.8)	84,567	34.2	(30.7-38.0)
65+	7,001	17.7	(12.6-24.2)	25,225	19.1	(16.3-22.3)
Race						
White, NH	54,606	31.5	(26.4-37.1)	186,009	32.2	(29.7-34.9)
Black, NH	5,516	41.7 [^]	(30.5-53.8)	16,688	57.1 [^]	(47.0-66.6)
Hispanic	3,531	39.2 [^]	(25.6-54.7)	10,980	49.7 [^]	(39.3-60.2)
Other, NH	3,675	17.0 [^]	(8.2-32.0)	13,970	32.2 [^]	(21.0-46.0)
Sex						
male	30,573	29.8	(23.6-36.9)	100,235	31.3	(27.8-35.0)
female	36,754	32.1	(25.9-38.9)	127,411	36.3	(33.1-39.6)
Age-adjusted^{&}		31.8	(27.4-36.6)		35.4	(32.8-38.1)

* Worried or stressed about having enough money to pay for rent or mortgage.

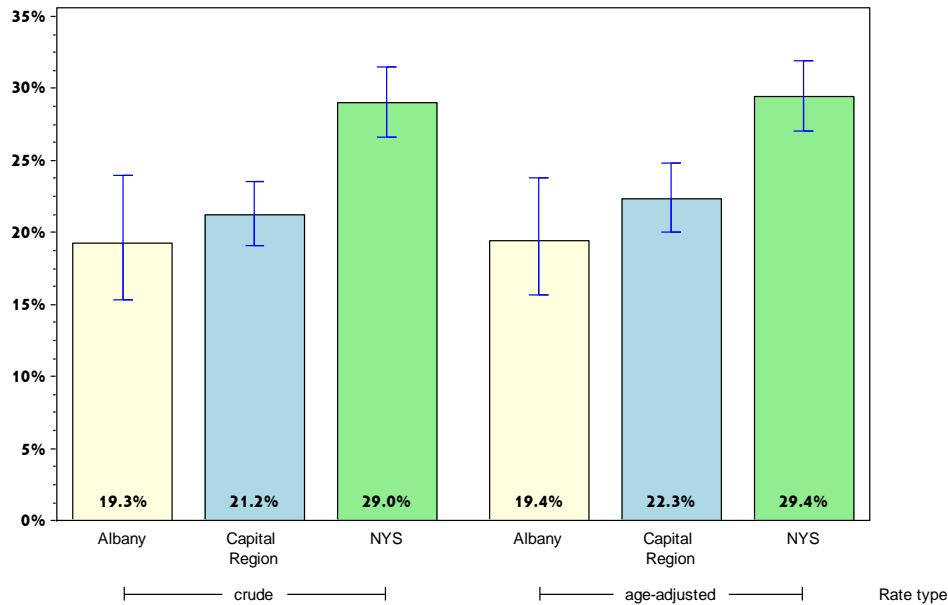
& Percent is age-adjusted to the 2000 United States Population.

[^] Highly variable rate (confidence interval with a half-width greater than 10).

Albany

Improve Health Status and Reduce Health Disparities

Percentage of adults experiencing food insecurity in the past 12 months*



Albany County

Capital Region

	Est. # of Adults	Percent	95% CI	Est. # of Adults	Percent	95% CI
Total	45,313	19.3	(15.3-24.0)	153,218	21.2	(19.1-23.6)
Age						
18-24	10,131	25.9 [^]	(13.5-43.9)	23,761	27.0	(19.2-36.7)
25-34	5,983	15.8	(10.8-22.6)	30,679	25.7	(20.3-32.0)
35-44	6,614	20.9 [^]	(13.0-31.9)	31,379	28.4	(22.6-35.1)
45-64	19,043	24.0	(16.8-33.2)	54,262	21.4	(18.0-25.1)
65+	3,468	8.2	(4.4-14.7)	12,444	9.0	(6.9-11.6)
Race						
White, NH	31,043	16.6	(13.0-20.9)	117,239	19.0	(16.9-21.2)
Black, NH	4,082	29.5 [^]	(19.8-41.4)	13,625	39.9 [^]	(28.9-52.1)
Hispanic	2,122	22.3 [^]	(13.1-35.3)	8,032	34.9 [^]	(25.9-45.1)
Other, NH	8,065	33.2 [^]	(13.9-60.5)	14,323	30.8 [^]	(17.5-48.2)
Sex						
male	22,021	19.6	(13.4-27.7)	66,917	19.2	(15.9-23.0)
female	23,292	19.0	(14.5-24.6)	86,301	23.2	(20.5-26.1)
Age-adjusted^{&}		19.4	(15.7-23.7)		22.3	(20.0-24.8)

* Worried or stressed about having enough money to buy nutritious meals.

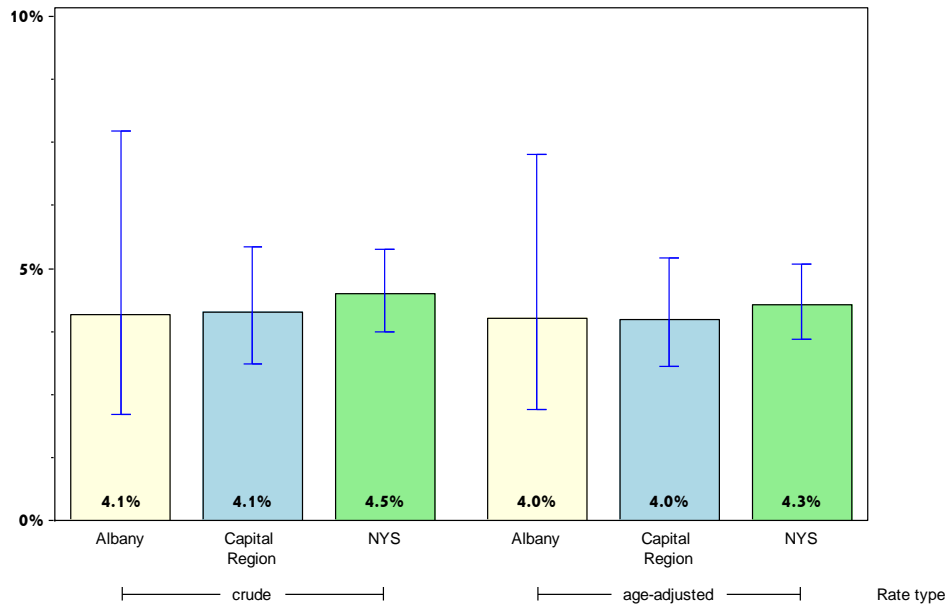
& Percent is age-adjusted to the 2000 United States Population.

[^] Highly variable rate (confidence interval with a half-width greater than 10).

Albany

Improve Health Status and Reduce Health Disparities

Percentage of adults with poor self-reported health



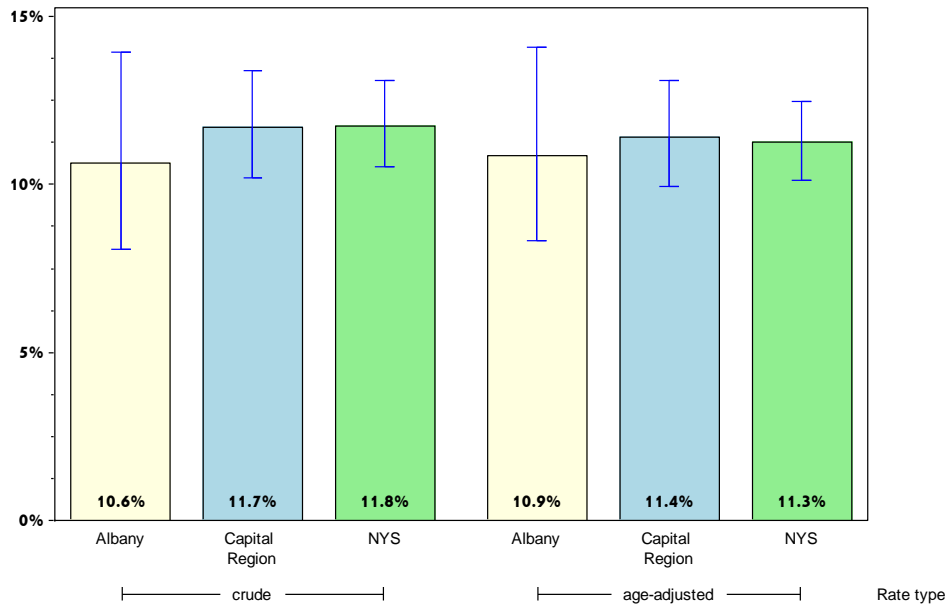
	Albany County			Capital Region		
	Est. # of Adults	Percent	95% CI	Est. # of Adults	Percent	95% CI
Total	10,037	4.1	(2.1-7.7)	31,086	4.1	(3.1-5.4)
Age		#			#	
18-24		#			#	
25-34		#			#	
35-44		#		4,002	3.5	(1.9-6.5)
45-64	6,811	8.5 [^]	(3.4-19.3)	15,190	5.8	(3.6-9.2)
65+	2,380	5.4	(2.6-10.7)	8,158	5.7	(4.1-7.8)
Race						
White, NH	6,305	3.2	(1.6-6.3)	21,951	3.4	(2.6-4.5)
Black, NH		#		3,013	8.1	(3.9-16.2)
Hispanic		#			#	
Other, NH		#		5,390	10.8 [^]	(3.7-27.7)
Sex						
male	4,178	3.6	(1.1-11.3)	12,669	3.5	(2.2-5.4)
female	5,858	4.5	(2.2-9.3)	18,417	4.7	(3.3-6.7)
Age-adjusted^{&}		4.0	(2.2-7.3)		4.0	(3.0-5.2)

& Percent is age-adjusted to the 2000 United States Population.
 # Rates with <10 in the numerator or <50 in the denominator are suppressed.
 ^ Highly variable rate (confidence interval with a half-width greater than 10).

Albany

Improve Health Status and Reduce Health Disparities

Percentage of adults who report 14 or more days of poor physical health*



Albany County

Capital Region

	Est. # of Adults	Percent	95% CI	Est. # of Adults	Percent	95% CI
Total	25,617	10.6	(8.1-13.9)	86,530	11.7	(10.2-13.4)
Age						
18-24		#		6,770	7.2	(3.3-14.8)
25-34	1,995	5.0	(2.4-9.9)	7,049	5.8	(3.7-8.9)
35-44		#		11,350	9.9	(6.8-14.3)
45-64	10,725	13.9	(8.4-22.2)	36,240	14.2	(11.4-17.4)
65+	9,456	21.8	(15.5-29.8)	24,874	17.8	(14.8-21.3)
Race						
White, NH	19,309	10.1	(7.8-12.9)	67,869	10.8	(9.5-12.2)
Black, NH	1,666	11.1 [^]	(5.4-21.3)	9,363	25.8 [^]	(14.7-41.2)
Hispanic		#		2,326	9.8	(4.9-18.7)
Other, NH		#		6,972	14.1 [^]	(6.0-29.7)
Sex						
male	10,218	8.8	(5.1-14.7)	36,753	10.2	(8.0-12.9)
female	15,399	12.4	(9.2-16.5)	49,778	13.1	(11.2-15.3)
Age-adjusted^{&}		10.9	(8.3-14.1)		11.4	(9.9-13.1)

* Out of the past 30 days.

& Percent is age-adjusted to the 2000 United States Population.

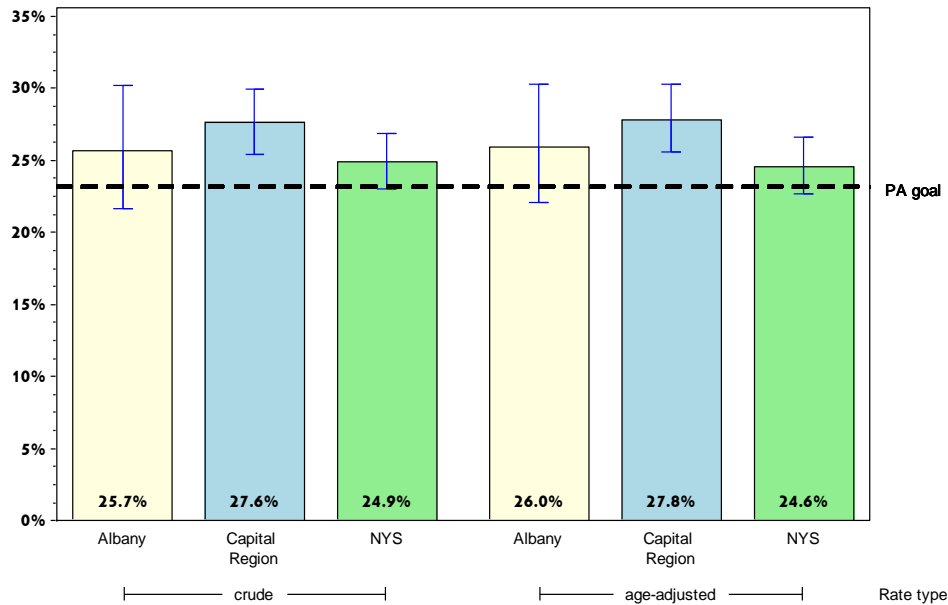
Rates with <10 in the numerator or <50 in the denominator are suppressed.

[^] Highly variable rate (confidence interval with a half-width greater than 10).

Albany

Prevent Chronic Diseases

Percentage of adults who are obese*



Albany County

Capital Region

	Est. # of Adults	Percent	95% CI	Est. # of Adults	Percent	95% CI
Total	58,938	25.7	(21.7-30.2)	196,015	27.6	(25.5-29.9)
Age						
18-24	8,582	21.0 [^]	(10.0-38.8)	12,899	14.4	(8.4-23.4)
25-34	6,304	18.4	(12.5-26.4)	27,900	24.7	(19.0-31.4)
35-44	8,345	27.6 [^]	(18.0-39.7)	36,257	33.5	(27.6-40.0)
45-64	26,026	33.7	(26.6-41.7)	84,116	33.3	(29.8-37.0)
65+	9,316	22.1	(16.3-29.2)	33,329	24.5	(21.4-27.9)
Race						
White, NH	48,856	26.6	(22.0-31.8)	167,713	27.7	(25.4-30.1)
Black, NH	5,160	37.4 [^]	(26.8-49.5)	12,819	38.0 [^]	(27.3-50.1)
Hispanic	3,295	35.3 [^]	(22.7-50.3)	6,873	28.0	(20.4-37.1)
Other, NH		#		8,610	18.6 [^]	(10.1-31.8)
Sex						
male	28,012	24.6	(19.2-30.8)	98,578	27.4	(24.2-30.7)
female	30,926	26.8	(20.9-33.6)	97,437	27.9	(24.9-31.1)
Age-adjusted^{&}		26.0	(22.1-30.3)		27.8	(25.6-30.3)

* Obesity defined as a Body Mass Index (BMI) ≥ 30 . BMI is calculated based on weight and height.

& Percent is age-adjusted to the 2000 United States Population.

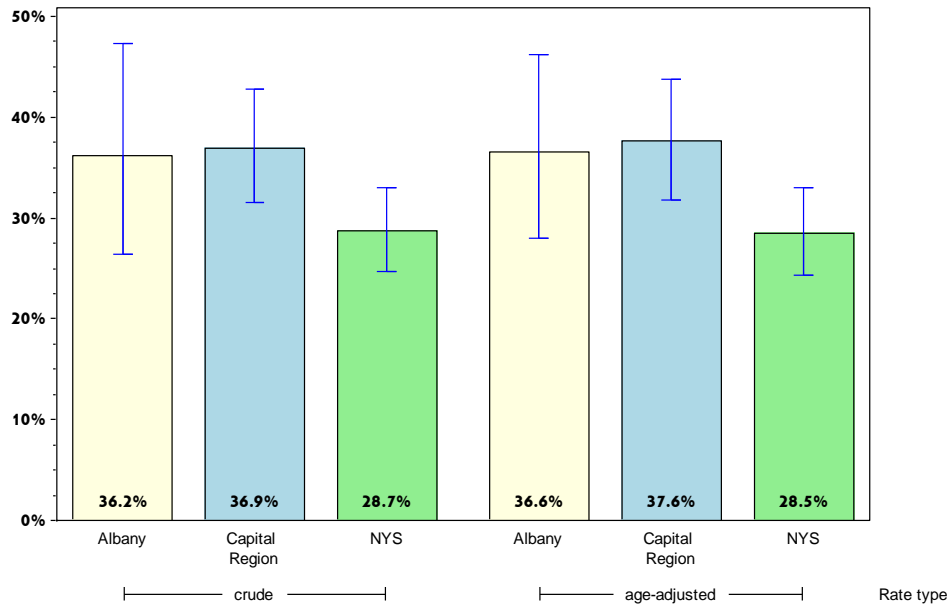
Rates with <10 in the numerator or <50 in the denominator are suppressed.

[^] Highly variable rate (confidence interval with a half-width greater than 10).

Albany

Prevent Chronic Diseases

Percentage of adults with an annual household income less than \$25,000 who are obese*



	Albany County			Capital Region		
	Est. # of Adults	Percent	95% CI	Est. # of Adults	Percent	95% CI
Total	16,815	36.2 [^]	(26.4-47.3)	54,587	36.9	(31.5-42.8)
Age						
18-24		#		3,020	17.4 [^]	(8.4-32.5)
25-34		#		10,222	39.3 [^]	(24.9-55.8)
35-44		#		7,713	41.2 [^]	(25.5-58.9)
45-64	8,916	56.5 [^]	(35.5-75.4)	23,403	48.3 [^]	(38.0-58.8)
65+		#		10,229	27.6	(21.5-34.7)
Race						
White, NH	13,350	37.6 [^]	(25.6-51.4)	41,621	36.5	(30.4-43.0)
Black, NH		#		4,238	36.2 [^]	(22.1-53.2)
Hispanic		#		2,717	28.5 [^]	(16.7-44.3)
Other, NH		#			#	
Sex						
male	7,748	35.0 [^]	(20.9-52.2)	20,376	30.7	(22.4-40.6)
female	9,067	37.3 [^]	(23.9-53.0)	34,212	42.0	(35.0-49.3)
Age-adjusted^{&}		36.6	(28.0-46.1)		37.6	(31.8-43.7)

* Obesity defined as a Body Mass Index (BMI) ≥ 30 . BMI is calculated based on weight and height.

& Percent is age-adjusted to the 2000 United States Population.

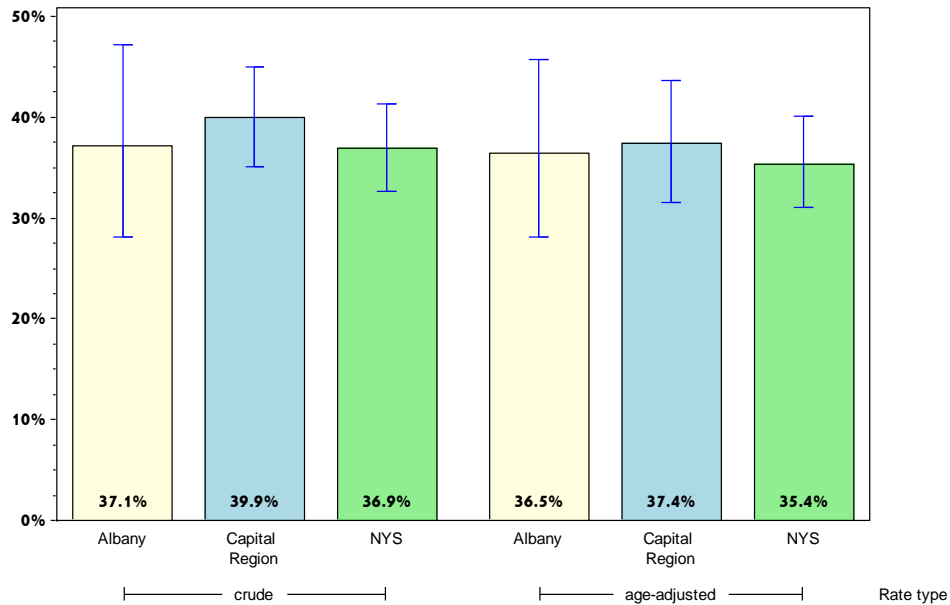
Rates with <10 in the numerator or <50 in the denominator are suppressed.

[^] Highly variable rate (confidence interval with a half-width greater than 10).

Albany

Prevent Chronic Diseases

Percentage of adults living with a disability who are obese*



	Albany County			Capital Region		
	Est. # of Adults	Percent	95% CI	Est. # of Adults	Percent	95% CI
Total	16,875	37.1 [^]	(28.1-47.2)	65,790	39.9	(35.1-45.0)
Age		#			#	
18-24		#			#	
25-34		#		7,184	38.8 [^]	(19.6-62.4)
35-44		#		7,077	41.0 [^]	(26.7-56.9)
45-64	9,260	43.9 [^]	(28.9-60.1)	33,361	46.8	(39.6-54.2)
65+	4,206	30.2 [^]	(18.9-44.6)	17,293	35.7	(29.7-42.3)
Race						
White, NH	13,856	37.1 [^]	(26.7-48.8)	55,500	38.7	(33.6-44.2)
Black, NH		#			#	
Hispanic		#			#	
Other, NH		#			#	
Sex						
male	7,504	34.9 [^]	(23.0-49.0)	30,702	37.8	(30.6-45.6)
female	9,371	39.1 [^]	(26.4-53.6)	35,087	42.0	(35.7-48.5)
Age-adjusted^{&}		36.5	(28.2-45.7)		37.4	(31.6-43.7)

* Obesity defined as a Body Mass Index (BMI) ≥ 30 . BMI is calculated based on weight and height. Limited activities (physical, mental, or emotional problems); need of special equipment (e.g. cane, wheel chair).

& Percent is age-adjusted to the 2000 United States Population.

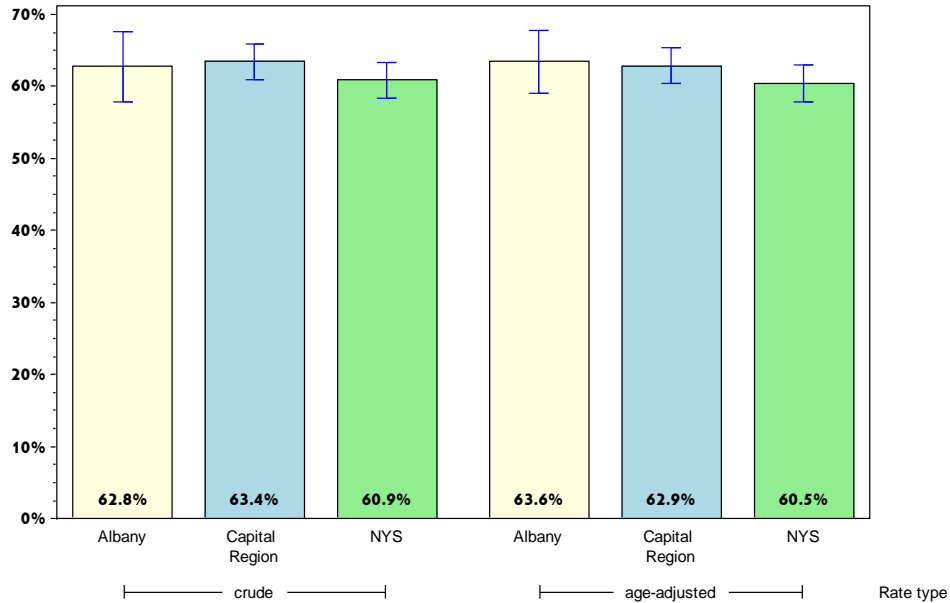
Rates with <10 in the numerator or <50 in the denominator are suppressed.

[^] Highly variable rate (confidence interval with a half-width greater than 10).

Albany

Prevent Chronic Diseases

Percentage of adults overweight or obese*



	Albany County			Capital Region		
	Est. # of Adults	Percent	95% CI	Est. # of Adults	Percent	95% CI
Total	144,178	62.8	(57.8-67.7)	449,862	63.4	(60.9-65.8)
Age						
18-24	19,474	47.6 [^]	(31.1-64.5)	36,543	40.7 [^]	(31.2-51.1)
25-34	17,689	51.7	(42.0-61.2)	65,156	57.7	(51.1-64.0)
35-44	22,161	73.2 [^]	(61.5-82.4)	71,436	66.1	(59.8-71.8)
45-64	54,707	70.9	(63.8-77.1)	182,293	72.2	(68.8-75.3)
65+	26,630	63.1	(55.2-70.3)	88,147	64.8	(60.7-68.6)
Race						
White, NH	114,138	62.2	(56.8-67.4)	381,643	63.1	(60.5-65.6)
Black, NH	9,722	70.5 [^]	(58.5-80.3)	25,401	75.3	(65.7-83.0)
Hispanic	7,190	77.1 [^]	(56.1-89.8)	17,407	70.9 [^]	(60.2-79.7)
Other, NH	13,129	57.4 [^]	(33.4-78.3)	25,411	55.0 [^]	(40.4-68.8)
Sex						
male	76,715	67.3	(59.0-74.7)	249,199	69.2	(65.4-72.7)
female	67,463	58.4	(51.9-64.7)	200,663	57.5	(54.1-60.8)
Age-adjusted^{&}		63.6	(59.1-67.8)		62.9	(60.4-65.3)

* Defined as a Body Mass Index (BMI) >=25. BMI is calculated based on weight and height.

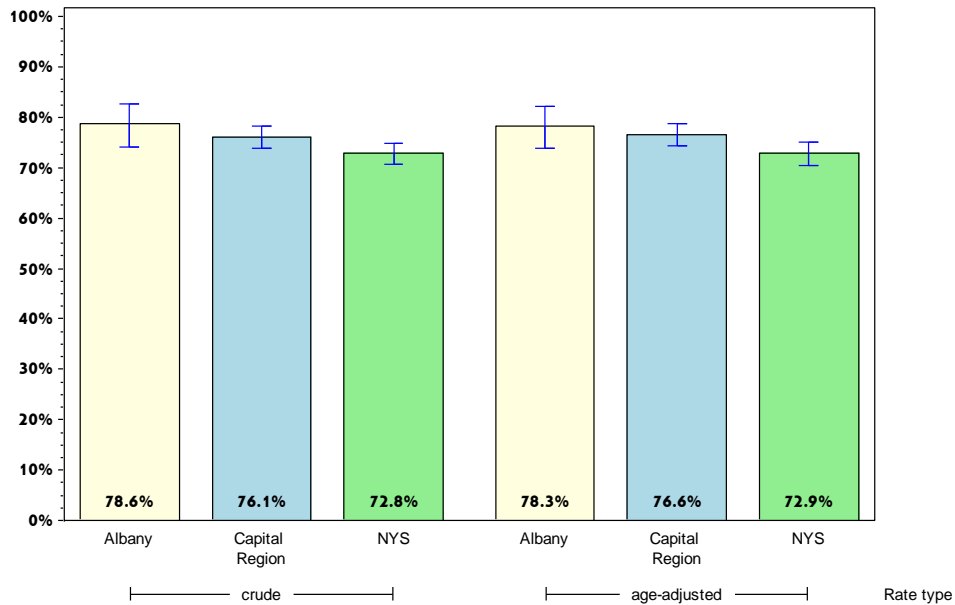
& Percent is age-adjusted to the 2000 United States Population.

[^] Highly variable rate (confidence interval with a half-width greater than 10).

Albany

Prevent Chronic Diseases

Percentage of adults who participated in leisure time physical activity in the past 30 days*



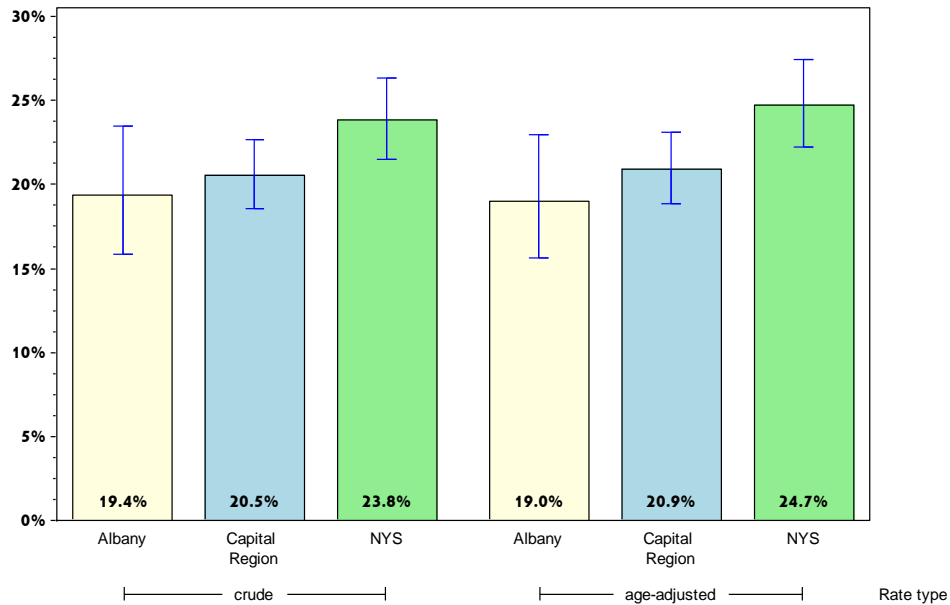
	Albany County			Capital Region		
	Est. # of Adults	Percent	95% CI	Est. # of Adults	Percent	95% CI
Total	186,358	78.6	(74.1-82.6)	556,553	76.1	(73.9-78.2)
Age						
18-24	34,258	84.7 [^]	(59.0-95.5)	75,199	82.7 [^]	(71.5-90.1)
25-34	31,259	81.2	(72.6-87.6)	94,246	78.5	(71.7-84.0)
35-44	24,425	77.6 [^]	(66.1-86.0)	88,206	79.6	(73.8-84.3)
45-64	62,851	79.6	(73.0-84.9)	196,559	76.2	(72.8-79.3)
65+	29,350	68.9	(60.6-76.2)	93,338	66.8	(62.9-70.4)
Race						
White, NH	147,646	77.9	(72.6-82.5)	479,185	76.6	(74.2-78.8)
Black, NH	10,531	76.5 [^]	(65.8-84.6)	24,322	71.4 [^]	(59.7-80.9)
Hispanic	7,177	76.1 [^]	(55.0-89.2)	17,336	72.5 [^]	(60.3-82.1)
Other, NH	21,003	86.4 [^]	(73.5-93.6)	35,711	75.0 [^]	(63.2-84.0)
Sex						
male	90,092	78.5	(70.5-84.9)	272,326	76.8	(73.1-80.1)
female	96,266	78.7	(73.7-83.0)	284,227	75.6	(72.8-78.1)
Age-adjusted^{&}		78.3	(73.9-82.1)		76.6	(74.2-78.8)

* Any physical activities or exercises such as running or walking
 & Percent is age-adjusted to the 2000 United States Population.
[^] Highly variable rate (confidence interval with a half-width greater than 10).

Albany

Prevent Chronic Diseases

Percentage of adults who consume one or more sugary drinks daily*



Albany County

Capital Region

	Est. # of Adults	Percent	95% CI	Est. # of Adults	Percent	95% CI
Total	44,866	19.4	(15.8-23.5)	146,058	20.5	(18.5-22.7)
Age						
18-24	14,184	36.5 [^]	(22.1-53.8)	28,523	32.9	(24.4-42.8)
25-34	8,843	23.9 [^]	(15.9-34.2)	36,519	31.0	(24.6-38.1)
35-44	5,487	17.5 [^]	(10.1-28.5)	18,018	16.3	(12.6-20.9)
45-64	9,983	12.8	(9.2-17.5)	42,321	16.9	(14.4-19.8)
65+	5,560	13.4	(9.1-19.2)	18,870	13.9	(11.5-16.7)
Race						
White, NH	36,161	19.6	(15.5-24.4)	121,145	19.9	(17.8-22.3)
Black, NH	3,450	25.4 [^]	(16.3-37.3)	10,242	30.3 [^]	(20.6-42.2)
Hispanic	2,865	31.0 [^]	(18.6-46.8)	8,727	38.5 [^]	(29.0-49.0)
Other, NH	2,390	9.9 [^]	(4.4-20.5)	5,944	12.5	(7.4-20.3)
Sex						
male	27,071	24.3	(19.2-30.4)	84,851	24.6	(21.5-28.0)
female	17,794	14.8	(10.1-21.0)	61,207	16.7	(14.2-19.5)
Age-adjusted^{&}		19.0	(15.6-22.9)		20.9	(18.8-23.1)

* Sugary drinks include regular soda, and sugar-sweetened drinks.

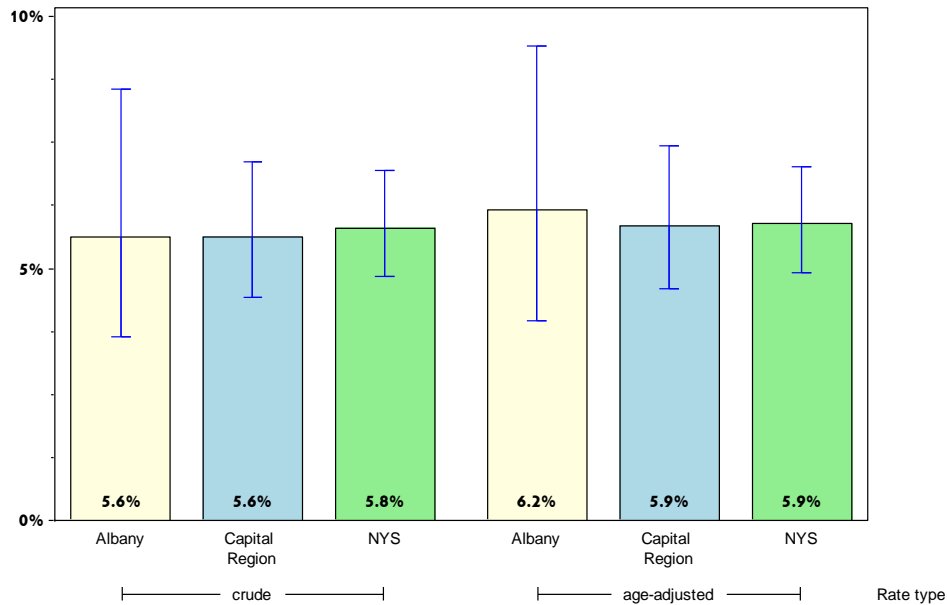
& Percent is age-adjusted to the 2000 United States Population.

[^] Highly variable rate (confidence interval with a half-width greater than 10).

Albany

Prevent Chronic Diseases

Percentage of adults who consume fast-food three or more times per week



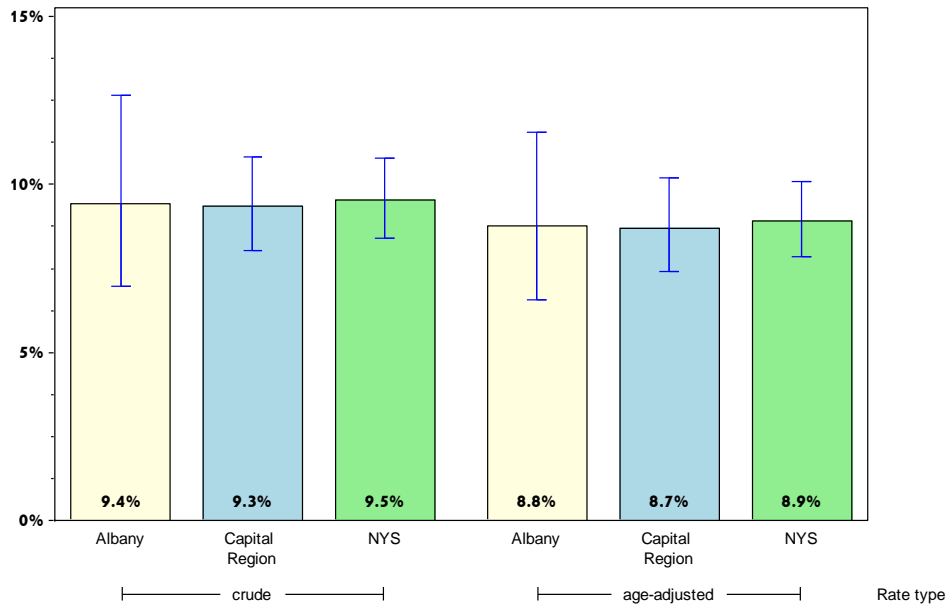
	Albany County			Capital Region		
	Est. # of Adults	Percent	95% CI	Est. # of Adults	Percent	95% CI
Total	12,979	5.6	(3.7-8.6)	39,790	5.6	(4.4-7.1)
Age		#				
18-24		#		8,329	9.7	(5.1-17.5)
25-34	5,166	13.9 [^]	(5.9-29.3)	11,200	9.6	(5.7-15.5)
35-44	2,447	7.9	(3.3-17.8)	5,776	5.3	(3.2-8.5)
45-64	3,564	4.6	(2.8-7.5)	10,867	4.4	(2.9-6.5)
65+		#		3,146	2.3	(1.5-3.6)
Race						
White, NH	11,263	6.1	(3.8-9.8)	31,483	5.2	(4.1-6.6)
Black, NH		#		5,232	15.8 [^]	(6.0-35.5)
Hispanic		#		2,006	9.0	(5.0-15.8)
Other, NH		#			#	
Sex						
male	10,249	9.2	(5.5-15.0)	31,282	9.1	(6.9-12.0)
female	2,729	2.3	(1.2-4.3)	8,509	2.3	(1.7-3.3)
Age-adjusted^{&}		6.2	(4.0-9.4)		5.9	(4.6-7.4)

& Percent is age-adjusted to the 2000 United States Population.
 # Rates with <10 in the numerator or <50 in the denominator are suppressed.
 ^ Highly variable rate (confidence interval with a half-width greater than 10).

Albany

Prevent Chronic Diseases

Percentage of adults with physician diagnosed diabetes*



	Albany County			Capital Region		
	Est. # of Adults	Percent	95% CI	Est. # of Adults	Percent	95% CI
Total	23,281	9.4	(7.0-12.7)	70,730	9.3	(8.0-10.8)
Age		#			#	
18-24		#			#	
25-34		#			#	
35-44		#		8,295	7.2	(3.8-13.1)
45-64	12,008	14.9	(9.1-23.6)	27,350	10.4	(8.0-13.3)
65+	9,493	21.3	(15.9-28.0)	32,001	22.1	(18.9-25.7)
Race						
White, NH	15,712	8.0	(5.9-10.8)	56,938	8.8	(7.6-10.2)
Black, NH	2,666	17.3 [^]	(10.2-27.9)	5,143	13.9	(8.7-21.3)
Hispanic	1,434	14.1 [^]	(7.5-24.9)	2,015	7.9	(4.6-13.0)
Other, NH		#		6,634	13.3 [^]	(5.6-28.3)
Sex						
male	13,189	11.2	(7.0-17.5)	40,032	10.9	(8.7-13.5)
female	10,092	7.8	(5.6-10.8)	30,698	7.9	(6.5-9.4)
Age-adjusted^{&}		8.8	(6.6-11.6)		8.7	(7.4-10.2)

* As diagnosed by a health professional.

& Percent is age-adjusted to the 2000 United States Population.

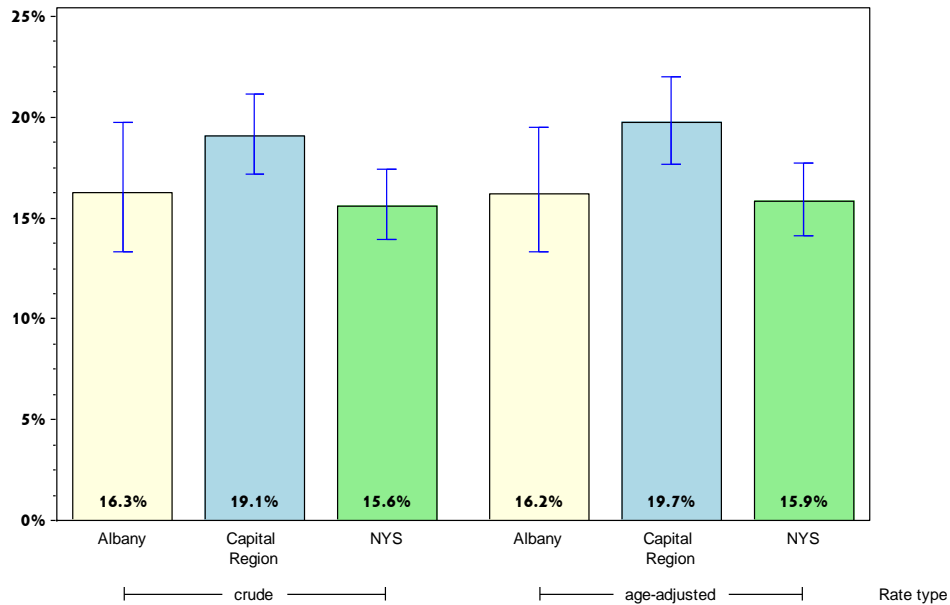
Rates with <10 in the numerator or <50 in the denominator are suppressed.

[^] Highly variable rate (confidence interval with a half-width greater than 10).

Albany

Prevent Chronic Diseases

Percentage of adults who are current smokers



	Albany County			Capital Region		
	Est. # of Adults	Percent	95% CI	Est. # of Adults	Percent	95% CI
Total	39,049	16.3	(13.3-19.7)	141,063	19.1	(17.2-21.2)
Age						
18-24	5,576	13.6	(7.6-23.3)	18,990	20.7	(14.6-28.6)
25-34	8,917	22.7	(15.4-32.1)	31,739	26.0	(20.4-32.5)
35-44	3,556	11.4	(6.5-19.1)	24,107	21.5	(16.4-27.8)
45-64	17,039	21.5	(15.7-28.6)	55,144	21.2	(18.3-24.4)
65+	3,452	8.0	(4.1-14.9)	10,388	7.4	(5.4-10.0)
Race						
White, NH	30,937	16.2	(12.8-20.3)	117,876	18.7	(16.7-20.9)
Black, NH	3,393	23.8 [^]	(15.6-34.4)	7,493	21.5	(14.8-30.2)
Hispanic	3,028	30.4 [^]	(18.4-45.9)	8,467	34.6 [^]	(24.9-45.8)
Other, NH	1,690	6.8	(3.0-14.5)	7,227	14.7 [^]	(8.0-25.4)
Sex						
male	22,586	19.5	(14.8-25.3)	75,766	21.1	(18.2-24.4)
female	16,463	13.3	(9.9-17.6)	65,298	17.2	(14.8-19.8)
Age-adjusted^{&}		16.2	(13.3-19.5)		19.7	(17.7-22.0)

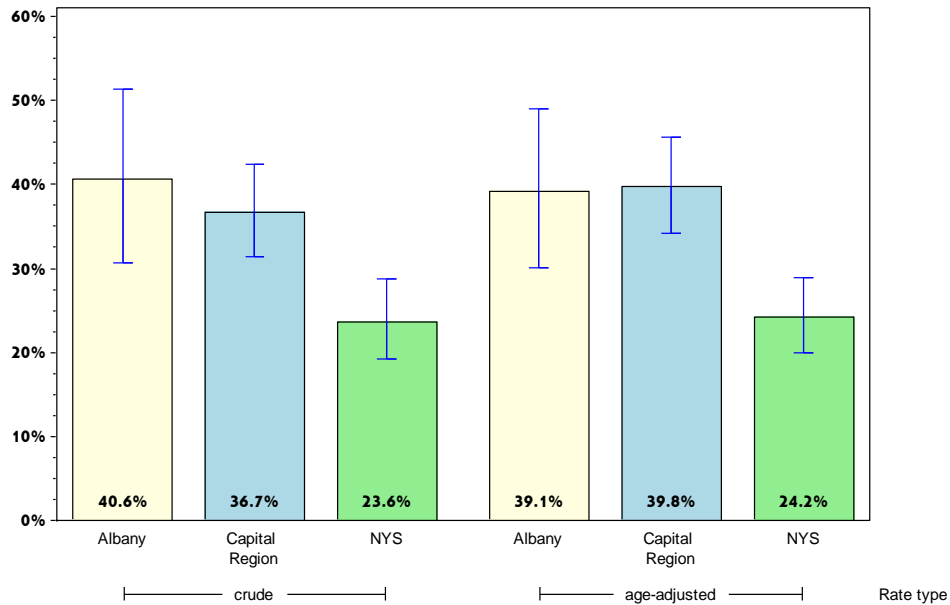
& Percent is age-adjusted to the 2000 United States Population.

[^] Highly variable rate (confidence interval with a half-width greater than 10).

Albany

Prevent Chronic Diseases

Percentage of adults with annual household income less than \$25,000 who are current smokers



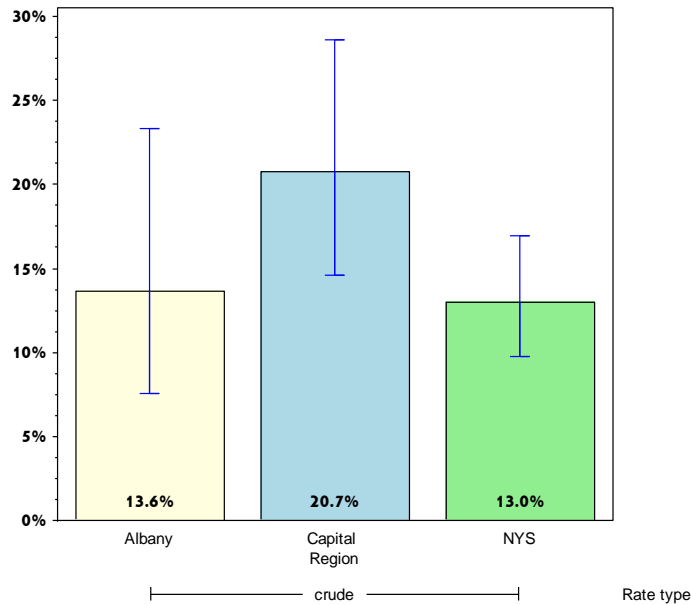
	Albany County			Capital Region		
	Est. # of Adults	Percent	95% CI	Est. # of Adults	Percent	95% CI
Total	19,683	40.6 [^]	(30.7-51.3)	56,135	36.7	(31.4-42.3)
Age		#				
18-24		#		5,940	34.3 [^]	(21.7-49.4)
25-34		#		14,236	52.5 [^]	(38.9-65.8)
35-44		#		10,218	51.2 [^]	(35.3-66.7)
45-64	8,642	50.1 [^]	(30.4-69.9)	20,764	41.1 [^]	(31.8-51.1)
65+		#		4,979	13.3	(8.1-21.0)
Race						
White, NH	15,480	41.5 [^]	(29.5-54.5)	43,833	37.2	(31.3-43.6)
Black, NH		#		3,373	25.7 [^]	(14.8-40.8)
Hispanic		#		4,581	47.6 [^]	(31.2-64.5)
Other, NH		#			#	
Sex						
male	11,859	54.9 [^]	(40.1-68.9)	30,330	46.8	(38.0-55.7)
female	7,825	29.1 [^]	(18.7-42.2)	25,806	29.3	(23.5-35.9)
Age-adjusted^{&}		39.1	(30.0-49.0)		39.8	(34.2-45.6)

& Percent is age-adjusted to the 2000 United States Population.
 # Rates with <10 in the numerator or <50 in the denominator are suppressed.
 ^ Highly variable rate (confidence interval with a half-width greater than 10).

Albany

Prevent Chronic Diseases

Percentage of adults aged 18-24 years who are current smokers



	Albany County			Capital Region		
	Est. # of Adults	Percent	95% CI	Est. # of Adults	Percent	95% CI
Total	5,576	13.6	(7.6-23.3)	18,990	20.7	(14.6-28.6)
Age⁺						
18-24						
25-34						
35-44						
45-64						
65+						
Race						
White, NH	4,579	14.1 [^]	(7.2-26.0)	16,226	22.0	(14.9-31.2)
Black, NH		#			#	
Hispanic		#			#	
Other, NH		#			#	
Sex						
male		#		9,187	17.5	(10.9-27.0)
female		#		9,803	25.0 [^]	(14.9-38.8)
Age-adjusted^{+,&}						

& Percent is age-adjusted to the 2000 United States Population.

+ Age-adjusted and age specific percent not generated for health indicators with age range limits.

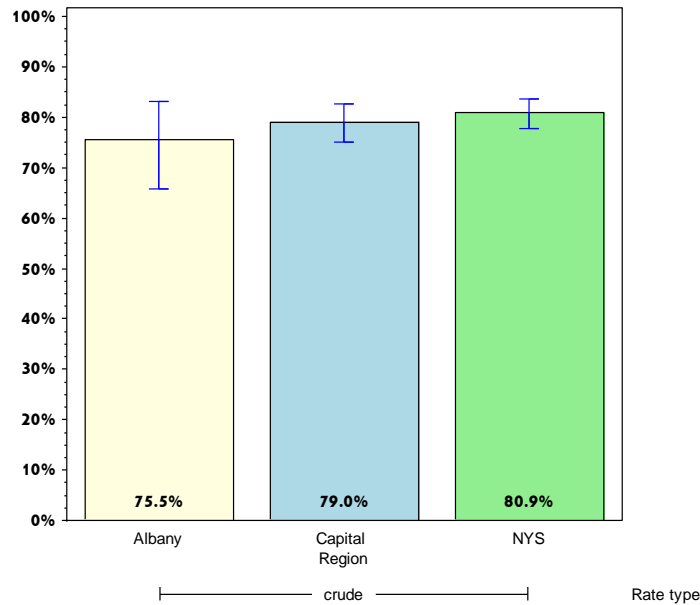
Rates with <10 in the numerator or <50 in the denominator are suppressed.

[^] Highly variable rate (confidence interval with a half-width greater than 10).

Albany

Prevent Chronic Diseases

Percentage of women aged 50-74 years receiving breast cancer screening based on recent guidelines*



Albany County

Capital Region

	Est. # of Adults	Percent	95% CI	Est. # of Adults	Percent	95% CI
Total	34,480	75.5	(65.8-83.2)	110,971	79.0	(75.0-82.5)
Age⁺						
18-24						
25-34						
35-44						
45-64						
65+						
Race						
White, NH	31,177	76.2 [^]	(65.6-84.4)	100,353	78.7	(74.5-82.4)
Black, NH		#			#	
Hispanic		#			#	
Other, NH		#			#	
Sex						
male		#			#	
female	34,480	75.5	(65.8-83.2)	110,971	79.0	(75.0-82.5)
Age-adjusted^{+,&}						

* Mammogram within past 2 years.

& Percent is age-adjusted to the 2000 United States Population.

+ Age-adjusted and age specific percent not generated for health indicators with age range limits.

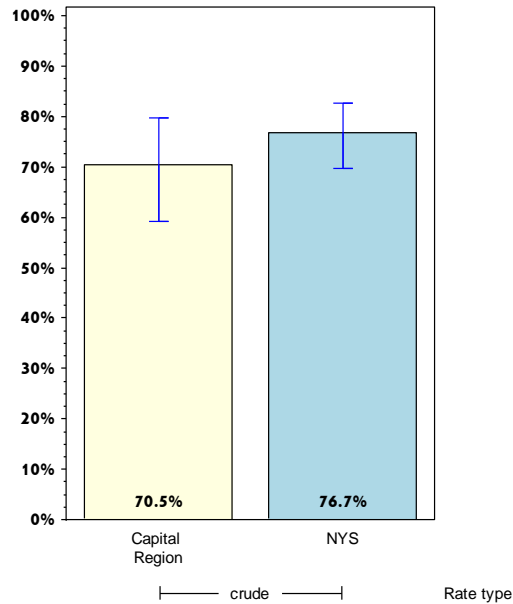
Rates with <10 in the numerator or <50 in the denominator are suppressed.

[^] Highly variable rate (confidence interval with a half-width greater than 10).

Albany

Prevent Chronic Diseases

Percentage of women aged 50-74 years with annual household income of less than \$25,000 receiving breast cancer screening based on recent guidelines*



	Albany County			Capital Region		
	Est. # of Adults	Percent	95% CI	Est. # of Adults	Percent	95% CI
Total		#		21,656	70.5 [^]	(59.2-79.7)
Age⁺						
18-24						
25-34						
35-44						
45-64						
65+						
Race						
White, NH		#		16,285	66.3 [^]	(53.7-76.9)
Black, NH		#			#	
Hispanic		#			#	
Other, NH		#			#	
Sex						
male		#			#	
female		#		21,656	70.5 [^]	(59.2-79.7)
Age-adjusted^{+,&}						

* Mammogram within past 2 years.

& Percent is age-adjusted to the 2000 United States Population.

+ Age-adjusted and age specific percent not generated for health indicators with age range limits.

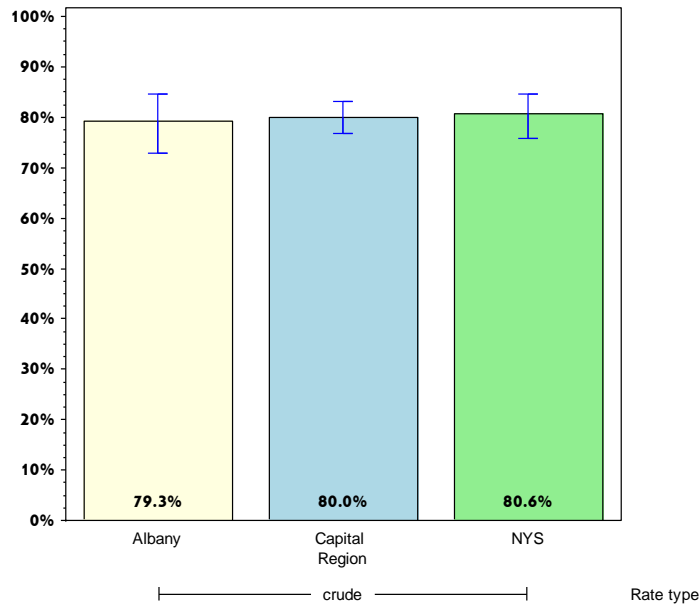
Rates with <10 in the numerator or <50 in the denominator are suppressed.

[^] Highly variable rate (confidence interval with a half-width greater than 10).

Albany

Prevent Chronic Diseases

Percentage of women aged 21-65 years receiving cervical cancer screening based on recent guidelines*



Albany County

Capital Region

	Est. # of Adults	Percent	95% CI	Est. # of Adults	Percent	95% CI
Total	73,716	79.3	(72.9-84.5)	218,954	80.0	(76.6-83.0)
Age⁺						
18-24						
25-34						
35-44						
45-64						
65+						
Race						
White, NH	56,983	79.1	(71.8-84.9)	189,224	81.8	(78.5-84.8)
Black, NH		#		10,116	74.0 [^]	(54.2-87.3)
Hispanic		#		6,537	74.3 [^]	(52.7-88.2)
Other, NH		#		13,077	65.6 [^]	(44.1-82.1)
Sex						
male		#			#	
female	73,716	79.3	(72.9-84.5)	218,954	80.0	(76.6-83.0)
Age-adjusted^{+,&}						

* Pap test within past 3 years.

& Percent is age-adjusted to the 2000 United States Population.

+ Age-adjusted and age specific percent not generated for health indicators with age range limits.

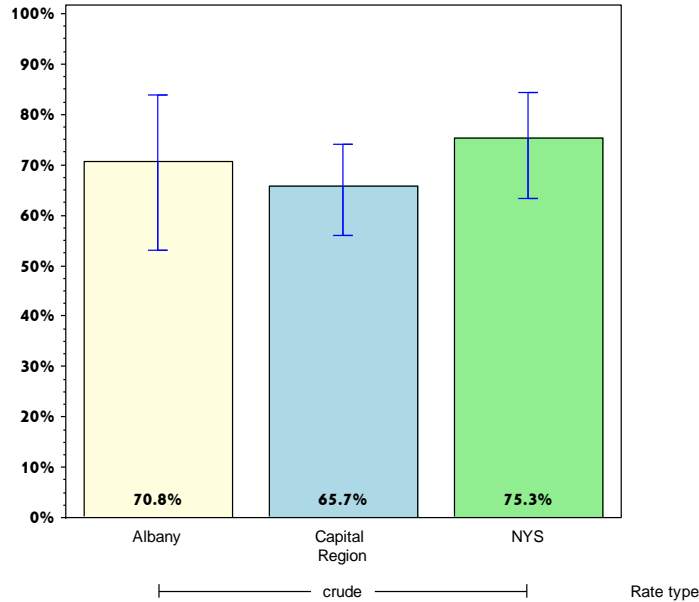
Rates with <10 in the numerator or <50 in the denominator are suppressed.

[^] Highly variable rate (confidence interval with a half-width greater than 10).

Albany

Prevent Chronic Diseases

Percentage of women aged 21-65 years with annual household income of less than \$25,000 receiving cervical cancer screening based on recent guidelines*



	Albany County			Capital Region		
	Est. # of Adults	Percent	95% CI	Est. # of Adults	Percent	95% CI
Total	14,319	70.8 [^]	(53.0-83.8)	38,085	65.7	(56.0-74.2)
Age⁺						
18-24						
25-34						
35-44						
45-64						
65+						
Race						
White, NH	11,045	69.6 [^]	(49.3-84.4)	29,878	69.6	(59.7-77.9)
Black, NH		#			#	
Hispanic		#			#	
Other, NH		#			#	
Sex						
male		#			#	
female	14,319	70.8 [^]	(53.0-83.8)	38,085	65.7	(56.0-74.2)
Age-adjusted^{+,&}						

* Pap test within past 3 years.

& Percent is age-adjusted to the 2000 United States Population.

+ Age-adjusted and age specific percent not generated for health indicators with age range limits.

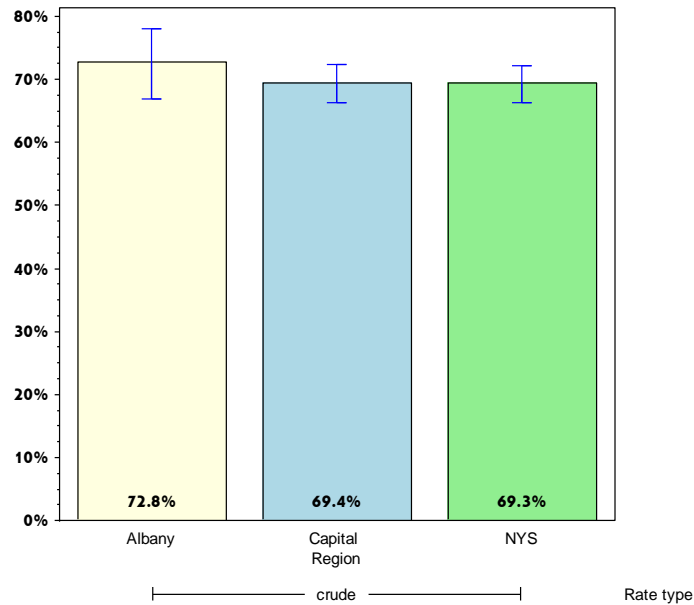
Rates with <10 in the numerator or <50 in the denominator are suppressed.

[^] Highly variable rate (confidence interval with a half-width greater than 10).

Albany

Prevent Chronic Diseases

Percentage of adults aged 50-75 years receiving colorectal cancer screening based on recent guidelines*



Albany County

Capital Region

	Est. # of Adults	Percent	95% CI	Est. # of Adults	Percent	95% CI
Total	58,659	72.8	(66.8-78.1)	187,405	69.4	(66.3-72.4)
Age⁺						
18-24						
25-34						
35-44						
45-64						
65+						
Race						
White, NH	50,483	73.0	(66.6-78.6)	167,485	70.0	(66.9-73.0)
Black, NH		#		5,819	57.4 [^]	(37.3-75.2)
Hispanic		#			#	
Other, NH		#		10,135	69.0 [^]	(45.3-85.6)
Sex						
male	26,502	76.9	(68.4-83.7)	86,398	67.2	(62.2-71.9)
female	32,157	69.7	(61.2-77.1)	101,007	71.5	(67.5-75.1)
Age-adjusted^{+,&}						

* Blood stool test within 1 year, or sigmoidoscopy within 5 years with blood stool test within 3 years, or colonoscopy within 10 years.

& Percent is age-adjusted to the 2000 United States Population.

+ Age-adjusted and age specific percent not generated for health indicators with age range limits.

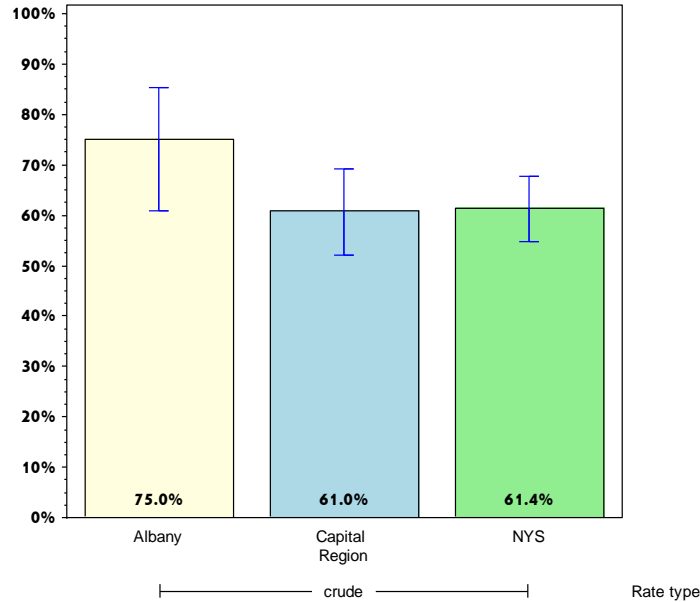
Rates with <10 in the numerator or <50 in the denominator are suppressed.

[^] Highly variable rate (confidence interval with a half-width greater than 10).

Albany

Prevent Chronic Diseases

Percentage of adults aged 50-75 years with annual household income less than \$25,000 receiving colorectal cancer screening based on recent guidelines*



Albany County

Capital Region

	Est. # of Adults	Percent	95% CI	Est. # of Adults	Percent	95% CI
Total	12,168	75.0 [^]	(60.8-85.4)	33,685	61.0	(52.1-69.2)
Age⁺						
18-24						
25-34						
35-44						
45-64						
65+						
Race						
White, NH		#		26,261	62.3	(53.5-70.3)
Black, NH		#			#	
Hispanic		#			#	
Other, NH		#			#	
Sex						
male		#		11,885	49.3 [^]	(35.9-62.9)
female		#		21,800	70.0	(60.2-78.3)
Age-adjusted^{+,&}						

* Blood stool test within 1 year, or sigmoidoscopy within 5 years with blood stool test within 3 years, or colonoscopy within 10 years.

& Percent is age-adjusted to the 2000 United States Population.

+ Age-adjusted and age specific percent not generated for health indicators with age range limits.

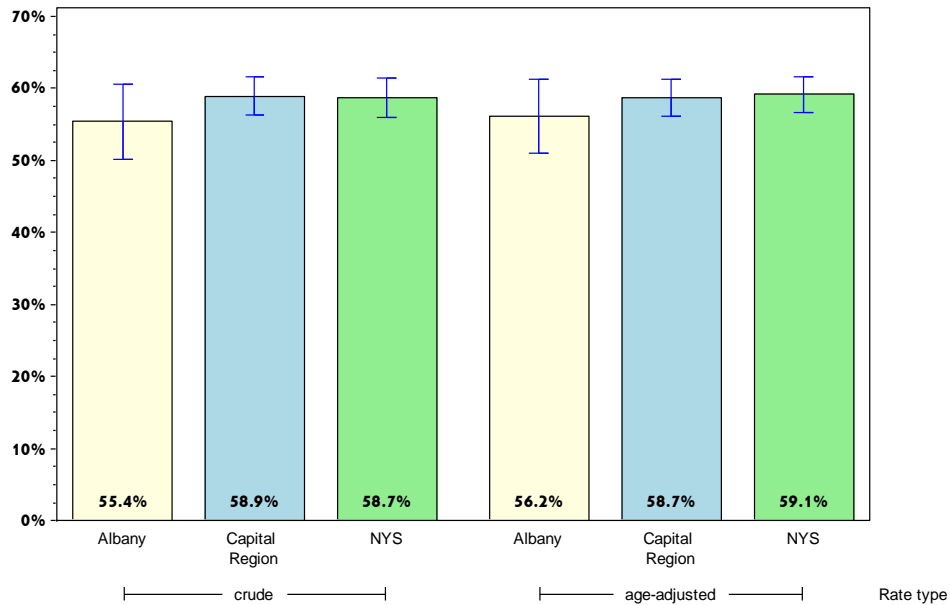
Rates with <10 in the numerator or <50 in the denominator are suppressed.

[^] Highly variable rate (confidence interval with a half-width greater than 10).

Albany

Prevent Chronic Diseases

Percentage of adults who had a test for high blood sugar or diabetes within the past three years



Albany County

Capital Region

	Est. # of Adults	Percent	95% CI	Est. # of Adults	Percent	95% CI
Total	119,635	55.4	(50.1-60.6)	387,390	58.9	(56.3-61.5)
Age						
18-24	15,575	37.5 [^]	(22.2-55.8)	27,483	30.4 [^]	(21.5-41.0)
25-34	16,982	43.0 [^]	(33.0-53.7)	62,651	51.6	(45.0-58.1)
35-44	17,722	57.4 [^]	(42.1-71.4)	60,615	58.6	(51.9-65.0)
45-64	43,098	66.5	(59.0-73.3)	154,280	69.2	(65.5-72.7)
65+	22,096	64.6	(55.5-72.8)	74,984	69.3	(65.0-73.3)
Race						
White, NH	100,966	58.2	(52.6-63.7)	336,654	60.0	(57.3-62.7)
Black, NH	7,553	61.4 [^]	(48.0-73.2)	18,952	60.5 [^]	(46.6-73.0)
Hispanic	4,576	54.2 [^]	(37.4-70.1)	11,998	53.0 [^]	(41.9-63.8)
Other, NH	6,540	30.0 [^]	(13.8-53.4)	19,787	46.7 [^]	(32.5-61.4)
Sex						
male	57,304	56.9	(48.9-64.6)	181,844	57.7	(53.8-61.6)
female	62,332	54.1	(47.1-61.0)	205,546	60.0	(56.5-63.5)
Age-adjusted^{&}		56.2	(51.0-61.3)		58.7	(56.1-61.3)

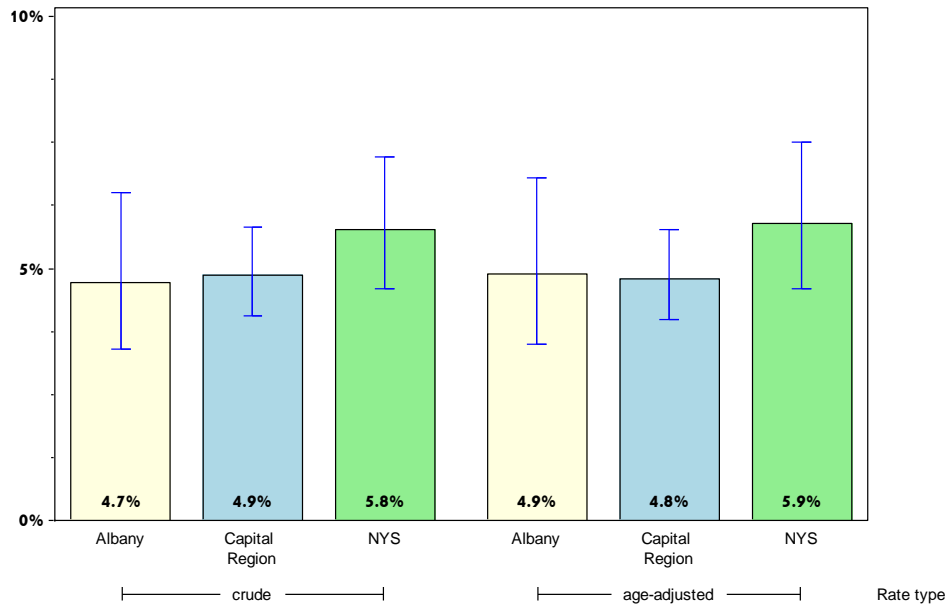
& Percent is age-adjusted to the 2000 United States Population.

[^] Highly variable rate (confidence interval with a half-width greater than 10).

Albany

Prevent Chronic Diseases

Percentage of adults with physician-diagnosed prediabetes



	Albany County			Capital Region		
	Est. # of Adults	Percent	95% CI	Est. # of Adults	Percent	95% CI
Total	10,472	4.7	(3.4-6.5)	33,014	4.9	(4.0-5.8)
Age		#			#	
18-24		#			#	
25-34		#		3,641	2.9	(1.7-5.1)
35-44		#		3,857	3.6	(2.0-6.4)
45-64	4,181	6.2	(3.9-9.6)	13,796	5.9	(4.5-7.8)
65+	2,821	8.1	(4.2-15.2)	10,296	9.3	(6.9-12.4)
Race						
White, NH	8,194	4.6	(3.2-6.6)	26,899	4.6	(3.8-5.6)
Black, NH		#		2,420	7.6	(3.6-15.2)
Hispanic		#			#	
Other, NH		#			#	
Sex						
male	4,894	4.7	(3.0-7.4)	16,246	5.0	(3.9-6.5)
female	5,578	4.7	(3.0-7.4)	16,768	4.7	(3.7-6.0)
Age-adjusted^{&}		4.9	(3.5-6.8)		4.8	(4.0-5.8)

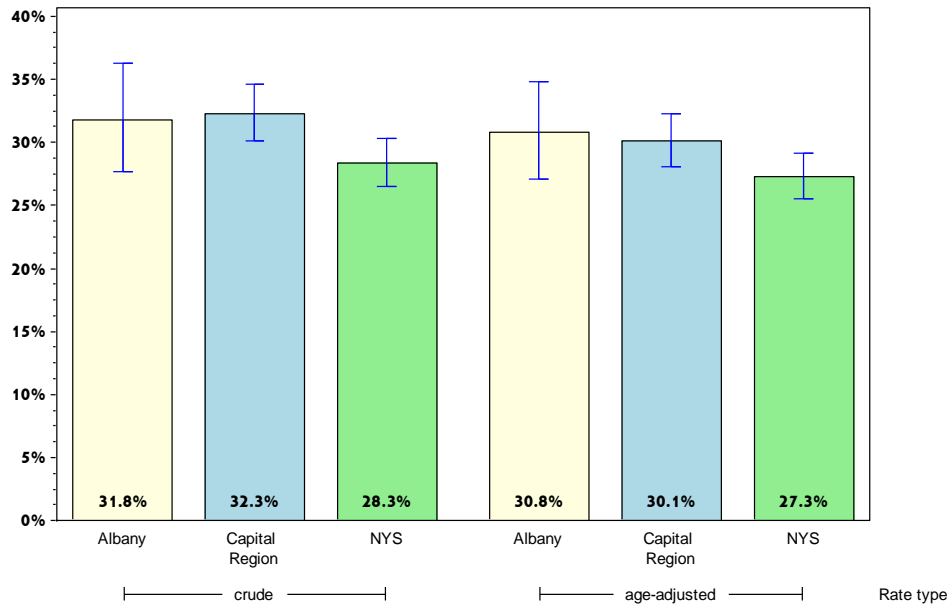
& Percent is age-adjusted to the 2000 United States Population.

Rates with <10 in the numerator or <50 in the denominator are suppressed.

Albany

Prevent Chronic Diseases

Percentage of adults with physician-diagnosed high blood pressure



	Albany County			Capital Region		
	Est. # of Adults	Percent	95% CI	Est. # of Adults	Percent	95% CI
Total	77,952	31.8	(27.6-36.3)	243,986	32.3	(30.1-34.6)
Age		#				
18-24				4,516	4.8	(1.7-12.9)
25-34	5,336	13.2	(8.1-20.9)	17,383	13.8	(9.4-19.9)
35-44	8,334	25.8 [^]	(16.2-38.5)	26,620	23.1	(18.0-29.1)
45-64	32,460	40.8	(33.2-48.8)	100,694	38.3	(34.7-42.1)
65+	26,906	60.7	(52.9-68.1)	88,328	61.4	(57.5-65.1)
Race						
White, NH	62,112	31.9	(27.6-36.6)	209,708	32.6	(30.4-35.0)
Black, NH	6,922	45.0 [^]	(34.1-56.4)	16,696	44.7 [^]	(33.4-56.6)
Hispanic	2,199	21.5 [^]	(12.8-33.9)	5,472	21.3	(14.7-30.0)
Other, NH	6,718	26.7 [^]	(10.4-53.3)	12,111	24.3 [^]	(13.7-39.3)
Sex						
male	39,872	34.2	(27.9-41.1)	133,745	36.5	(33.0-40.1)
female	38,080	29.6	(24.3-35.6)	110,242	28.4	(25.7-31.2)
Age-adjusted^{&}		30.8	(27.1-34.8)		30.1	(28.0-32.3)

& Percent is age-adjusted to the 2000 United States Population.

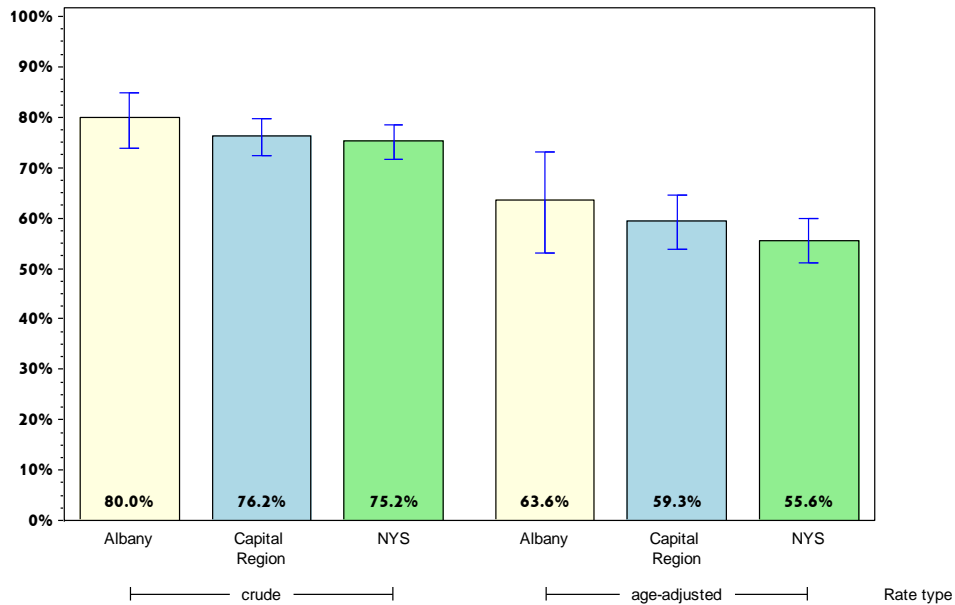
Rates with <10 in the numerator or <50 in the denominator are suppressed.

[^] Highly variable rate (confidence interval with a half-width greater than 10).

Albany

Prevent Chronic Diseases

Percentage of adults with diagnosed high blood pressure taking high blood pressure medication



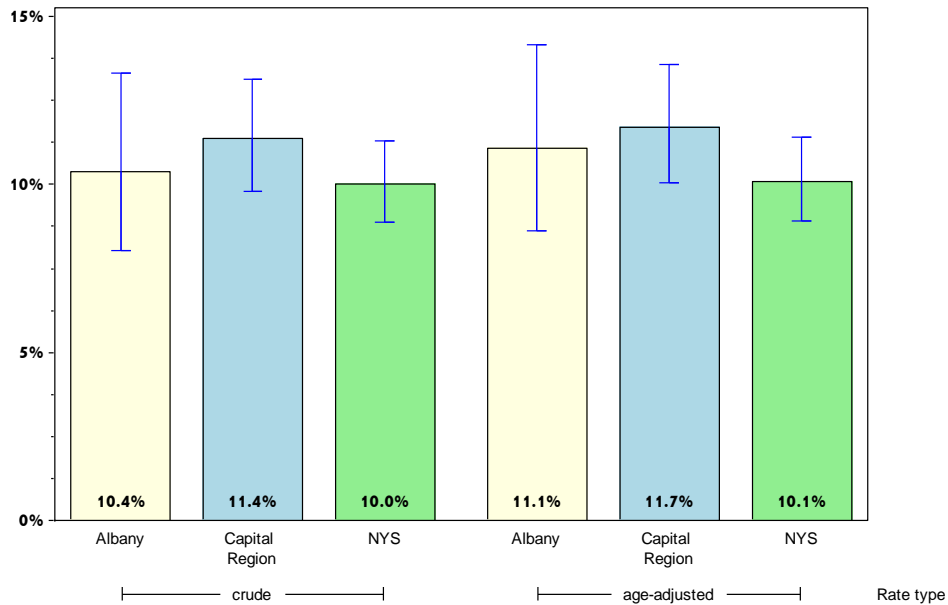
	Albany County			Capital Region		
	Est. # of Adults	Percent	95% CI	Est. # of Adults	Percent	95% CI
Total	61,684	80.0	(73.9-84.9)	184,933	76.2	(72.5-79.6)
Age		#			#	
18-24		#			#	
25-34		#		6,283	36.1 [^]	(17.2-60.7)
35-44		#		16,792	63.1 [^]	(49.8-74.6)
45-64	26,597	81.9	(72.0-88.9)	76,505	76.4	(70.5-81.4)
65+	24,534	93.1	(87.6-96.3)	79,451	90.6	(87.3-93.1)
Race						
White, NH	47,748	77.9	(70.9-83.6)	158,180	75.9	(72.1-79.4)
Black, NH		#		12,368	74.1 [^]	(47.5-90.0)
Hispanic		#			#	
Other, NH		#			#	
Sex						
male	32,400	83.0	(75.3-88.6)	99,560	75.2	(69.6-80.1)
female	29,283	76.9	(67.0-84.5)	85,373	77.5	(72.4-81.9)
Age-adjusted^{&}		63.6 [^]	(53.0-73.1)		59.3	(53.7-64.6)

& Percent is age-adjusted to the 2000 United States Population.
 # Rates with <10 in the numerator or <50 in the denominator are suppressed.
 ^ Highly variable rate (confidence interval with a half-width greater than 10).

Albany

Prevent Chronic Diseases

Percentage of adults with current asthma*



	Albany County			Capital Region		
	Est. # of Adults	Percent	95% CI	Est. # of Adults	Percent	95% CI
Total	25,470	10.4	(8.0-13.3)	85,825	11.4	(9.8-13.1)
Age						
18-24	4,043	9.4	(4.3-19.4)	8,015	8.5	(5.1-13.6)
25-34	5,193	12.9	(7.7-21.0)	21,480	17.1	(11.8-24.3)
35-44	4,607	14.3	(8.5-23.1)	14,809	12.8	(9.2-17.6)
45-64	8,372	10.5	(6.3-16.9)	29,947	11.4	(9.1-14.2)
65+	3,208	7.3	(4.4-11.7)	10,717	7.4	(5.9-9.4)
Race						
White, NH	20,525	10.5	(7.8-14.0)	72,459	11.3	(9.6-13.2)
Black, NH	2,188	14.7 [^]	(8.1-25.0)	5,334	14.5 [^]	(7.6-25.7)
Hispanic	1,724	17.0 [^]	(8.5-31.1)	3,520	13.8	(8.0-22.9)
Other, NH		#		4,512	9.0 [^]	(4.0-19.1)
Sex						
male	9,453	8.1	(5.5-11.8)	34,052	9.3	(7.2-11.9)
female	16,016	12.5	(8.9-17.2)	51,772	13.3	(11.2-15.8)
Age-adjusted^{&}		11.1	(8.6-14.1)		11.7	(10.1-13.6)

* Physician diagnosed asthma.

& Percent is age-adjusted to the 2000 United States Population.

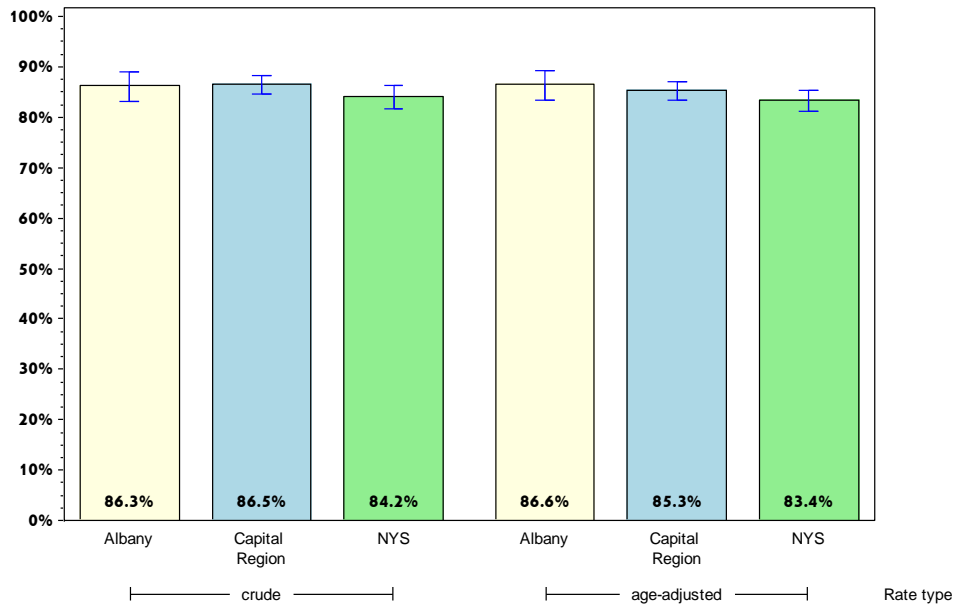
Rates with <10 in the numerator or <50 in the denominator are suppressed.

[^] Highly variable rate (confidence interval with a half-width greater than 10).

Albany

Prevent Chronic Diseases

Percent of adults with cholesterol checked*



Albany County

Capital Region

	Est. # of Adults	Percent	95% CI	Est. # of Adults	Percent	95% CI
Total	207,457	86.3	(83.1-89.0)	639,140	86.5	(84.7-88.2)
Age						
18-24	24,716	60.9 [^]	(44.9-74.9)	44,907	50.1 [^]	(39.8-60.5)
25-34	26,921	72.1	(62.7-79.9)	89,079	74.8	(69.7-79.3)
35-44	29,212	90.7	(82.3-95.3)	100,962	90.2	(86.2-93.1)
45-64	77,597	97.1	(95.0-98.4)	252,435	96.6	(94.9-97.8)
65+	43,213	97.8	(95.0-99.1)	139,365	96.8	(95.2-97.9)
Race						
White, NH	165,565	86.6	(82.8-89.6)	550,269	87.4	(85.4-89.1)
Black, NH	12,458	83.9 [^]	(72.6-91.1)	30,769	84.0	(74.9-90.3)
Hispanic	8,284	81.5 [^]	(69.4-89.5)	18,164	74.0	(64.3-81.8)
Other, NH	21,150	87.5 [^]	(75.3-94.1)	39,939	83.5 [^]	(73.4-90.3)
Sex						
male	96,968	84.2	(78.8-88.5)	304,962	85.4	(82.7-87.7)
female	110,489	88.2	(84.1-91.3)	334,177	87.6	(84.9-89.8)
Age-adjusted^{&}		86.6	(83.4-89.3)		85.3	(83.3-87.0)

* As diagnosed by a health professional.

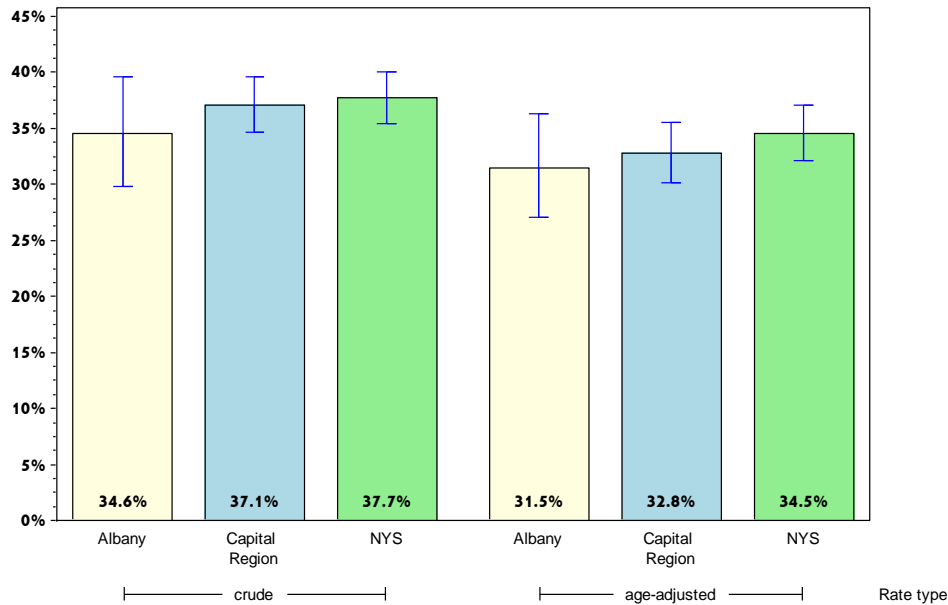
& Percent is age-adjusted to the 2000 United States Population.

[^] Highly variable rate (confidence interval with a half-width greater than 10).

Albany

Prevent Chronic Diseases

Percentage of adults 18 years and older with elevated cholesterol*



	Albany County			Capital Region		
	Est. # of Adults	Percent	95% CI	Est. # of Adults	Percent	95% CI
Total	70,939	34.6	(29.8-39.6)	235,112	37.1	(34.6-39.6)
Age						
18-24	#			5,953	13.3 [^]	(4.8-31.8)
25-34	5,035	18.7	(11.6-28.7)	16,241	18.2	(12.4-26.0)
35-44	5,089	17.4 [^]	(10.5-27.4)	24,632	24.4	(19.4-30.3)
45-64	34,052	44.6	(37.0-52.6)	109,820	43.9	(40.1-47.7)
65+	21,442	50.7	(42.9-58.4)	74,721	54.5	(50.5-58.4)
Race						
White, NH	57,374	35.1	(30.1-40.4)	203,433	37.3	(34.8-39.8)
Black, NH	4,847	38.9 [^]	(27.5-51.7)	10,346	33.6 [^]	(23.0-46.2)
Hispanic	2,637	32.4 [^]	(19.0-49.5)	7,318	40.6 [^]	(29.2-53.1)
Other, NH	#			14,016	35.1 [^]	(21.2-52.1)
Sex						
male	31,440	33.0	(25.8-40.9)	113,334	37.5	(33.8-41.5)
female	39,499	36.0	(29.9-42.5)	121,779	36.6	(33.5-39.9)
Age-adjusted^{&}		31.5	(27.1-36.3)		32.8	(30.1-35.6)

* As diagnosed by a health professional.

& Percent is age-adjusted to the 2000 United States Population.

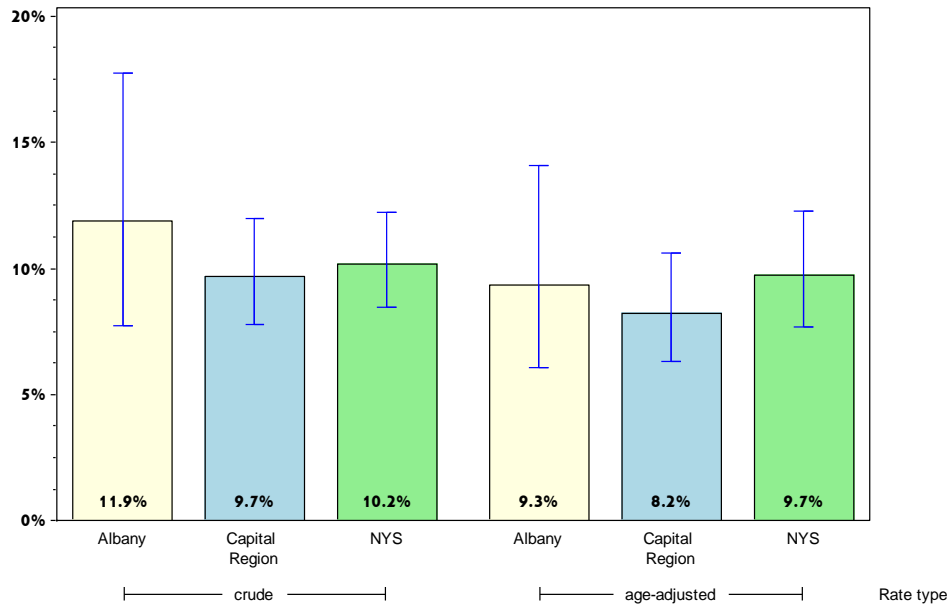
Rates with <10 in the numerator or <50 in the denominator are suppressed.

[^] Highly variable rate (confidence interval with a half-width greater than 10).

Albany

Prevent Chronic Diseases

Percentage of adults who have taken a course or class to learn how to manage their chronic disease or condition*



	Albany County			Capital Region		
	Est. # of Adults	Percent	95% CI	Est. # of Adults	Percent	95% CI
Total	14,932	11.9	(7.7-17.8)	38,954	9.7	(7.8-12.0)
Age		#			#	
18-24		#			#	
25-34		#			#	
35-44		#		2,378	4.4	(2.3-8.5)
45-64	5,502	10.7 [^]	(5.1-21.1)	16,610	10.3	(7.5-14.0)
65+	4,916	14.4	(9.3-21.7)	12,432	11.0	(8.6-13.9)
Race						
White, NH	10,941	10.8	(6.9-16.5)	32,271	9.3	(7.5-11.6)
Black, NH	1,216	15.0 [^]	(7.8-26.9)	2,454	11.4	(6.3-20.0)
Hispanic		#			#	
Other, NH		#			#	
Sex						
male	6,547	11.4	(7.2-17.6)	17,247	9.1	(7.0-11.7)
female	8,385	12.2 [^]	(6.2-22.7)	21,707	10.2	(7.3-14.1)
Age-adjusted^{&}		9.3	(6.1-14.1)		8.2	(6.3-10.6)

* Courses for high blood pressure, arthritis, or diabetes.

& Percent is age-adjusted to the 2000 United States Population.

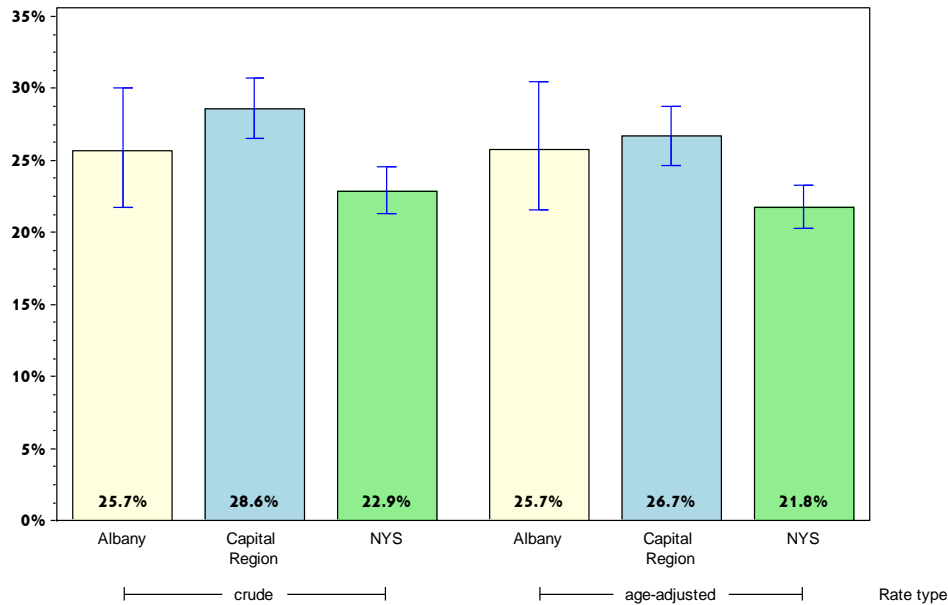
Rates with <10 in the numerator or <50 in the denominator are suppressed.

[^] Highly variable rate (confidence interval with a half-width greater than 10).

Albany

Prevent Chronic Diseases

Percentage of adults with arthritis*



	Albany County			Capital Region		
	Est. # of Adults	Percent	95% CI	Est. # of Adults	Percent	95% CI
Total	63,302	25.7	(21.7-30.0)	215,186	28.6	(26.5-30.7)
Age						
18-24	#			5,786	6.1	(2.9-12.1)
25-34	#			9,822	8.0	(5.3-11.9)
35-44	7,877	24.4 [^]	(11.8-43.7)	22,489	19.5	(14.0-26.6)
45-64	31,260	38.9	(31.6-46.8)	96,695	36.8	(33.2-40.4)
65+	21,082	47.4	(39.8-55.0)	77,396	53.7	(49.8-57.5)
Race						
White, NH	51,884	26.5	(22.4-31.0)	186,495	29.1	(27.0-31.3)
Black, NH	3,591	23.4 [^]	(15.3-34.0)	8,607	23.1	(15.9-32.2)
Hispanic	2,372	23.2 [^]	(13.2-37.6)	5,766	22.5	(15.2-32.0)
Other, NH	#			14,318	28.7 [^]	(16.8-44.4)
Sex						
male	20,579	17.5	(13.4-22.6)	76,893	21.1	(18.7-23.8)
female	42,723	33.1	(27.2-39.5)	138,293	35.5	(32.5-38.6)
Age-adjusted^{&}		25.7	(21.5-30.4)		26.7	(24.7-28.8)

* Includes rheumatoid arthritis, gout, lupus, or fibromyalgia.

& Percent is age-adjusted to the 2000 United States Population.

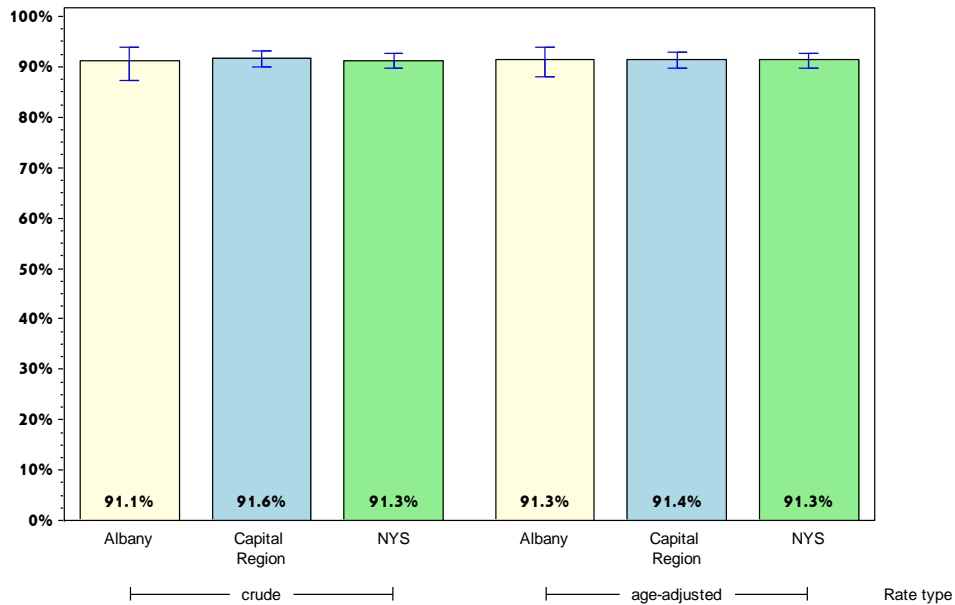
Rates with <10 in the numerator or <50 in the denominator are suppressed.

[^] Highly variable rate (confidence interval with a half-width greater than 10).

Albany

Promote a Healthy and Safe Environment

Percentage of adults who consider their neighborhood suitable for walking and physical activity



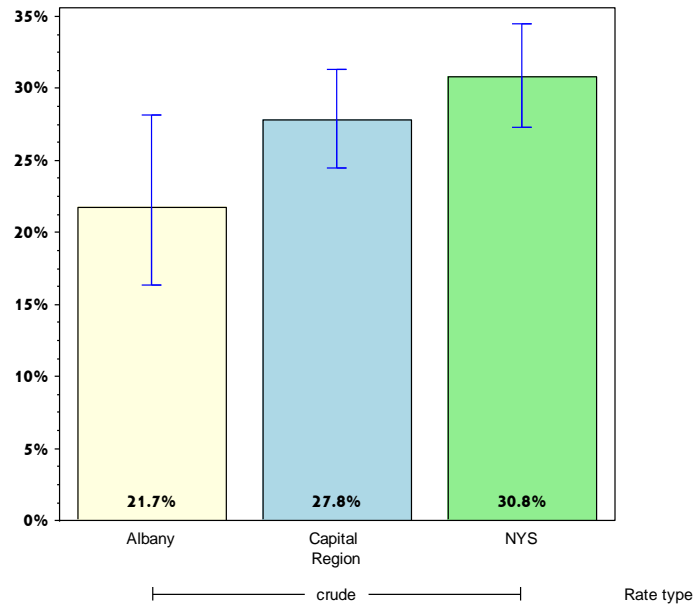
	Albany County			Capital Region		
	Est. # of Adults	Percent	95% CI	Est. # of Adults	Percent	95% CI
Total	212,638	91.1	(87.2-93.9)	655,340	91.6	(89.8-93.0)
Age						
18-24	33,497	85.7 [^]	(65.2-95.0)	77,470	89.2	(79.8-94.5)
25-34	32,979	87.9	(80.6-92.7)	102,214	86.1	(79.6-90.7)
35-44	28,914	93.9	(86.1-97.4)	102,548	93.2	(90.0-95.4)
45-64	73,241	92.4	(85.3-96.2)	234,077	92.8	(90.3-94.7)
65+	39,286	94.0	(89.3-96.7)	128,519	94.2	(92.1-95.7)
Race						
White, NH	172,285	92.7	(89.4-95.0)	565,421	92.4	(90.7-93.8)
Black, NH	11,894	85.8 [^]	(74.8-92.5)	29,736	87.1	(79.3-92.3)
Hispanic	8,708	92.7	(84.0-96.9)	20,397	90.9	(85.2-94.5)
Other, NH	19,751	81.2 [^]	(50.9-94.8)	39,787	84.2 [^]	(67.8-93.1)
Sex						
male	101,713	91.1	(83.9-95.2)	318,464	92.0	(89.0-94.3)
female	110,925	91.1	(86.3-94.3)	336,877	91.1	(89.1-92.8)
Age-adjusted^{&}		91.3	(87.9-93.8)		91.4	(89.6-92.9)

& Percent is age-adjusted to the 2000 United States Population.
[^] Highly variable rate (confidence interval with a half-width greater than 10).

Albany

Promote a Health and Safe Environment

Percentage of adults aged 65+ years with at least one fall in the past 12 months



Albany County

Capital Region

	Est. # of Adults	Percent	95% CI	Est. # of Adults	Percent	95% CI
Total	9,147	21.7	(16.4-28.2)	38,155	27.8	(24.5-31.3)
Age⁺						
18-24						
25-34						
35-44						
45-64						
65+						
Race						
White, NH	8,752	23.1	(17.3-30.2)	36,209	28.6	(25.2-32.3)
Black, NH		#			#	
Hispanic		#			#	
Other, NH		#			#	
Sex						
male	3,356	17.3	(11.4-25.3)	15,469	25.5	(20.9-30.7)
female	5,791	25.5 [^]	(17.5-35.5)	22,685	29.6	(25.1-34.5)
Age-adjusted^{+,&}						

& Percent is age-adjusted to the 2000 United States Population.

+ Age-adjusted and age specific percent not generated for health indicators with age range limits.

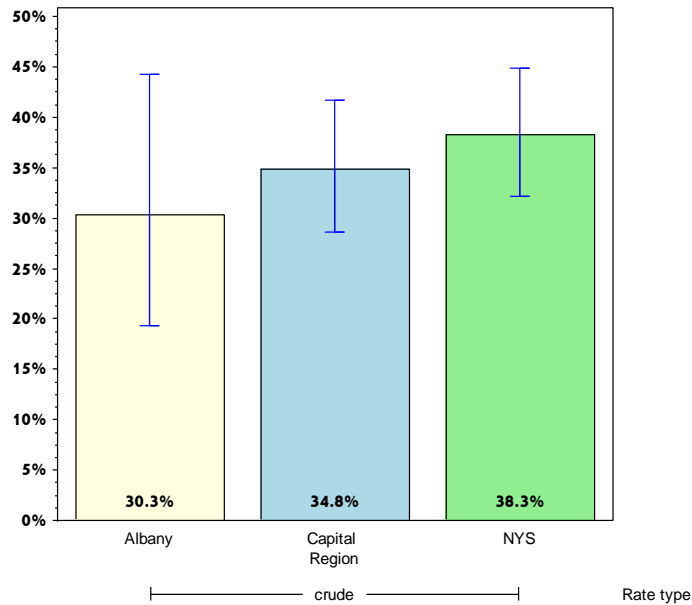
Rates with <10 in the numerator or <50 in the denominator are suppressed.

^ Highly variable rate (confidence interval with a half-width greater than 10).

Albany

Promote a Health and Safe Environment

Among adults aged 65+ years with at least one fall in the past 12 months, percent that resulted in injury*



Albany County

Capital Region

	Est. # of Adults	Percent	95% CI	Est. # of Adults	Percent	95% CI
Total	2,773	30.3 [^]	(19.3-44.2)	13,231	34.8	(28.6-41.7)
Age⁺						
18-24						
25-34						
35-44						
45-64						
65+						
Race						
White, NH	2,548	29.1 [^]	(17.9-43.6)	12,411	34.4	(28.1-41.4)
Black, NH		#			#	
Hispanic		#			#	
Other, NH		#			#	
Sex						
male		#		4,370	28.2 [^]	(19.7-38.7)
female		#		8,861	39.4	(30.9-48.5)
Age-adjusted^{+,&}						

* Falls that limited regular activities or lead to doctor visits.

& Percent is age-adjusted to the 2000 United States Population.

+ Age-adjusted and age specific percent not generated for health indicators with age range limits.

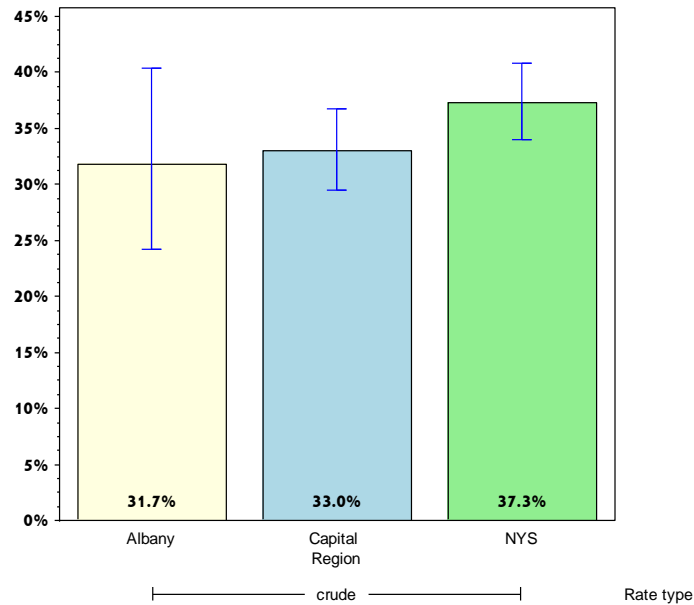
Rates with <10 in the numerator or <50 in the denominator are suppressed.

[^] Highly variable rate (confidence interval with a half-width greater than 10).

Albany

Prevent HIV/STDs, Vaccine Preventable Diseases and Healthcare-Associated Infections

Percentage of adults aged 47-68 years reporting ever tested for Hepatitis C (HCV)



Albany County

Capital Region

	Est. # of Adults	Percent	95% CI	Est. # of Adults	Percent	95% CI
Total	22,502	31.7	(24.3-40.3)	76,642	33.0	(29.5-36.7)
Age⁺						
18-24						
25-34						
35-44						
45-64						
65+						
Race						
White, NH	18,259	30.5	(22.4-40.1)	67,188	33.0	(29.3-36.9)
Black, NH		#		4,175	45.6 [^]	(27.9-64.4)
Hispanic		#			#	
Other, NH		#			#	
Sex						
male	11,771	38.1 [^]	(26.1-51.9)	42,342	37.1	(31.6-42.9)
female	10,731	26.8 [^]	(17.8-38.2)	34,300	29.1	(24.6-34.0)
Age-adjusted^{+,&}						

& Percent is age-adjusted to the 2000 United States Population.

+ Age-adjusted and age specific percent not generated for health indicators with age range limits.

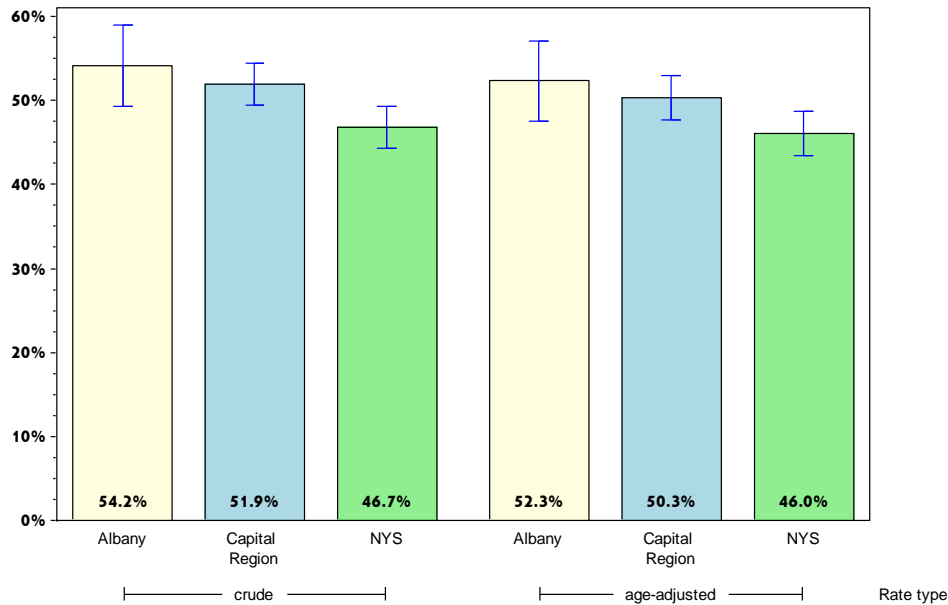
Rates with <10 in the numerator or <50 in the denominator are suppressed.

[^] Highly variable rate (confidence interval with a half-width greater than 10).

Albany

Prevent HIV/STDs, Vaccine Preventable Diseases and Healthcare-Associated Infections

Percentage of adults aged 18+ years with flu immunization in the past year*



	Albany County			Capital Region		
	Est. # of Adults	Percent	95% CI	Est. # of Adults	Percent	95% CI
Total	127,110	54.2	(49.3-59.0)	374,103	51.9	(49.4-54.4)
Age						
18-24	23,243	59.5 [^]	(43.3-73.8)	39,893	45.7 [^]	(35.3-56.5)
25-34	10,589	28.0	(20.2-37.5)	43,833	36.8	(30.7-43.4)
35-44	15,091	48.0 [^]	(34.2-62.1)	47,801	43.1	(36.6-49.8)
45-64	44,030	55.6	(47.8-63.1)	130,568	51.5	(47.7-55.2)
65+	30,635	72.7	(64.9-79.3)	104,721	75.8	(72.3-78.9)
Race						
White, NH	100,675	53.8	(48.5-59.0)	318,858	51.8	(49.2-54.3)
Black, NH	6,280	45.3 [^]	(33.8-57.4)	14,742	43.2 [^]	(31.3-55.9)
Hispanic	4,234	45.1 [^]	(30.3-60.8)	10,649	46.5 [^]	(36.6-56.8)
Other, NH	15,922	65.5 [^]	(45.2-81.3)	29,854	62.7 [^]	(49.2-74.6)
Sex						
male	58,511	52.1	(44.5-59.5)	168,675	48.4	(44.6-52.2)
female	68,599	56.1	(49.7-62.3)	205,428	55.2	(51.9-58.5)
Age-adjusted^{&}		52.3	(47.5-57.1)		50.3	(47.7-53.0)

* Includes flu shot or flu spray

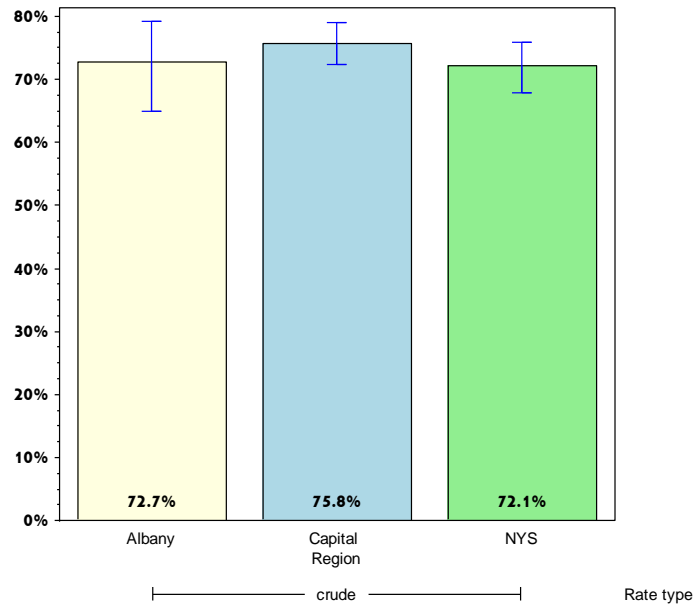
& Percent is age-adjusted to the 2000 United States Population.

[^] Highly variable rate (confidence interval with a half-width greater than 10).

Albany

Prevent HIV/STDs, Vaccine Preventable Diseases and Healthcare-Associated Infections

Percentage of adults aged 65+ years with flu immunization in the past year*



	Albany County			Capital Region		
	Est. # of Adults	Percent	95% CI	Est. # of Adults	Percent	95% CI
Total Age⁺	30,635	72.7	(64.9-79.3)	104,721	75.8	(72.3-78.9)
18-24						
25-34						
35-44						
45-64						
65+						
Race						
White, NH	27,628	73.0	(64.8-79.9)	96,169	75.6	(72.0-78.8)
Black, NH		#			#	
Hispanic		#			#	
Other, NH		#			#	
Sex						
male	14,024	72.1 [^]	(60.7-81.3)	44,927	73.5	(67.8-78.5)
female	16,611	73.1 [^]	(62.3-81.8)	59,794	77.6	(73.3-81.4)
Age-adjusted^{+,&}						

* Includes flu shot or flu spray

& Percent is age-adjusted to the 2000 United States Population.

+ Age-adjusted and age specific percent not generated for health indicators with age range limits.

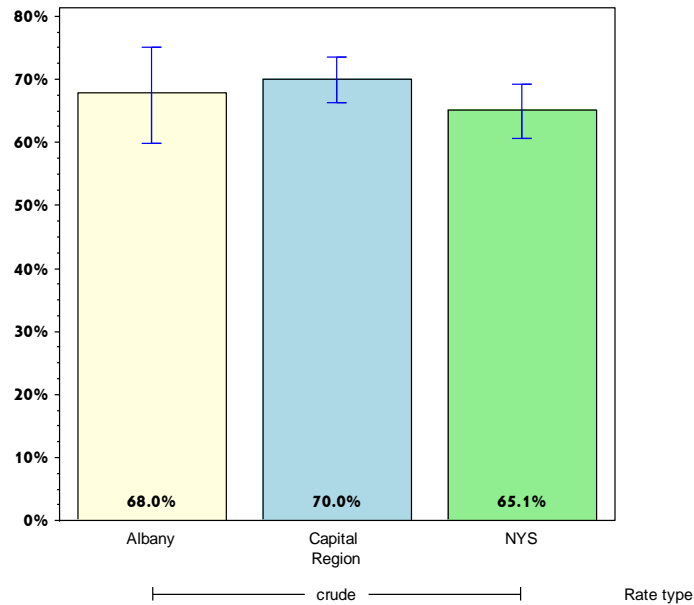
Rates with <10 in the numerator or <50 in the denominator are suppressed.

[^] Highly variable rate (confidence interval with a half-width greater than 10).

Albany

Prevent HIV/STDs, Vaccine Preventable Diseases and Healthcare-Associated Infections

Percentage of adults aged 65+ years with pneumococcal immunization



Albany County

Capital Region

	Est. # of Adults	Percent	95% CI	Est. # of Adults	Percent	95% CI
Total Age⁺	27,309	68.0	(59.9-75.0)	92,729	70.0	(66.2-73.5)
18-24						
25-34						
35-44						
45-64						
65+						
Race						
White, NH	24,496	68.3	(59.7-75.7)	86,365	71.1	(67.2-74.6)
Black, NH		#			#	
Hispanic		#			#	
Other, NH		#			#	
Sex						
male	12,059	64.4 [^]	(52.8-74.5)	36,740	63.6	(57.5-69.3)
female	15,250	71.1 [^]	(59.5-80.4)	55,989	74.9	(70.2-79.2)
Age-adjusted^{+,&}						

& Percent is age-adjusted to the 2000 United States Population.

+ Age-adjusted and age specific percent not generated for health indicators with age range limits.

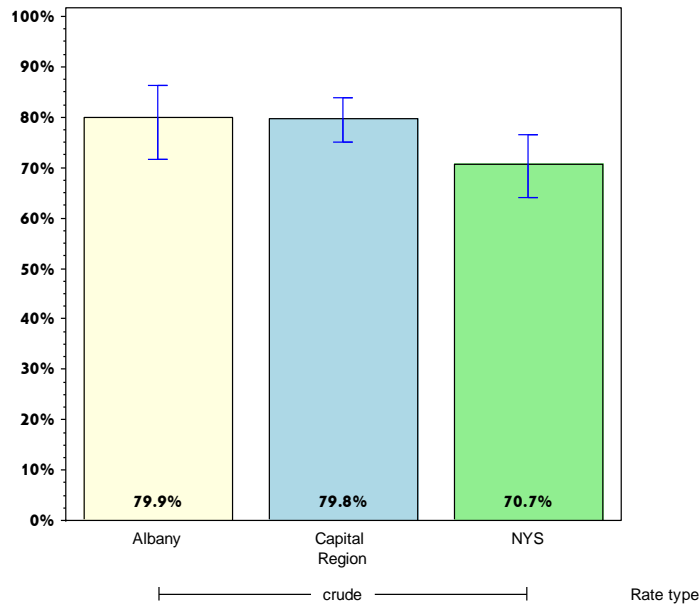
Rates with <10 in the numerator or <50 in the denominator are suppressed.

[^] Highly variable rate (confidence interval with a half-width greater than 10).

Albany

Promote Healthy Women, Infants, and Children

Percentage of women aged 18-44 years who had dental visit within the last year



Albany County

Capital Region

	Est. # of Adults	Percent	95% CI	Est. # of Adults	Percent	95% CI
Total	38,646	79.9	(71.6-86.3)	120,363	79.8	(75.1-83.8)
Age⁺						
18-24						
25-34						
35-44						
45-64						
65+						
Race						
White, NH	25,006	78.4 [^]	(67.7-86.4)	97,127	82.5	(77.5-86.6)
Black, NH		#			#	
Hispanic		#			#	
Other, NH		#			#	
Sex						
male		#			#	
female	38,646	79.9	(71.6-86.3)	120,363	79.8	(75.1-83.8)
Age-adjusted^{+,&}						

& Percent is age-adjusted to the 2000 United States Population.

+ Age-adjusted and age specific percent not generated for health indicators with age range limits.

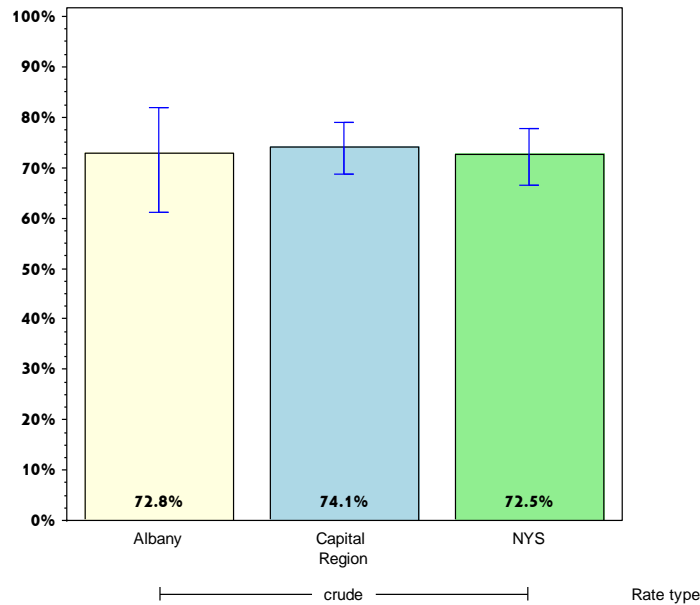
Rates with <10 in the numerator or <50 in the denominator are suppressed.

[^] Highly variable rate (confidence interval with a half-width greater than 10).

Albany

Promote Healthy Women, Infants, and Children

Women aged 18-44 years who saw a doctor for a routine checkup within the last year



Albany County

Capital Region

	Est. # of Adults	Percent	95% CI	Est. # of Adults	Percent	95% CI
Total	38,155	72.8 [^]	(61.0-82.0)	119,498	74.1	(68.6-79.0)
Age⁺						
18-24						
25-34						
35-44						
45-64						
65+						
Race						
White, NH	23,720	67.0 [^]	(52.3-79.1)	91,769	72.7	(66.2-78.4)
Black, NH		#		9,034	73.0 [^]	(53.7-86.3)
Hispanic		#		4,441	65.9 [^]	(48.1-80.1)
Other, NH		#			#	
Sex						
male		#			#	
female	38,155	72.8 [^]	(61.0-82.0)	119,498	74.1	(68.6-79.0)
Age-adjusted^{+,&}						

& Percent is age-adjusted to the 2000 United States Population.

+ Age-adjusted and age specific percent not generated for health indicators with age range limits.

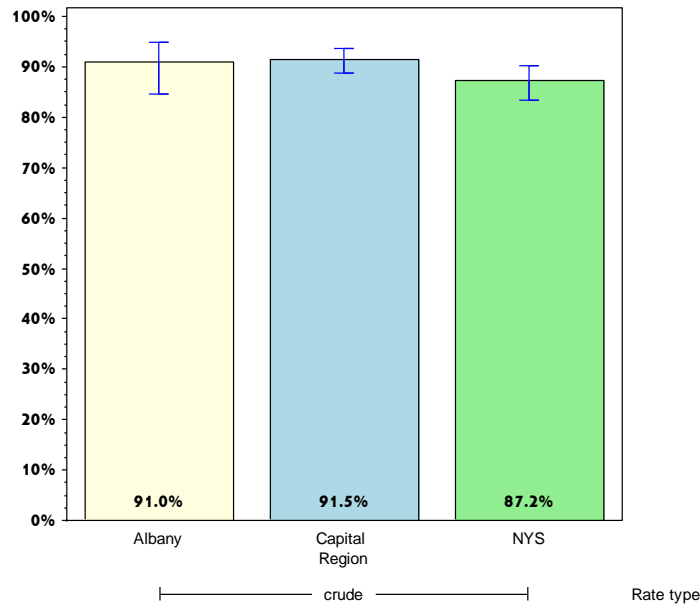
Rates with <10 in the numerator or <50 in the denominator are suppressed.

[^] Highly variable rate (confidence interval with a half-width greater than 10).

Albany

Promote Healthy Women, Infants, and Children

Percentage of women aged 18-64 years with health care coverage



Albany County

Capital Region

	Est. # of Adults	Percent	95% CI	Est. # of Adults	Percent	95% CI
Total Age⁺	89,866	91.0	(84.7-94.9)	272,288	91.5	(88.8-93.5)
18-24						
25-34						
35-44						
45-64						
65+						
Race						
White, NH	69,798	91.1	(82.7-95.6)	231,253	92.5	(89.8-94.6)
Black, NH		#		13,163	85.1 [^]	(67.6-94.0)
Hispanic		#		7,840	79.4 [^]	(67.0-88.0)
Other, NH		#		20,032	89.6 [^]	(68.0-97.2)
Sex						
male		#			#	
female	89,866	91.0	(84.7-94.9)	272,288	91.5	(88.8-93.5)
Age-adjusted^{+,&}						

& Percent is age-adjusted to the 2000 United States Population.

+ Age-adjusted and age specific percent not generated for health indicators with age range limits.

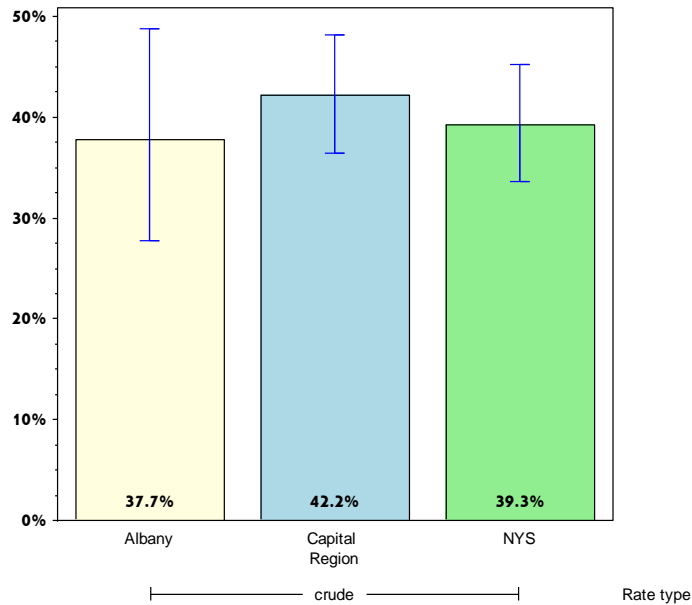
Rates with <10 in the numerator or <50 in the denominator are suppressed.

[^] Highly variable rate (confidence interval with a half-width greater than 10).

Albany

Promote Healthy Women, Infants, and Children

Percentage of women aged 18-44 years whose health care provider discussed planning a healthy pregnancy



Albany County

Capital Region

	Est. # of Adults	Percent	95% CI	Est. # of Adults	Percent	95% CI
Total	18,349	37.7 [^]	(27.8-48.8)	63,605	42.2	(36.4-48.1)
Age⁺						
18-24						
25-34						
35-44						
45-64						
65+						
Race						
White, NH	12,933	40.6 [^]	(28.7-53.7)	51,464	43.9	(37.5-50.6)
Black, NH		#			#	
Hispanic		#			#	
Other, NH		#			#	
Sex						
male		#			#	
female	18,349	37.7 [^]	(27.8-48.8)	63,605	42.2	(36.4-48.1)
Age-adjusted^{+,&}						

& Percent is age-adjusted to the 2000 United States Population.

+ Age-adjusted and age specific percent not generated for health indicators with age range limits.

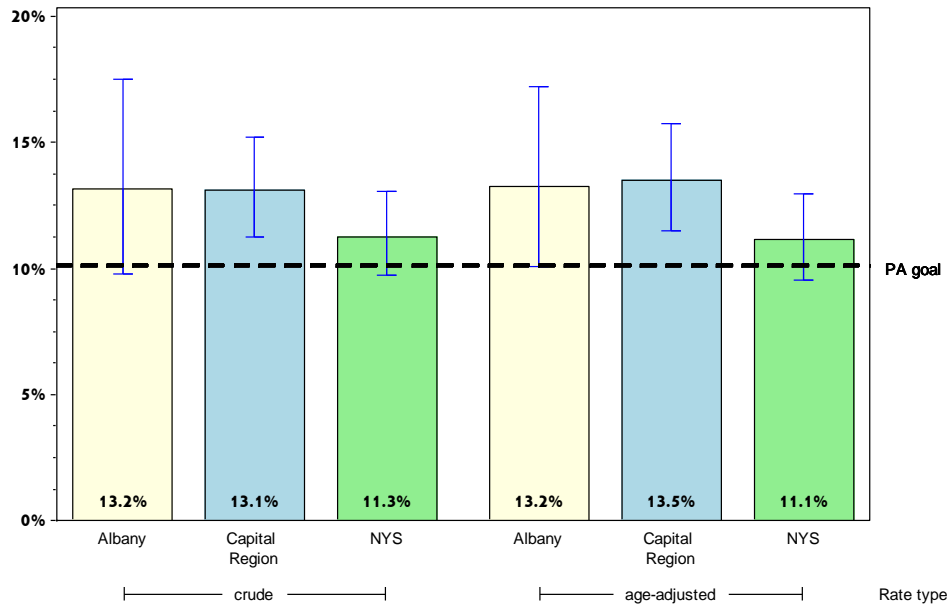
Rates with <10 in the numerator or <50 in the denominator are suppressed.

[^] Highly variable rate (confidence interval with a half-width greater than 10).

Albany

Promote Mental Health and Prevention Substance Abuse

Percentage of adults with poor mental health for 14 or more days in the last month



Albany County

Capital Region

	Est. # of Adults	Percent	95% CI	Est. # of Adults	Percent	95% CI
Total	31,851	13.2	(9.8-17.5)	97,381	13.1	(11.2-15.2)
Age						
18-24	5,319	12.4 [^]	(4.2-31.3)	15,415	16.5	(10.0-25.9)
25-34	7,919	19.8 [^]	(11.0-33.2)	21,884	17.7	(12.4-24.8)
35-44	2,780	8.7	(4.7-15.3)	15,297	13.4	(9.0-19.6)
45-64	12,311	15.8	(10.3-23.4)	35,365	13.7	(11.1-16.8)
65+	3,521	8.3	(4.5-14.6)	8,895	6.3	(4.5-8.8)
Race						
White, NH	26,472	13.8	(9.8-19.1)	77,087	12.2	(10.3-14.4)
Black, NH	3,287	22.0 [^]	(13.8-33.1)	10,860	29.8 [^]	(18.5-44.2)
Hispanic	1,292	13.5 [^]	(7.1-24.2)	4,600	19.0	(12.7-27.4)
Other, NH		#		4,834	9.7 [^]	(4.2-20.9)
Sex						
male	11,911	10.3	(6.3-16.5)	45,948	12.7	(9.9-16.1)
female	19,940	15.8	(10.9-22.3)	51,433	13.5	(11.2-16.2)
Age-adjusted^{&}		13.2	(10.1-17.2)		13.5	(11.5-15.7)

& Percent is age-adjusted to the 2000 United States Population.

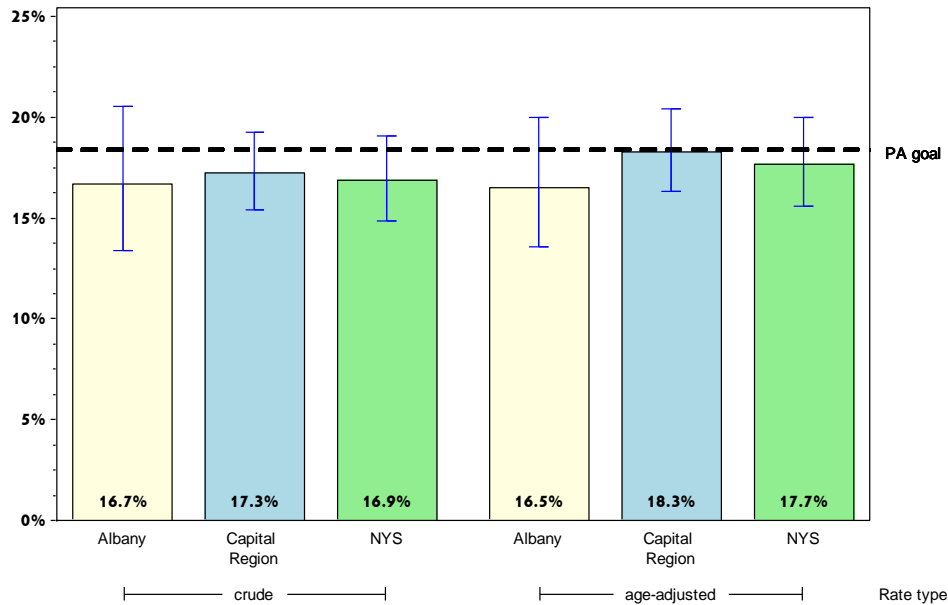
Rates with <10 in the numerator or <50 in the denominator are suppressed.

[^] Highly variable rate (confidence interval with a half-width greater than 10).

Albany

Promote Mental Health and Prevention Substance Abuse

Percentage of adult binge drinking during the past month*



Albany County

Capital Region

	Est. # of Adults	Percent	95% CI	Est. # of Adults	Percent	95% CI
Total	39,280	16.7	(13.4-20.6)	124,613	17.3	(15.4-19.3)
Age						
18-24	13,034	32.1 [^]	(18.7-49.3)	26,578	29.9 [^]	(21.5-40.0)
25-34	10,621	28.2	(20.6-37.2)	33,259	27.9	(22.6-33.9)
35-44	3,891	12.4	(7.0-21.2)	21,657	19.6	(15.1-25.1)
45-64	10,372	13.3	(9.7-18.0)	35,598	14.0	(11.9-16.6)
65+	#	#		6,695	4.8	(3.4-6.8)
Race						
White, NH	34,310	18.3	(14.4-22.9)	109,332	17.7	(15.8-19.8)
Black, NH	2,844	20.5 [^]	(12.0-32.8)	6,496	18.9 [^]	(9.3-34.8)
Hispanic	1,281	13.5 [^]	(6.7-25.5)	3,636	15.3	(9.8-23.0)
Other, NH	#	#		5,148	11.1 [^]	(4.9-23.0)
Sex						
male	23,479	20.6	(15.9-26.4)	76,161	21.9	(19.0-25.1)
female	15,800	13.0	(8.7-18.9)	48,452	12.9	(10.7-15.5)
Age-adjusted^{&}		16.5	(13.5-20.0)		18.3	(16.3-20.4)

* Men who have five or more drinks, women having four or more drinks on one occasion

& Percent is age-adjusted to the 2000 United States Population.

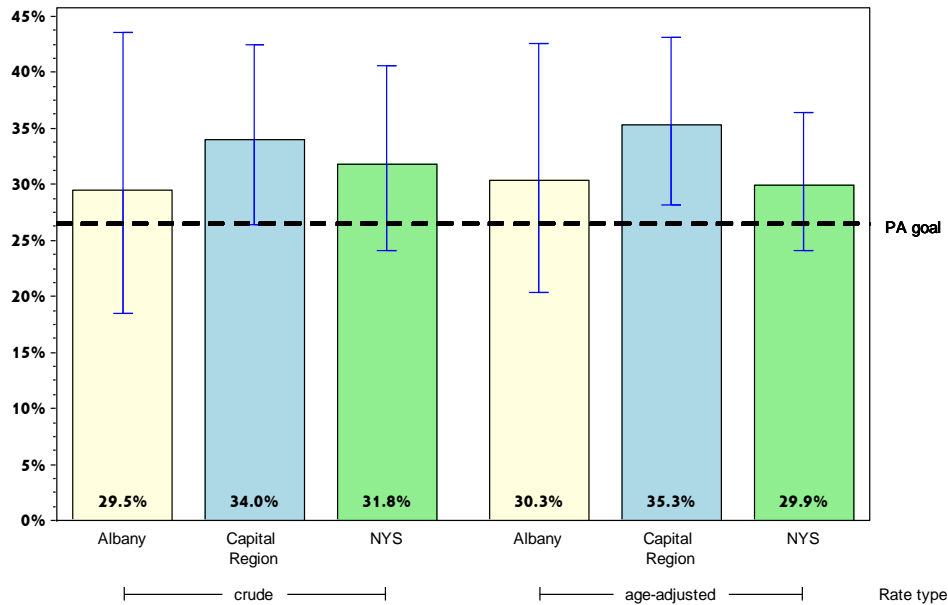
Rates with <10 in the numerator or <50 in the denominator are suppressed.

[^] Highly variable rate (confidence interval with a half-width greater than 10).

Albany

Promote Mental Health and Prevention Substance Abuse

Percentage of cigarette smoking among adults who report poor mental health



	Albany County			Capital Region		
	Est. # of Adults	Percent	95% CI	Est. # of Adults	Percent	95% CI
Total	9,316	29.5 [^]	(18.5-43.5)	32,029	34.0	(26.4-42.5)
Age		#			#	
18-24		#			#	
25-34		#		8,601	39.7 [^]	(22.1-60.5)
35-44		#			#	
45-64	4,729	38.4 [^]	(19.7-61.3)	10,462	29.8 [^]	(20.9-40.6)
65+		#			#	
Race						
White, NH	7,177	27.4 [^]	(15.3-43.9)	25,081	33.3	(25.0-42.8)
Black, NH		#			#	
Hispanic		#			#	
Other, NH		#			#	
Sex						
male		#		17,555	39.9 [^]	(27.2-54.2)
female	4,861	24.7 [^]	(13.7-40.4)	14,474	28.8	(20.8-38.5)
Age-adjusted^{&}		30.3 [^]	(20.4-42.6)		35.3	(28.2-43.2)

& Percent is age-adjusted to the 2000 United States Population.

Rates with <10 in the numerator or <50 in the denominator are suppressed.

[^] Highly variable rate (confidence interval with a half-width greater than 10).