



Rensselaer County Health Profile

Prepared by:



www.hcdiny.org

Rensselaer County

General Health:

Indicator	Year(s)	Rensselaer County	Capital Region	NYS, except NYC	PA 2017 Objective	County # change needed to reach PA Objective
	For rate/% For #	Rate/% #	Rate/%	Rate/%	Rate/%	
Total mortality rate per 100,000, age-adjusted <i>Number:</i>	2010-2012	794.7	712.0	681.1		
	2012	1,504				
Percentage of premature deaths (<65 years) <i>Number:</i>	2013	23.1	22.4	21.8	21.8	-19
		333				
Years of Potential Life Lost (YPLL) per 100,000	2010-2012	6,280.9	5,966.4	5,851.7		
Rate of preventable hospitalizations- ages 18+ yrs, age-adjusted <i>Number:</i>	2013	113.9	103.6	113.2	133.3	*
		1,568				
Total ED visit rate per 10,000, age-adjusted <i>Number:</i>	2010-2012	3,725.4	3,573.5	3,668.9		
	2012	30,077				
Percentage of adults with health insurance- ages 18-64 yrs <i>Number w/o health insurance:</i>	2013	89.9	89.0	NA	100.0	11,598
		11,598				
Percentage of adults with a regular health care provider-ages 18+ yrs, age-adjusted <i>Number w/o regular health care provider:</i>	2013-2014	86.3	85.9	84.6	90.8	5,699
		17,350				
Percentage of adults not receiving regular care due to cost, age-adjusted <i>Number:</i>	2013-2014	11.1	10.8	12.0		
		13,771				

PA, Prevention Agenda

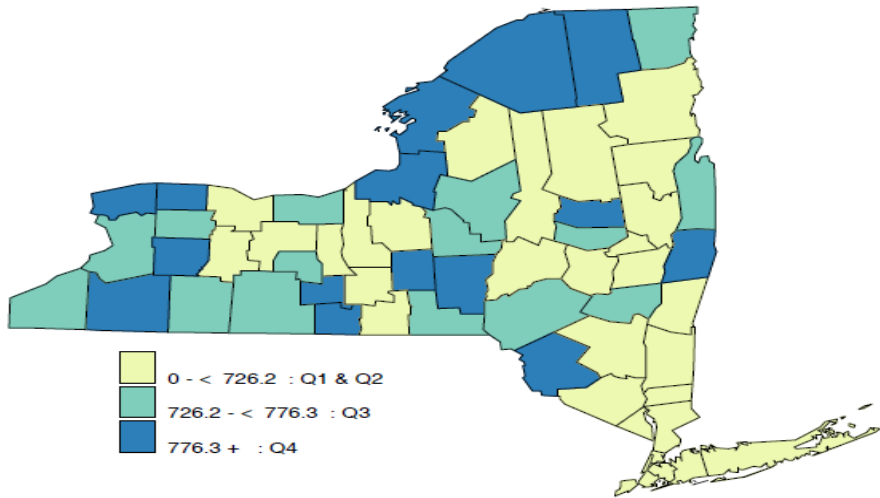
*=PA objective reached

=Rate ranked in 3rd Quartile among all counties of NYS =Ranked in 4th Quartile among all counties of NY

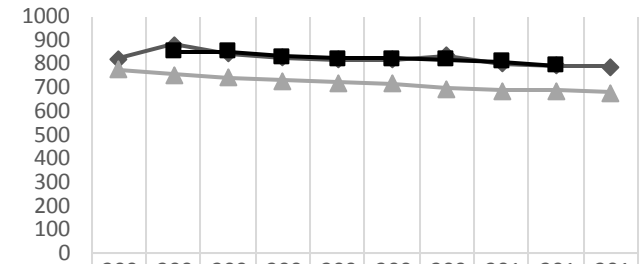
Rank	Leading Causes of death				Leading Causes of Premature Death			
	Rensselaer County		NYS, excluding NYC		Rensselaer County		NYS, excluding NYC	
	Total Deaths : 1,503		Total Deaths : 96,428		Average # in 1 Year : 559		Average # in 1 Year : 35,523	
	Cause	Rate* Number	Cause	Rate*	Cause	Rate* Avg. Number	Cause	Rate*
#1	Heart Disease	209 408	Heart Disease	182	Cancer	419 198	Cancer	295
#2	Cancer	185 353	Cancer	165	Heart Disease	250 110	Heart Disease	178
#3	CLRD	58 109	CLRD	38	CLRD	65 32	Unintentional Injury	72
#4	Stroke	34 65	Stroke	30	Unintentional Injury	48 23	CLRD	38
#5	Unintentional Injury	24 43	Unintentional Injury	31	Diabetes	35 15	Stroke	26
					Liver Disease	34 15		

CLRD, Chronic Lower Respiratory Disease, *Rates are age adjusted

Total Mortality rate per 100,000 (2010-2012)

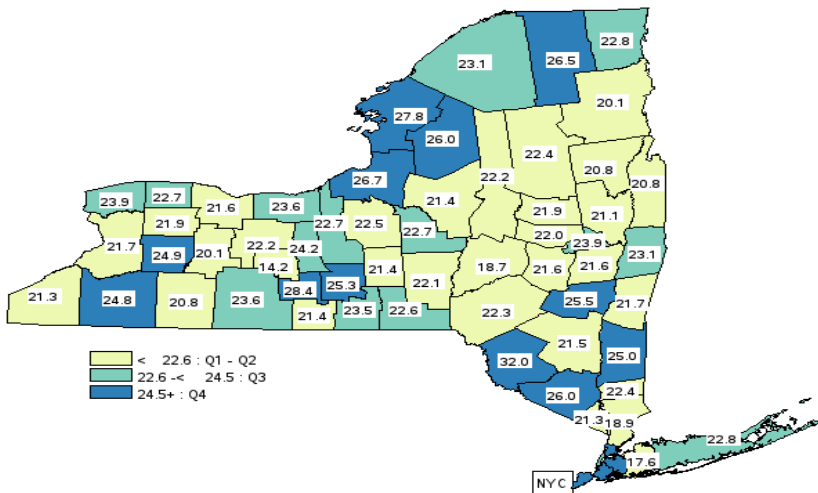


◆ Rensselaer Cnty-1 Yr
 ■ Rensselaer Cnty-3 Yr Avg
 ▲ NYS exc. NYC

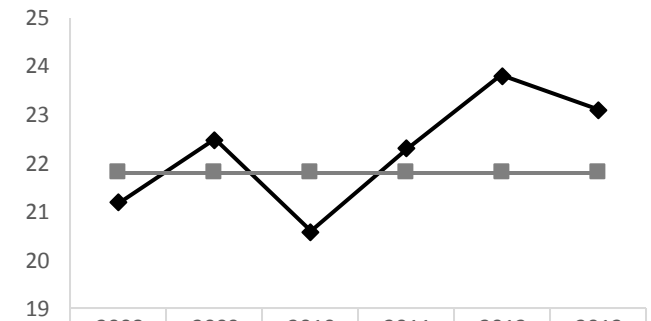


◆ Rensselaer Cnty-1 Yr	825	882.4	846.1	827.4	818.1	820.5	836.4	801.6	791.8	790
■ Rensselaer Cnty-3 Yr Avg		851.2	851.4	830.2	822	824.7	818.8	810	794.7	
▲ NYS exc. NYC	778.5	756.7	744.8	730.1	722.7	716.5	697.2	688.3	688.6	681.4

Percentage of premature deaths (<65 Years) 2013



◆ Rensselaer
 ■ Prevention Agenda



◆ Rensselaer	21.2	22.5	20.6	22.3	23.8	23.1
■ Prevention Agenda	21.8	21.8	21.8	21.8	21.8	21.8

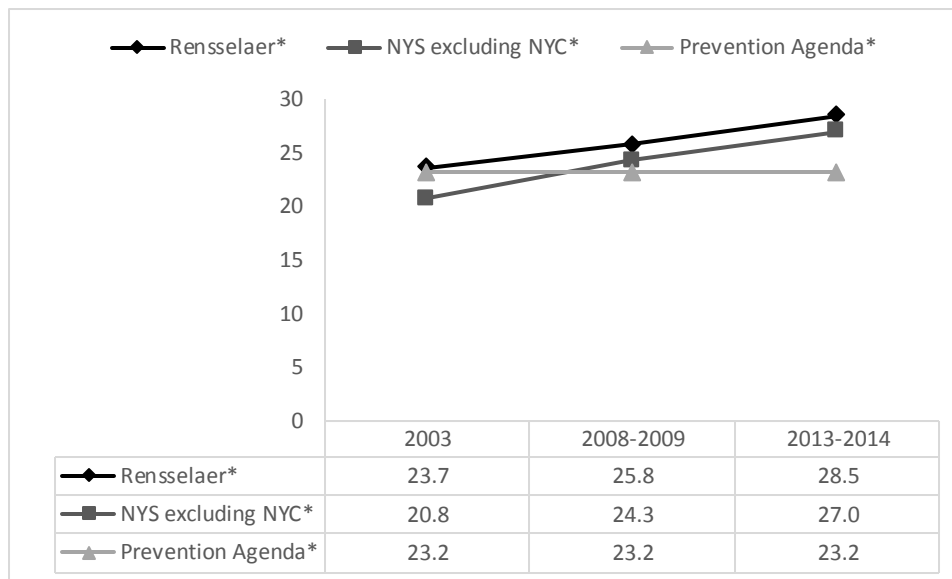
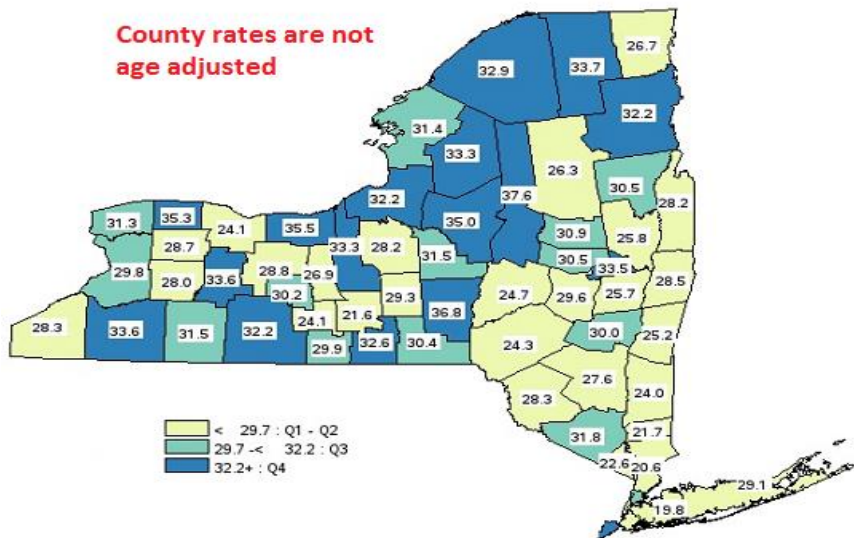
Reduce Obesity in Children and Adults:

Indicator	Year(s)	Rensselaer County	Capital Region	NYS, except NYC	PA 2017 Objective	County # change needed to reach PA Objective
	For rate/% For #	Rate/% #	Rate/%	Rate/%	Rate/%	
Percentage of adults who are obese, age-adjusted <i>Number:</i>	2013-2014	26.8 24,104	27.8	27.0	23.2	-3,238
Percentage of children & adolescents who are obese <i>Number:</i>	2010-2012	17.4 4,285	17.4	17.6	16.7	-172
Percentage of adults not engaged in some type of leisure time physical activity, age adjusted <i>Number:</i>	2013-2014	26.1 33,309	23.4	26.2		
Percent diabetes prevalence in adults, age adjusted <i>Number:</i>	2013-2014	10.0 12,372	8.7	8.2		
Diabetes Mortality rate per 100,000, age adjusted <i>Number :</i>	2010-2012 2012	18.7 40	15.7	15.3		
Diabetes (primary diagnosis) hospitalization rate per 10,000, age-adjusted <i>Number:</i>	2010-2012 2012	15.2 243	12.5	14.4		
Hospitalization rate for short-term complications of diabetes per 10,000- age 18+ yrs <i>Average Annual Number:</i>	2011-2013	7.5 95	6.2	5.8	4.9	-33
Coronary heart disease mortality rate per 100,000, age-adjusted <i>Number:</i>	2010-2012 2012	135.3 238	124.5	135.8		
Coronary heart disease hospitalization rate per 10,000, age-adjusted <i>Number:</i>	2010-2012 2012	27.6 508	24.7	35.9		
Congestive heart failure mortality rate per 100,000, age-adjusted <i>Number:</i>	2010-2012 2012	22.3 47	18.0	15.6		
Congestive heart failure hospitalization rate per 10,000, age-adjusted <i>Number:</i>	2010-2012 2012	22.6 377	21.3	24.2		
Cerebrovascular disease (stroke) mortality rate per 100,000, age-adjusted <i>Number:</i>	2010-2012 2012	36.6 65	32.3	30.6		
Cerebrovascular disease (stroke) hospitalization rate per 10,000, age-adjusted <i>Number:</i>	2010-2012 2012	23.3 388	22.5	24.5		
Heart attack mortality rate per 100,000, age-adjusted <i>Number:</i>	2010-2012 2012	30.6 53	28.2	35.9		
Heart attack hospitalization rate per 10,000 , age adjusted <i>Number:</i>	2013	12.4 239	13.2	15.2	14.0	*

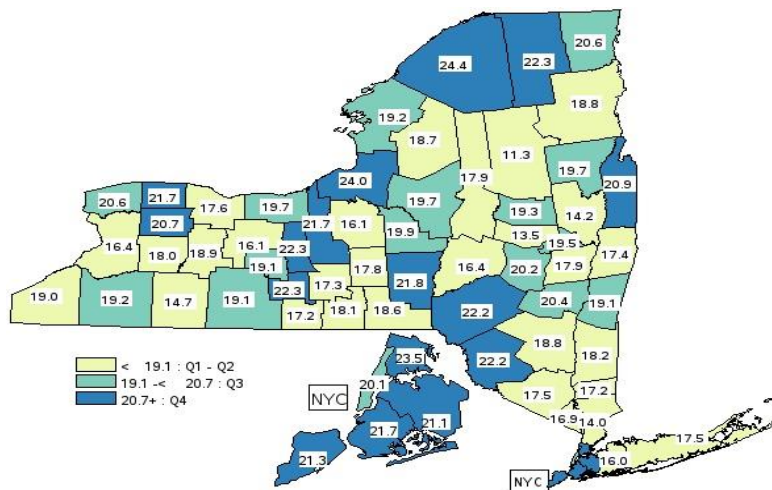
PA, Prevention Agenda * = PA objective reached = Rate ranked in 3rd Quartile among all counties of NYS = Ranked in 4th Quartile among all counties of NY

Percentage of Adults Who are Obese (2013-2014)

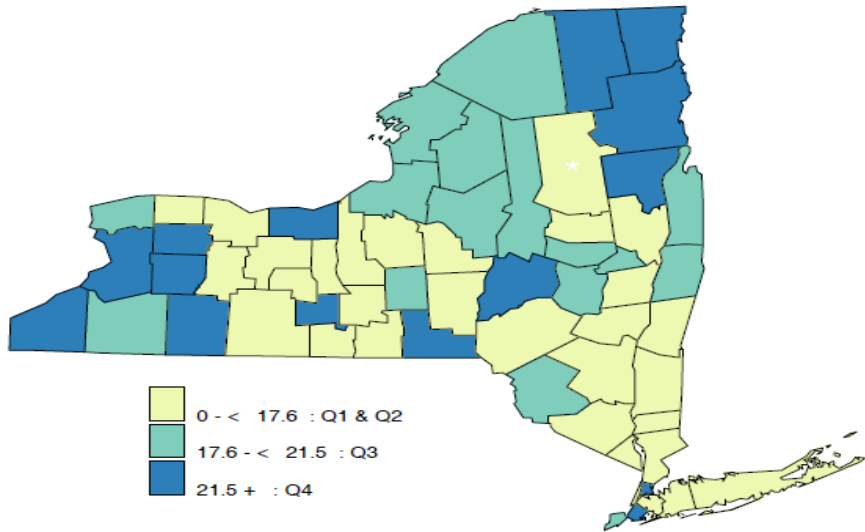
County rates are not age adjusted



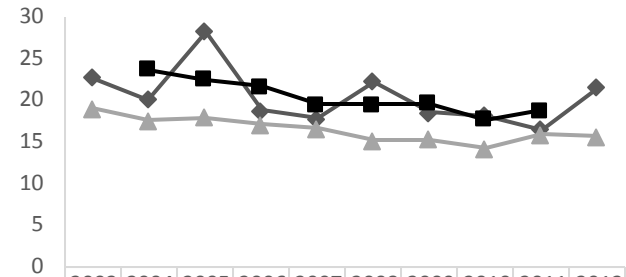
Percentage of Children and Adolescents Who are Obese (2010-2012)



Diabetes Mortality rate per 100,000 (2010-2012)

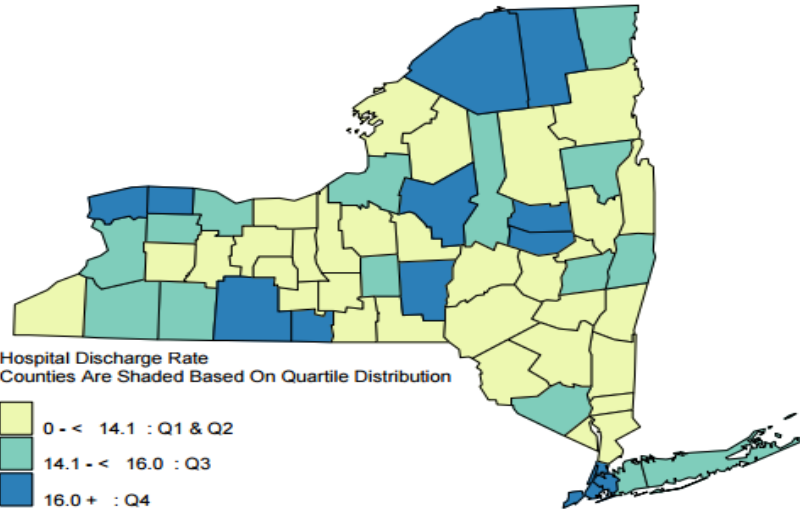


◆ Rensselaer Cnty-1 Yr ■ Rensselaer Cnty-3 Yr Avg ▲ NYS exc. NYC

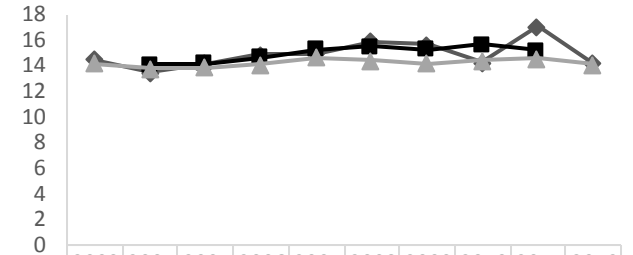


◆ Rensselaer Cnty-1 Yr	22.7	20	28.2	18.7	17.8	22.2	18.5	18.1	16.5	21.5
■ Rensselaer Cnty-3 Yr Avg		23.7	22.4	21.6	19.5	19.5	19.6	17.7	18.7	
▲ NYS exc. NYC	19	17.5	17.9	17.1	16.6	15.1	15.3	14.2	15.9	15.6

Diabetes (primary diagnosis) Hospitalizations per 10,000 (2010-2012)

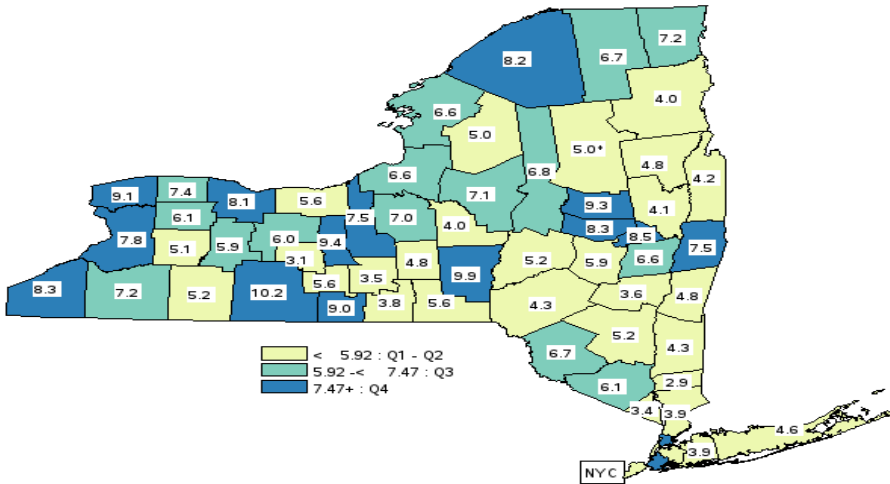


◆ Rensselaer Cnty-1 Yr ■ Rensselaer Cnty-3 Yr Avg ▲ NYS exc. NYC

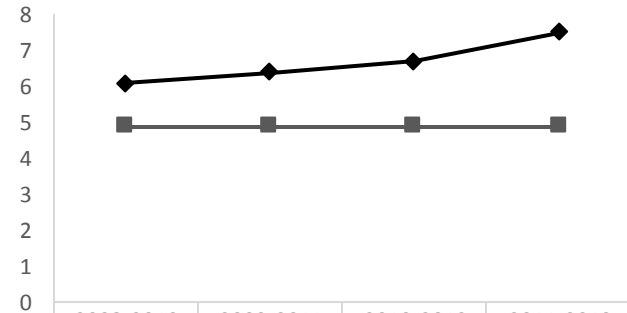


	2003	2004	2005	2006	2007	2008	2009	2010	2011	2012
◆ Rensselaer Cnty-1 Yr	14.5	13.5	14.2	14.9	15	15.9	15.7	14.3	17.1	14.2
■ Rensselaer Cnty-3 Yr Avg		14.1	14.2	14.7	15.3	15.5	15.3	15.7	15.2	
▲ NYS exc. NYC	14.2	13.8	13.9	14.1	14.7	14.4	14.2	14.4	14.6	14.1

Hospitalizations for short term complications of Diabetes per 10,000 aged 18+(2011-2013)

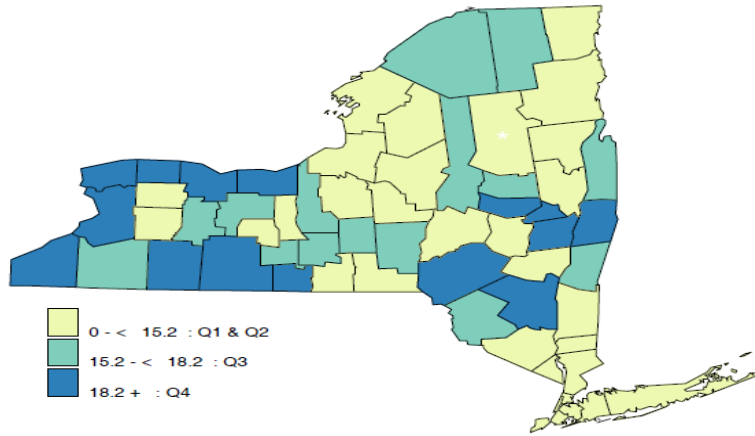


◆ Rensselaer ■ PA 2017

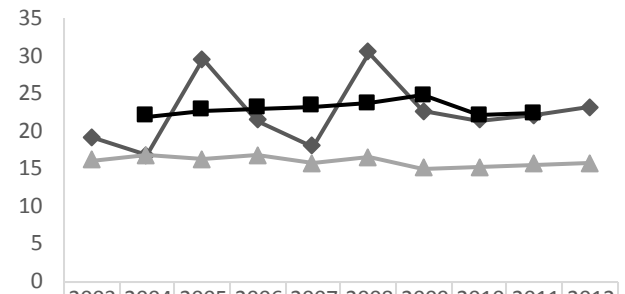


	2008-2010	2009-2011	2010-2012	2011-2013
◆ Rensselaer	6.1	6.4	6.7	7.5
■ PA 2017	4.9	4.9	4.9	4.9

Congestive Heart Failure Mortality Rate per 100,000 (2010-2012)



◆ Rensselaer-1 Yr Avg ■ Rensselaer Cnty-3 Yr Avg ▲ NYS exc. NYC



	2003	2004	2005	2006	2007	2008	2009	2010	2011	2012
◆ Rensselaer-1 Yr Avg	19.2	16.7	29.6	21.4	18	30.5	22.6	21.4	22.1	23.2
■ Rensselaer Cnty-3 Yr Avg		21.9	22.7	23	23.3	23.7	24.8	22.1	22.3	
▲ NYS exc. NYC	16.1	16.7	16.2	16.8	15.7	16.5	15	15.1	15.6	15.7

Reduce Smoking and Related Illness:

Indicator	Year(s)	Rensselaer County	Capital Region	NYS, except NYC	PA 2017 objective	County # change needed to reach PA objective
	For rate/ For #	Rate/% #	Rate/%	Rate/%	Rate/%	
Percentage of cigarette smoking among adults, age-adjusted <i>Number:</i>	2013-2014	24.8 29,431	19.7	18.0	15.0	-11,630
COPD/CLRD hospitalization rate per 10,000, age-adjusted <i>Number:</i>	2010-2012 2012	35.7 587	29.0	30.0		
COPD/CLRD mortality per 100,000, age-adjusted <i>Number:</i>	2010-2012 2012	54.6 109	45.6	37.3		
Percentage of adults with current asthma, age-adjusted <i>Number:</i>	2013-2014	13.5 17,588	11.7	10.5		
Asthma hospitalization rate per 10,000, age-adjusted <i>Number:</i>	2010-2012 2012	11.5 164	10.0	11.4		
Asthma ED visit rate per 10,000, <i>Number:</i>	2013	61.2 978	51.2	47.6	75.1	*
Asthma ED visit rate per 10,000, ages 0-4 yrs <i>Number:</i>	2013	199.7 173	139.4	115.2	196.5	-3

Asthma hospitalizations per 10,000 by age group (years)					Asthma ED visit rate per 10,000 by age group (years)				
Age group (years)	Year(s)	Rensselaer County	6-county Region	NYS, excluding NYC	Age group (years)	Year(s)	Rensselaer County	6-county Region	NYS, excluding NYC
	For Rate/ % For #	Rate / % #	Rate/ %	Rate / %		For Rate / % For #	Rate / % #	Rate / %	Rate / %
0-17	2010-2012 2012	14.2 49	12.4	14.5	0-17	2010-2012 2012	102.8 364	83.9	78.1
18-64	2010-2012 2012	8.8 87	8.3	9.0	18-64	2010-2012 2012	57.1 621	52.7	47.7
65+	2010-2012 2012	18.0 28	13.9	19.2	65+	2010-2012 2012	18.4 36	15.1	19.1

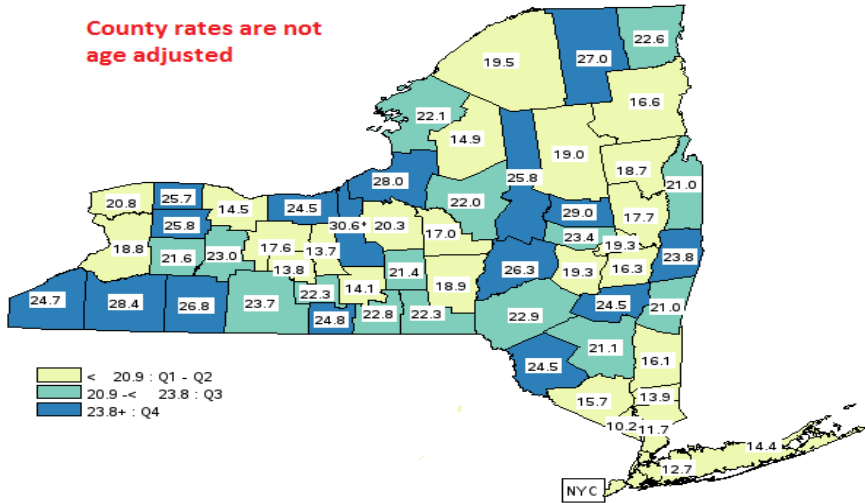
PA, Prevention Agenda

*=PA objective reached

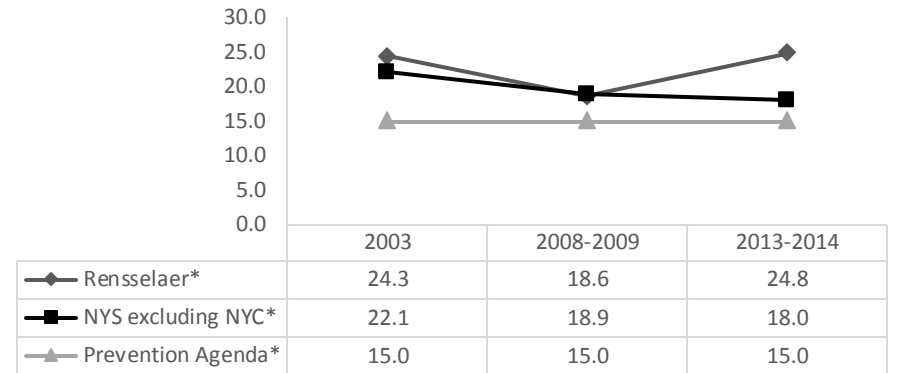
■ =Ranked in 3rd Quartile among all counties of NYS; ■ =Ranked in 4th Quartile among all counties of NY

Percentage of cigarette smoking among adults, 2013-2014

County rates are not age adjusted

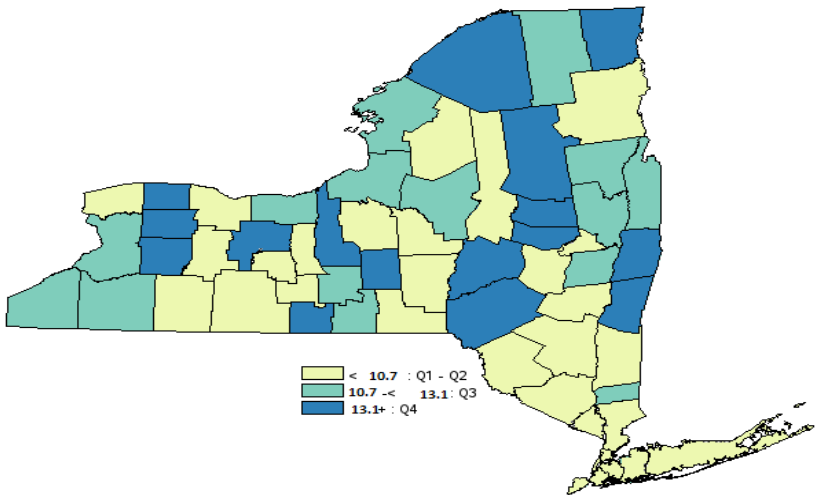


◆ Rensselaer* ■ NYS excluding NYC* ▲ Prevention Agenda*

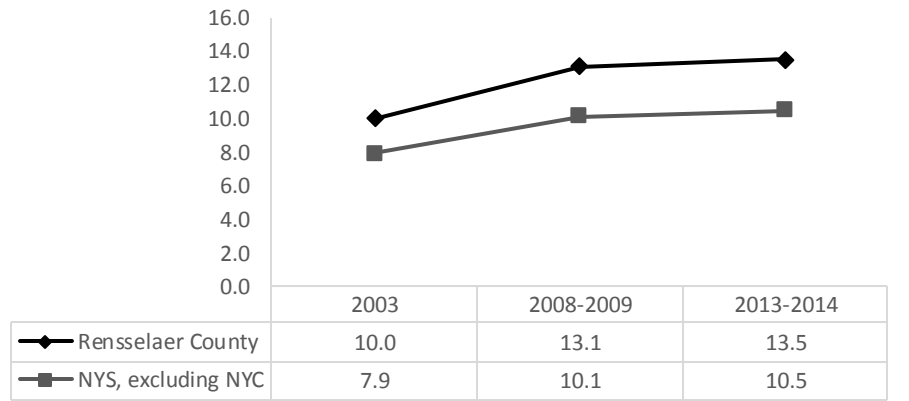


*Rates are age-adjusted

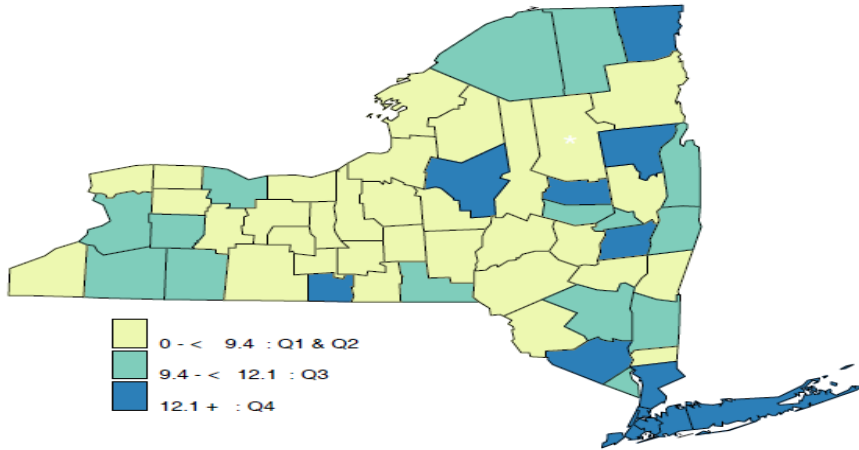
Adults with current Asthma (2013-2014)



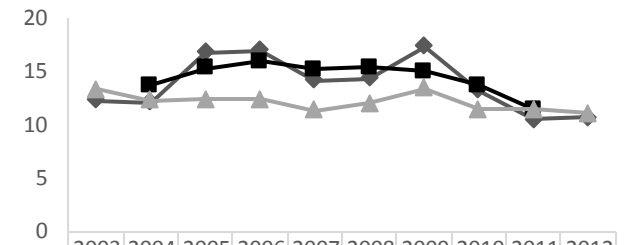
◆ Rensselaer County ■ NYS, excluding NYC



Asthma Hospitalization Rate per 10,000 (2010-2012)



◆ Rensselaer Cnty-1 Yr
 ■ Rensselaer Cnty-3 Yr Avg
 ▲ NYS exc. NYC

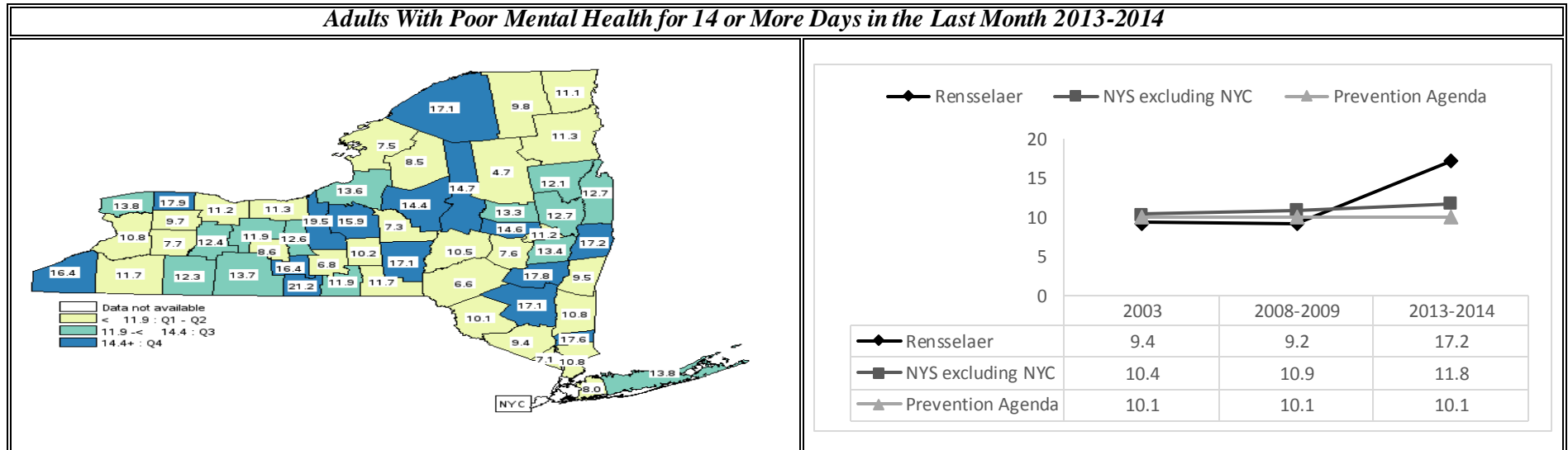


	2003	2004	2005	2006	2007	2008	2009	2010	2011	2012
◆ Rensselaer Cnty-1 Yr	12.3	12.1	16.8	17	14.2	14.4	17.4	13.2	10.5	10.7
■ Rensselaer Cnty-3 Yr Avg		13.7	15.3	16	15.2	15.4	15	13.7	11.5	
▲ NYS exc. NYC	13.3	12.3	12.4	12.4	11.4	12	13.4	11.5	11.5	11.1

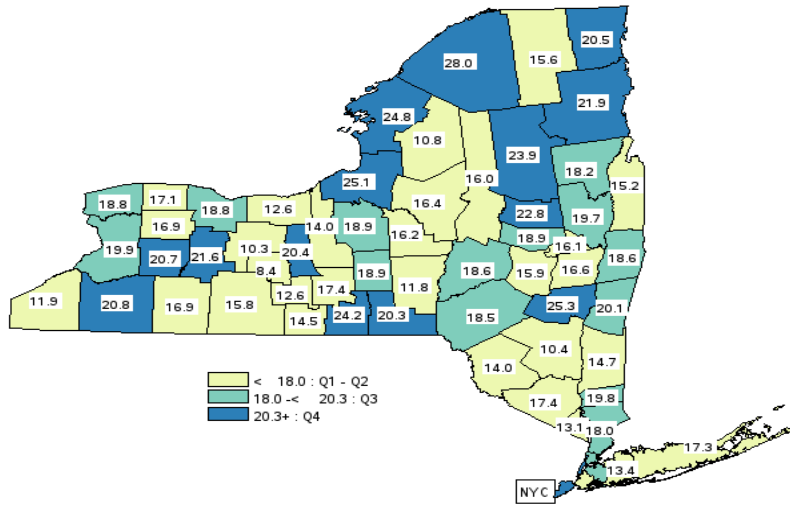
Mental Health Promotion/Substance Abuse Prevention- Prescription Drug Use among Adolescents

Indicator	Year(s)	Rensselaer County	Capital Region	NYS, except NYC	PA 2017 Objective	County # change needed to reach PA Objective
	For rate/% For #	Rate/% #	Rate/%	Rate/%	Rate/%	
Adults with poor mental health for 14 or more days in the last month, age adjusted <i>Number:</i>	2013-2014	17.2 17,972	13.5	11.8	10.1	-7,419
Age-adjusted suicide death rate per 100,000 <i>Average Annual Number:</i>	2011-2013 2013	9.8 16	10.8	8.0	5.9	-6
Self-inflicted injury hospitalizations per 10,000 , age adjusted <i>Number:</i>	2010-2012 2012	8.5 123	8.1	6.8		
Drug-related hospitalization rate per 10,000, age-adjusted <i>Number:</i>	2010-2012 2012	20.1 285	18.4	21.5		
Adult binge drinking during the past month, age adjusted <i>Number:</i>	2013-2014	18.6 19,435	18.3	17.4	18.4	-209

PA, Prevention Agenda *=PA objective reached =Ranked in 3rd Quartile among all counties of NYS; =Ranked in 4th Quartile among all counties of NY



Age-adjusted percentage of adult binge drinking during the past month, 2013-2014

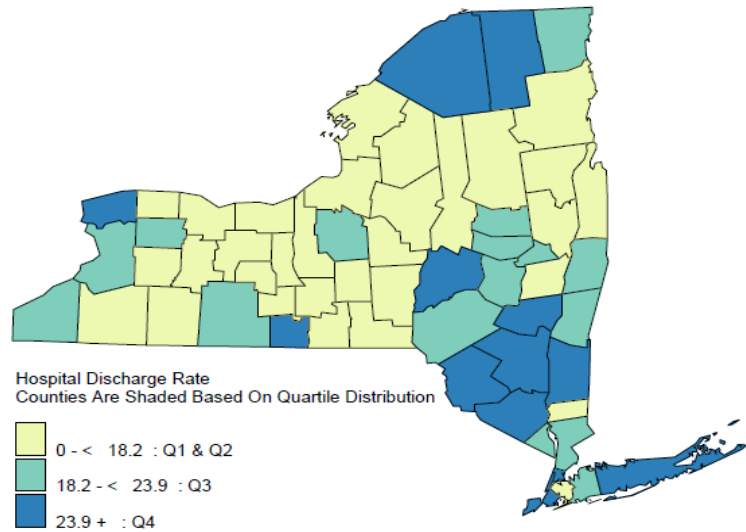


◆ Rensselaer County ■ NYS excluding NYC ▲ Prevention Agenda



	2003	2008-2009	2013-2014
◆ Rensselaer County	16.8	18.7	18.6
■ NYS excluding NYC	15.2	19.8	17.4
▲ Prevention Agenda	18.4	18.4	18.4

Drug-related hospitalization rate per 10,000, age-adjusted (2010-2012)

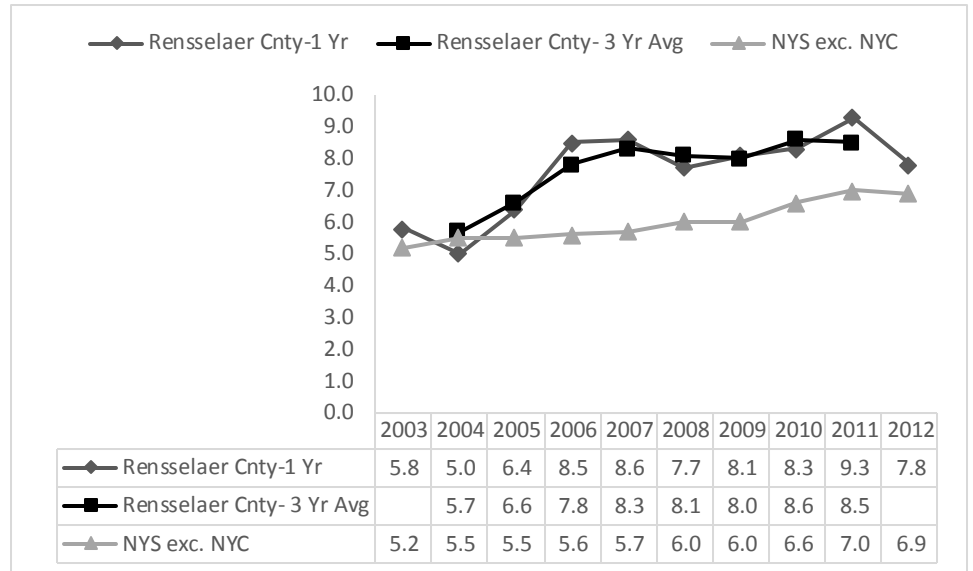
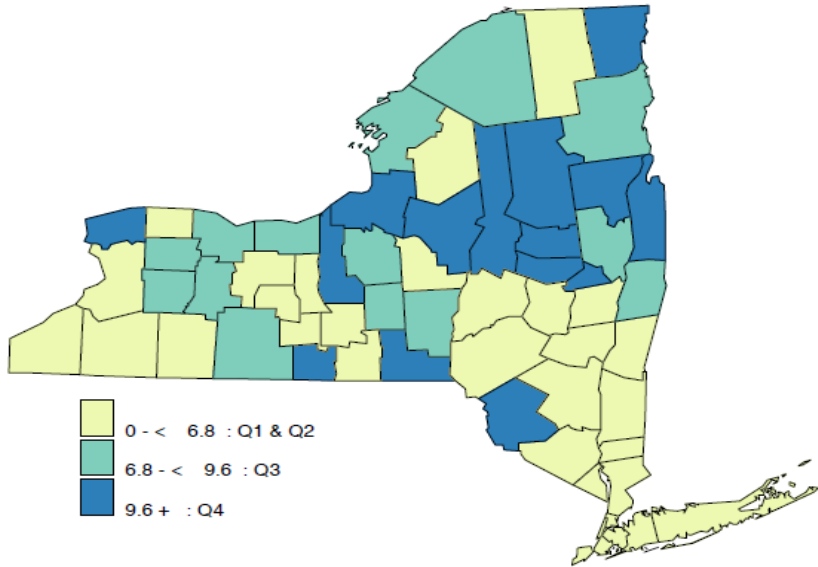


◆ Rensselaer Cnty-1 Yr ■ Rensselaer Cnty-3 Yr Avg ▲ NYS exc. NYC



	2003	2004	2005	2006	2007	2008	2009	2010	2011	2012
◆ Rensselaer Cnty-1 Yr	15.5	18	17.2	15.5	17.7	20.2	23.4	23.9	18	18.4
■ Rensselaer Cnty-3 Yr Avg		16.9	16.8	16.8	17.8	20.4	22.4	21.7	20.1	
▲ NYS exc. NYC	19.6	20.3	20.5	21.2	20.8	21.3	22.5	21.7	21.3	21.6

Self-inflicted injury hospitalization per 10,000 (2010-2012)

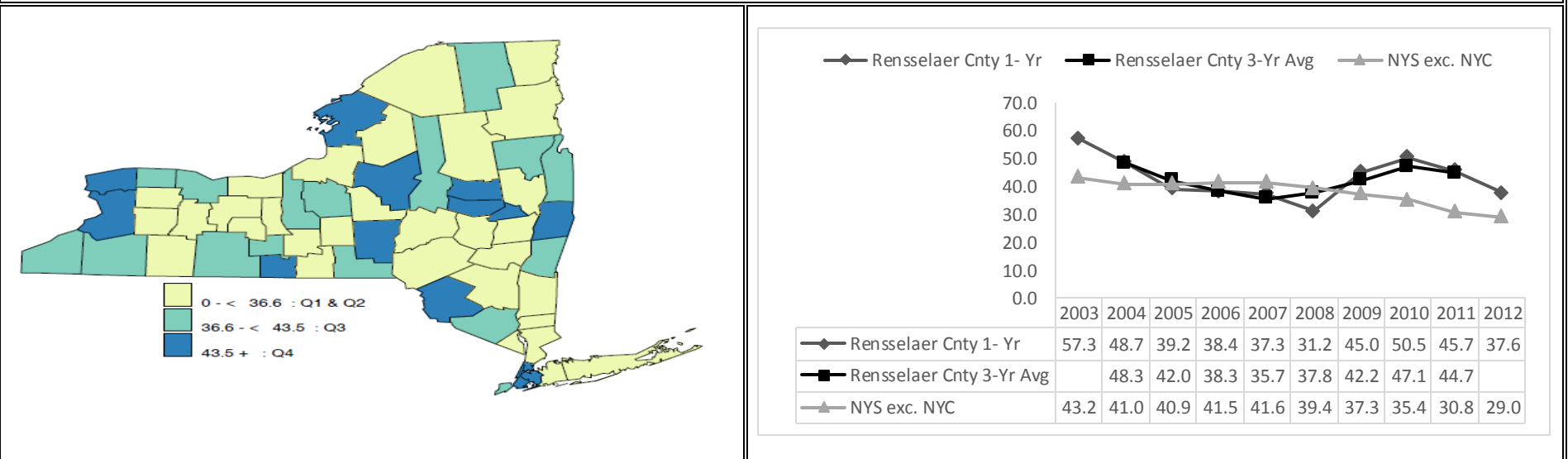


Risky Sexual Behaviors in Teens:

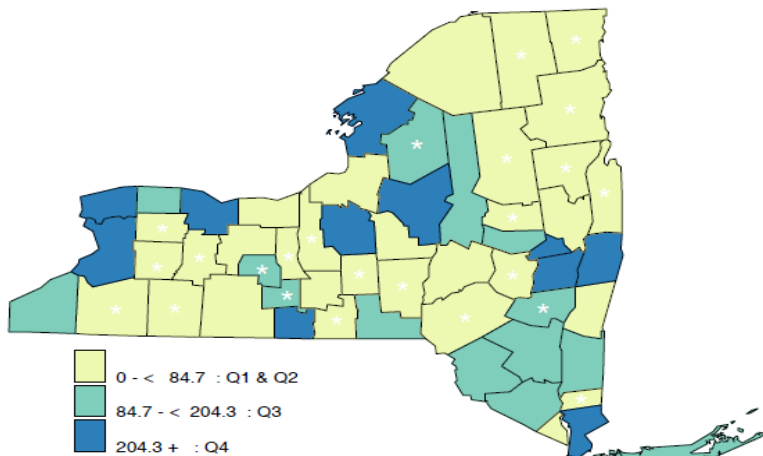
Indicator	Year (s)	Rensselaer County	Capital Region	NYS, except NYC	PA 2017 Objective	County # change needed to reach PA Objective
	For rate/% For #	Rate/% #	Rate/%	Rate/%	Rate/%	
Teen Pregnancy rate per 1,000 females-ages 15-19 Yrs <i>Number</i>	2010-2012 2012	44.7 200	36.9	31.7		
Teen live birth rate per 1,000 females-ages 15-19 Yrs <i>Number</i>	2010-2012 2012	25.2 114	19.4	18.6		
Gonorrhea case rate per 100,000-ages 15-19 Yrs <i>Number</i>	2010-2012 2012	213.9 18	233.1	212.9		
Chlamydia case rate per 100,000 males- ages 15-19 Yrs <i>Number</i>	2010-2012 2012	580.7 36	690.8	624.1		
Chlamydia case rate per 100,000 females- ages 15-19 Yrs <i>Number</i>	2010-2012 2012	2769.6 148	2653.8	2452.9		

PA, Prevention Agenda *=PA objective reached =Ranked in 3rd Quartile among all counties of NYS; =Ranked in 4th Quartile among all counties of NY

Teen pregnancy per 1,000 females (2010-2012)

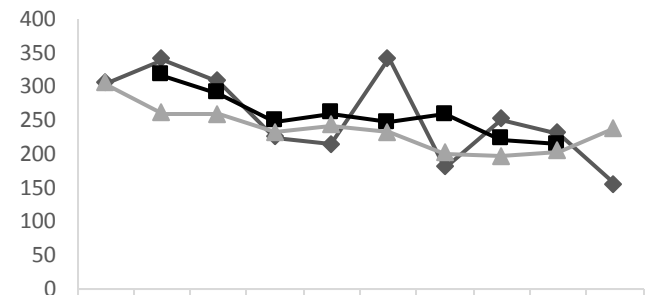


Gonorrhea case rate per 100,000, 15-19 Yrs (2010-2012)



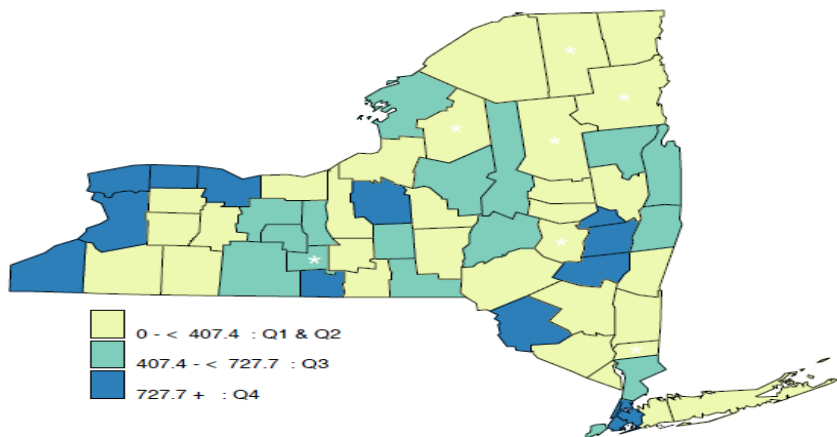
(* Fewer than 10 events in the numerator, therefore the rate is unstable)

◆ Rensselaer Cnty-1 Yr
 ■ Rensselaer Cnty-3 Yr Avg
 ▲ NYS exc. NYC

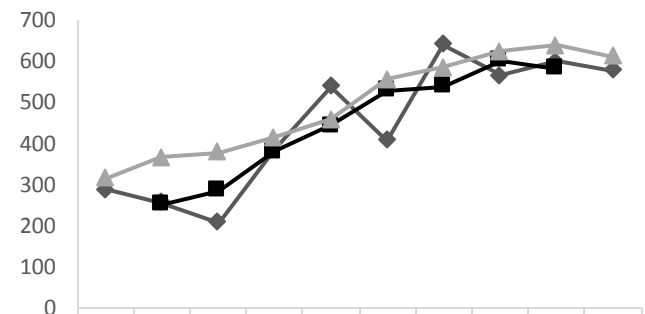


	2003	2004	2005	2006	2007	2008	2009	2010	2011	2012
◆ Rensselaer Cnty-1 Yr	304.8	340.7	307.6	224.6	214.6	342.8	181.2	252.4	230.7	155.9
■ Rensselaer Cnty-3 Yr Avg		317.6	290	248.3	260.4	246.7	259.5	222	213.9	
▲ NYS exc. NYC	305.5	260.4	259	231.7	242.7	232.1	201.5	196.9	203.8	238.1

Chlamydia case rate per 100,000 males- ages 15-19 Yrs

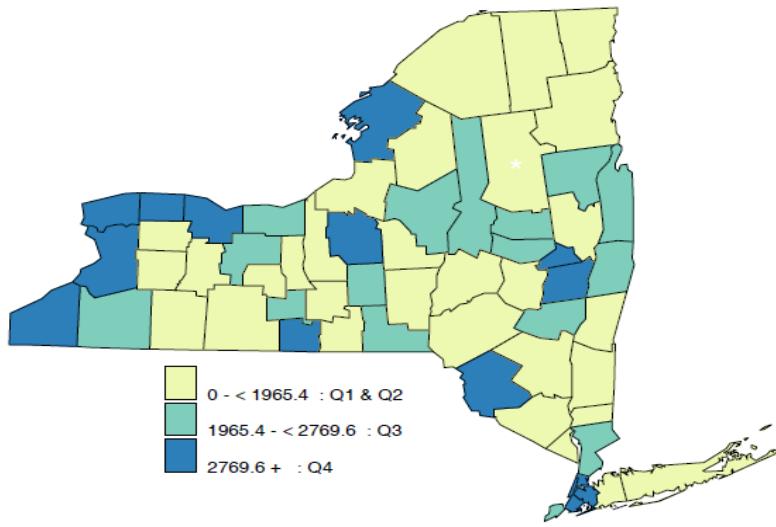


(* Fewer than 10 events in the numerator, therefore the rate is unstable)

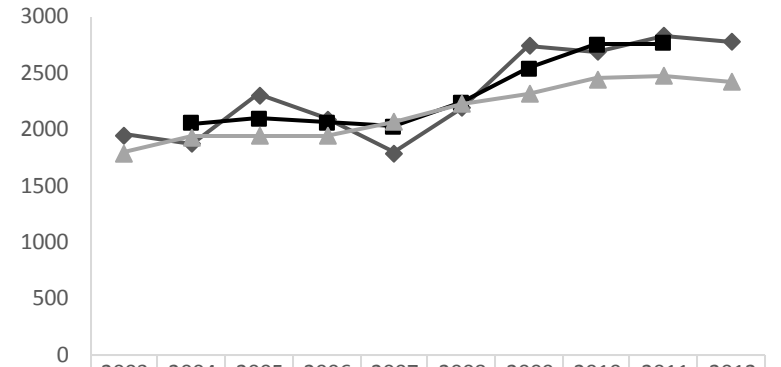


	2003	2004	2005	2006	2007	2008	2009	2010	2011	2012
◆ Rensselaer Cnty-1 Yr	288.8	256.9	206.4	387.4	539	405.6	641	565.6	599.5	577.9
■ Rensselaer Cnty-3 Yr Avg		250.5	284.5	379.3	444.3	527.6	537	601.2	580.7	
▲ NYS exc. NYC	314	365.4	378.4	414.7	458.7	554.8	583.5	623.3	637	612

Chlamydia case rate per 100,000 females- ages 15-19 Yrs



◆ Rensselaer Cnty-1 Yr ■ Rensselaer Cnty 3-Yr Avg ▲ NYS exc. NYC



	2003	2004	2005	2006	2007	2008	2009	2010	2011	2012
◆ Rensselaer Cnty-1 Yr	1961.2	1878.1	2313.1	2100.9	1796.2	2197.4	2746.6	2695.9	2832.7	2782.5
■ Rensselaer Cnty 3-Yr Avg		2053.8	2099.9	2066.8	2030.7	2238.8	2544.5	2757.8	2769.6	
▲ NYS exc. NYC	1797.4	1942.8	1949.4	1944.7	2076.5	2234.2	2320.1	2452.4	2482.6	2423.6