

7/22/2015

Albany County Health Profile

Prepared By:



www.hcdiny.org

General Health:

Indicator	Year(s)	Albany County	Capital Region	NYS, except NYC	PA 2017 Objective	County # change needed to reach PA Objective
	For rate/% For #	Rate/% #	Rate/%	Rate/%	Rate/%	
Total mortality rate per 100,000, age-adjusted <i>Number:</i>	2010-2012 2012	710.1 2,714	712.0	681.1		
Percentage of premature deaths (<65 years) <i>Number:</i>	2013	21.6 565	22.4	21.8	21.8	*
Years of Potential Life Lost (YPLL) per 100,000	2010-2012	5,940.4	5,966.4	5,828.4		
Rate of preventable hospitalizations- ages 18+ yrs, age-adjusted <i>Number:</i>	2013	105.8 2,840	103.6	113.2	133.3	*
Total ED visit rate per 10,000, age-adjusted <i>Number:</i>	2010-2012 2012	3,595.7 88,442	3,573.5	3,668.9		
Percentage of adults with health insurance- ages 18-64 yrs <i>Number w/o health insurance:</i>	2013	89.5 23,233	89.0	NA	100.0	-23,233
Percentage of adults with a regular health care provider-ages 18+ yrs, age-adjusted <i>Number w/o regular health care provider:</i>	2013-2014	86.8 33,052	85.9	84.6	90.8	-10,016
Percentage of adults not receiving regular care due to cost, age-adjusted <i>Number:</i>	2013-2014	11.2 24,936	10.8	12.0		

PA, Prevention Agenda

*=PA objective reached

 =Rate ranked in 3rd Quartile among all counties of NYS

Five Leading Causes of Death & Premature Death (Before age 75), rates per 100,000 and counts :

Rank	Leading Causes of Death (2012)				Leading Causes of Premature Death (2010-2012)			
	Albany County Total Deaths: 2,714		NYS, excluding NYC Total Deaths: 96,428		Albany County Average # in 1 year: 972		NYS, excluding NYC Average # in 1 Year: 35,523	
	Cause	Rate* Number	Cause	Rate*	Cause	Rate* Avg. Number	Cause	Rate*
#1	Heart disease	176 703	Heart disease	182	Cancer	306 326	Cancer	295
#2	Cancer	177 658	Cancer	165	Heart disease	212 190	Heart disease	178
#3	CLRD	40 151	CLRD	38	Unintentional Injury	50 46	Unintentional Injury	72
#4	Stroke	28 108	Stroke	30	CLRD	49 45	CLRD	38
#5	Unintentional Injury	25 89	Unintentional Injury	31	Suicide	33 26	Stroke	26

CLRD, Chronic Lower Respiratory Disease, *Rates are age adjusted

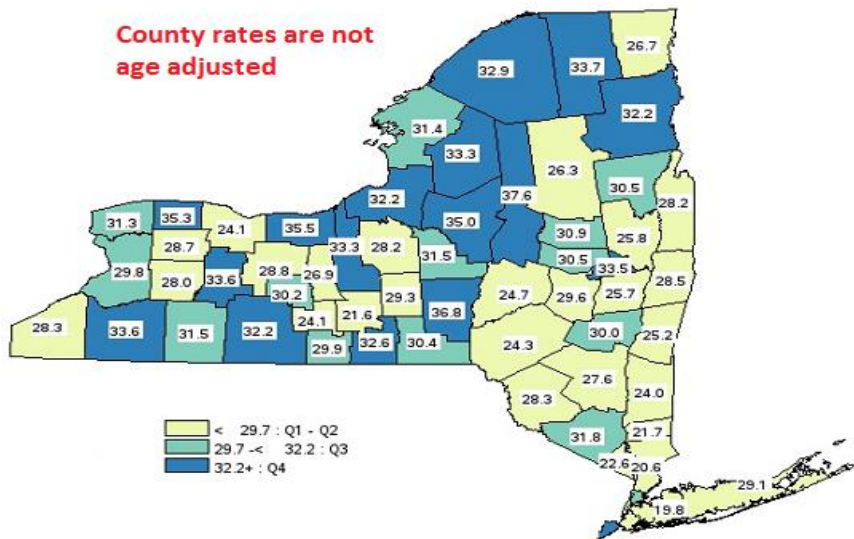
Reduce Obesity in Children and Adults:

Indicator	Year(s)	Albany County	Capital Region	NYS, except NYC	PA 2017 Objective	County # change needed to reach PA Objective
	For rate/% For #	Rate/% #	Rate/%	Rate/%	Rate/%	
Percentage of adults who are obese, age-adjusted <i>Number:</i>	2013-2014	26.0 58,038	27.8	27.0	23.2	-6,250
Percentage of children & adolescents who are obese <i>Number:</i>	2010-2012	17.9 7,954	17.4	17.6	16.7	-533
Percentage of adults not engaged in some type of leisure time physical activity , age adjusted <i>Number:</i>	2013-2014	21.7 50,639	23.4	26.2		
Percent diabetes prevalence in adults, age adjusted <i>Number:</i>	2013-2014	8.8 23,281	8.7	8.2		
Diabetes (primary diagnosis) hospitalization rate per 10,000, age-adjusted <i>Number:</i>	2010-2012 2012	14.2 416	12.5	14.4		
Hospitalization rate for short-term complications of diabetes per 10,000- age 18+ yrs <i>Average Annual Number:</i>	2011-2013	6.6 162	6.2	5.8	4.9	-42
Coronary heart disease mortality rate per 100,000, age-adjusted <i>Number:</i>	2010-2012 2012	115.7 453	124.5	135.8		
Coronary heart disease hospitalization rate per 10,000, age-adjusted <i>Number:</i>	2010-2012 2012	20.3 660	24.7	36.0		
Congestive heart failure mortality rate per 100,000, age-adjusted <i>Number:</i>	2010-2012 2012	20.0 66	18.0	15.5		
Congestive heart failure hospitalization rate per 10,000, age-adjusted <i>Number:</i>	2010-2012 2012	20.4 748	21.3	24.3		
Cerebrovascular disease (stroke) mortality rate per 100,000, age-adjusted <i>Number:</i>	2010-2012 2012	30.5 108	32.3	31.0		
Cerebrovascular disease (stroke) hospitalization rate per 10,000, age-adjusted <i>Number:</i>	2010-2012 2012	22.1 736	22.5	24.4		
Heart attack mortality rate per 100,000, age-adjusted <i>Number:</i>	2010-2012 2012	26.2 115	28.2	35.6		
Heart attack hospitalization rate per 10,000 , age adjusted <i>Number:</i>	2013	11.0 405	13.2	15.2	14.0	*

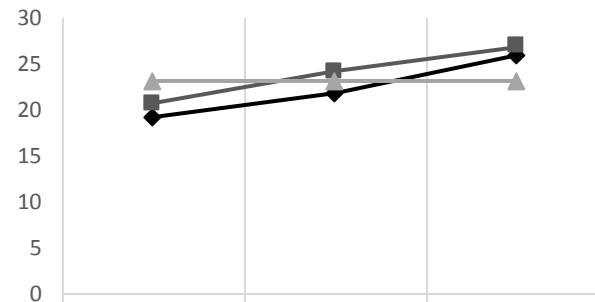
PA, Prevention Agenda * = PA objective reached = Rate ranked in 3rd Quartile among all counties of NYS = Ranked in 4th Quartile among all counties of NY

Percentage of Adults Who are Obese (2013-2014)

County rates are not age adjusted



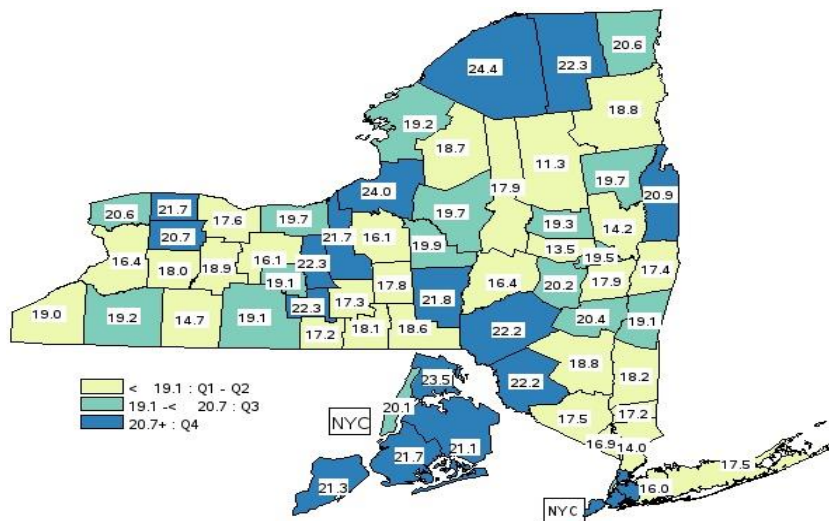
Albany* NYS excluding NYC* Prevention Agenda*



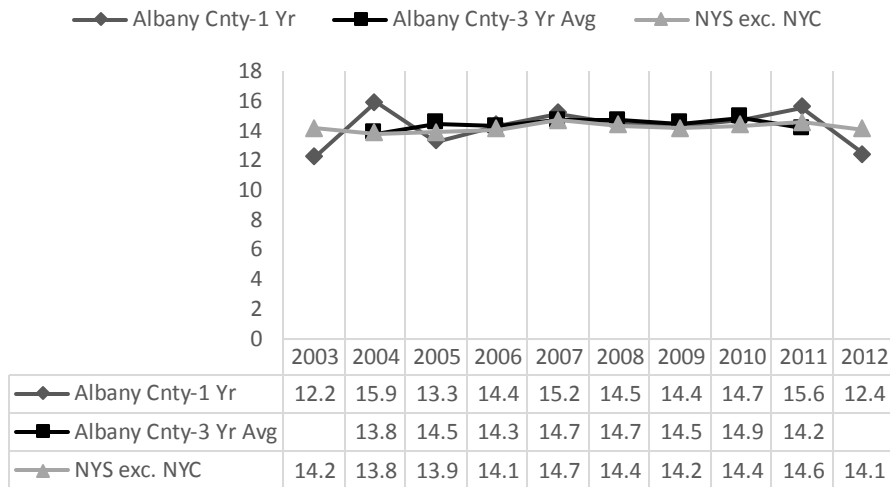
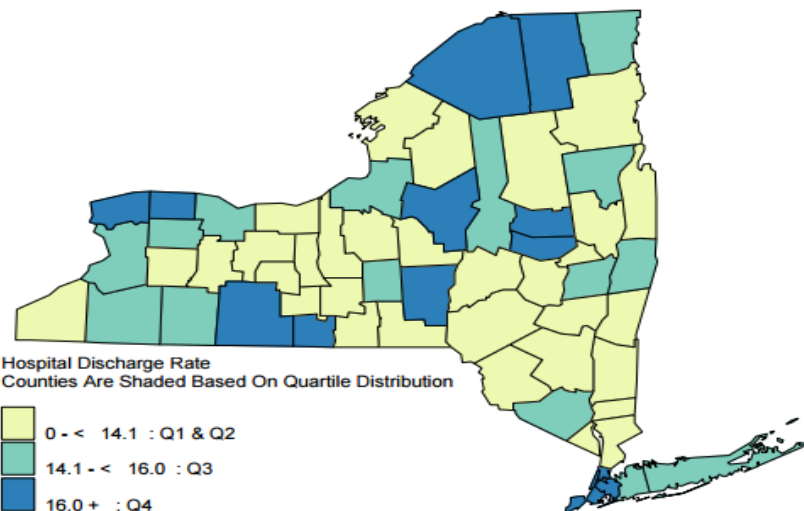
	2003	2008-2009	2013-2014
Albany*	19.2	21.9	26.0
NYS excluding NYC*	20.8	24.3	27.0
Prevention Agenda*	23.2	23.2	23.2

*Rates are age adjusted

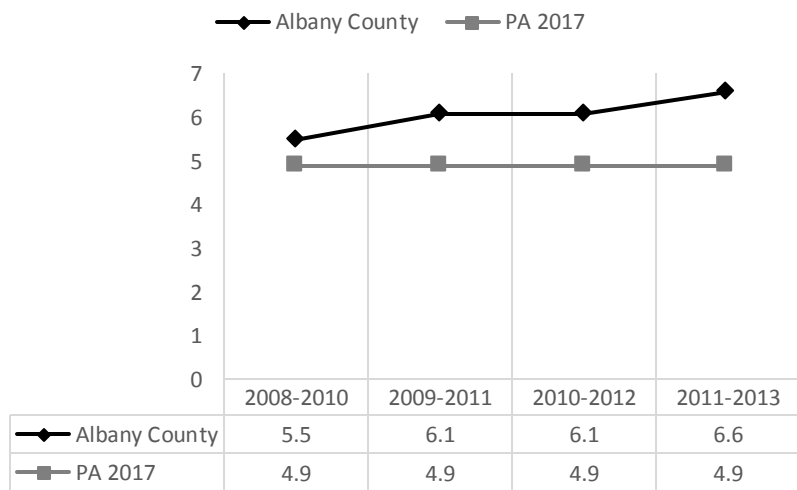
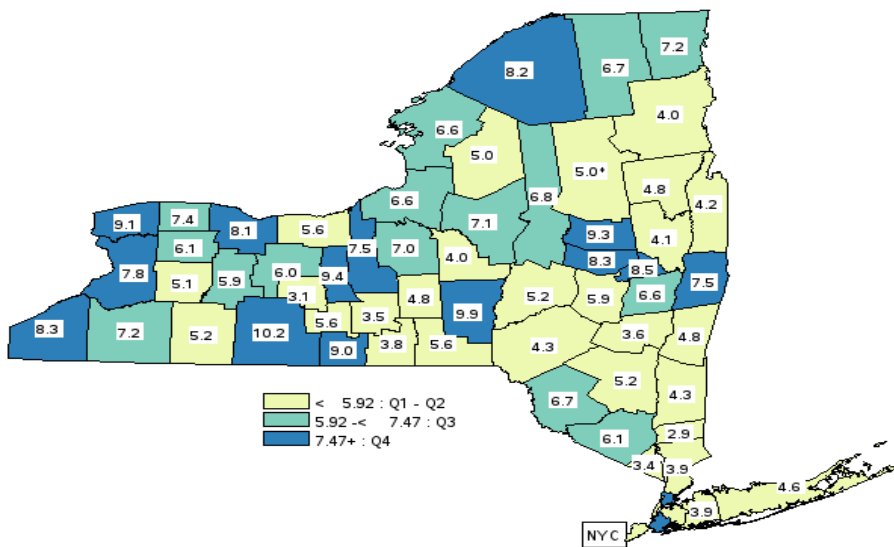
Percentage of Children and Adolescents Who are Obese (2010-2012)



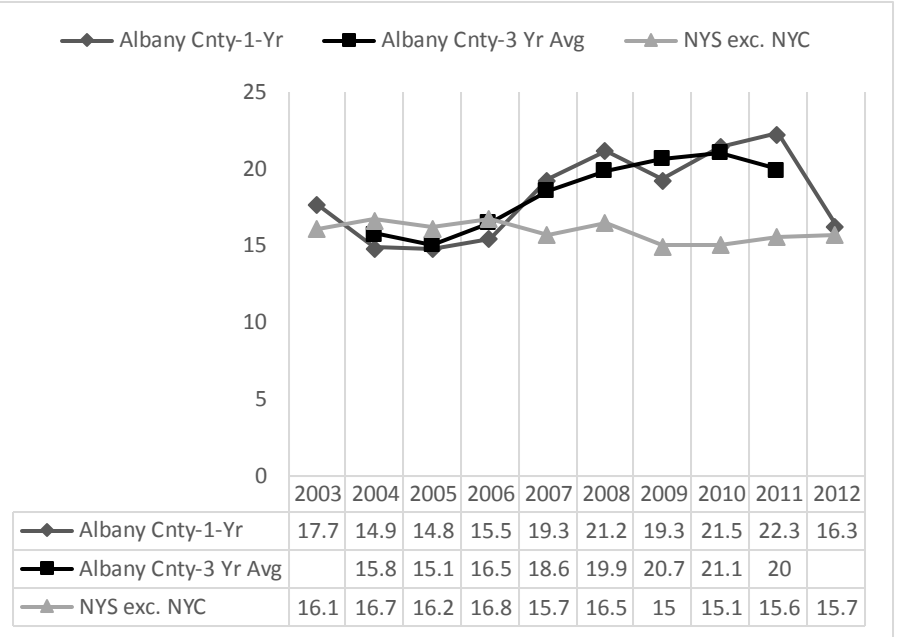
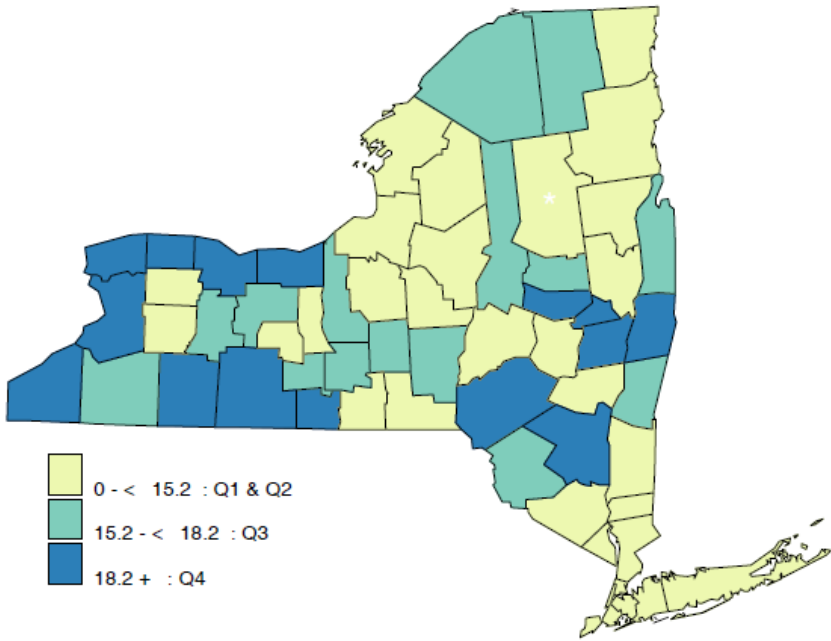
Diabetes (primary diagnosis) Hospitalizations per 10,000 (2010-2012)



Hospitalizations For Short Term Complications of Diabetes per 10,000 aged 18+(2011-2013)



Congestive Heart Failure Mortality Rate per 100,000 (2010-2012)



Reduce Smoking and Related Illness:

Indicator	Year(s)	Albany County	Capital Region	NYS, except NYC	PA 2017 objective	County # change needed to reach PA objective
	For rate/% For #	Rate/% #	Rate/%	Rate/%	Rate/%	
Percentage of cigarette smoking among adults, age-adjusted <i>Number:</i>	2013-2014	16.2 39,049	19.7	18.0	15.0	-2,893
COPD/CLRD hospitalization rate per 10,000, age-adjusted <i>Number:</i>	2010-2012 2012	30.5 962	29.0	30.0		
COPD/CLRD mortality per 100,000, age-adjusted <i>Number:</i>	2010-2012 2012	38.9 151	45.6	37.3		
Percentage of adults with current asthma, age-adjusted <i>Number:</i>	2013-2014	11.1 25,470	11.7	10.5		
Asthma hospitalization rate per 10,000, age-adjusted <i>Number:</i>	2010-2012 2012	12.3 348	10.0	11.4		
Asthma ED visit rate per 10,000 <i>Number:</i>	2013	64.1 1,968	51.2	47.6	75.1	*
Asthma ED visit rate per 10,000, ages 0-4 yrs <i>Number:</i>	2013	184.3 282	139.4	115.2	196.5	*

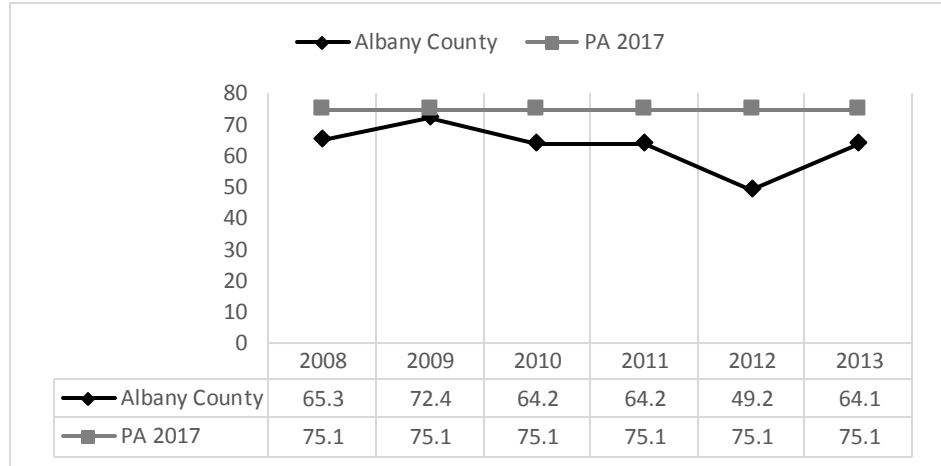
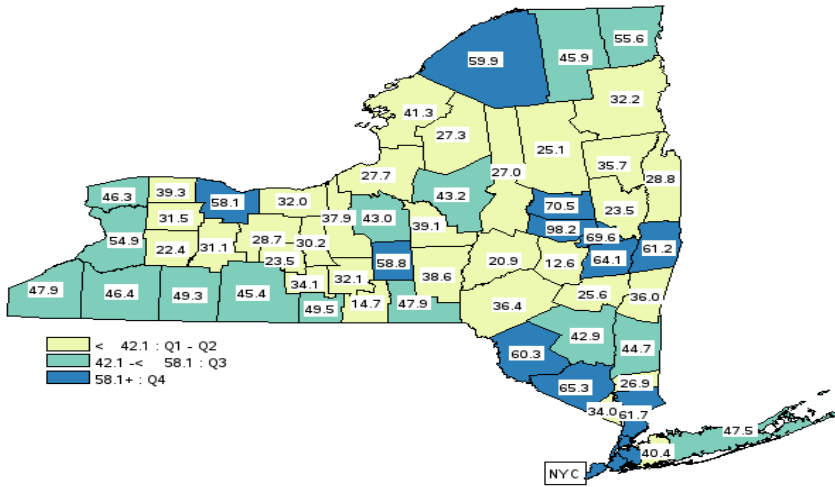
Asthma hospitalizations per 10,000 by age group (years)					Asthma ED visit rate per 10,000 by age group (years)				
Age group (years)	Year(s)	Albany County	6-county Region	NYS, excluding NYC	Age group (years)	Year(s)	Albany County	6-county Region	NYS, excluding NYC
	For Rate/ % For #	Rate / % #	Rate/ %	Rate / %		For Rate / % For #	Rate / % #	Rate / %	Rate / %
0-17	2010-2012 2012	14.5 89	12.4	14.5	0-17	2010-2012 2012	107.4 667	83.9	78.1
18-64	2010-2012 2012	9.6 183	8.3	9.0	18-64	2010-2012 2012	63.4 1,346	52.7	47.7
65+	2010-2012 2012	20.0 76	13.9	19.2	65+	2010-2012 2012	18.0 74	15.1	19.1

PA, Prevention Agenda

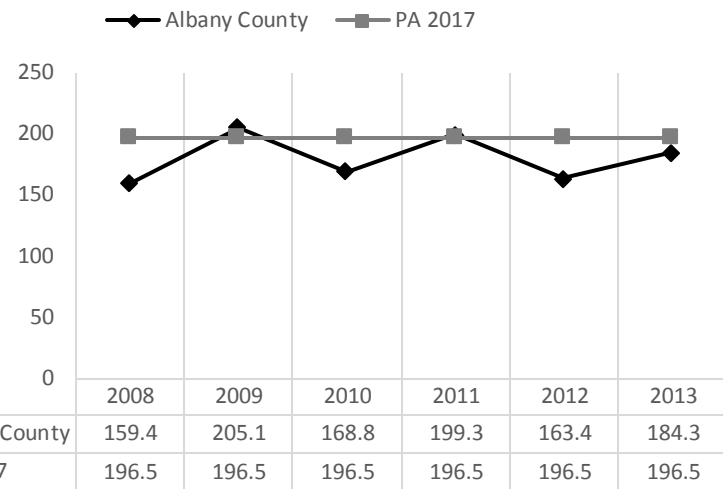
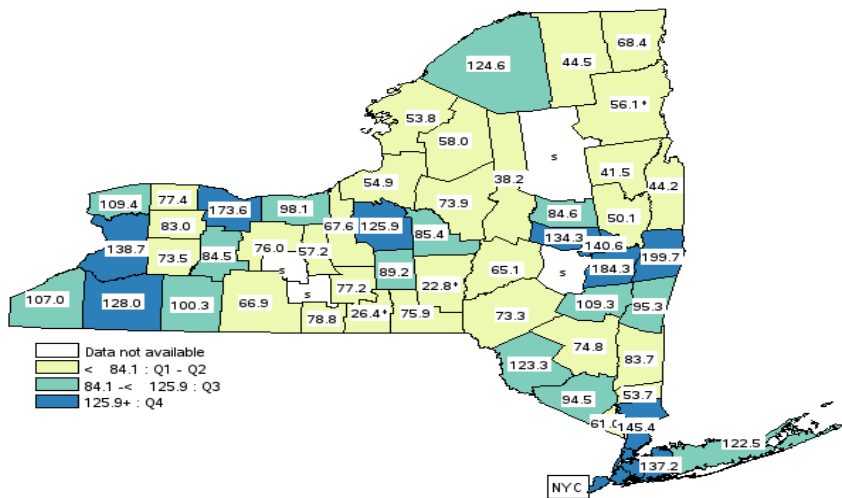
*=PA objective reached

■ =Ranked in 3rd Quartile among all counties of NYS; ■ =Ranked in 4th Quartile among all counties of NY

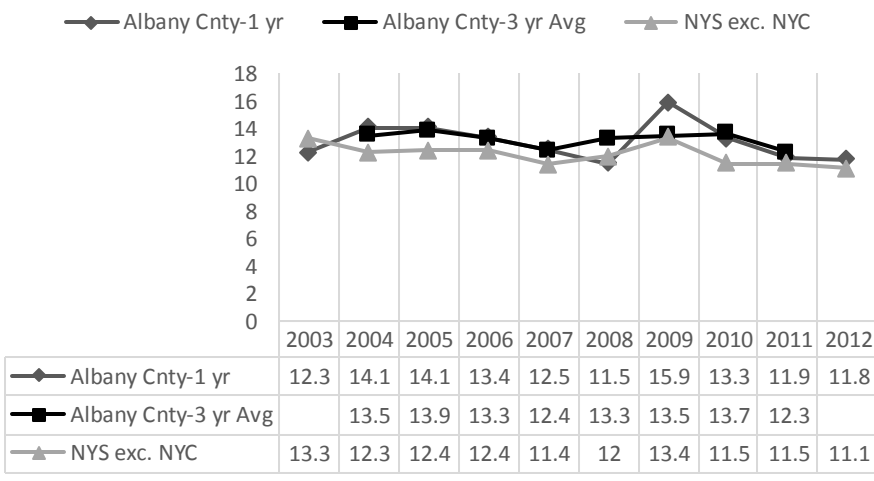
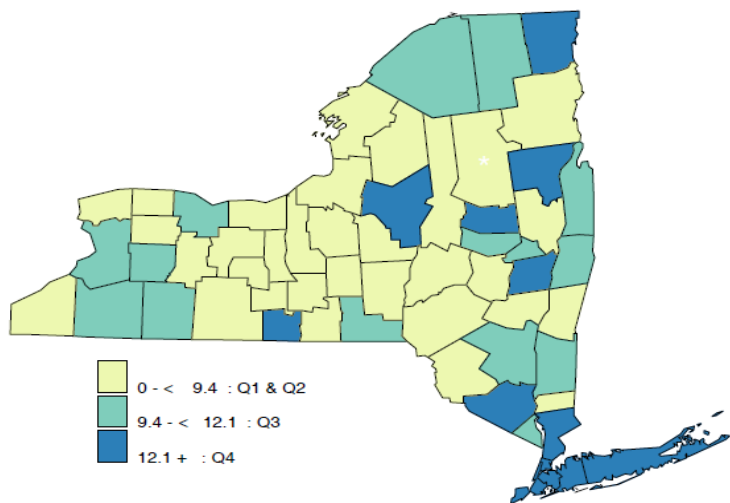
Asthma Emergency Department Visit Rate per 10,000 (2013)



Asthma Emergency Department Visit Rate per 10,000- Aged 0-4 years (2013)



Asthma Hospitalization Rate per 10,000 (2010-2012)



Mental Health Promotion/Substance Abuse Prevention- Prescription Drug Use among Adolescents

Indicator	Year(s)	Albany County	Capital Region	NYS, except NYC	PA 2017 Objective	County # change needed to reach PA Objective
	For rate/% For #	Rate/% #	Rate/%	Rate/%	Rate/%	
Adults with poor mental health for 14 or more days in the last month, age adjusted <i>Number:</i>	2013-2014	13.4 27,071	13.5	11.8	10.1	-6,667
Age-adjusted suicide death rate per 100,000 <i>Average Annual Number:</i>	2011-2013	9.7 31	10.8	8.0	5.9	-12
Self-inflicted injury hospitalizations per 10,000, age adjusted <i>Number:</i>	2010-2012 2012	6.8 207	8.1	6.8		
Drug-related hospitalization rate per 10,000, age-adjusted <i>Number:</i>	2010-2012 2012	17.7 439	18.4	21.5		
Adult binge drinking during the past month, age adjusted <i>Number:</i>	2013-2014	16.6 33,536	18.3	17.4	18.4	*

PA, Prevention Agenda *=PA objective reached =Ranked in 3rd Quartile among all counties of NYS; =Ranked in 4th Quartile among all counties of NY

Adults With Poor Mental Health for 14 or More Days in the Last Month (2013-2014)

