

7/22/2015

Columbia County Health Profile

Prepared By:



www.hcdiny.org

Columbia County

General Health:

Indicator	Year(s)	Columbia County	Capital Region	NYS, except NYC	PA 2017 Objective	County # change needed to reach PA Objective
	For rate/% For #	Rate/% #	Rate/%	Rate/%	Rate/%	
Total mortality rate per 100,000, age-adjusted <i>Number:</i>	2010-2012 2012	726.2 636	712.0	681.1		
Percentage of premature deaths (<65 years) <i>Number:</i>	2013	21.7 142	22.4	21.8	21.8	*
Years of Potential Life Lost (YPLL) per 100,000	2010-2012	6,577.3	5,966.4	5,828.4		
Rate of preventable hospitalizations- ages 18+ yrs, age-adjusted <i>Number:</i>	2013	102.0 678	103.6	113.2	133.3	*
Total ED visit rate per 10,000, age-adjusted <i>Number:</i>	2010-2012 2012	4,184.8 24,362	3,573.5	3,668.9		
Percentage of adults with health insurance- ages 18-64 yrs <i>Number w/o health insurance:</i>	2013	87.3 5,401	89.0		100.0	-5,401
Percentage of adults with a regular health care provider-ages 18+ yrs, age-adjusted <i>Number w/o regular health care provider:</i>	2013-2014	85.2 6,814	85.9	84.6	90.8	-2,578
Percentage of adults not receiving regular care due to cost, age-adjusted <i>Number:</i>	2013-2014	7.4 3,462	10.8	12.0		

PA, Prevention Agenda; *=PA objective reached

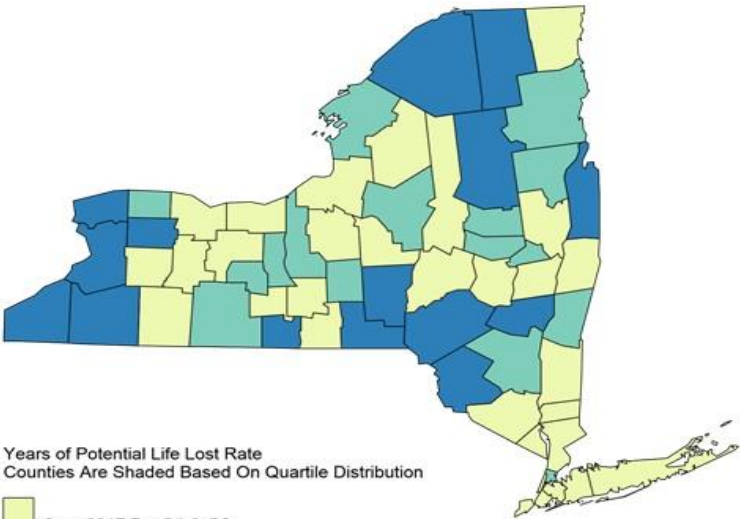
=Rate ranked in 3rd Quartile among all counties of NYS

Five Leading Causes of Death & Premature Death (Before age 75), Age-Adjusted Rates per 100,000 and Counts :

Rank	Leading Causes of Death (2012)				Leading Causes of Premature Death (2010-2012)			
	Columbia County Total Deaths: 635		NYS, excluding NYC Total Deaths: 96,428		Columbia County Average # in 1 year: 256		NYS, excluding NYC Average # in 1 Year: 35,523	
	Cause	Rate Number	Cause	Rate	Cause	Rate Avg. Number	Cause	Rate
#1	Heart disease	188 181	Heart disease	182	Cancer	573 92	Cancer	295
#2	Cancer	166 155	Cancer	165	Heart disease	285 49	Heart disease	178
#3	CLRD	43 42	CLRD	38	CLRD	101 14	Unintentional Injury	72
#4	Stroke	29 27	Stroke	30	Unintentional Injury	68 10	CLRD	38
#5	Unintentional Injury	32 21	Unintentional Injury	31	Stroke	45 7	Stroke	26

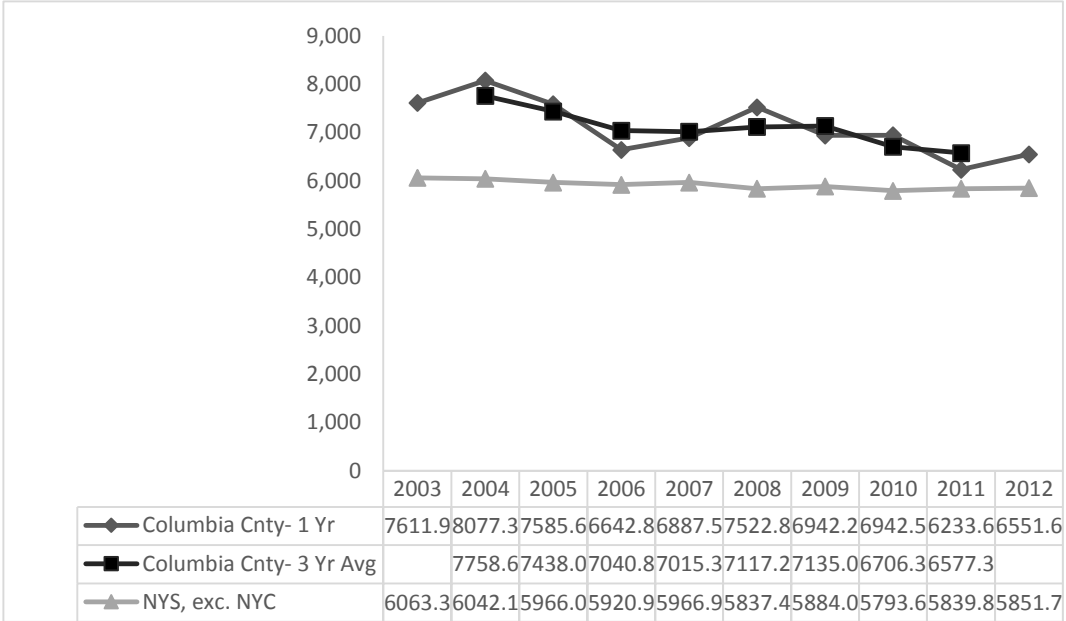
CLRD, Chronic Lower Respiratory Disease

Years of Potential Life Lost (YPLL) per 100,000 (2010-2012)



Years of Potential Life Lost Rate
Counties Are Shaded Based On Quartile Distribution

- 0 - < 6317.7 : Q1 & Q2
- 6317.7 - < 6769.6 : Q3
- 6769.6 + : Q4



Reduce Obesity in Children and Adults:

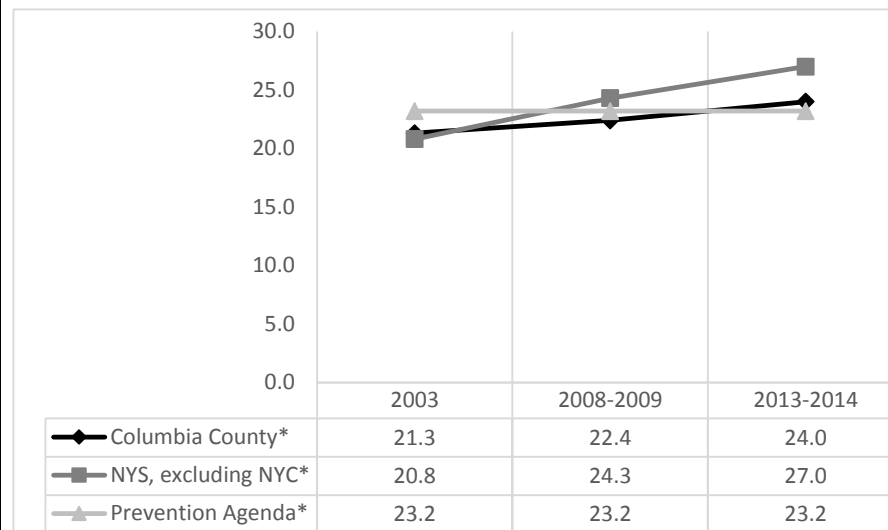
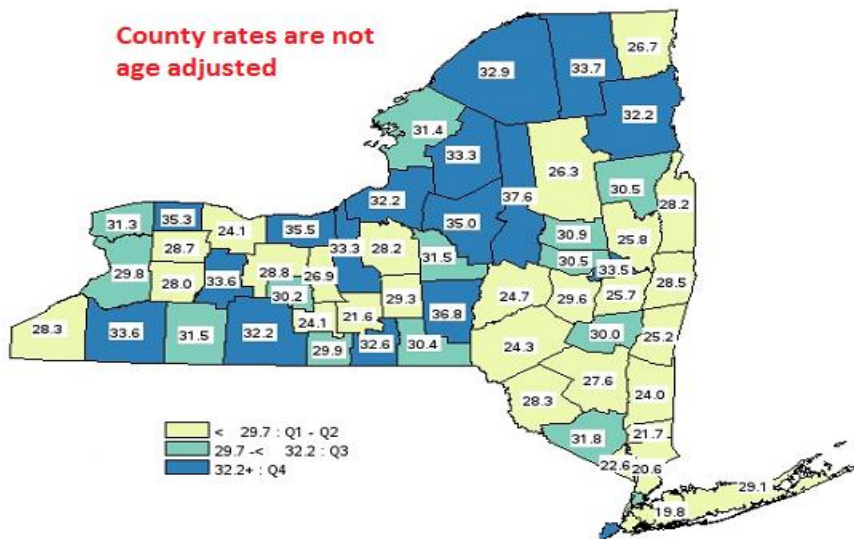
Indicator	Year(s)	Columbia County	Capital Region	NYS, except NYC	PA 2017 Objective	County # change needed to reach PA Objective
	For rate/% For #	Rate/% #	Rate/%	Rate/%	Rate/%	
Percentage of adults who are obese, age-adjusted <i>Number:</i>	2013-2014	24.0 11,996	27.8	27.0	23.2	-400
Percentage of children & adolescents who are obese <i>Number:</i>	2010-2012	19.1 1,797	17.4	17.6	16.7	-226
Percentage of adults not engaged in some type of leisure time physical activity, age-adjusted <i>Number:</i>	2013-2014	25.7 12,953	23.4	26.2		
Percent diabetes prevalence in adults, age-adjusted <i>Number:</i>	2013-2014	7.1 4,693	8.7	8.2		
Diabetes (primary diagnosis) hospitalization rate per 10,000, age-adjusted <i>Number:</i>	2010-2012 2012	12.4 93	12.5	14.4		
Hospitalization rate for short-term complications of diabetes per 10,000- age 18+ yrs <i>Average Annual Number:</i>	2011-2013	4.8 24	6.2	5.8	4.9	*
Cardiovascular disease mortality rate per 100,000, age-adjusted <i>Number:</i>	2010-2012 2012	252.5 226	234.5	233.6		
Cardiovascular disease hospitalization rate per 10,000, age-adjusted <i>Number:</i>	2010-2012 2012	111.5 985	121.4	143.5		
Coronary heart disease mortality rate per 100,000, age-adjusted <i>Number:</i>	2010-2012 2012	162.7 144	124.5	135.8		
Coronary heart disease hospitalization rate per 10,000, age-adjusted <i>Number:</i>	2010-2012 2012	24.1 190	24.7	36.0		
Congestive heart failure mortality rate per 100,000, age-adjusted <i>Number:</i>	2010-2012 2012	16.4 16	18.0	15.5		
Congestive heart failure hospitalization rate per 10,000, age-adjusted <i>Number:</i>	2010-2012 2012	17.7 164	21.3	24.3		
Cerebrovascular disease (stroke) mortality rate per 100,000, age-adjusted <i>Number:</i>	2010-2012 2012	29.0 27	32.3	31.0		
Cerebrovascular disease (stroke) hospitalization rate per 10,000, age-adjusted <i>Number:</i>	2010-2012 2012	20.4 196	22.5	24.4		
Heart attack mortality rate per 100,000, age-adjusted <i>Number:</i>	2010-2012 2012	25.6 24	28.2	35.6		
Heart attack hospitalization rate per 10,000 , age-adjusted <i>Number:</i>	2013	14.5 136	13.2	15.2	14.0	-5

PA, Prevention Agenda; *=PA objective reached

■ =Rate ranked in 3rd Quartile among all counties of NYS; ■ =Ranked in 4th Quartile among all counties of NYS

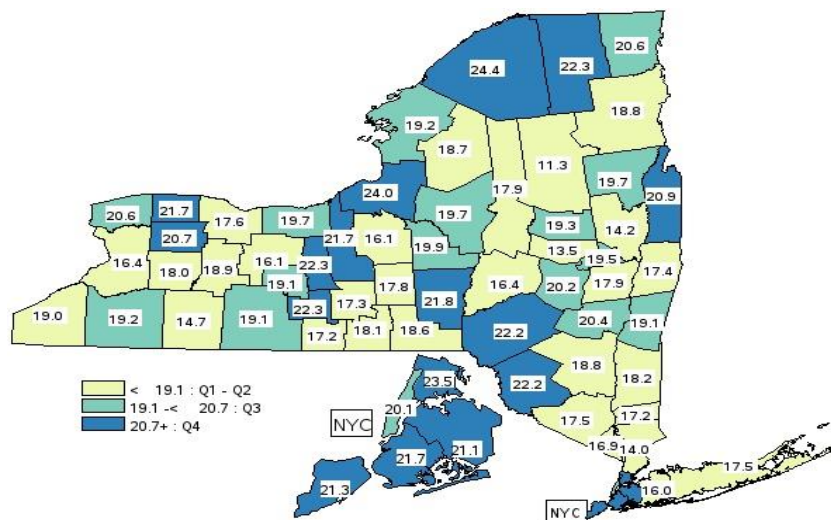
Percentage of Adults who are Obese (2013-2014)

County rates are not age adjusted

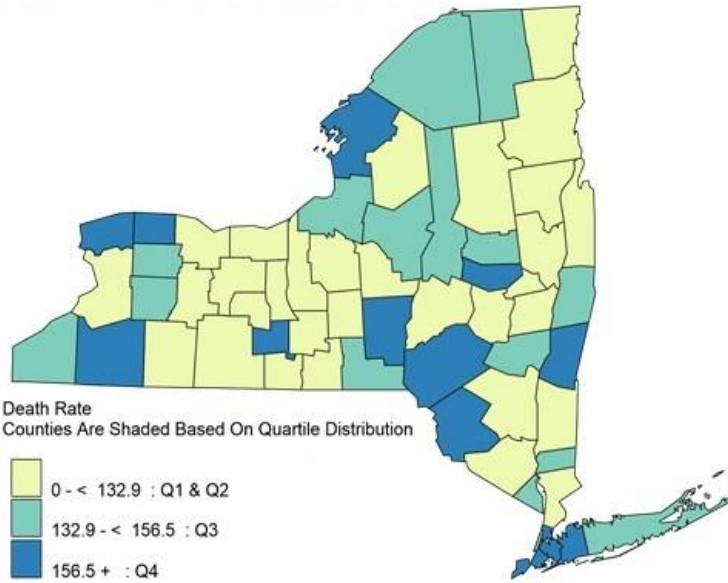


*Rates are age adjusted

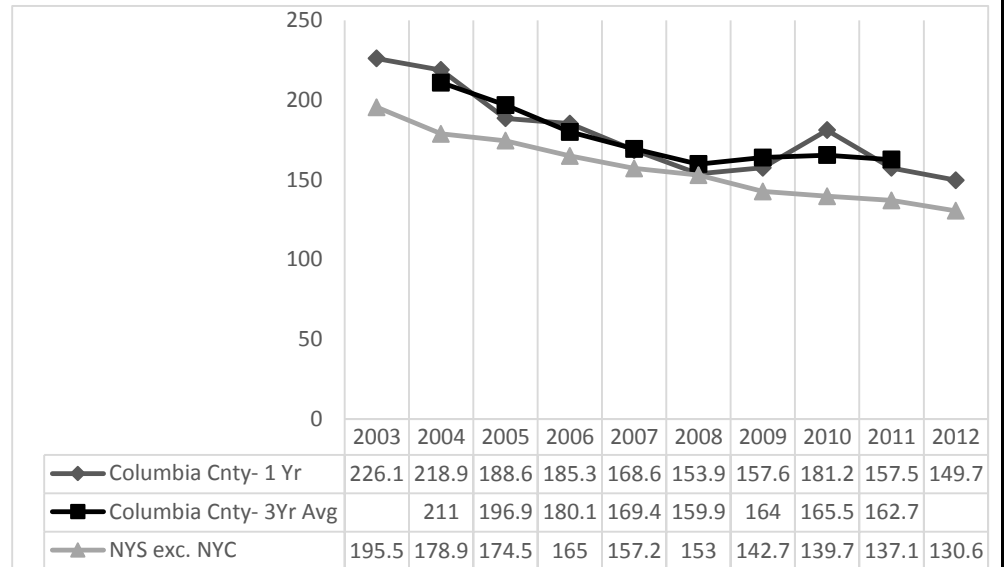
Percentage of Children and Adolescents who are Obese (2010-2012)



Coronary Heart Disease Mortality Rate per 100,000 (2010-2012), Age-Adjusted



Source: 2010-2012 Vital Statistics Data as of February, 2014



Reduce Smoking and Related Illness:

Indicator	Year(s)	Columbia County	Capital Region	NYS, except NYC	PA 2017 objective	County # change needed to reach PA objective
	For rate/ For #	Rate/% #	Rate/%	Rate/%	Rate/%	
Percentage of cigarette smoking among adults, age-adjusted <i>Number:</i>	2013-2014	23.5 10,331	19.7	18.0	15.0	-3,737
COPD/CLRD hospitalization rate per 10,000, age-adjusted <i>Number:</i>	2010-2012 2012	28.3 287	29.0	30.0		
COPD/CLRD mortality per 100,000, age-adjusted <i>Number:</i>	2010-2012 2012	48.0 42	45.6	37.3		
Percentage of adults with current asthma, age-adjusted <i>Number:</i>	2013-2014	16.9 7379	11.7	10.5		
Asthma hospitalization rate per 10,000, age-adjusted <i>Number:</i>	2010-2012 2012	8.6 63	10.0	11.4		
Asthma ED visit rate per 10,000, age-adjusted <i>Number:</i>	2013	36 224	51.2	47.6	75.1	*
Asthma ED visit rate per 10,000, ages 0-4 yrs <i>Number:</i>	2013	95.3 26	139.4	115.2	196.5	*

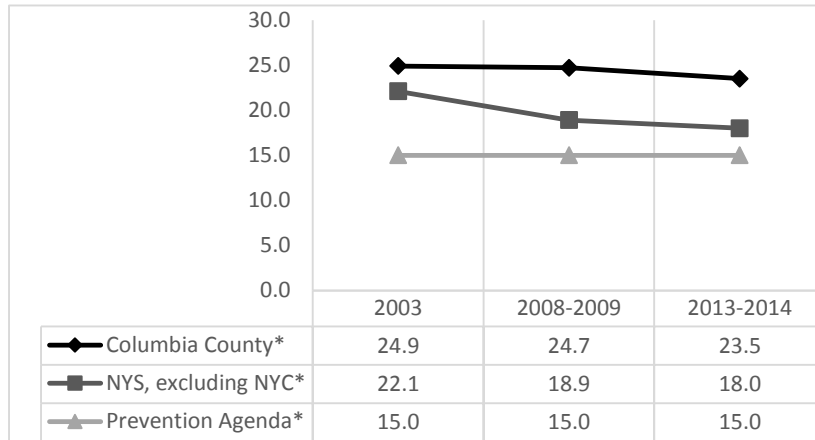
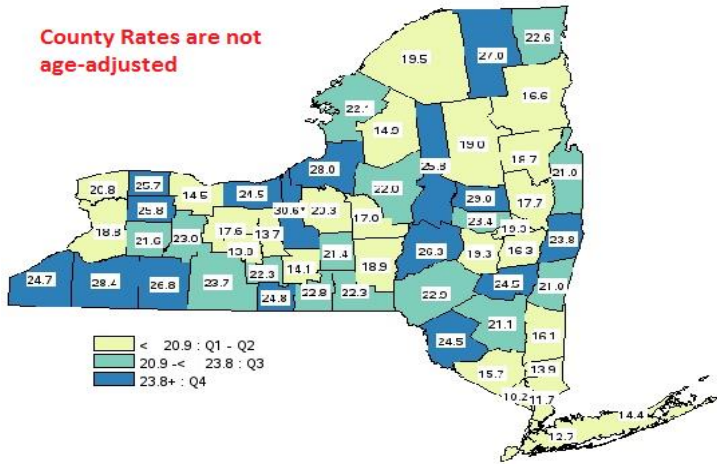
Asthma hospitalizations per 10,000 by age group (years)					Asthma ED visit rate per 10,000 by age group (years)				
Age group (years)	Year(s)	Columbia County	6-county Region	NYS, excluding NYC	Age group (years)	Year(s)	Columbia County	6-county Region	NYS, excluding NYC
	For Rate/ % For #	Rate / % #	Rate/ %	Rate / %		For Rate / % For #	Rate / % #	Rate / %	Rate / %
0-17	2010-2012 2012	9.1 11	12.4	14.5	0-17	2010-2012 2012	66.2 63	83.9	78.1
18-64	2010-2012 2012	8.1 40	8.3	9.0	18-64	2010-2012 2012	33.9 136	52.7	47.7
65+	2010-2012 2012	8.5 11	13.9	19.2	65+	2010-2012 2012	6.8 10	15.1	19.1

PA, Prevention Agenda; *=PA objective reached

■ =Ranked in 3rd Quartile among all counties of NYS; ■ =Ranked in 4th Quartile among all counties of NY

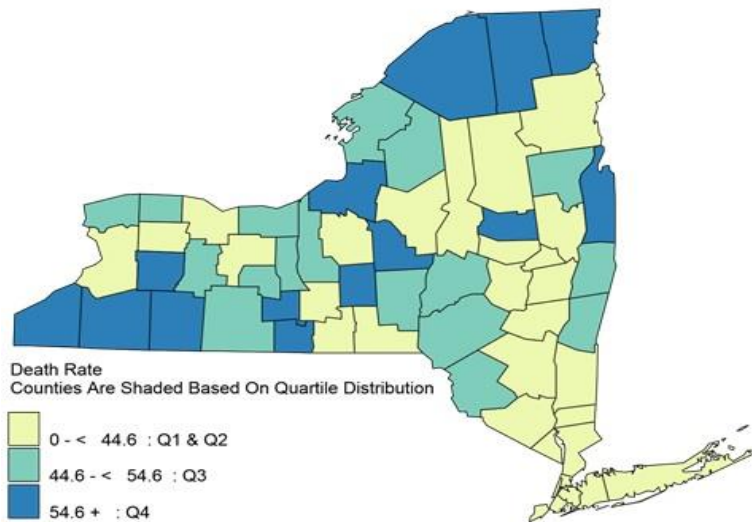
Percentage of Adults Currently Smoking (2013-2014)

County Rates are not age-adjusted

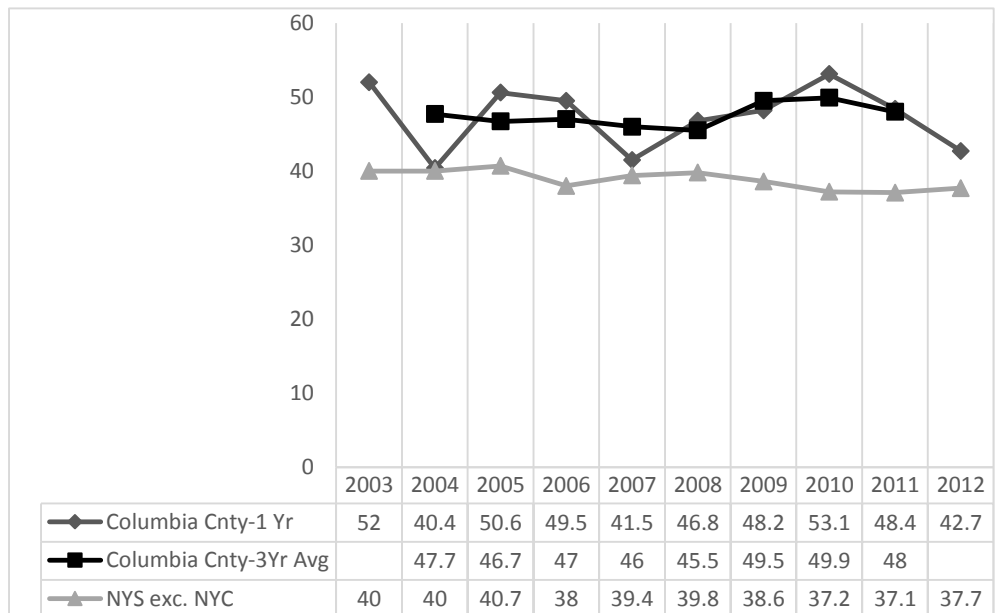


*Rates are age adjusted

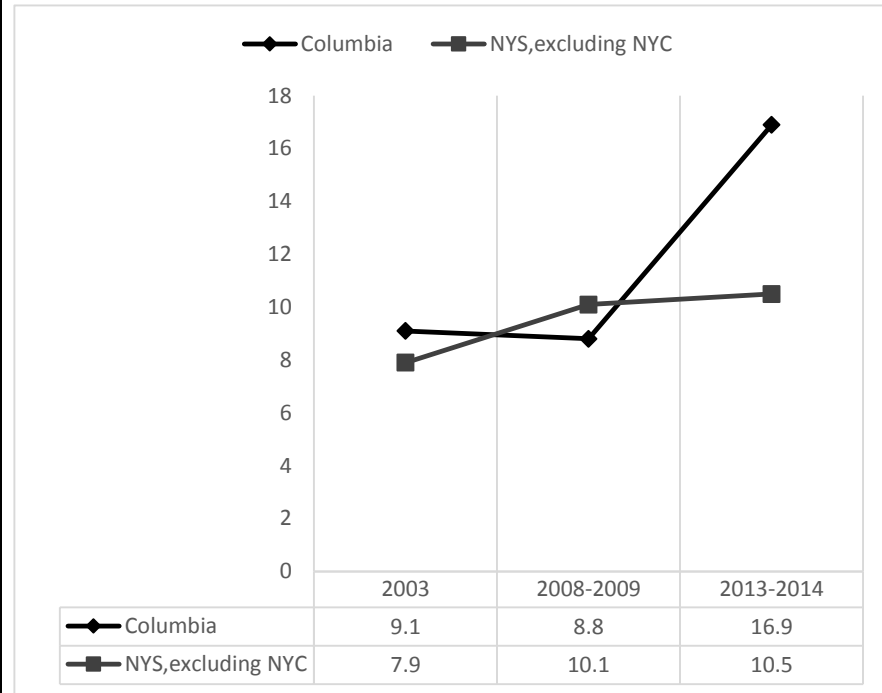
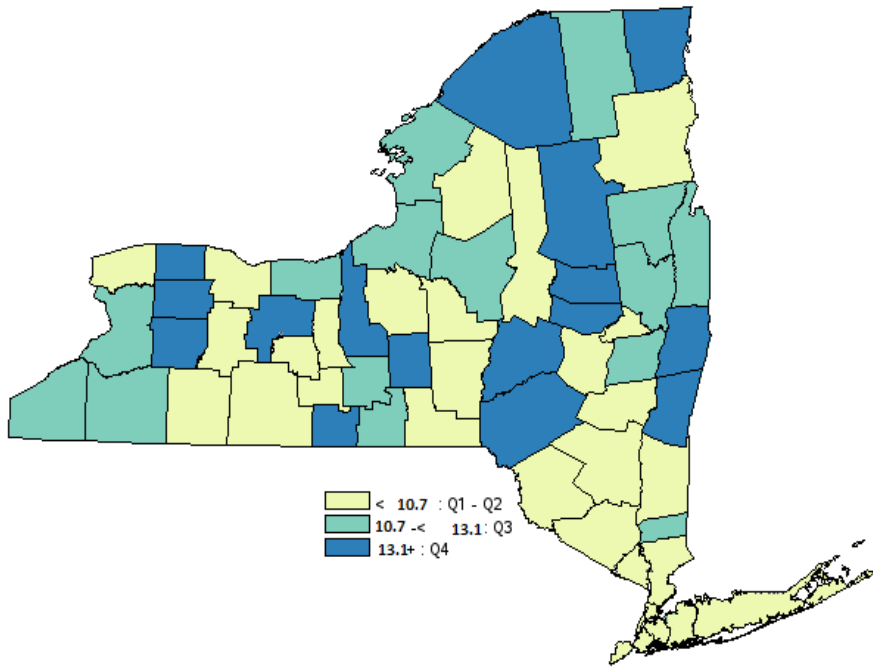
Chronic Lower Respiratory Disease Mortality Rate per 100,000 (2010-2012), Age-Adjusted



Source: 2010-2012 Vital Statistics Data as of February, 2014



Percentage of adults with current asthma, age adjusted



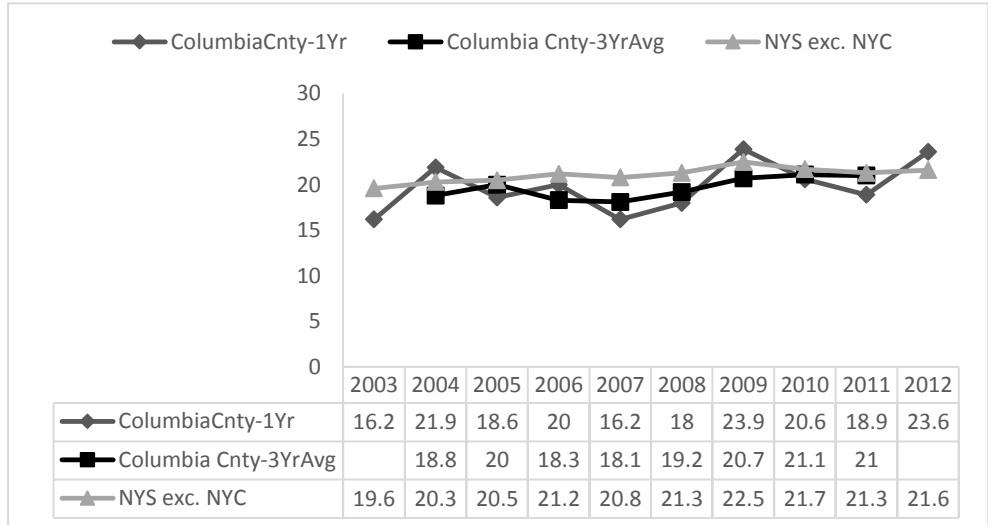
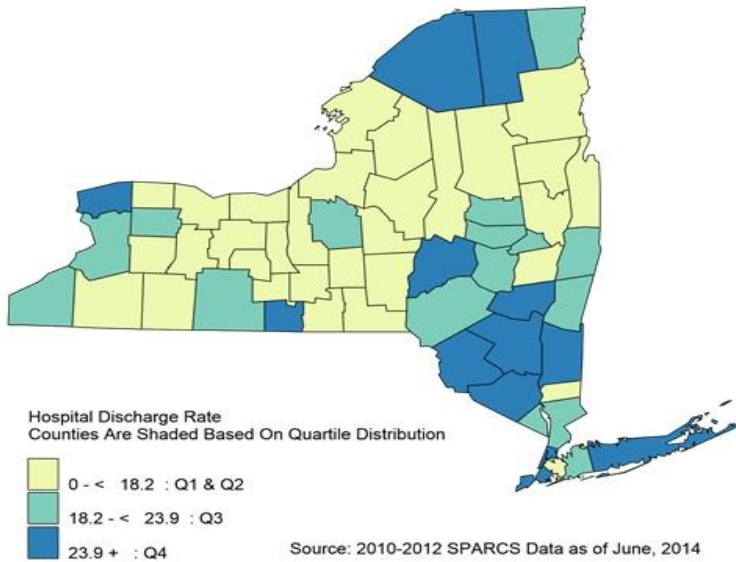
Mental Health Promotion/Substance Abuse Prevention

Indicator	Year(s)	Columbia County	Capital Region	NYS, except NYC	PA 2017 Objective	County # change needed to reach PA Objective
	For rate/% For #	Rate/% #	Rate/%	Rate/%	Rate/%	
Percentage of adults with poor mental health for 14+ days in past month, age-adjusted <i>Number:</i>	2013-2014	9.5 5,948	13.5	11.8	10.1	*
Age-adjusted suicide death rate per 100,000 <i>Average Annual Number:</i>	2011-2013 2013	10.8 7	10.8	8.0	5.9	-3
Self-inflicted injury hospitalizations per 10,000, age-adjusted <i>Number:</i>	2010-2012 2012	5.8 25	8.1	6.8		
Drug-related hospitalization rate per 10,000, age-adjusted <i>Number:</i>	2010-2012 2012	21.0 123	18.4	21.5		
Adult binge drinking during the past month, age adjusted <i>Number:</i>	2013-2014	20.1 12,584	18.3	17.4	18.4	-1,064

PA, Prevention Agenda; *=PA objective reached

■ =Ranked in 3rd Quartile among all counties of NYS

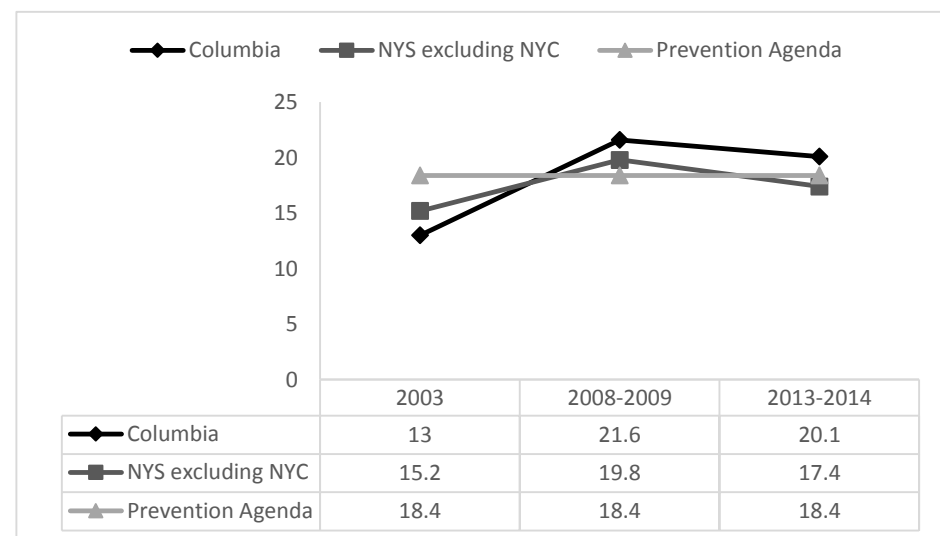
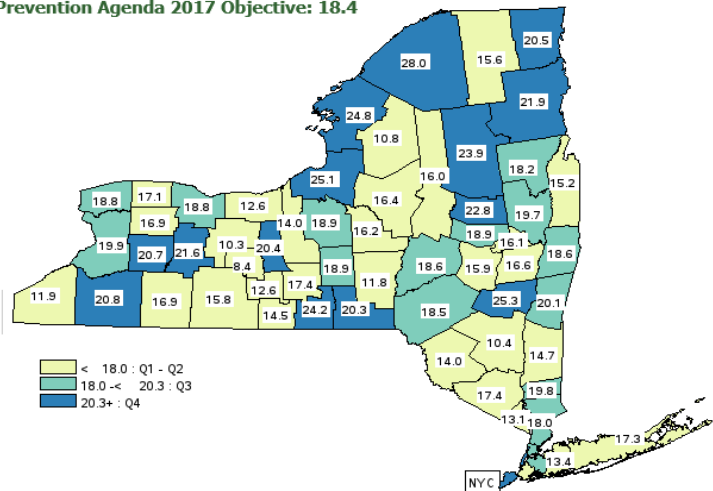
Drug-Related Hospitalization Rate per 10,000, Age-Adjusted (2010-2012)



Percentage of Adults Binge Drinking, Age-Adjusted (2013-2014)

Age-adjusted percentage of adult binge drinking during the past month, 2013-2014

Prevention Agenda 2017 Objective: 18.4



Arthropod-borne Illness- Lyme Disease:

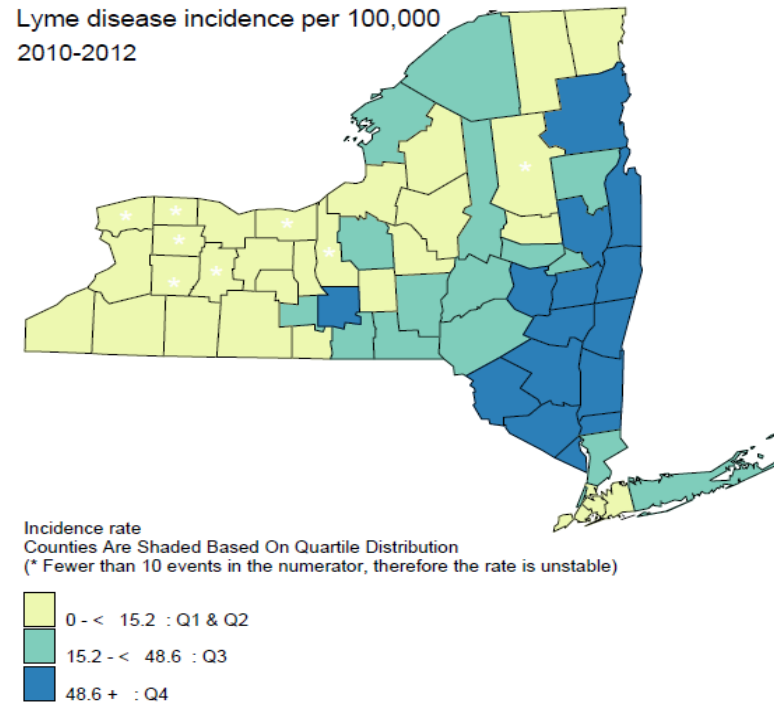
Indicator	Year(s)	Columbia County	Capital Region	NYS, except NYC	PA 2017 objective	County # change needed to reach PA objective
	For rate/% For #	Rate/% Number	Rate/%	Rate/%	Rate/%	
Lyme disease incidence rate per 100,000 <i>Number:</i>	2010-2012	574.6	200.1	54.1		
	2012	342				

PA, Prevention Agenda

*=PA objective reached

■ =Rate ranked in 3rd Quartile among all counties of NY; ■ =Ranked in 4th Quartile among all counties of NY

Lyme Disease Incidence Rate per 100,000 (2010-2012)



Occupational Injury

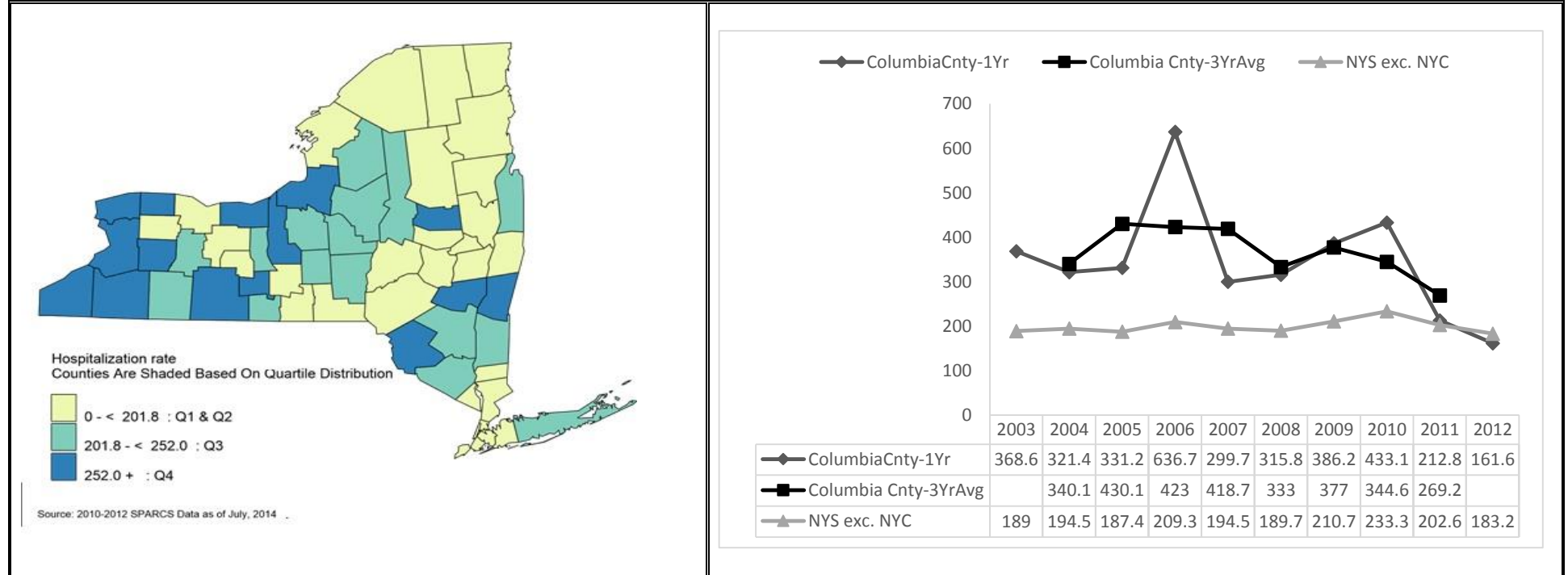
Indicator	Year(s)	Columbia County	Capital Region	NYS, except NYC	PA 2017 Objective	County # change needed to reach PA Objective
	For rate/% For #	Rate/% #	Rate/%	Rate/%	Rate/%	
Occupational injury ED rate per 10,000- ages 15-19 yrs <i>Number:</i>	2013	62.2 23	31.8	35.0	33.0	-11
Work-related hospitalization rate per 10,000 employed- ages 16+ yrs <i>Number:</i>	2010-2012 2012	26.9 46	17.1	20.6		
Elevated blood lead level rate per 100,000 employed- ages 16+ yrs <i>Number:</i>	2010-2012 2012	58.8 17	19.7	23.7		

PA, Prevention Agenda

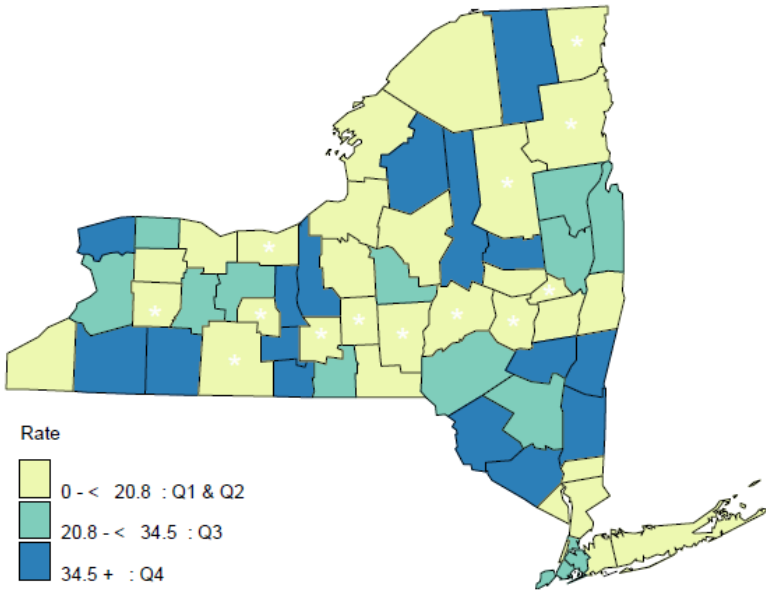
*=PA objective reached

—=Ranked in 3rd Quartile among all counties of NYS; —=Ranked in 4th Quartile among all counties of NYS

Work-Related Hospitalization Rate per 100,000 Employed Persons Ages 16+ (2010-2012)



Elevated Blood Lead Levels (≥ 10 micrograms per deciliter) per 100,000 Employed Persons Aged 16 years and Older (2010-2012)



Counties Are Shaded Based On Quartile Distribution
 (* Fewer than 10 events in the numerator, therefore the rate is unstable)

