

Prioritization Process

Schenectady County

Health Issue Ranking



**Schenectady County
Public Health Services**

Schenectady Prioritization

Spring – Summer, 2022

Finalization of Priorities

Discussion of any 5 County Regional Priorities

2023 Community Health Improvement Plan (CHIP)
Development Committees Meet

Current CHIP Task Forces Meet

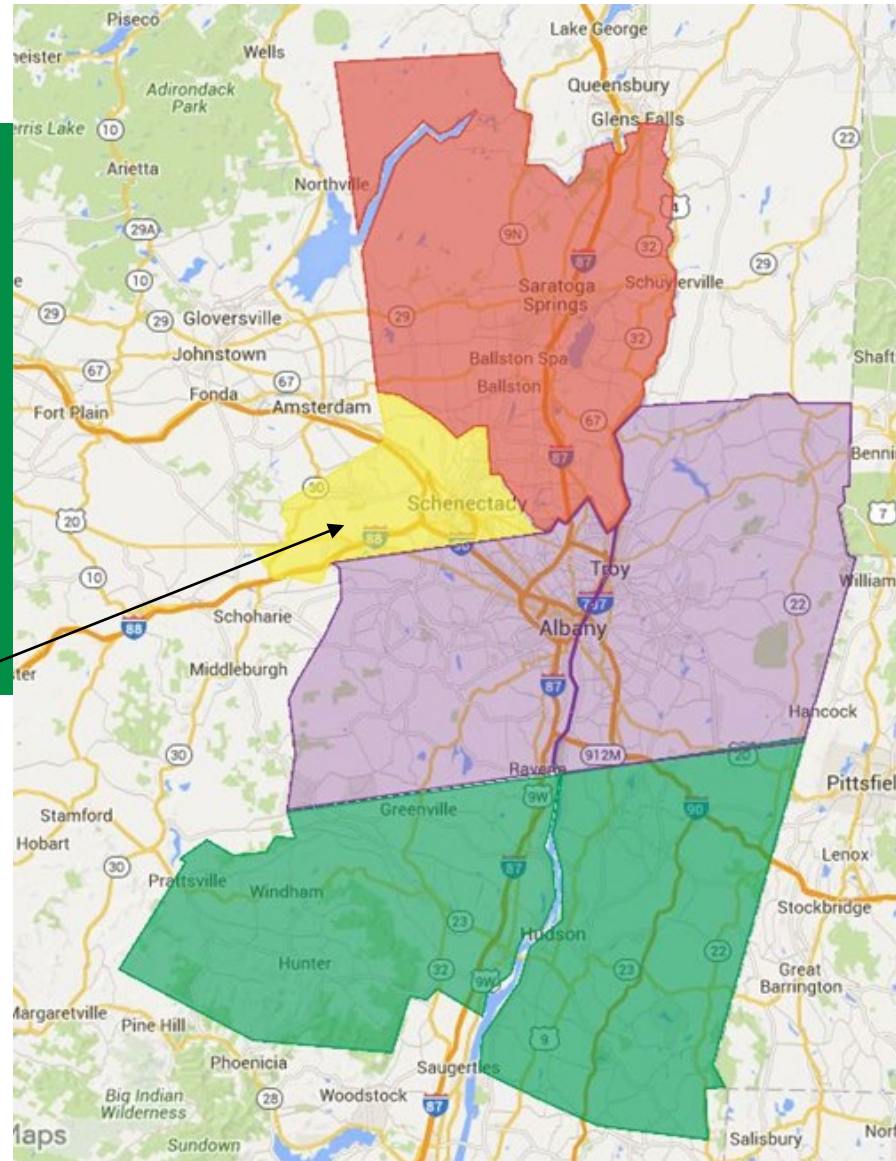
Current Prevention Agenda Priorities

2019-2021

County: Schenectady

Selected Priority Areas:

- Tobacco Prevention
- Mental & Substance Use Disorder Prevention



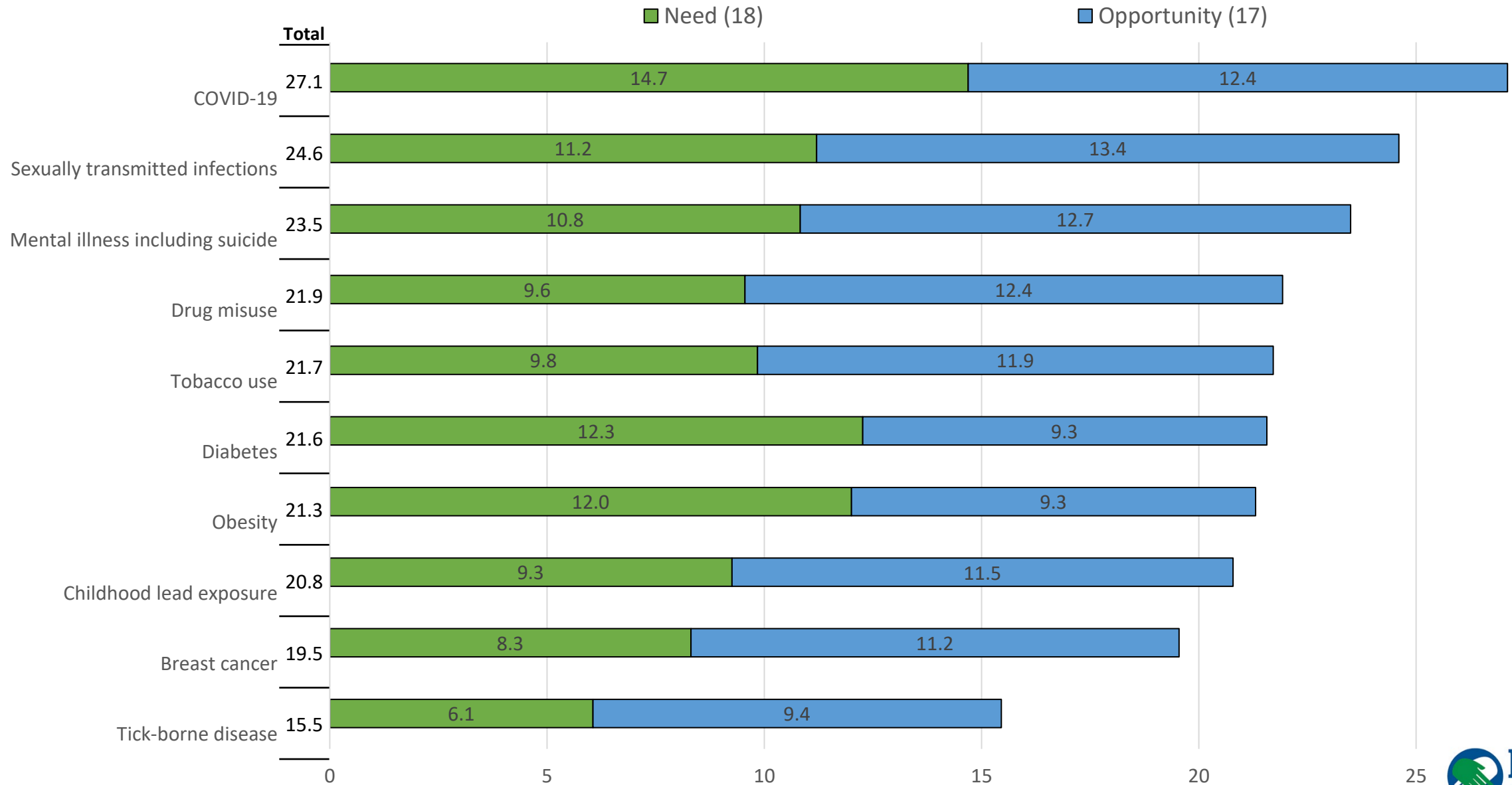
2021 Results

Total Priority Scores

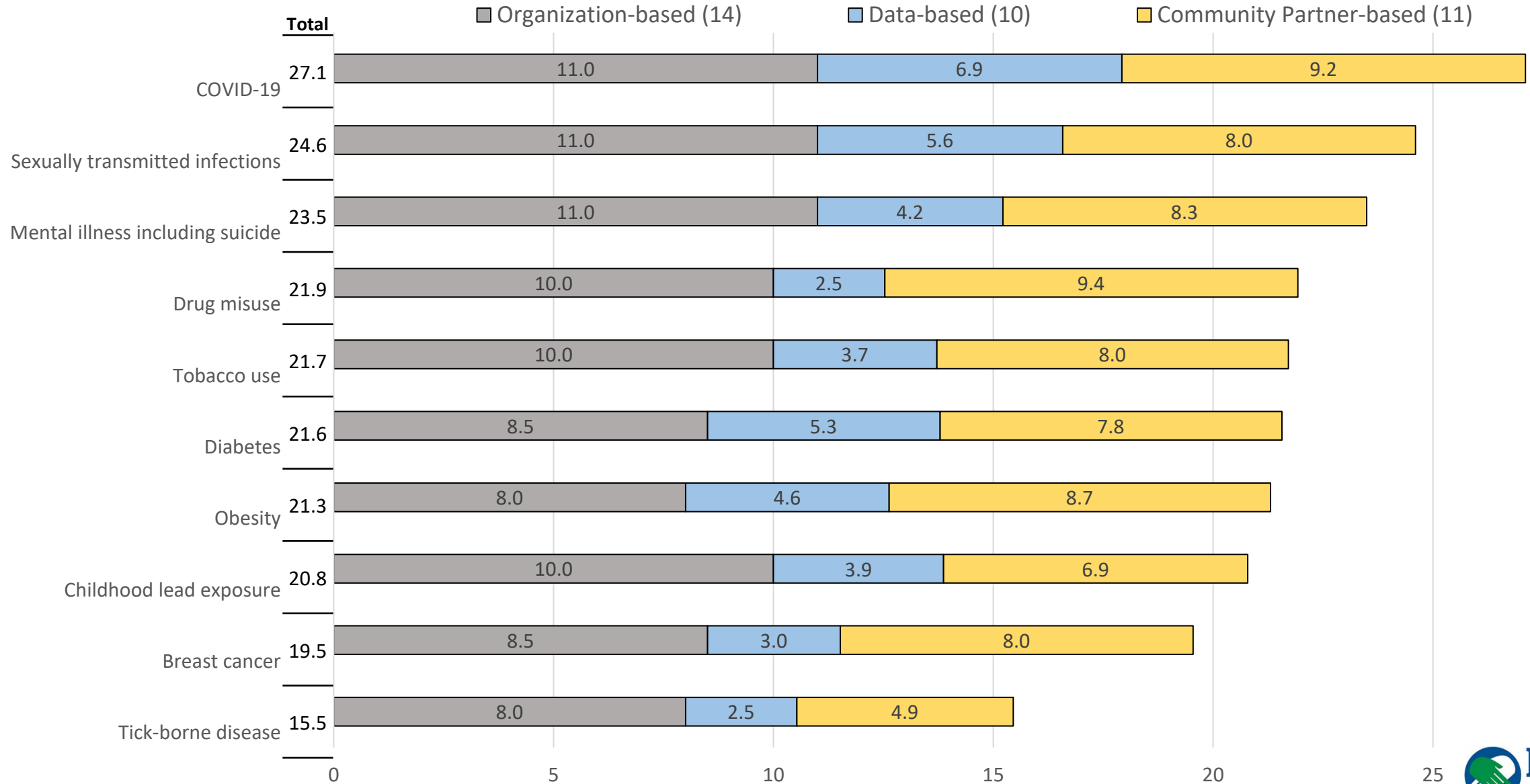
Health Issue Rankings – Schenectady County

Health Issue	Total Priority Score			Organization-based		Community Partner-based
		Need	Opportunity	Data-based		
COVID-19	1	1	3	1	1	2
Sexually transmitted infections	2	4	1	2	1	6
Mental illness including suicide	3	5	2	5	1	4
Drug misuse	4	7	4	9	4	1
Tobacco use	5	6	5	7	4	7
Diabetes	6	2	9	3	7	8
Obesity	7	3	9	4	9	3
Childhood lead exposure	8	8	6	6	4	9
Breast cancer	9	9	7	8	7	5
Tick-borne disease	10	10	8	10	9	10

Total Priority Score (out of 35) – Schenectady



Total Priority Score (out of 35) – Schenectady

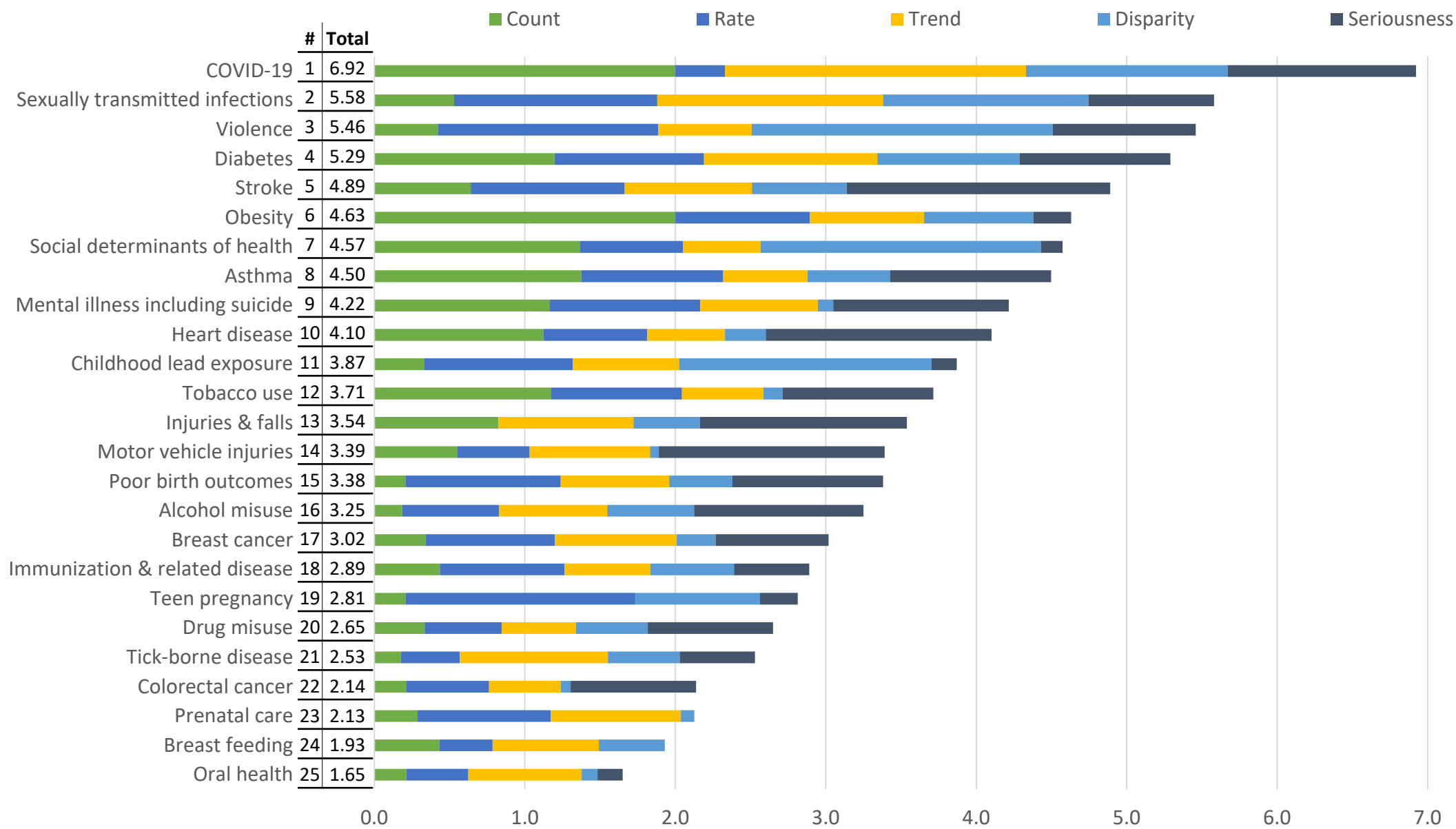




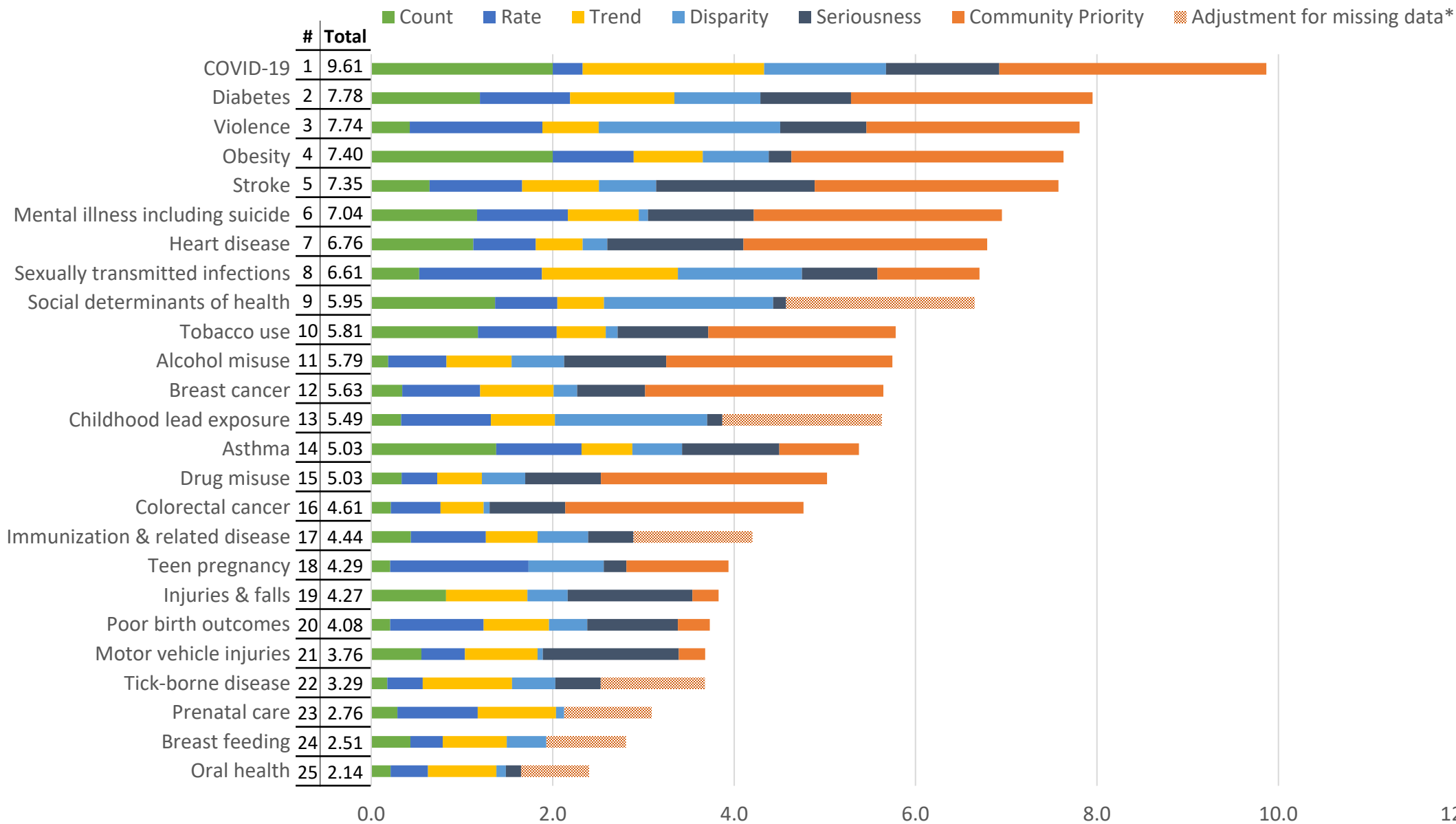
2021 Results

Data and Survey Scores

Data-based Scores (out of 10) – Schenectady



Data + Survey Score (out of 13) – Schenectady

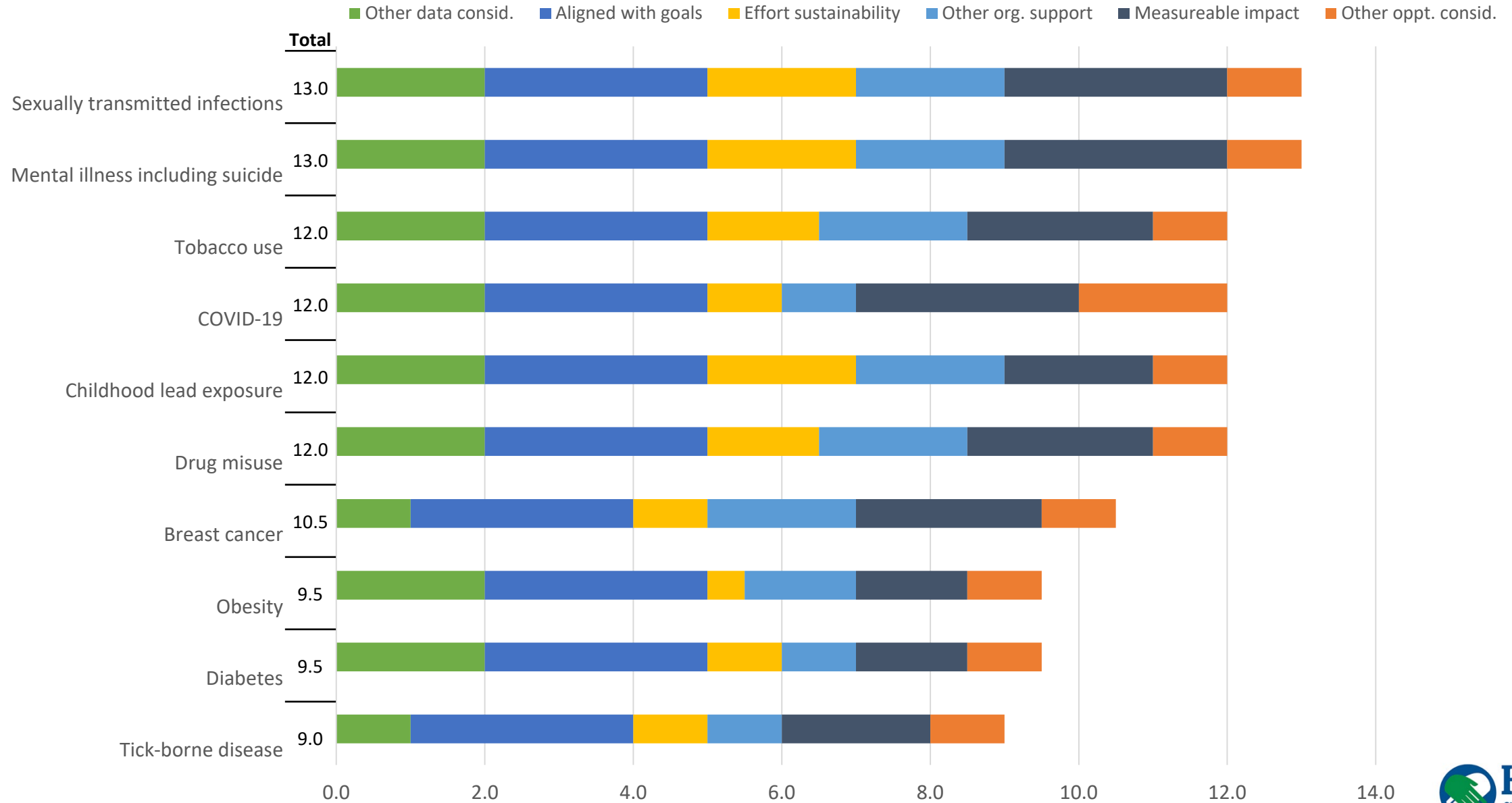


* Health issues with missing data were weighted to have a total score out of 13

2021 Results

Hospital and Local Health Department Scoring

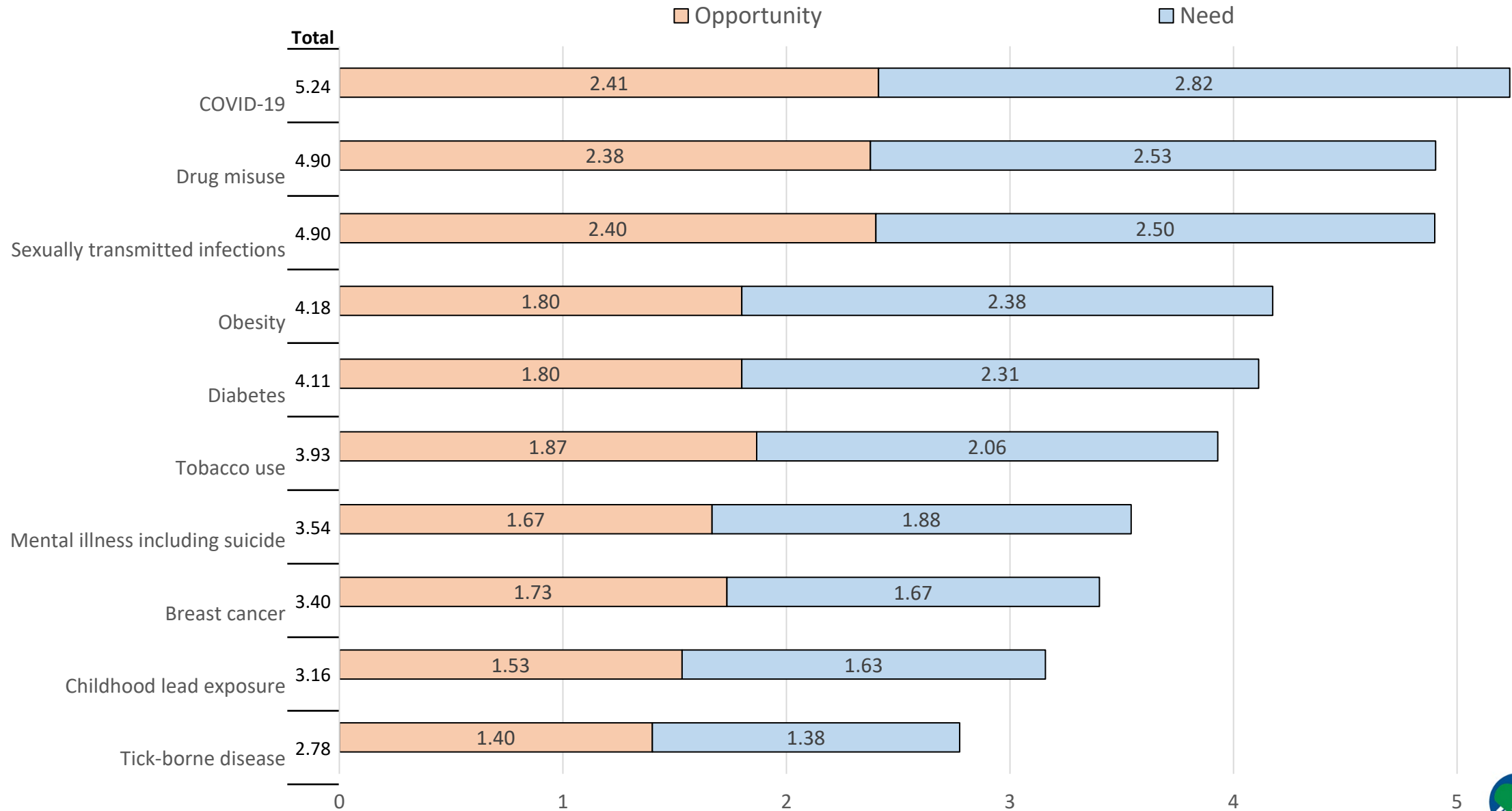
Organizational Scores – Schenectady



2021 Results

Community Partner Consideration Scoring

Community Partner Consideration Scores (out of 6) – Schenectady



Health Measures

Data Sources &

Top 10 for Metrics: Count, Rate, Trend, & Disparity

Health Issue & Measure Selection

- **25 Health Issues** and around **140 Health Measures** were selected from over 700 health measures located in the following data collections:
 - Prevention Agenda Dashboard
 - Community Health Indicator Reports (CHIRS) Dashboard
 - County Health Indicators by Race/Ethnicity (CHIRE)
 - SPARCS data – via Common Ground Health Portal
 - NYS Opioid Data Dashboard
 - NYS Behavioral Risk Factor Surveillance Survey (BRFSS)
 - Division of Criminal Justice Services (DCJS) Index Crimes
 - NYS DOH COVID-19 Tracker
 - NYS DOH Cancer Registry
 - County Health Rankings and Roadmaps

Health Issues
COVID-19
Colorectal Cancer
Breast Cancer
Obesity
Asthma
Diabetes
Heart disease
Stroke
Violence
Injuries & falls
Motor vehicle injuries
Poor birth outcomes
Prenatal care
Breast feeding
Tobacco use
Drug misuse
Alcohol misuse
Mental illness including suicide
Sexually transmitted infections
Teen pregnancy
Childhood lead exposure
Tick-borne disease
Immunization & related disease
Social Determinants of Health
Oral Health



Top 10 Counts

Schenectady County

	Health Measure	Count	Health Issue
Prevalence	1 Obesity, adults	37,720	Obesity
	2 Asthma, adults	17,863	Asthma
	3 Population in poverty	17,555	Social determinants of health
	4 Diabetes, adults	13,535	Diabetes
	5 Smokers, adults	13,030	Tobacco use
Incidence	1 Mental disease and disorder ED visits and hospitalizations, plus suicide deaths	5,411	Mental illness including suicide
	2 Heart disease hospitalizations	5,018	Heart disease
	3 Injury hospitalizations, unintentional	2,701	Injuries & falls
	4 Stroke hospitalizations	1,633	Stroke
	5 Motor Vehicle Traffic Injury ED Visits	1,217	Motor vehicle injuries

Top 10 Rates – Worse than NYS excl. NYC

Schenectady County

$$\text{Rate Ratio} = \left(\frac{\text{County Rate}}{\text{NYS excl. NYC Rate}} \right)$$

	Health Measure	Average Rate Ratio	Health Issue
1	Violent crime	2.16	Violence
2	Teen pregnancy - aged <18 years	1.98	Teen pregnancy
3	Index crime	1.74	Violence
4	Gonorrhea diagnoses	1.70	Sexually transmitted infections
5	Assault hospitalization	1.62	Violence
6	Oral cavity and pharynx cancer mortality	1.52	Tobacco use
7	Newly diagnosed HIV case	1.52	Sexually transmitted infections
8	Firearm assault-related hospitalizations	1.50	Violence
9	Mental disease/disorder (primary diagnosis) hospitalization	1.50	Mental illness including suicide
10	Asthma, adults (current)	1.47	Asthma

Top 10 Trends – Worsening Schenectady County

	Health Measure	Trend	Health Issue
1	Opioid overdose deaths (any opioid)	3.78	Drug misuse
2	Early syphilis case	1.32	Sexually transmitted infections
3	Suicide mortality among youth , aged 15-19 years	1.29	Mental illness including suicide
4	Potentially preventable diabetes short-term complications hospitalization , aged 18+ years	1.08	Diabetes
5	Gonorrhea diagnoses	0.96	Sexually transmitted infections
6	Anaplasmosis incidence	0.89	Tick-borne disease
7	Hospitalizations due to falls , aged 65+ years	0.50	Injuries & falls
8	Caries (cavities) outpatient visit - Aged 3-5 years	0.49	Oral health
9	Diabetes hospitalization (primary diagnosis)	0.47	Diabetes
10	Cirrhosis hospitalization	0.36	Alcohol misuse

$$\text{Trend} = \left(\frac{\text{Slope} \times \text{Years of Data}}{\text{Average Value}} \right)$$

Top 10 Measures of Disparity

Schenectady County

	Health Measure	Black NH to White NH Ratio	Hispanic to White NH Ratio	Health Issue
1	Percentage of families below poverty	6.74	6.33	Social determinants of health
2	Potentially preventable diabetes short-term complications hospitalization , aged 18+ years	3.57	2.24	Diabetes
3	Diabetes hospitalizations (primary diagnosis)	3.13	1.66	Diabetes
4	Asthma hospitalizations	2.93	1.63	Asthma
5	Asthma hospitalizations, aged 0-17 years	2.90	2.25	Asthma
6	Teen pregnancies , aged 0-17 years	2.78	2.22	Teen pregnancy
7	Percentage of low birthweight births (< 2.5 kg)	2.24	1.63	Poor birth outcomes
8	Percentage of premature deaths (< 75 years)	2.03	1.83	
9	Diabetes hospitalizations (any diagnosis)	2.02	1.06	Diabetes
10	Cerebrovascular disease (stroke) mortality	1.93		Stroke

Thank you

Visit www.hcdiny.org for Prevention Agenda updates, presentation materials and other health data resources.

To learn more about:

- The Prevention Agenda
- Regional Health Data

› Visit www.hcdiny.org

The screenshot displays the Healthy Capital District website. At the top left is the logo with the text "Healthy Capital District" and the tagline "Get Covered • Find Care • Stay Healthy". To the right is a diverse group of people. Below the logo is a navigation bar with the following items: "Get Health Insurance", "Find Health Care", "Stay Healthy", "Get Social Support", and "Explore Health Data". The "Explore Health Data" menu is open, showing a list of counties: Albany County, Columbia County, Greene County, Rensselaer County, Saratoga County, and Schenectady County. A blue arrow points to the "Explore by County" option. Below the navigation bar, the text "HCD Studies and Disparity Reports" is visible. At the bottom, there is a featured report titled "Capital Region Neighborhood Analysis" with a sub-headline "Neighborhood Analysis Health Equity Report" and a publication date of "Published September 26, 2019".