



PROMOTE A HEALTHY AND SAFE ENVIRONMENT



CRIME IN SCHENECTADY COUNTY



Crime Indicators for Schenectady and New York State (excl. NYC), 2014

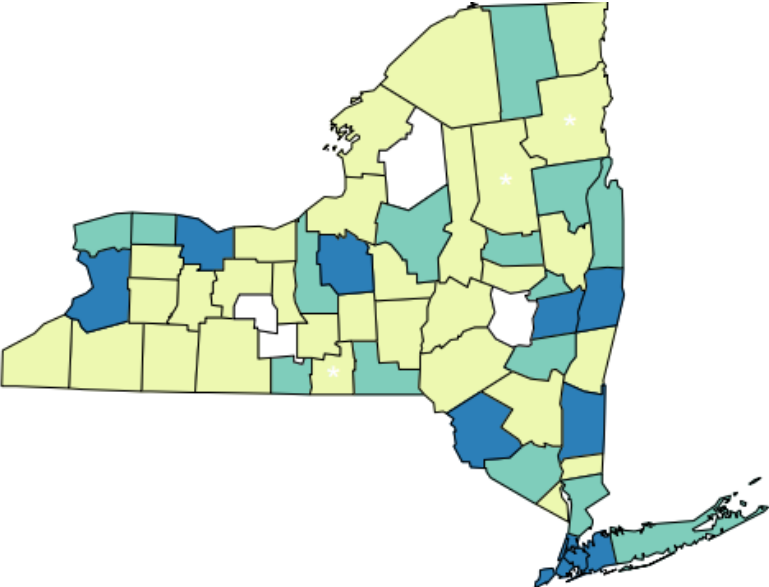
	Schenectady	Capital Region
Number of Assault ED Visits per year (2013)	1,079	3,544
Number of Assault Hospitalizations per year (2013)	35	210
Number of firearm-related crimes known to the police per year	101	365
Number of violent index crimes known to the police per year	631	2,561
Number of property index crimes known to the police per year	4,501	20,743
Young Adult (16-21 years) Arrests- Drug Use/Possession/Sale	81	623

Crime Indicators and Significance for Schenectady Compared to New York State (excl. NYC), 2014



	Schenectady		Upstate
Age-Adjusted Assault ED Visits/10,000 (2011-2013)	74.4	Higher	37.1
Age-Adjusted Assault hospitalizations/10,000 (2011-2013)	2.6	Similar	2.7
Firearm-related crime/10,000	6.5	Higher	4.1
Violent crime/10,000	40.5	Higher	22.3
Property crime/10,000	289.1	Higher	178.5
Young Adult (16-21 years) Arrests- Drug Use/Possession/Sale/10,000	63.4	Lower	69.7

Assault Hospitalizations per 10,000 population

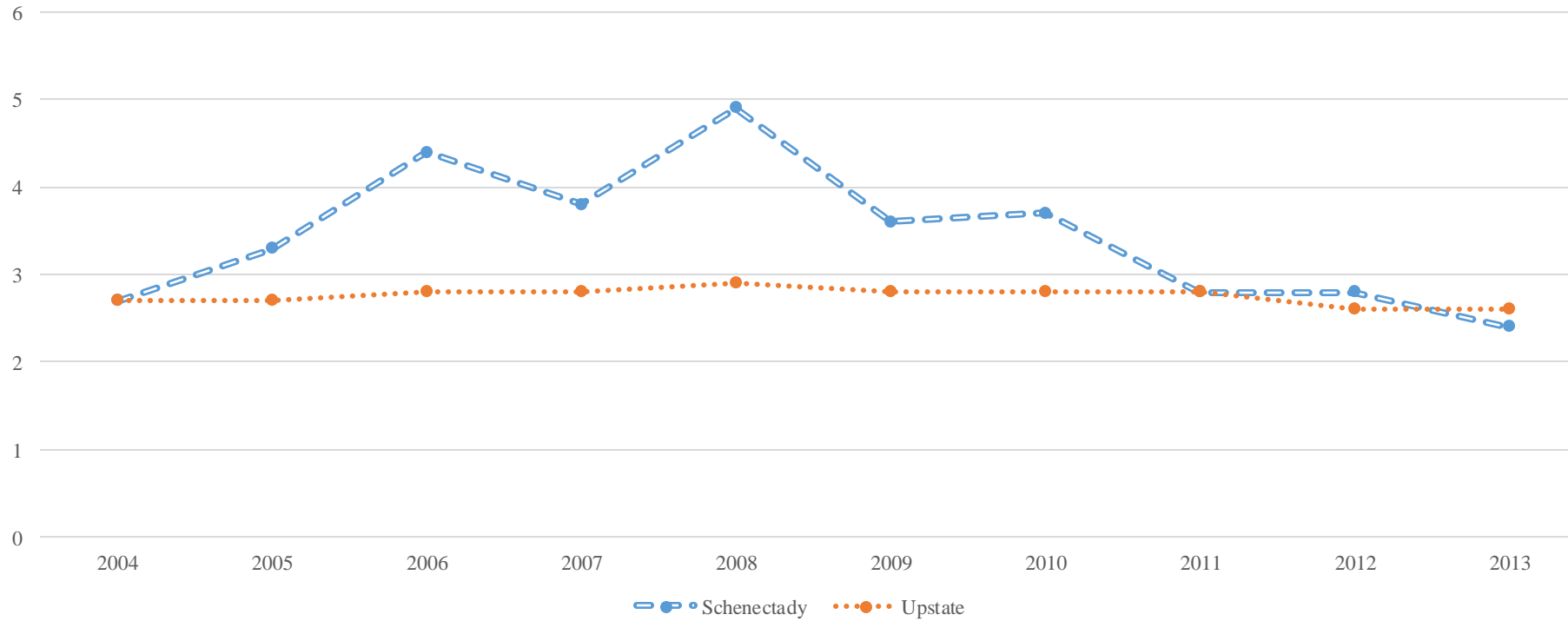


Hospital Discharge Rate
Counties Are Shaded Based On Quartile Distribution
(* Fewer than 10 events in the numerator, therefore the rate is unstable)

- Data not available
- 0 - < 1.6 : Q1 & Q2
- 1.6 - < 2.8 : Q3
- 2.8+ : Q4

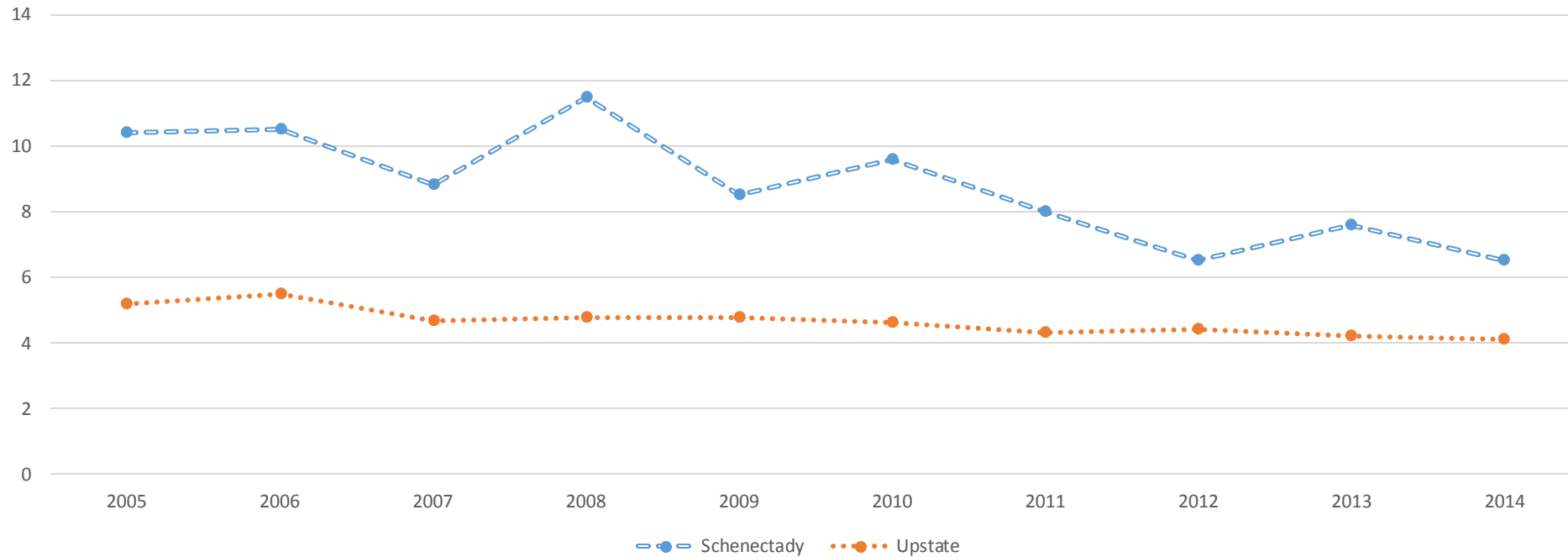
Source: 2011-2013 SPARCS Data as of December, 2014

Age-Adjusted Assault Hospitalization Rate per 10,000 population for New York State (excl. NYC) and Schenectady County, 2004-2013



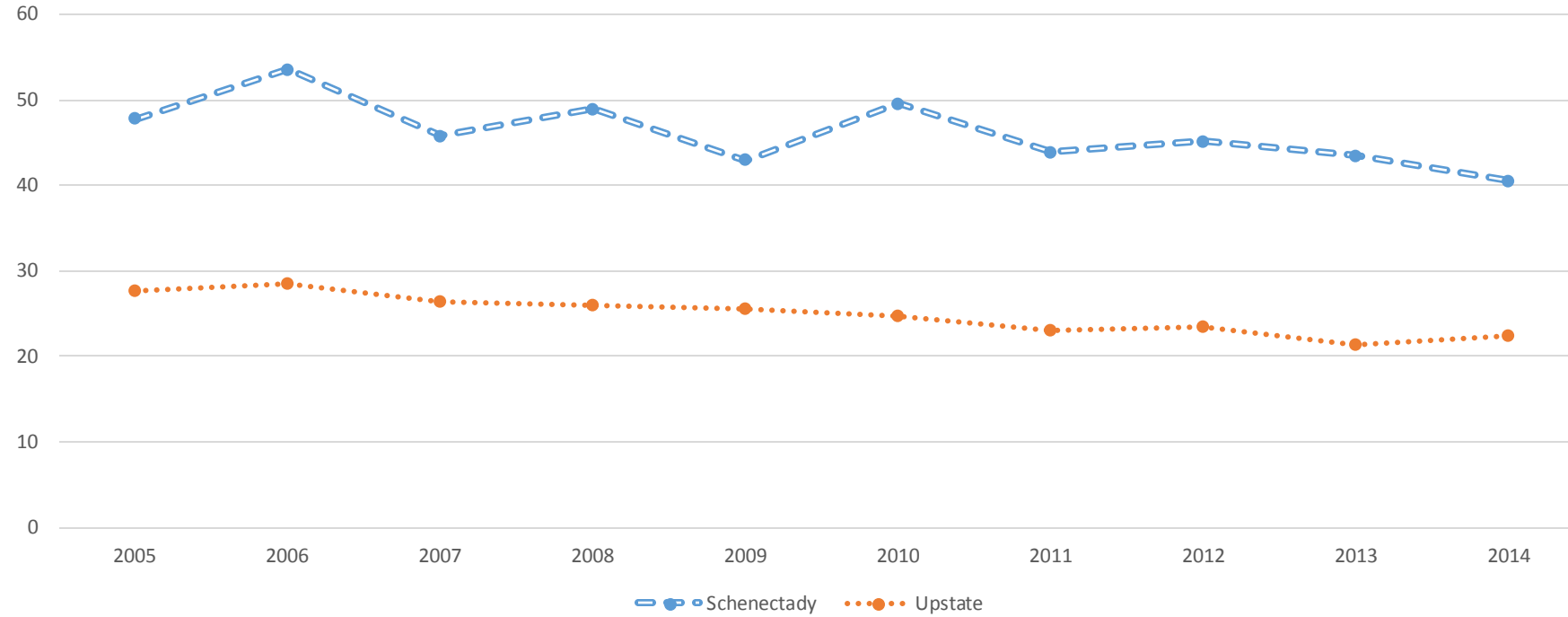
	2004	2005	2006	2007	2008	2009	2010	2011	2012	2013
Schenectady	2.7	3.3	4.4	3.8	4.9	3.6	3.7	2.8	2.8	2.4
Upstate	2.7	2.7	2.8	2.8	2.9	2.8	2.8	2.8	2.6	2.6

Firearm-Related Index Crime Rate Per 10,000 population for New York State (excl. NYC) and Schenectady, 2005-2014



	2005	2006	2007	2008	2009	2010	2011	2012	2013	2014
Schenectady	10.4	10.5	8.8	11.5	8.5	9.6	8	6.5	7.6	6.5
Upstate	5.2	5.5	4.7	4.8	4.8	4.6	4.3	4.4	4.2	4.1

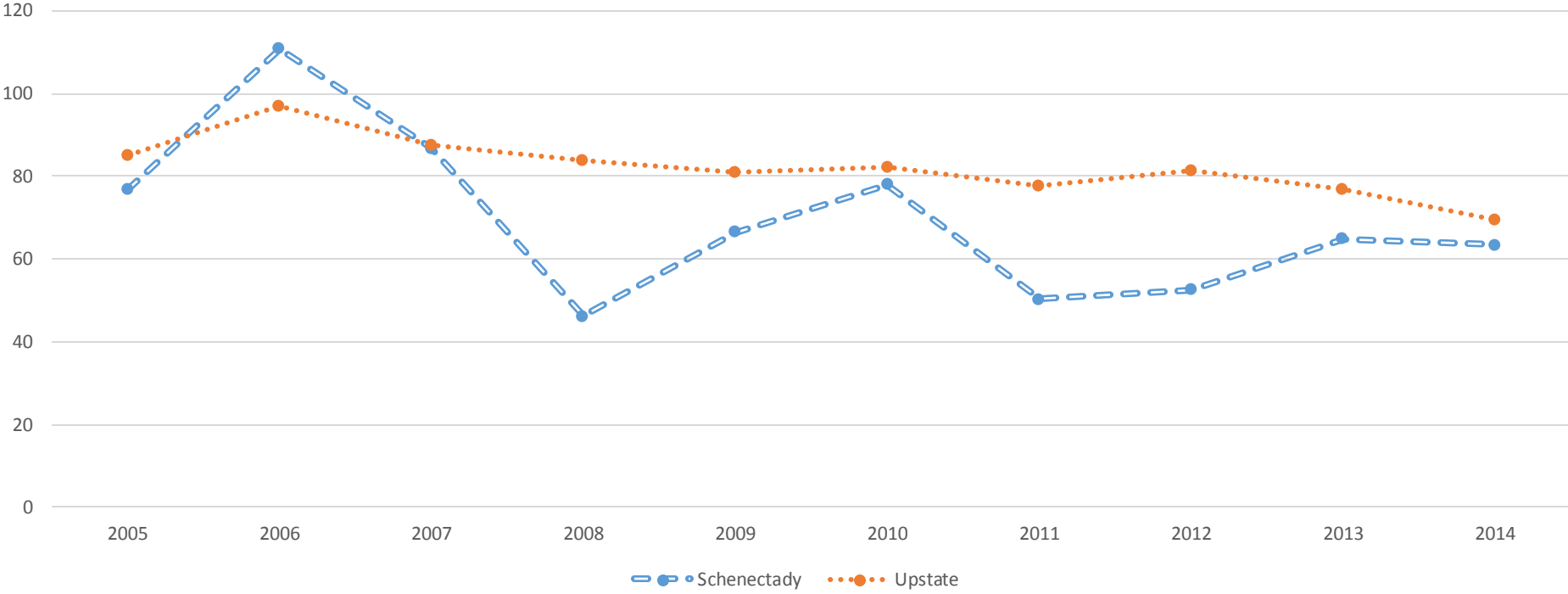
Violent Crime Rate per 10,000 population for New York State (excl. NYC) and Schenectady County, 2005-2014



	2005	2006	2007	2008	2009	2010	2011	2012	2013	2014
Schenectady	47.8	53.5	45.8	48.9	42.9	49.5	43.9	45.1	43.4	40.5
Upstate	27.7	28.5	26.4	26	25.6	24.7	23.1	23.4	21.3	22.3



Young Adult Arrests- Drug Use/Possession/Sale per 10,000 population for New York State (excl. NYC) and Schenectady County, 2005-2014



	2005	2006	2007	2008	2009	2010	2011	2012	2013	2014
Schenectady	76.8	110.8	86.8	46.3	66.5	78	50.3	52.5	64.9	63.4
Upstate	85	96.8	87.4	83.7	81	82.3	77.9	81.5	76.9	69.7

EQUITY



Assault Indicators per 10,000 by Gender, 2011-2013



Age-Adjusted Hospitalizations

	Schenectady	Capital Region
Male	4.8	3.7
Female	1.6	1.1

Age- Adjusted ED Visits

	Schenectady	Capital Region
Male	76.8	46.5
Female	67.8	37.6

Assault Indicators by Race/Ethnicity and SES, 2011-2013



	Schenectady	New York State
Ratio of Black non-Hispanics to White non-Hispanics	6.06	7.36
Ratio of Hispanics to White non-Hispanics	2.19	3.24
Ratio of high income ZIP codes to non-low income ZIP codes	6.84	3.22

Top Neighborhood Rates

Source: SPARCS data as of December 2014



Assault ED Visits

Schenectady – 74.4

Hamilton Hill- 277.0

City/Stockade- 133.2

Goose Hill/ Union- 109.4

Upstate- 37.1

Assault Hospitalizations

Schenectady- 2.6

Hamilton Hill- 15.7

City/Stockade- 8.0

Goose Hill/ Union- 4.4

Upstate- 2.7

Crime Summary



Annually, Schenectady county has:

- **1,079 Assault ED Visits**
- **35 Assault Hospitalizations**
- **101 Firearm-related Crimes**
- **631 Violent Crimes**
- **4,501 Property Crimes**
- **81 Young Adult Arrests for Drug Possession/Sale/Use**

Crime Summary

- **Schenectady County was higher than ROS for assault ED visits, but only slightly higher for assault hospitalizations than ROS.**
- **Schenectady County was higher than ROS for firearm-related crimes, violent crime and property crimes.**
- **Young Adult arrests for drug possession/sale/use were lower than ROS.**
- **Assaults, Property Crimes, Firearm-related crimes, and violent crimes have all been on the decline for Schenectady County.**
- **Young Adult arrests for drug possession/sale/use has been on the decline since 2006.**
- **The Black non-Hispanic population was 6 times more likely to have an assault resulting in hospitalization, compared to the White non-Hispanic population.**
- **Residents in low income ZIPs were about 7 times more likely to have an assault resulting in hospitalization, compared to residents of higher income ZIPs.**
- **High risk neighborhoods had 3.0 to 7.5 times the assault ED visit rate and 1.8 to 6.3 the hospitalization rates compared to ROS.**





FALLS IN SCHENECTADY COUNTY



The Effect of Falls on the Population, ages 65+ years, 2013

	Schenectady	Capital Region
Number of ED Visits per year	1,205	5,300
Number of Hospitalizations per year	474	2,771

The Effect of Falls on the Population, ages 1-4 years, 2013

	Schenectady	Capital Region
Number of ED Visits per year	418	1,495
Number of Hospitalizations per year	3	23

Fall Indicators and Significance for Schenectady Compared to NYS (excl. NYC)

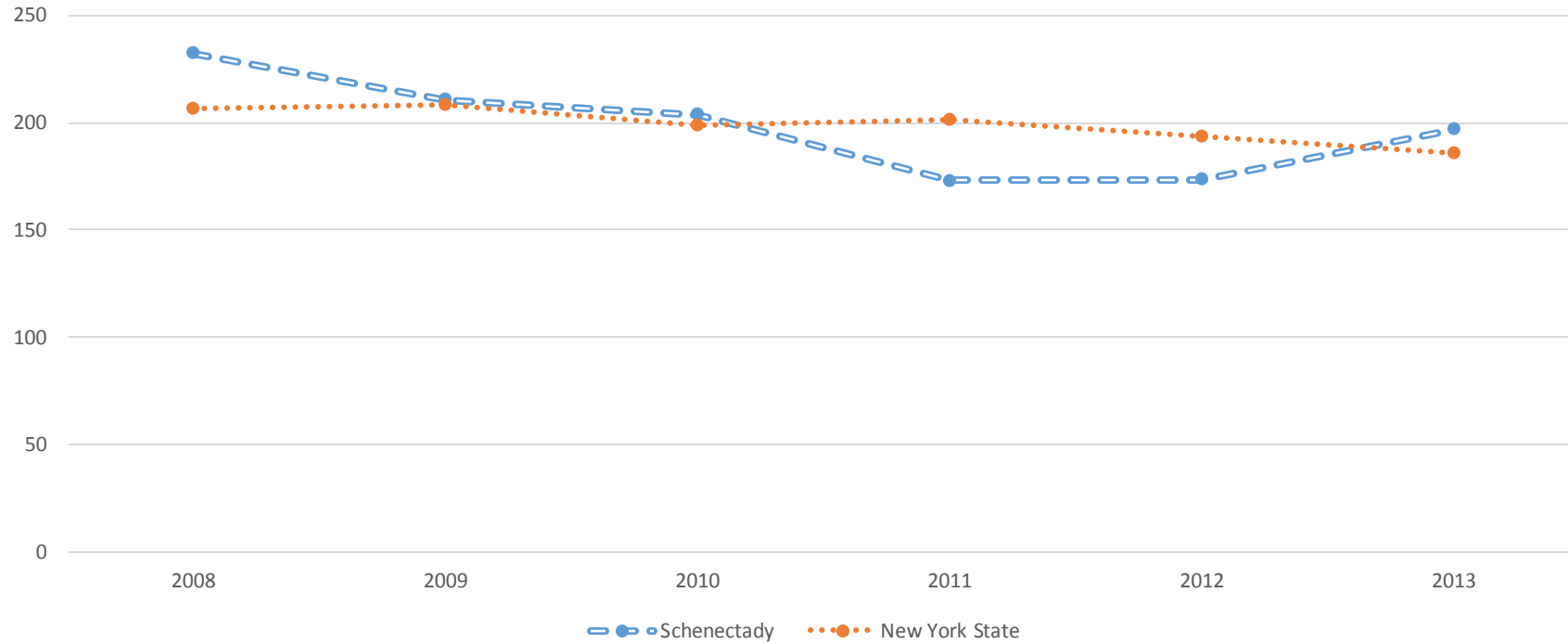


	Schenectady		Upstate
Fall ED Visits, ages 65+ per 10,000 (2011-2013)	468.4	Higher	389.2
Fall Hospitalizations ages 65+ per 10,000 (2013)	197.1	Higher	193.8

	Schenectady		Upstate
Fall ED Visits, ages 1-4 per 10,000 (2013)	583.5	Higher	462.1
Fall Hospitalizations ages 1-4 per 10,000 (2011-2013)	6.5	Lower	8.5



Age-Adjusted Fall Hospitalization Rate ages 65 + per 10,000 population for New York State and Schenectady County, 2008-2013



	2008	2009	2010	2011	2012	2013
Schenectady	232.2	210.7	203.7	173	173.4	197.1
New York State	206.5	208.8	198.5	201.5	193.4	186

EQUITY



Fall Hospitalizations per 10,000 by Age, 2011-2013



	Schenectady	Upstate
65-74 years	77.6	81.0
75-84 years	199.4	229.8
85 + years	483.4	599.3

Fall Indicators ages 65+ per 10,000 by Gender, 2011-2013



Age- Adjusted Hospitalizations

	Schenectady	Capital Region
Male	137.3	147.0
Female	191.0	210.3

Age- Adjusted ED Visits

	Schenectady	Capital Region
Male	380.4	270.4
Female	528.6	397.1

Fall Hospitalizations ages 65+ per 10,000 by Race/Ethnicity, 2011-2013



	Schenectady	Upstate
White non-Hispanic	167.6	194.4
Black non-Hispanic	82.2	105.2
Hispanic	110.0	291.2

Top Neighborhood Rates

Source: SPARCS data as of December 2014



ED Visits

Schenectady- 468.4

Upper State St. – 1,208.6

Stockade- 791.8

Hamilton Hill- 579.1

Upstate- 389.2

Hospitalizations

Schenectady- 197.1

Upper State St. – 387.8

Stockade- 272.5

Hamilton Hill- 227.2

Upstate- 193.8

Falls Summary

- **1,205 ED visits due to falls in the 65+ years population in Schenectady.**
- **474 Hospitalizations due to falls in the 65+ years population in Schenectady.**
- **418 ED visits due to falls in the 1-4 years population in Schenectady.**
- **3 Hospitalizations due to falls in the 1-4 years population in Schenectady.**



Falls in the Elderly Summary

- **Schenectady County had higher rates for both ED visits and Hospitalizations due to falls in the 65+ year population than ROS, fall into the 3rd quartile for fall hospitalizations.**
- **Hospitalizations due to falls increased with age in the elderly population, with those 85+ being more likely to be hospitalized due to a fall.**
- **Fall Hospitalizations in the 65+ population decreased from 2010-2012, but spiked from 2012-2013 in Schenectady.**
- **The female population had 1.4 times the rate of fall ED visits and hospitalization rates compared to their male counterparts.**
- **The White non-Hispanic population had 2 times the fall hospitalization rate in the 65+ population when compared to the Black non-Hispanic population.**
- **High risk neighborhoods had 1.5 to 3.1 times the rate of fall ED visits and 1.2 to 2.0 times the hospitalization rates compared to ROS.**