

# **PROMOTE HEALTHY WOMEN, INFANTS, AND CHILDREN**

---





# **CHILD ACCESS TO CARE IN SARATOGA COUNTY**

---

# The Effect of Child Health Insurance on the Population

Source: 2013 NYS Medicaid and Child Health Plus Data as of July, 2015



	Saratoga	Capital Region
Number of children who did not have the recommended number of well child visits in govt. sponsored insurance programs per year* (2013)	1,536	11,000
Number of children 0-19 years without any kind of health insurance per year (2013)	1,713	8,400

\*Children aged 0-15 months, 3-6 years and 12-21 years in Medicaid or Child Health Plus Programs.

# Child Health Insurance Indicators and Significance Compared To New York State (excl. NYC)

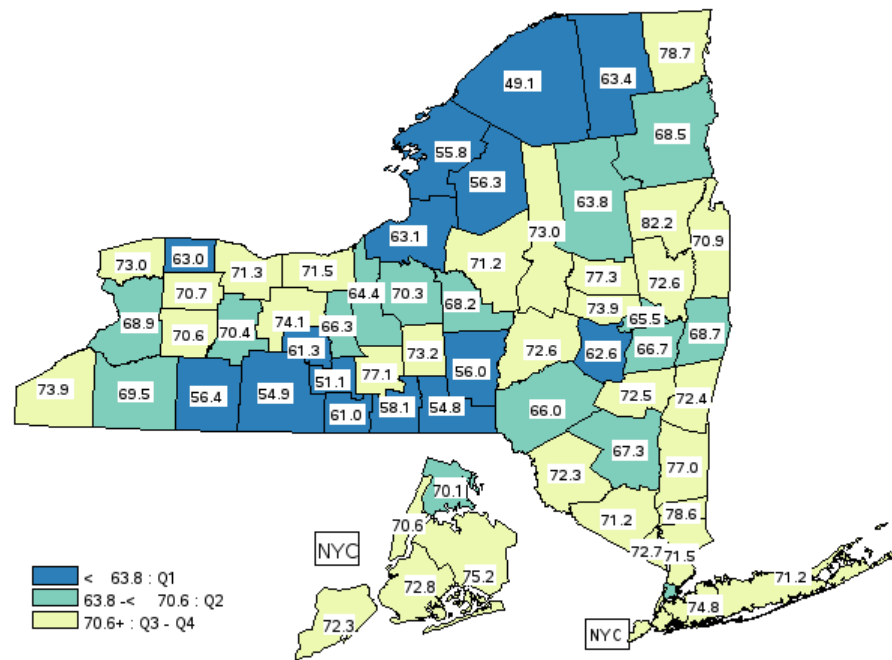
Source: 2013 NYS Medicaid and Child Health Plus Data as of July 2015/ Census Data as of March 2015



	Saratoga		Capital Region		NYS
% of children who had the recommended number of well child visits in govt. sponsored insurance programs	72.6	Higher	68.5	Lower	70.3
% of children 0-19 years with any kind of health insurance	96.8	Higher	96.3	Higher	95.9

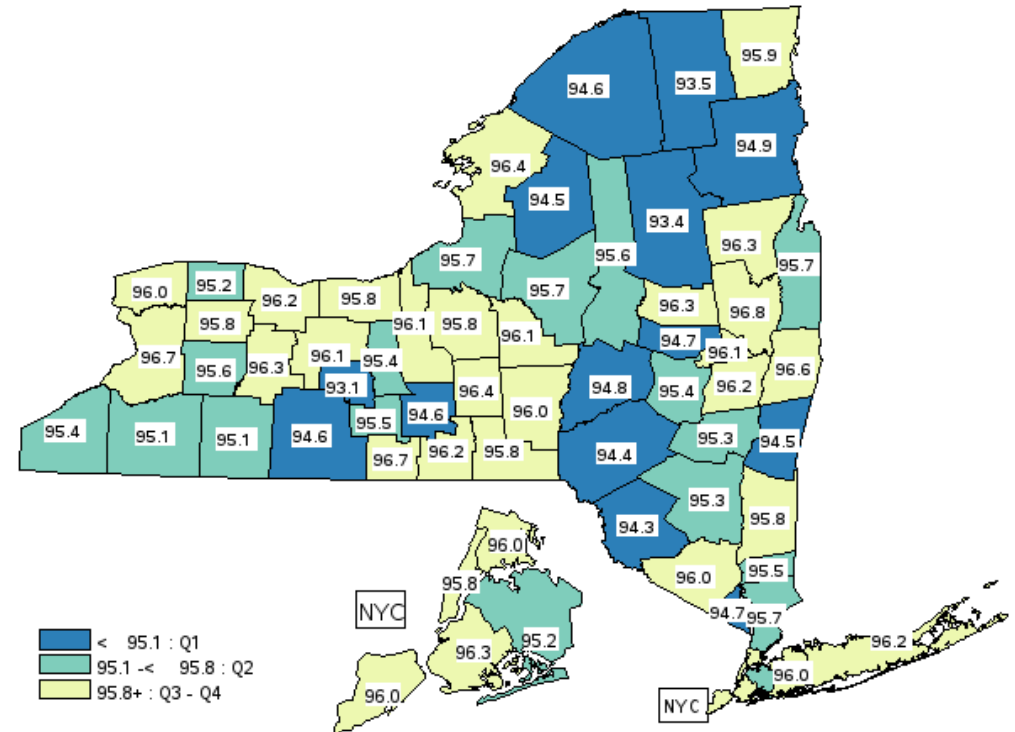
\* Children aged 0-15 months, 3-6 years and 12-21 years in Medicaid or Child Health Plus Programs.

### Percent of children who receive recommended number of well child visits, 2013



2013 NYS Medicaid and Child Health Plus Data as of July, 2015

### Percent of children with health insurance, 2013



2013 US Census Bureau data as of March 2015



# EQUITY

---

# Percent of Children Who Had the Recommended Number of Well Child Visits

Source: 2013 NYS Medicaid and Child Health Plus Data as of July, 2015



	Saratoga	Capital Region	Upstate
0-15 months	94.9	88.9	85.4
3-6 years	84.4	78.9	81.2
12-21 years	64.2	60.2	61.9

# Child Access to Care Summary



- Annually, Saratoga county has approximately 1,500 children who do not receive the recommended number of well child visits in government-sponsored insurance programs per year.
- Annually, Saratoga county has approximately 1,700 children aged 0-19 years without any kind of health insurance per year.
- Saratoga county had higher rates of children who had received the recommended number of well child visits in government-sponsored insurance programs per year when compared to NYS, excluding NYC.
- Saratoga county had a higher % of children aged 0-19 years without any kind of health insurance per year when compared to NYS, excluding NYC





# **CHILDHOOD LEAD IN SARATOGA COUNTY**

---

# The Effect of Childhood Lead on the Population,

2011-2013 NYS Child Lead Poisoning Prevention Program Data as of May 2015



	Saratoga	Capital Region
Number of children <72 months with confirmed blood lead levels 10+ µg/dl per year (2013)	26	246
Number of children without lead screening by ages 9-17 months per year (born in 2010)	1,473	5,250
Number of children without 2 lead screenings by ages 18-35 months per year (born in 2010)	1,874	7,032

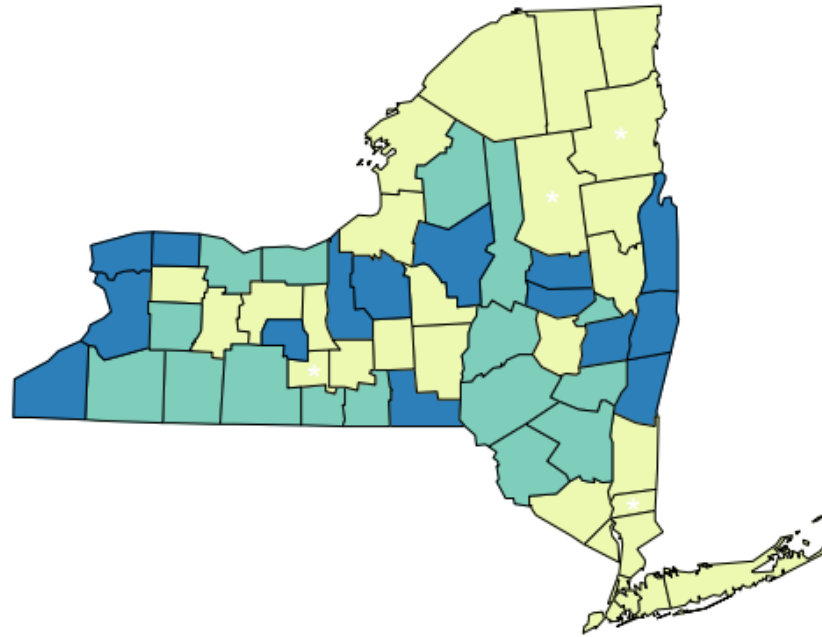
# Childhood Lead Indicators and Significance Compared to New York State (excl. NYC)

Source: 2011-2013 NYS Child Health Lead Poisoning Prevention Program Data as of May, 2015

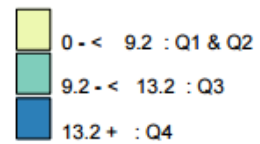


	Saratoga	Capital Region	Upstate
Confirmed blood lead levels 10+ ug/dl in children <72 months/1,000	3.4	Lower	4.9
% of children with lead screening by ages 9-17 months	36.1	Significantly Lower	65.0
% of children with lead screening by ages 18-35 months	27.9	Significantly Lower	65.6
% of children with 2 lead screenings by ages 18-35 months	18.7	Significantly Lower	55.1

## Confirmed blood lead levels 10+ug/dl in children <72 months/1,000

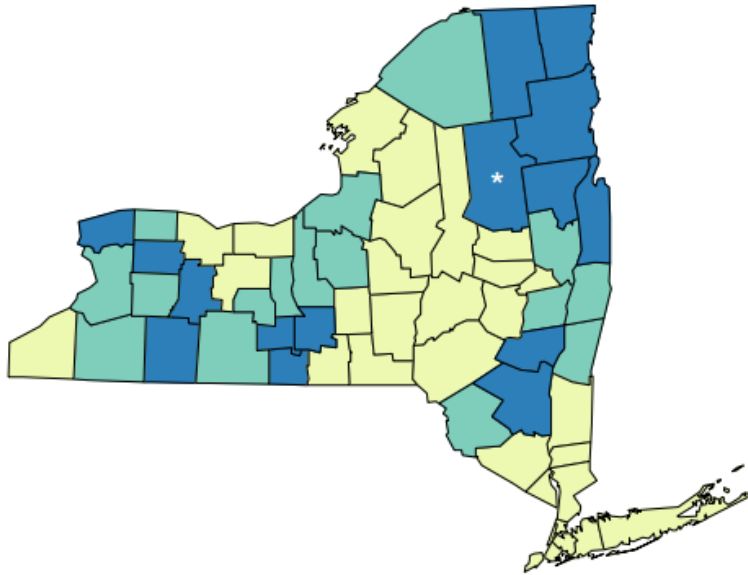


Incidence rate  
Counties Are Shaded Based On Quartile Distribution  
(\* Fewer than 10 events in the numerator, therefore the rate is unstable)

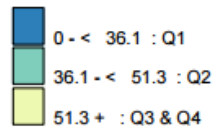


Source: 2011-2013 NYS Child Health Lead Poisoning Prevention Program Data as of May, 2015

### Percent of children born in 2010 with lead screening by ages 9-17 months

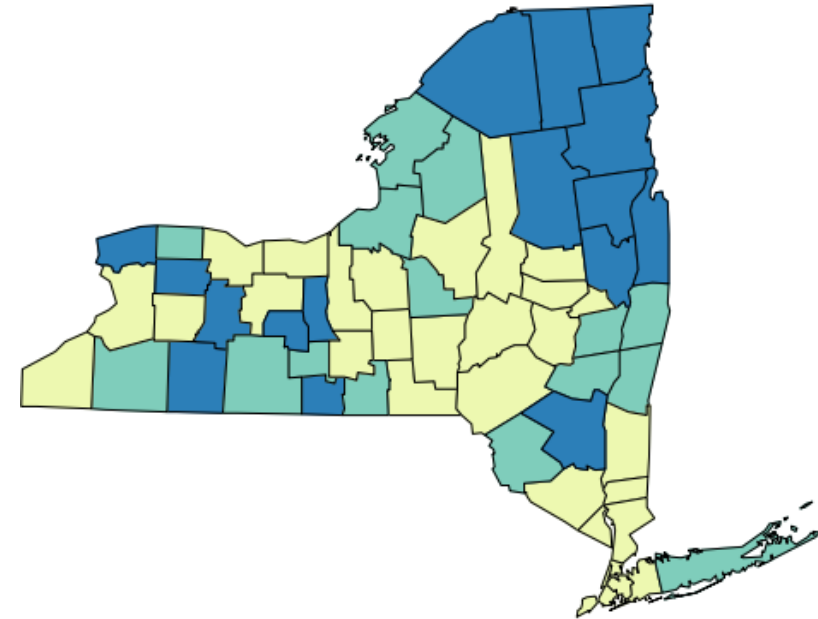


Percentage of children  
Counties Are Shaded Based On Quartile Distribution  
(\* Fewer than 10 events in the numerator, therefore the rate is unstable)

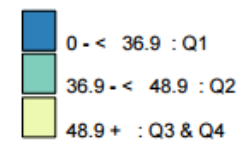


Source: 2010-2013 NYS Child Health Lead Poisoning Prevention Program Data as of May, 2015

### Percent of children born in 2010 with lead screening by ages 18-35 months



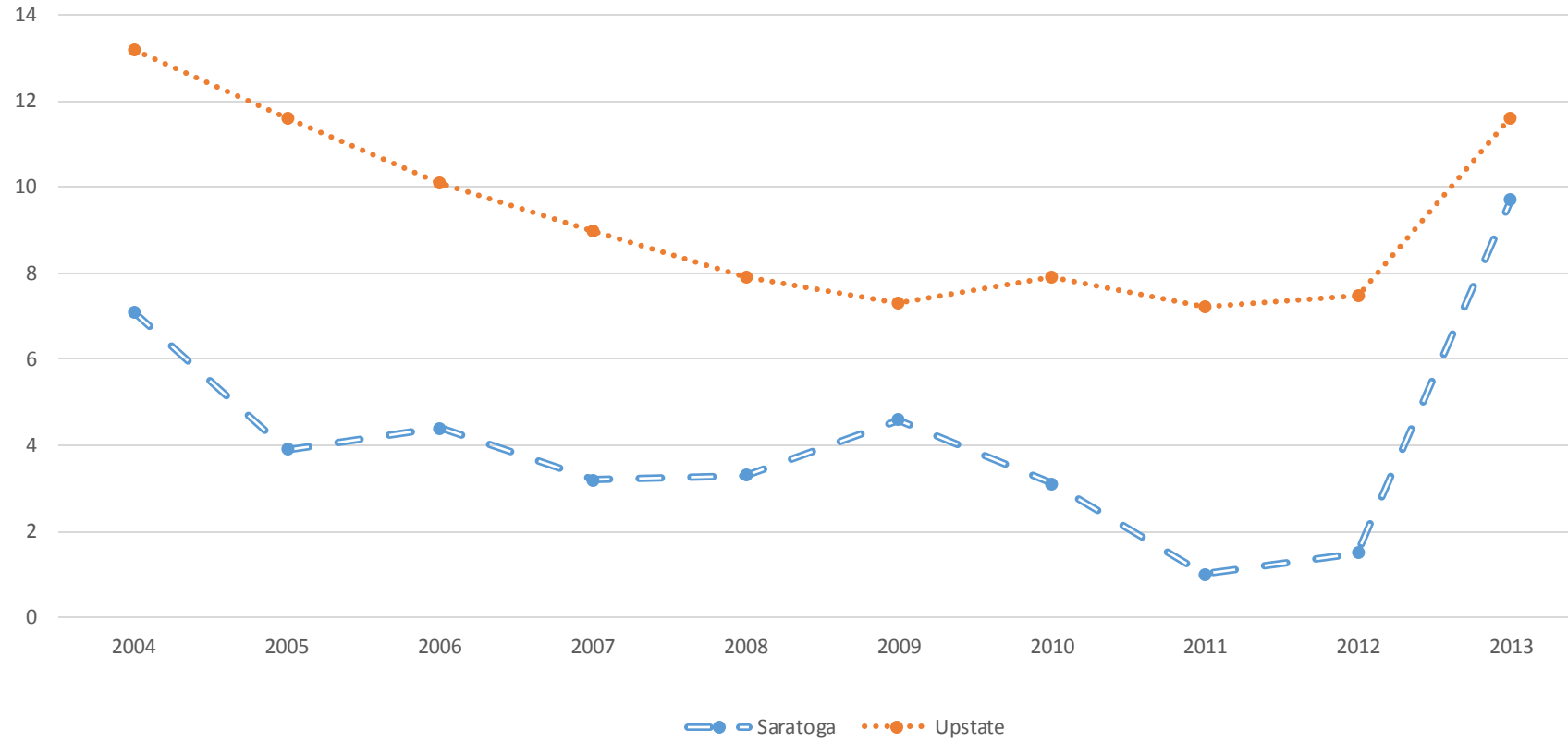
Percentage of children  
Counties Are Shaded Based On Quartile Distribution



Source: 2010-2013 NYS Child Health Lead Poisoning Prevention Program Data as of May, 2015

## Incidence Rate per 1,000 Among Children <72 Months of Age with a Confirmed Blood Lead Level $\geq 10\mu\text{g}/\text{dl}$ for New York State (excl. NYC) and Saratoga County, 2004-2013

Source: 2011-2013 NYS Child Health Lead Poisoning Prevention Program Data as of May 2015



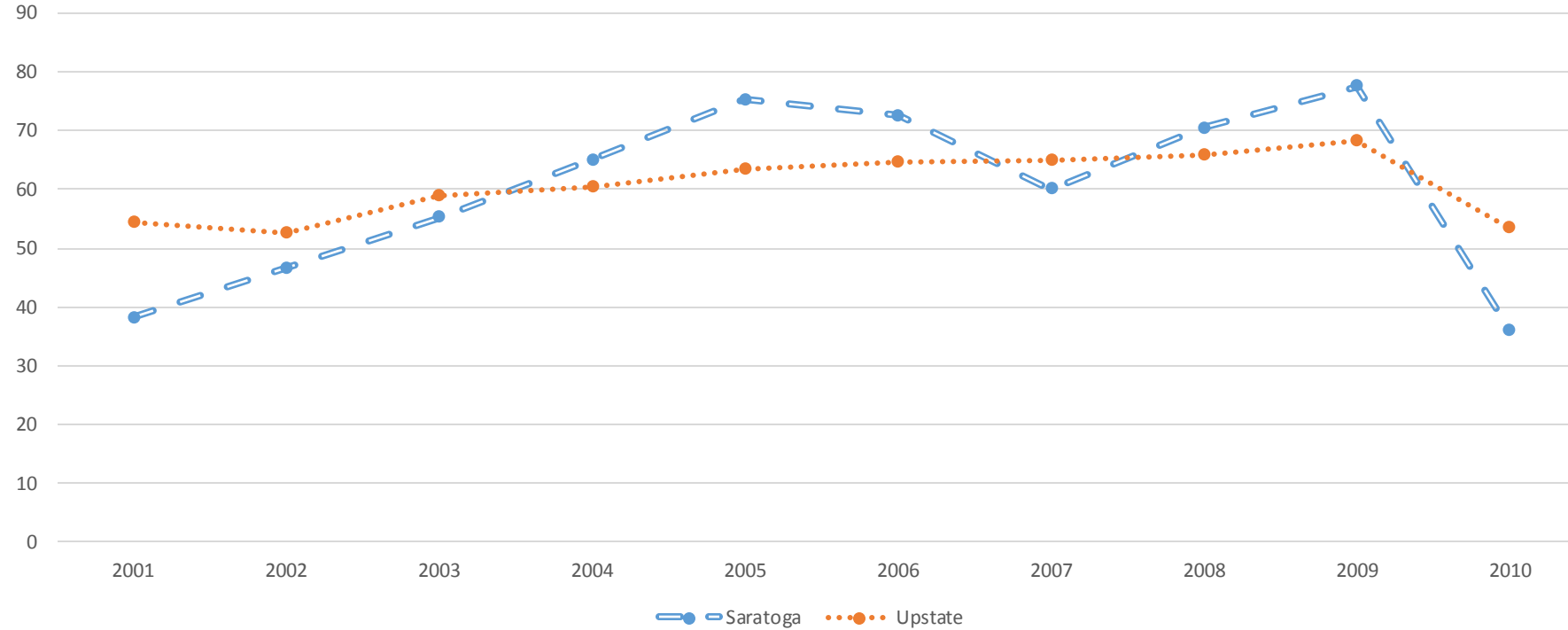
	2004	2005	2006	2007	2008	2009	2010	2011	2012	2013
<b>Saratoga</b>	7.1	3.9	4.4	3.2	3.3	4.6	3.1	1	1.5	9.7
<b>Upstate</b>	13.2	11.6	10.1	9	7.9	7.3	7.9	7.2	7.5	11.6





## Percentage of children born in 2001-2010 with a lead screening by ages 9-17 months for NYS (excl. NYC) and Saratoga County

Source: 2011-2013 NYS Child Health Lead Poisoning Prevention Program Data as of May, 2015

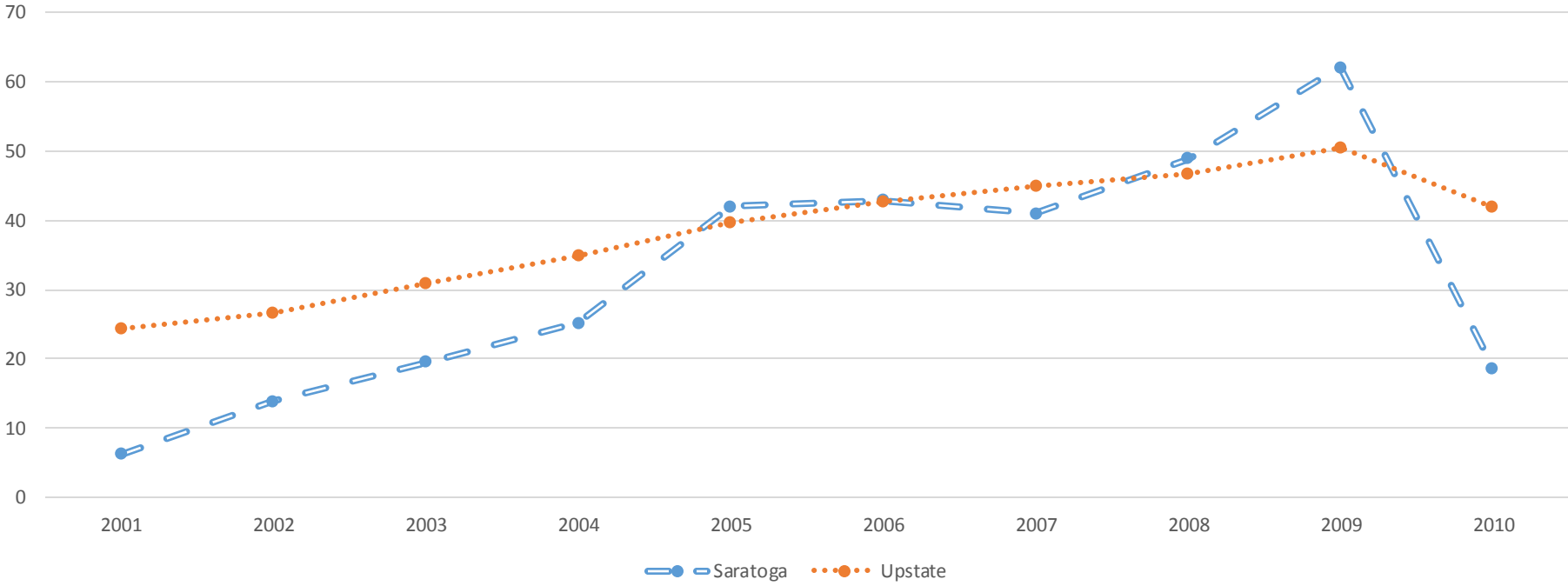


	2001	2002	2003	2004	2005	2006	2007	2008	2009	2010
Saratoga	38.2	46.6	55.2	65	75.3	72.5	60.1	70.5	77.5	36.1
Upstate	54.3	52.7	59	60.3	63.3	64.6	65	65.8	68.3	53.5



# Percentage of children born 2001-2010 with 2 lead screenings by ages 18-35 months for New York State (excl. NYC) and Saratoga County

Source: 2011-2013 NYS Child Health Lead Poisoning Prevention Program Data as of May, 2015



	2001	2002	2003	2004	2005	2006	2007	2008	2009	2010
Saratoga	6.2	13.9	19.5	25.2	42.1	42.9	41.1	48.9	62.2	18.7
Upstate	24.4	26.7	30.8	35	39.7	42.8	45.1	46.8	50.6	42.1



# Childhood Lead Summary



Annually, Schenectady county has:

- 26 children <72 months of age had a confirmed blood lead level of 10+  $\mu\text{g}/\text{dl}$
- 1,473 children (born in 2010) who did not have a lead screening, 9-17 months of age
- 1,874 children (born in 2010) who did not have 2 lead screenings, 18-35 months of age

# Childhood Lead Summary



- Saratoga county has a lower rate of confirmed blood lead levels 10+  $\mu\text{g}/\text{dl}$  in children <72 months/1,000 compared to NYS, excluding NYC.
- Saratoga has significantly lower % of children with one lead screening at ages 9-17 months, and % of children with one or two lead screenings for ages 18-35 months than that of NYS, excluding NYC.
- Lead screening rates show a marked drop-off with the 2010 birth cohort, and an increase in elevated blood lead levels in 2013



# **UNINTENDED PREGNANCY IN SARATOGA COUNTY**

---

# The Effect of Unintended Pregnancy on the Population

Source: 2011 Vital Statistics Data as of December, 2012



	<b>Saratoga</b>	<b>Capital Region</b>
<b>Number of Adolescent Pregnancies (ages 15-17) per year</b>	28	274
<b>Number of Unintended Pregnancies among live births per year</b>	401	2,346

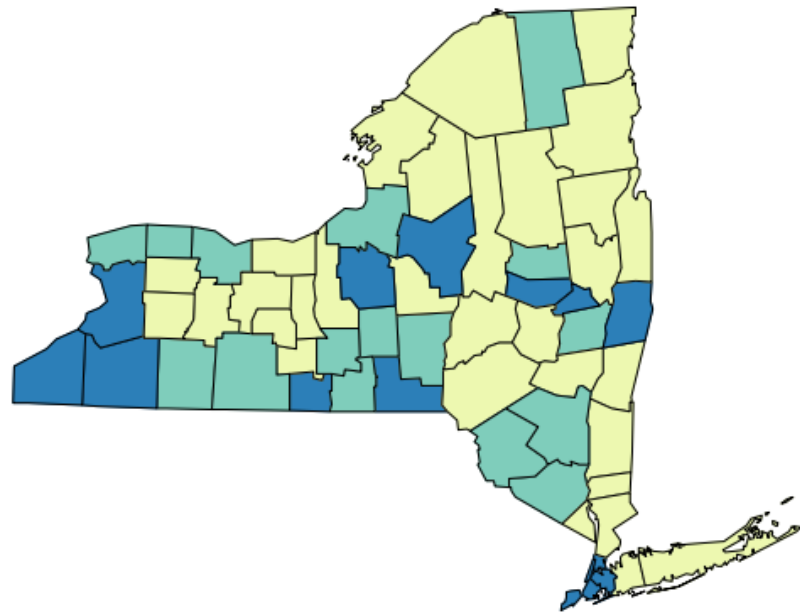
# Unintended Pregnancy Indicators and Significance Compared to New York State (excl. NYC)

2011-2013 Vital Statistics Data as of February, 2015

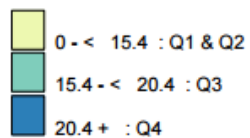


	Saratoga		Capital Region		Upstate
Adolescent Pregnancy rate (ages 15-17) per 1,000 females	6.5	Significantly Lower	18.0	Significantly Higher	13.0
% Unintended Pregnancies among live births	20.4	Lower	27.9	Slightly Higher	27.3

## Adolescent Pregnancy rate (ages 15-17) per 1,000 females, 2011-2013



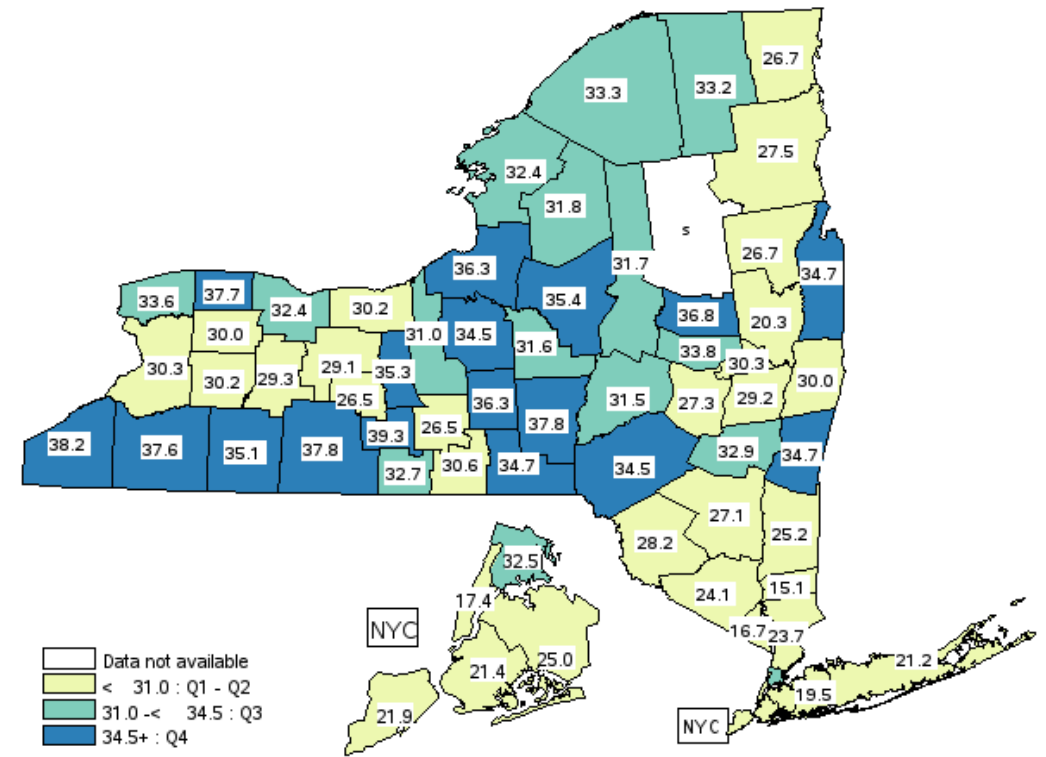
Pregnancy rate  
Counties Are Shaded Based On Quartile Distribution



Source: 2011-2013 Vital Statistics Data as of February, 2015

## % Unintended Pregnancies among live births, 2013

Data Source: Vital Records data as of April 2015

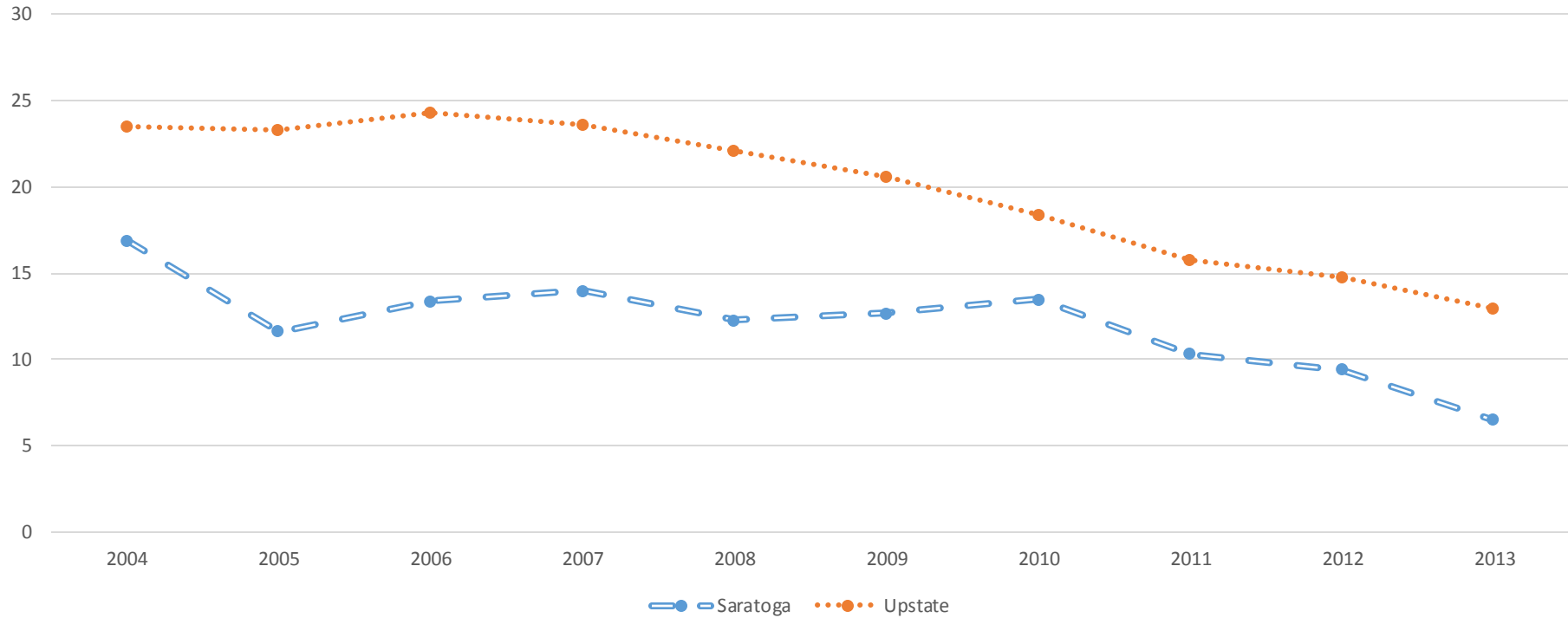


White box: Data not available  
 Light Yellow: < 31.0 : Q1 - Q2  
 Medium Green: 31.0 - < 34.5 : Q3  
 Dark Blue: 34.5+ : Q4





### Adolescent Pregnancy Rate per 1,000 Females (Ages 15-17 years) for New York State (excl. NYC) and Saratoga County, 2004-2013



	2004	2005	2006	2007	2008	2009	2010	2011	2012	2013
<b>Saratoga</b>	16.9	11.6	13.4	14	12.3	12.7	13.5	10.3	9.4	6.5
<b>Upstate</b>	23.5	23.3	24.3	23.6	22.1	20.6	18.4	15.8	14.8	13



# EQUITY

---



# Adolescent Pregnancy (ages 15-17) per 1,000 females by Race/Ethnicity, 2011-2013



	Saratoga	Capital Region	Upstate
<b>Ratio of Black non-Hispanics to White non-Hispanics</b>	2.58	3.92	3.98
<i>Rates*</i>	(15.9/9.8)	(Unavailable)	(38.9/9.7)
<b>Ratio of Hispanics to white non-Hispanics</b>	3.87	3.96	2.92
<i>Rates*</i>	(34.9/9.8)	(Unavailable)	(28.5/9.7)

# Ratios of Unintended Pregnancy among live births by Race/Ethnicity and SES,



	<b>Saratoga</b>	<b>Capital Region</b>	<b>Upstate</b>
<b>Ratio of Black non-Hispanics to White non-Hispanics</b>	Unavailable (s)	2.17	2.13
<i>Rates*</i>	(Unavailable (s))	(50.8/23.4)	(48.6/22.8)
<b>Ratio of Hispanics to White non-Hispanics</b>	Unavailable	1.79	1.47
<i>Rates*</i>	(Unavailable (s))	(41.8/23.4)	(33.6/22.8)
<b>Ratio of Medicaid births to non-Medicaid births</b>	2.13	1.90	1.90
<i>Rates*</i>	(40.3/18.9)	(45.8/24.1)	(40.6/21.4)

\*S= data do not meet reporting criteria

## Top Neighborhood Rates



Adolescent Pregnancy Rate per 1,000 women aged 15-19 years, 2011-2013

Saratoga County (19.4/1,000)

- South Glen Falls- 39.6
- North West- 32.7
- Waterford/Mechanicville- 25.1

Upstate- 28.6

## Unintended Pregnancy Summary

- Annually, Saratoga county has 28 pregnancies to adolescent women ages 15-17 and has 401 unintended pregnancies among live births.
- Saratoga's adolescent pregnancy rate was significantly lower than that of NYS, excluding NYC; unintended pregnancies for Saratoga county were lower than that of NYS, excluding NYC.
- The adolescent pregnancy trend is decreasing and is much lower than trends for NYS, excluding NYC.
- In Saratoga county, among live births, Medicaid births have 2.3 times as many unintended pregnancies in comparison to non-Medicaid births.





# **PRENATAL CARE IN SARATOGA COUNTY**

---

# The Effect of Prenatal Care on the Population



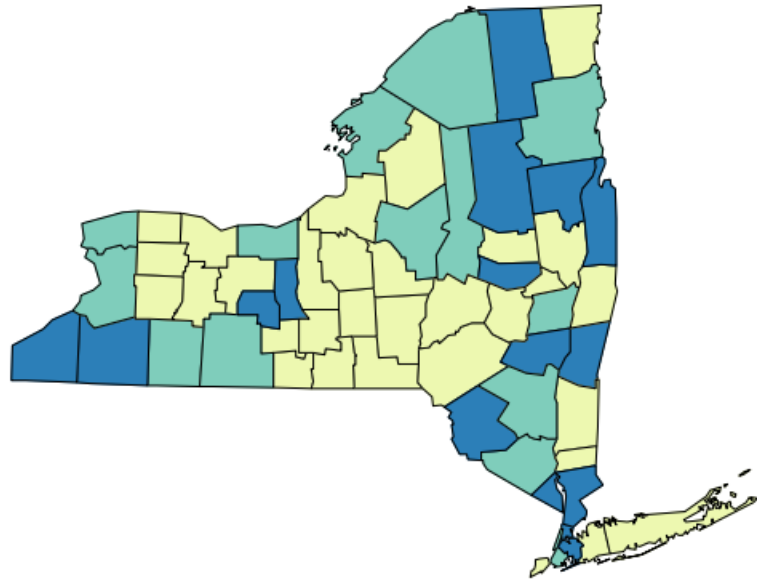
	<b>Saratoga</b>	<b>Capital Region</b>
<b>Number of births without early (1<sup>st</sup> trimester) prenatal care (PNC) per year</b>	<b>372</b>	<b>2,154</b>
<b>Number of births with late or no (3<sup>rd</sup> trimester) PNC per year</b>	<b>56</b>	<b>416</b>
<b>Number of births without adequate PNC (Kotelchuck) per year</b>	<b>463</b>	<b>2,603</b>

# Prenatal Care Indicators and Significance Compared to New York State (excl. NYC),

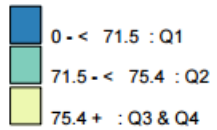


	<b>Saratoga</b>		<b>Capital Region</b>		<b>Upstate</b>
% of births with early (1 <sup>st</sup> trimester) prenatal care	78.1	Significantly Higher	75.4	Slightly Higher	76.0
% of births with late or no prenatal care	3.4	Lower	4.8	Higher	4.2
% of births with adequate prenatal care (Kotelchuck)	74.3	Significantly Higher	70.1	Slightly Higher	69.5

### Percentage of births with early PNC, 2011-2013

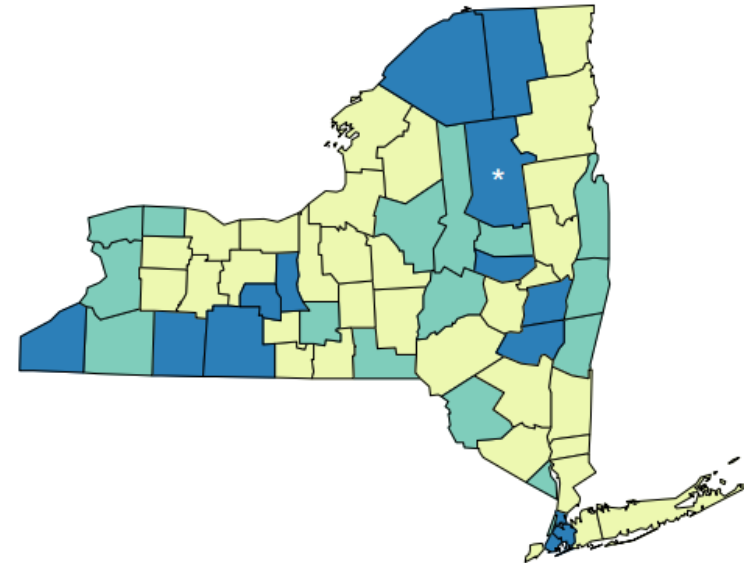


Percentage of births  
Counties Are Shaded Based On Quartile Distribution

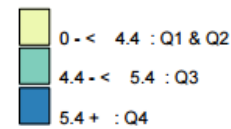


Source: 2011-2013 Vital Statistics Data as of February, 2015

### Percentage of births with late or no PNC, 2011-2013



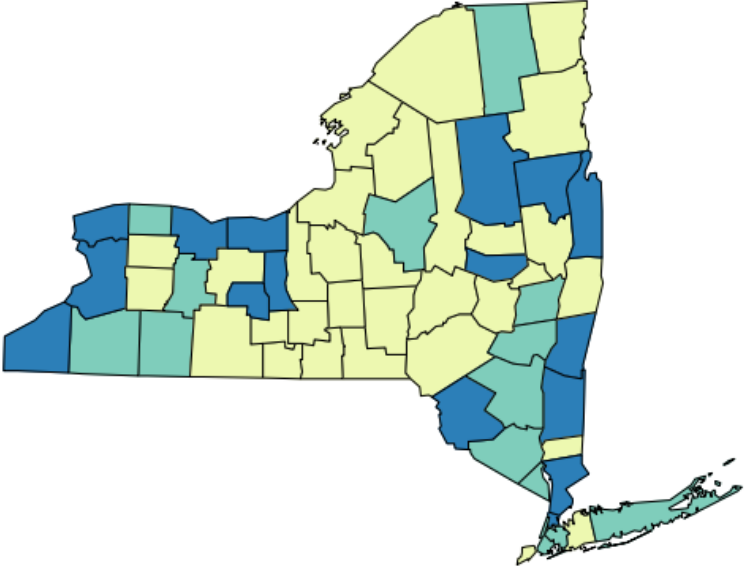
Percentage of births  
Counties Are Shaded Based On Quartile Distribution  
(\* Fewer than 10 events in the numerator, therefore the rate is unstable)



Source: 2011-2013 Vital Statistics Data as of February, 2015



### Percentage of births with adequate PNC (Kotelchuck), 2011-2013



Percentage of births  
Counties Are Shaded Based On Quartile Distribution

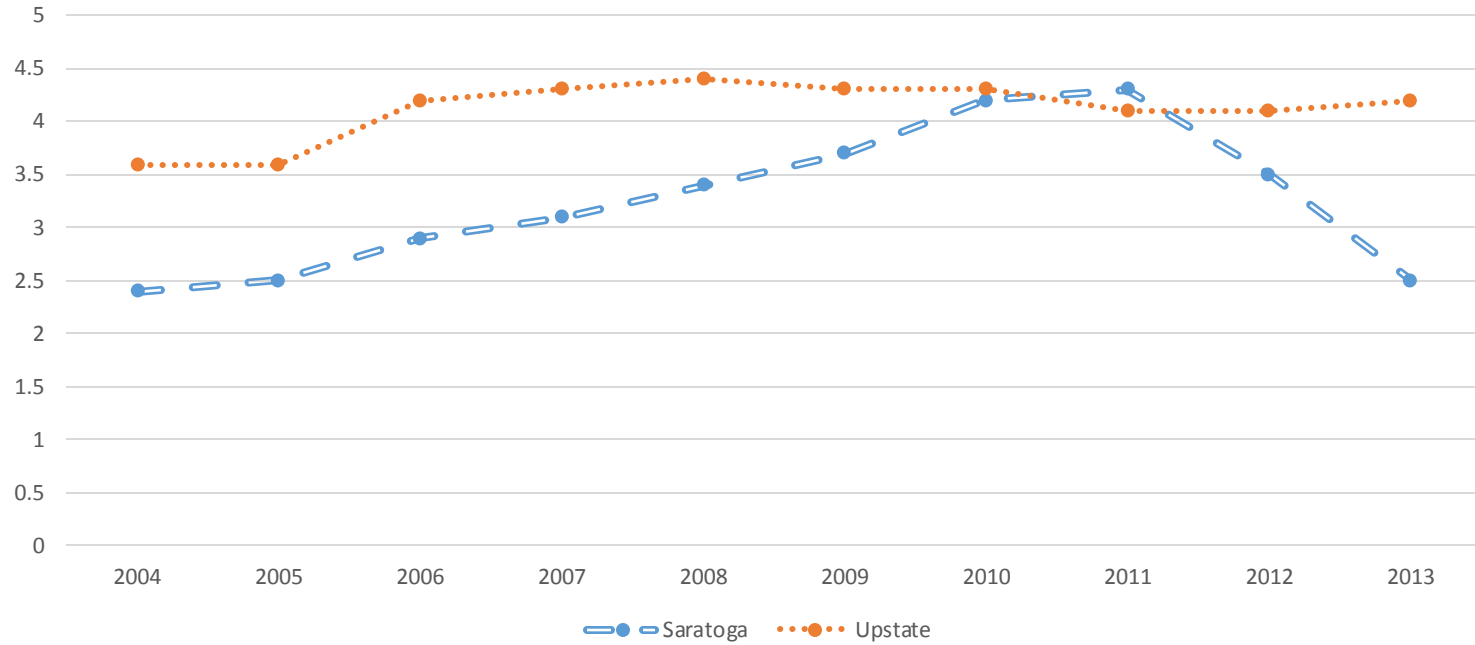
- 0 - < 64.2 : Q1
- 64.2 - < 69.7 : Q2
- 69.7+ : Q3 & Q4

Source: 2011-2013 Vital Statistics Data as of February, 2015



## Percent of births with late or no prenatal care for New York State (excl. NYC) and Saratoga County; 2004-2013

Source: 2011-2013 Vital Statistics Data as of February, 2015



	2004	2005	2006	2007	2008	2009	2010	2011	2012	2013
<b>Saratoga</b>	2.4	2.5	2.9	3.1	3.4	3.7	4.2	4.3	3.5	2.5
<b>Upstate</b>	3.6	3.6	4.2	4.3	4.4	4.3	4.3	4.1	4.1	4.2



# EQUITY

---

# Prenatal Care Indicators by Race/Ethnicity, 2011-2013



<b>% Early PNC</b>	<b>Saratoga</b>	<b>Upstate</b>
White non-Hispanic	75.8	79.2
Black non-Hispanic	S	63.5
Hispanic	74.5	66.5

<b>% Adequate PNC</b>	<b>Saratoga</b>	<b>Upstate</b>
White non-Hispanic	75.0	72.7
Black non-Hispanic	S	54.1
Hispanic	68.9	59.5

\*S= data do not meet reporting criteria

## Top Neighborhood Rates

### Percent Late or No Prenatal Care

- Saratoga- 3.5%
  - Saratoga Springs- 5.3%
  - South Glen Falls- 4.2%
  - Ballston Spa- 4.2%
- Upstate- 4.1%



## Prenatal Care Summary



- Annually, Saratoga county has:
  - 372 births without early (1<sup>st</sup> trimester) prenatal care
  - 56 births with late (3<sup>rd</sup> trimester) or no prenatal care
  - 463 births without adequate (Kotelchuk) prenatal care
- The percentage of births with early prenatal care and the percentage of births with adequate prenatal care were both significantly higher for Saratoga in comparison to both NYS, excluding NYC.
- Saratoga county has a trend in late or no prenatal care that has been decreasing since 201 and much lower than that of NYS, excluding NYC



# **LOW BIRTHWEIGHT AND PREMATURE BIRTHS IN SARATOGA COUNTY**

---

# The Effect of Premature Birth and Low Birthweight on the Population

Source: 2011-2013 Vital Records data, as of April 2015



	<b>Saratoga</b>	<b>Capital Region</b>
<b>Number of Preterm births (2013)</b>	202	1,042
<b>Number of Low Birthweight births (2013)</b>	142	727



# Premature Birth and Low Birthweight Compared to NYS (excl. NYC)

Source: 2011-2013 Vital Records data, as of April 2015



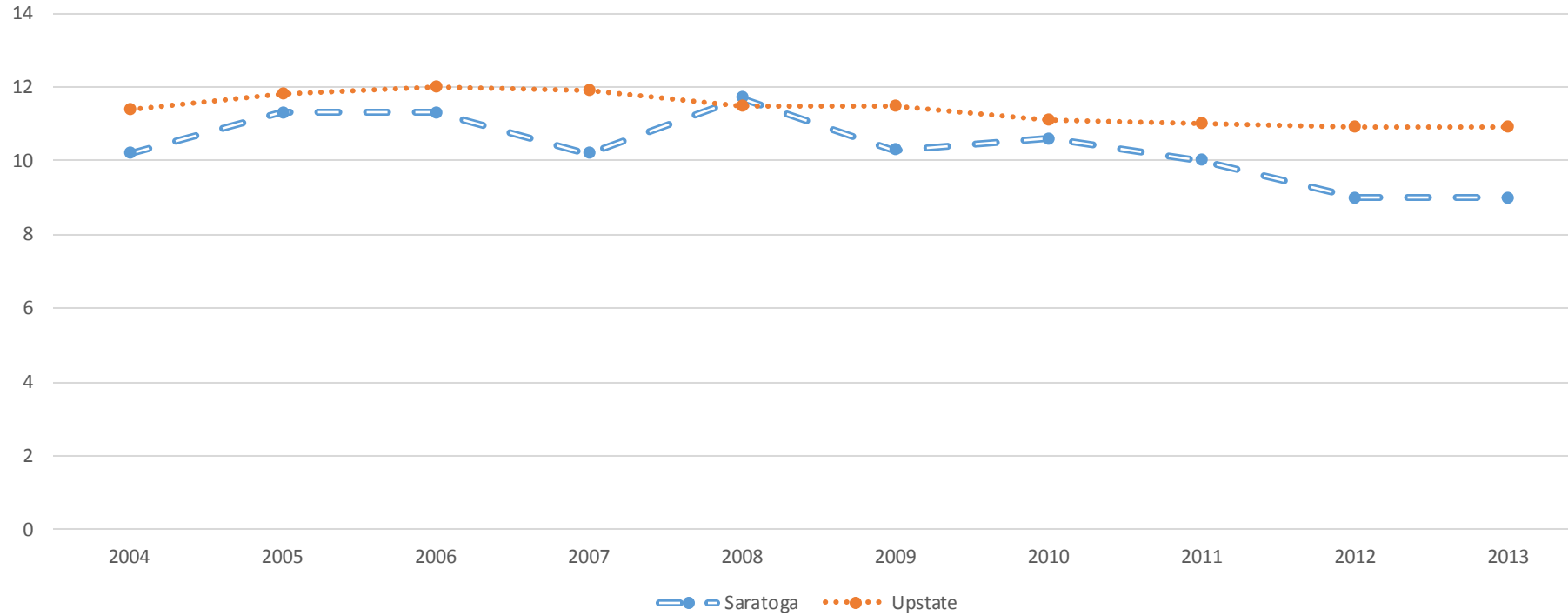
	Saratoga		Capital Region		Upstate
<b>% of Preterm births (2013)</b>	9.0	Lower	10.7	Slightly Lower	10.9
<b>% Low birthweight births (2011-2013)</b>	6.6	Significantly Lower	7.9	Slightly Higher	7.6





## Percentage of Preterm Births (<less than 37 weeks of Gestation) in NYS (excl. NYC) and Saratoga County, 2004-2013

Source: 2011-2013 Vital Statistics Data as of February, 2015

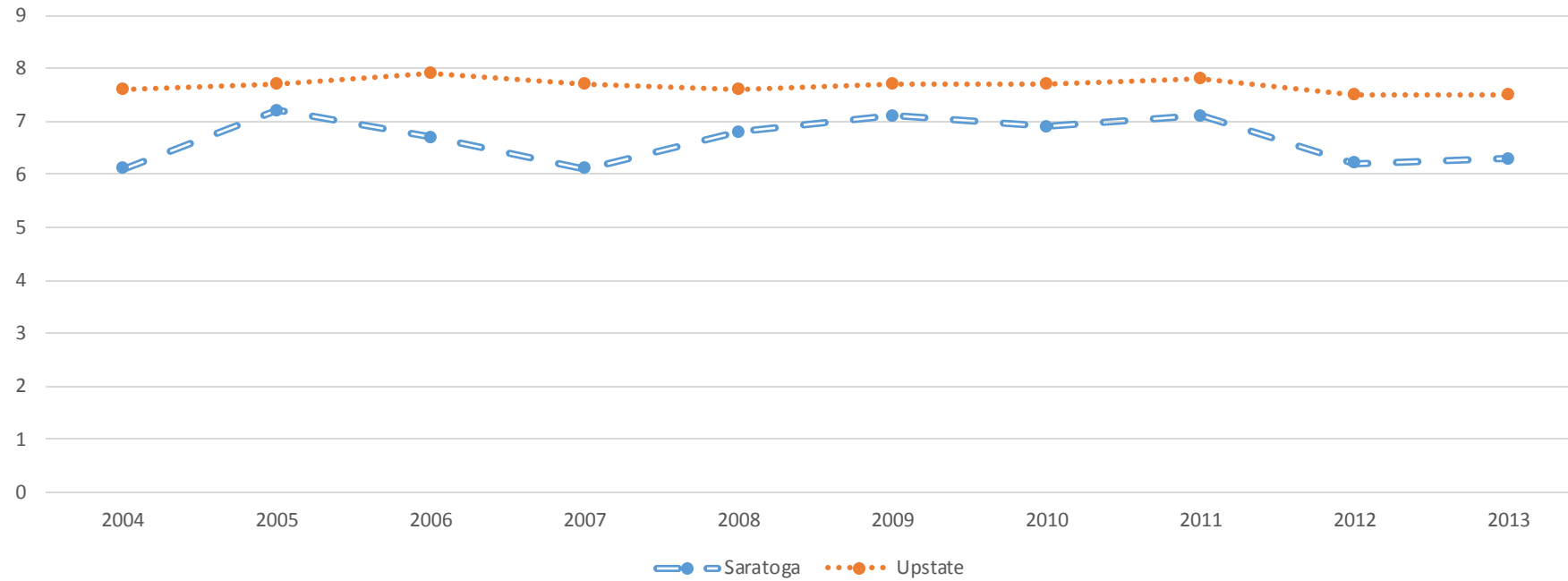


	2004	2005	2006	2007	2008	2009	2010	2011	2012	2013
<b>Saratoga</b>	10.2	11.3	11.3	10.2	11.7	10.3	10.6	10	9	9
<b>Upstate</b>	11.4	11.8	12	11.9	11.5	11.5	11.1	11	10.9	10.9



## Percentage of Low Birthweight Births in NYS (excl. NYC) and Saratoga County, 2004-2013

Source: 2011-2013 Vital Statistics Data as of February, 2015



	2004	2005	2006	2007	2008	2009	2010	2011	2012	2013
<b>Saratoga</b>	6.1	7.2	6.7	6.1	6.8	7.1	6.9	7.1	6.2	6.3
<b>Upstate</b>	7.6	7.7	7.9	7.7	7.6	7.7	7.7	7.8	7.5	7.5

# Percentages of Preterm Births (<37 weeks) by Race/Ethnicity and SES

2011-2013 Vital Statistics Data as of February, 2015



	Saratoga	Capital Region	Upstate
<b>% of Black non-Hispanics</b>	(Unavailable (s))	15.1	15.4
<b>% of White non-Hispanics</b>	10.0	10.3	10.0
<b>% of Hispanics</b>	8.3	10.5	11.9
<b>% of Medicaid Births</b>	10.1	10.8	11.8
<b>% of Non-Medicaid Births</b>	9.3	10.9	10.5

\*S= data do not meet reporting criteria

## Percentages of Low Birthweight Births (<2,500 grams) by Race/Ethnicity and SES, 2010-2012



	<b>Saratoga</b>	<b>Upstate</b>
<b>% of Black non-Hispanic</b>	(Unavailable (s))	13.1
<b>% White non-Hispanic</b>	6.7	6.9
<b>% of Hispanic</b>	4.4	7.3

## Low Birthweight and Premature Births Summary



- Annually, the Saratoga county had 202 preterm births and 142 low birthweight births.
- Saratoga county had lower percentages of preterm births and significantly lower percentages of low birthweight births in comparison to NYS, excluding NY, and the Capital Region.
- Saratoga county has a steady trend for % of preterm births since 2012; Saratoga has had a slightly increasing trend % of low birthweight births since 2012
- When comparing prematurity rates, the Medicaid population actually had higher rates compared to non-Medicaid population.