



# PROMOTE A HEALTHY AND SAFE ENVIRONMENT

---



# CRIME IN SARATOGA COUNTY

---

## Crime Indicators for Saratoga County Compared to New York State (excl. NYC), 2014



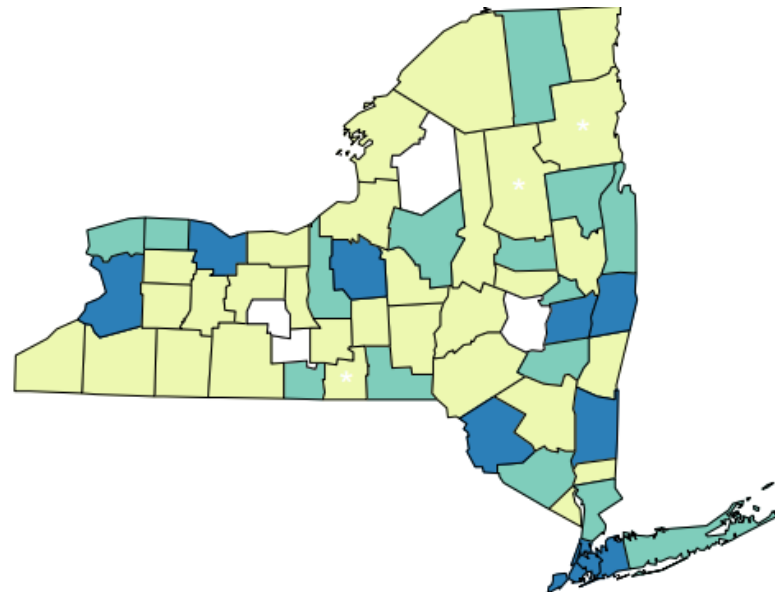
	Saratoga	Capital Region
Number of Assault ED visits per year (2013)	447	3,544
Number of Assault Hospitalizations per year (2013)	19	210
Number of firearm-related crimes known to the police per year	12	365
Number of violent index crimes known to the police per year	213	2,561
Number of property index crimes known to the police per year	2,800	20,743
Young Adult Arrests-Drug Use/Possession/Sale/10,000	102	623

## Crime Indicators and Significance for Saratoga County Compared to New York State (excl. NYC), 2014

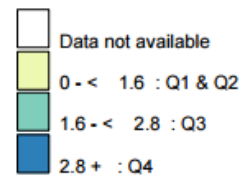


	Saratoga		Upstate
Age-Adjusted Assault ED visits/10,000	22.2	Lower	37.1
Age-Adjusted Assault Hospitalizations/10,000	1.0	Significantly Lower	2.7
Firearm-related crime/10,000	0.5	Lower	4.1
Violent crime/10,000	9.5	Lower	22.3
Property crime/10,000	124.3	Lower	178.5
Young Adult Arrests-Drug Use/Possession/Sale/10,000	60.5	Lower	69.7

# Age-Adjusted Assault Hospitalizations per 10,000 population

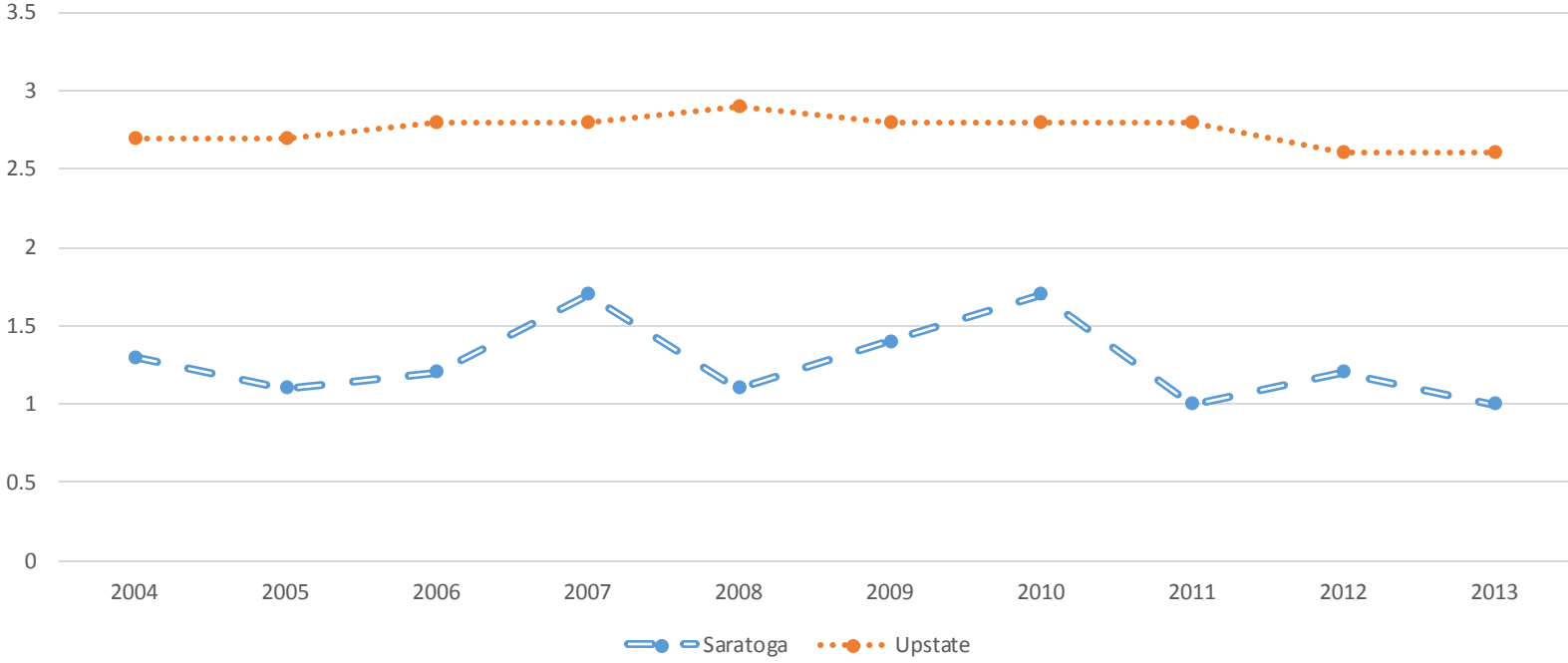


Hospital Discharge Rate  
Counties Are Shaded Based On Quartile Distribution  
(\* Fewer than 10 events in the numerator, therefore the rate is unstable)



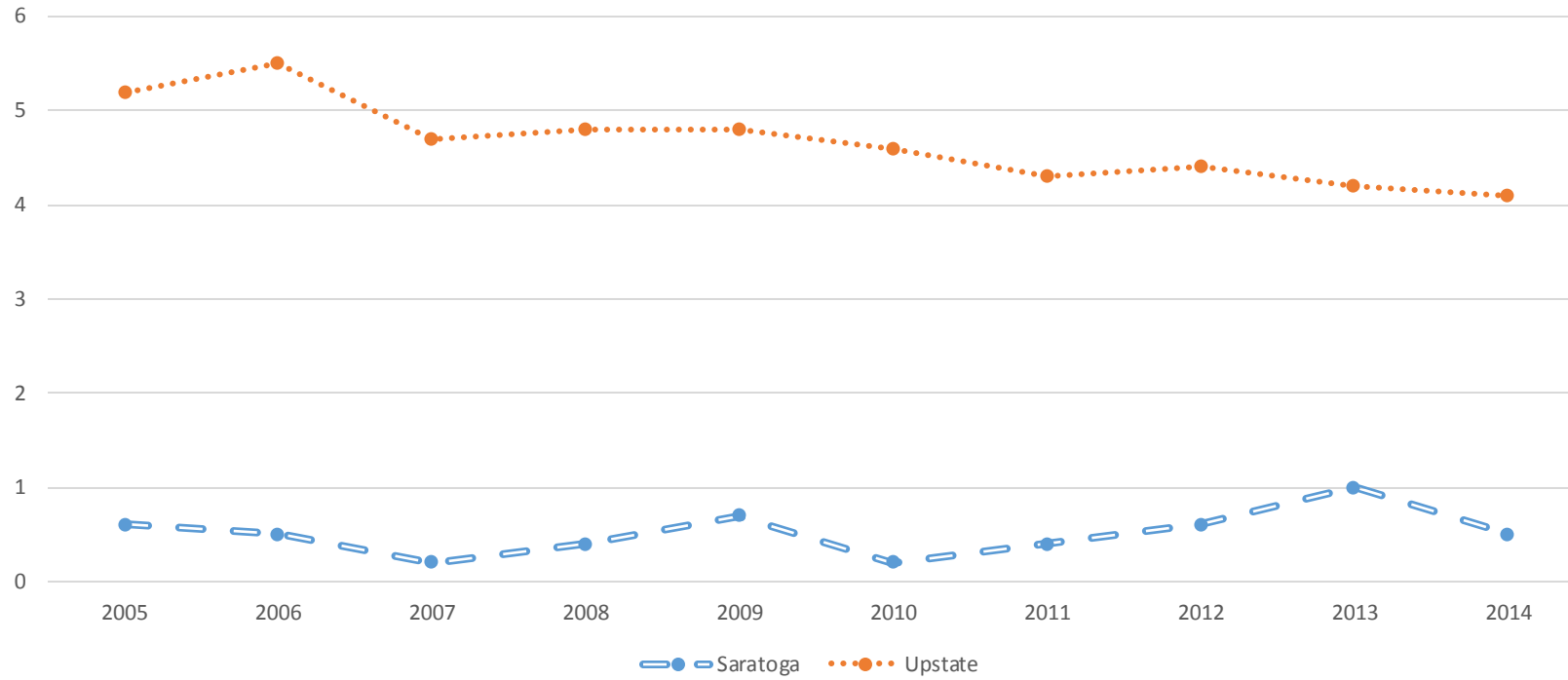
Source: 2011-2013 SPARCS Data as of December, 2014

**Age-Adjusted Assault Hospitalization Rate per 10,000 population for New York State (excl. NYC) and Saratoga County, 2004-2013**



	2004	2005	2006	2007	2008	2009	2010	2011	2012	2013
<b>Saratoga</b>	1.3	1.1	1.2	1.7	1.1	1.4	1.7	1.0	1.2	1.0
<b>Upstate</b>	2.7	2.7	2.8	2.8	2.9	2.8	2.8	2.8	2.6	2.6

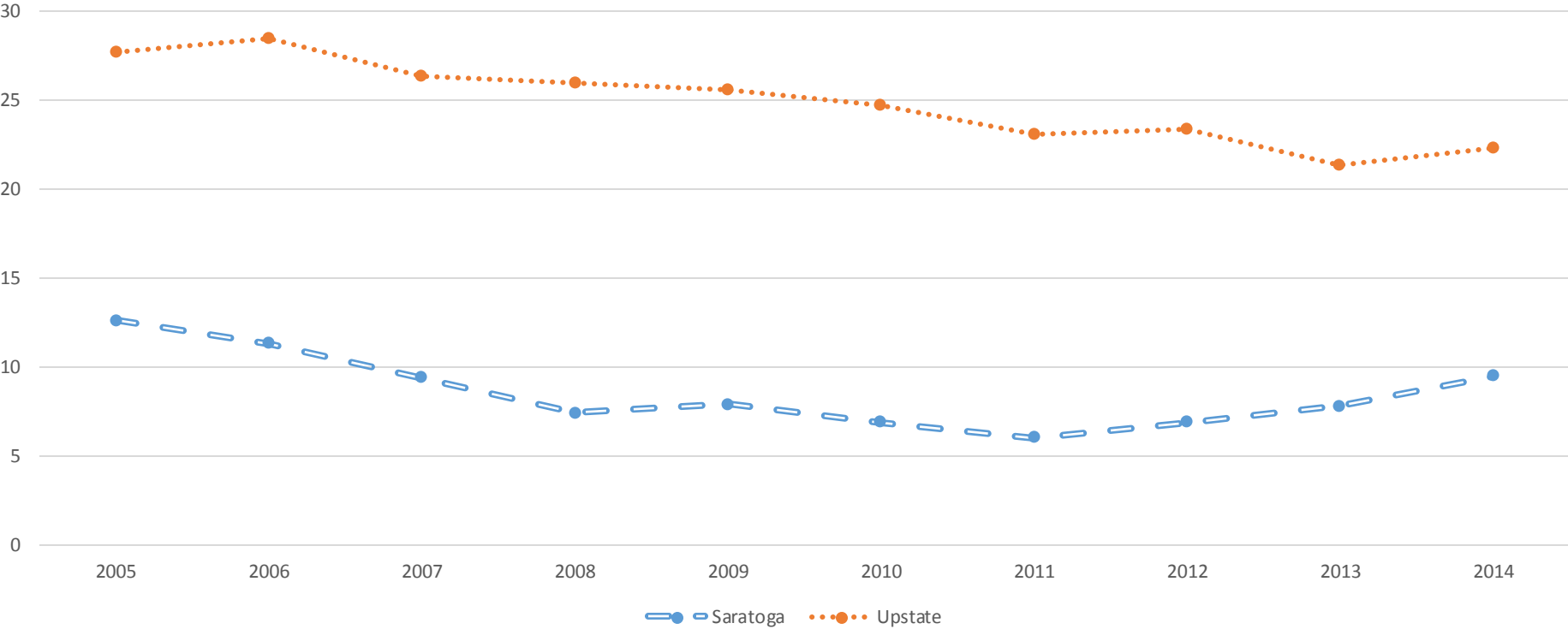
### Firearm-Related Index Crime Rate Per 10,000 population for New York State (excl. NYC) and Saratoga County, 2005-2014



	2005	2006	2007	2008	2009	2010	2011	2012	2013	2014
<b>Saratoga</b>	0.6	0.5	0.2	0.4	0.7	0.2	0.4	0.6	1	0.5
<b>Upstate</b>	5.2	5.5	4.7	4.8	4.8	4.6	4.3	4.4	4.2	4.1



### Violent Crime Rate per 10,000 population for New York State (excl. NYC) and Saratoga County, 2005-2014

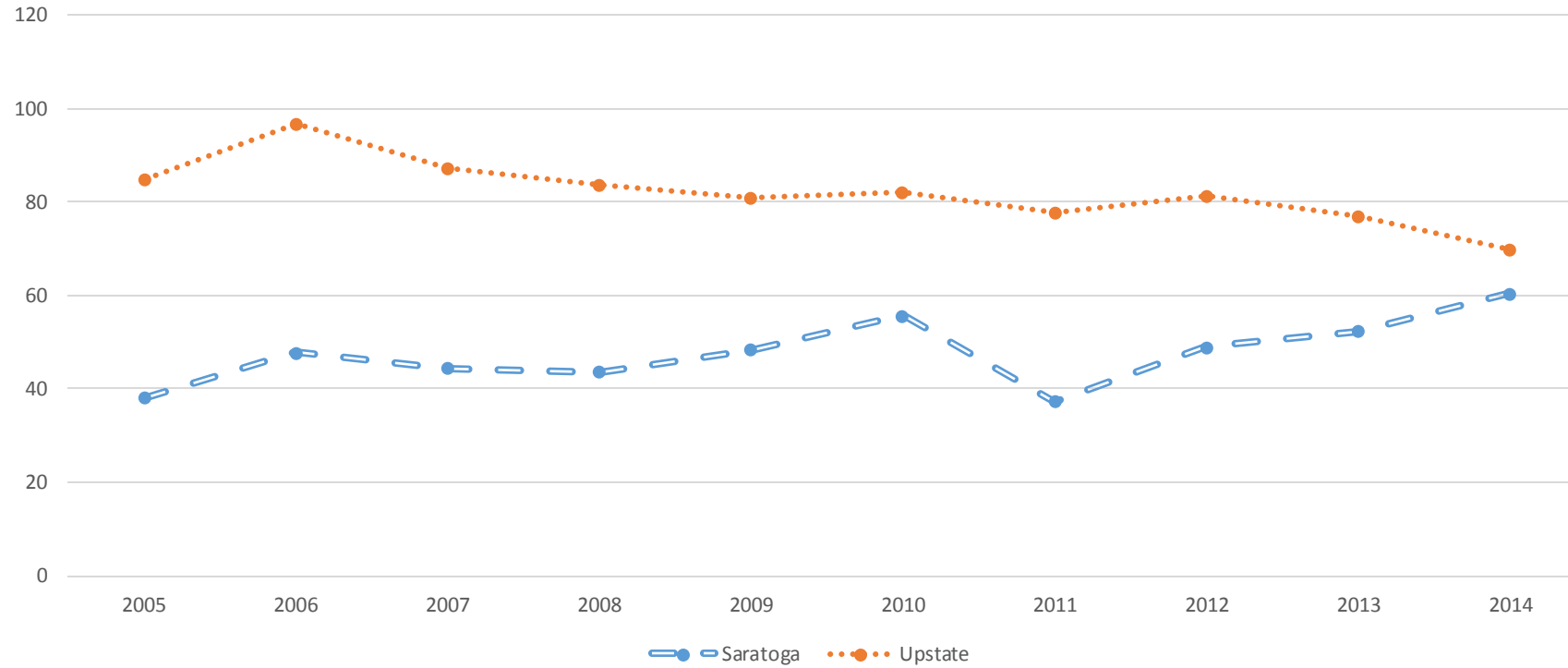


	2005	2006	2007	2008	2009	2010	2011	2012	2013	2014
<b>Saratoga</b>	12.6	11.3	9.4	7.4	7.9	6.9	6	6.9	7.8	9.5
<b>Upstate</b>	27.7	28.5	26.4	26	25.6	24.7	23.1	23.4	21.3	22.3





### Young Adult Arrests- Drug Use/Possession/Sale per 10,000 population for New York State (excl. NYC) and Saratoga County, 2005-2014



	2005	2006	2007	2008	2009	2010	2011	2012	2013	2014
<b>Saratoga</b>	38.2	47.9	44.4	43.6	48.5	55.8	37.3	49	52.4	60.5
<b>Upstate</b>	85	96.8	87.4	83.7	81	82.3	77.9	81.5	76.9	69.7



# EQUITY

---



## Assault Indicators by Gender, 2011-2013

Source: 2011-2013 SPARCS Data as of July, 2015

<u>Hospitalizations</u>	Saratoga	Capital Region
Male	1.6	3.7
Female	0.6	1.1

<u>ED Visits</u>	Saratoga	Capital Region
Male	25.5	46.5
Female	18.7	37.6



## Top Neighborhood Rates

### Assault ED Visits

**Saratoga- 22.2**

**North West- 38.7**

**South Glens Falls- 38.2**

**Waterford/Mechanicville- 30.9**

**Upstate- 37.1**

### Assault Hospitalizations

**Saratoga- 1.0**

**North West- 2.5**

**South Glens Falls- 1.7**

**Saratoga Springs- 1.6**

**Upstate- 2.7**

## Crime Summary



**Annually, Saratoga County has:**

- **447 Assault ED Visits**
- **19 Assault Hospitalizations**
- **12 Firearm-related Crimes**
- **213 Violent Crimes**
- **2,800 Property Crimes**
- **102 Young Adult Arrests for Drug Possession/Sale/Use**

## Crime Summary

- **Saratoga county had lower assault-related ED visits and hospitalizations in comparison to ROS.**
- **Saratoga county had lower rates firearm-related crimes, violent crimes, property crimes and young adult arrests for drug possession/sale/use.**
- **Assault hospitalization had a decreasing trend over the last 10 years.**
- **Violent crimes and Young Adult arrests for drug possession/sale/use have had an increasing trend since 2011.**
- **Males are 2.7 times as likely to be hospitalized due to an assault as their female counterparts in Saratoga county; Males are 1.3 times as likely to have an ED visit due to an assault as their female counterparts in Saratoga county.**





# FALLS IN SARATOGA COUNTY

---



# The Effect of Falls on the Population, ages 65+ years, 2013

	Saratoga	Capital Region
Number of ED Visits per year	1,109	5,300
Number of Hospitalizations per year	547	2,785

# The Effect of Falls on the Population, ages 1-4 years, 2013

	Saratoga	Capital Region
Number of ED Visits per year	211	1,771
Number of Hospitalizations per year	4	23



# Fall Indicators and Significance for Saratoga County Compared to NYS (excl. NYC)

Source: SPARCS data as of December 2014



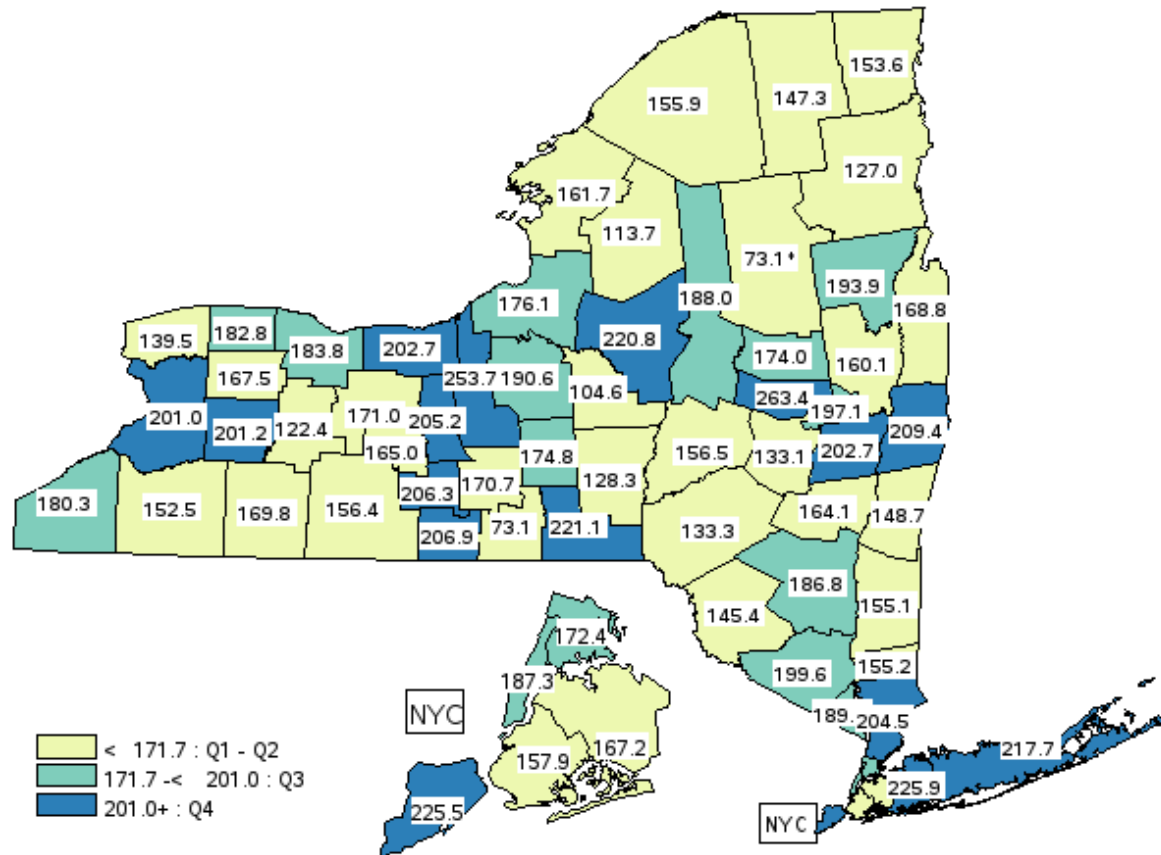
	Saratoga		Upstate
Fall ED Visits, ages 65+ per 10,000 (2011-2013)	332.1	Lower	389.2
Fall Hospitalizations ages 65+ per 10,000 (2011-2013)	160.1	Lower	193.8

	Saratoga		Upstate
Fall ED Visits, ages 1-4 per 10,000 (2011-2013)	223.8	Lower	462.1
Fall Hospitalizations ages 1-4 per 10,000 (2011-2013)	3.5	Lower	8.5

# Fall Hospitalizations, ages 65+ per 10,000

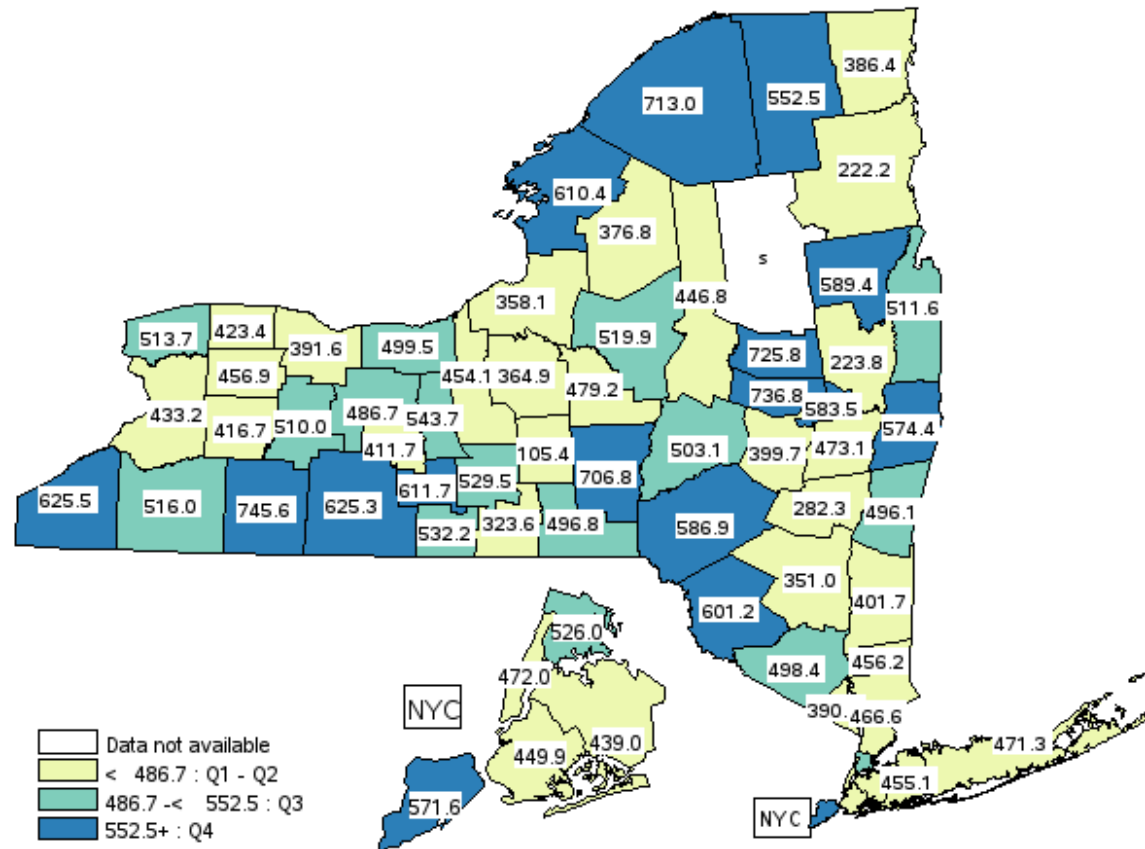


Data Source: SPARCS data as of December 2014



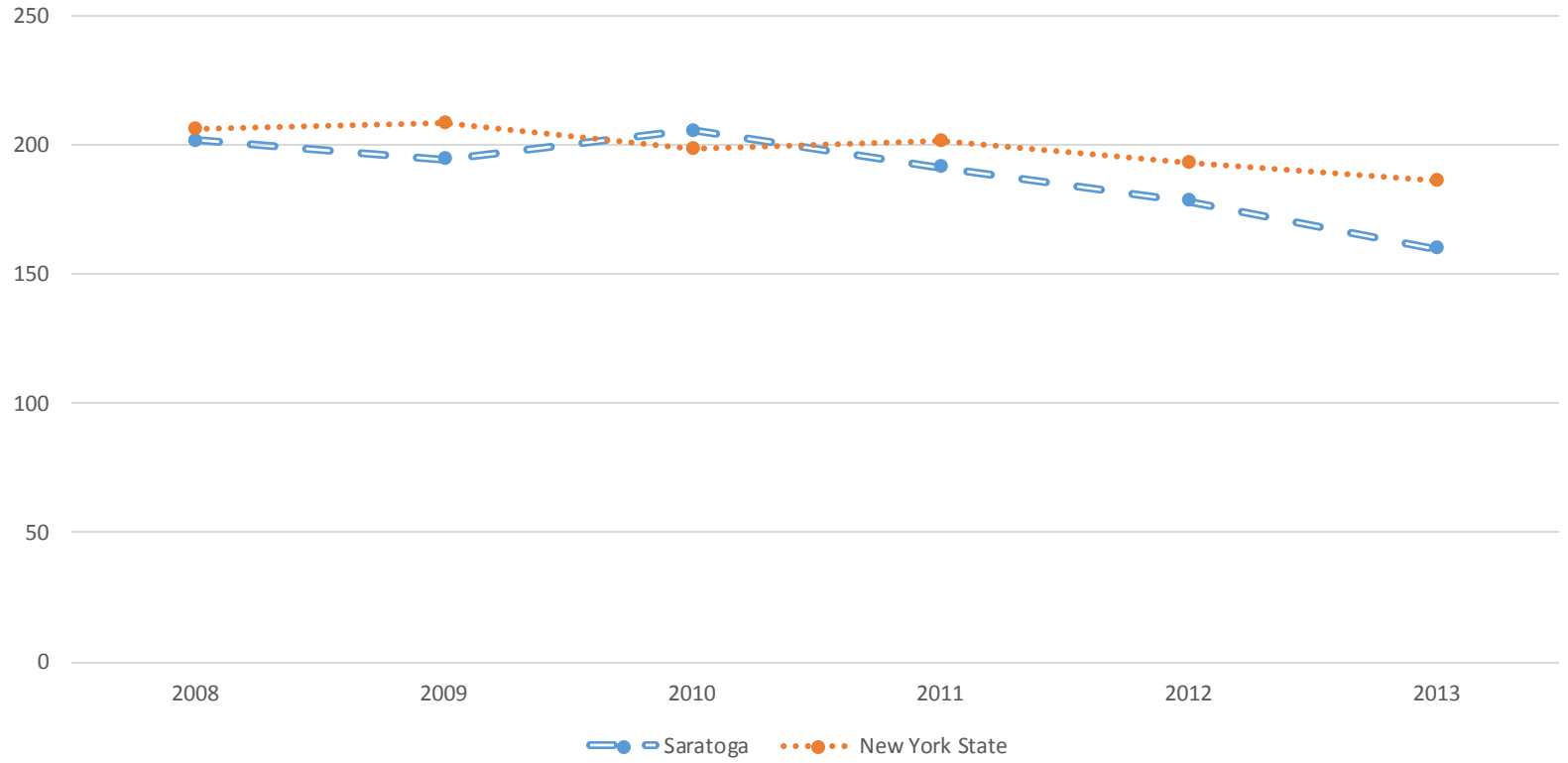
# Emergency Department Visits due to Falls, ages 1-4 per 10,000

Data Source: SPARCS data as of December 2014





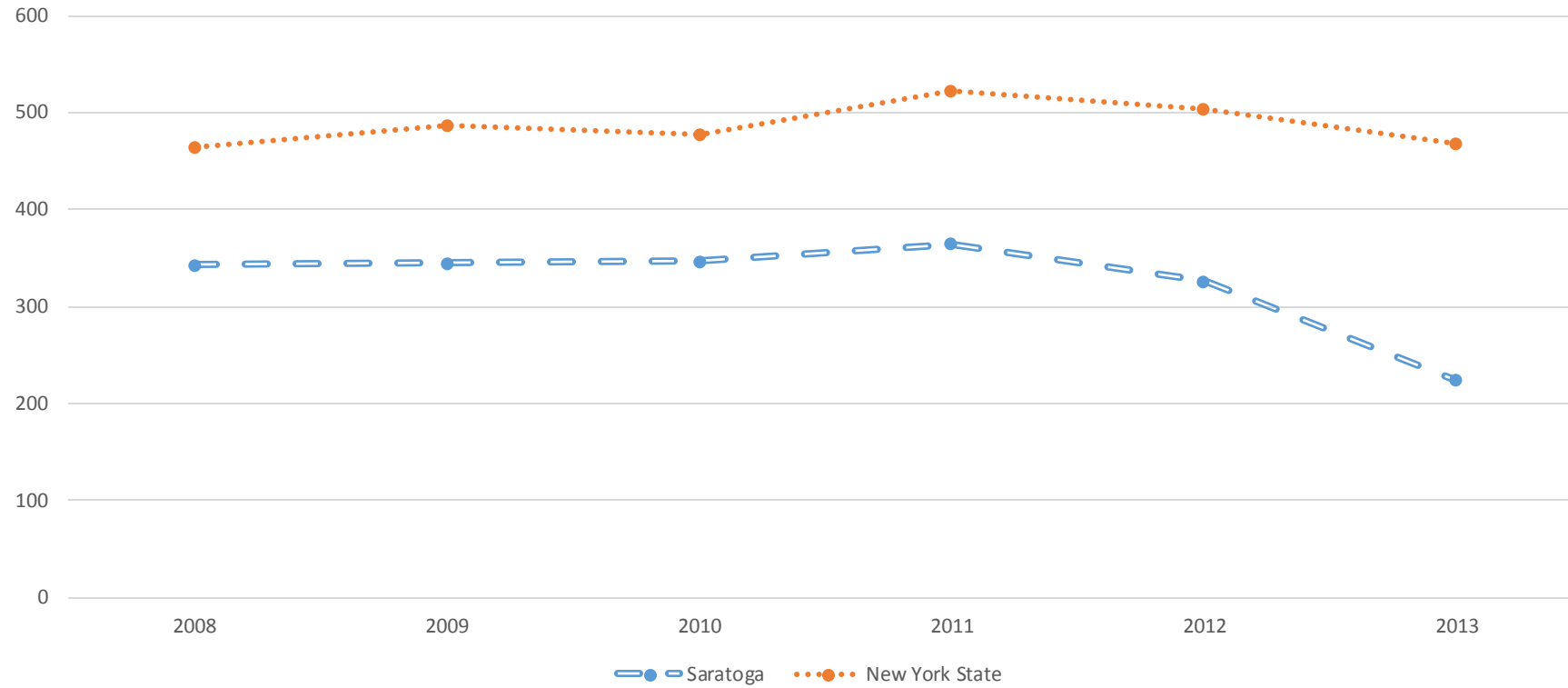
### Age-Adjusted Fall Hospitalization Rate ages 65 + per 10,000 population for New York State and Saratoga County, 2008-2013



	2008	2009	2010	2011	2012	2013
<b>Saratoga</b>	201.8	194.6	205.8	191.4	178.4	160.1
<b>New York State</b>	206.5	208.8	198.5	201.5	193.4	186



### Age-Adjusted ED Visit Rate ages 1-4 per 10,000 population for New York State and Saratoga County, 2008-2013



	2008	2009	2010	2011	2012	2013
<b>Saratoga</b>	342.8	344.9	346.4	364.5	326.1	223.8
<b>New York State</b>	464.7	487.3	478.2	521.4	504.1	467.2

# EQUITY

---



# Fall Hospitalizations per 10,000 by Age, 2011-2013



	Saratoga	Upstate
65-74 years	66.9	75.2
75-84 years	228.0	229.4
85 + years	537.4	590.7

## Fall Indicators ages 65+ per 10,000 by Gender, 2011-2013



### Age- Adjusted Hospitalizations

	<b>Saratoga</b>	<b>Capital Region</b>
Male	143.8	147.0
Female	206.7	210.3

### Age- Adjusted ED Visits

	<b>Saratoga</b>	<b>Capital Region</b>
Male	251.5	270.4
Female	387.7	397.1



# Fall Hospitalizations ages 65+ per 10,000 by Race/Ethnicity, 2011-2013



	Saratoga	Upstate
White non-Hispanic	97.3	194.4
Black non-Hispanic	78.5	105.2
Hispanic	S	291.2

**S: Data are suppressed. The data do not meet the criteria for confidentiality**

# Top Neighborhood Rates

Source: SPARCS data as of December 2014



## ED Visits (65+ years)

**Saratoga- 332.1**

**South Glens Falls- 515.7**

**Ballston Spa- 491.1**

**Saratoga Springs- 450.4**

**Upstate- 389.2**

## Hospitalizations (65+ years)

**Saratoga- 160.1**

**Ballston Spa- 242.6**

**Saratoga Springs- 226.5**

**North East- 207.7**

**Upstate- 193.8**

# Top Neighborhood Rates

Source: SPARCS data as of December 2014



## ED Visits (1-4 years)

**Saratoga-223.8**

**South Glens Falls- 646.8**

**Ballston Spa- 398.3**

**North West- 387.8**

**Upstate - 462.1**

# Falls Summary



**Annually, Saratoga county has:**

- **1,100 ED visits due to falls in the 65+ years population.**
- **547 Hospitalizations due to falls in the 65+ years population.**
- **211 ED visits due to falls in the 1-4 years population.**
- **4 Hospitalizations due to falls in the 1-4 years population.**

## Falls in the Elderly Summary

- **Saratoga county had lower rates for both ED visits and hospitalizations due to falls in the 65+ years population than ROS.**
- **Hospitalizations due to falls increased with age in the elderly population, with those 85+ being more likely to be hospitalized due to a fall.**
- **Fall hospitalizations in the 65+ population have been decreasing since 2010; ED visits for the 1-4 years population since 2011.**
- **The female population had 1.4- 1.5 times the rate of fall ED visits and hospitalization rates compared to their male counterparts in Saratoga county.**
- **White non-Hispanics were 1.2 times more likely to be hospitalized due a fall than Black non-Hispanics.**
- **Saratoga's high risk neighborhoods had 1.2-1.3 times the rate of ED visits due to falls in the 65+ years population compared to ROS.**
- **South Glens Falls was the only high risk neighborhood (1.4 times) with a fall-related ED visit rate in the 1-4 population higher than ROS.**





# OCCUPATIONAL HEALTH IN SARATOGA COUNTY

---

# Work-related Hospitalization per 100,000 employed persons, ages 16+ years and Significance for Saratoga County compared to NYS (excl. NYC)

Source: 2011-2013 SPARCS Data as of July, 2015



	Saratoga	Capital Region
Work-related hospitalization per 100,000 employed persons, ages 16+ years (2013)	148	664

	Saratoga		Upstate
Work-related hospitalization per 100,000 employed persons, ages 16+ years (2011-2013)	164.1	Lower	191.1

# Elevated blood lead levels per 100,000 employed persons, aged 16+ years and Significance for Saratoga County in comparison to NYS (excl. NYC)

Source: 2011-2013 NYS Department of Health Heavy Metals Registry Data as of July, 2015



	Saratoga	Capital Region
Elevated blood lead levels per 100,000 employed persons, aged 16+ years (2013)	27	79

	Saratoga	Similar	Upstate
Elevated blood lead levels per 100,000 employed persons, aged 16+ years (2013)	22.8	Similar	22.7



# Occupational Injuries treated in the ED per 10,000 adolescents, ages 15-19 years and Significance for Saratoga County in comparison to NYS (excl. NYC)

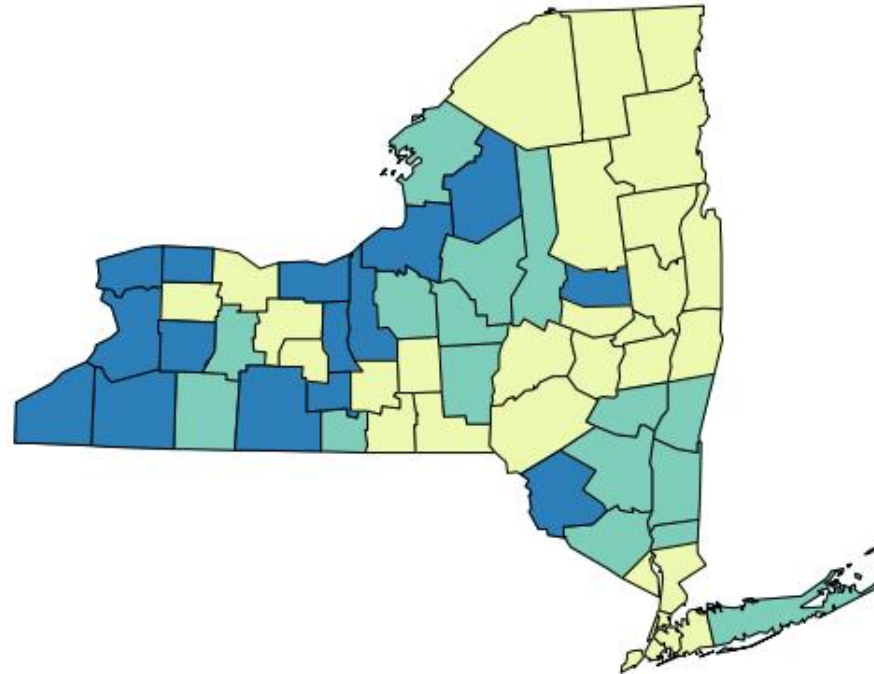
Source: SPARCS data as of December 2014



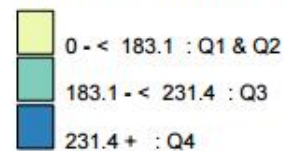
	Saratoga	Capital Region
Occupational Injuries treated in the ED per 10,000 adolescents, ages 15-19 years (2013)	51	210

	Saratoga		Upstate
Occupational Injuries treated in the ED per 10,000 adolescents, ages 15-19 years (2013)	53.3	Higher	35.0

# Work-related hospitalization per 100,000 employed persons, ages 16+ years

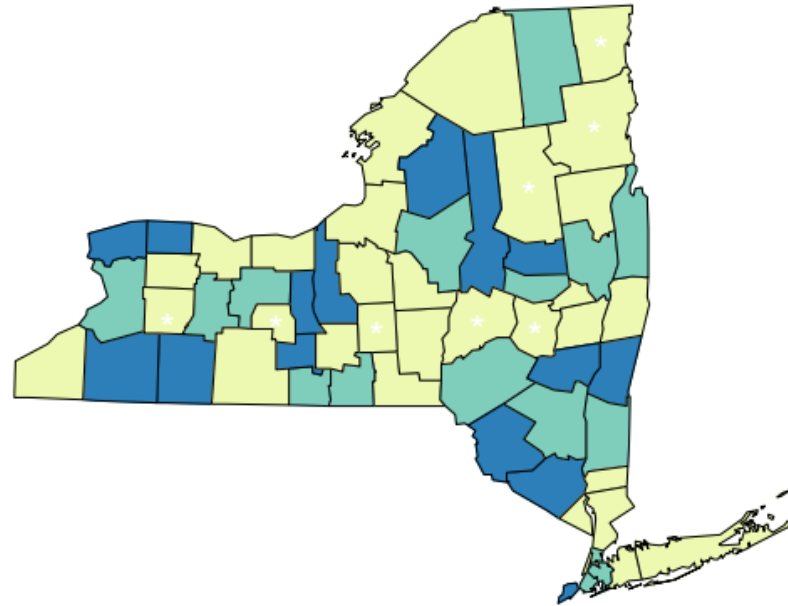


Hospitalization rate  
Counties Are Shaded Based On Quartile Distribution

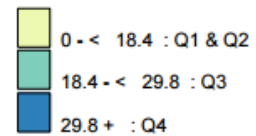


Source: 2011-2013 SPARCS Data as of July, 2015

# Elevated blood lead levels per 100,000 employed persons, aged 16+ years



Rate  
Counties Are Shaded Based On Quartile Distribution  
(\* Fewer than 10 events in the numerator, therefore the rate is unstable)

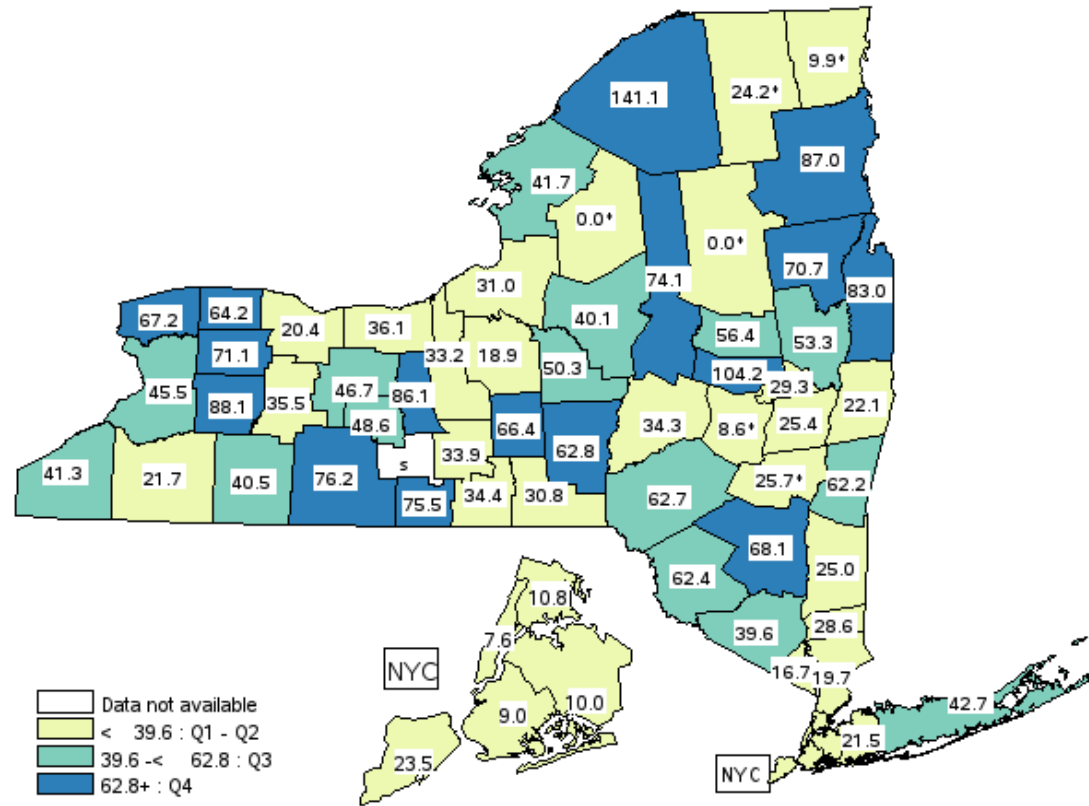


Source: 2011-2013 NYS Department of Health Heavy Metals Registry Data as of July, 2015

# Occupational Injuries treated in the ED per 10,000 adolescents, ages 15-19 years

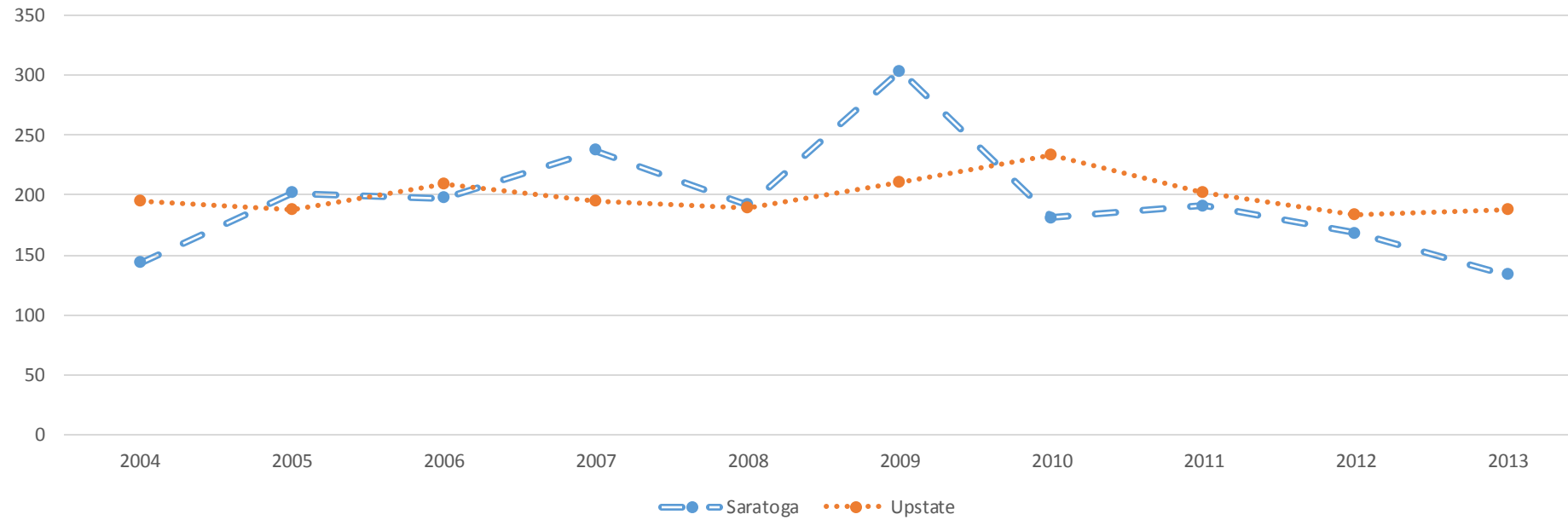


Data Source: SPARCS data as of December 2014



## Work-related Hospitalization per 100,000 employed persons, ages 16+ years, for New York State (excl. NYC) and Saratoga County

Source: 2011-2013 SPARCS Data as of July, 2015

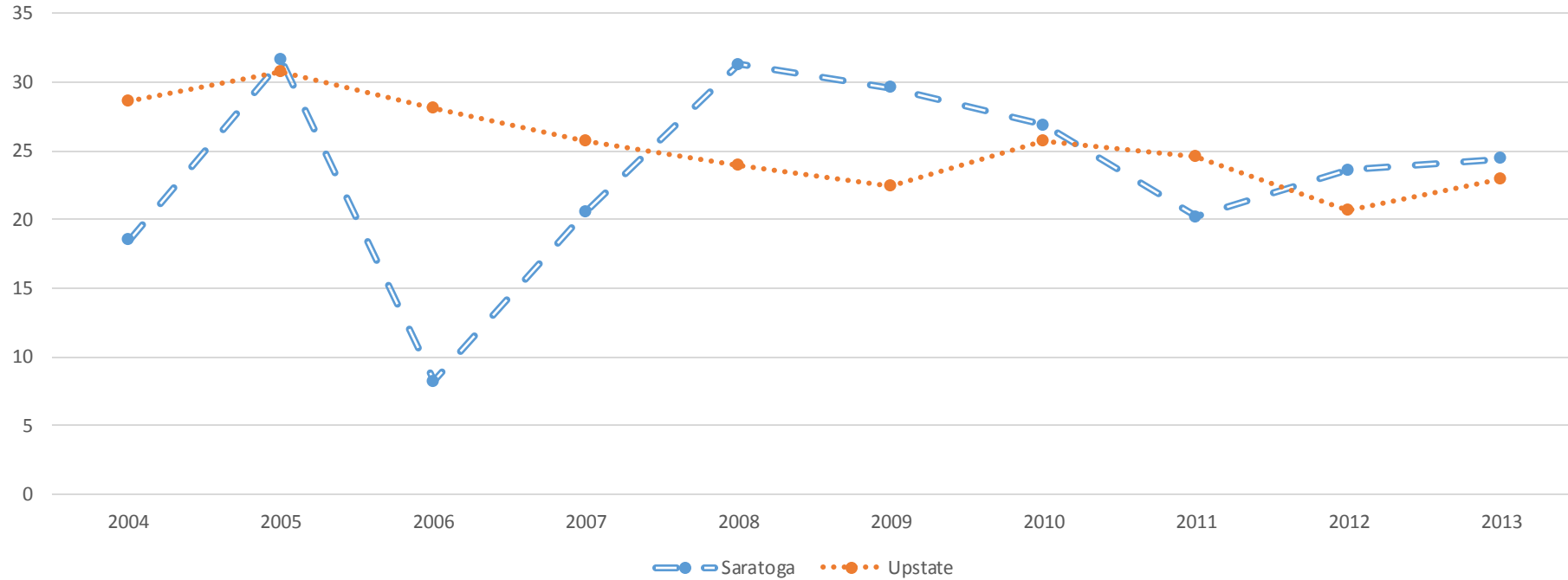


	2004	2005	2006	2007	2008	2009	2010	2011	2012	2013
<b>Saratoga</b>	143	201.6	197.5	237.6	191.8	303.2	181	191.3	168	133.5
<b>Upstate</b>	194.5	187.4	209.3	194.5	189.7	210.7	233.3	202.6	183.2	187.9



## Elevated blood lead levels per 100,000 employed persons, aged 16+ years, for New York State (excl. NYC), Saratoga County

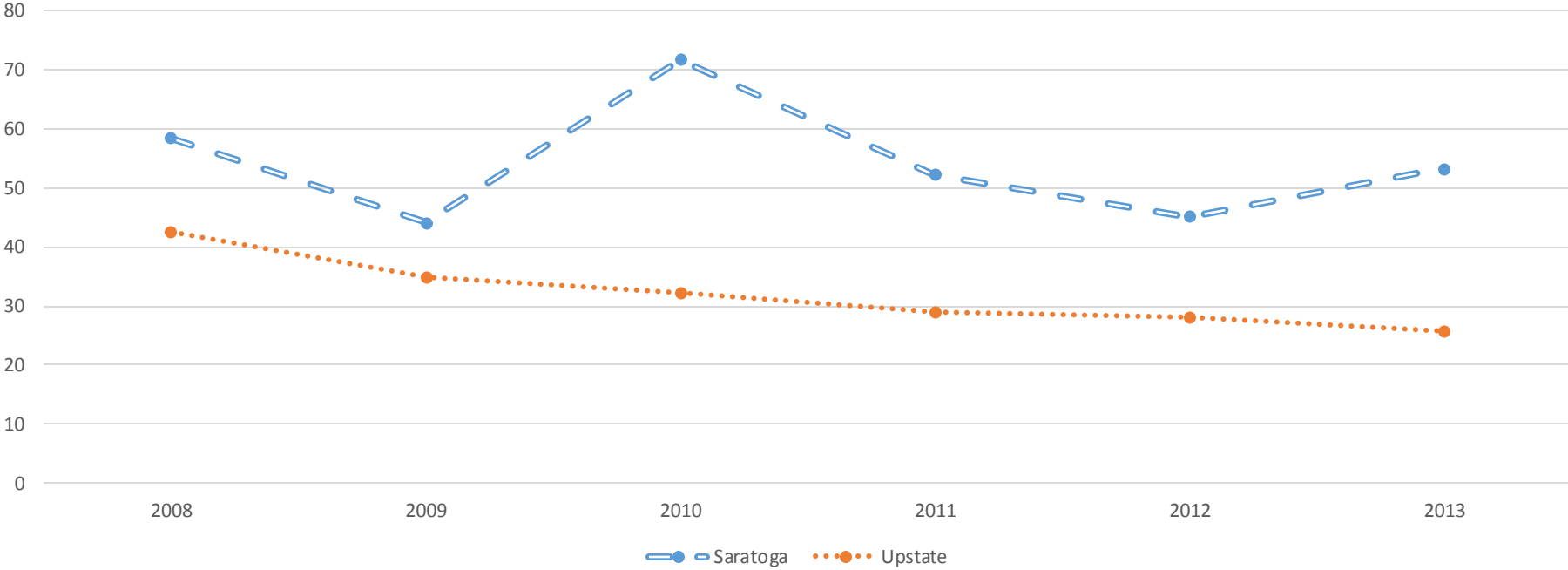
Source: 2011-2013 NYS Department of Health Heavy Metals Registry Data as of July, 2015



	2004	2005	2006	2007	2008	2009	2010	2011	2012	2013
<b>Saratoga</b>	18.5	31.6	8.2	20.6	31.3	29.6	26.9	20.2	23.6	24.4
<b>Upstate</b>	28.6	30.8	28.1	25.7	24	22.4	25.7	24.6	20.7	22.9

# Occupational Injuries treated in the ED per 10,000 adolescents, ages 15-19 years, for New York State (excl. NYC) and Saratoga County

Source: SPARCS data as of December 2014



	2008	2009	2010	2011	2012	2013
<b>Saratoga</b>	58.4	44.2	71.7	52.2	45.1	53.3
<b>New York State</b>	42.7	34.9	32.2	28.9	28.1	25.7

# Occupational Health Summary



- **Work-related hospitalizations in employed persons 16 years and older were lower in Saratoga County than ROS.**
- **Elevated blood lead levels were similar to ROS.**
- **Occupational injuries treated in the ED in employed persons aged 15-19 years were higher in Saratoga county when compared to ROS.**
- **Work-related hospitalizations have been decreasing since 2009.**
- **Elevated blood lead levels have been decreasing from 2007 to 2011, but increasing through 2013.**
- **Occupational injuries treated in the ED in employed persons aged 15-19 years were decreasing, but had an increase from 2012-2013.**