



PROMOTE A HEALTHY AND SAFE ENVIRONMENT



CRIME IN COLUMBIA AND GREENE COUNTIES

Crime Indicators for Columbia and Greene Counties Compared to New York State (excl. NYC), 2014



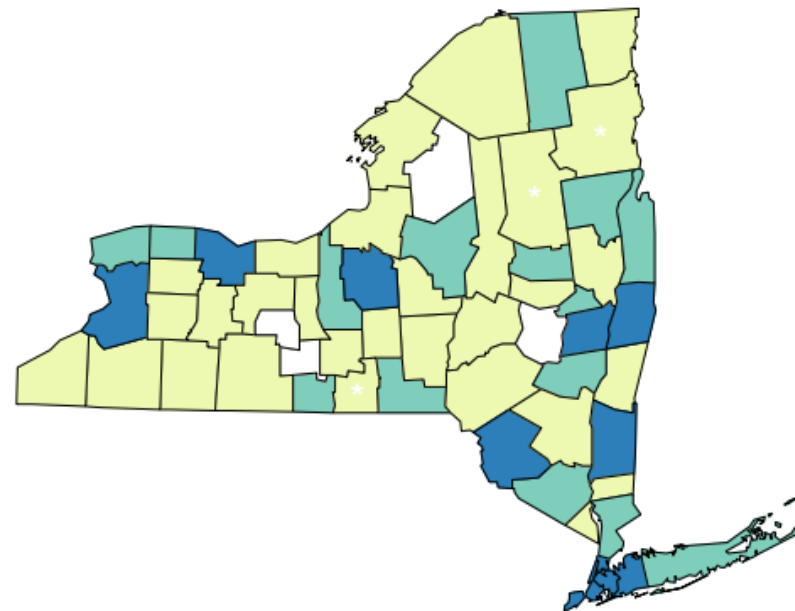
	Columbia	Greene	Capital Region
Number of Assault ED visits per year (2013)	237	140	3,544
Number of Assault Hospitalizations per year (2013)	6	11	210
Number of firearm-related crimes known to the police per year	4	8	365
Number of violent index crimes known to the police per year	80	99	2,561
Number of property index crimes known to the police per year	877	608	20,743
Young Adult Arrests-Drug Use/Possession/Sale/10,000	38	33	623

Crime Indicators and Significance for Columbia and Greene Counties Compared to New York State (excl. NYC), 2014



	Columbia		Greene		Upstate
Age-Adjusted Assault ED visits/10,000	47.6	Higher	31.4	Lower	37.1
Age-Adjusted Assault Hospitalizations/10,000	1.2	Significantly Lower	2.3	Lower	2.8
Firearm-related crime/10,000	0.6	Lower	1.7	Lower	4.1
Violent crime/10,000	12.9	Lower	20.5	Lower	22.3
Property crime/10,000	141.1	Lower	125.7	Lower	178.5
Young Adult Arrests-Drug Use/Possession/Sale/10,000	91.4	Higher	83.3	Higher	69.7

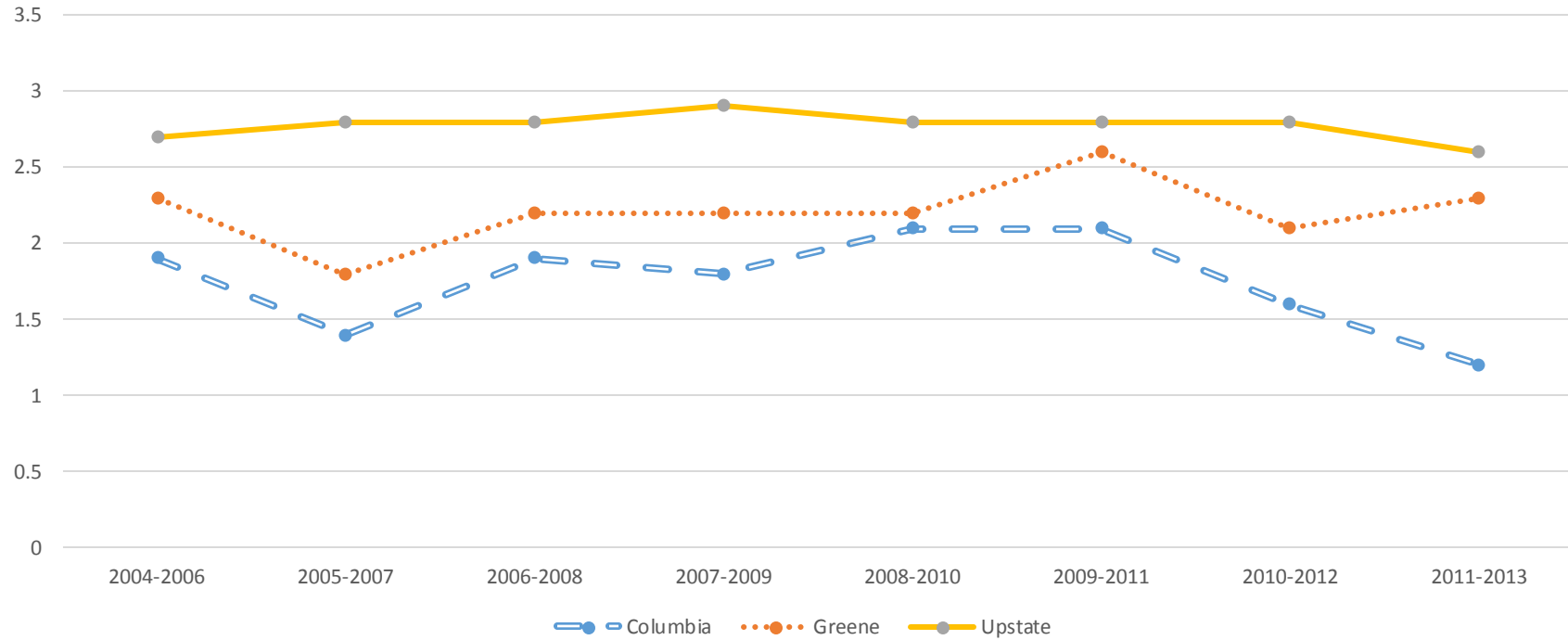
Age-Adjusted Assault Hospitalizations per 10,000 population



Hospital Discharge Rate
Counties Are Shaded Based On Quartile Distribution
(* Fewer than 10 events in the numerator, therefore the rate is unstable)



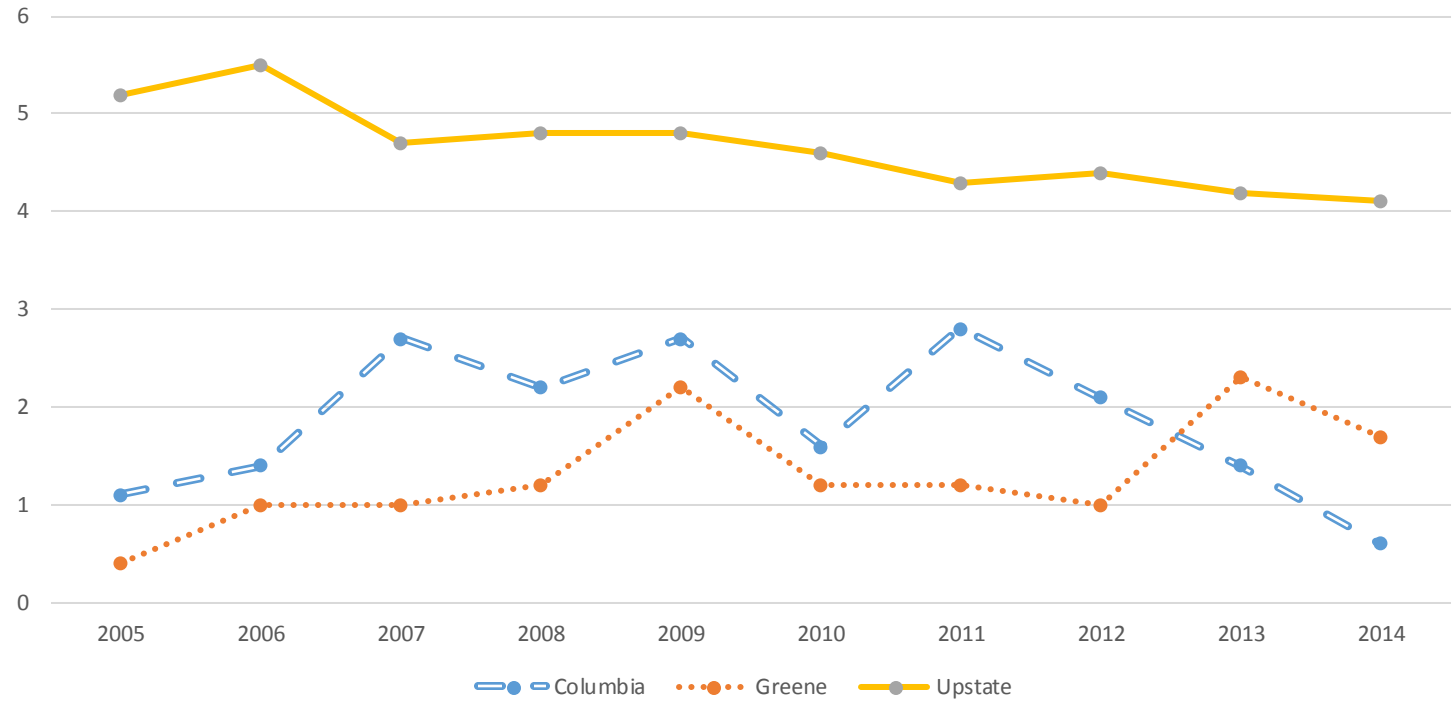
Age-Adjusted Assault Hospitalization Rate per 10,000 population for New York State (excl. NYC), Columbia County and Greene County, 2004-2013 (3-years averages)



	2004-2006	2005-2007	2006-2008	2007-2009	2008-2010	2009-2011	2010-2012	2011-2013
Columbia	1.9	1.4	1.9	1.8	2.1	2.1	1.6	1.2
Greene	2.3	1.8	2.2	2.2	2.2	2.6	2.1	2.3
Upstate	2.7	2.8	2.8	2.9	2.8	2.8	2.8	2.6



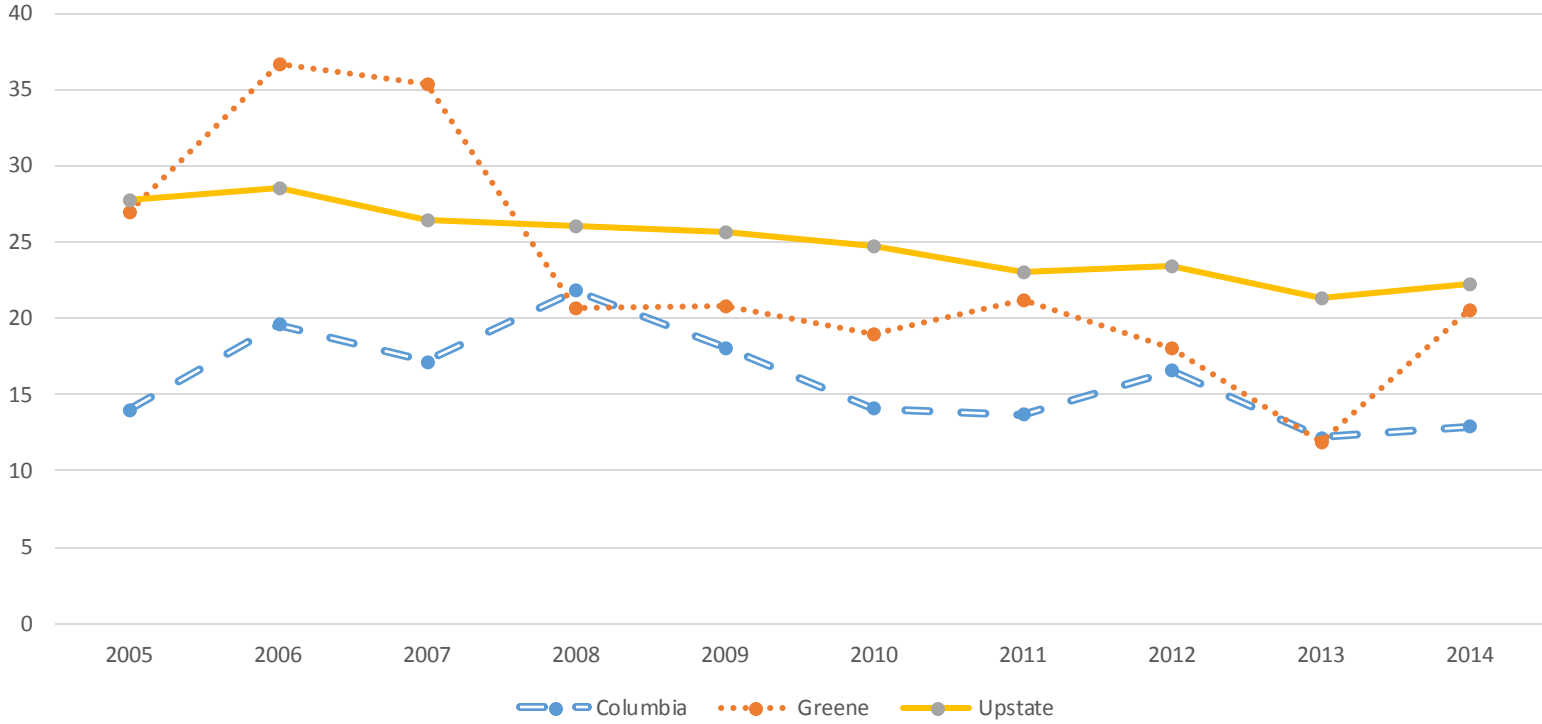
Firearm-Related Index Crime Rate Per 10,000 population for New York State (excl. NYC) Columbia County and Greene County, 2005-2014



	2005	2006	2007	2008	2009	2010	2011	2012	2013	2014
Columbia	1.1	1.4	2.7	2.2	2.7	1.6	2.8	2.1	1.4	0.6
Greene	0.4	1	1	1.2	2.2	1.2	1.2	1	2.3	1.7
Upstate	5.2	5.5	4.7	4.8	4.8	4.6	4.3	4.4	4.2	4.1

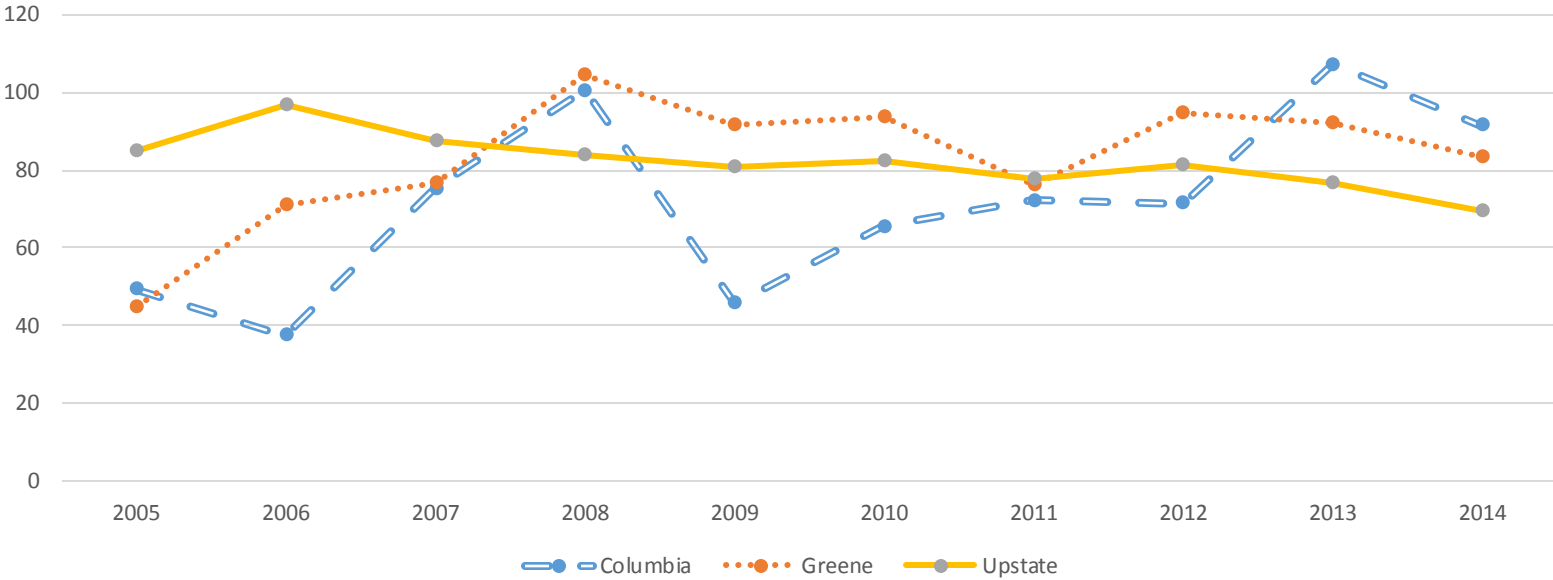


**Violent Crime Rate per 10,000 population for New York State (excl. NYC),
Columbia County and Greene County, 2005-2014**



	2005	2006	2007	2008	2009	2010	2011	2012	2013	2014
Columbia	14	19.6	17.2	21.8	18.1	14.1	13.7	16.6	12.2	12.9
Greene	27	36.7	35.3	20.7	20.8	19	21.2	18.1	11.9	20.5
Upstate	27.7	28.5	26.4	26	25.6	24.7	23.1	23.4	21.3	22.3

Young Adult Arrests-Drug Use/Possession/Sale per 10,000 population for New York State (excl. NYC), Columbia County and Greene County, 2005-2014



	2005	2006	2007	2008	2009	2010	2011	2012	2013	2014
Columbia	49.2	37.4	75.4	100.5	45.7	65.6	72.3	71.3	107.2	91.4
Greene	44.9	71	76.7	104.7	91.6	93.6	76	94.7	91.9	83.3
Upstate	85	96.8	87.4	83.7	81	82.3	77.9	81.5	76.9	69.7



EQUITY



Assault Indicators by Gender, 2011-2013

<u>Hospitalizations</u>	Columbia	Greene	Capital Region
Male	1.7	3.1	3.7
Female	0.6	1.7	1.1

<u>ED Visits</u>	Columbia	Greene	Capital Region
Male	57.2	37.2	46.5
Female	35.0	28.7	37.6



Top Neighborhood Rates

Assault ED Visits

Columbia – 47.6

Hudson- 90.3

Ichabod- 37.0

Chatham- 26.1

Greene-31.4

Windham/Ashland/Jewett- 42.0

Catskill- 39.5

Cairo/Durham- 35.0

Upstate- 37.1

Assault Hospitalizations

Columbia- 1.2

Hudson- 2.3

Ichabod- 1.2

Chatham- 0.5

Greene-2.3

Coxackie/Athens- 3.9

Cairo/Durham- 2.7

Catskill- 2.1

Upstate- 2.8

Crime Summary



Annually, Columbia and Greene counties have:

- **377 Assault ED Visits**
- **17 Assault Hospitalizations**
- **12 Firearm-related Crimes**
- **179 Violent Crimes**
- **1,485 Property Crimes**
- **71 Young Adult Arrests for Drug Possession/Sale/Use**

Crime Summary

- **Columbia county had higher rates of assault ED visits in comparison to ROS, while Greene county had lower rates. Both Columbia and Greene counties had lower rates of assault hospitalizations than ROS, but Greene county still fell within the 3rd risk quartile.**
- **Both Columbia and Greene counties were lower than ROS for rates of firearm-related crimes, violent crimes and property crimes.**
- **Young Adult arrests for drug possession/sale/use were higher for both Columbia and Greene in comparison to ROS.**
- **Assault hospitalization rates have presented a fairly static trend over the last 10 years for Greene county, while Columbia county has shown a decrease since 2009-2011.**
- **With the exception of Young Adult arrests for drug possession/sale/use, Crime indicators have been on a decreasing trend for both counties in comparison to ROS.**
- **Of the high risk neighborhoods for both counties, only Hudson (2.4 times) for assault ED visits and Cocksackie/Athens (1.4 times) had higher rates for assault hospitalizations than ROS.**





FALLS IN COLUMBIA AND GREENE COUNTIES



The Effect of Falls on the Population, ages 65+ years, 2013

	Columbia	Greene	Capital Region
Number of ED Visits per year	454	266	5,300
Number of Hospitalizations per year	188	154	2,785

The Effect of Falls on the Population, ages 1-4 years, 2013

	Columbia	Greene	Capital Region
Number of ED Visits per year	109	50	1,771
Number of Hospitalizations per year	2	1	23

Fall Indicators and Significance for Columbia and Greene Counties Compared to NYS (excl. NYC)

Source: SPARCS data as of December 2014



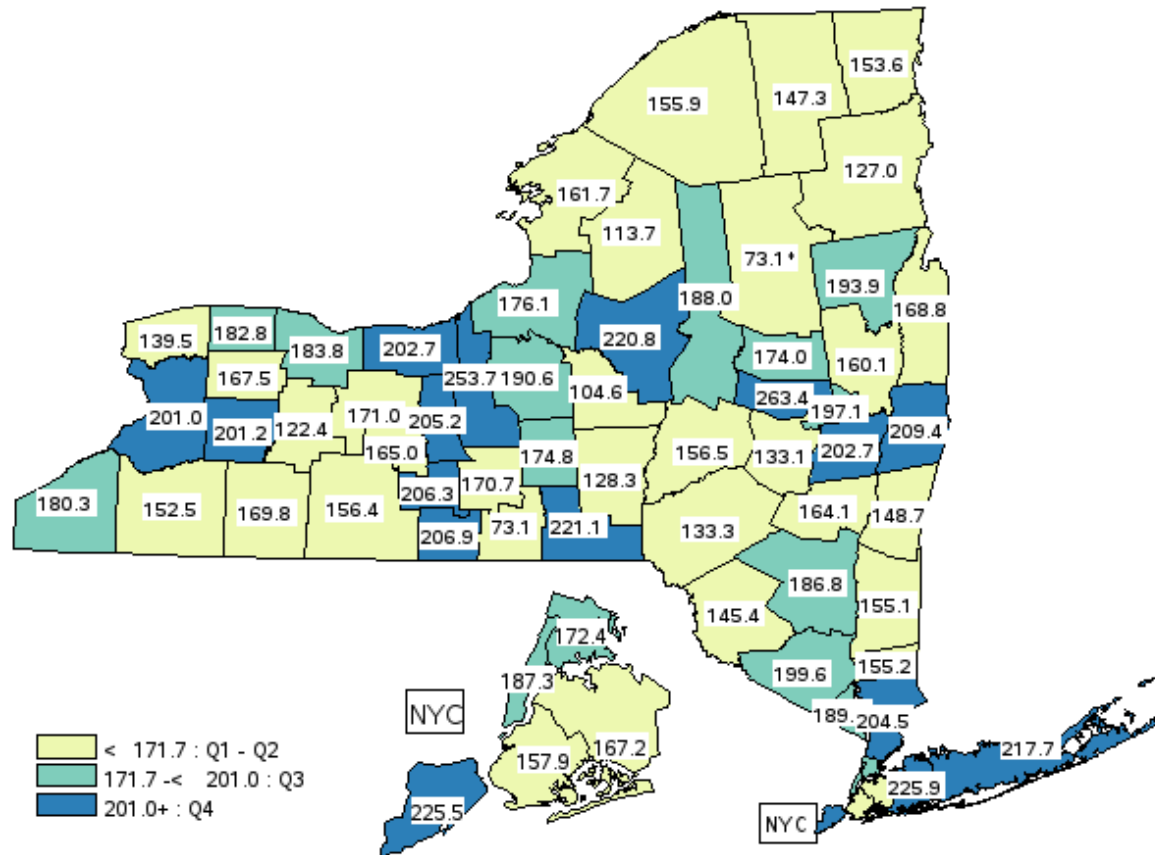
	Columbia		Greene		Upstate
Fall ED Visits, ages 65+ per 10,000 (2013)	365.6	Lower	280.4	Lower	389.2
Fall Hospitalizations ages 65+ per 10,000 (2013)	148.7	Lower	164.1	Lower	193.8

	Columbia		Greene		Upstate
Fall ED Visits, ages 1-4 per 10,000 (2013)	496.1	Higher	282.3	Lower	462.1
Fall Hospitalizations ages 1-4 per 10,000 (2011-2013)	11.8	Higher	5.6	Lower	8.5

Fall Hospitalizations, ages 65+ per 10,000

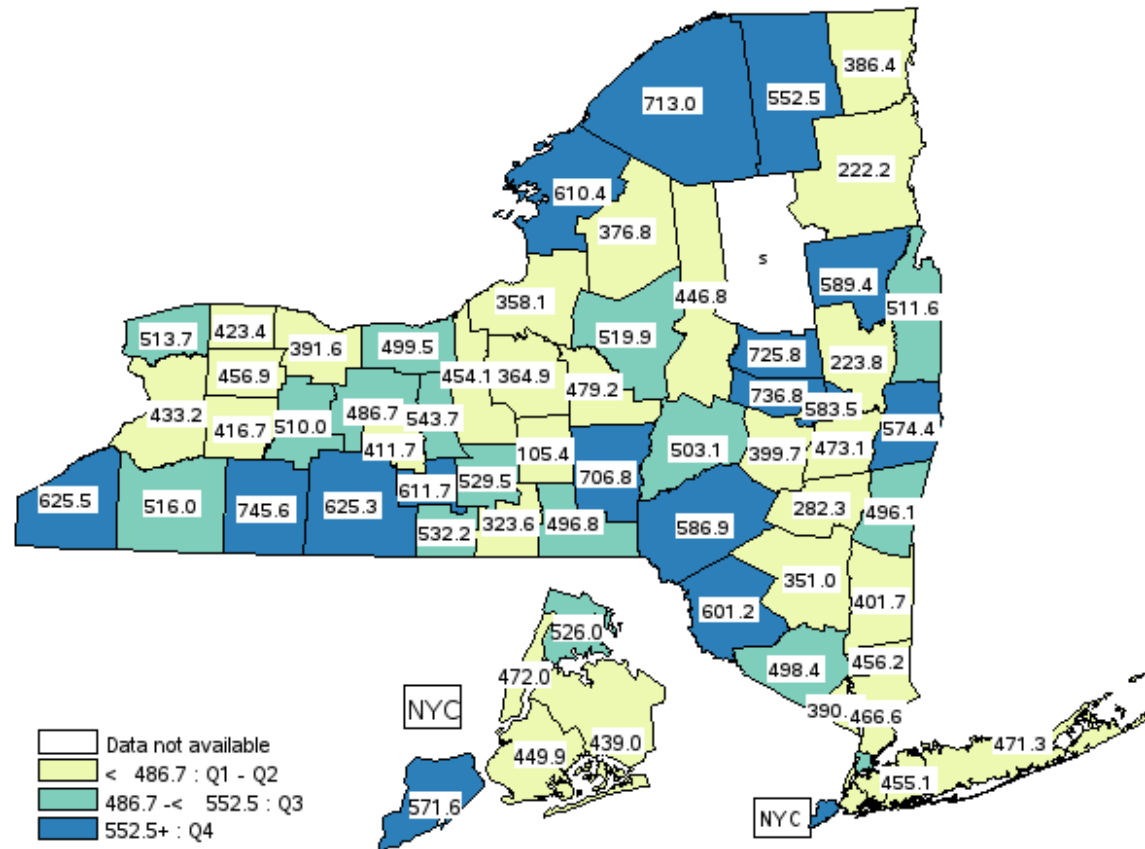


Data Source: SPARCS data as of December 2014



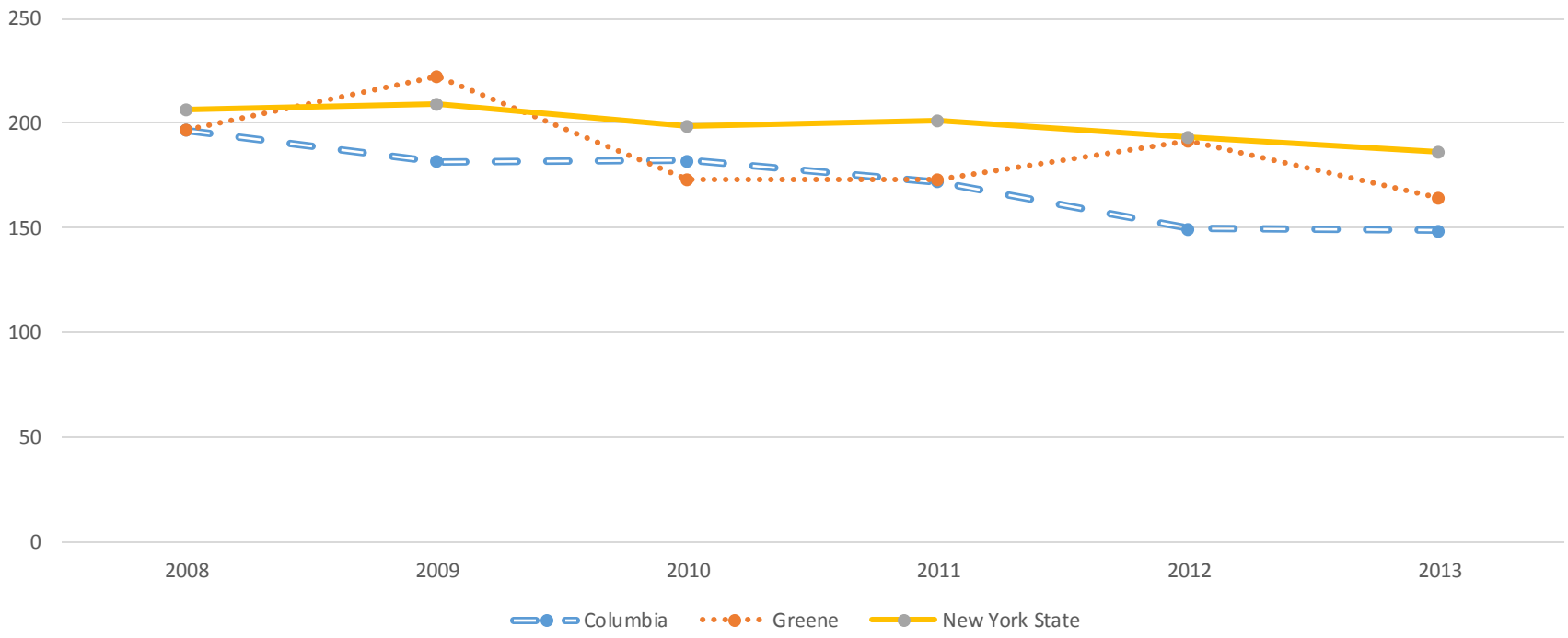
Emergency Department Visits due to Falls, ages 1-4 per 10,000

Data Source: SPARCS data as of December 2014



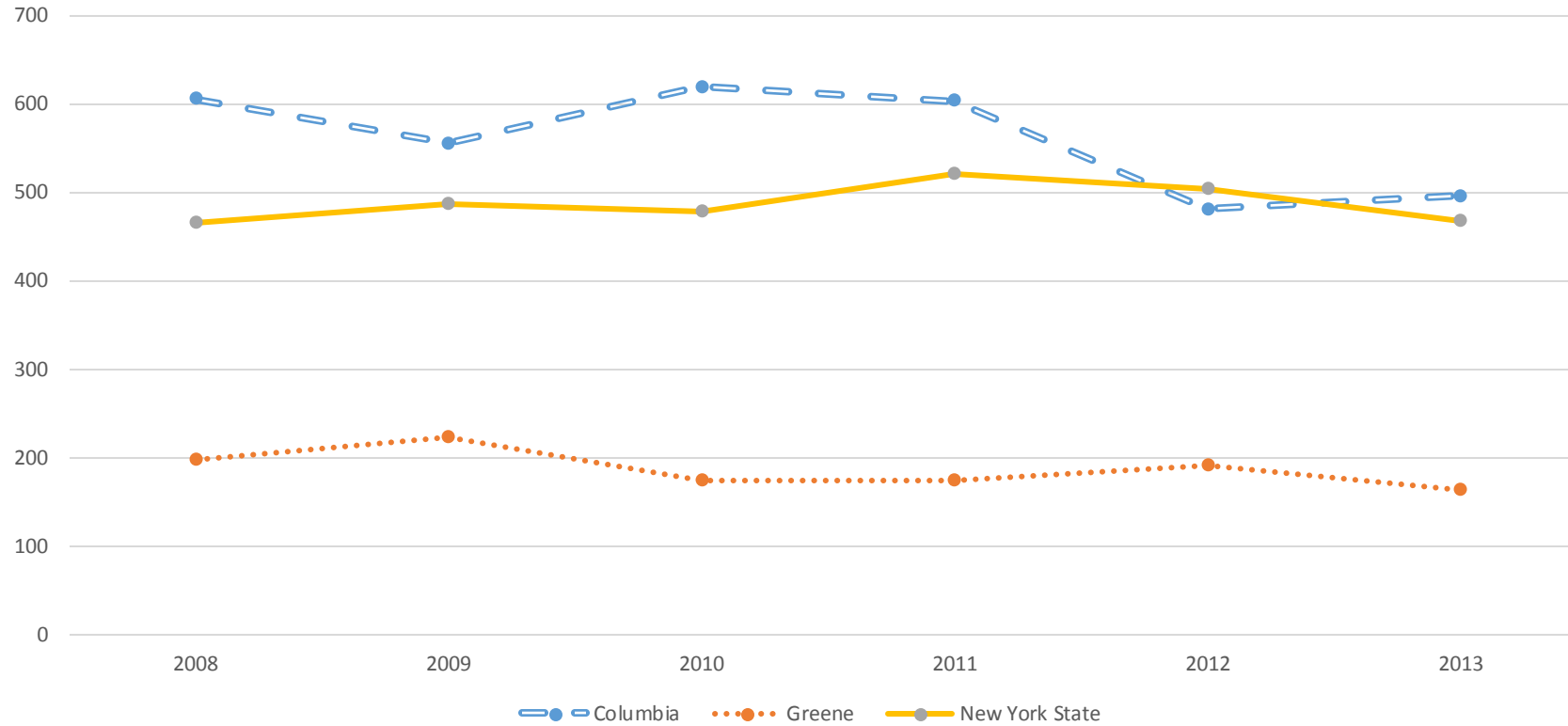


Age-Adjusted Fall Hospitalization Rate ages 65 + per 10,000 population for New York State, Columbia and Greene Counties, 2008-2013



	2008	2009	2010	2011	2012	2013
Columbia	196.6	181.7	182.1	171.9	149.8	148.7
Greene	197	222.2	173.2	173.3	191.7	164.1
New York State	206.5	208.8	198.5	201.5	193.4	186

**Age-Adjusted ED Visit Rate ages 1-4 per 10,000 population for New York State,
Columbia and Greene Counties, 2008-2013**



	2008	2009	2010	2011	2012	2013
Columbia	605.5	554.8	618.7	603.7	480.6	496.1
Greene	197	222.2	173.2	173.3	191.7	164.1
New York State	464.7	487.3	478.2	521.4	504.1	467.2

EQUITY



Fall Hospitalizations per 10,000 by Age, 2011-2013



	Columbia	Greene	Upstate
65-74 years	66.0	74.5	75.4
75-84 years	172.4	213.5	229.4
85 + years	506.4	575.6	591.0



Fall Indicators ages 65+ per 10,000 by Gender, 2011-2013

Hospitalizations

	Columbia	Greene	Capital Region
Male	120.3	131.9	147.0
Female	189.9	227.5	210.3

ED Visits

	Columbia	Greene	Capital Region
Male	282.8	198.2	270.4
Female	433.8	346.1	397.1

Fall Hospitalizations ages 65+ per 10,000 by Race/Ethnicity, 2011-2013



	Columbia	Greene	Upstate
White non-Hispanic	154.6	173.7	194.4
Black non-Hispanic	125.8	S	105.2
Hispanic	S	S	291.2

S: Data are suppressed. The data do not meet the criteria for confidentiality

Top Neighborhood Rates

Source: SPARCS data as of December 2014



ED Visits (65+ years)

Columbia – 365.6

Pine Plains-1,082.6

Germantown- 490.4

Ichabod- 461.9

Greene- 280.4

Catskill- 389.6

Hunter/Tannersville- 288.6

Greenville-230.2

Upstate- 389.2

Hospitalizations (65+ years)

Columbia- 148.7

Ichabod-198.6

Hudson- 189.8

Chatham- 183.2

Greene-164.1

Catskill- 224.5

Coxackie/Athens- 202.2

Hunter/Tannersville-150.2

Upstate- 193.8

Top Neighborhood Rates

Source: SPARCS data as of December 2014

ED Visits (1-4 years)

Columbia – 496.1

Hudson-800.4

Germantown- 625.1

Chatham- 414.1

Greene - 282.3

Windham/Ashland/Jewett- 470.9

Cairo/Durham- 406.7

Catskill- 357.1

Upstate - 462.1



Falls Summary



Annually, Columbia and Greene counties have:

- **720 ED visits due to falls in the 65+ years population.**
- **342 Hospitalizations due to falls in the 65+ years population.**
- **159 ED visits due to falls in the 1-4 years population.**
- **3 Hospitalizations due to falls in the 1-4 years population.**

Falls in the Elderly Summary

- **Columbia and Greene counties both had lower rates for ED visits and hospitalizations due to falls in the 65+ years population than the ROS; Columbia had higher ED visits due to falls in the 1-4 year statistics than ROS.**
- **Hospitalizations due to falls increased with age in the elderly population, with those 85+ being more likely to be hospitalized due to a fall.**
- **Fall hospitalizations in the 65+ population have been decreasing for both counties since 2008.**
- **The female population had 1.5- 1.7 times the rate of fall ED visits and hospitalization rates compared to their male counterparts in both counties.**
- **High risk neighborhoods had 1.1-2.7 times the rate of ED visits due to falls in the 65+ years population in Columbia when compared to ROS. High risk neighborhoods in Greene county had the same or lower fall ED visit rate compared to ROS.**
- **High risk neighborhoods in both counties had fall hospitalization rates in the 65+ years population similar or lower than ROS.**
- **High risk neighborhoods in Greene county for fall ED visit rates in the 1-4 years population are similar or lower than ROS; For Columbia county, the ED visit rates in the 1-4 years population are 1.4 to 1.7 times higher than ROS.**





OCCUPATIONAL HEALTH IN COLUMBIA AND GREENE COUNTIES

Work-related Hospitalization per 100,000 employed persons, ages 16+ years and Significance for Columbia and Greene counties compared to NYS (excl. NYC)

Source: 2011-2013 SPARCS Data as of July, 2015



	Columbia	Greene	Capital Region
Work-related hospitalization per 100,000 employed persons, ages 16+ years (2013)	65	44	664

	Columbia		Greene		Upstate
Work-related hospitalization per 100,000 employed persons, ages 16+ years (2011-2013)	197.7	Higher	197.7	Higher	191.1

Elevated blood lead levels per 100,000 employed persons, aged 16+ years and Significance for Columbia and Greene counties in comparison to NYS (excl. NYC)

Source: 2011-2013 NYS Department of Health Heavy Metals Registry Data as of July, 2015



	Columbia	Greene	Capital Region
Elevated blood lead levels per 100,000 employed persons, aged 16+ years (2013)	13	8	79

	Columbia		Greene		Upstate
Elevated blood lead levels per 100,000 employed persons, aged 16+ years (2013)	55.5	Significantly Higher	38.6	Significantly Higher	22.9

Occupational Injuries treated in the ED per 10,000 adolescents, ages 15-19 years and Significance for Columbia and Greene counties in comparison to NYS (excl. NYC)

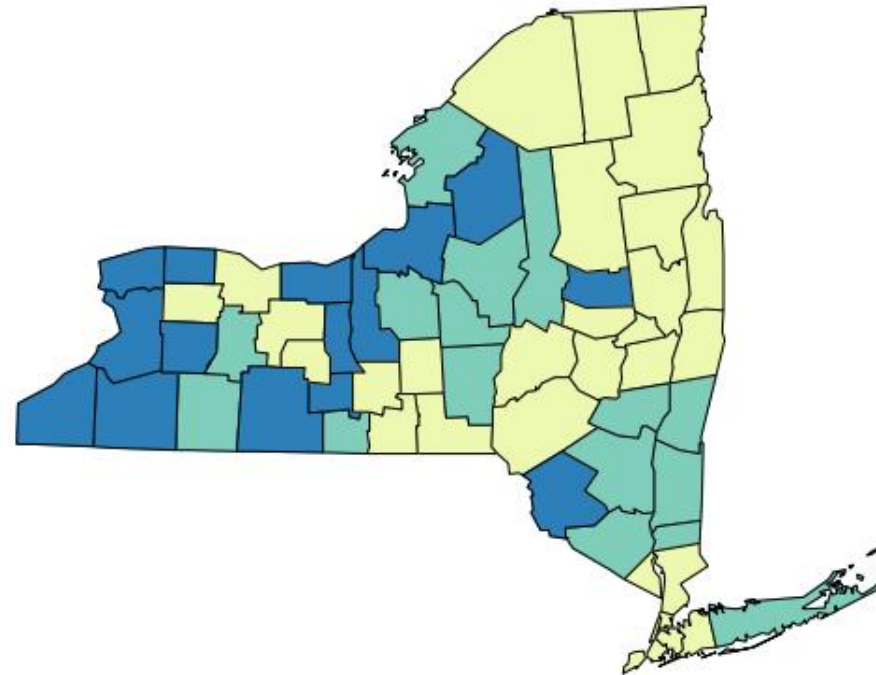
Source: SPARCS data as of December 2014



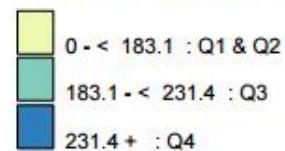
	Columbia	Greene	Capital Region
Occupational Injuries treated in the ED per 10,000 adolescents, ages 15-19 years (2013)	23	8	210

	Columbia		Greene		Upstate
Occupational Injuries treated in the ED per 10,000 adolescents, ages 15-19 years (2013)	62.2	Higher	25.7	Lower	35.0

Work-related hospitalization per 100,000 employed persons, ages 16+ years

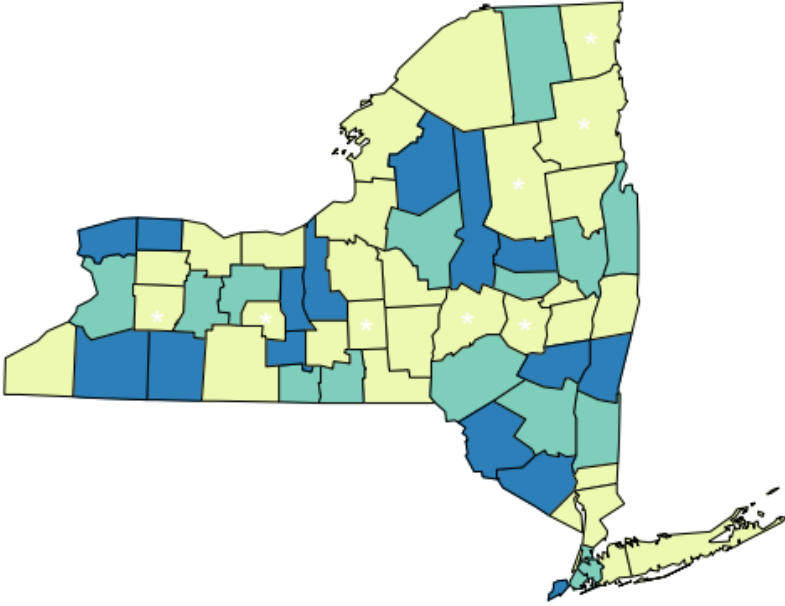


Hospitalization rate
Counties Are Shaded Based On Quartile Distribution



Source: 2011-2013 SPARCS Data as of July, 2015

Elevated blood lead levels per 100,000 employed persons, aged 16+ years



Rate
 Counties Are Shaded Based On Quartile Distribution
 (* Fewer than 10 events in the numerator, therefore the rate is unstable)

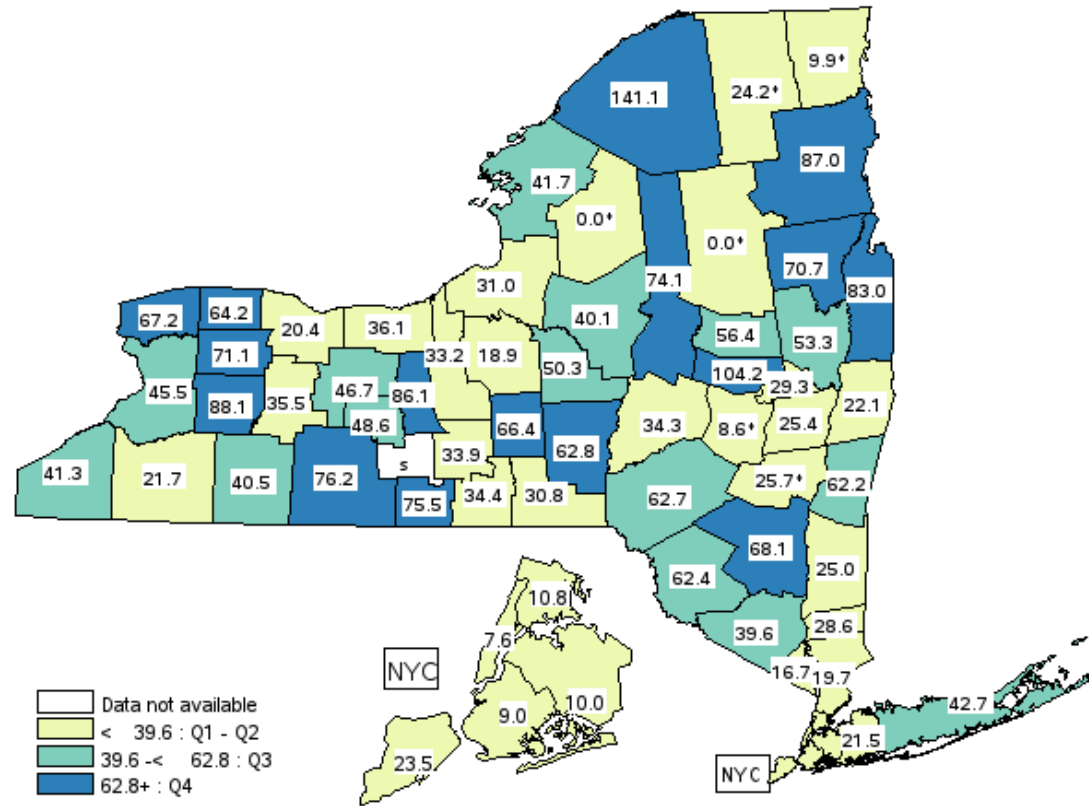
	0 - < 18.4 : Q1 & Q2
	18.4 - < 29.8 : Q3
	29.8 + : Q4

Source: 2011-2013 NYS Department of Health Heavy Metals Registry Data as of July, 2015

Occupational Injuries treated in the ED per 10,000 adolescents, ages 15-19 years

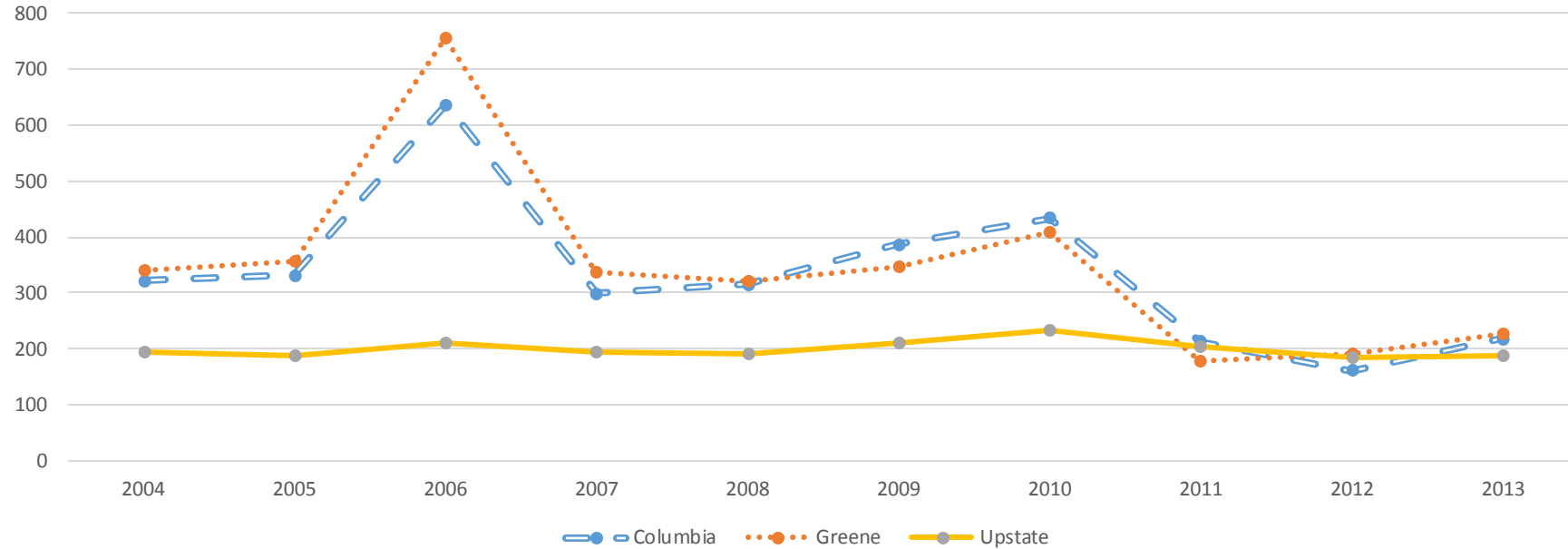


Data Source: SPARCS data as of December 2014



Work-related Hospitalization per 100,000 employed persons, ages 16+ years, for New York State (excl. NYC), Columbia and Greene counties

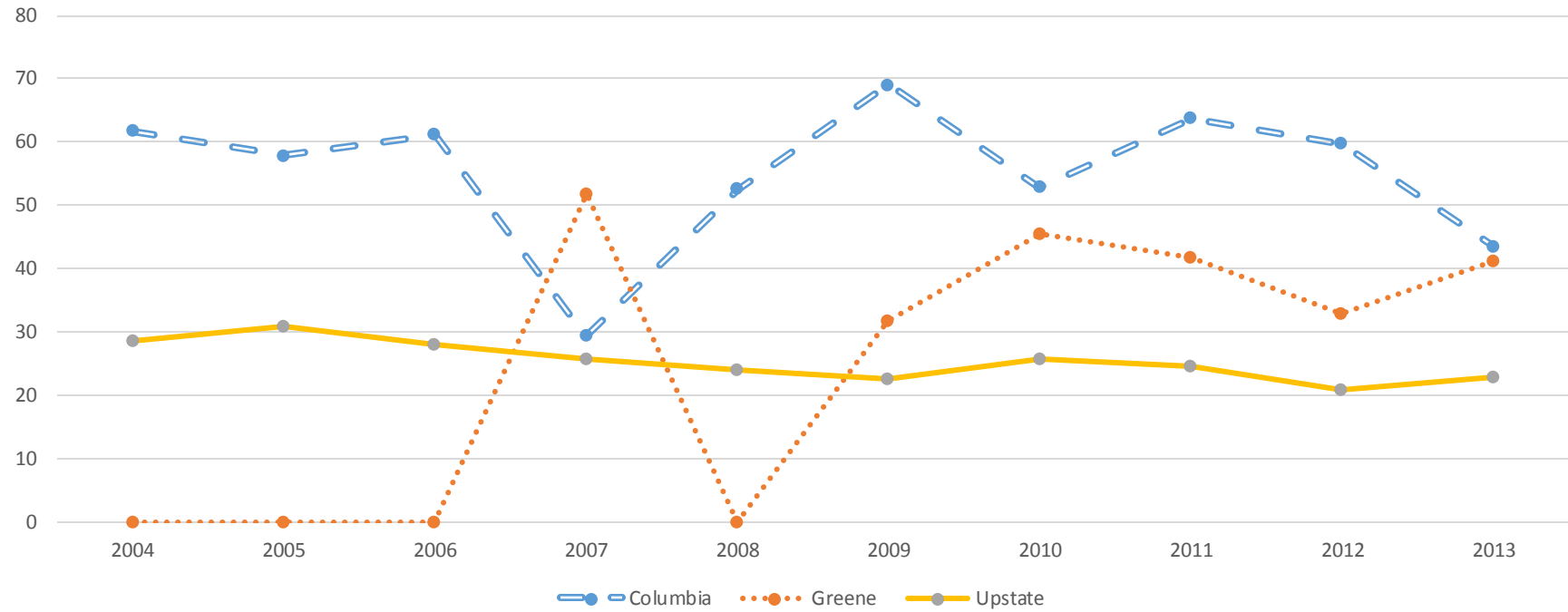
Source: 2011-2013 SPARCS Data as of July, 2015



	2004	2005	2006	2007	2008	2009	2010	2011	2012	2013
Columbia	321.4	331.2	636.7	299.7	315.8	386.2	433.1	212.8	161.6	218
Greene	341	355.3	756.5	337.7	321.7	345.5	409.1	176.7	192.4	226.7
Upstate	194.5	187.4	209.3	194.5	189.7	210.7	233.3	202.6	183.2	187.9

Elevated blood lead levels per 100,000 employed persons, aged 16+ years, for New York State (excl. NYC), Columbia and Greene counties

Source: 2011-2013 NYS Department of Health Heavy Metals Registry Data as of July, 2015

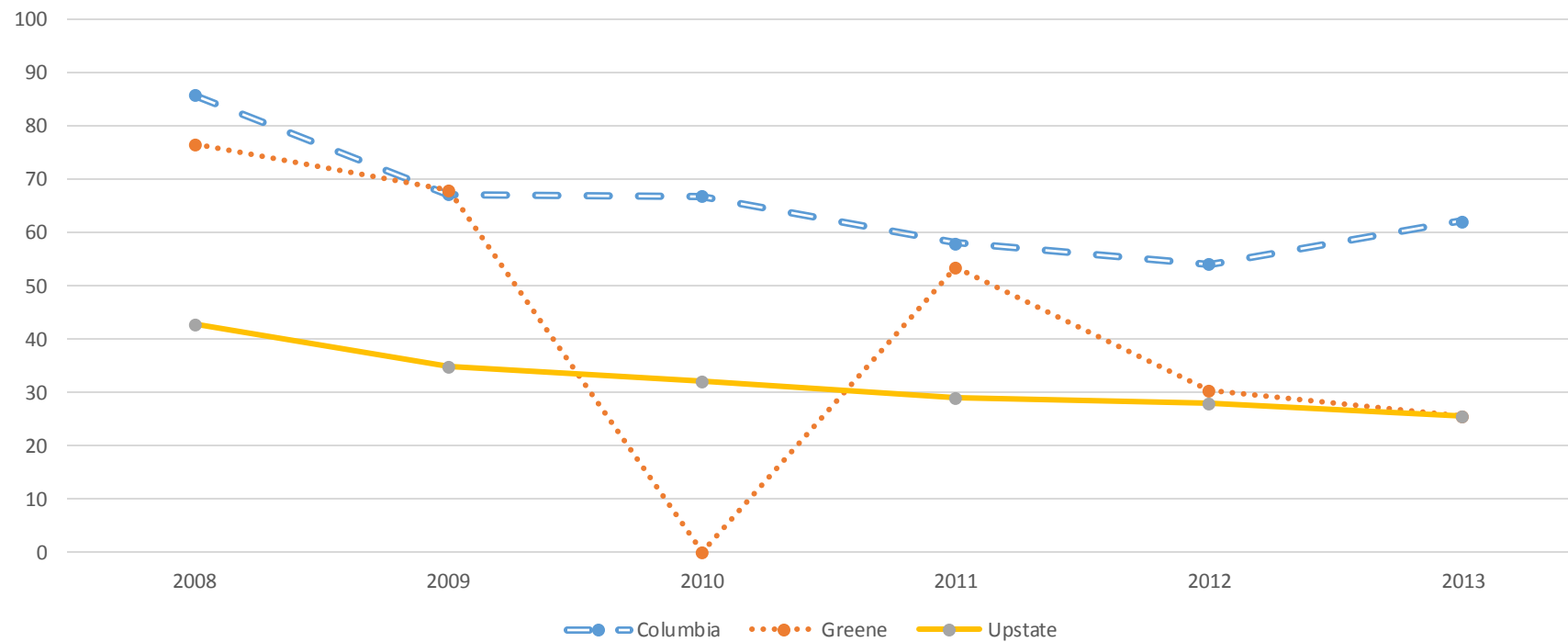


	2004	2005	2006	2007	2008	2009	2010	2011	2012	2013
Columbia	61.7	57.9	61.1	29.3	52.6	69	52.8	63.8	59.7	43.6
Greene	s	s	s	51.9	s	31.8	45.5	41.8	32.9	41.2
Upstate	28.6	30.8	28.1	25.7	24	22.4	25.7	24.6	20.7	22.9

s: Data do not meet reporting criteria

Occupational Injuries treated in the ED per 10,000 adolescents, ages 15-19 years, for New York State (excl. NYC), Columbia and Greene counties

Source: SPARCS data as of December 2014



	2008	2009	2010	2011	2012	2013
Columbia	86	67.2	66.9	58.2	54.2	62.2
Greene	76.6	67.9	s	53.7	30.5	25.7
Upstate	42.7	34.9	32.2	28.9	28.1	25.7

s: Data do not meet reporting criteria



Occupational Health Summary



- **Work-related hospitalizations in employed persons 16 years and older were higher in both Columbia and Greene counties when compared to ROS; Both counties fall into the 3rd risk quartile.**
- **Elevated blood lead levels in employed persons 16 years and older were higher in both Columbia and Greene counties when compared to ROS; Both counties fall into the 4th risk quartile.**
- **Occupational injuries treated in the ED for those aged 15-19 years were higher in Columbia county and lower in Greene county when compared to ROS; Columbia's rates fall into the 3rd risk quartile.**
- **Work-related hospitalizations have been decreasing since 2006.**
- **Elevated blood lead levels were unstable for Greene county, but have been slightly decreasing for Columbia county since 2011.**