

PROMOTE MENTAL HEALTH AND PREVENT SUBSTANCE ABUSE

MENTAL HEALTH IN COLUMBIA-GREENE

The Effect of Mental Health on the Population-NSDUH, Population 18+ Years of Age, 2013

	Columbia	Greene	Capital Region
Any Mental Illness	10,100	8,000	151,200
At Least One Major Depressive Episode	3,500	2,800	58,900
Serious Mental Illness	2,000	1,600	30,250
Serious Thoughts of Suicide	2,000	1,600	30,250

The Effect of Mental Health on the Population-NSDUH, Estimated Prevalence, Population 18+ Years of Age, 2013

	Columbia	Greene	Capital Region	New York State
Any Mental Illness	20%	20%	20%	19%
At Least One Major Depressive Episode	7%	7%	7%	6%
Serious Mental Illness	4%	4%	4%	4%
Serious Thoughts of Suicide	4%	4%	4%	4%

Finger Lakes HSA SPARCS and V.S. Portal Codes

Mental Diseases and Disorders-primary diagnosis (ICD 9)

- **Psychosis (290-299)**
- **Neurotic disorders, personality disorders, and other nonpsychotic mental disorders (300-316)**
- **Mental retardation (317-319)**

Excluding:

**291.0-291.9 - Alcohol induced mental disorders;
292.0-292.9 - Drug induced mental disorders;
303.0-303.9 - Alcohol dependence syndrome;
304.0-304.9 - Drug dependence syndrome.**

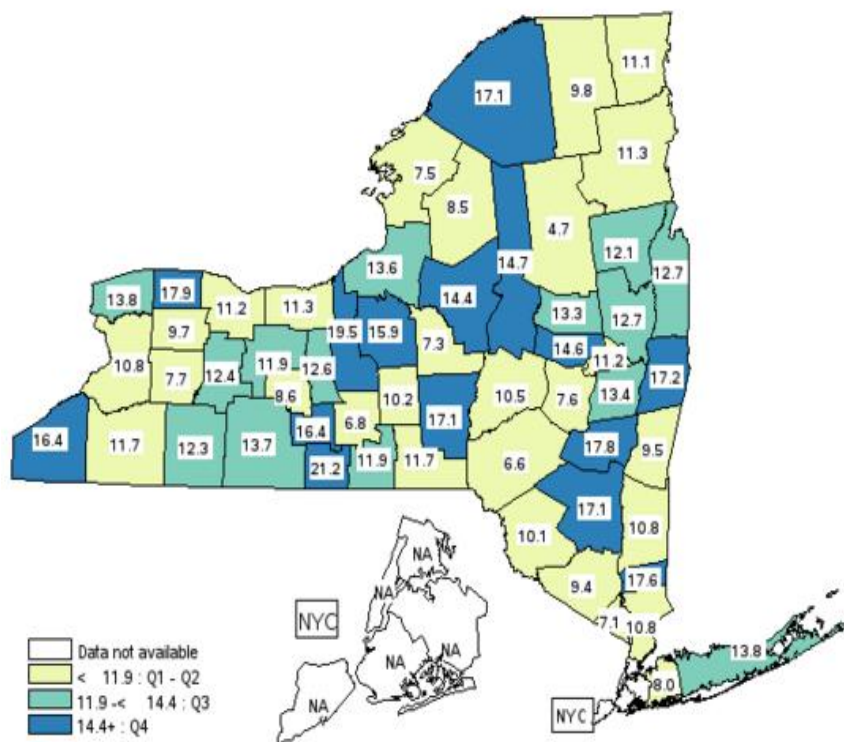
The Effect of Mental Health on the Population

	Columbia	Greene	Capital Region
Number of adults with poor mental health for 14+ days in last month (2013-14)	6,000	8,700	88,500
Number of mental disease and disorder ED visits per year (2013)	740	554	10,806
Number of mental disease and disorder hospitalizations per year (2013)	339	304	5,185
Number of self-inflicted injury ED visits (15+ yrs.) per year (2013)	54	46	728
Number of self-inflicted injury hospitalizations per year (2013)	37	35	818
Number of suicide deaths per year (2013)	9	7	108

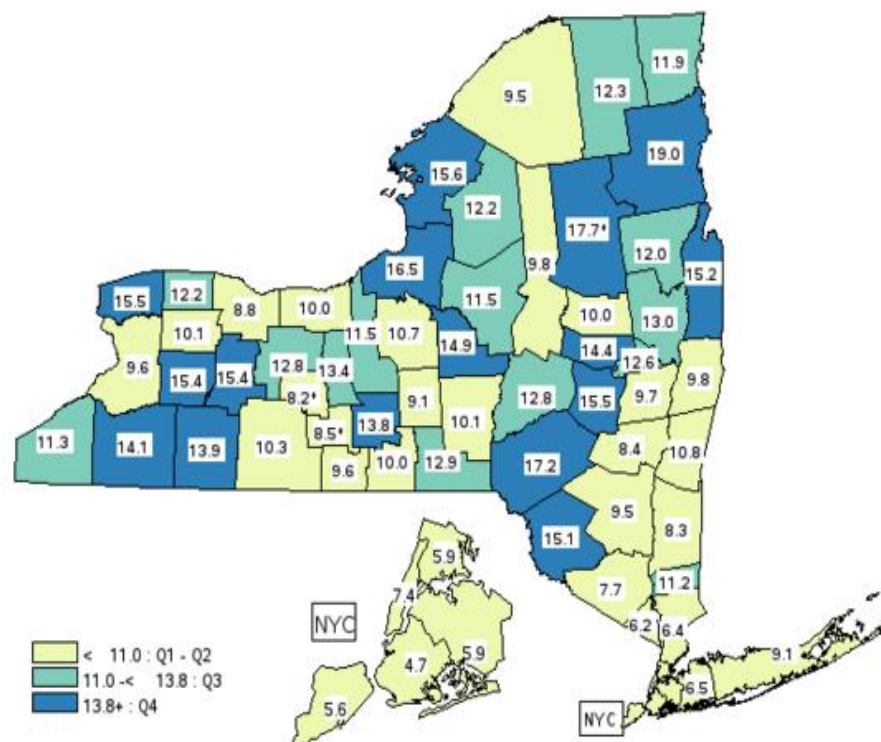
Mental Health Indicators and Significance Compared to New York State (excl. NYC)

	Columbia		Greene		Capital Region		Upstate
% adults with poor mental health for 14+ days in last month (2013-14)	9.5	Lower	17.8	Higher	13.5	Higher	11.8
Adjusted mental disease and disorder ED Visits/10,000 (2011-2013)	130.0	Higher	123.4	Lower	123.9	Lower	127.7
Adjusted mental disease and disorder hospitalizations/10,000 (2011-2013)	54.2	Lower	58.9	Higher	53.7	Lower	55.8
Adjusted suicide mortality/100,000 (2011-2013)	10.8*	Higher	8.4*	Lower	10.8	Higher	9.6
Adjusted self-inflicted injury ED visits (15+ yrs.)/10,000 (2011-2013)	13.9	Higher	11.8	Higher	10.7	Higher	8.5
Adjusted self-inflicted injury hospitalization/10,000 (2011-2013)	6.1	Lower	6.3	Lower	8.5	Higher	7.0

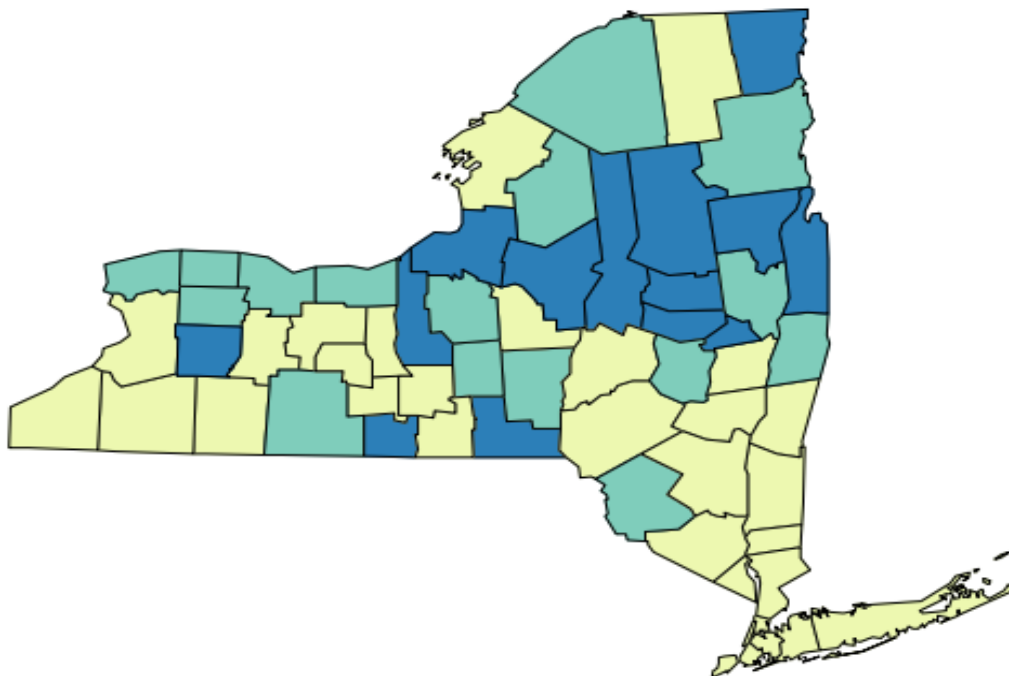
Age-adjusted % of Adults with Poor Mental Health for 14+ Days in the Last Month, 2013-2014



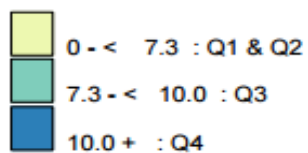
Age-adjusted Suicide Mortality Rate per 100,000, 2011-2013



Self-Inflicted Injury Hospitalization Rate per 10,000, 2011-2013



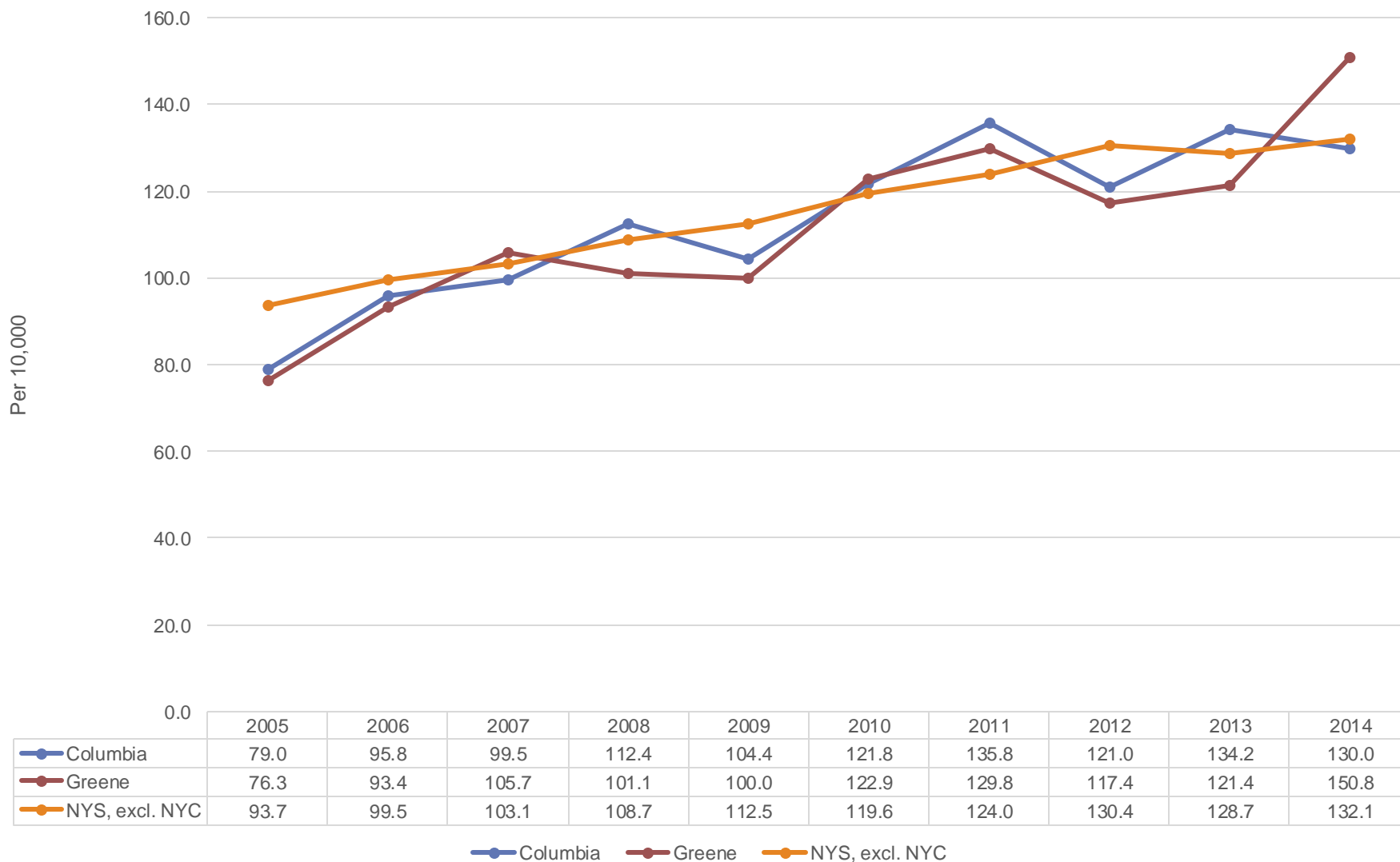
Hospital Discharge Rate
Counties Are Shaded Based On Quartile Distribution



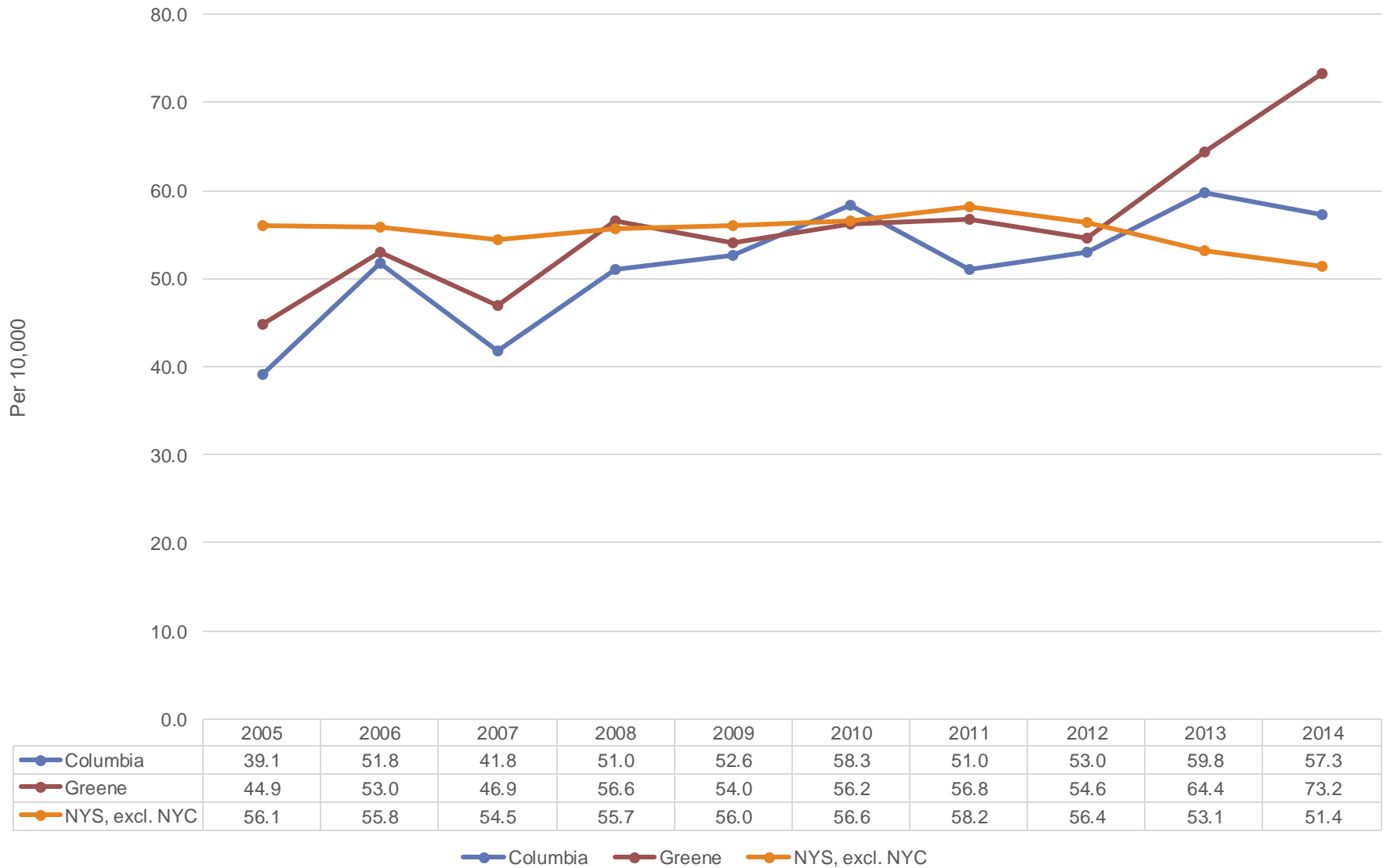
Adjusted Percentage of Adults with 14+ Poor Mental Health Days in Past Month, New York State (excl. NYC), Columbia, Greene and Capital Region; 2003, 2008-2009, 2013-14

	2003	2008-09	2013-14
Columbia	NA	10.1	9.5
Greene	NA	10.0	17.8
Capital Region	NA	NA	13.5
Upstate	9.4	10.9	11.8

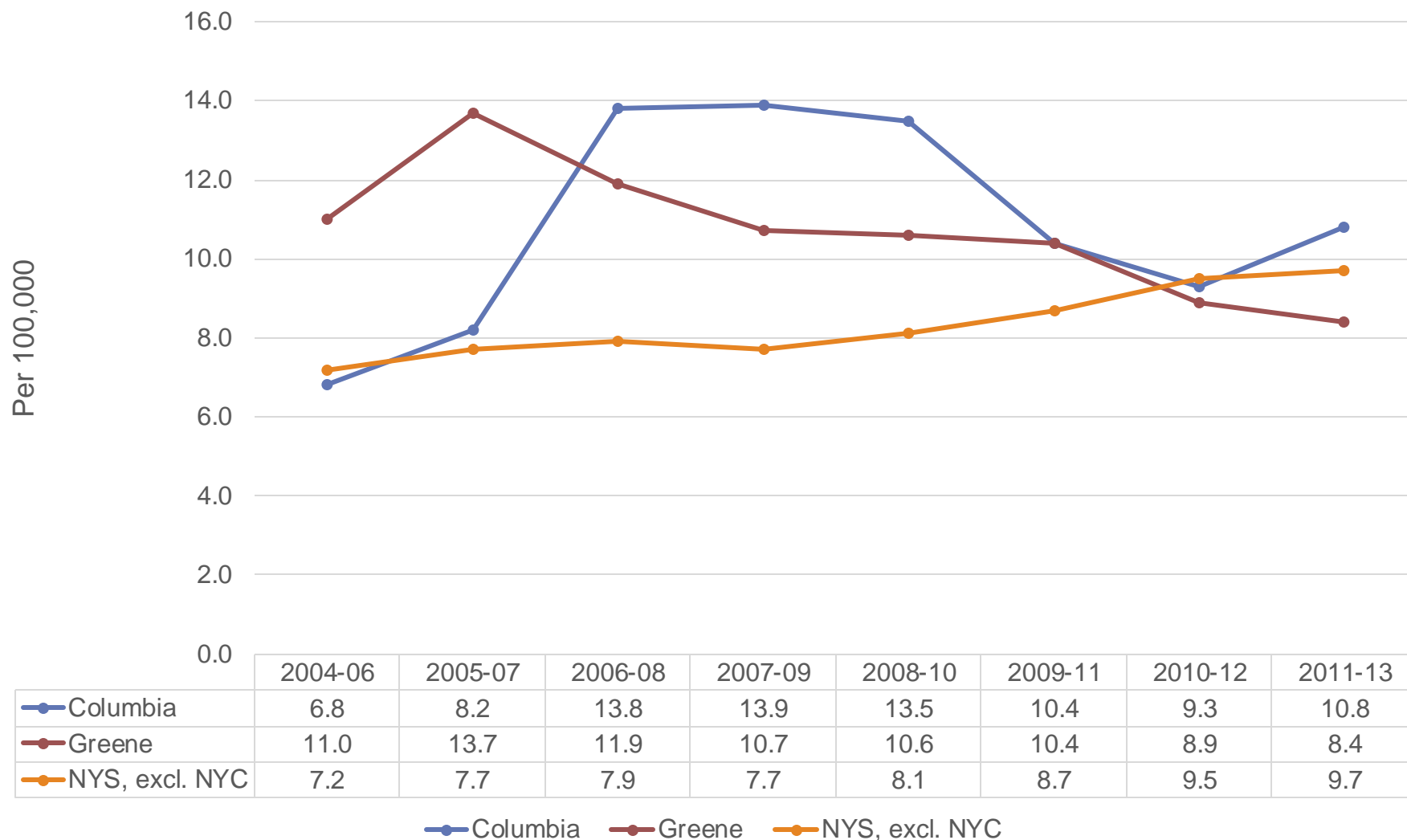
Age-adjusted Mental Diseases and Disorders ED Visit Rate per 10,000, Columbia, Greene, and NYS excl. NYC, 2005-2014



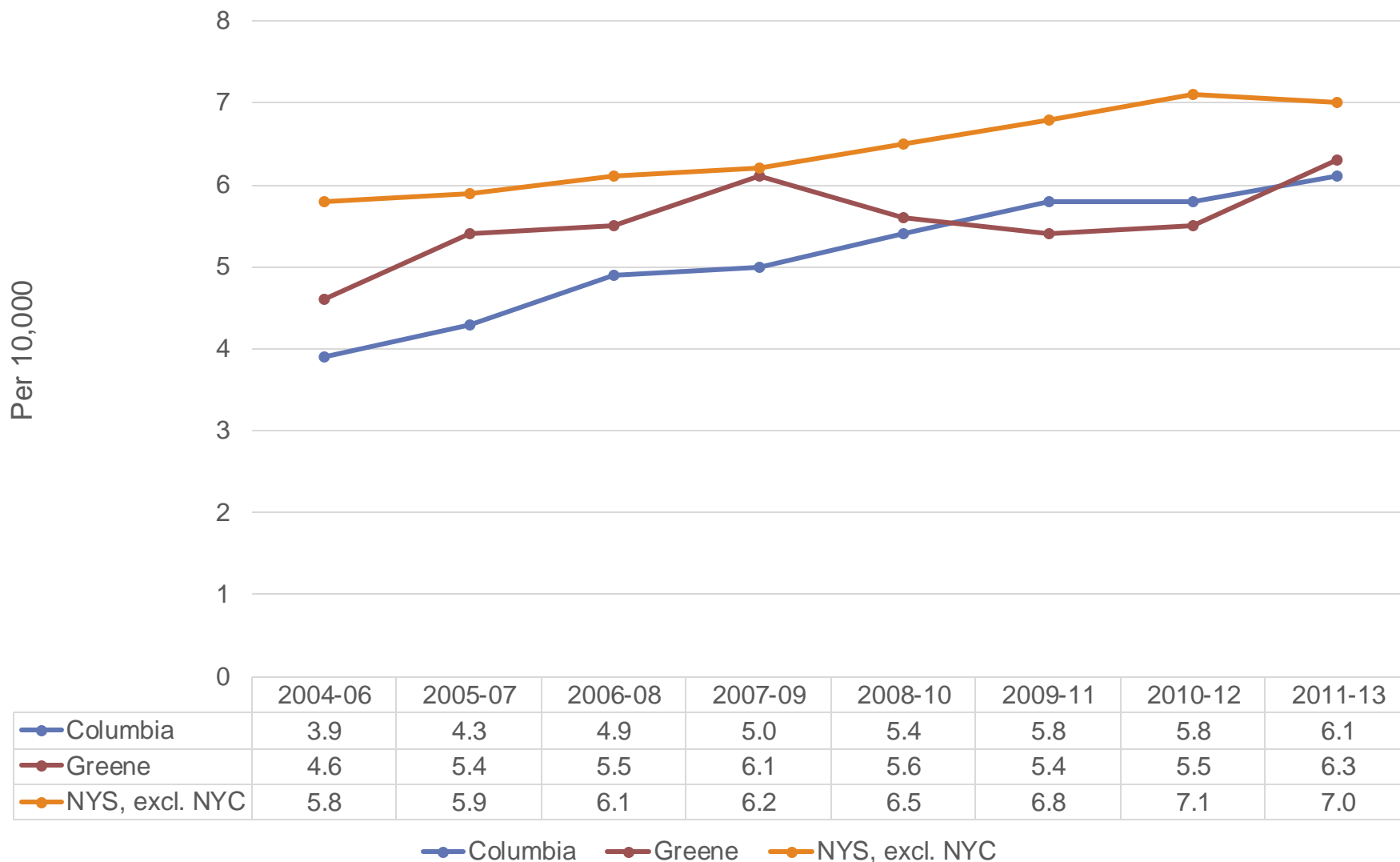
Age-adjusted Mental Diseases and Disorders Hospitalization Rate per 10,000, Columbia, Greene and NYS excl. NYC, 2005-2014



Age-adjusted Suicide Mortality Rate per 100,000, Columbia, Greene and NYS, excl. NYC, 2004-06 to 2011-13



Age-adjusted Self-Inflicted Injury Hospitalization Rate per 10,000, Columbia, Greene, and NYS excl. NYC, 2004-06 to 2011-13



EQUITY

Age-adjusted % Adults with Poor Mental Health for 14+ Days in Last Month, 2013-14

<u>% Poor MH Days</u>	Columbia	Greene	Capital Region	Upstate
Male	5.6	23.1	12.7	10.4
Female	12.5	9.6	13.5	12.1

Age-adjusted Mental Diseases and Disorders Rates per 10,000 by Gender, 2011-2013

<u>Hospitalizations</u>	Columbia	Greene	Capital Region	Upstate
Male	63.2	57.3	53.9	56.1
Female	45.2	60.6	53.6	55.6

<u>ED Visits</u>	Columbia	Greene	Capital Region	Upstate
Male	139.1	117.0	133.7	133.5
Female	121.0	131.6	114.1	121.9

Age-adjusted Mental Diseases and Disorders Rates per 10,000 by Race/Ethnicity, 2011-2013

<u>Hospitalizations</u>	Columbia	Greene	Capital Region
White non-Hispanic	51.6	60.8	50.4
Black non-Hispanic	59.2	47.9	89.4
Hispanic	58.0	16.8	43.2

<u>ED Visits</u>	Columbia	Greene	Capital Region
White non-Hispanic	126.3	130.9	116.3
Black non-Hispanic	141.6	70.8	210.4
Hispanic	126.1	55.0	95.2

Age-adjusted Self-inflicted Injury Rates per 10,000 (ages 15+) by Gender, 2011-2013

<u>Hospitalizations</u>	Columbia	Greene	Capital Region	Upstate
Male	8.2	7.5	8.1	7.0
Female	6.9	8.6	12.0	10.1

<u>ED Visits</u>	Columbia	Greene	Capital Region	Upstate
Male	15.2	10.6	8.6	7.3
Female	12.9	13.3	12.9	9.7

Top Neighborhood Rates

Mental Diseases and Disorders

ED Visits*

- Columbia County (130.0)
 - Hudson- 195.6
 - Pine Plains- 130.8
 - Germantown- 122.5
- Greene County (124.3)
 - Cairo/Durham- 171.2
 - Catskill- 168.1
 - Windham/Ash./Jewett- 144.1
- Upstate- 127.7

Hospitalizations*

- Columbia County (54.2)
 - Hudson- 87.4
 - Pine Plains- 54.5
 - Chatham- 47.2
- Greene County (58.9)
 - Cairo/Durham- 111.1
 - Catskill- 80.2
 - Windham/Ash./Jewett- 77.1
- Upstate- 55.8

*per 10,000 population

Top Neighborhood Rates

Self-inflicted Injury (ages 15+)

ED Visits*

- Columbia County (13.9)
 - Hudson- 21.3
 - Ichabod- 15.4
 - Chatham- 13.9
- Greene County (11.8)
 - Windham/Ash./Jewett- 19.0
 - Cairo/Durham- 18.5
 - Catskill- 16.1
- Upstate- 8.5

Hospitalizations*

- Columbia County (7.5)
 - Hudson- 10.6
 - Chatham- 7.4
 - Pine Plains- 7.3*
- Greene County (8.1)
 - Cairo/Durham- 14.4
 - Catskill- 8.6
 - Greenville- 7.3
- Upstate- 8.6

*per 10,000 population

Mental Health Summary

Columbia-Greene has an estimated:

- 18,100 adults (18+yrs.) with “Any Mental Illness”;
- 6,300 adults (18+yrs.) with “At Least One Major Depressive Episode”;
- 3,600 adults (18+yrs.) with “Serious Mental Illness”;
- 3,600 adults (18+yrs.) with “Serious Thoughts of Suicide”.

Mental Health Summary

Columbia-Greene counties annually have:

- 14,700 adults (18+yrs.) with poor mental health for 14+ days in last month;
- 1,294 Mental Disease/Disorder ED visits
- 643 Mental Disease/Disorder hospitalizations
- 100 Self-inflicted Injury ED visits;
- 72 Self-inflicted Injury hospitalizations;
- 16 deaths due to suicide.

Mental Health Summary

- The Columbia had lower, but Greene had a higher % of adults with poor mental health compared to ROS; **Greene** fell into the **4th risk quartile**;
- The % of adults with poor mental health days decreased slightly in Columbia, but **increased** sharply in **Greene** between 2008-09 and 2013-14;
- An estimated 20% of both county's adult population had a mental illness; 4% had a serious mental illness;

Mental Health Summary

- For mental disease/disorder ED visit rates, Columbia was higher and Greene lower than ROS; the reverse is true for hospitalization rates;
- Both counties had **increasing mental disease/disorder ED visit and hospitalization** rates over the last decade;
- Columbia county males had higher mental disease/disorder ED visit and hospitalization rates compared to females; for Greene county, females had higher rates than males;
- Columbia BNH's have higher ED visit and hospitalization rate compared to the WNH population; for Greene county, WNH's had the higher rates;
- High risk neighborhoods in Greene were 1.2-2.0 times higher for mental disease/disorder ED visit, and hospitalization rates than ROS, while only Hudson (1.6 times) had higher ED visit and hospitalization rates for Columbia;

Mental Health Summary

- Columbia had higher and Green lower suicide mortality rates compared to ROS;
- During the last decade, Greene showed a generally decreasing trend for suicide mortality; Columbia showed an increase from 2005-07 to 2006-08, a decrease through 2010-12, and an increase in 2011-13;
- Both counties had **higher self-inflicted ED visit rates** but lower self-inflicted hospitalization rates than ROS;
- Both Columbia and Greene had decreasing self-inflicted hospitalization rates over the last decade;
- Columbia males had higher self-inflicted hospitalization rates than the female population; Greene females had the higher hospitalization rates;
- High risk neighborhoods were 1.0-2.5 times higher for self-inflicted injury ED and hospitalization rates than ROS.

SUBSTANCE ABUSE IN THE COLUMBIA-GREENE

The Effect of Substance Abuse on the Population-NSDUH, Population 12+ Years of Age, 2013

	Columbia	Greene	Capital Region
Drug Dependence and Abuse	1,100	1,300	25,200
Needing/Not Receiving Drug Treatment	1,100	850	16,800

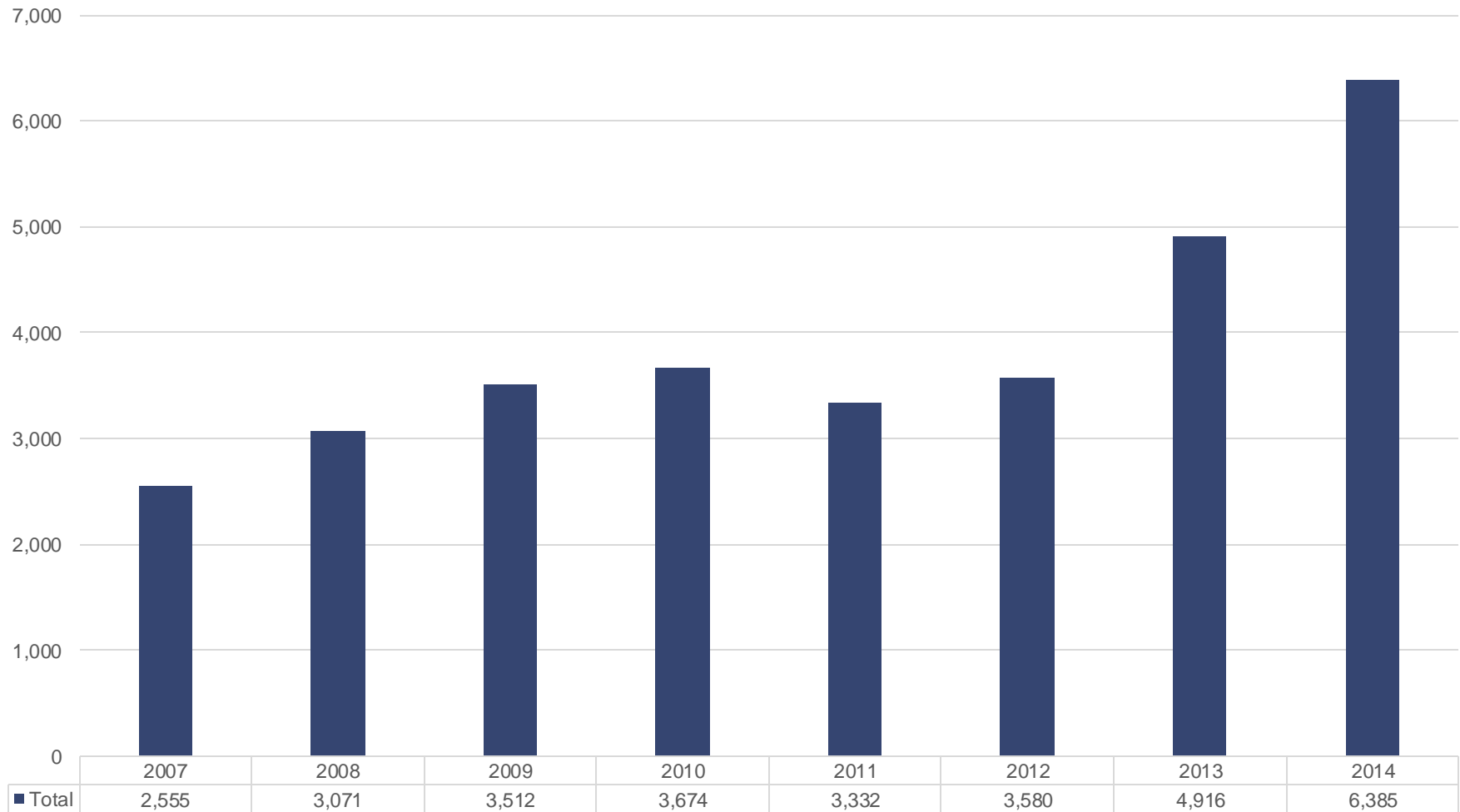
The Effect of Substance Abuse on the Population-NSDUH, Estimated Prevalence, Population 12+ Years of Age, 2013

	Columbia	Greene	Capital Region	New York State
Drug Dependence and Abuse	2%	3%	3%	3%
Needing/Not Receiving Drug Treatment	2%	2%	2%	3%

The Effect of Substance Abuse on the Population

	Columbia	Greene	Capital Region
Number of substance abuse (any diagnosis) ED visits (2014)	845	935	36,304
Number of substance abuse (any diagnosis) hospitalizations (2014)	1,320	1,367	18,680
Number of drug-related hospitalizations per year (2013)	154	113	1,927
Number of newborn drug-related hospitalization per year (2013)	s	s	110
Number of substance abuse deaths per year (2013)	4	4	45
Number of opiate ED visits per year (2014)	51	33	850
Number of opiate hospitalizations per year (2014)	18	48	338

Clients Receiving Heroin Dependency Treatment at OASAS Certified Chemical Dependency Treatment Programs, Capital Region (6 Counties), 2007-2014



■ Total

Finger Lakes HSA SPARCS and V.S. Portal Codes

- **Substance Abuse-Any diag. (ICD 9)**

291.0-291.9 - Alcohol induced mental disorders;
292.0-292.9 - Drug induced mental disorders;
303.0-303.9 - Alcohol dependence syndrome;
304.0-304.9 - Drug dependence syndrome;
305.0-305.9 – Nondependent abuse of drugs.

- **Substance Abuse Mortality (ICD 10)**

X 40-X 44 – Accidental Poisonings by Exposure to Noxious Substances

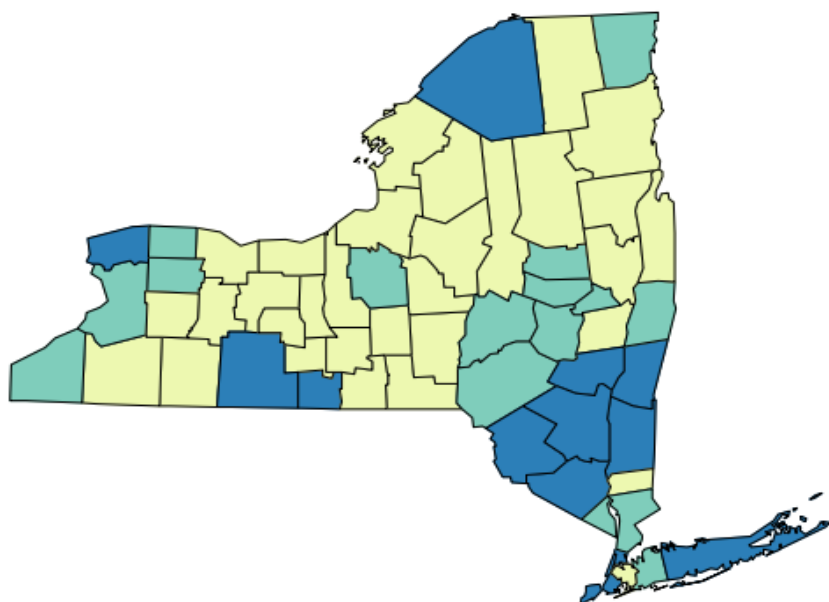
- **Substance Abuse-Opiates (ICD 9)**

304.0 – Opioid type dependence;
304.7 – Combinations of opioid type drug with any drug dependence;
965.0-965.2 – Opiate poisonings;
E850.0-E850.2 – Accidental opiate poisonings.

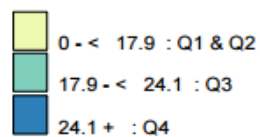
Substance Abuse Indicators and Significance Compared to New York State (excl. NYC), 2011-2013

	Columbia		Greene		Capital Region		Upstate
Adjusted drug-related hospitalizations/10,000	24.5	Sig. Higher	27.2	Sig. Higher	18.0	Lower	21.1
Newborn drug-related hospitalization rate/10,000 newborn discharges	91.2	Lower	100.8	Lower	116.7	Lower	123.4
Adjusted substance abuse (any diagnosis) ED visit rate/10,000	183.1	Lower	195.5	Lower	359.4	Higher	302.4
Adjusted substance abuse (any diagnosis) hospitalization rate/10,000	184.2	Higher	216.8	Higher	182.9	Higher	176.1
Adjusted substance abuse mortality rate/ 100,000	5.0	Lower	5.9	Lower	3.8	Lower	9.3
Adjusted opiate ED visit rate/10,000	8.0	Higher	7.9	Higher	7.1	Higher	6.8
Adjusted opiate hospitalization rate/10,000	7.8	Higher	10.6	Higher	6.0	Lower	6.6

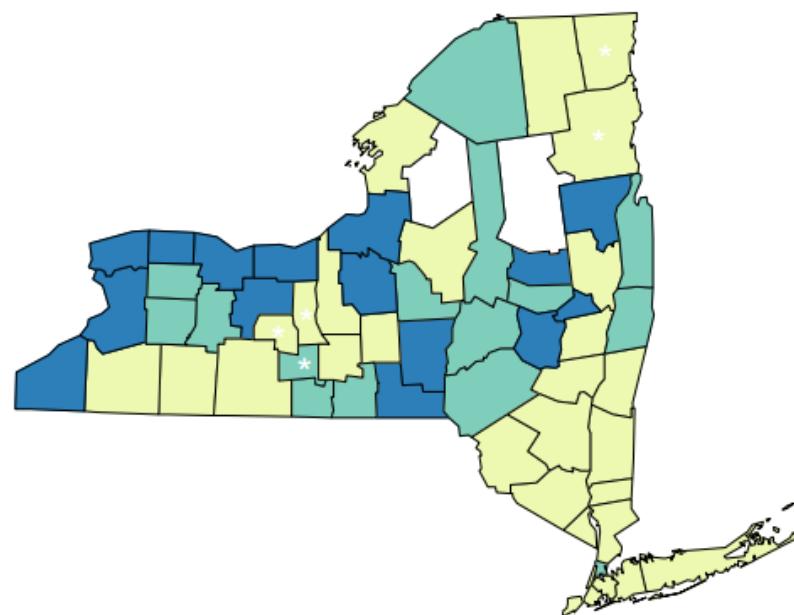
Age-adjusted Drug Hospitalization Rate per 10,000, 2011-2013



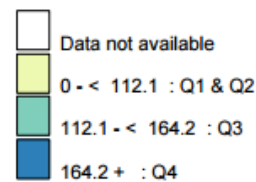
Hospital Discharge Rate
Counties Are Shaded Based On Quartile Distribution



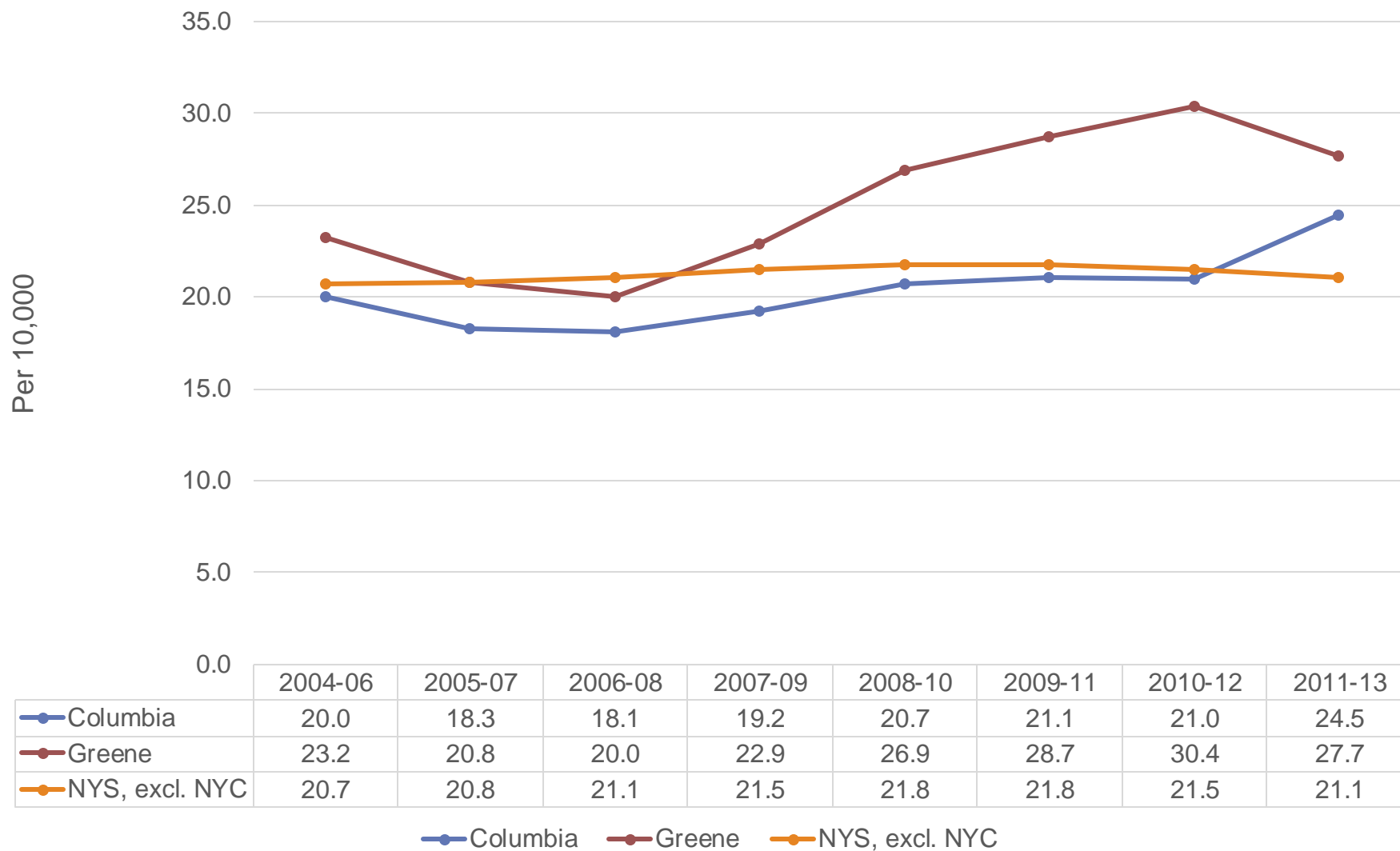
Newborn Drug-Related Discharge Rate per 10,000 Newborn Discharges 2011-2013



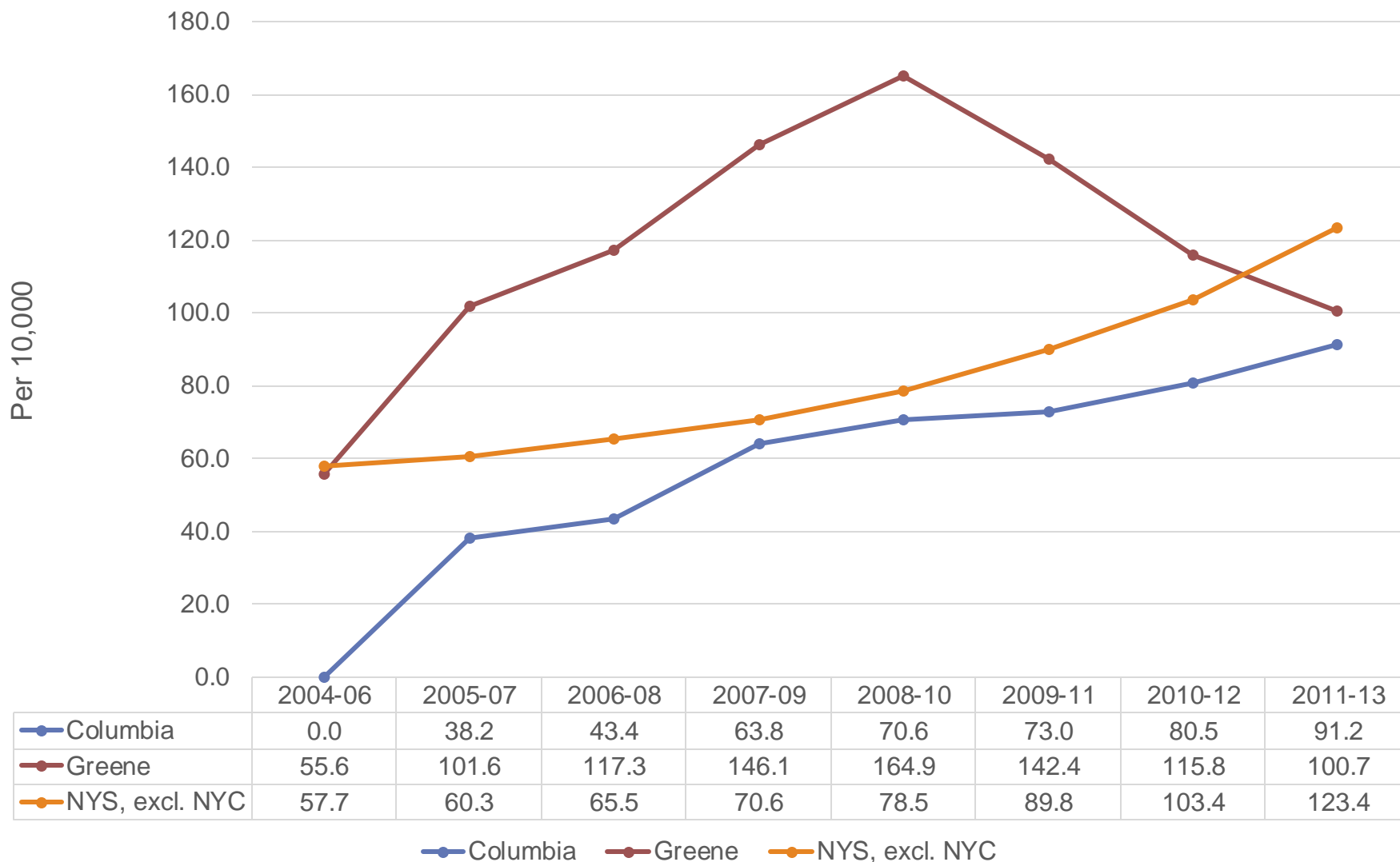
Drug-related Diagnosis Rate
Counties Are Shaded Based On Quartile Distribution
(* Fewer than 10 events in the numerator, therefore the rate is unstable)



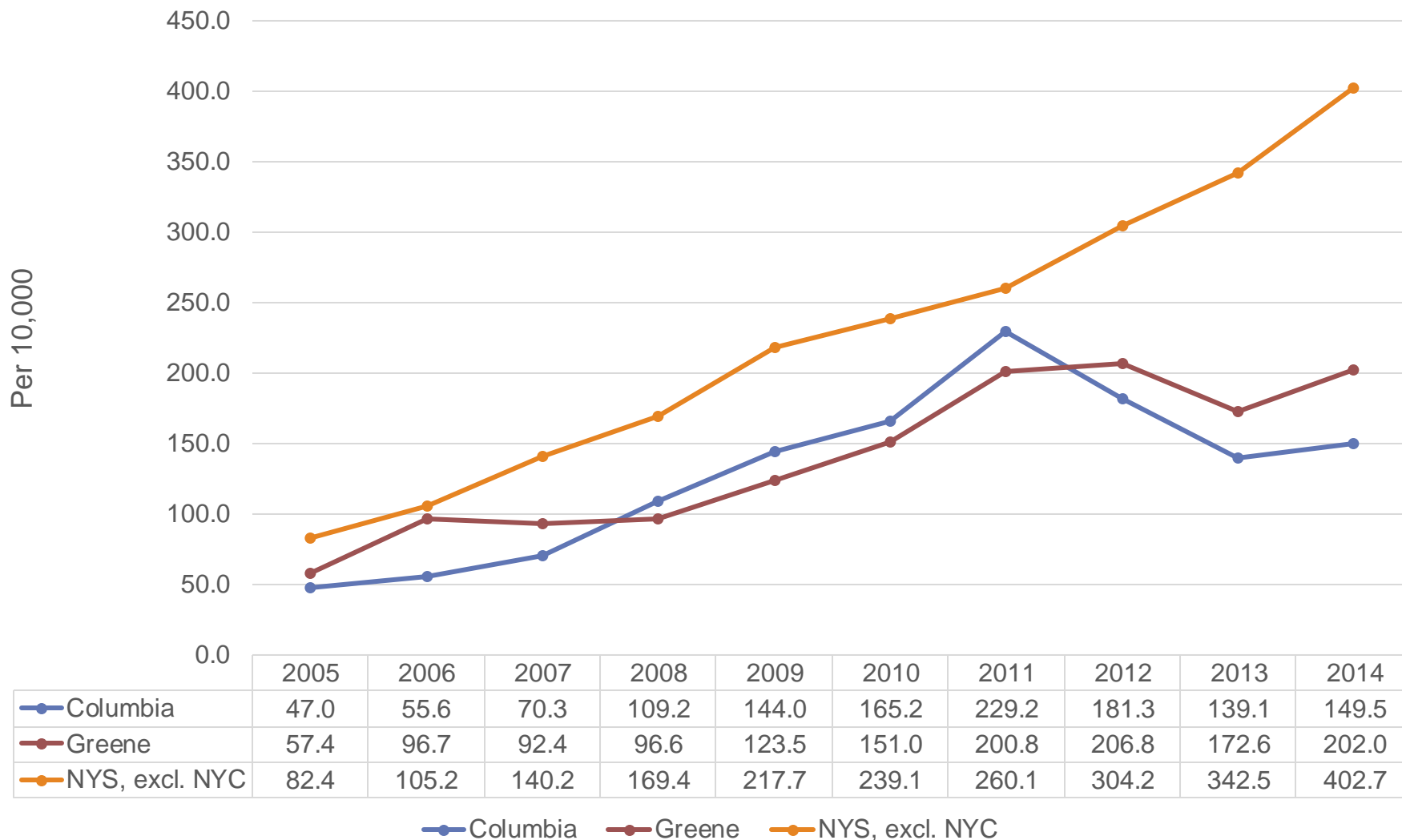
Age-adjusted Drug-related Hospitalization Rate per 10,000, Columbia, Greene, and NYS excl. NYC, 2004-06 to 2011-13



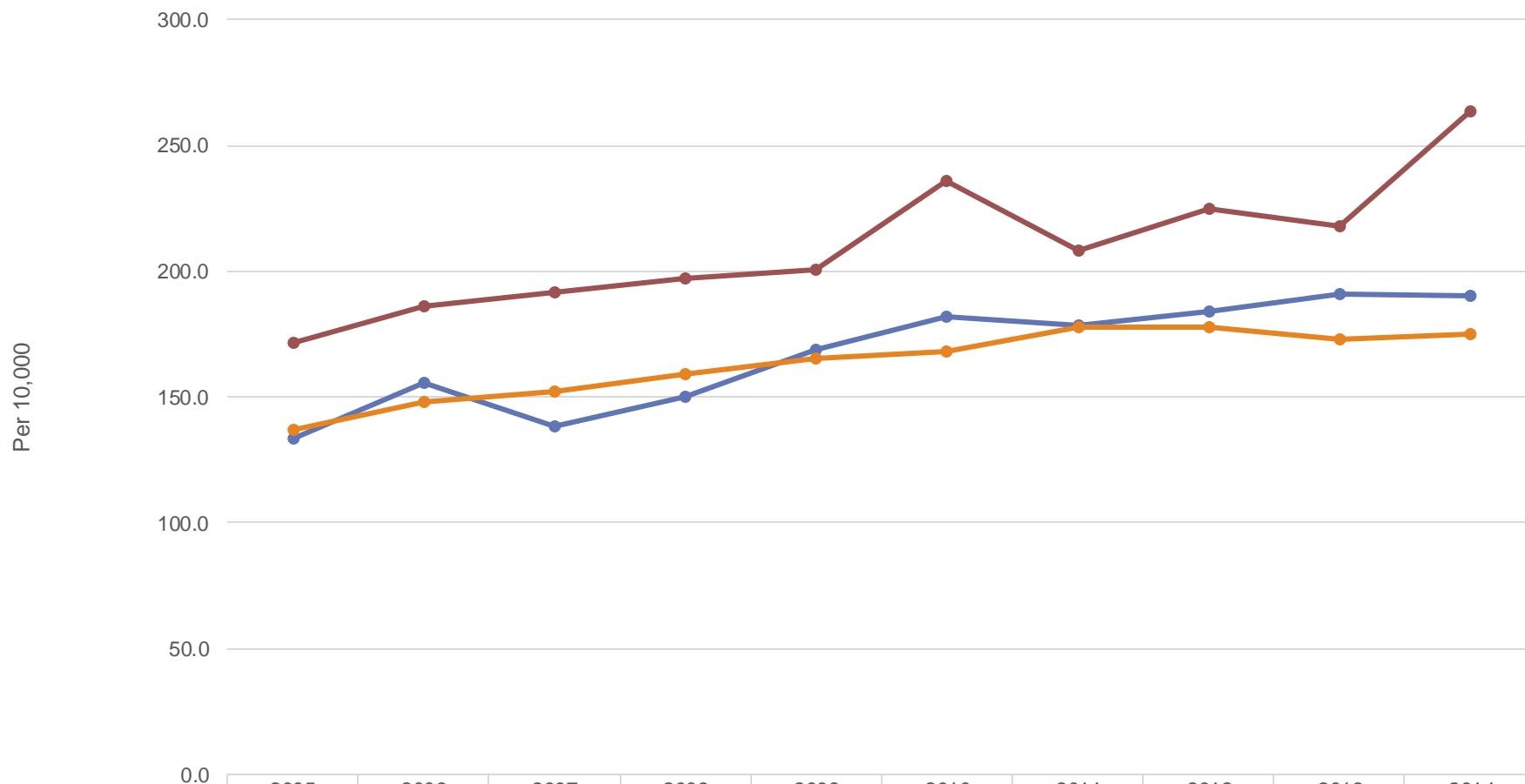
Newborn Drug-related Discharge Rate per 10,000 Newborn Discharges, Columbia, Greene, and NYS excl. NYC, 2004-06 to 2011-13



Age-adjusted Substance Abuse (any diagnosis) ED Visit Rate per 10,000, Columbia, Greene, and NYS excl. NYC, 2005-2014



Age-adjusted Substance Abuse (any diagnosis) Hospitalization Rate per 10,000, Columbia, Greene, and NYS excl. NYC, 2005-2014



— Columbia

— Greene

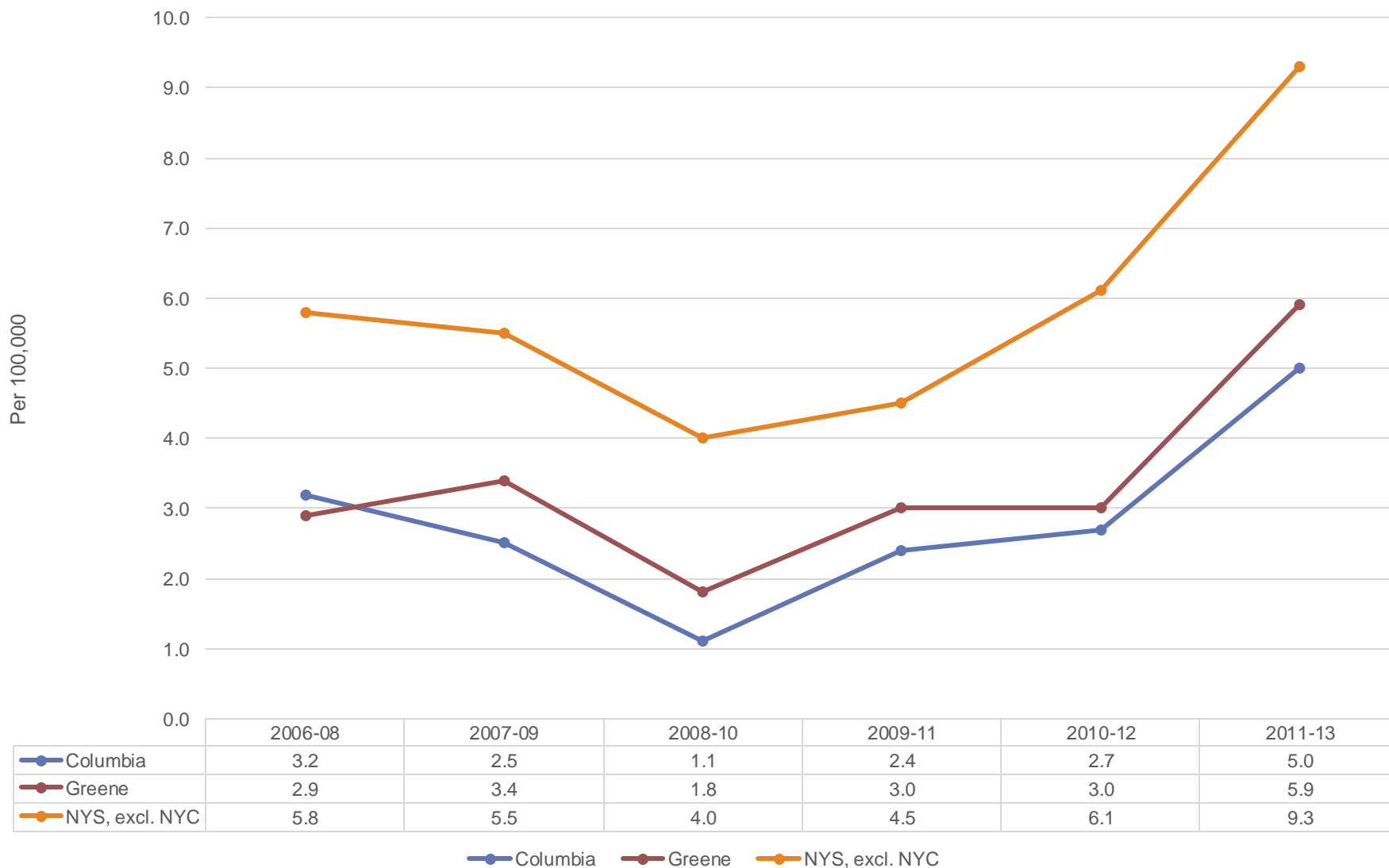
— NYS, excl. NYC

— Columbia

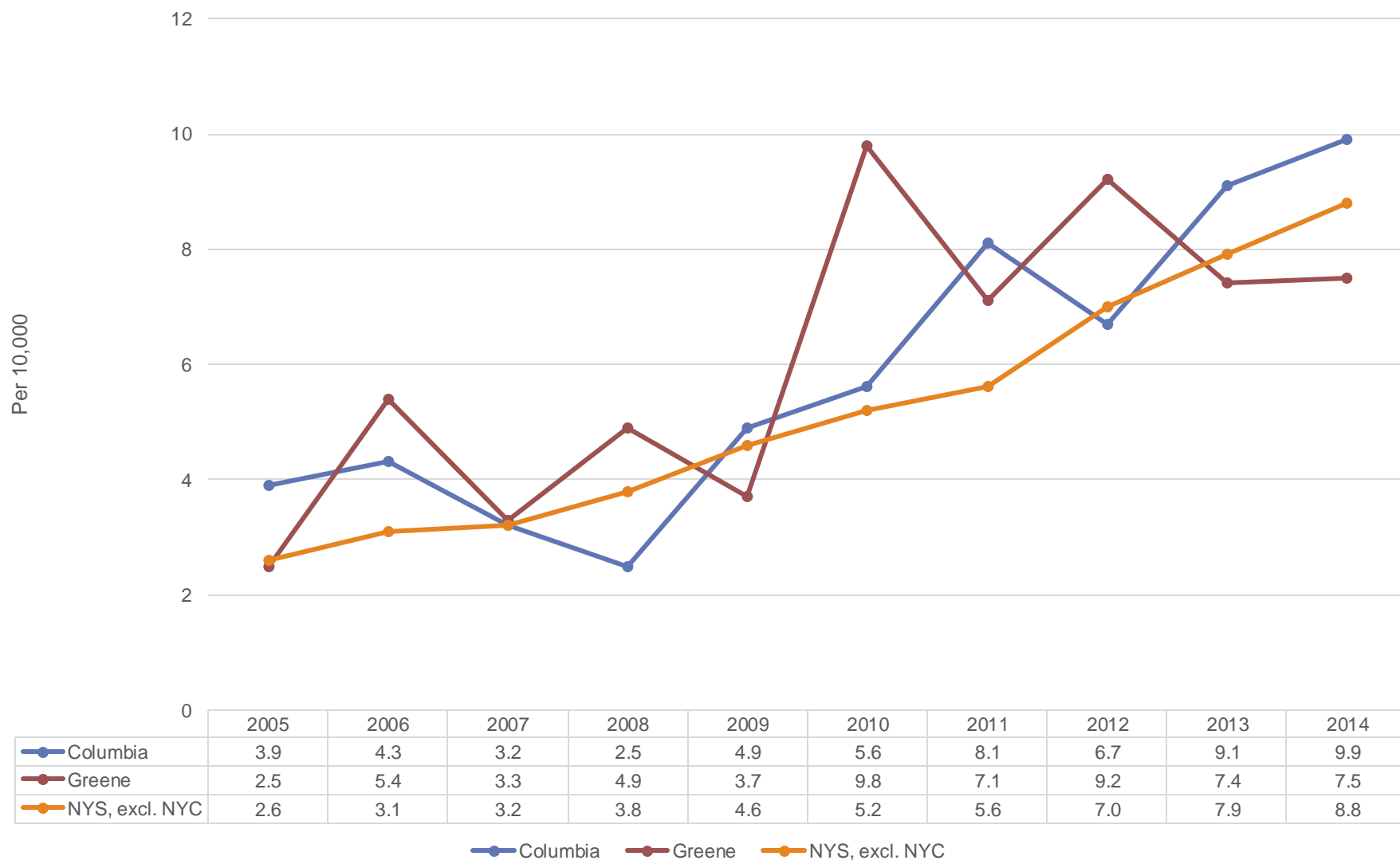
— Greene

— NYS, excl. NYC

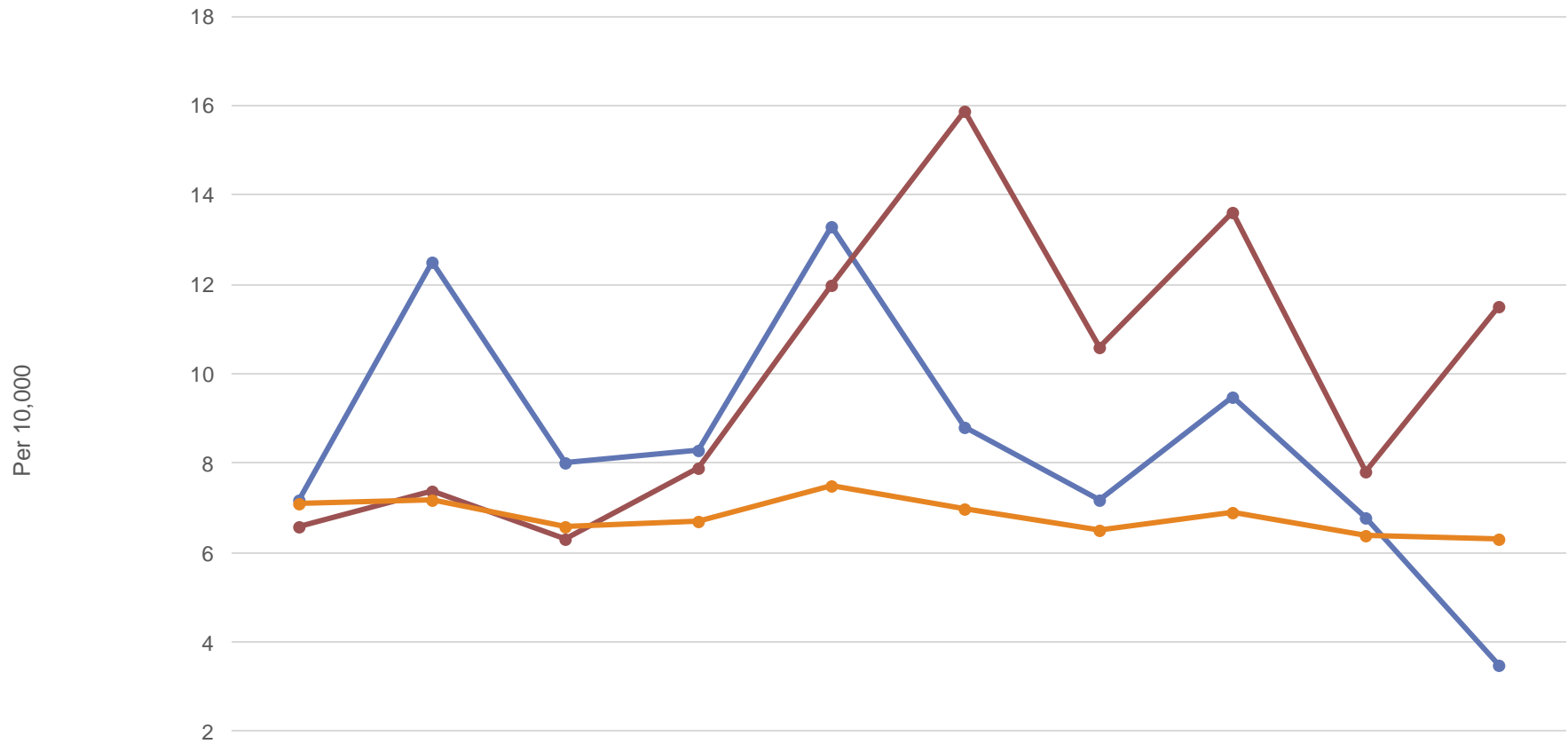
Age-adjusted Substance Abuse Mortality Rate per 100,000, Columbia, Greene and NYS excl. NYC, 2006-08 to 2011-13



Age-adjusted Opioid ED Visit Rate per 10,000, Columbia, Greene and NYS excl. NYC-2005-2014



Age-adjusted Opioid Hospitalization Rate per 10,000, Columbia, Greene, and NYS excl. NYC, 2005-2014



	2005	2006	2007	2008	2009	2010	2011	2012	2013	2014
—●— Columbia	7.2	12.5	8.0	8.3	13.3	8.8	7.2	9.5	6.8	3.5
—●— Greene	6.6	7.4	6.3	7.9	12.0	15.9	10.6	13.6	7.8	11.5
—●— NYS, excl. NYC	7.1	7.2	6.6	6.7	7.5	7.0	6.5	6.9	6.4	6.3

—●— Columbia —●— Greene —●— NYS, excl. NYC

EQUITY

Age-adjusted Substance Abuse Mortality Rates per 100,000 by Gender, 2009-2013

<u>Mortality</u>	Columbia	Greene	Capital Region	Upstate
Male	4.7	4.2	4.3	9.2
Female	2.5	3.9	1.8	3.8

Age-adjusted Substance Abuse (any diagnosis) Rates per 10,000 by Gender, 2011-2013

<u>Hospitalizations</u>	Columbia	Greene	Capital Region
Male	211.3	227.8	208.5
Female	157.1	207.5	158.8

<u>ED Visits</u>	Columbia	Greene	Capital Region
Male	200.0	190.5	372.2
Female	166.2	200.5	347.7

Age-adjusted Opiate Rates per 10,000 by Gender, 2011-2013

<u>Hospitalizations</u>	Columbia	Greene	Capital Region
Male	9.5	10.4	7.2
Female	6.1	11.2	4.8

<u>ED Visits</u>	Columbia	Greene	Capital Region
Male	10.9	9.0	8.9
Female	4.9	6.6	5.3

Adjusted Drug-related Hospitalization Rate per 10,000 by Race/Ethnicity, 2011-2013

	Columbia	Greene	Upstate
White non-Hispanic	25.6	30.2	20.8
Black non-Hispanic	17.4	6.9*	27.6
Hispanic	9.3*	15.5	13.7

Age-adjusted Opiate Rates per 10,000 by Race/Ethnicity, 2011-2013

<u>Hospitalizations</u>	Columbia	Greene	Capital Region
White non-Hispanic	8.4	12.0	6.1
Black non-Hispanic	2.2*	0.0*	5.3
Hispanic	4.2*	4.6*	2.2
Other	11.5*	3.4*	12.6

<u>ED Visits</u>	Columbia	Greene	Capital Region
White non-Hispanic	8.4	8.9	7.5
Black non-Hispanic	6.4*	0.0*	5.7
Hispanic	4.1*	1.0*	3.2
Other	15.3*	41.1*	12.6

Top Neighborhood Rates

Substance Abuse (any diagnosis)

ED Visits*

- Columbia County (183.1)
 - Germantown- 300.3
 - Hudson- 255.2
 - Ichabod- 175.4
- Greene County (195.5)
 - Cairo/Durham- 255.7
 - Catskill- 225.1
 - Windham/Ash./Jewett- 205.7
- Upstate- 302.4

Hospitalizations*

- Columbia County (184.2)
 - Hudson- 277.4
 - Pine Plains- 191.1
 - Germantown- 190.1
- Greene County (216.8)
 - Cairo/Durham- 309.3
 - Catskill- 258.8
 - Greenville- 180.4
- Upstate- 176.1

*per 10,000 population

Top Neighborhood Rates

Substance Abuse Mortality per 100,000 (2009-2013)

Substance Abuse Mortality

- Columbia County (3.7)
 - Chatham- 7.7
 - Ichabod- 4.6
 - Hudson- 3.6
- Greene County (4.2)
 - Hunter/Tannersville- 11.9
 - Cairo/Durham- 7.4
 - Coxackie/Athens- 3.8
- Upstate- 6.5

Top Neighborhood Rates Opioid (2009-2013)

ED Visits*

- Columbia County (6.9)
 - Germantown- 13.6
 - Hudson- 13.6
 - Pine Plains- 7.8
- Greene County (7.4)
 - Hunter/Tannersville- 11.5
 - Cairo/Durham- 11.0
 - Windham/Ash./Jewett- 10.1
- Upstate- 6.1

Hospitalizations*

- Columbia County (9.1)
 - Germantown- 17.1
 - Hudson- 10.9
 - Pine Plains- 10.3
- Greene County (12.0)
 - Cairo/Durham- 21.5
 - Greenville- 13.9
 - Windham/Ash./Jewett- 13.5
- Upstate- 6.9

*per 10,000 population

Substance Abuse Summary

Columbia and Greene are estimated to have:

- 2,400 individuals 12+ years of age with “Drug Dependence and Abuse”;
- 1,950 individuals 12+ years of age “Needing/Not Receiving Drug Treatment”.

Substance Abuse Summary

Columbia and Greene annually have:

- 1,583 Substance Abuse (any diagnosis) ED visits;
- 2,447 Substance Abuse (any diagnosis) hospitalizations;
- 267 Drug-related hospitalizations;
- 8 Newborn Drug-related discharges;
- 8 substance abuse deaths.

Substance Abuse Summary

- Both counties have lower substance abuse ED visit rates, but **higher** hospitalization rates compared to ROS;
- Columbia and Greene had **higher** drug-related hospitalization rates compared to ROS, and fell into the **4th risk quartile**. However, both counties had lower newborn drug-related discharges, and substance abuse mortality compared to ROS ;
- Both counties had increasing trends for substance abuse ED visit rates through 2011, Columbia's then decreased through 2013 while Greene's remained stable;
- Both Columbia and Greene showed an **increasing trend** in substance abuse hospitalizations, and drug-related hospitalizations and substance abuse mortality over the past decade;
- The counties had generally increasing trends in newborn drug-related hospitalization rates until 2008-10, then decreasing through 2011-13;

Substance Abuse Summary

- Columbia males had higher substance abuse-related rates compared to females; for Greene, males had slightly higher mortality and hospitalization rates, but lower ED visit rates compared to their female counterparts;
- **White non-Hispanics** had about **1.5** (Columbia) to **4.4** (Greene) times the drug-related hospitalization rates compared to their black non-Hispanic counterparts;
- Neither county high risk neighborhoods were higher than ROS for substance abuse ED visits, while the counties high risk neighborhoods had 1.1 to 1.7 times the substance abuse hospitalization rates than ROS.
- For substance abuse mortality, only the neighborhoods of Hunter/Tannersville, Chatham, and Cairo/Durham had rates higher than ROS;
- **Over 90% increase** in clients receiving Heroin Dependency Treatment at Capital Region OASAS certified treatment programs between 2011 to 2014.

Finger Lakes HSA SPARCS and V.S. Portal Codes

- **Substance Abuse-Any diag. (ICD 9)**

291.0-291.9 - Alcohol induced mental disorders;
292.0-292.9 - Drug induced mental disorders;
303.0-303.9 - Alcohol dependence syndrome;
304.0-304.9 - Drug dependence syndrome;
305.0-305.9 – Nondependent abuse of drugs.

- **Substance Abuse mortality (ICD 10)**

X 40-X 44 – Accidental Poisonings by Exposure to Noxious Substances

- **Substance Abuse-Opiates (ICD 9)**

304.0 – Opioid type dependence;
304.7 – Combinations of opioid type drug with any drug dependence;
965.0-965.2 – Opiate poisonings;
E850.0-E850.2 – Accidental opiate poisonings.

ALCOHOL ABUSE IN COLUMBIA-GREENE

The Effect of Alcohol Abuse on the Population-NSDUH, Population 12+ Years of Age, 2013

	Columbia	Greene	Capital Region
Alcohol Dependence and Abuse	3,300	2,500	58,900
Needing/Not Receiving Alcohol Treatment	3,300	2,500	58,900

The Effect of Alcohol Abuse on the Population, 2013

	Columbia	Greene	Capital Region
Number of adult who binge drank during the past month (2013-14)	12,600	12,400	121,300
Number of alcohol related motor vehicle injuries and deaths per year	29	33	410
Number of cirrhosis hospitalization per year	17	9	241
Number of cirrhosis deaths per year	10	4	115

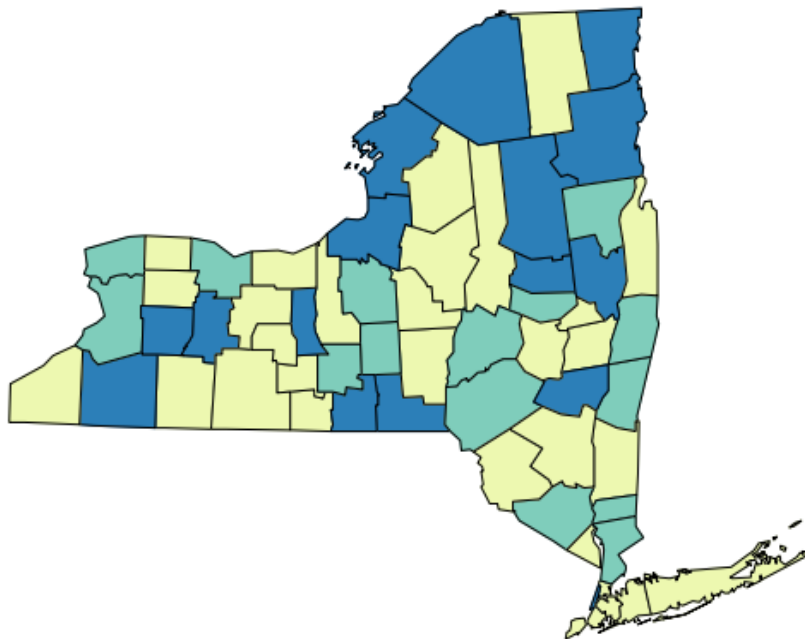
The Effect of Alcohol Abuse on the Population-NSDUH, Estimated Prevalence, Population 12+ Years of Age, 2013

	Columbia	Greene	Capital Region	New York State
Alcohol Dependence and Abuse	6%	6%	7%	7%
Needing/Not Receiving Alcohol Treatment	6%	6%	7%	6%

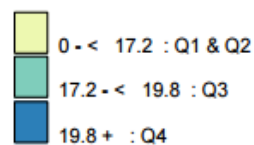
Substance Abuse Indicators and Significance Compared to New York State (excl. NYC)

	Columbia		Greene		Capital Region		Upstate
Age-adjusted percentage of adult binge drinking during the past month	20.1	Higher	25.3	Higher	18.3	Higher	17.4
Alcohol related motor vehicle injuries and deaths/100,000	48.6	Higher	58.9	Sig. Higher	44.1	Similar	44.3
Adjusted cirrhosis hospitalization rate/10,000	1.7	Lower	1.6	Lower	2.2	Same	2.2
Adjusted cirrhosis mortality rate/100,000	9.6	Sig. Higher	8.2	Sig. Higher	8.8	Higher	7.2

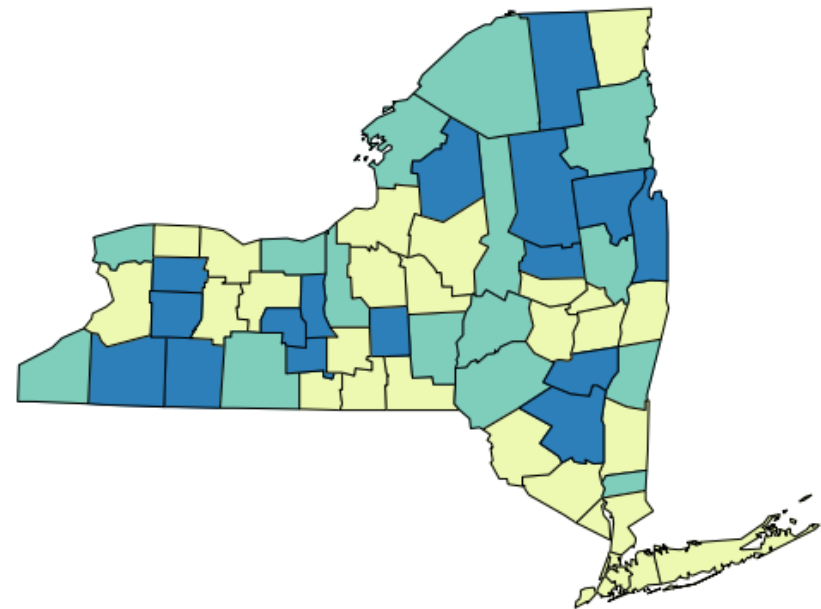
% of Adults who Binge Drink, 2013-14



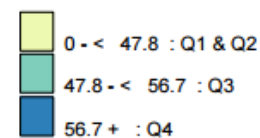
Age-adjusted percentage of adults
Counties Are Shaded Based On Quartile Distribution



Alcohol-related Motor Vehicle Injuries and Deaths per 100,000, 2011-2013

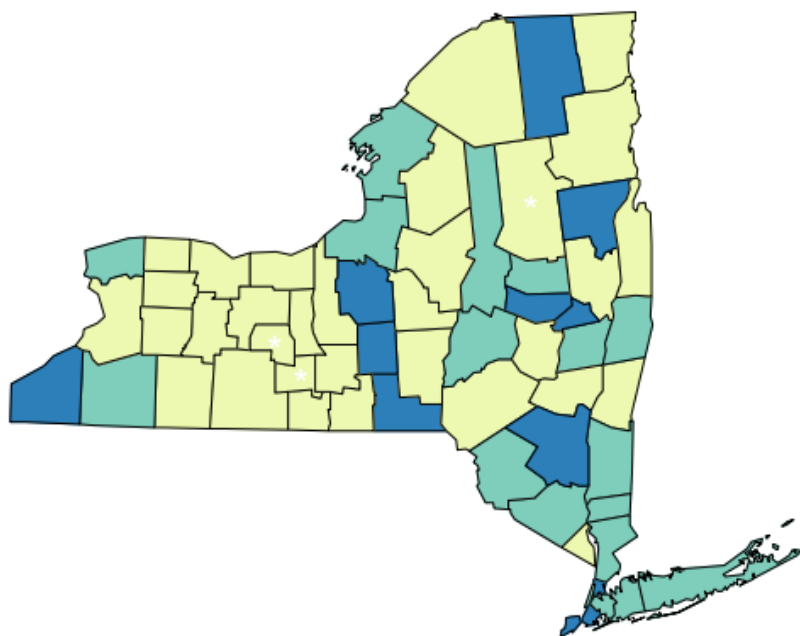


Rate
Counties Are Shaded Based On Quartile Distribution

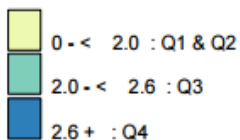


Source: 2011-2013 NYS Department of Motor Vehicles Data as of June, 2015

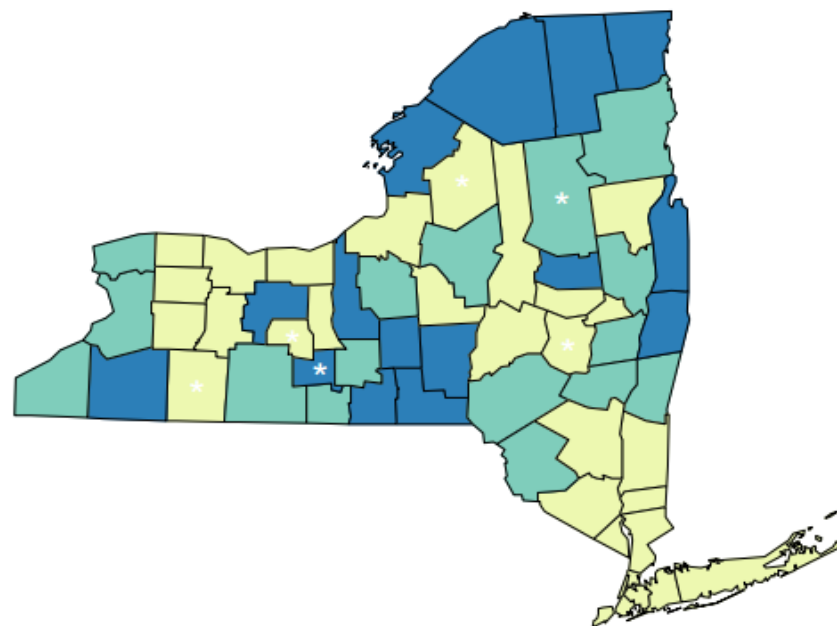
Age-adjusted Cirrhosis Hospitalization Rate per 10,000, 2011-2013



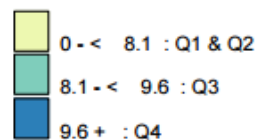
Hospital Discharge Rate
Counties Are Shaded Based On Quartile Distribution
(* Fewer than 10 events in the numerator, therefore the rate is unstable)



Age-adjusted Cirrhosis Mortality Rate per 100,000, 2011-2013



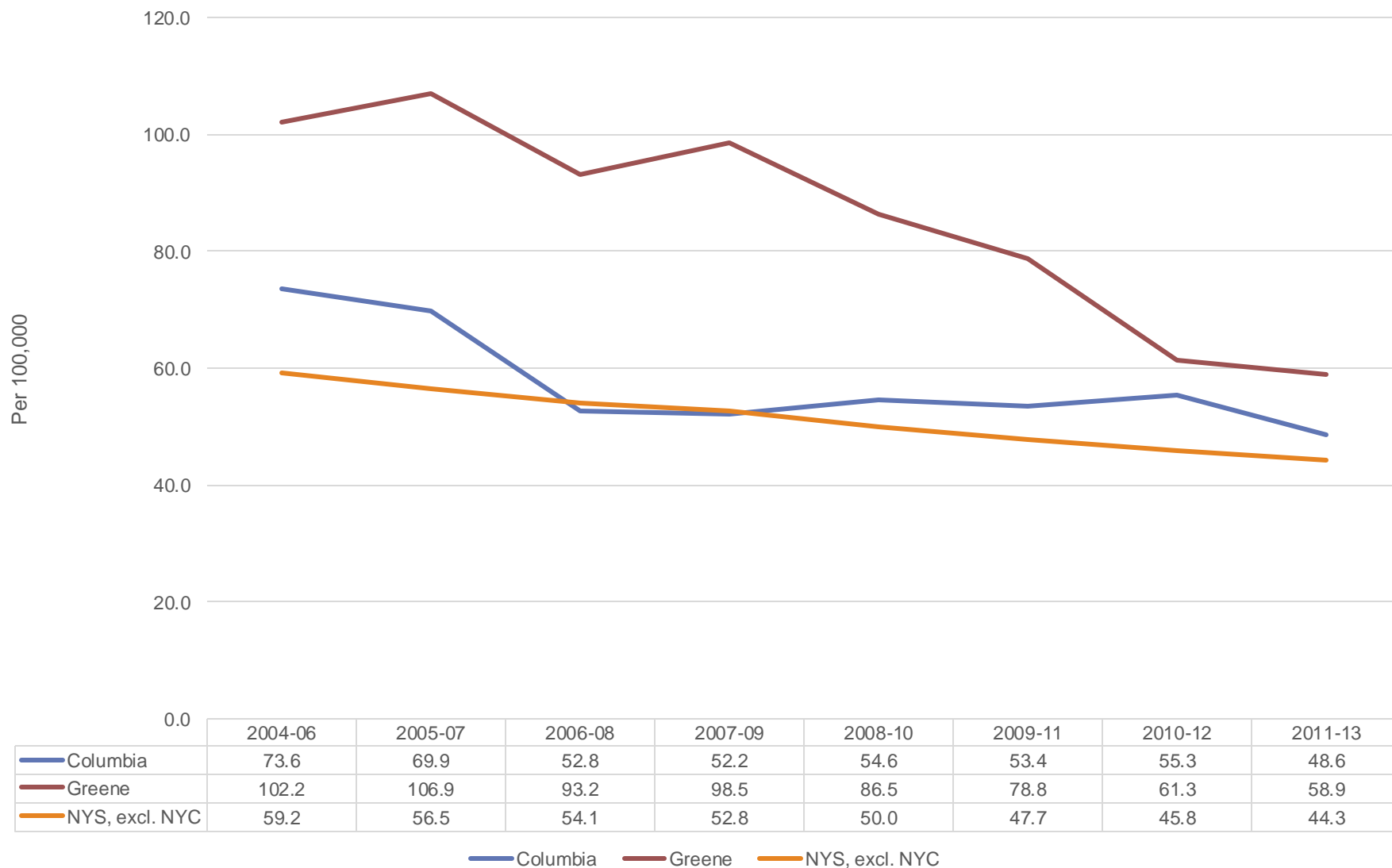
Death Rate
Counties Are Shaded Based On Quartile Distribution
(* Fewer than 10 events in the numerator, therefore the rate is unstable)



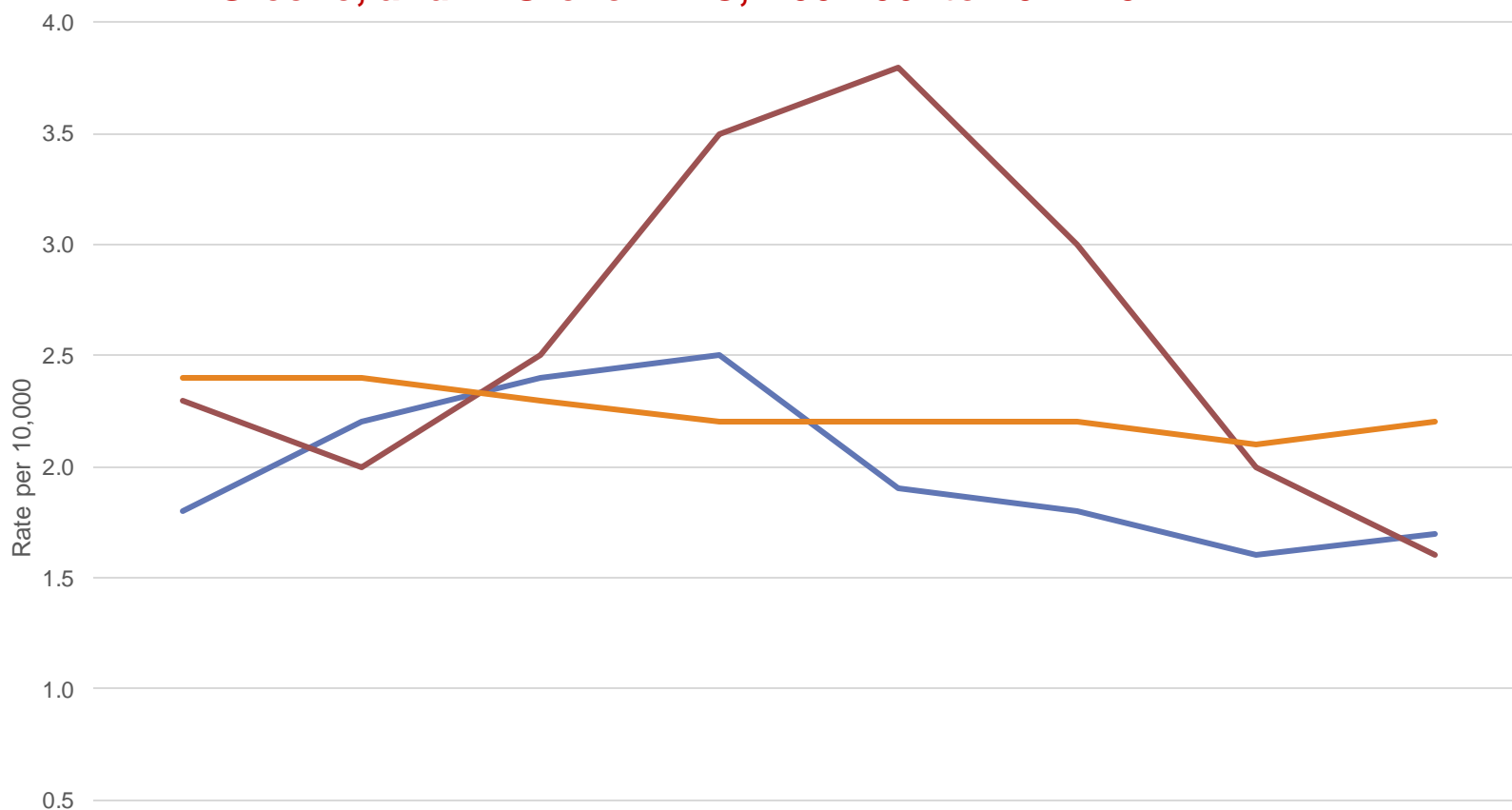
Adjusted Percentage of Adults who were Binge Drinkers for New York State (excl. NYC), Columbia, Greene and Capital Region; 2003, 2008-2009, 2013-14

	2003	2008-09	2013-14
Columbia	13.0	21.6	20.1
Greene	13.0	25.8	25.3
Capital Region	NA	NA	18.3
Upstate	N/A	18.1	17.4

Alcohol-related Motor Vehicle Injury and Death Rate per 100,000, Columbia, Greene and NYS, excl. NYC, 2004-06 to 2011-13

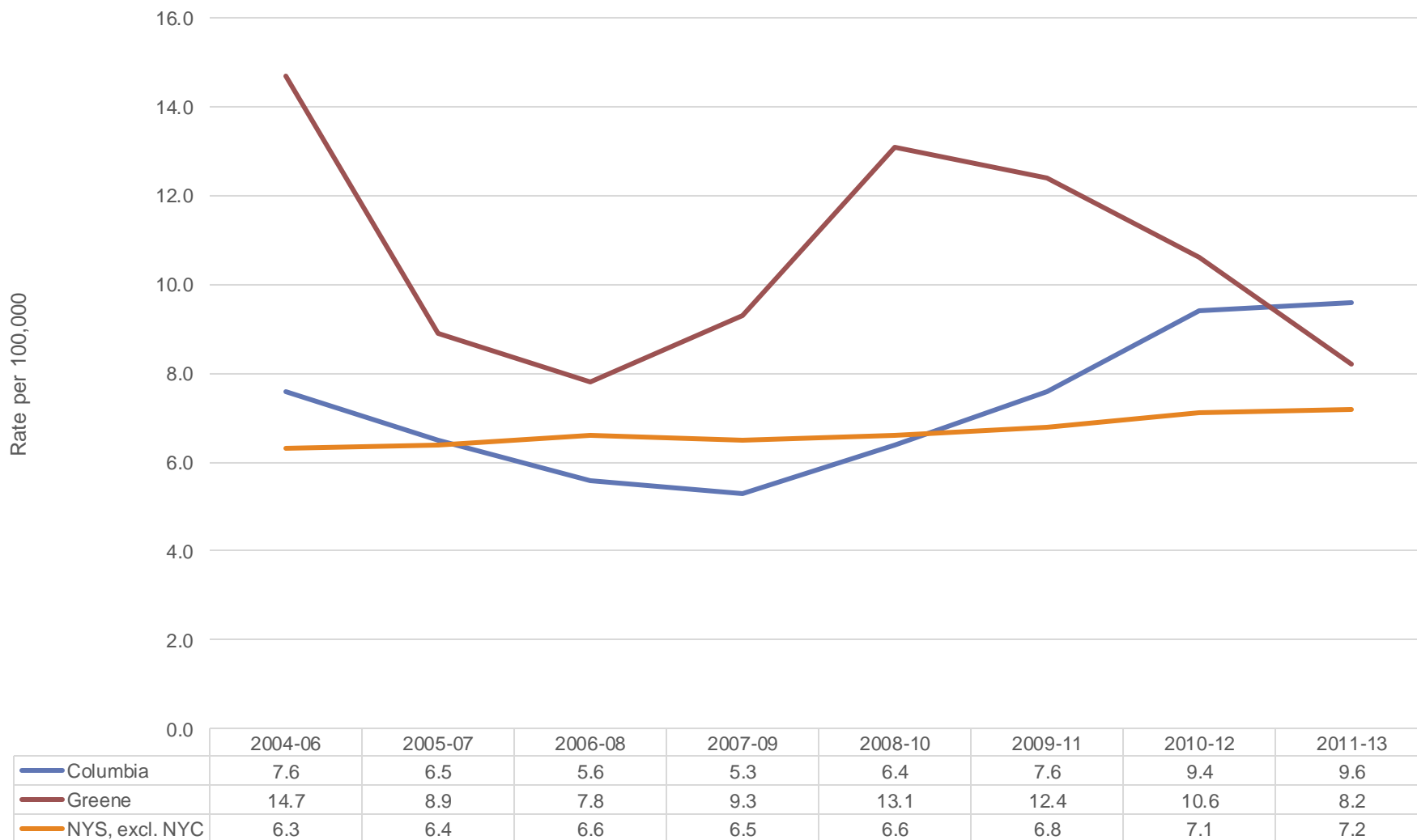


Age-adjusted Cirrhosis Hospitalization Rate per 10,000, Columbia, Greene, and NYS excl. NYC, 2004-06- to 2011-13



	2004-06	2005-07	2006-08	2007-09	2008-10	2009-11	2010-12	2011-13
— Columbia	1.8	2.2	2.4	2.5	1.9	1.8	1.6	1.7
— Greene	2.3	2.0	2.5	3.5	3.8	3.0	2.0	1.6
— NYS, excl. NYC	2.4	2.4	2.3	2.2	2.2	2.2	2.1	2.2

Age-adjusted Cirrhosis Mortality Rate per 100,000, Columbia, Greene, and NYS excl. NYC, 2004-06- to 2011-13



EQUITY

% Adults Binge Drinking in Past Month, 2013-14

<u>% Binge Drink</u>	Columbia	Greene	Capital Region	Upstate
Male	21.6	30.2	21.9	22.8
Female	12.1	15.9	12.9	11.4

Alcohol Abuse Summary

Columbia and Greene annually have:

- 25,000 binge drinkers;
- 5,800 individuals 12+ years estimated to have alcohol dependence or abuse;
- 5,800 individuals 12+years estimated needing/not receiving alcohol treatment;
- 62 alcohol-related motor vehicle injuries and deaths;
- 26 cirrhosis hospitalizations;
- 14 deaths due to cirrhosis.

Alcohol Abuse Summary

- Both counties had an estimated 6% with alcohol dependence and abuse, and 6% needing but not receiving treatment;
- Columbia and Greene had higher adult binge drinking rates compared to ROS, both fell into the 4th risk quartile;
- Binge drinking rates decreased slightly between 2008-09 and 2013-14;
- Both counties had significantly higher cirrhosis mortality rates, but lower hospitalization rates compared to ROS. Columbia and Greene fell into the 3rd risk quartile for cirrhosis mortality;
- Both counties cirrhosis hospitalization rates increased during the early part of the last decade, and decreased in the latter part of the decade;
- For cirrhosis mortality rates, Columbia's has been increasing and Greene's decreasing since 2008-10;

Alcohol Abuse Summary

- Males were 1.7-1.8 times more likely to binge drink than females;
- Both counties had higher or sig. higher alcohol-related motor vehicle injury and death rates compared to ROS. Columbia fell into the 3rd and Greene into the 4th risk quartile;
- MV Injury and Death trends have been decreasing in the past decade for Columbia and Greene;