

PROMOTE MENTAL HEALTH AND PREVENT SUBSTANCE ABUSE

MENTAL HEALTH IN ALBANY-RENSSELAER

Mental Health Summary

Albany-Rensselaer has an estimated:

- 70,000 adults (18+yrs.) with “Any Mental Illness”;
- 28,400 adults (18+yrs.) with “At Least One Major Depressive Episode”;
- 14,750 adults (18+yrs.) with “Serious Mental Illness”;
- 14,750 adults (18+yrs.) with “Serious Thoughts of Suicide”.

The Effect of Mental Health on the Population-NSDUH, Estimated Prevalence, Population 18+ Years of Age, 2012

	Albany	Rensselaer	Capital Region	New York State
Any Mental Illness	19%	19%	20%	19%
At Least One Major Depressive Episode	8%	7%	7%	6%
Serious Mental Illness	4%	4%	4%	4%
Serious Thoughts of Suicide	4%	4%	4%	4%

Finger Lakes HSA SPARCS and V.S. Portal Codes

Mental Diseases and Disorders-primary diagnosis (ICD 9)

- **Psychosis (290-299)**
- **Neurotic disorders, personality disorders, and other nonpsychotic mental disorders (300-316)**
- **Mental retardation (317-319)**

Excluding:

**291.0-291.9 - Alcohol induced mental disorders;
292.0-292.9 - Drug induced mental disorders;
303.0-303.9 - Alcohol dependence syndrome;
304.0-304.9 - Drug dependence syndrome.**

Mental Health Summary

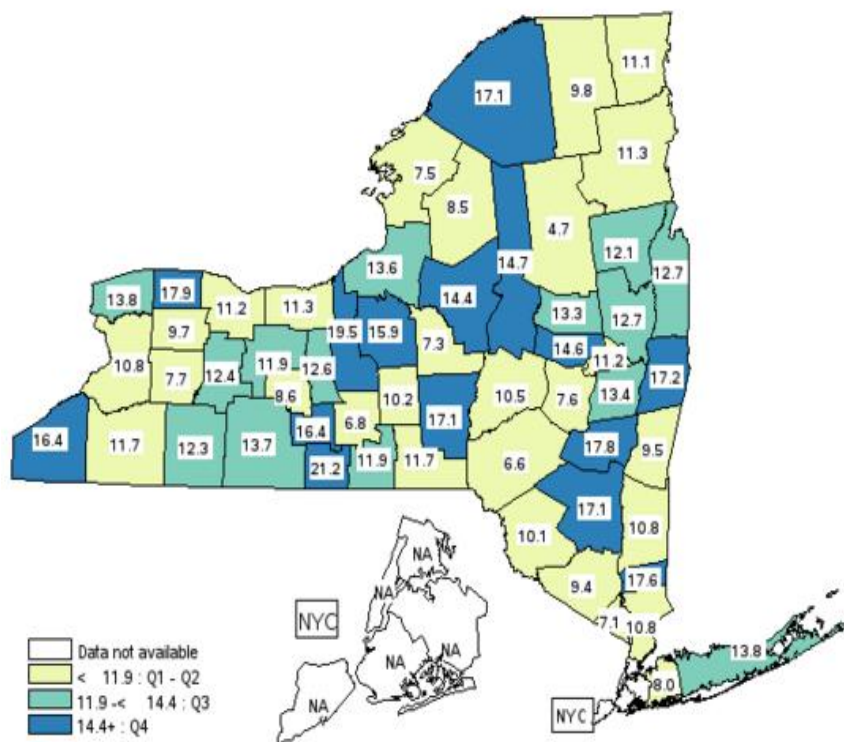
Albany and Rensselaer counties annually have:

- 45,100 adults (18+yrs.) with poor mental health for 14+ days in last month;
- 6,541 Mental Disease/Disorder ED visits
- 2,091 Mental Disease/Disorder hospitalizations
- 353 Self-inflicted Injury ED visits;
- 340 Self-inflicted Injury hospitalizations;
- 47 deaths due to suicide.

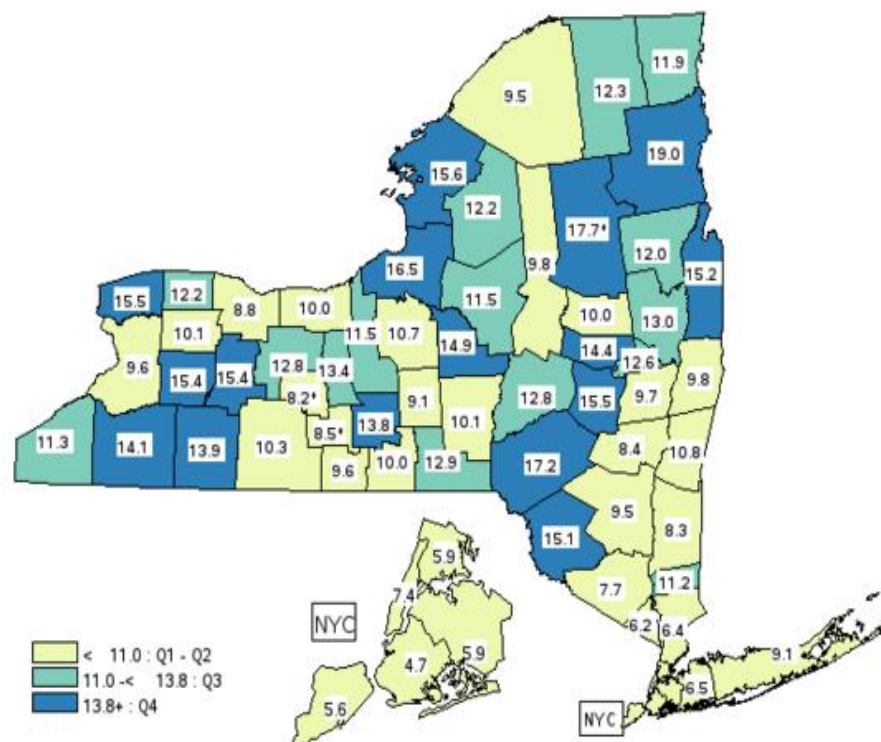
Mental Health Indicators and Significance Compared to New York State (excl. NYC)

	Albany		Rensselaer		Capital Region		Upstate
% adults with poor mental health for 14+ days in last month (2013-14)	13.4	Higher	17.2	Higher	13.5	Higher	11.8
Adjusted mental disease and disorder ED Visits/10,000 (2011-2013)	112.8	Lower	85.1	Lower	123.9	Lower	127.7
Adjusted mental disease and disorder hospitalizations/10,000 (2011-2013)	35.9	Lower	55.0	Similar	53.7	Lower	55.8
Adjusted suicide mortality/100,000 (2011-2013)	9.7	Slightly Higher	9.8	Slightly Higher	10.8	Higher	9.6
Adjusted self-inflicted injury ED visits (15+ yrs.)/10,000 (2011-2013)	12.8	Higher	6.1	Lower	10.7	Higher	8.5
Adjusted self-inflicted injury hospitalization/10,000 (2011-2013)	7.0	Same	8.6	Sig. Higher	8.5	Higher	7.0

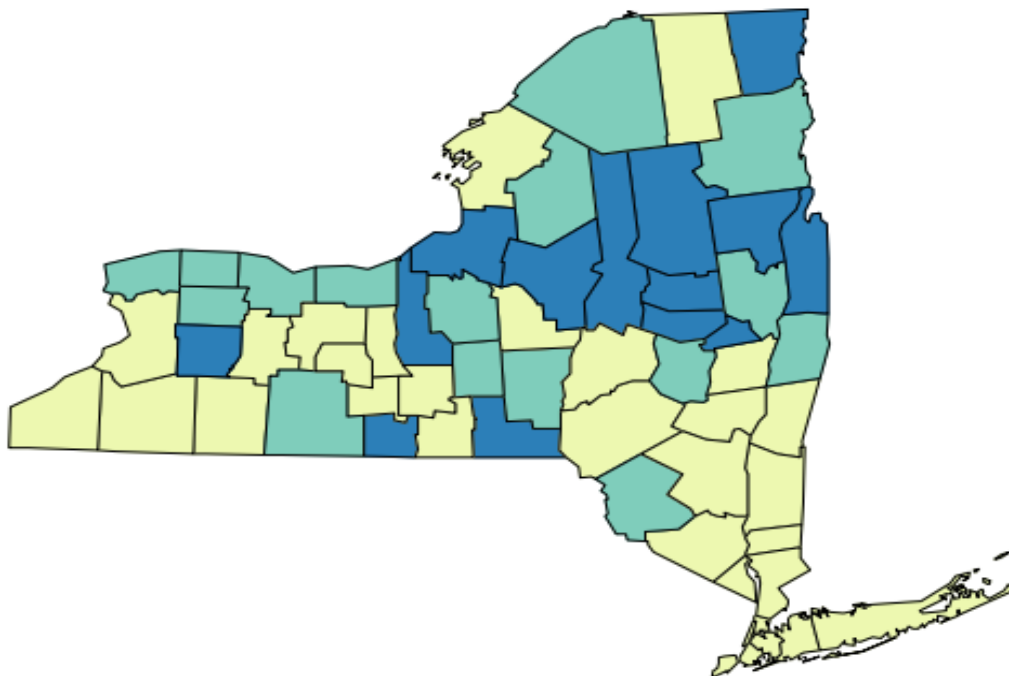
Age-adjusted % of Adults with Poor Mental Health for 14+ Days in the Last Month, 2013-2014



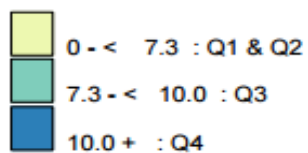
Age-adjusted Suicide Mortality Rate per 100,000, 2011-2013



Self-Inflicted Injury Hospitalization Rate per 10,000, 2011-2013



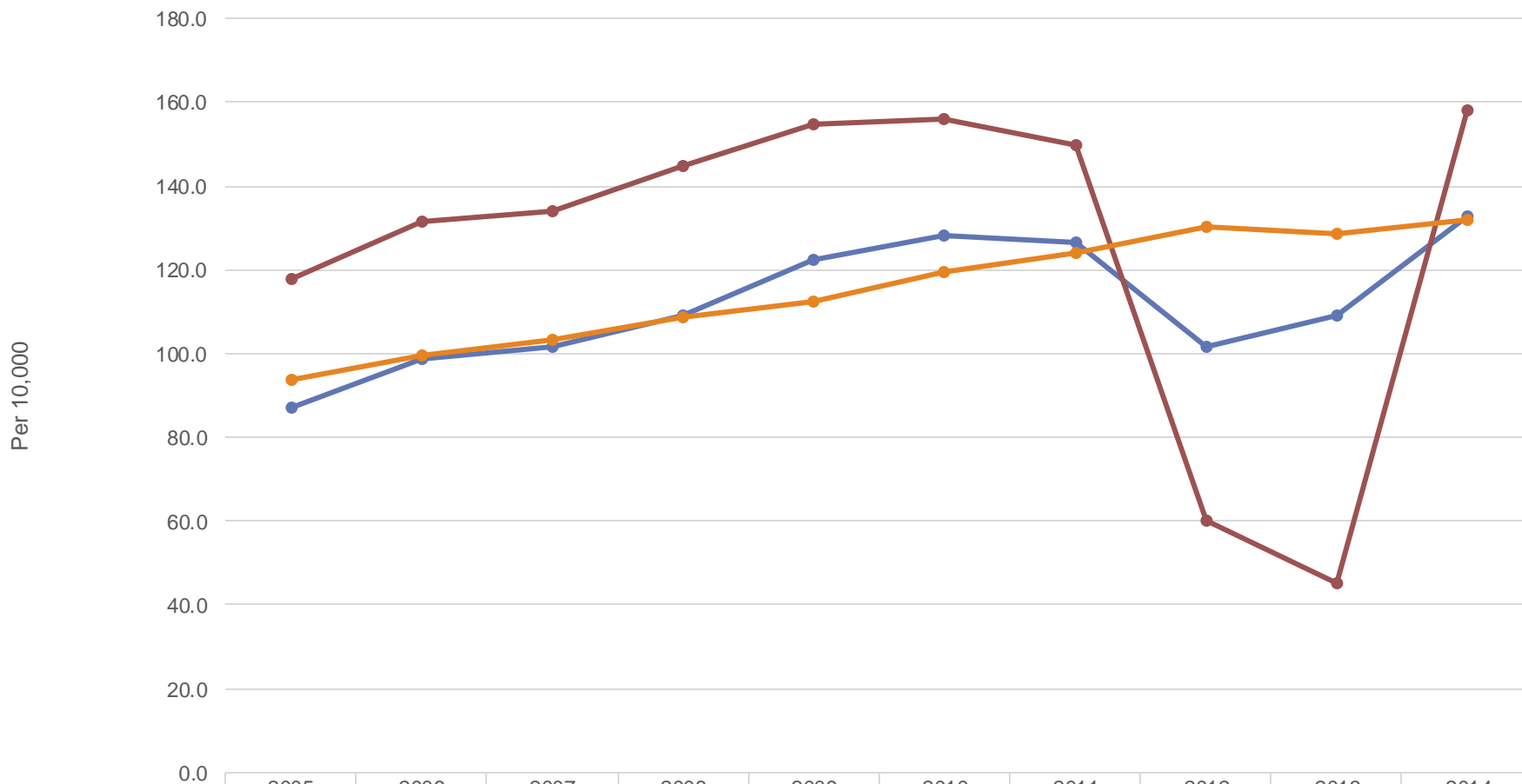
Hospital Discharge Rate
Counties Are Shaded Based On Quartile Distribution



Adjusted Percentage of Adults with 14+ Poor Mental Health Days in Past Month, New York State (excl. NYC), Albany, Rensselaer and Capital Region; 2003, 2008-2009, 2013-14

	2003	2008-09	2013-14
Albany	NA	10.4	13.4
Rensselaer	NA	9.2	17.2
Capital Region	NA	NA	13.5
Upstate	9.4	10.9	11.8

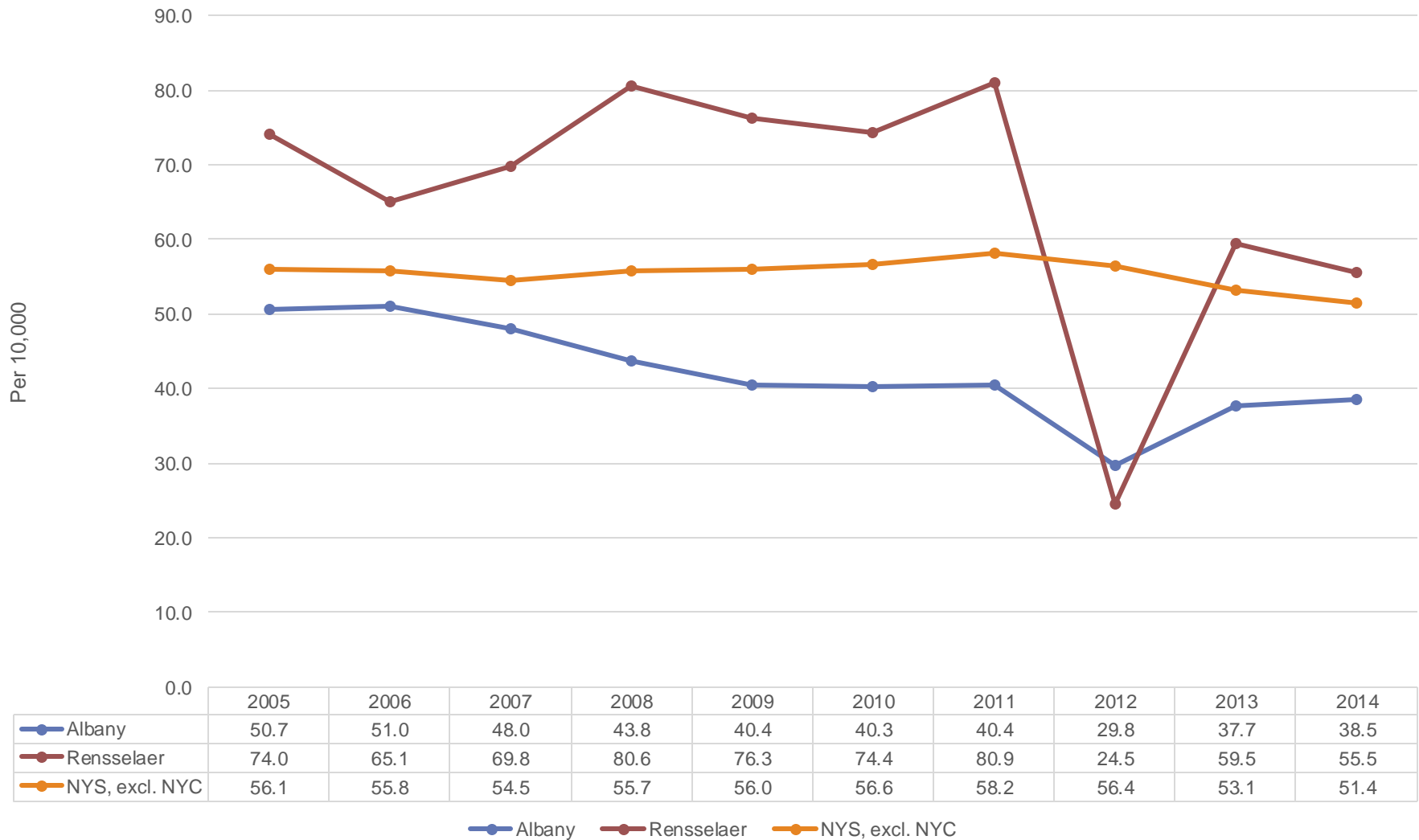
Age-adjusted Mental Diseases and Disorders ED Visit Rate per 10,000, Albany, Rensselaer and NYS excl. NYC, 2005-2014



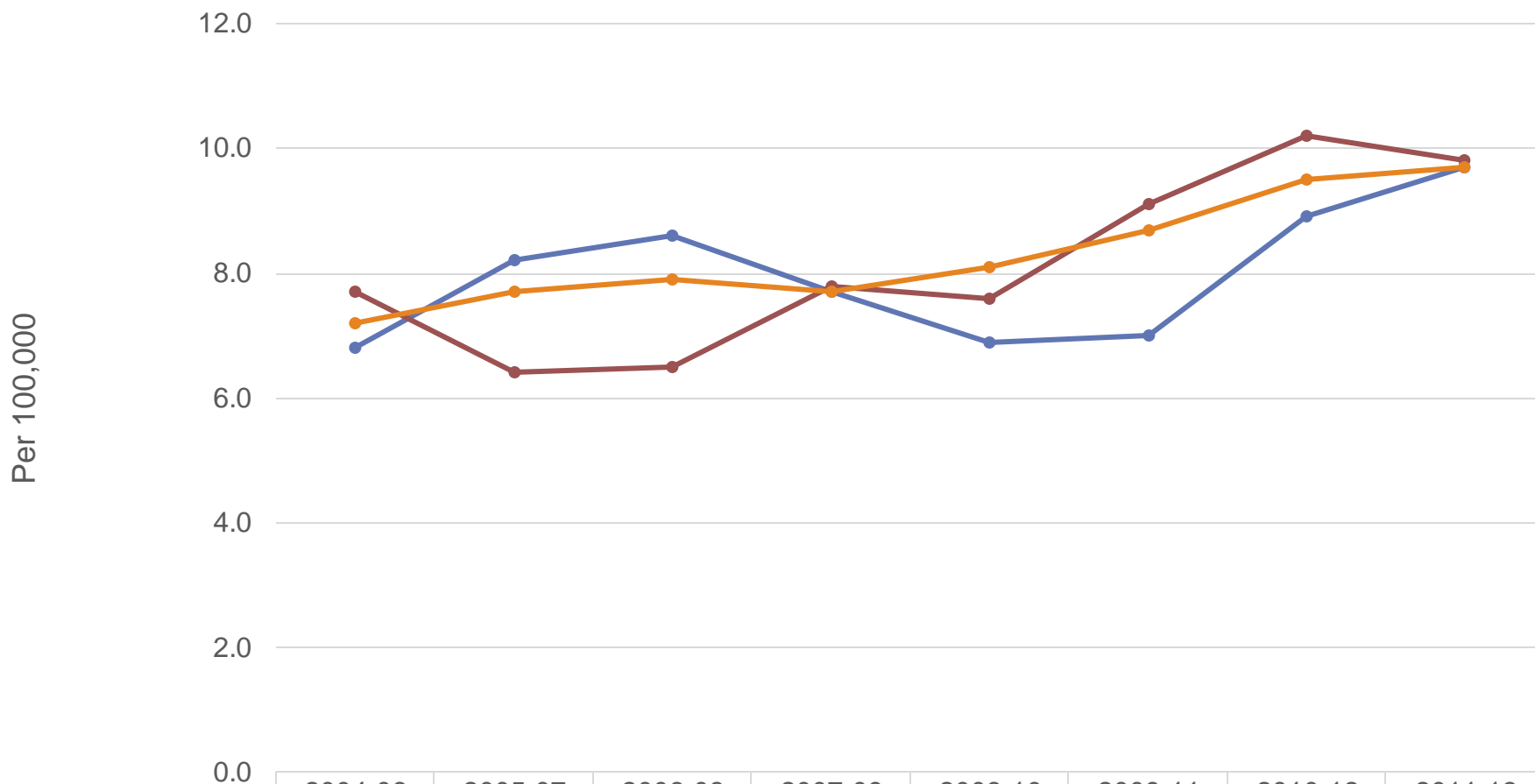
Per 10,000

Albany Rensselaer NYS, excl. NYC

Age-adjusted Mental Diseases and Disorders Hospitalization Rate per 10,000, Albany, Rensselaer, and NYS excl. NYC, 2005-2014

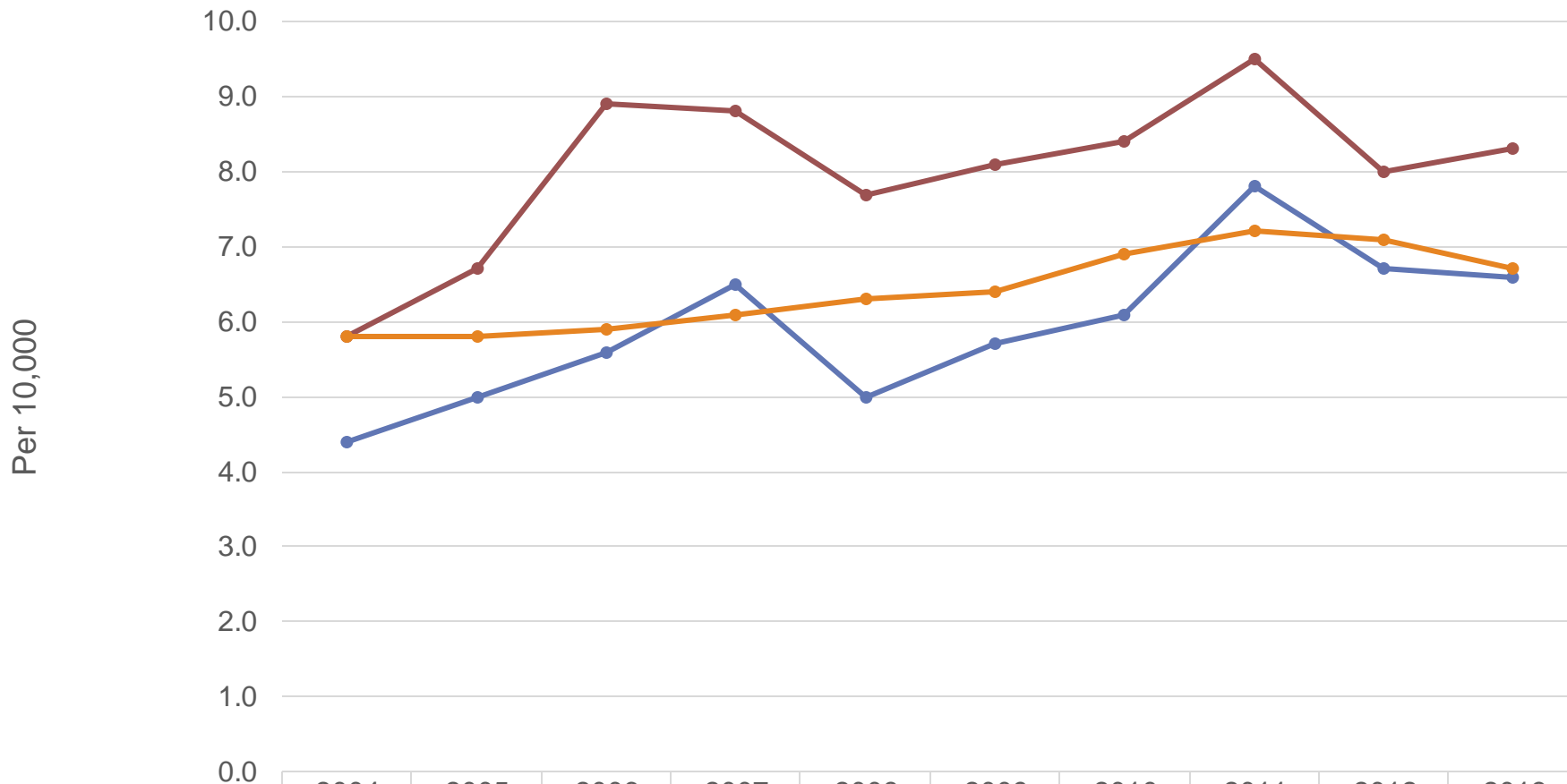


Age-adjusted Suicide Mortality Rate per 100,000, Albany, Rensselaer and NYS excl. NYC, 2004-06 to 2011-13



	2004-06	2005-07	2006-08	2007-09	2008-10	2009-11	2010-12	2011-13
Albany	6.8	8.2	8.6	7.7	6.9	7.0	8.9	9.7
Rensselaer	7.7	6.4	6.5	7.8	7.6	9.1	10.2	9.8
NYS, excl. NYC	7.2	7.7	7.9	7.7	8.1	8.7	9.5	9.7

Age-adjusted Self-Inflicted Injury Hospitalization Rate per 10,000, Albany, Rensselaer and NYS excl. NYC, 2004-2013



	2004	2005	2006	2007	2008	2009	2010	2011	2012	2013
Albany	4.4	5.0	5.6	6.5	5.0	5.7	6.1	7.8	6.7	6.6
Rensselaer	5.8	6.7	8.9	8.8	7.7	8.1	8.4	9.5	8.0	8.3
NYS, excl. NYC	5.8	5.8	5.9	6.1	6.3	6.4	6.9	7.2	7.1	6.7

EQUITY

Age-adjusted % Adults with Poor Mental Health for 14+ Days in Last Month, 2013-14

<u>% Poor MH Days</u>	Albany	Rensselaer	Capital Region	Upstate
Male	10.3	18.5	12.7	10.4
Female	15.8	14.3	13.5	12.1

Age-adjusted Mental Diseases and Disorders Rates per 10,000 by Gender, 2011-2013

<u>Hospitalizations</u>	Albany	Rensselaer	Capital Region	Upstate
Male	37.1	55.6	53.9	56.1
Female	34.7	54.4	53.6	55.6

<u>ED Visits</u>	Albany	Rensselaer	Capital Region	Upstate
Male	135.2	88.7	133.7	133.5
Female	90.5	81.5	114.1	121.9

Age-adjusted Mental Diseases and Disorders Rates per 10,000 by Race/Ethnicity, 2011-2013

<u>Hospitalizations</u>	Albany	Rensselaer	Capital Region
White non-Hispanic	32.0	52.7	50.4
Black non-Hispanic	59.5	87.2	89.4
Hispanic	27.6	50.1	43.2

<u>ED Visits</u>	Albany	Rensselaer	Capital Region
White non-Hispanic	98.0	82.7	116.3
Black non-Hispanic	206.6	130.7	210.4
Hispanic	86.1	60.6	95.2

Age-adjusted Self-inflicted Injury Rates per 10,000 (ages 15+) by Gender, 2011-2013

<u>Hospitalizations</u>	Albany	Rensselaer	Capital Region	Upstate
Male	7.1	7.8	8.1	7.0
Female	9.9	9.7	12.0	10.1

<u>ED Visits</u>	Albany	Rensselaer	Capital Region	Upstate
Male	9.4	5.0	8.6	7.3
Female	16.3	7.4	12.9	9.7

Mental Health Indicators by Age, 2011-2013

<u>Suicide</u>	Albany	Rensselaer	Capital Region	Upstate
Adjusted suicide mortality/100,000	9.7	9.8	9.6	8.0
Suicide mortality ages 15-19/100,000	1.4*	2.9*	5.4*	6.3

<u>Self-inflicted injury</u>	Albany	Rensselaer	Capital Region	Upstate
Adjusted self-inflicted injury hospitalization/10,000	7.0	8.6	8.5	7.0
Self-inflicted injury hospitalization ages 15-19/10,000	10.6	12.2	15.1	12.5

* Fewer than 10 events in the numerator, therefore the rate is unstable

Top Neighborhood Rates

Mental Diseases and Disorders

ED Visits*

- Albany County (112.8)
 - West Hills/South End- 452.3
 - West End- 310.1
 - Center Square- 253.9
- Rensselaer County (85.1)
 - Troy/Lansingburgh- 271.5
 - Rensselaer- 153.6
 - W. Sand Lake/Wynant.- 137.4
- Upstate- 127.7

Hospitalizations*

- Albany County (35.9)
 - West Hills/South End- 90.3
 - Center Square- 82.9
 - Colonie/Schenectady- 82.1
- Rensselaer County (55.0)
 - Troy/Lansing- 116.1
 - North East- 48.9
 - Rensselaer- 47.0
- Upstate- 55.8

*per 10,000 population

Top Neighborhood Rates

Self-inflicted Injury (ages 15+)

ED Visits*

- Albany County (12.8)
 - Rt. 20/New Scot.- 47.3
 - Center Square- 23.8
 - Cohoes.- 22.8
- Rensselaer County (6.1)
 - Troy/Lansingburgh- 15.8
 - W. Sand Lake/Wynan.- 12.3
 - Rensselaer- 11.7
- Upstate- 8.5

Hospitalizations*

- Albany County (8.5)
 - West Hills/South End- 17.1
 - West End- 15.9
 - Rt. 20/New Scot.- 14.7
- Rensselaer County (8.8)
 - Troy/Lansing- 14.9
 - Rensselaer- 10.5
 - South West- 9.2
- Upstate- 8.6

*per 10,000 population

Mental Health Summary

- The counties had a **higher** % of adults with poor mental health compared to ROS; **Rensselaer** fell into the **4th** risk quartile and **Albany** the **3rd** risk quartile;
- The % of adults with poor mental health days **increased** in both counties between 2008-09 and 2013-14;
- An estimated 19% of both county's adult population had a mental illness; 4% had a serious mental illness;

Mental Health Summary

- Albany and Rensselaer had lower mental disease/disorder ED visit and hospitalization rates compared to ROS;
- Both counties had increasing mental disease/disorder ED visit rates from 2005 to 2011 with a sharp decrease in 2012;
- Albany showed a decreasing trend in mental disease/disorder hospitalization rates while Rensselaer rates were increasing until 2011 with a decrease in 2012;
- Males had slightly higher mental disease/disorder ED visit and hospitalization rates compared to females;
- **BNH's** have **2 times** the ED visit and hospitalization rate compared to the WNH population;
- High risk neighborhoods were **2.0-3.5 times** higher for mental disease/disorder ED visit rates and **1.5-2.0 times** higher hospitalization rates than ROS.

Mental Health Summary

- Both counties had similar suicide mortality rates compared to ROS;
- Both counties had **increasing trend** in suicide mortality;
- **Albany** had **higher** self-inflicted injury **ED** visit rates, and Rensselaer lower rates compared to ROS;
- **Rensselaer** had **higher** self-inflicted injury **hospitalization** rates compared to ROS and fell into the **3rd** quartile of risk;
- Albany and Rensselaer had increasing rates of self-inflicted injury hospitalizations since 2008 with a drop in 2012;
- High risk neighborhoods were **1.5-5.5 times** higher for self-inflicted injury ED and hospitalization rates than ROS.

SUBSTANCE ABUSE IN THE ALBANY-RENSSELAER

Substance Abuse Summary

Albany and Rensselaer are estimated to have:

- 12,200 individuals 12+ years of age with “Drug Dependence and Abuse”;
- 10,800 individuals 12+ years of age “Needing/Not Receiving Drug Treatment”.

The Effect of Substance Abuse on the Population-NSDUH, Estimated Prevalence, Population 12+ Years of Age, 2012

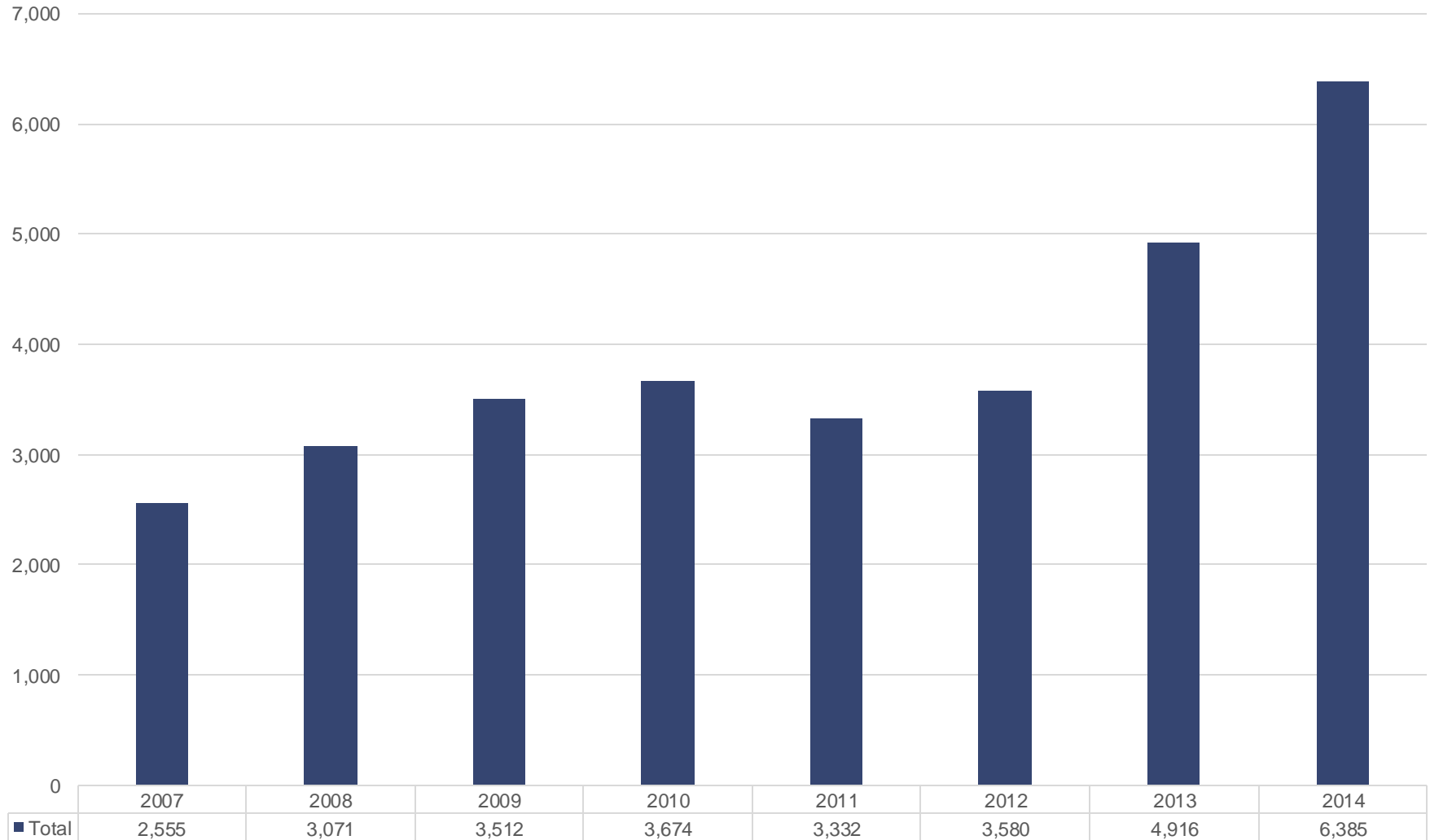
	Albany	Rensselaer	Capital Region	New York State
Drug Dependence and Abuse	3%	3%	3%	3%
Needing/Not Receiving Drug Treatment	3%	2%	2%	3%

Substance Abuse Summary

Albany and Rensselaer annually have:

- 17,134 Substance Abuse (any diagnosis) ED visits;
- 8,722 Substance Abuse (any diagnosis) hospitalizations;
- 1,000 Drug-related hospitalizations;
- 470 Opiate ED visits;
- 166 Opiate hospitalizations;
- 41 Newborn drug-related hospitalizations;
- 24 Substance Abuse deaths.

Clients Receiving Heroin Dependency Treatment at OASAS Certified Chemical Dependency Treatment Programs, Capital Region (6 Counties), 2007-2014



Finger Lakes HSA SPARCS and V.S. Portal Codes

- **Substance Abuse-Any diag. (ICD 9)**

291.0-291.9 - Alcohol induced mental disorders;
292.0-292.9 - Drug induced mental disorders;
303.0-303.9 - Alcohol dependence syndrome;
304.0-304.9 - Drug dependence syndrome;
305.0-305.9 – Nondependent abuse of drugs.

- **Substance Abuse Mortality (ICD 10)**

X 40-X 44 – Accidental Poisonings by Exposure to Noxious Substances

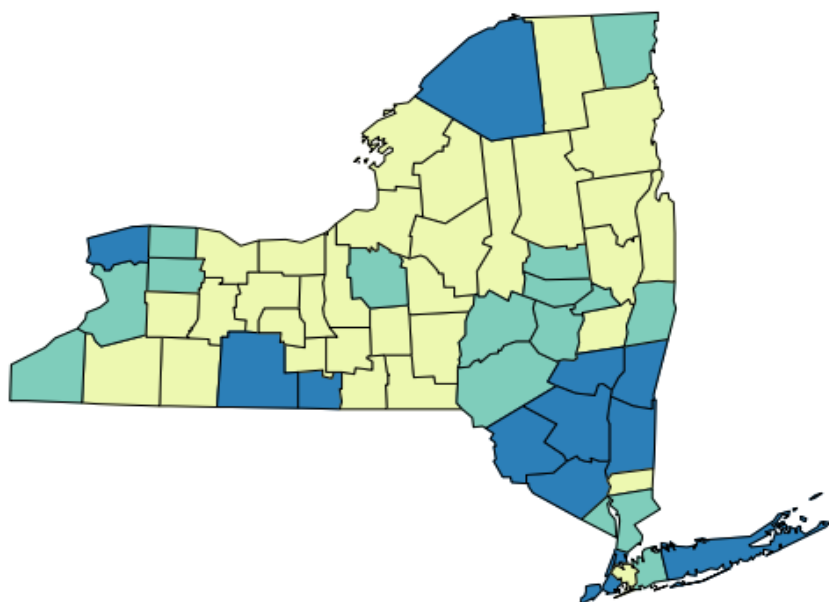
- **Substance Abuse-Opiates (ICD 9)**

304.0 – Opioid type dependence;
304.7 – Combinations of opioid type drug with any drug dependence;
965.0-965.2 – Opiate poisonings;
E850.0-E850.2 – Accidental opiate poisonings.

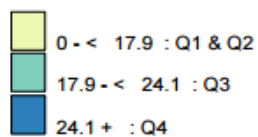
Substance Abuse Indicators and Significance Compared to New York State (excl. NYC), 2011-2013

	Albany		Rensselaer		Capital Region		Upstate
Adjusted drug-related hospitalizations /10,000	17.5	Lower	19.0	Lower	18.0	Lower	21.1
Newborn drug-related hospitalization rate /10,000 newborn discharges	95.2	Lower	113.4	Lower	116.7	Lower	123.4
Adjusted substance abuse (any diagnosis) ED visit rate /10,000	291.9	Lower	198.1	Lower	359.4	Higher	302.4
Adjusted substance abuse (any diagnosis) hospitalization rate /10,000	178.2	Higher	192.3	Higher	182.9	Higher	176.1
Adjusted substance abuse mortality rate /100,000 (2013)	4.9	Lower	4.8	Lower	4.6	Lower	10.6
Adjusted opiate ED visit rate /10,000	8.0	Higher	6.5	Slightly lower	7.1	Higher	6.8
Adjusted opiate hospitalization rate /10,000	6.5	Similar	6.1	Slightly lower	6.0	Lower	6.6

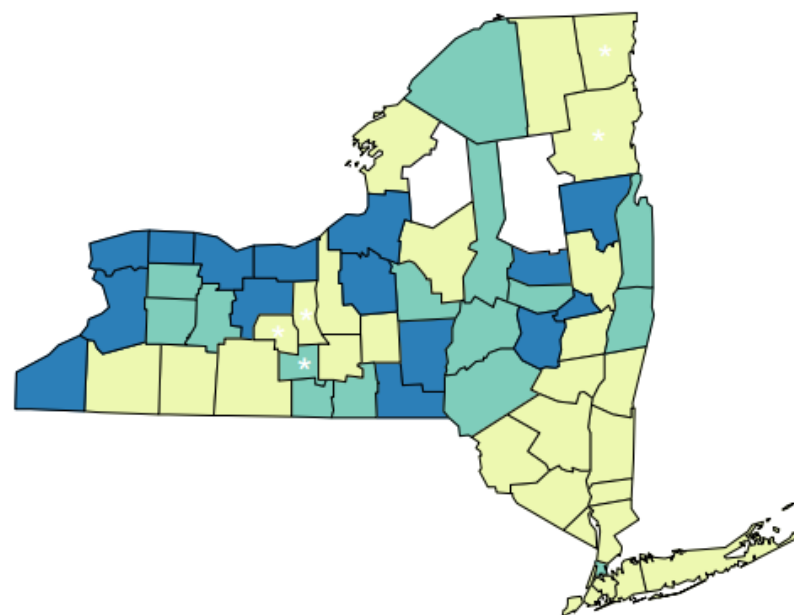
Age-adjusted Drug Hospitalization Rate per 10,000, 2011-2013



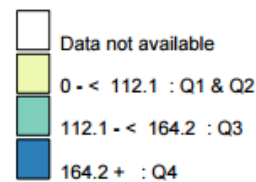
Hospital Discharge Rate
Counties Are Shaded Based On Quartile Distribution



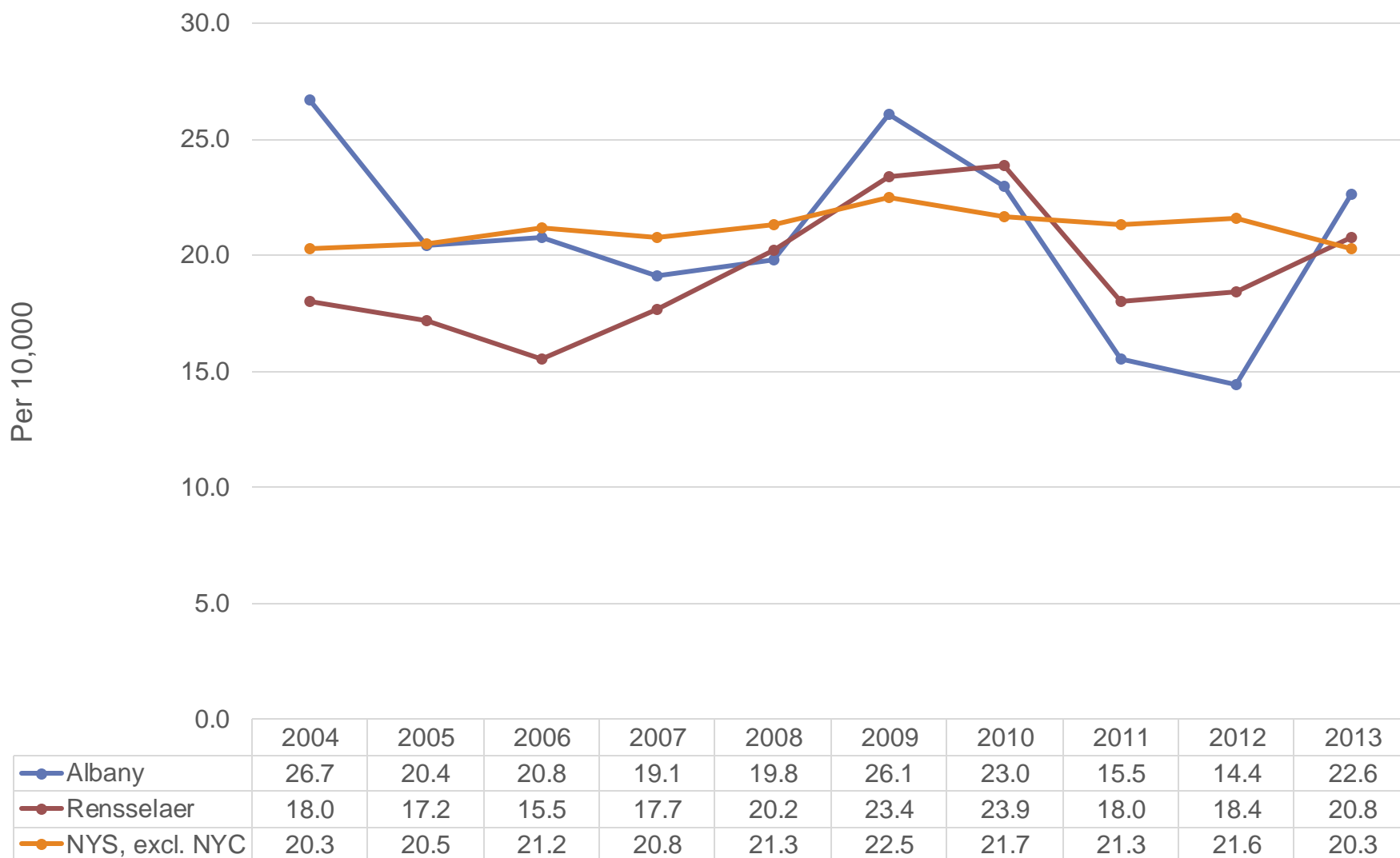
Newborn Drug-Related Discharge Rate per 10,000 Newborn Discharges 2011-2013



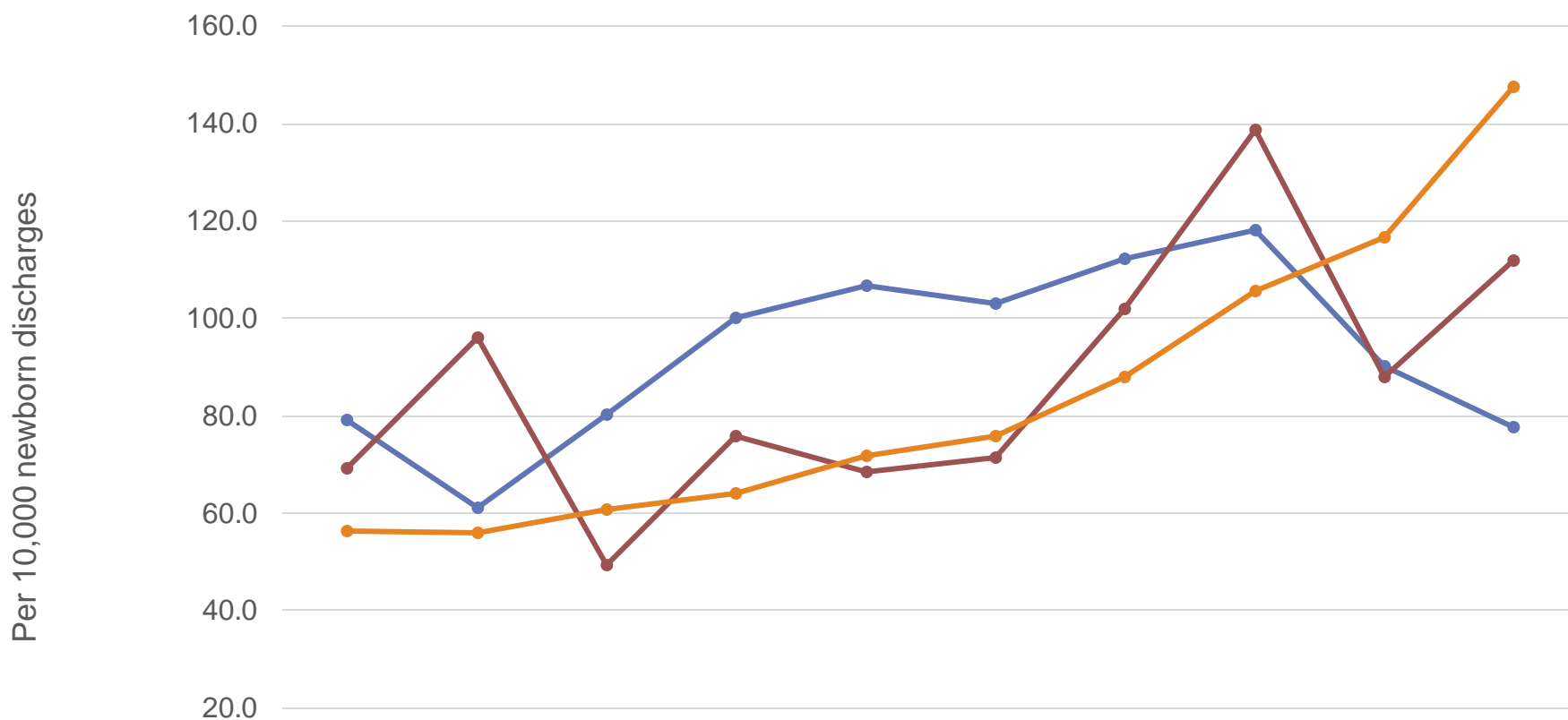
Drug-related Diagnosis Rate
Counties Are Shaded Based On Quartile Distribution
(* Fewer than 10 events in the numerator, therefore the rate is unstable)



Age-adjusted Drug-Related Hospitalization Rate per 10,000, Albany, Rensselaer and NYS excl. NYC, 2004-2013

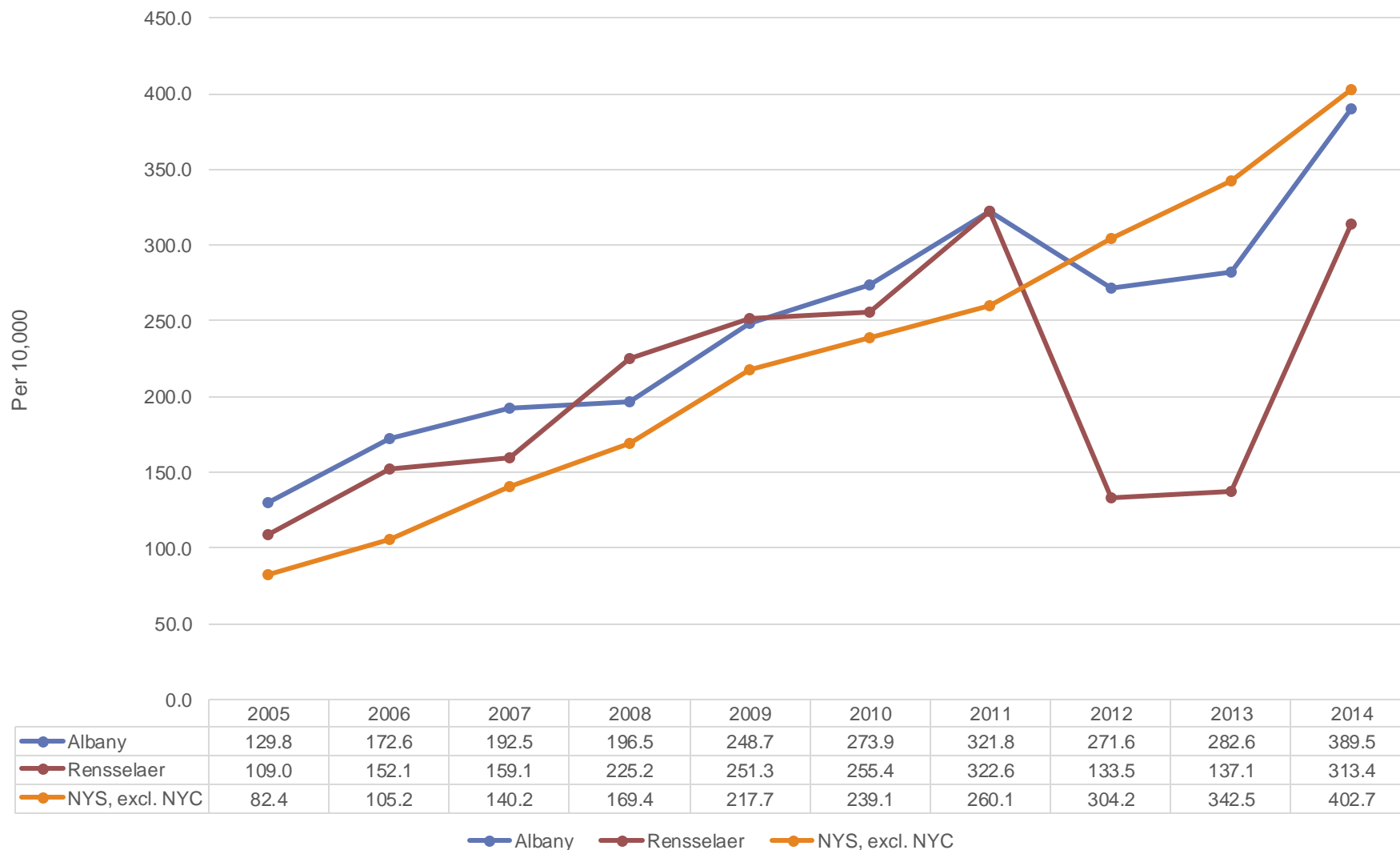


Newborn Drug-Related Discharge Rate per 10,000 Newborn Discharges, Albany, Rensselaer and NYS excl. NYC, 2004-2013

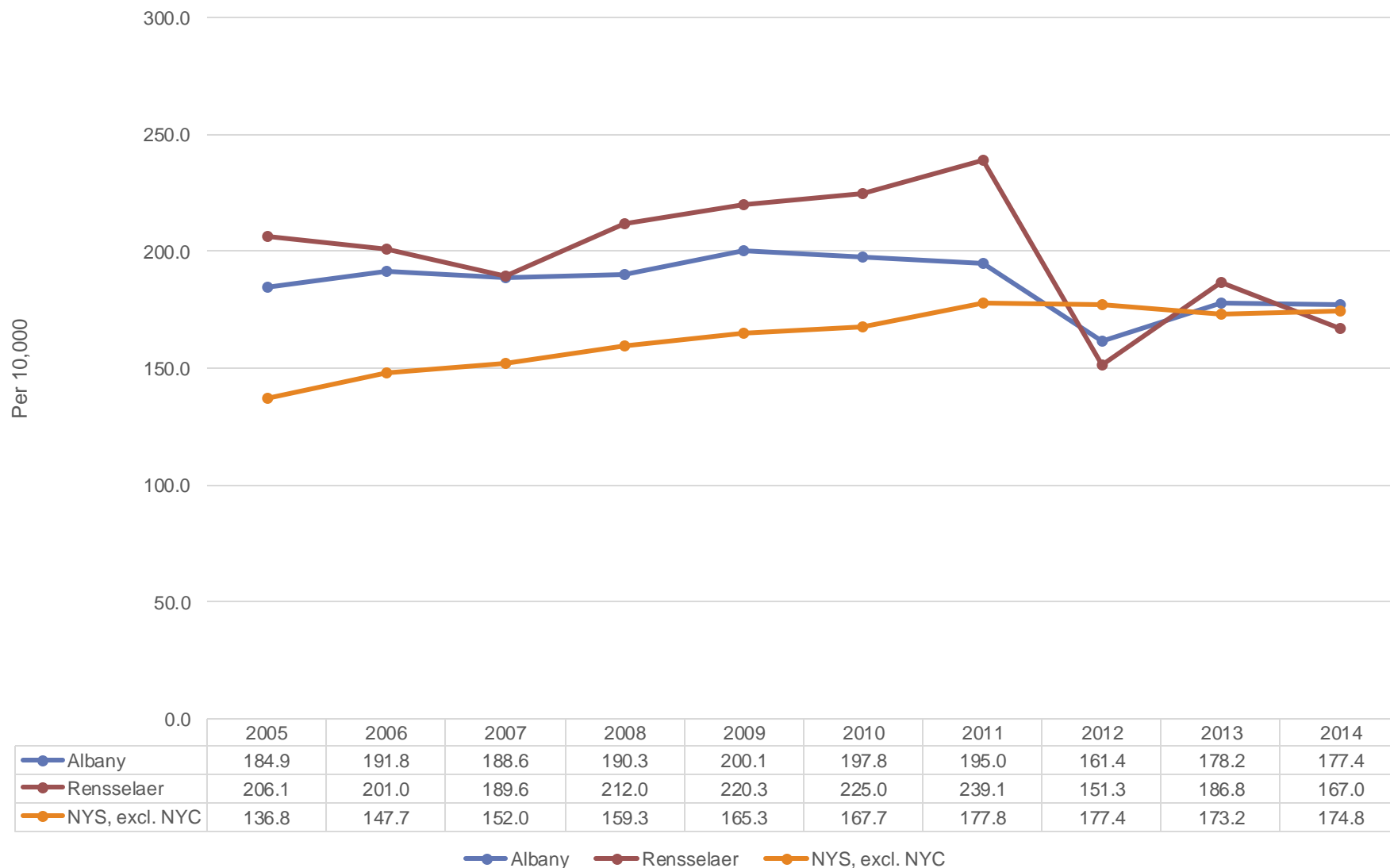


	2004	2005	2006	2007	2008	2009	2010	2011	2012	2013
Albany	79.1	61.2	80.2	100.1	106.6	102.9	112.2	118.0	90.0	77.6
Rensselaer	69.2	96.1	49.5	75.8	68.4	71.6	101.9	138.7	87.9	111.9
NYS, excl. NYC	56.3	56.1	60.6	64.1	71.9	75.9	87.8	105.8	116.7	147.7

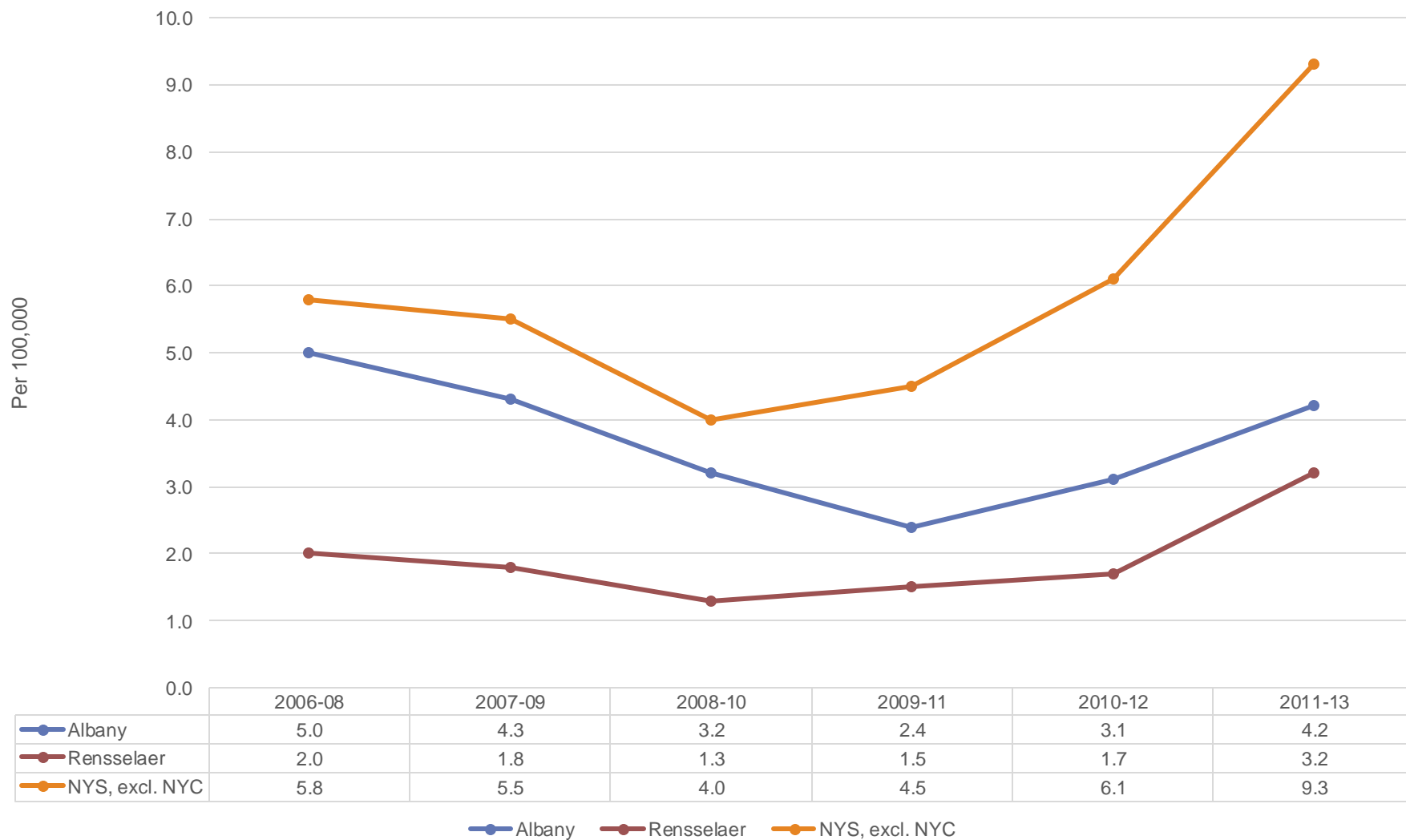
Age-adjusted Substance Abuse (any diagnosis) ED Visit Rate per 10,000, Albany, Rensselaer and NYS excl. NYC, 2005-2014



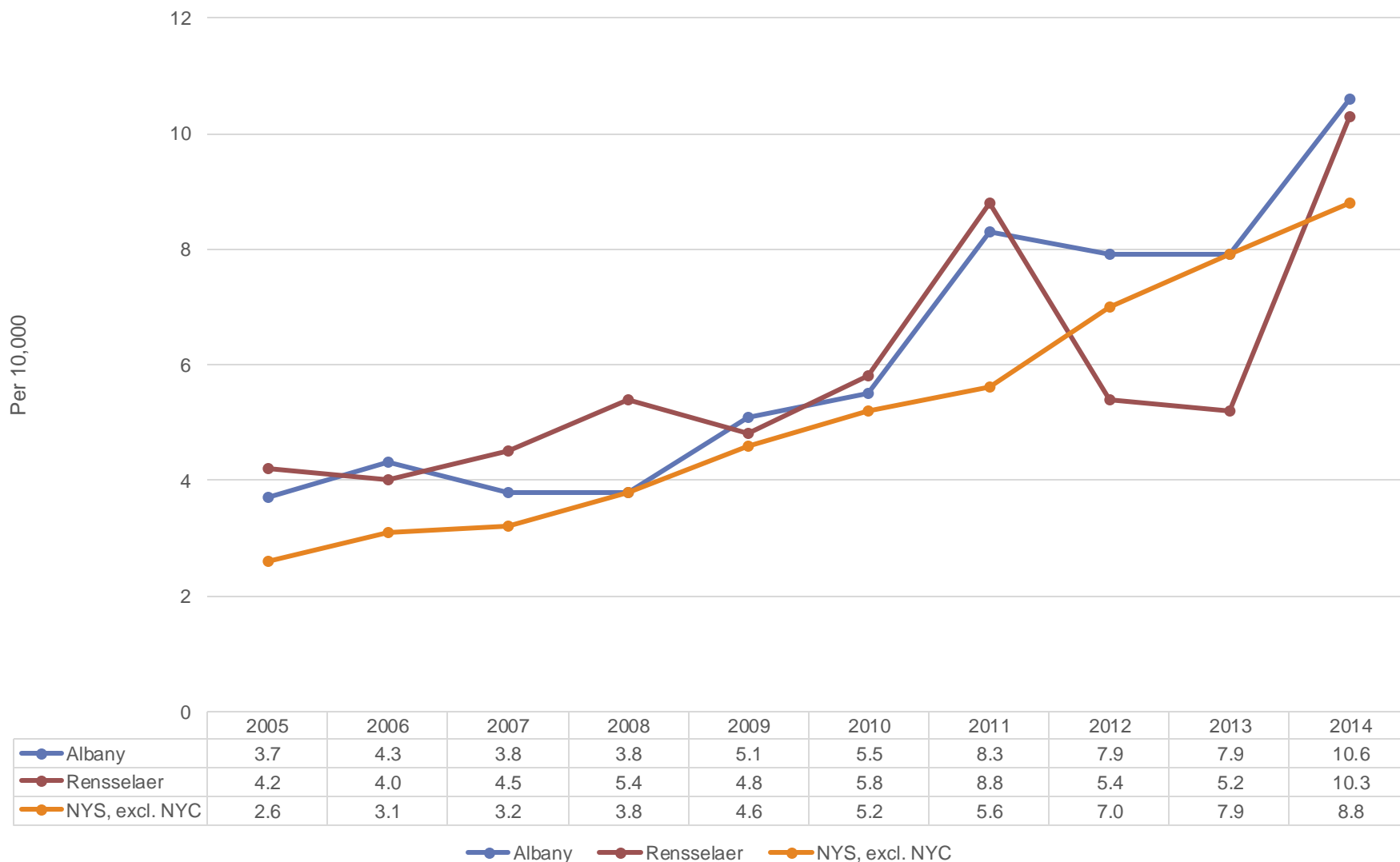
Age-adjusted Substance Abuse (any diagnosis) Hospitalization Rate per 10,000, Albany, Rensselaer, and NYS excl. NYC, 2005-2014



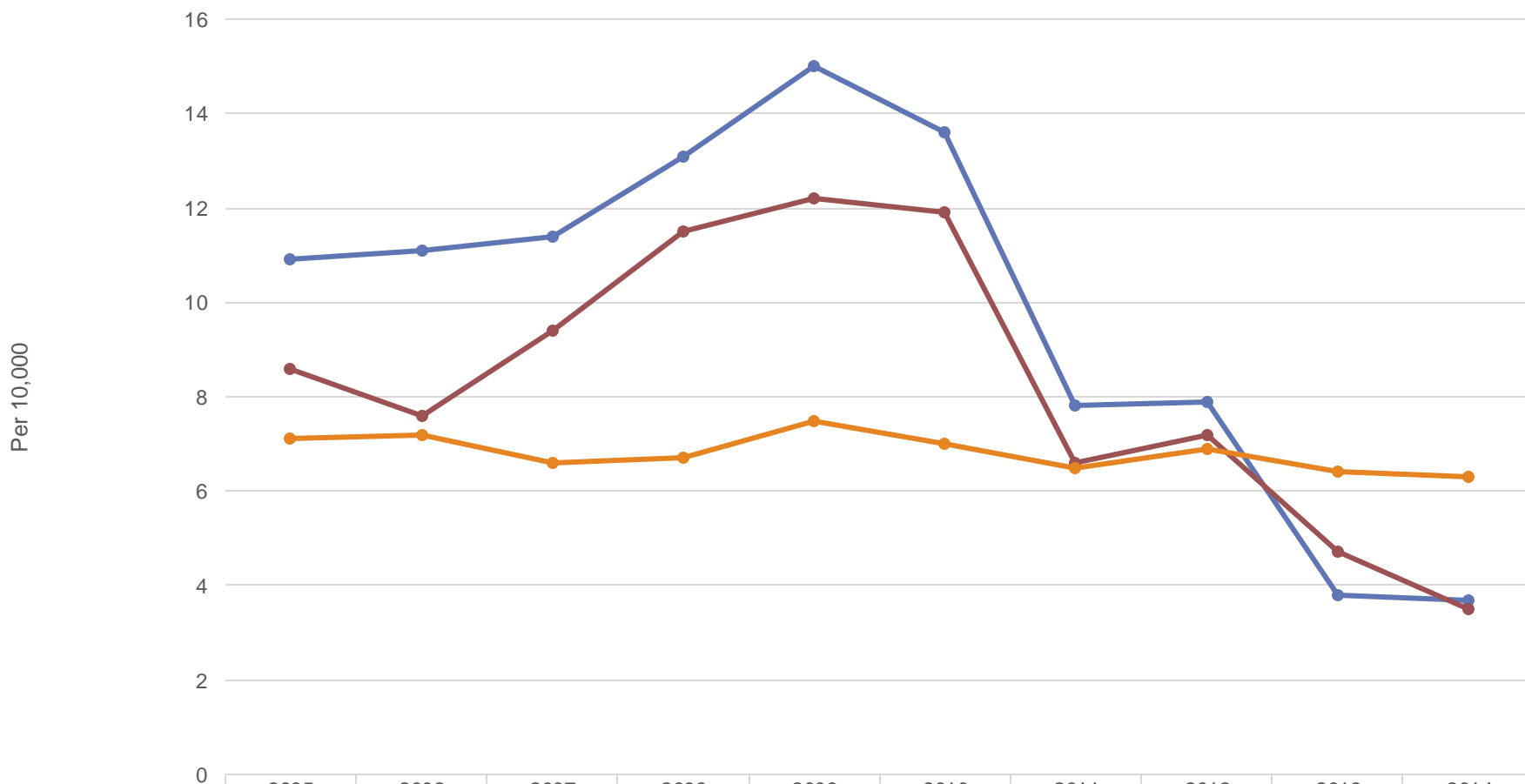
Age-adjusted Substance Abuse Mortality Rate per 100,000, Albany, Rensselaer and NYS excl. NYC, 2006-08 to 2011-13



Age-adjusted Opioid ED Visit Rate per 10,000, Albany, Rensselaer, and NYS excl. NYC, 2005-2014



Age-adjusted Opioid Hospitalization Rate per 10,000, Albany, Rensselaer and NYS excl. NYC, 2005-2014



Per 10,000

Albany Rensselaer NYS, excl. NYC

EQUITY

Age-adjusted Substance Abuse Mortality Rates per 100,000 by Gender, 2009-2013

<u>Mortality</u>	Albany	Rensselaer	Capital Region	Upstate
Male	4.6	3.9	4.3	9.2
Female	2.0	1.1	1.8	3.8

Age-adjusted Substance Abuse (any diagnosis) Rates per 10,000 by Gender, 2011-2013

<u>Hospitalizations</u>	Albany	Rensselaer	Capital Region
Male	207.7	221.7	208.5
Female	150.7	165.5	158.8

<u>ED Visits</u>	Albany	Rensselaer	Capital Region
Male	327.7	200.7	372.2
Female	258.0	197.0	347.7

Age-adjusted Opiate Rates per 10,000 by Gender, 2011-2013

<u>Hospitalizations</u>	Albany	Rensselaer	Capital Region
Male	7.9	7.5	7.2
Female	5.2	4.9	4.8

<u>ED Visits</u>	Albany	Rensselaer	Capital Region
Male	9.8	8.4	8.9
Female	6.4	4.5	5.3

Adjusted Drug-related Hospitalization Rate per 10,000 by Race/Ethnicity, 2011-2013

	Albany	Rensselaer	Upstate
White non-Hispanic	16.6	18.7	20.8
Black non-Hispanic	23.5	25.6	27.6
Hispanic	9.3	14.4	13.7

Age-adjusted Opiate Rates per 10,000 by Race/Ethnicity, 2011-2013

<u>Hospitalizations</u>	Albany	Rensselaer	Capital Region
White non-Hispanic	6.6	6.4	6.1
Black non-Hispanic	6.2	4.9	5.3
Hispanic	3.3	3.3	2.2
Other	15.0	14.9	12.6

<u>ED Visits</u>	Albany	Rensselaer	Capital Region
White non-Hispanic	8.4	7.0	7.5
Black non-Hispanic	6.4	1.5	5.7
Hispanic	4.1	1.7	3.2
Other	15.3	18.6	12.6

Top Neighborhood Rates

Substance Abuse (any diagnosis)

ED Visits*

- Albany County (291.9)
 - West Hills/South End- 1,341.8
 - West End- 975.1
 - Colonie/Schen.- 900.6
- Rensselaer County (198.1)
 - Troy/Lansingburgh- 608.7
 - Rensselaer- 294.0
 - North West- 235.5
- Upstate- 302.4

Hospitalizations*

- Albany County (178.2)
 - West Hills/South End- 621.5
 - West End- 455.2
 - Center Square- 359.9
- Rensselaer County (192.3)
 - Troy/Lansing- 355.0
 - Rensselaer- 194.8
 - South West- 170.2
- Upstate- 176.1

*per 10,000 population

Top Neighborhood Rates

Substance Abuse Mortality per 100,000 (2009-2013)

- Albany County (3.3)
 - Cohoes- 8.9
 - West Hills/South End- 8.8
 - Colonie/Schen.- 7.1
- Rensselaer County (2.5)
 - W. Sand Lake/Wynant.- 7.4
 - South West- 4.9
 - Troy/Lansingburgh- 2.5
- Upstate- 6.5

Top Neighborhood Rates

Opiates (2009-2013)

ED Visits*

- Albany County (6.9)
 - West Hills/South End- 22.3
 - West End- 17.3
 - Center Square- 12.6
- Rensselaer County (6.0)
 - W. Sand Lake/Wynant. – 11.2
 - Rensselaer- 11.1
 - South West- 10.2
- Upstate- 6.1

Hospitalizations*

- Albany County (9.7)
 - West Hills/South End- 32.6
 - West End- 23.3
 - Rt. 20/New Scot.- 16.0
- Rensselaer County (8.5)
 - North West- 13.5
 - South West- 12.4
 - Rensselaer- 12.0
- Upstate- 6.9

*per 10,000 population

Substance Abuse Summary

- Both counties have lower substance abuse ED visit rates, but **higher hospitalization rates** compared to ROS;
- Albany and Rensselaer had lower drug-related, and newborn drug-related hospitalization rates compared to ROS. However, **Rensselaer** fell into the **3rd Risk Quartile** compared to all NYS counties;
- Both counties had increasing trends for substance abuse ED visit rates until a drop in 2012; rates then increases between 2012 and 2014;
- Rensselaer showed an increasing trend in substance abuse hospitalizations while Albany's trend was stable; both showed the 2012 decrease in rates and an increase in 2013;
- Drug-related hospitalization rates increased during the early part of the last decade and then decreased from 2009 to 2012. Both counties showed an increase between 2012 and 2013;
- The counties had generally increasing trends in newborn drug-related hospitalization rates until 2011. Albany continued the decrease while Rensselaer increased from 2012 to 2013;

Substance Abuse Summary

- Substance abuse mortality trends for both counties **increased** from 2009-11 through 2011-13;
- Albany had **higher** opiate ED visits and similar opiate hospitalization rates than ROS; Rensselaer had slightly lower ED and hospitalization rates than ROS;
- Both counties showed a major increase in opiate ED rates between 2013 and 2014, but decreases in the opiate hospitalization rates;
- Males had **2.3 to 3.5** times higher substance abuse mortality, **1.0 to 1.3** times the substance abuse ED and hospitalization rates, and **1.5 to 1.9** times the opiate ED and hospitalization rates than females;
- **Black non-Hispanics** had about **1.5** times the drug-related hospitalization rates compared to their white non-Hispanic counterparts;
- High risk neighborhoods had **1.1 to 1.4** times the substance abuse mortality, **2 to 4.5** times the substance abuse ED visit and hospitalization rates, and **1.7 to 4.7** times the opiate ED and hospitalization than ROS;
- **Over 90% increase** in clients receiving Heroin Dependency Treatment at Capital Region OASAS certified treatment programs between 2011 to 2014.

ALCOHOL ABUSE IN ALBANY-RENSSELAER

The Effect of Alcohol Abuse on the Population-NSDUH, Estimated Prevalence, Population 12+ Years of Age, 2012

	Albany	Rensselaer	Capital Region	New York State
Alcohol Dependence and Abuse	8%	7%	7%	7%
Needing/Not Receiving Alcohol Treatment	8%	7%	7%	6%

Alcohol Abuse Summary

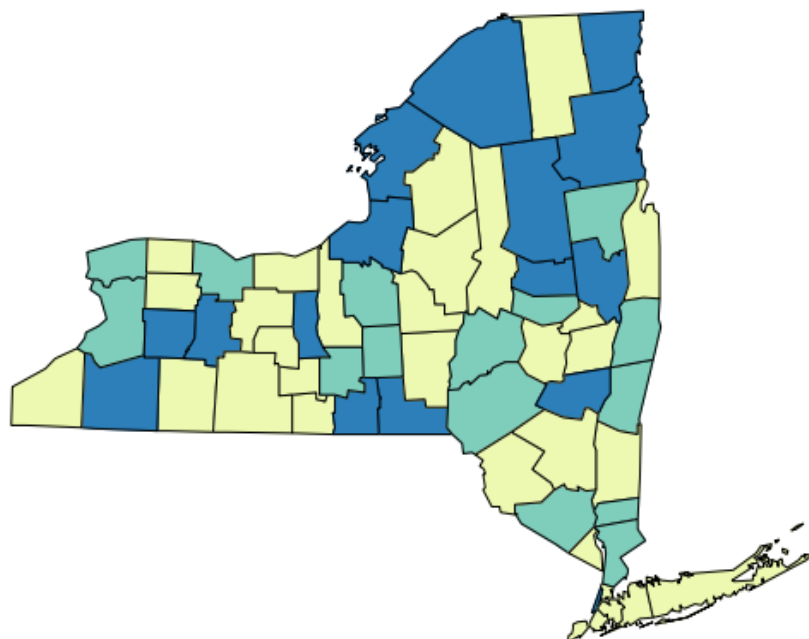
Albany and Rensselaer annually have:

- 52,900 binge drinkers;
- 31,100 individuals 12+ years estimated to have alcohol dependence or abuse;
- 31,000 individuals 12+years estimated needing/not receiving alcohol treatment;
- 191 alcohol-related motor vehicle injuries and deaths;
- 122 cirrhosis hospitalizations;
- 55 deaths due to cirrhosis.

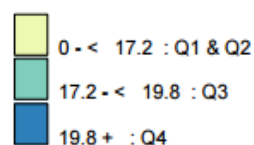
Substance Abuse Indicators and Significance Compared to New York State (excl. NYC)

	Albany		Rensselaer		Capital Region		Upstate
Age-adjusted percentage of adult binge drinking during the past month ^a	16.6	Lower	18.6	Higher	18.3	Higher	17.4
Alcohol related motor vehicle injuries and deaths/100,000 ^c	39.7	Sig. Lower	42.6	Lower	44.1	Similar	44.3
Adjusted cirrhosis hospitalization rate/10,000 ^c	2.4	Higher	2.4	Higher	2.2	Same	2.2
Adjusted cirrhosis mortality rate/100,000 ^c	9.2	Sig. Higher	9.9	Sig. Higher	8.8	Higher	7.2

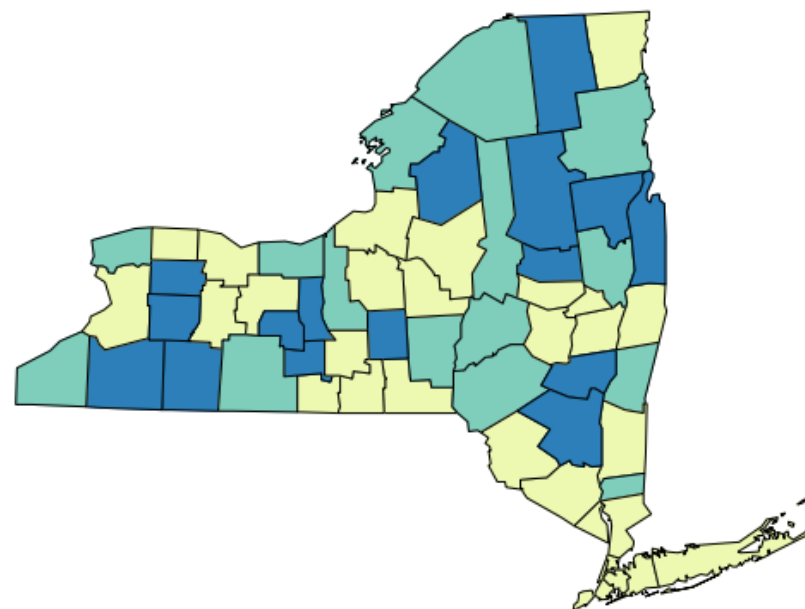
% of Adults who Binge Drink, 2013-14



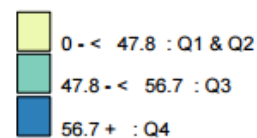
Age-adjusted percentage of adults
Counties Are Shaded Based On Quartile Distribution



Alcohol-related Motor Vehicle Injuries and Deaths per 100,000, 2011-2013

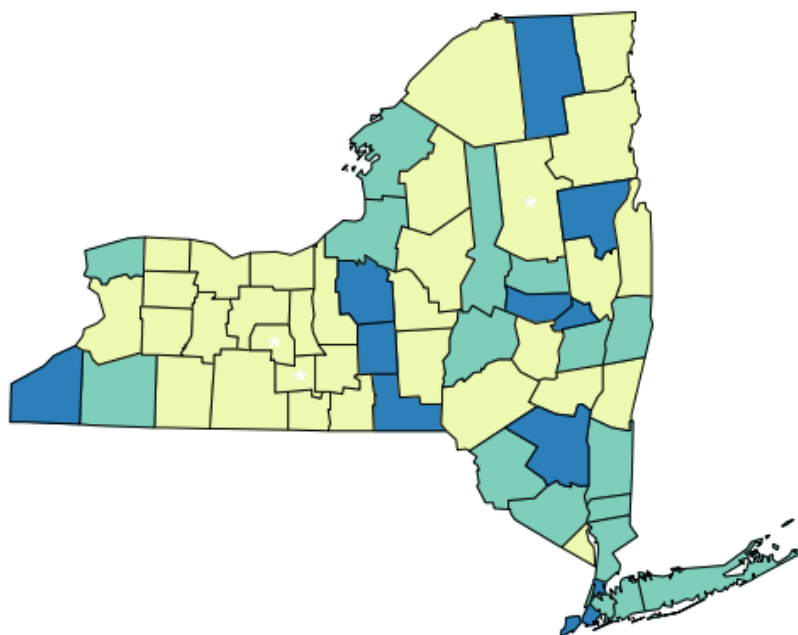


Rate
Counties Are Shaded Based On Quartile Distribution

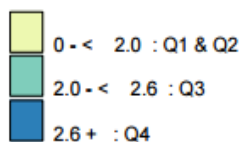


Source: 2011-2013 NYS Department of Motor Vehicles Data as of June, 2015

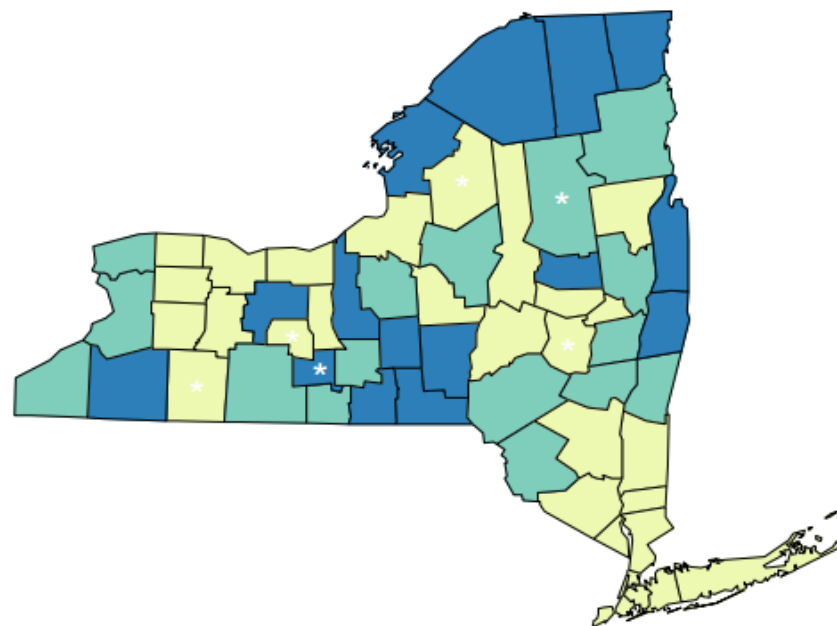
Age-adjusted Cirrhosis Hospitalization Rate per 10,000, 2011-2013



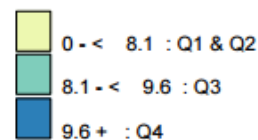
Hospital Discharge Rate
Counties Are Shaded Based On Quartile Distribution
(* Fewer than 10 events in the numerator, therefore the rate is unstable)



Age-adjusted Cirrhosis Mortality Rate per 100,000, 2011-2013



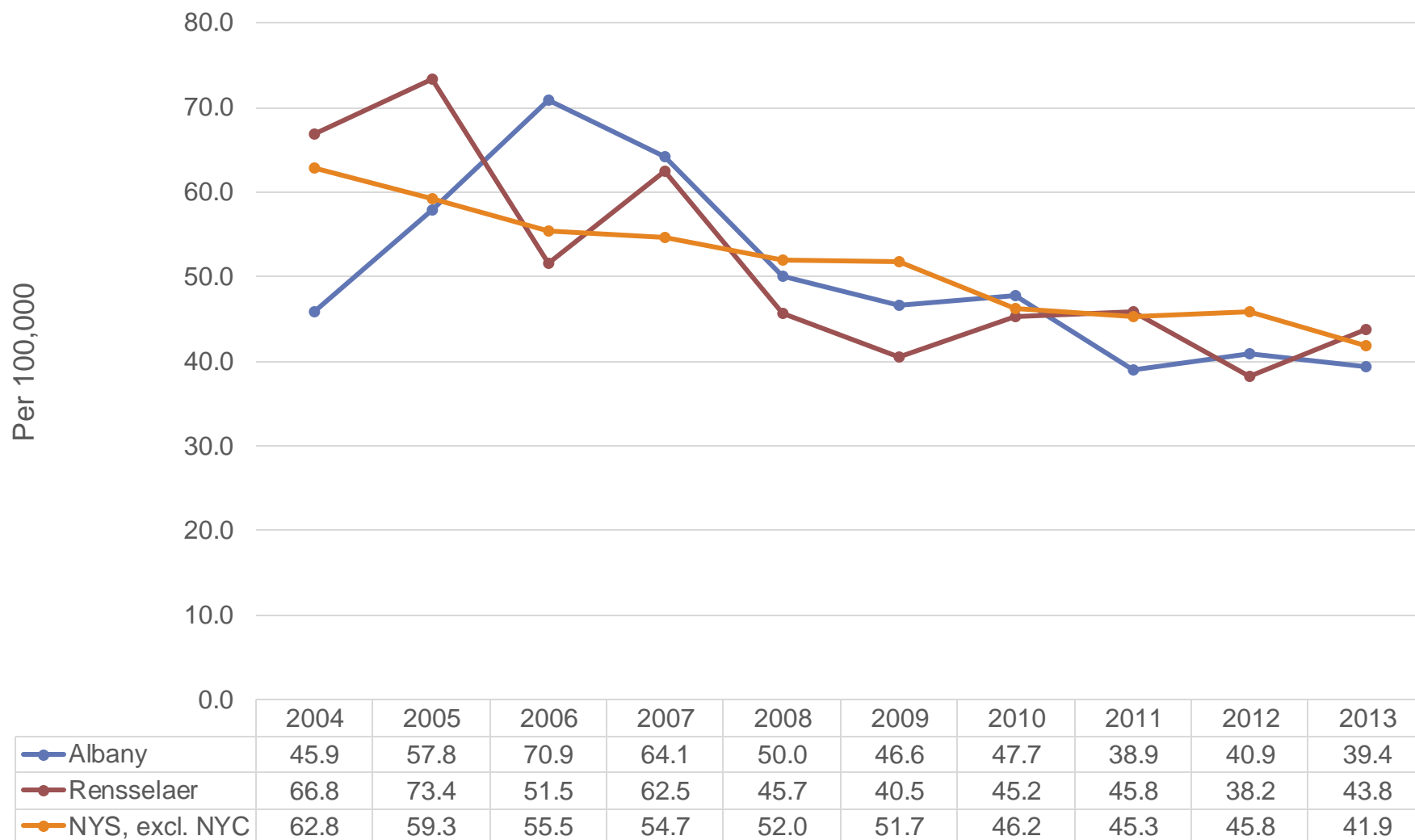
Death Rate
Counties Are Shaded Based On Quartile Distribution
(* Fewer than 10 events in the numerator, therefore the rate is unstable)



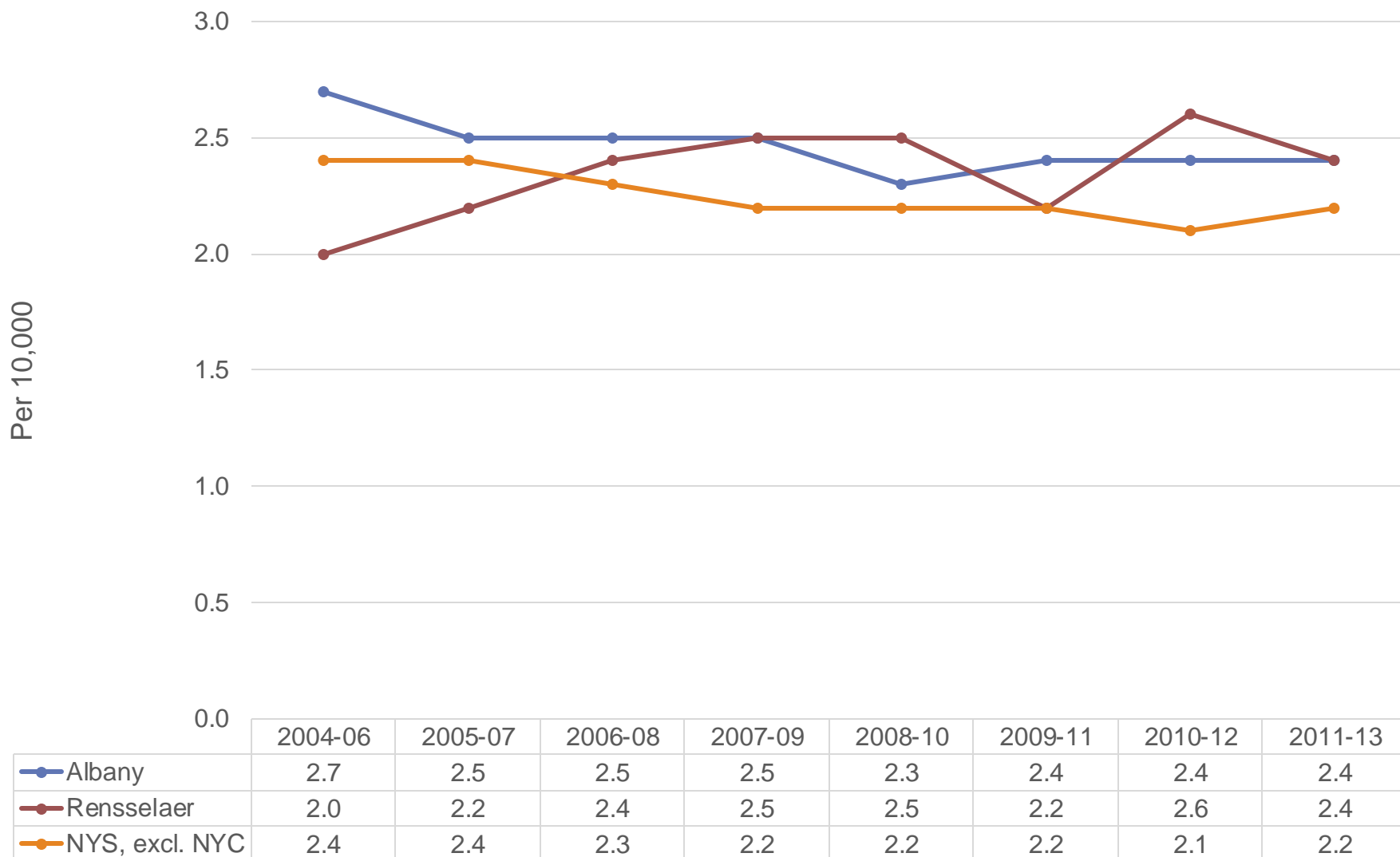
Adjusted Percentage of Adults who were Binge Drinkers for New York State (excl. NYC), Albany, Rensselaer and Capital Region; 2003, 2008-2009, 2013-14

	2003	2008-09	2013-14
Albany	14.5	15.8	16.6
Rensselaer	16.8	18.7	18.6
Capital Region	NA	NA	18.3
Upstate	15.2	19.8	17.4

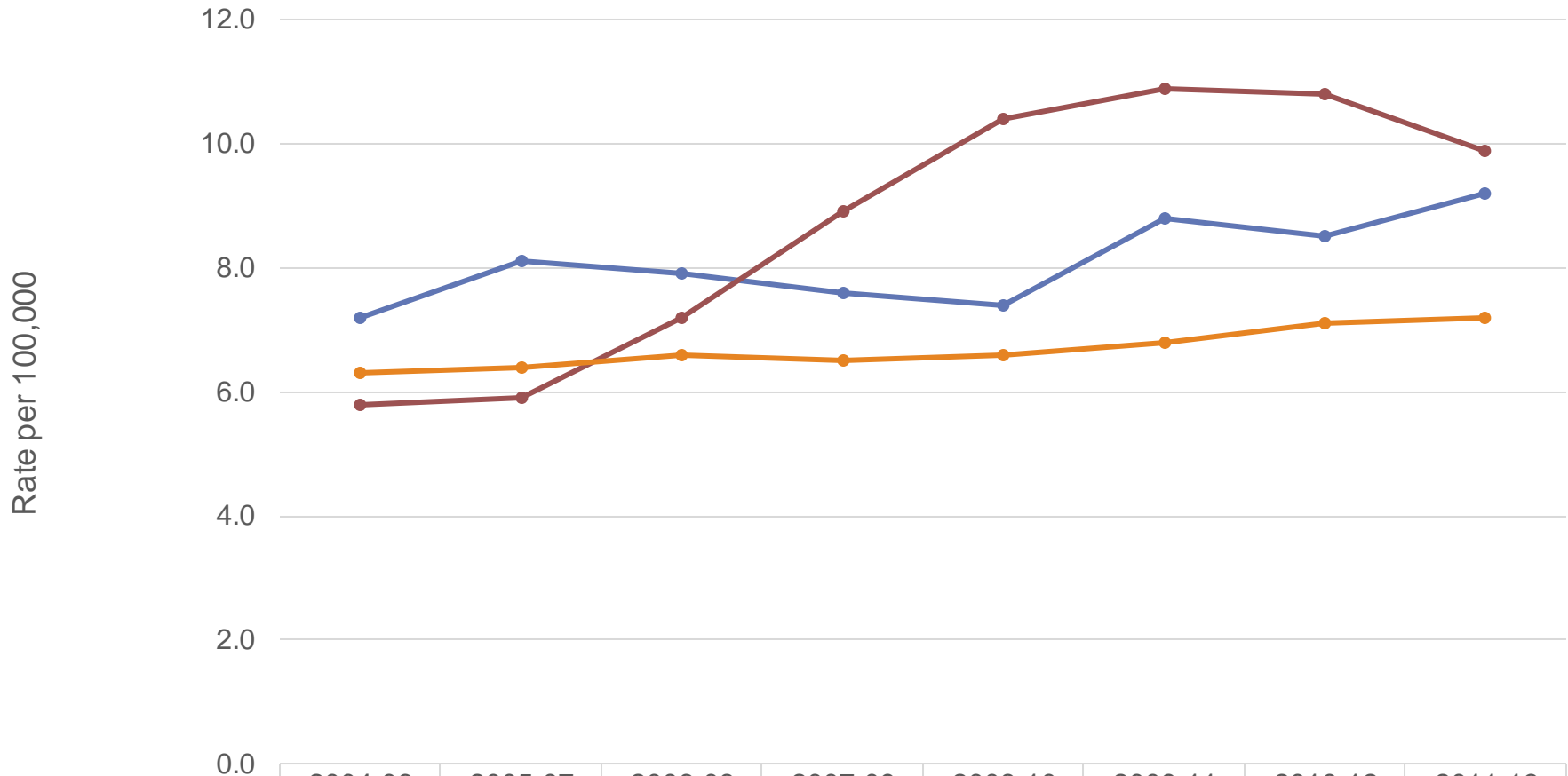
Alcohol-related Motor Vehicle Injury and Death Rate per 100,000, Albany, Rensselaer, and NYS excl. NYC, 2004-2013



Age-adjusted Cirrhosis Hospitalization Rate per 10,000, Albany, Rensselaer and NYS excl. NYC, 2004-06 to 2011-13



Age-adjusted Cirrhosis Mortality Rate per 100,000, Albany, Rensselaer and NYS excl. NYC, 2004-06- to 2011-13



	2004-06	2005-07	2006-08	2007-09	2008-10	2009-11	2010-12	2011-13
Albany	7.2	8.1	7.9	7.6	7.4	8.8	8.5	9.2
Rensselaer	5.8	5.9	7.2	8.9	10.4	10.9	10.8	9.9
NYS, excl. NYC	6.3	6.4	6.6	6.5	6.6	6.8	7.1	7.2

EQUITY

% Adults Binge Drinking in Past Month, 2013-14

<u>% Binge Drink</u>	Albany	Rensselaer	Capital Region	Upstate
Male	20.6	22.1	21.9	22.8
Female	13.0	12.0	12.9	11.4

Alcohol Abuse Summary

- Albany and Rensselaer had **significantly higher** cirrhosis mortality rates with **Rensselaer** falling in the **4th** risk quartile and **Albany** in the **3rd**, but only slightly higher hospitalization rates compared to ROS, **both** counties however falling in the **3rd** risk quartile;
- **Rensselaer** had **higher** adult binge drinking rates compared to ROS. Albany had a lower rate;
- **Males** were **1.6 times** more likely to binge drink than females;
- Albany and Rensselaer had lower alcohol-related motor vehicle injury and death rates compared to ROS;
- MV Injury and Death trends have been decreasing in the past decade for Albany and Rensselaer; Cirrhosis hospitalization trends are fairly stable; and **Cirrhosis mortality** trends **increasing**.